



Since 1948

Exploring the wonderful world of beekeeping together

The Bee Buzzer

Monthly publication of the

Northeastern Kansas Beekeepers' Association

VOLUME 67, NUMBER 1

EDITOR: JOLI WINER

JANUARY 2015

General Meeting & Program**Monday January 12th****(2nd Monday this month)****7:00 p.m.****Youth Scholarship Students Present****&****Old Bee Guys-Questions & Answers
& Gadgets & Gizmos**

Please note that our meeting will be held on the 2nd Monday of the month—the 3rd Monday is Martin Luther King Day and the county offices are closed.

This is one of our favorite meetings. Our youth scholarship students give their presentations at this meeting—though some may present next month. We invest a lot in our scholarship program and this is how we get to see what it has produced. The kids are always fantastic and they are so creative in how they choose to present.

So from the young to the old! Bring your questions and any gadgets that you have either made or purchased to share with the group. Some of our old bee guys will gladly answer them for you.

This will be a great program, something for everyone. If there is time Joli may talk about some of her favorite books that she has written about over the years. There is still a lot left of winter and you may enjoy reading some of them.

Members may bring refreshments to share.

Directions: The address is 2110 Harper St. It is easily accessible from K10, turn north on Harper Street and it is just a few blocks. We are in Building 21 North which will be on your left you turn into the fairgrounds.

We are looking for someone to help us with our sound system at the meetings. If you can help us please approach Joli or Becky at the meeting.

December Auction Total \$1108

Many thanks to Cecil and Steve for their great auctioneering skills (hahaha) maybe we could recruit an auctioneer to be a beekeeper for next year. Let's make that one of our goals. Seriously they did good enough to raise \$1108!! Thanks to those of you who were so generous. That money goes towards our youth scholarship fund. Thanks also to the students for acting as runners and helping the auction along! You did a great job.

Upcoming Events

Friday and Saturday March 13 & 14 2015 Kansas Honey Producers Meeting, Manhattan KS

Our guest speaker will be Dr. Clarence Collison, Beekeeping Specialist, Emeritus Professor/Dept. Head, Dept. of Entomology and Plant Pathology, Mississippi State University. He also writes a monthly column, *A Closer Look*, in the *Bee Culture Magazine*. Author of *What do you know?* Holiday Inn at the Campus, 1641 Anderson Avenue, Manhattan KS 66502 Registration forms at kansashoneyproducers.org.

Sunday, March 15th & Sunday March 22nd 2015

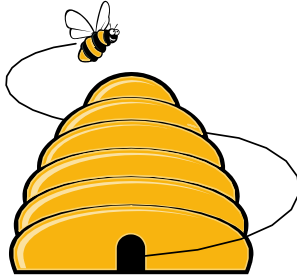
The New Beekeeper Class will be held at the Douglas County Fairgrounds Bldg 21. Guest speaker on the March 15th will be Dr. Clarence Collison. Price will include a textbook and presentation notes. Information at nekba.org.

Saturday June 6th 2015 Nekba Funday, Dr. Marla Spivak, & Dr. Marion Ellis & hopefully Dr. Chip Taylor guest speakers. Douglas County Fairground Save this date—it'll be the meeting of the century Marla, Marion & Chip—Don't miss it.

Mother Earth News Fair October 24th-25th, 2015 Topeka, Kan. | Kansas Expocentre | Oct. 24-25, 2015, Topeka, KS 66612

Beelines

By President Andy Nowachek



It's over and a new year awaits us in our new adventures in life and as a beekeeper. I hope everyone's holidays were joyful and safe. It seems no matter who I speak with, young or old, this past year has sped by probably quicker than we would have liked it to.

As I have mentioned before that while working bees I try and plan for a year from that date. My reasoning for this is that a year from now I will be doing this particular part of beekeeping and I may want to change it next year. The problem with this is it is a year away and I do not always remember what I had planned on doing. This is why when New Year's roll around it is a good time to try and recapture those things we were going to do.

Each year I plan on doing something that I have either read about or something I think will work and have not put it into action yet. As a new beekeeper I believe that the first couple of years should be basic beekeeping and seeing if you can bring your hive through a couple of years strong and healthy. I have no idea how many times I have read that someone brought their hive through the first winter and that is great. Mother Nature can play a big part in that with the changes in weather. A mild winter and we all love it. A cold and long winter and the playing table now changes. I kind of followed this philosophy when starting into beekeeping and I will admit that I was fortunate to have a lot of help from experienced beekeepers. But reading books and listening to other beekeepers it always sounded pretty neat to try out something new and see if I could accomplish it. I probably enjoy the challenge of trapping bees out of trees and building as one item that has always been fun. Some things may seem foolish but, fun as trapping

bees out of a tree fifteen foot in the air (Would not recommend but was successful) that was near a public swimming pool. The count is now at five logs at my land that were cut down from numerous individuals or tree trimming businesses and either I trapped out the bees or set a hive on top of them and drew the bees into the hive. Double queening a hive to see what difference there was between a single queened hive and two. It was fun and it was a good year but too high and too HEAVY to lift supers over your head and a pain to back the truck up to stack them. If you have a couple years' experience as a beekeeper and would like to compare hives, use two different type queens and compare their characteristics. Even hive to hive you can see a difference, try and determine why they are not equal in quantity of bees and honey production.

Another thing I start out good at and taper off is record keeping. I have a good friend who can tell you the exact day and time, this is dedication but from his records he can determine what needs to be done at a certain time and what to avoid. We have been using a monthly planner to keep track of our trips to the bee yards and what condition they are in and any other comments we need to remember. Soon as it warms up enough I will be going from hive to hive with a bottle of RUBBING alcohol and wiping off my notes from the telescoping tops. This has become an easy way to walk up to a hive and see your notes on whether a new queen was introduced, new brood, and queen released etc.

I think procrastination has become my middle name on certain parts of beekeeping. I have said it before and will say it again I would rather build 100 new frames than clean 10 frames, but this job awaits culling out old supers so maybe I better get with it.

I hope everyone a prosperous year and I know the officers and board members are working hard to have another OUTSTANDING year with our monthly programs and a FANTASTIC FUNDAY with educational information for everyone

Hope to see you all at the next monthly meeting.

**NORTHEASTERN KANSAS BEEKEEPERS' ASSOC.
2015 MEMBERSHIP APPLICATION**

New this year --go online at nekba.org to pay your renewal!

Check one: **Renewal** **New Membership**

NAME _____

ADDRESS _____

CITY _____ STATE _____ ZIP+4 _____

PHONE _____

Email address _____

(write clearly please)

County _____

Yes—please send my Newsletter (The Buzzer) by email.

I understand that it will arrive earlier and will be in color!

Membership for 2015 Northeastern Kansas Beekeepers \$15.00 _____

Additional family members wanting voting rights \$1.00 per person \$1.00 _____

Additional Family member's names _____

(Only one newsletter will be sent)

Youth Membership (18 years of age or under) 7.50 _____

Membership for Kansas Honey Producers' Assn. \$15.00 _____

American Bee Journal 1 year \$21.00 _____

() Renewal () New 2 years \$39.75 _____

Bee Culture Magazine 1 year \$25.00 _____

() Renewal () New

Youth Scholarship Donation \$ _____

Total \$ _____

Make checks payable to: NEKBA or Northeastern Kansas Beekeepers' Assn.

Mail To: Robert Burns, 7601 W 54th Terr., Shawnee Mission, KS 66202-1129

913-831-6096 Email: rburns@kc.rr.com

New this year go online-- at nekba.org to pay your renewal!

**Classes offered Saturday,
January 24th**

**Learn to Make Natural Soap & Skin Care
Products 9:00-12:00
Beeswax Class 1:00-4:00**



Make-it/Take-it soap class. Becky & Steve Tipton & Joli Winer will provide many recipes for natural, skin care items you can whip up in your own kitchen--easy and fun! \$30.00 9:00-12



Beeswax & Candlemaking Make-it/Take-it Class Joli Winer and Cecil Sweeney & Steve Tipton will cover from cleaning wax to making candles. Participants will take home a hand dipped candle and an ornament. Uses for beeswax will also be covered. \$30. 1:00-4:00

**Building 1, Douglas County Fairgrounds,
2110 Harper St. Lawrence Ks**

**Questions? Call or email Becky at
785-484-3710 H or 785-554-1591 Cell
bstbees@embarqmail.com**

Registration form:

Name _____
Address _____
City, st, zip _____
Phone _____
Email _____

Natural Soap & skin care

of people _____ **@\$30.** _____

Beeswax Make & Take

of people _____ **@\$30** _____

I'd like to take both-soap & beeswax

of people _____ **@\$50** _____

Total \$ _____

**Mail checks to Becky made out to
"nekba"—they will not be cashed until
after the class.**

Minimum 10, Maximum 30

Tips for January

- Begin your recordkeeping for 2015; calendars are already 1/2 price so get one that you can write on. Vow to keep track of when different plants bloom in your area, if you fed, how your bees did, if you replaced any equipment etc.
- Check a beekeeping book out of the library—bring back any books that you have checked out
- Build or repair any equipment
- Renew your membership, send in your dues—you can do it online now by going to nekba.org
- Order your queens and package bees as soon as possible
- Check the lids on your hives; make sure they have a heavy rock or a cement block on top. We have had some fierce winds this winter.
- Plan next year's garden to include some nectar producing plants.
- As we go into the New Year think of all the friends you have made at the beekeepers meetings.
- Plan to attend at least one day of the Kansas Honey Producers meeting in Manhattan KS on March 13th or 14th—excellent program for both beginners and more experienced beekeepers—details at nekba.org
- Bring at least one new beekeeper or prospective beekeeper to a meeting and get them to come to our new beekeeper class—Dr. Clarence Collison will be our guest speaker at the first class on March 15th.

Birds in the Beeyard

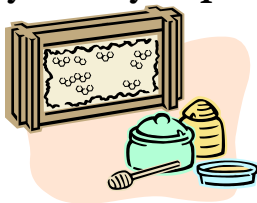


This has been a great holiday season for our birds. The Milroy's gave us a wreath for the birds (one was sold at the auction too). At that wreath we have had a Carolina wren and a downy woodpecker and a red-bellied woodpecker! It's been several years since we have seen a wren around our place!

At our regular feeders we have had some great birds too. Chickadees, Harris sparrows, white crowned sparrows, titmice, goldfinch, house finches and more what a treat it has been!

The Honey Pot

By Becky Tipton



We grow quite a bit of our own food. During the summer it is a particular pleasure to prepare meals that originate with our chickens, garden, and, of course, our bee hives. My son gave me a Christmas gift that I am very excited about—he ordered a whole bag full of interesting vegetable seeds for me. Nearly all are heirloom and none are of a variety I've grown before—white cucumbers, yellow beets, lettuce that will withstand extreme temperatures, beautifully colored beans. I am pumped!

Continuing the celebration, Steve built a coldframe for our garden so we can push spring a few weeks closer. Steve and I are both pretty adventurous eaters—I think we have some really good eats in our future!

The executive board met during the very last days of 2014 to begin planning programs and speakers for 2015. When I think of the countless hours donated on behalf of the honey bee and the NEKBA beekeepers, it astounds me. Thank you to my fellow board members. It is a pleasure to work with each and every one of you!

The Merc—grocery coop in Lawrence, features organic veggies, locally grown meat, dairy, poultry, and some delightful baked goods. These little cookie gems are sweetened with nothing but our good honey and are guiltless treat.

Honey Bumblebee Cookies

(Original recipe from The Merc, Lawrence)

- $\frac{3}{4}$ cup natural peanut butter (you could use almond butter)
- 1 cup honey
- 1 cup dried unsweetened coconut (shredded)
- 1 cup sliced almonds
- 1 cup sesame seeds
- 1 cup sunflower seeds

Directions:

Preheat oven to 350°. Lightly toast the seeds, nuts, and coconut. For best results, toast each item

separately on a cookie sheet. Check regularly and move around with a spatula. Toasting time is approximately 5-7 minutes. (I used already toasted sesame seeds from the Asian food section of the grocery store.)

Place the honey and peanut butter in a large mixing bowl. Add the nuts, seeds and coconut to the honey and peanut butter and mix thoroughly.

While the dough is still warm, portion out with a small scoop or tablespoon. Dip the scoop in water periodically to help smooth the bees.

These can be frozen for future use, or baked off right away. To bake, set the oven to 325°. Line cookie sheets with baking parchment. Bake for 10-12 minutes or until lightly golden. Watch closely—the honey will cause these cookies to brown quickly.

Homemade crackers have more texture and flavor and none of the hydrogenated mystery chemicals that leave us all wondering just what we are eating. These aren't exactly the graham crackers we're used to, but they are very tasty with a cup of cocoa. This recipe is from a new book I picked up at MEN fair in October: *Honey Crafting* by Leeann Coleman and Jayne Barnes. It contains both projects and recipes—good read!

Easy Homemade Graham Crackers

$\frac{3}{4}$ cup unbleached, all-purpose flour

1 $\frac{1}{2}$ cups whole wheat graham flour

1 tsp. baking powder

$\frac{1}{2}$ tsp. baking soda

$\frac{1}{2}$ tsp. salt

$\frac{1}{4}$ tsp. ground cinnamon

$\frac{1}{4}$ c. sugar

$\frac{1}{4}$ c. brown sugar

$\frac{1}{2}$ cup cold unsalted butter—cut into chunks

$\frac{1}{4}$ cup honey

$\frac{1}{4}$ cup cold water

1 tsp. vanilla or maple flavoring

1 TBSP turbinado sugar (raw sugar)

Directions:

- In a food processor, combine dry ingredients and sugar (except turbinado) Pulse until blended.
- Add butter and pulse until coarse crumbs form. Add honey, water, and extract and pulse until dough forms a ball.
- Roll $\frac{1}{2}$ " thick between 2 sheets of waxed paper. Refrigerate one hour.

- Preheat oven to 350° F.
- Line a baking sheet with parchment. Roll chilled dough to 1/8" thick. Cut crackers into squares or other desired shapes. Prick holes in each cracker with a fork; sprinkle turbinado sugar over the crackers.
- Bake 15 minutes or until lightly browned. Cool completely. Makes about 48 crackers.

Looking for a recipe using honey, e-mail me at bstbees@embarqmail.com and I'll search my cookbooks and try to find what you're hungry for!

Honey Plants



Rose Lee

Perhaps you like me like to pluck dried blossoms and seed pods from plants like clover and borage that are frequented by honey bees. Now is the time to start plants from those seeds.

Jo Patrick, NEKBA talented and energetic secretary, shares a trick she learned at the Johnson County Extension office on starting perennials in winter: "Using potting soil and pots, I sow perennial seeds at the recommended depth. I mist the tops of the pots well and place the pots in a transparent trash bag and tie shut. This I set out in the sun and wait. At the first sign of sprouting, I remove the bag and water. No need to open the bag to water prior to germination. If it snows or rains on the bag, it's OK. The seeds will begin sprouting in March. Upon seeing sprouts, remove the bag and water when needed. I also use this method for annuals except that I start the seeds in March after danger of frost has passed."

Now if I can just remember where I put those seeds I collected last summer and fall, I'm going to try Jo's method. Hope you, too, will give it a try.

Meeting Dates for 2015—mark your calendars now!

Meetings are held at the Douglas County Fairgrounds at 2110 Harper St. It is easily accessible from K10, turn north on Harper Street and it is just a few blocks. We are in Building 21 North which will be on your left you turn into the fairgrounds. Programs subject to change.

- Monday, February 16 7:00 pm *Making Nucs & Requeening*
- Sunday, March 15--New Beekeeper Class 1
*Special Guest--Clarence Collison
- Sunday, March 22--New Beekeeper Class 2
- Monday, April 20 7:00 pm *How to inspect a Beehive*
- Monday, May 18 7:00 pm *Supering and Producing Comb Honey*
- June 6--FUNDAY!
Full day workshop
Keynote speakers--Dr. Marla Spivak & Dr. Marion Ellis
- July? Bee-Bee Q Meeting held at alternate location, date to be determined-Bee Olympics
- Monday, August 17, 7:00 pm *Honey Judging, Integrated Pest Management*
- Monday, Sept 21 7:00 pm *Getting Bees Ready for Winter*
- Monday, October 19 7:00 pm *Evaluating Your Hives and Making Plans for 2016*
- Monday, November 16 7:00 pm TBA
- Monday, December 21 7:00 pm *Holiday Cookies and Youth Scholarship Auction*
- January 11, 2016 (2nd Monday) Youth Scholarship presentations

Renew your membership & Sign up for the new bee class—you may learn more the 2nd year!

Apologies to those getting this via email—I can't for the life of me figure out how to fix the page numbers when I add a saved document—I might bring my computer and see if someone can help me.

Old Bee Gal

By Joli Winer



How a Beekeeping Meeting can change a life!

This time of year our thoughts turn to both the future and the past. Many of you haven't been around to know our personal history so I'll share that and then get on with the point of the article.

In the early 70's I wanted to quit college so I got a job with a beekeeping family in northern California. This job, that I accepted because I was afraid to tell my mom and dad that I was quitting school, was life changing. I was a city girl, raised in Kansas City Missouri and a product of the now troubled Kansas City school district. The closest I'd been to nature was one summer I went for 1 week to Girl Scout day camp. While in college I was part of a program called Round River, named after an Aldo Leopold essay, it was a 1 year outdoor education experience. We hiked and camped – I was introduced to bird watching and wild flowers.

So anyway while in California my job as with Howard Foster Apiaries. Howard had been elected as president of the American Beekeeping Federation. This was a very time consuming job so he hired me to run his queen rearing operation. As I look back, he must have been a fool, I knew nothing about bees! He welcomed me into his family and for 3 years I lived and breathed bees. I learned to dip beeswax queen cells, then I learned to graft larvae into them and then to follow the process to raise queens from larvae to laying queens. I caught queens to put into cages for sale, bottled and delivered honey.

After that I moved back here and resumed school at KU. I did my student internship with Johnson County Park and Rec. and during that time I taught a beginning beekeeping class. Taking that class were two men who owned a company called Mid-Con. They had the rights to produce and sell a product for honey bees called Fumidil-B. It treated a little known bee disease called nosema. Several years later they hired me to run the bee product part of their business. During that time, 1987, I went to a beekeeping meeting in Virginia and met Cecil. We saw each other 5 times and got married. A year later we purchased Mid-Con and started going to all of the national and regional beekeeping meetings. Almost 8 years ago we closed that business —now to the point

of this long winding story.

We have been so fortunate to be able to attend so many meetings of beekeepers. We have met incredible people in the industry that have become personal friends. Since 1995 I have been program chair for the Kansas Honey Producers Association. I have helped, since its inception with the Funday. When we think of all of the people who have stayed in our guest bedroom because they were presenting at a meeting...well it is a lot! Now that room is my soap curing room and it is hard for anyone to sleep in it!

The point is the importance of attending meetings. Not just ours—though we are fortunate to have great ones. We also have great classes but don't think of those as the be all end all to your learning. Beekeeping has evolved over the years. It continues to evolve and change to be successful you need to keep learning. We began beekeeping many years before varroa!! Most of you can't imagine beekeeping without varroa.

We have way over 500 families in our beekeeping group. Yet at our state beekeeper meeting in Wichita in October we only had about 10 members of our group in attendance. It was an excellent meeting with a great program and I was really sad that it was shared with so few of you.

While you are a beekeeper your knowledge about bees never ends. Beekeeping changes all the time—many of you joined the beekeeping family because of all of the publicity surrounding one of the biggest changes of all, namely CCD.

I just want to encourage all of you to enhance your beekeeping knowledge every chance that you get. Learn from others that are either from larger operations than yours or researchers from other parts of the country. Other beekeepers that have started with one hive and now have hundreds who make money with value added products.

Yes Cecil and I, Steve and Becky, Kristi, Larry Coppinger—we know a lot – and so did those who went before us—Wendell Ohmes, Bill Holden and Robert Dye—but we don't know everything and what we do know we learned from others that we heard at national, regional or state meetings or even our own Funday.

I hope to see you at a meeting soon. Maybe it'll be life changing for you too.



The Metamorphosis-

A Column for the Youth Scholarship Students

Articles by Youth Scholarship Students

I came home to a not so good surprise on June 30th, 2014. I figured out that my bees had swarmed. I called Cody Clark and he came over with an extra hive to help me catch my swarm. My hive that I started with ended up making their own queen. So at the end of the year I had two hives!



Brantly Montgomery

Hi my name is Cate Milroy. I am eleven years old and live in Spring Hill KS. I want to thank the Northeast beekeepers association for giving me a beekeeping scholarship this year. I also want to thank my mentors Cecil and Joli. They are very sweet and I could not have done it without them. Some of my favorite parts of the year were Bee fun day, county and state fair, working the booth's at each fair, and most of all getting lots of honey! Even though I got stung for the first time at bee fun day the swarm demonstration was very cool. I got to see the bees go in to a swarm on a pole when the guy put the queen on the pole. I also got to see them go on a man. It looked like he had a beard and now I know how to look for and find a swarm. At county fair I was very excited to see how well I did and to work the honey booth. It turns out that I did pretty well on my honey I got youth grand champion for my honey reserve champion for my honey basket and a red on my frame. I was pretty successful at state fair too. It turns out that I did awesome, I got youth best of show out of the youth group I got a purple on my frame a blue

on my basket and a blue on my honey. It was very fun working the county and state fair booths. At the county fair I sat by the wood hive demonstration and answered questions that people had for me and I also told the parts of the hive. At the state fair it was really fun I got my own name tag and vest. I worked the honey sticks and it was fun to sell them to people and I sold a lot. We went to the Kansas Honey Producers meeting and my sister and I told all about our year in beekeeping. I can't wait to tell the Northeast beekeepers all about it in January.

Cate Milroy

My name is Megan Milroy and I am from Spring Hill, KS. I was a Kansas Honey Producers Scholarship participant this year. We knew nothing about beekeeping or honey production before January of this last year. It has been a great and very educational experience. My favorite part of the whole year was actually getting to extract the honey. At first I thought we would just scrap the honey off the frames, but now I realize what the extractor does. It is good to know that the bees will be able to use that comb next year and spend more time making honey. My hive actually swarmed this year so it didn't get as much honey as my sister's did. I was glad however, that the hive hatched a new queen and that she is still doing great. I did extract 9 pounds of honey that I was able to use for County and State Fair. Swarming wasn't my only problem for the first year though. My hive did also get mites, but Cecil showed us how to treat for those this fall. I am hoping in the Spring everything looks good. My sister did a second extraction in September before we treated for mites. It was really cool how the honey she got in the fall was different than what we extracted in July. The September honey was darker, thinner and slightly sweeter. We did blind taste tests with our family. I was the only one that liked the July honey better. We really enjoyed the honey project this year. So much that we are starting a Beekeeping 4H group in Johnson County. We want to help other kids learn about the importance of beekeeping. I want to thank our mentors Cecil and Joli not only for this past year, but for agreeing to help us this coming year with our Beekeeping 4H group.

Megan Milroy

2015 Beginning Beekeeping Class

This class is designed for both beginning and 2nd year beekeepers. We like to say that you'll learn more the 2nd time you have taken this class AND had your bees during the 1st year. Enroll again for the 2nd round. It'll make more sense! Get ready for the honey harvest. The class fee registration includes a textbook and presentation notes.

You may register (pay) for the March Class via online or by sending in your registration form.

Sundays, March 15 & 22nd, 2015

Registration @ 12PM to pick up your book and name tag(s)

Class begins at 1:00PM and we'll wind down about 5:00PM

Special keynote instructor for March 15 - Dr. Clarence Collison

Beekeeping Specialist, Emeritus Professor/Dept. Head, Dept. of Entomology And plant Pathology, Mississippi State University. Dr. Collison is the author of *What do you Know?* He also writes a monthly column for *Bee Culture Magazine*. The first workshop is being taught with special presentation on bee biology with over-view of hobby beekeeping, and the how to's of starting your own hive. We are so fortunate for have him share his knowledge with us.

LOCATION

Douglas County Fairgrounds Bldg. 21 North

2110 Harper St, Lawrence, KS -

K-10 to Harper Street, go north 2 blocks to the Fairgrounds.

(Registration form page 10)

More From Clarence Collison's *What Do you Know?*

1. Package bees are sold in two, three, four or five pound sizes. A pound of bees is approximately:
A. 10,000 bees B. 15,00 bees C. 3,500 bees D. 5,500 bees E. 2,500 bees
2. Drone honey bees normally become sexually mature at the age of :
A. 6 day B. 12 days C. 3 days D. 15 days E. 9 days
3. If a virgin queen is prevented from going on her mating flight, she will lose the urge to mate in approximately; A. 3 weeks, B. 5 weeks C. 2 weeks D. 4 weeks E. 1 week
4. Average lifespan of a drone in the summer is;
A. 10 weeks B. 6 weeks C. 2 weeks D. 4 weeks E. 8 weeks
5. Queens are capable of laying 2500 eggs per day (True or False)
6. During the summer worker bees live approximately;
A. 3 weeks B. 6 weeks C. 20 weeks D. 26 weeks E. 12 weeks
7. In an emergency, the shortest time possible that a colony could successfully replace a queen would be;
A. 8 days B. 14 days C. 16 days D. 10 days E. 12 days
8. Worker Bees normally produce wax and build combs when they are ____ days old?
A. 12-18 B. 6-12 C. 18-24 D. 24-30 E. 1-6
9. Queens develop from fertilized eggs or from young worker larvae less than ____ days old?
A. 3.5 days B. 5.0 days C. 3.0 days D. 4.0 days E. 4.5 days
10. The last in hive duty that may be assumed by a young worker before foraging in the field is:
A. Comb builder B. Receiver of nectar C. Cleaning Cells D. Nurse Bees E. Guard Bee

Answers: 1. C 3,500 2. B 12 days 3. A 3 weeks 4. E 8 weeks 5. False estimates 1500-2000
6. B 6 weeks 7. D 10 days 8. A 12-18 9 C 3.0 10 E Guard bees

***Northeastern Kansas Beekeeper's Association
Beginning Beekeeping Class 2015 Registration Form***

Sundays, March 15th & 22nd 1-5:30 p.m.,

Dr. Clarence Collison Beekeeping Specialist, Emeritus Professor/Dept. Head, Dept. of Entomology and Plant Pathology, Mississippi State University, Author of *What do you Know?*

He will present on the first day, March 15th.

Douglas Co. Fairgrounds, 2110 Harper St., Bldg. 21, Lawrence KS

K-10 to Harper Street, go north 2 blocks to the Fairgrounds.

New: Pay online at NEKBA.org

NAME _____

ADDRESS _____

CITY _____ STATE _____ ZIP+4 _____

PHONE _____

Email address _____

Yes I would like to receive my newsletter by email **I would like to receive it by mail**

**The registration fee is per person; however, additional people in the family may attend for only an additional \$25.00. Each family will receive 1 text book and 1 ticket to be eligible for door prizes. Only new members will be eligible to win the hive and package of bees.*

Workshop Registration Fees:

For non-members of The Northeastern KS Beekeepers Assn: \$60.00 _____

(Fee includes a one-year membership & a text book)

For current members of The Northeastern KS Beekeepers Assn: \$45.00 _____

(Fee includes text book) You must have paid your \$15.00 2015 dues for this rate

Additional Family members who will be attending @\$25.00 each (includes presentation notes)

\$25.00 ea _____

List names: _____

American Bee Journal 1 year \$21.00 _____

() Renewal () New 2 years \$39.75 _____

Bee Culture Magazine 1 year \$25.00 _____

() Renewal () New 2 year \$48.00 _____

Youth Scholarship Fund Donation _____

Registrations Postmarked by February 16th, 2015 are entitled to take an Early Discount of - \$10.00

Total \$ _____

Make checks payable to: The Northeastern KS Beekeepers Assn. or NEKBA or go to nekba.org and pay and register online

Mail to: Robert Burns, 7601 W. 54th Terr., Shawnee Mission KS 66202 email rburns@kc.rr.com

For Further Information go to NEKBA.org or call Becky at 785-484-3710 or email bstbees@embarqmail.com

HEARTLAND HONEY & BEEKEEPING SUPPLIES

We carry a complete line of beekeeping supplies including woodenware, smokers, extractors, books, queens, package bees and containers. We will trade wax for supplies. For your convenience please call in advance –Hours Mon., Tues., Thurs. & Friday 10:30-5:30, closed Wednesday. Joli Winer/Cecil Sweeney, Heartland Honey and Beekeeping Supplies, 19201 S Clare Rd. Spring Hill KS 66083. (913) 856-8356. joli@heartlandhoney.com

FISHER'S BEE SUPPLIES

We carry a complete line of beekeeping supplies. See us for your woodenware, smokers, containers, foundation, beekeeping books, extractors, queens and package bees. We also have extractors for rent. We will trade wax for supplies. Our hours are: 9:00am - 5:00pm Monday - Friday and Saturday after 8:30am. You should call before you come to make sure we are here. ED FISHER 4005 N.E. 132nd Street, Smithville MO 64089 816-532-4698

DRAPER'S SUPER BEE

We offer fast and courteous service to all beekeepers. We sell all the supplies for beekeeping, containers, pollen and honey for those who run short. Order is shipped the same day as received in most cases. Free catalog available on request. Pick up orders at our warehouse must be pre-ordered and picked up by appointment only. Business Hours: Mon.-Thur. 8-5; closed from 12-1.

Brenda and Larry Draper, DRAPER'S SUPER BEE; 914 S St. Auburn NE 68305 PHONE: (402) 274-3725.

THE HAWLEY HONEY COMPANY

For Sale: White Clover honey strained in 5 gallon buckets. We will pack it in your jars for an extra fee. Bee equipment, new and used. Jars, foundation, bears, comb honey, used extractors. Bees: frames of brood. Corn syrup or sugar by the 5 gallon bucket or barrel. *If you need it, we probably have what you want.*

Raymond Cooper, 220 N Elm, Iola KS 66749. Call: 620-365-5956 after 8:00 p.m.

JORDY'S HONEY

We carry a full line of beekeeping supplies. Bee Hives, Supers, Frames, Foundation, Honey Containers, Smokers, Beekeeping Books, Queens, Packaged Bees and much more. Our hours are 8:00 am to 6:00 pm Monday-Friday and weekends by appointment. Please call in advance so we can have your supplies ready when you arrive. R

Robert Hughes, 12333 Wedd Street, Overland Park, KS 66213 PHONE: 913-681-5777

NORTHEASTERN KS BEEKEEPERS' ASSOC. 2015 MEMBERSHIP APPLICATION

NAME _____

ADDRESS _____

CITY _____ STATE _____ ZIP+4 _____

PHONE _____ Email address _____

I would like to receive the newsletter, *The Buzzer*, by email Yes _____ No _____

Membership Northeastern KS Beekeepers per year (July.-Dec. \$7.50) \$15.00 _____

\$15.00 (Jan-Dec)

Additional family members wanting voting rights \$1.00 per person \$1.00 _____

Additional Family member's names _____

(Youth Membership (18 years of age or under) \$7.50 _____

Membership for Kansas Honey Producers Assn. \$15.00 _____

American Bee Journal 1 year \$21.00 _____

Bee Culture Magazine (formerly "Gleanings") 1 year \$25.00 _____

Youth Scholarship Donation _____

Total _____

Make checks payable to: **NEKBA or Northeastern Kansas Beekeepers Assn.**

Mail To: Robert Burns, 7601 W 54th Terr., Shawnee Mission KS 66202 913-831-6096 email rburns@kc.rr.com

Now you can pay online at nekba.org

The Northeastern Kansas Beekeepers' Association

Membership is open to anyone who is interested in bees or bee culture. Dues are \$15.00 per calendar year (December 31-December 31) for the first in the family joining. Those joining in July or later in the year may pay \$7.50 for ½ year. Additional members of that family wanting voting privileges shall be assessed dues at \$1.00 per year. Youth memberships (18 years of age and younger) are \$7.50 per year. New memberships and renewals should be submitted to the treasurer.

The *Bee Buzzzer* is the official publication of the Northeastern Kansas Beekeepers' Association, Inc. and is published monthly. Commercial ads are accepted in the newsletter for a fee, non-commercial ads by paid up members are accepted and are free.

The library of the association is free to all members. Books may be checked out at the meetings and kept for a period of 30 days. The bee publications, *The American Bee Journal* and *Bee Culture* can be subscribed for through the treasurer.

The Association meets each month on the third Monday at 7:00 p.m. except during the months of January, March, June and July. A beekeeping class is held in March. This is a nonprofit organization; elected officers serve without pay. Everyone is invited to attend the meeting. Check *The Buzzzer* or our website at nekba.org each month for the actual date, time and location. If the weather is bad call an officer to find out if the meeting will be held.

2015 Officers

President: Andy Nowachek, 10921 W 91 st Terr, Shawnee Mission KS awn@everestkc.net	913-438-5397
1st VP: (youth scholarship) Christy Milroy, 23840 W 207, Spring Hill KS 66083 Christy.D.Milroy@sprint.com	913-707-2003
2nd VP (Librarian): Alex Pantos, 2920 Stubbs Rd., Tecumseh KS 66542 MarlenePantos@yahoo.com	785-633-6283
3rd VP (Honey Plants): Rose Lee, 1126 S 4 th St, Atchison, KS 66002 rlee5407@sbcglobal.net	913-367-6264
Secretary: Jo Patrick, 611 E Sheridan, Olathe KS 66061 brian-patrick@sbcglobal.net	913-829-2682
Treasurer: Robert Burns, 7601 W 54 th Terr., Shawnee Mission KS 66202 rburns@kc.rr.com	913-831-6096
Program Chairperson: Becky Tipton, 9491 X Rd., Meriden, KS 66512 bstbees@embarqmail.com	785-484-3710
Editor: Joli Winer, 19201 S. Clare Rd. Spring Hill KS 66083 joli@heartlandhoney.com	913-856-8356
Webmaster: Robert Burns, 7601 W 54 th Terr., Shawnee Mission KS 66202 rburns@kc.rr.com	913-831-6096

Visit our Website at NEKBA.org

Northeastern Kansas Beekeepers Association
Robert Burns, Treasurer
7601 W 54th Terr
Shawnee Mission KS 66202

Address Service Requested

Meeting Monday night
January 12th
(This is the 2nd Monday)