

8,800 sq.ft. For lease

12264 Universal Dr, Taylor, MI 48180



Listing ID: 30327925
 Status: Active
 Property Type: Industrial For Lease
 Industrial Type: Flex Space, Industrial-Business Park
 Contiguous Space: 8,800 SF
 Total Available: 8,800 SF
 Lease Rate: \$6.25 PSF (Annual)
 Base Monthly Rent: \$4,583
 Lease Type: Modified Gross
 Ceiling: 18 - 20 ft.
 Office SF: 1,325 SF
 Drive-In Bays: 2 Bays



Overview/Comments

8,800 sq.ft. of light industrial for lease. Centrally located in Metro-Telegraph Industrial Park. Gross lease available. 1,325 sq.ft. of office with mezzanine storage. Call REA Construction at 734-946-8730 for a tour.

More Information Online

<http://www.catylist.com/listing/30327925>

QR Code

Scan this image with your mobile device:



General Information

Tax ID/APN:	263960770	Building Name:	Universal Trade Center 3
Industrial Type:	Flex Space, Industrial-Business Park, Manufacturing, Light Industrial, Self Storage, Warehouse/Distribution	Gross Building Area:	36,300 SF
		Building/Unit Size (RSF):	8,800 SF
Zoning:	LIGHT INDUSTRIAL	Usable Size (USF):	8,800 SF
		Land Area:	2.37 Acres

Available Space

Suite/Unit Number:	12264-12262	Rent Escalators:	Fixed Lease
Space Available:	8,800 SF	Offices:	4
Minimum Divisible:	8,800 SF	Office SF:	1,325 SF
Maximum Contiguous:	8,800 SF	Parking Spaces:	16
Space Type:	Relet	Drive In Bays:	2
Date Available:	09/01/2018	Ceiling Height:	20
Lease Rate:	\$6.25 PSF (Annual)	Clear Height:	18
Lease Type:	Modified Gross		

Area & Location

Property Located Between: Telegraph and Beech Daly
 Highway Access: I94
 Airports: Detroit Metropolitan

Building Related

Tenancy:	Multiple Tenants	Parking Ratio:	2 (per 1000 SF)
Total Number of Buildings:	2	Parking Type:	Surface
Number of Stories:	1	Total Parking Spaces:	16
Office Space SF:	1,325 SF	Column Spacing:	40
Property Condition:	Good	Passenger Elevators:	0
Year Built:	1988	Freight Elevators:	0
Year Renovated:	2014	Sprinklers:	None
Roof Type:	Flat	Amps:	200
Construction/Siding:	Block	Volts:	208

X-Phase:	3	Lighting:	Other
Heat Type:	Natural Gas	Internet Access:	Cable
Heat Source:	Radiant		

Land Related

Water Service:	Municipal
Sewer Type:	Municipal

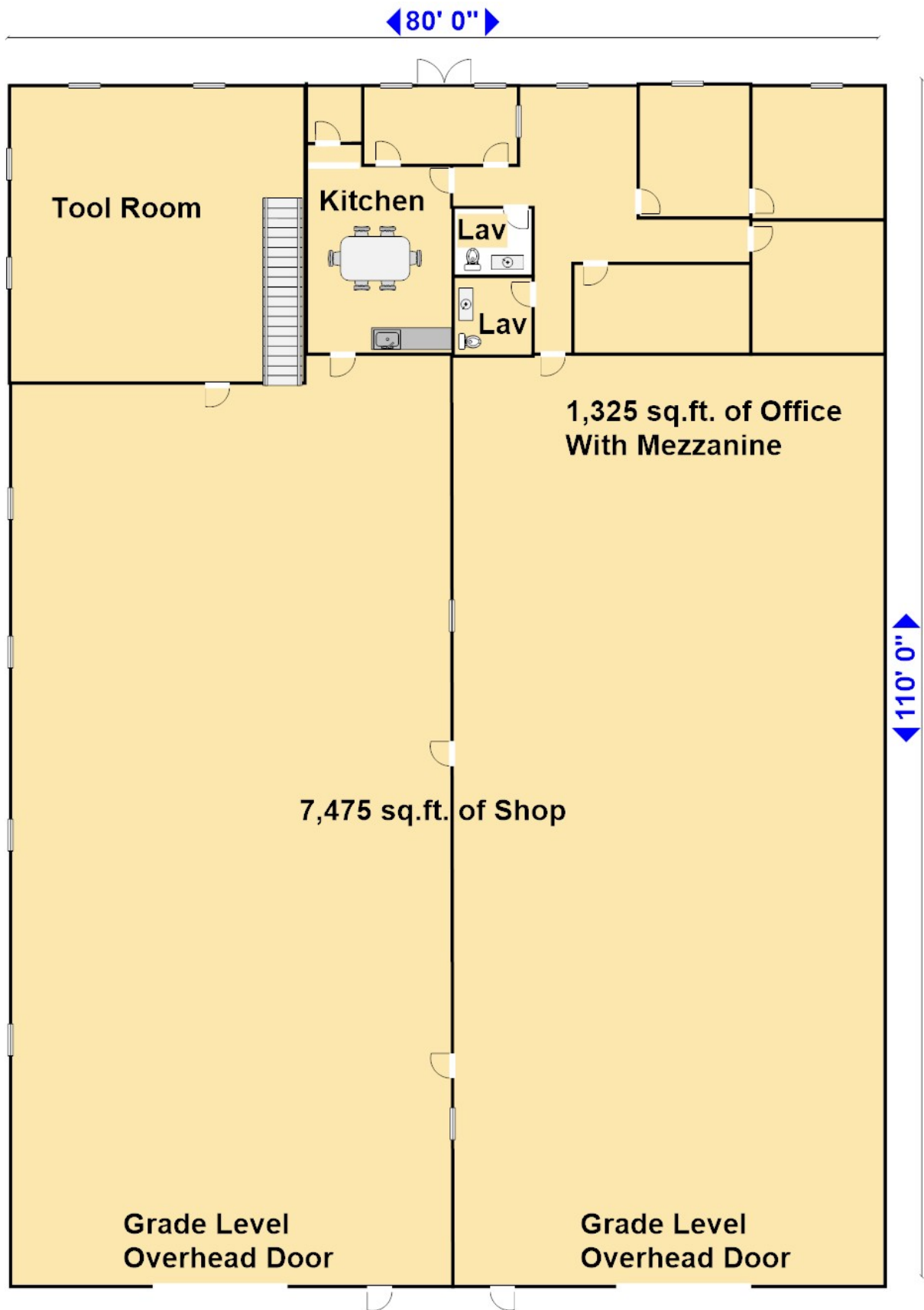
Location

Address:	12264 Universal Dr, Taylor, MI 48180	MSA:	Detroit-Warren-Dearborn
County:	Wayne	Submarket:	Airport District



Property Images







IMG_5974



IMG_5975



IMG_5976



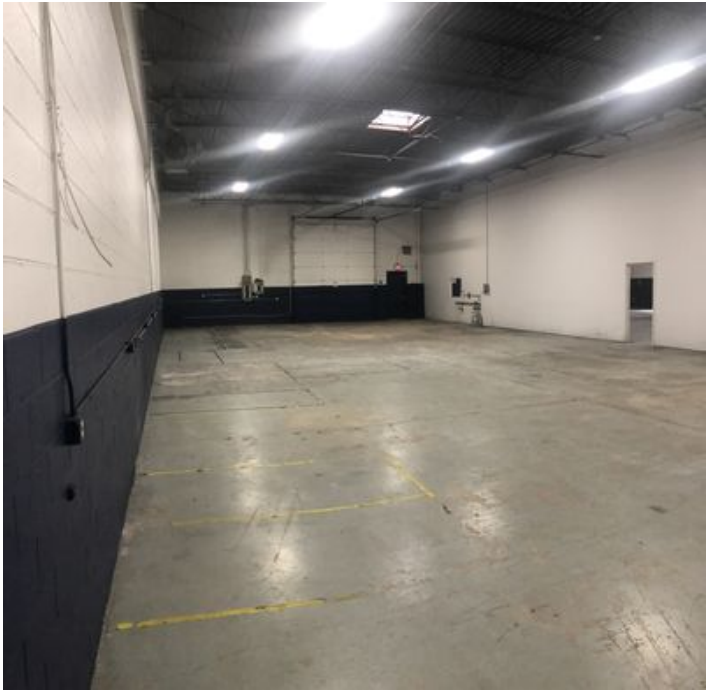
IMG_5977



IMG_5978



IMG_5980



IMG_5982



IMG_5981



IMG_5983



sign

Property Contacts



Yvon Rea

Rea Construction

734-946-8730 [0]

darren@reaconstruction.net