

The alternating opaque and sheer linear bands in our Dual Shades are both modern and masterful in guiding light and protecting privacy. Innovative and exquisite? We think so.

ALTA
WINDOW FASHIONS



DUAL SHADES

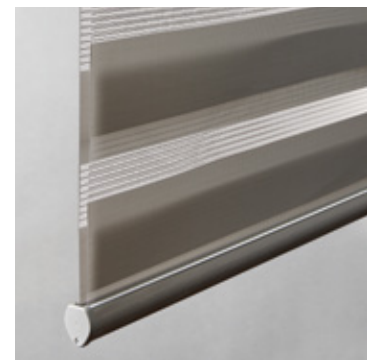
WHY OUR DUAL SHADES?

- When aligned, solid bands ensure privacy; when shifted, the sheer bands allow natural light and diffused views
- Translucent and room-darkening fabrics are blended with a sheer or mesh fabric with varying degrees of openness
- Over 70 fabric choices in a full range of textures and band sizes
- Rich color palette to accent or coordinate with today's room decors
- Shade completely disappears inside the headrail when raised for full outdoor view
- Limited Lifetime Warranty ensures customer satisfaction





FEATURES	BENEFITS
FABRIC STYLES	
Translucent	Fabric bands softly filter the light for an illuminating glow in the room.
Room Darkening	Achieve total privacy and more light control when room-darkening fabric bands align.
BAND SIZES	
Small	Perfect fit for narrow and smaller windows.
Medium	Well suited for most window sizes; excellent view-through.
Large	Boost the design drama; great option for larger windows and maximum view-through.
HEADRAIL AND BOTTOMRAIL	
Cassette	Comes standard with matching fabric insert for true texture and color coordination top to bottom. Note: On some fabrics, the insert will feature both the solid band and sheer fabric.
Cassette Colors	Colors include white, beige, black, dark brown, and anodized silver and are pre-selected to coordinate with the shade fabric.
Bottomrail	Innovative, fully enclosed bottomrail allows the fabric to slide through smoothly for effortless operation. Fabric-wrapped rail is standard; painted rail is optional.
CONTROL OPTIONS	
Continuous Cord Loop	Built for precision and simplicity. Cord loop remains the same length. Cord tensioner secures dangling cords.
Motorization	For hard-to-reach windows and enhanced child safety. Battery-powered motorized system operates the shades at the touch of a button.



Fabric glides through bottomrail