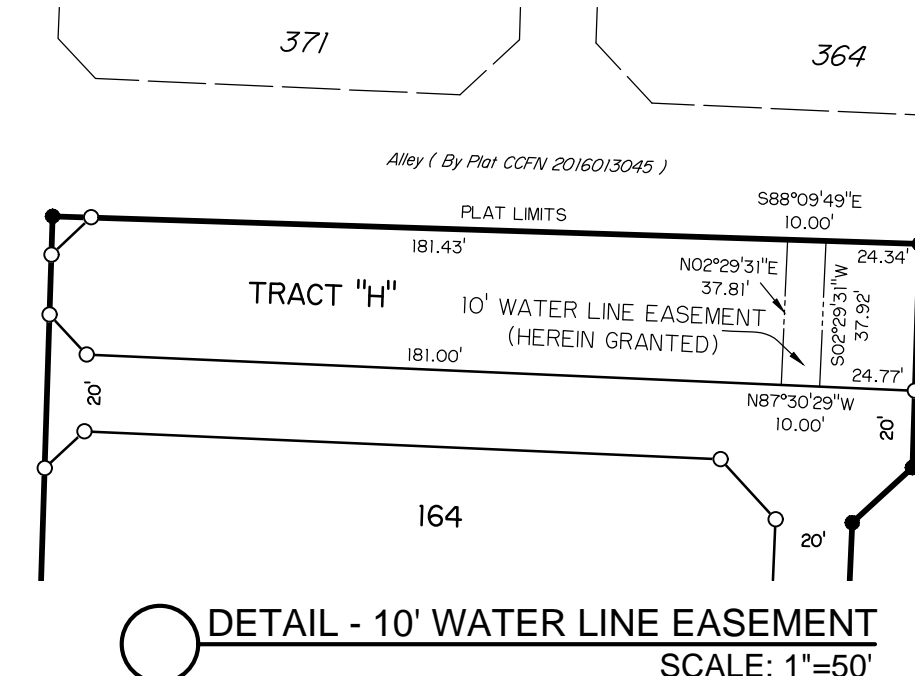
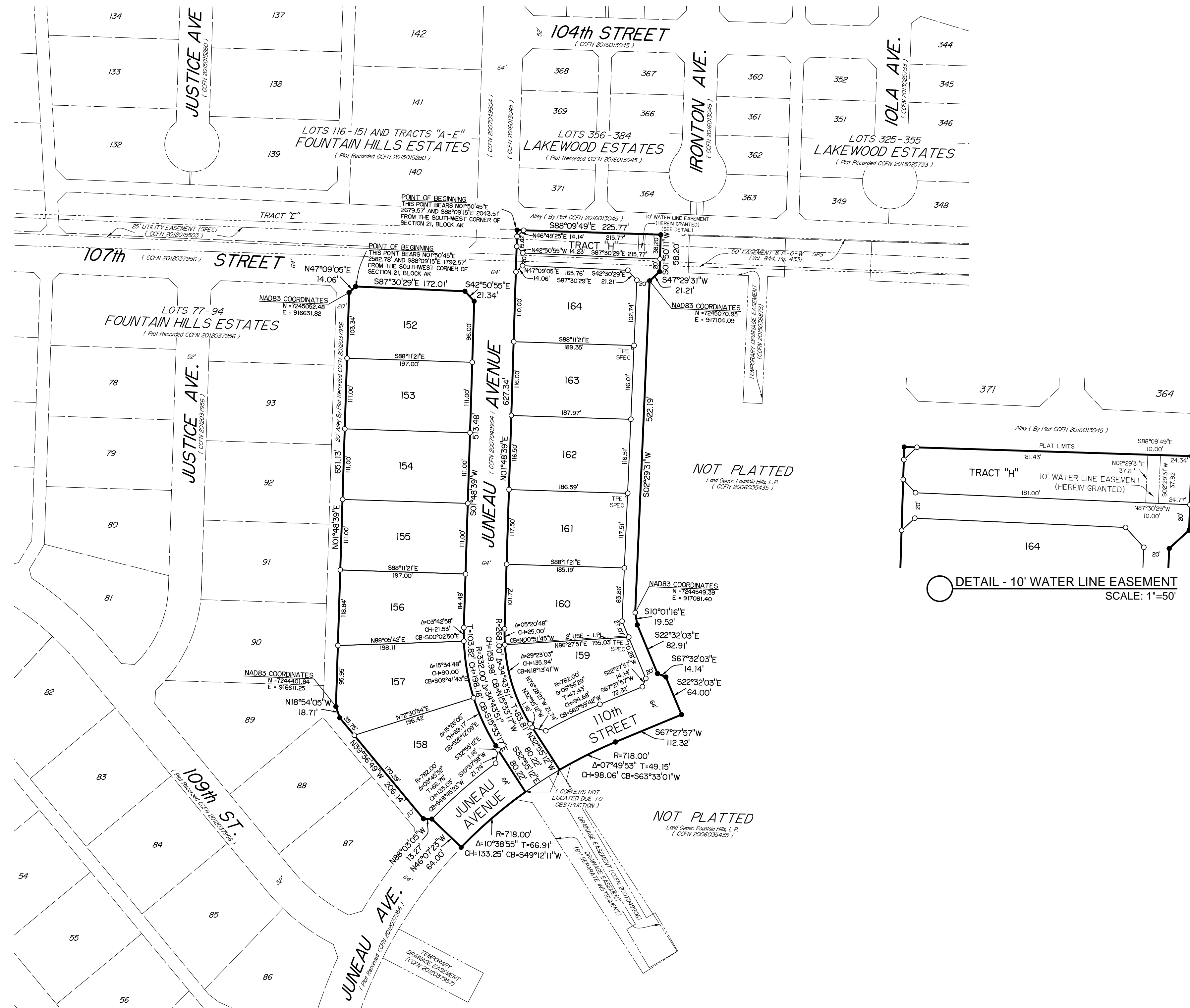


LOTS 152 - 164 & TRACT "H",  
**FOUNTAIN HILLS ESTATES**  
 AN ADDITION TO THE CITY OF LUBBOCK,  
 LUBBOCK COUNTY, TEXAS



**GENERAL NOTES:**  
 Scale : 1"=100'  
 Heavy lines indicate plat limits.  
 All streets, alleys, and easements within plat limits are herein dedicated unless noted otherwise.  
 All easements herein granted shall entitle the City or the utility company using such easements to the right to remove, repair, or replace any lines, pipes, conduits, or poles within such easements as may be determined by the City or utility company without the City or utility company being responsible or liable for the replacement of improvements, paving, or surfacing of the easement necessitated by such removal, repair, or replacement. Easements designated or intended for vehicular passage (utility and emergency) or pedestrian access shall not be fenced or otherwise obstructed.  
 All utility service shall be in accordance with the Underground Utilities Policy Statement by the Planning and Zoning Commission of the City of Lubbock, Texas and the provisions of section 36.09.095 of the Lubbock Code of Ordinances. Any relocation or revision of existing facilities shall be at the subdivider's expense. Compensation shall be made prior to the recording of this final plat.  
 All existing or proposed utility services to and on tracts indicated by this plat shall be contained in the public right-of-way and public or private utility easements. Utility service installation requested at a future date, and not within an easement indicated by this plat, shall be within a proper utility easement granted by the owner of said property by separate recorded instrument prior to the provision of such service. Such easements shall be at expense of the entity requesting such installation.  
 No building permit shall be issued on any survey certificate that is not in accordance with an approved final plat unless exception is provided by Planning and Zoning Commission policy or by the Lubbock Code of Ordinances.  
 Minimum floor elevations shall conform to the requirements of the Lubbock Drainage Criteria Manual, as adopted by Ord. 10022, as amended, and Ord. 10021, as amended, of the City of Lubbock, Texas.  
 Any easements or rights-of-way shown as "to be dedicated by separate instrument" are shown hereon for information purposes only. This plat does not dedicate said easements.  
 As graphically plotted, either all or a portion of this surveyed property lies within the limits of a "Special Flood Hazard Boundary". These boundaries are established by the Federal Emergency Management Agency (FEMA), not this surveyor. Flood hazard maps are on file at City Hall, Lubbock, Texas, and are open for public inspection.

**ADDITIONAL NOTES:**  
 West plat limits contains 3.825 acres East plat limits contains 3.961 acres  
 CCFN-County Clerk File Number  
 R-O-W - Right of Way  
 UUE-Underground Utility Easement  
 USE-Underground Street Light Cable Easement  
 TPE-Transformer Pad Easement (4'x6')  
 LPL-Lubbock Power and Light Company  
 SPS-Southwestern Public Service  
 SPEC-South Plains Electric Co-op  
 ●-Indicates found 1/2" iron rod with cap (HUGO REED ASSOC)  
 ○-Indicates set 1/2" iron rod with cap (HUGO REED ASSOC)

**SURVEY CONTROL:**  
 NAD83: Coordinates shown hereon as "NAD83" are relative to the Texas Coordinate System of 1983, North Central Zone datum as described in Texas Natural Resources Code, Title 2, Chapter 21, as amended. Coordinates are "grid" coordinates. Distances shown are surface, U.S. Survey feet.  
 Bearings are relative to Grid North, Texas Coordinate System of 1983, North-Central Zone, (2011, epoch 2010.0)  
 A legal description of even survey date herewith accompanies this plat.  
 No abstract of title or title commitment was provided to this surveyor for this proposed plat. Any record research done by this surveyor was made only for the purpose of determining the boundary of this property (and as it may relate to adjoining parcels or rights-of-way). Record documents other than those shown on this plat may exist and encumber this property. This plat does not constitute or imply a complete title examination and any such title examinations are not the responsibility of this surveyor.

Know all men by these presents:  
 That I, Robert A. Christopher, do hereby certify that I prepared this plat from an actual and accurate survey of the land and that the corner monuments indicated thereon were properly placed under my personal supervision in accordance with the Subdivision Regulations of the City of Lubbock, Texas.  
 February 27, 2018

*Robert A. Christopher*  
 Registered Professional  
 Land Surveyor No. 5167  
 Licensed State Land Surveyor  
 State of Texas



Approved this \_\_\_\_\_ day of \_\_\_\_\_, 20\_\_\_\_  
 by the City Planning Commission of the City of Lubbock, Texas

Approved \_\_\_\_\_ Chairman

Attest \_\_\_\_\_ Secretary

