

Trombone

# Intermediate Workbook

There are 2 versions of this song - the 1st is mid range buzzing the 2nd is high range or fast buzzing - the object is to concentrate on the difference in buzzing speed - since F can be played 6th pos. the 2 versions only need to change buzzing speed, not positions

Cold Soggy Buns

Two staves of musical notation for 'Cold Soggy Buns'. The first staff is in bass clef, 4/4 time, and contains a sequence of notes: G2, A2, B2, C3, D3, E3, F3, G3, A3, B3, C4, D4, E4, F4, G4, A4, B4, C5. The second staff is also in bass clef and contains notes: G3, A3, B3, C4, D4, E4, F4, G4, A4, B4, C5, D5, E5, F5, G5, A5, B5, C6.

Note: Brass instruments are the only ones with this extra version - it is this second line that can be played with more of the Band

Which Sounds Right

One staff of musical notation for 'Which Sounds Right' in bass clef, 4/4 time. The notes are: G2, A2, B2, C3, D3, E3, F3, G3, A3, B3, C4, D4, E4, F4, G4, A4, B4, C5, D5, E5, F5, G5, A5, B5, C6.

Rain Rain

One staff of musical notation for 'Rain Rain' in bass clef, 4/4 time. The notes are: G2, A2, B2, C3, D3, E3, F3, G3, A3, B3, C4, D4, E4, F4, G4, A4, B4, C5, D5, E5, F5, G5, A5, B5, C6.



	1	2	3	4	5	6	7
(low)	Bb	A	Ab	G		C	
	F	E	Eb	D		F	
(High)	Bb	A	Ab	G			

This is another song that concentrates on changing the buzzing speed - for the high note version you will need to change the positions (Cold Soggy Buns could use the exact positions for both versions) - remember to stretch lips across teeth and use a bit more air pressure (not lip pressure) to make the buzzing faster and the air faster.

### March

Two staves of musical notation in bass clef, 2/4 time. The first staff contains a sequence of eighth notes: G2, A2, B2, C3, D3, E3, F3, G3, A3, B3, C4, D4, E4, F4, G4, A4, B4, C5. The second staff contains a sequence of eighth notes: G3, A3, B3, C4, D4, E4, F4, G4, A4, B4, C5, D5, E5, F5, G5, A5, B5, C6.

Good tone starts with continuous and steady airflow to the instrument. Breathing practices and using a tuner will improve pitch accuracy and create a round and rich

### Mary 2

One staff of musical notation in bass clef, 2/4 time. The notes are: G2, A2, B2, C3, D3, E3, F3, G3, A3, B3, C4, D4, E4, F4, G4, A4, B4, C5.

### Hush Little Baby

Two staves of musical notation in bass clef, 2/4 time. The first staff contains notes: G2, A2, B2, C3, D3, E3, F3, G3, A3, B3, C4, D4, E4, F4, G4, A4, B4, C5. The second staff contains notes: G3, A3, B3, C4, D4, E4, F4, G4, A4, B4, C5, D5, E5, F5, G5, A5, B5, C6.

This song starts with slow buzzing Bb and immediately changes to fast buzzing G - The shape of the Embouchure for Bb is OOO and you quickly change shape to EEEE

Now you are asked to change from slow buzzing Bb to fast buzzing Ab - The shape of the Embouchure for C is OOO and you quickly change shape to EEEE

### Winnie

Musical notation for the song 'Winnie' in bass clef, 2/4 time. The melody consists of quarter and eighth notes. An arrow points from the text box above to a specific note in the melody. The piece concludes with a first ending (1.) and a second ending (2.).

### Dreydle Dreydle

Musical notation for the song 'Dreydle Dreydle' in bass clef, 2/4 time. The melody is characterized by a series of eighth notes with slurs, indicating a legato style. An arrow points from the text box below to a note in the melody.

You could use the same fingerings for both versions of this song (except for the very last note). The highest note is a Bb which is 'open' and very fast buzzing

### Camptown Races

Musical notation for the song 'Camptown Races' in bass clef, 2/4 time. The melody features a mix of quarter and eighth notes.

Remember to keep working on the Legato Style

### Twinkle Twinkle

*Fine*

*D.C. al Fine*

Musical notation for the song 'Twinkle Twinkle' in bass clef, 2/4 time. The melody is a simple sequence of eighth notes. The piece ends with a double bar line.



Lightly Row

Old English Song

To be awarded this level you must: Know the Notes, Fingerings and Rhythms. You must also play with a pleasing Tone, use Breath Control and Style.

Belt Level Awarded \_\_\_\_\_

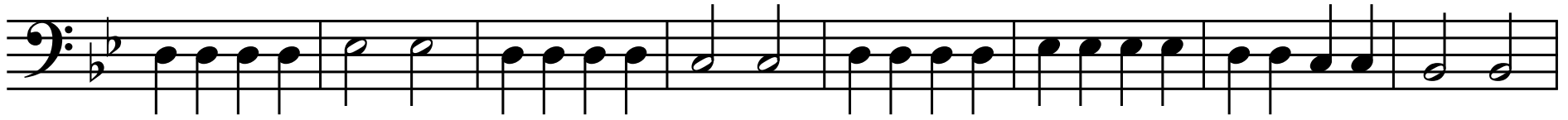
BLUE BELT STICKER TO  
BE PLACED HERE WHEN  
YOU ARE READY

Good Night Ladies

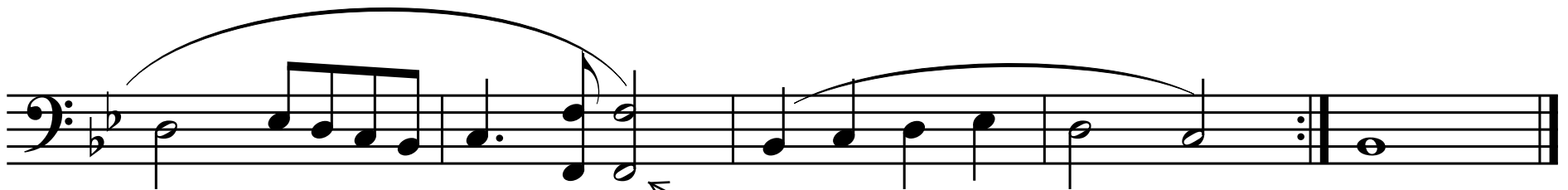


More Buzzing speed practice - "Overtones"

Whose on First



Angles We Have Heard on High



The lower note is a low note F played pos. 6 - you will need to form a real OOO shape and make sure your teeth are open to get a deep rich tone - there are 2 notes which gives you a choice (either play the top or bottom - not both)

This song covers the range from Low Bb all the way to High Bb (an Octave) - concentrate on the overtone you need to use and adjust the embouchure accordingly

### Here Comes the Bride

1.

The first staff of music for 'Here Comes the Bride' is written in bass clef with a key signature of two flats (Bb and Eb). It consists of 12 measures. The first measure contains a half note G2. The second measure contains a dotted quarter note G2 followed by an eighth note A2. The third measure contains a half note Bb2. The fourth measure contains a dotted quarter note Bb2 followed by an eighth note C3. The fifth measure contains a half note C3. The sixth measure contains a dotted quarter note C3 followed by an eighth note D3. The seventh measure contains a half note D3. The eighth measure contains a dotted quarter note D3 followed by an eighth note Eb3. The ninth measure contains a half note Eb3. The tenth measure contains a dotted quarter note Eb3 followed by an eighth note E3. The eleventh measure contains a half note E3. The twelfth measure contains a dotted quarter note E3 followed by an eighth note F3. A bracket labeled '1.' spans from the eighth measure to the end of the staff.

2.

The second staff of music for 'Here Comes the Bride' is written in bass clef with a key signature of two flats. It consists of 12 measures. The first measure contains a half note G2. The second measure contains a dotted quarter note G2 followed by an eighth note A2. The third measure contains a half note Bb2. The fourth measure contains a dotted quarter note Bb2 followed by an eighth note C3. The fifth measure contains a half note C3. The sixth measure contains a dotted quarter note C3 followed by an eighth note D3. The seventh measure contains a half note D3. The eighth measure contains a dotted quarter note D3 followed by an eighth note Eb3. The ninth measure contains a half note Eb3. The tenth measure contains a dotted quarter note Eb3 followed by an eighth note E3. The eleventh measure contains a half note E3. The twelfth measure contains a dotted quarter note E3 followed by an eighth note F3. A bracket labeled '2.' spans from the eighth measure to the end of the staff.

### Sing Noel

The musical notation for 'Sing Noel' is written in bass clef with a key signature of two flats. It consists of 12 measures. The first measure contains a half note G2. The second measure contains a dotted quarter note G2 followed by an eighth note A2. The third measure contains a half note Bb2. The fourth measure contains a dotted quarter note Bb2 followed by an eighth note C3. The fifth measure contains a half note C3. The sixth measure contains a dotted quarter note C3 followed by an eighth note D3. The seventh measure contains a half note D3. The eighth measure contains a dotted quarter note D3 followed by an eighth note Eb3. The ninth measure contains a half note Eb3. The tenth measure contains a dotted quarter note Eb3 followed by an eighth note E3. The eleventh measure contains a half note E3. The twelfth measure contains a dotted quarter note E3 followed by an eighth note F3.

Don't play too slow and keep working on a legato style

### Peace is Flowing Like a River

The first staff of music for 'Peace is Flowing Like a River' is written in bass clef with a key signature of two flats. It consists of 12 measures. The first measure contains a half note G2. The second measure contains a dotted quarter note G2 followed by an eighth note A2. The third measure contains a half note Bb2. The fourth measure contains a dotted quarter note Bb2 followed by an eighth note C3. The fifth measure contains a half note C3. The sixth measure contains a dotted quarter note C3 followed by an eighth note D3. The seventh measure contains a half note D3. The eighth measure contains a dotted quarter note D3 followed by an eighth note Eb3. The ninth measure contains a half note Eb3. The tenth measure contains a dotted quarter note Eb3 followed by an eighth note E3. The eleventh measure contains a half note E3. The twelfth measure contains a dotted quarter note E3 followed by an eighth note F3. A slur covers the entire staff.

The second staff of music for 'Peace is Flowing Like a River' is written in bass clef with a key signature of two flats. It consists of 12 measures. The first measure contains a half note G2. The second measure contains a dotted quarter note G2 followed by an eighth note A2. The third measure contains a half note Bb2. The fourth measure contains a dotted quarter note Bb2 followed by an eighth note C3. The fifth measure contains a half note C3. The sixth measure contains a dotted quarter note C3 followed by an eighth note D3. The seventh measure contains a half note D3. The eighth measure contains a dotted quarter note D3 followed by an eighth note Eb3. The ninth measure contains a half note Eb3. The tenth measure contains a dotted quarter note Eb3 followed by an eighth note E3. The eleventh measure contains a half note E3. The twelfth measure contains a dotted quarter note E3 followed by an eighth note F3. A slur covers the entire staff.



# Fundamental Music Instruction



# Beginner Band Skill Levels

Shoo Fly (Mid Range and High Range)

Suprise Symphony

To be awarded this level you must: Know the Notes, Fingerings and Rhythms. You must also play with a pleasing Tone, use Breath Control and Style.

Belt Level Awarded \_\_\_\_\_

GREEN BELT STICKER  
TO BE PLACED HERE  
WHEN YOU ARE READY



*To this point we have learned many facets of musicianship – some of these are:*



- *Breathing as a musician*
- *Mouth muscle formation – Embouchure*
- *Proper technique for holding the instrument*
- *Tone production – (playing with a pleasing sound)*
- *Rhythm + music notation*
- *Finger Combinations to change pitch*
- *Notes ranging from Low Note F to High Note Bb*
- *Legato and Stacatto styles*



The following songs are an opportunity to “put it all together”. They are all longer and require many if not all the many concepts discussed so far. Try to study them so that you will be comfortable with your own performance. You, the performer, are the best to critique the sound quality and musical style being produced. If you develop the skill of truly listening to the overall effect of the musical performance you are creating, it will help you progress faster than any teacher can. Play, practice and most of all – listen and enjoy!



Review: Syncopation = short, long, short long  
(eighth quarter eighth quarter)

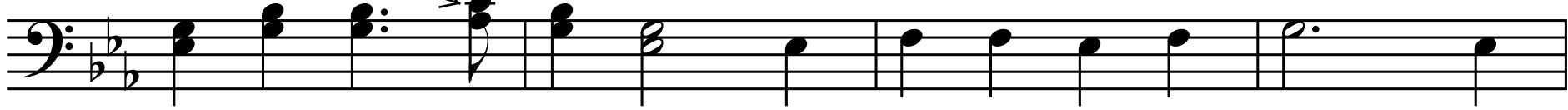
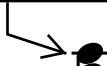
### Go Tell it on th Mountain



*Fine*



This is High Note C (remember you may also play the Ab instead)

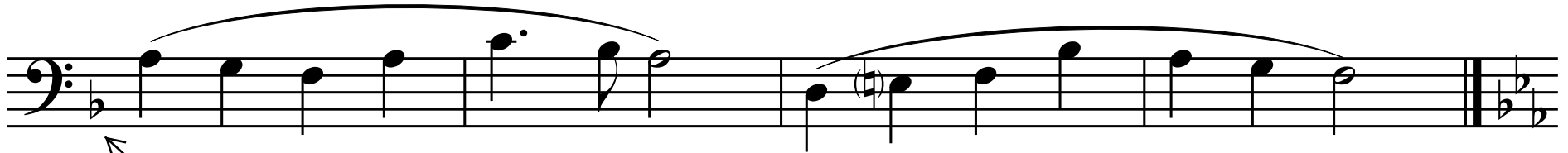
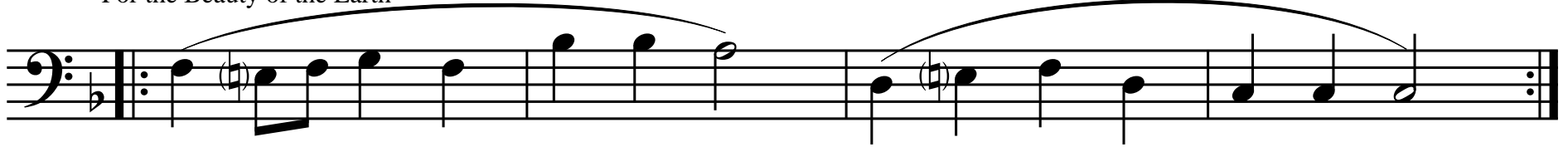


*D.C. al Fine*



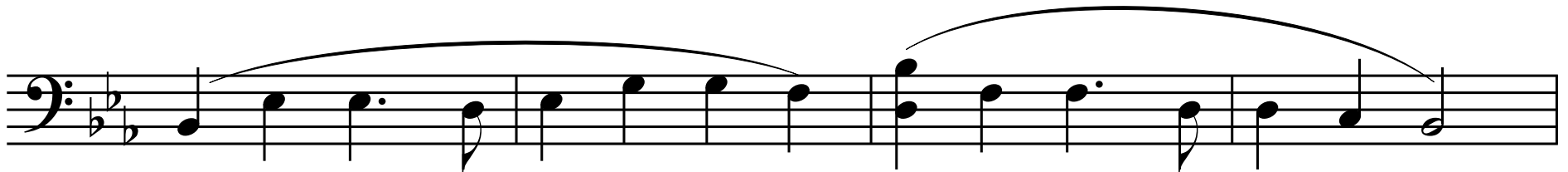
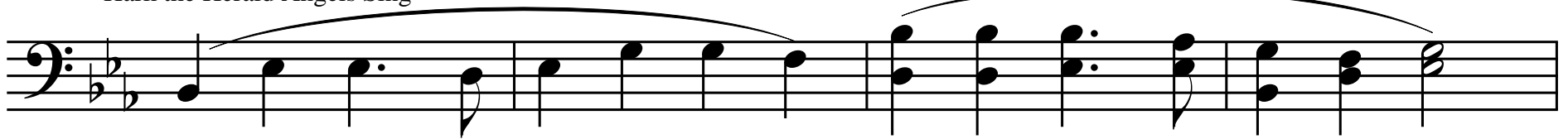
High Note C is 3rd position and needs a super fast buzzing speed - it is on the highest overtone we have used so far.

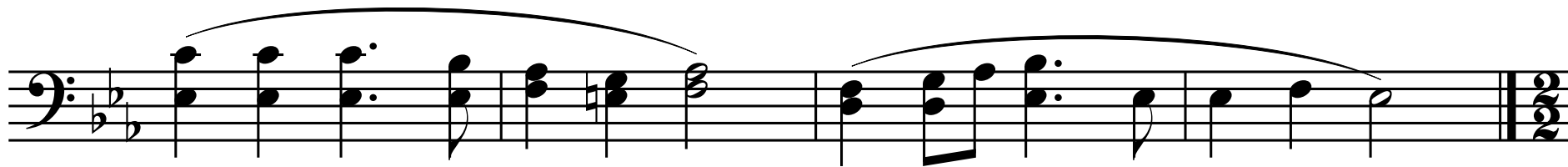
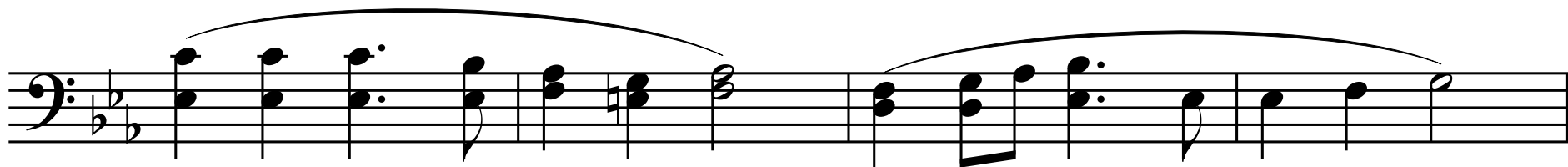
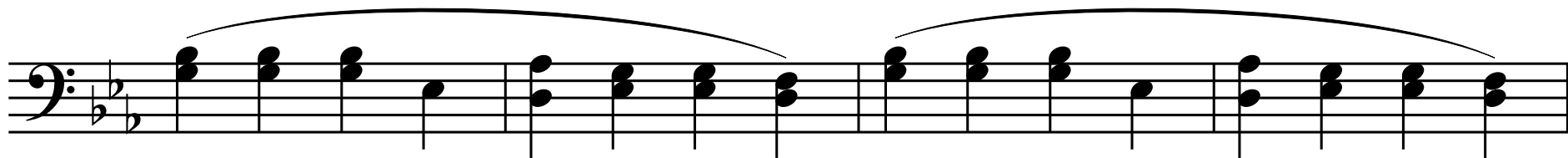
For the Beauty of the Earth



This Key signature has only Bb this puts A and E in 2nd position

Hark the Herald Angels Sing









Silent Night

Try for a warm soft (but supported) tone

Low Note G - OOO shape, open teeth, slow Buzzing

The first staff of music is in bass clef with a 3/4 time signature. It begins with a low G note (G2) on the first line, followed by a half note G2 and a quarter note G2. The melody continues with a half note F2, a quarter note E2, and a half note D2. A slur covers the final two measures, which contain a half note C2 and a quarter note B1.

The second staff continues the melody from the first. It starts with a half note C2 and a quarter note B1, followed by a half note A1, a quarter note G1, and a half note F1. The melody then rises with a quarter note E1, a half note D1, a quarter note C1, and a half note B0.

The third staff continues the melody. It begins with a half note A1 and a quarter note G1, followed by a half note F1, a quarter note E1, and a half note D1. The melody then rises with a quarter note C1, a half note B0, a quarter note A0, and a half note G0.

The fourth and final staff of music shows the concluding measure. It starts with a half note G0 and a quarter note F0, followed by a half note E0, a quarter note D0, and a half note C0. The piece ends with a double bar line and a final bass clef.



Deck the Halls

Musical notation for 'Deck the Halls' in bass clef, 3/4 time signature. The piece consists of three staves of music. The first staff begins with a repeat sign and a first ending bracket. The second staff continues the melody with various note values and rests. The third staff concludes the piece with a double bar line and a final 3/4 time signature.

Away in a Manger

Musical notation for 'Away in a Manger' in bass clef, 3/4 time signature. The piece consists of two staves of music. The first staff begins with a first ending bracket labeled '1.' and an arrow pointing to the start of the melody. The second staff continues the melody with a second ending bracket labeled '2.' and concludes with a double bar line and a final 3/4 time signature.

This song starts with very fast buzzing - set this shape before you begin

