

Estate Auction

19183 McFarland Rd.
Sedalia, MO

Due to the passing of Bill and Thelma Ficken, the following will be sold at auction located from 50 Hwy in Sedalia, north on Hwy 65 approx 3½ miles to HH, then 4½ miles on HH to Olive Branch, then 1½ miles on Olive Branch, then turn left on McFarland Rd. 1½ miles to sale on:

Saturday, March 6th, 2021 - 10 am



UTILITY VEHICLE

2019 Kubota RTX X1120 diesel, hyd dump bed, power steering, 98hrs, one owner



CAR

2011 Cadillac SRX leather seats, mocha color, 79,950 miles, Sharp!



PICKUPS

1993 Chevy Silverado 3500, 6.5 Turbo diesel, 5 spd on floor, w/ overload springs, 4x4, 122k miles, one owner, nice truck



1998 Toyota T100 ext cab, 4x4, auto, V6, Rhino bed liner, 221k miles



1997 Ford 350 Dually 7.3 diesel, auto, 4 door, good cond.



1942 John Deere A, restored



1963 John Deere 1010 New Generation Series utility tractor, wide front, one owner



TRACTORS

John Deere 5085M, 1202 hrs., Cab, 85 hp, 16 spd, Power Reverser, Joystick, FWA. w/JD 553 loader



John Deere 6125R, 1157 hrs., Cab, 125 hp, 24 spd, Power Reverser, Joystick, FWA, w/JD 340 loader, one owner



TRUCKS

1997 Int. 4700, DT466E automatic, disc brakes, 16' grain bed w/hoist, SRT-2 Spool Roll tarp



1987 Int. S1900 5/2 spd, 466 diesel, 453k miles, disc brakes, 18' Grain bed w/hoist, SRT-2 Spool roll tarp

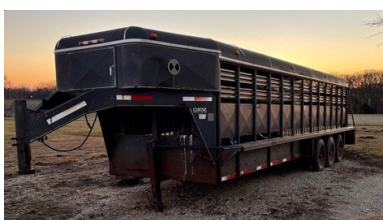


FLATBED TRAILERS

2014 24' w/4' Dovetail Gooseneck flatbed trailer, 7000# axles



2004 28' w/6' Dovetail, Pintle hitch flatbed trailer, 10,000 axles



STOCK TRAILER

2000 Coose 26' triple axle Gooseneck stock trailer

(left)
1989 Ford F800 370-4V 2 ton, 51k miles, flatbed, 5 spd, hoist, runs



FARM EQUIPMENT

John Deere 568 5x6 big round baler, less than 1500 bales



John Deere 1560 no-till drill, 10', markers, grass seed box



John Deere 1750 Conservation 6 row planter, w/monitor, corn and bean meters

John Deere 637 17'11" disk, w/3 bar harrow

Phoenix model H-14 45' Rotary Harrow

Peco Kost Kutter 2 ton feed grinder, tandem wheels

Brush Boss JD6 77" brush and root grapple rake, for John Deere loader

John Deere 4 wide-row Cultivator

Redline 24' Hyd. Pasture harrow

John Deere 709 7' brush cutter

John Deere 7' disk, tandem, 3 pt John Deere ground driven Manure spreader

John Deere 4-14 bottom plow

John Deere 11 Shank mounted chisel plow

John Deere 18' Mounted field Cultivator w/ 3 bar harrow

John Deere 2600 4-16 bottom Plow

Hesston S222 pto driven Manure Spreader

John Deere 4 Row Rotary hoe

2-2 section Field Harrows

3 pt hd 9' Blade

3 pt Big Bale Carrier

3 pt 2 Row Cultivator

3 pt Sub Soiler, 2 shank

35' gas Auger and 40' pto driven Auger

16' x 4" auger

Add-a-Grapple, adj. to fit 65-87" skid steer or tractor loader bucket

Clark 200 gal Sprayer, 3 pt, elect. Shut-off

Danhuser post hole digger

Quick Sledge post driver for skid steer, like new

2-Bale Spike for John Deere loader

Pop-up Bale loader

John Deere 24T square baler

Klaus 450S tedder



DOZER

John Deere 450 dozer, diesel, w/ angle blade

John Deere 7' 6-way blade for Skid Steer



DUMP TRUCK

99 Int DT530 4900 dump truck, 15' gravel bed, 10 spd 8.7 L 221k miles, 52,000 gvm

FARM and RELATED ITEMS

Pride creep feeder

4 Poly feed bunks

2-7' Hay and grain feed bunks

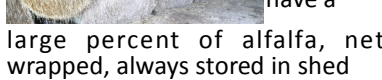
Wooden walk-thru gates

Misc wire and cattle panels

C Farmex grain moisture tester

Axle Mount duals and hubs for John Deere 4230

100 Gal fuel tank, w/12 volt pump, for pickup



HAY

200+ Bales
5x6 3 yr
old Hay,
Several
have a

large percent of alfalfa, net wrapped, always stored in shed

BOAT

12' Jon Boat

1967 Evinrude 3 hp motor, has title

Several fishing poles

MOTORCYCLE

1974 Honda trail bike, has title



SHOP TOOLS

Continental Shop Hoist 4000 4 ton cherry picker

30 ton Continental Shop Press

Black Max 2 Stage 6 ½ hp

Industrial Air Compressor

4000 Watt Generator w/Tecumseh motor

Craftsman 10" Compound miter saw

Task Force 10" table saw

Welding table, 8 ½ x 4 w/6" Vise

Waterloo 2 drawer tool cabinet

6 & 7 drawer tool cabinets

10 gal. Contractors Shop vac

12 gal Shop Vac

Band saw

5 spd hd Drill Press

Daytona 8" double wheel bench grinder

Bosch 9" angle grinder
Craftsman angle grinder
Miller thunderbolt acdc Welder

3 Ton Floor jack
HiLift jack

24" & 36" Ridgid pipe wrenches

Antique post vise

Wagner power sprayer

Set large crescent wrenches, 1 13/16, 1 7/8, 2"

Ratchets, sockets, BE&OE wrenches, crescents, impact sockets, etc

Pneumatic chisel

Titanium high speed drill bit set

Cutting torch, cart, gauges

Schumacher 10/30 fast Charger

Schauer 10 amp battery charger

Reddy space heater

Sev. Large log chains

24' Fiberglass Ext. ladder

Werner 4' & 6' fiberglass step ladders

2 Wheel truck dolly

Some hand tools, screws, nuts, implement parts, etc

Antique Railroad spike puller

HOUSEHOLD and COLLECTIBLES

J600ES Electric Wheelchair

Antique kitchen cabinet bottom w/ enamel top

Nice 70" dining table, 6 chairs

Octagon wood look formica top kitchen table, 4 chairs on casters

LazyBoy rocker-recliner

Whirlpool washer and dryer, w/risers

Frigidaire hd commercial chest type freezer

HD Wood heating stove

NTec infrared heater

Antique buffet

Rustic look entertainment cabinet

5 gal Cream can

Enamelware roaster, dish pans, others

Kenmore microwave, other small kitchen appliances

Cavalier cedar chest/gloo 5 gal cooler, others

Hall table

Dishes, pots, pans, misc kitchen items

Blue Ball jars, others

Other misc furniture

Older Singer sewing machine in cabinet

Metal filing cabinet/safe combo

2 & 4 drawer Filing cabinets

C30's Dresser and Chest of drawers

Some vintage toys, 1969 Hot Wheels box, Magnetic pickup Stix, etc

Mo pacific Engine Box lock

Knife, marked Pal USA U.S.N.

1905 Crowell Peerless 20th Century Atlas

LAWN and GARDEN

John Deere Z-trak 737 0-Turn mower

Swisher XZT60 0-Turn mower, 60" deck

Troy Bilt Horse tiller

Woodsplitter attachment for Troybilt tiller

John Deere CS56 18" Chainsaw

Echo CS500P 24" chainsaw

Echo 750 VL 24" Chainsaw

3 pt Lister

25 gal ATV sprayer

Echo gas Weed Trimmer, straight shaft

1947 2-Wheel utility trailer

Other items too numerous to mention

Larry DRENON AUCTION Since 1969

Larry 660-596-8515 Laramie 660-221-4386
Lacey 660-723-1104 Cooper 660-723-2221

Office: 660-723-6188
www.DrenonAuction.com

Auctioneer's Note: This is a large sale with something for everyone. We will begin with two rings, and we plan to start the machinery and vehicles around noon. The Kubota and tractors have low hours and are in great condition; the Cadillac is sharp with low mileage. Bring a friend and enjoy the day with us at this excellent auction!

Estate & Family of **BILL AND THELMA FICKEN**

660-620-4859

Terms: Cash, approved check or credit/debit card (Convenience Fee Applied.). Nothing to be removed until settled for. Not responsible for accidents. Statements made day of sale take precedence over printed material. **LUNCH SERVED.**