



Made for layering, this two-toned marled cardigan livens up any office or casual look.

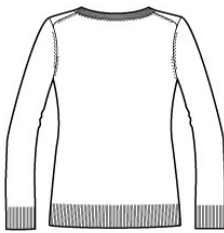
- 60/40 cotton/acrylic
- Fully fashioned seams
- Dyed-to-match buttons
- Welt pockets with rib knit trim
- 2x2 rib knit cuffs and hem

CARE INSTRUCTIONS

Machine wash cold with like colors, only non-chlorine bleach when needed, tumble dry low, low iron if needed.

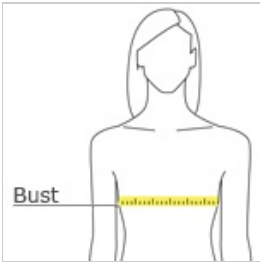


front



back

HOW TO MEASURE



**BUST**  
Measure under the arm and around the fullest part of the bust with arms down, keeping tape horizontal.

SIZE CHART

	XS	S	M	L	XL	XXL	3XL	4XL
Size	2	4/6	8/10	12/14	16/18	20/22	24/26	28/30
Chest	32-34	35-36	37-38	39-41	42-44	45-47	48-51	52-55

COLOR INFORMATION



Black Marl  
PMS NTR BLACK



Navy Marl  
PMS NO MATCH



Warm Grey Marl  
PMS NO MATCH