

WILDLIFE of GOLD HILL

SAGLE, IDAHO



WHITE-TAILED DEER *Odocoileus virginianus* (Large tail white underneath, no black tip, erect when startled, antlers branch up from main beam, numerous in populated areas near lake)



MOOSE *Alces alces* (Large, ungainly, dark brown body, gray legs, big overhanging snout, distinctive "palmate" antler)



ELK *Cervus canadensis*
(Large pale yellow rump patch, small white tail)

AMERICAN BLACK BEAR *Ursus americanus*



COYOTE *Canis latrans*



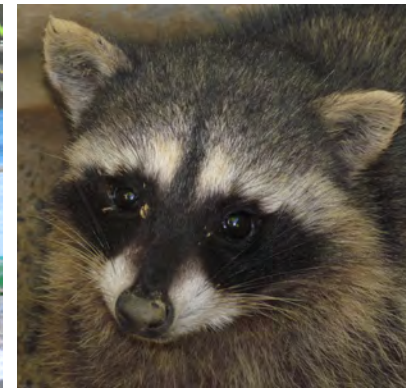
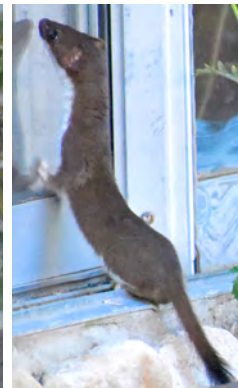
RED FOX *Vulpes vulpes* (Bushy tail with white tip)



MOUNTAIN LION *Puma concolor*



SHORT-TAILED WEASEL *Mustela erminea*
(Turns all white in winter except black tail tip)



COMMON RACCOON *Procyon lotor*
(Black face mask, rings on tail)



AMERICAN RED SQUIRREL *Tamiasciurus hudsonicus*
(Ear tufts, black side stripe between the white belly and gray back)

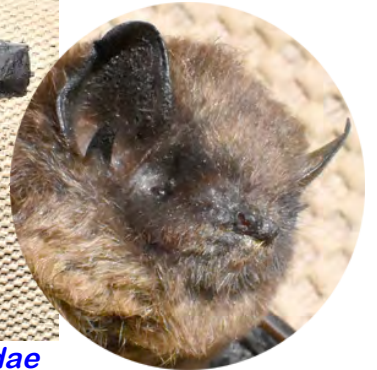


WESTERN CHIPMUNK *Neotamias* sp.
(possibly the "LEAST CHIPMUNK" *Neotamias minimus*)



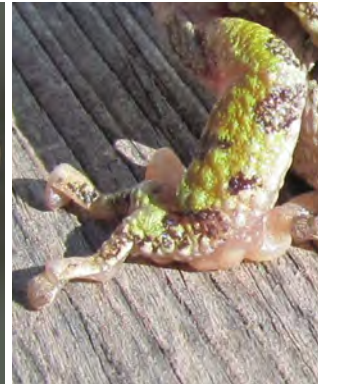


SNOWSHOE HARE *Lepus americanus* (Brown-gray in summer, turns all white in winter except black ear tips, very large hind feet)



DEER MOUSE *Peromyscus maniculatus* (White feet and belly, tail dark above and white below and as long as rest of body)

VESPER BAT *Vespertilionidae*



SIERRAN TREE FROG *Pseudacris sierra* (Small frog, less than 2", black or dark brown eye stripe from nose across eye to shoulder, color variable green to gray or brown, pads on toe-tips)



COMMON GARTER SNAKE *Thamnophis sirtalis* (Variable color but usually with dorsal and lateral stripes and red blotches on sides)



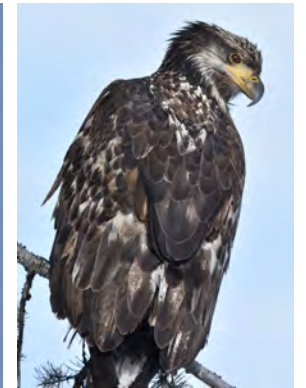
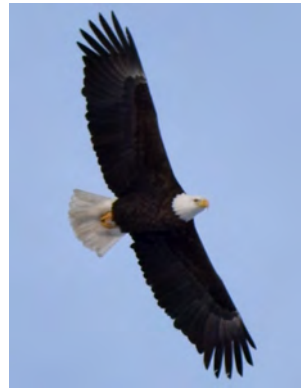
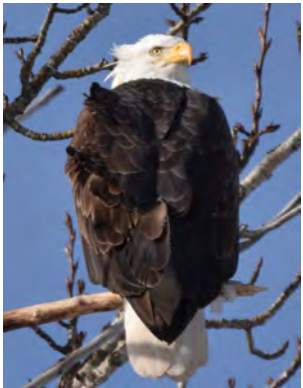
AMERICAN COOT *Fulica americana* (Rare visitor from lake, "chicken-like" in appearance)

WILD TURKEY *Meleagris gallopavo* (Adult male has hanging "beard" on breast)

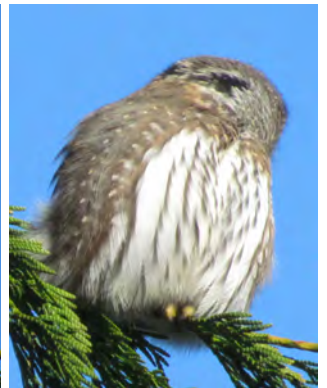


RUFFED GROUSE *Bonasa umbellus* (Head crest, neck ruff prominent in males)

CALIFORNIA QUAIL *Callipepla californica* ("Comma-shaped" plume on crown of head)



BALD EAGLE *Haliaeetus leucocephalus*

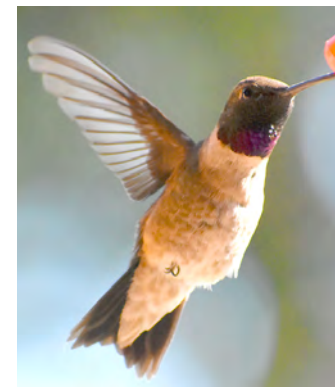


RED-TAILED HAWK *Buteo jamaicensis*

BARRED OWL *Strix varia*

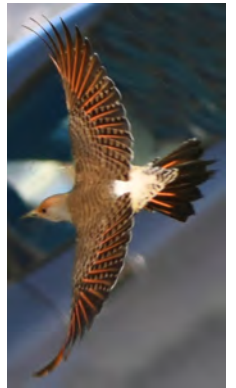
NORTHERN PYGMY-OWL

Glaucidium gnoma (Very small owl, "eye-like spots on back of head")



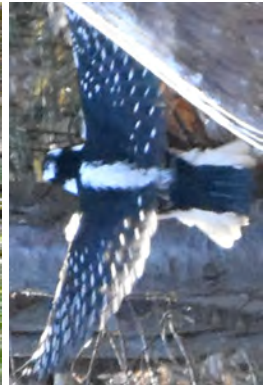
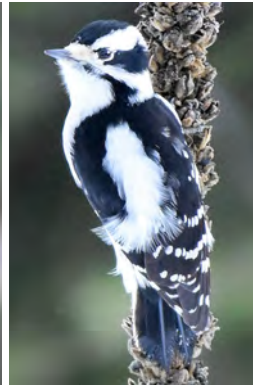
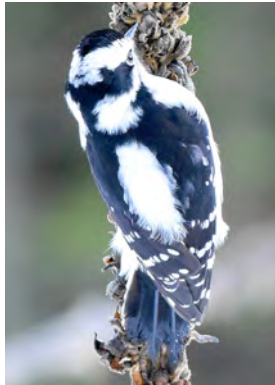
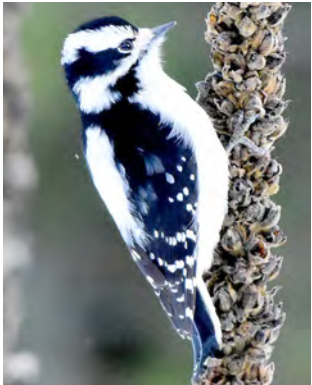
RUFOUS HUMMINGBIRD *Selasphorus rufus* (Adult male perched, females)

BLACK-CHINNED HUMMINGBIRD
Archilochus alexandri



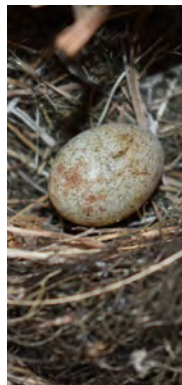
PILEATED WOODPECKER *Dryocopus pileatus*
(Almost big as a crow, male has red stripe on cheek, pecks squarish holes in tree trunks, fast “wuk” series call)

RED-SHAFTED FLICKER *Colaptes auratus*
(Underside of wings in flight salmon colored, male has red cheek, “kyeer” call)



DOWNY WOODPECKER *Dryobates pubescens* (Short bill, color and pattern very similar to Hairy Woodpecker)

HAIRY WOODPECKER *Dryobates villosus* (Male has red patch on back of head, body larger than Downy Woodpecker and bill much longer)

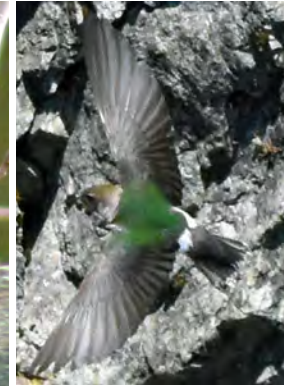


RED-NAPED SAPSUCKER
Sphyrapicus nuchalis

CORDILLERAN FLYATCHER *Empidonax occidentalis*



TREE SWALLOW *Tachycineta bicolor* (White throat and breast, white doesn't extend above eye, back blue-black, immature grayish, catches insects in flight)



VIOLET-GREEN SWALLOW *Tachycineta thalassina* (White extends above eye, back green-black, white rump patches in flight)



COMMON RAVEN *Corvus corax* (Larger than crow, heavier bill, back of tail rounded or "V" shaped in flight)

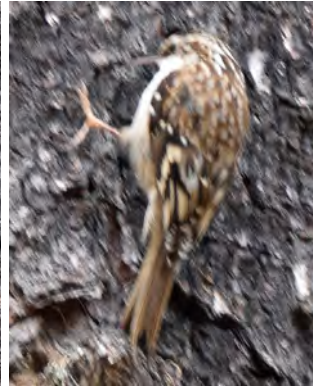
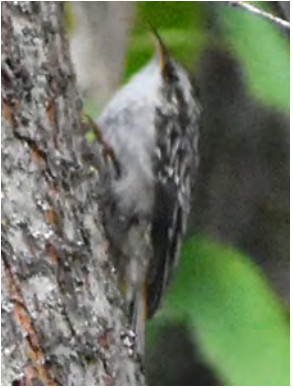
STELLER'S JAY *Cyanocitta stelleri* (A camp robber)



BLACK-CAPPED CHICKADEE *Poecile atricapillus*



CHESTNUT-BACKED CHICKADEE *Poecile rufescens*



BROWN CREEPER *Certhia Americana*



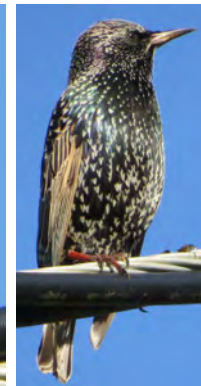
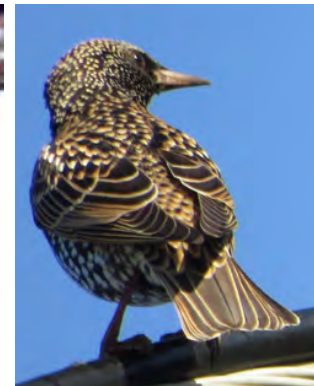
RED-BREASTED NUTHATCH *Sitta canadensis*



AMERICAN ROBIN *Turdus migratorius*



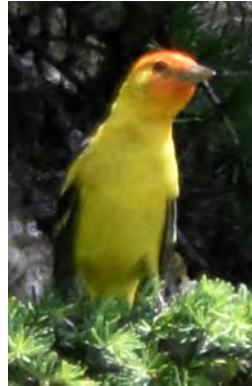
VARIED THRUSH *Ixoreus naevius*



EUROPEAN STARLING *Sturnus vulgaris*



TOWNSEND'S WARBLER *Setophaga townsendi*



NASHVILLE WARBLER *Oreothlypis ruficapilla*

WESTERN TANAGER *Piranga ludoviciana*



CHIPPING SPARROW *Spizella passerina*

SONG SPARROW *Melospiza melodia*
(Distinctive breast Spot, melodious song)



DARK-EYED JUNCO *Junco hyemalis*



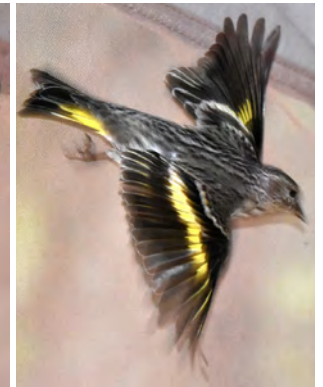
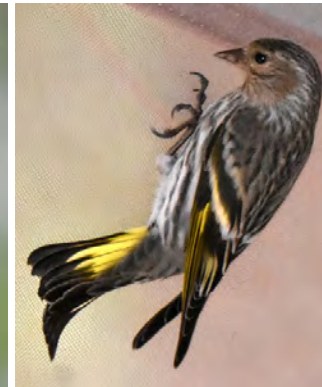
BLACK-HEADED GROSBEAK *Pheucticus melanocephalus*



EVENING GROSBEEK *Coccothraustes vespertinus*
(Male has yellow brow)



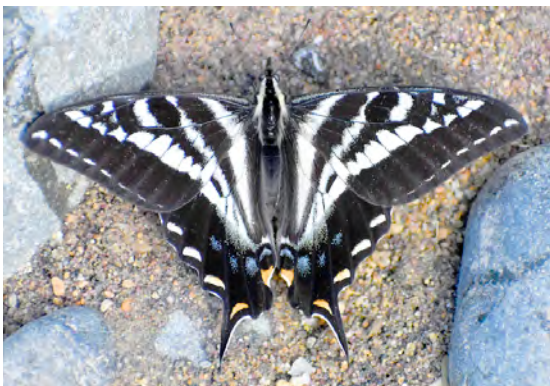
PINE SISKIN *Spinus pinus*



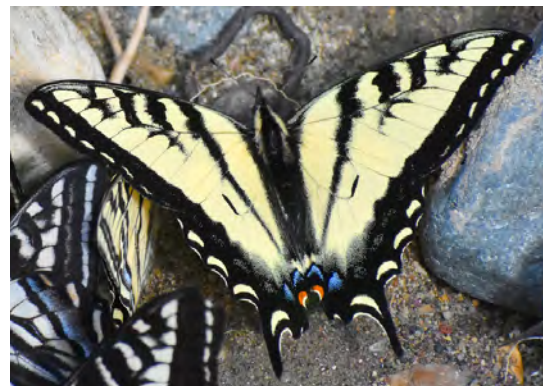
GREEN COMMA BUTTERFLY *Polygonia faunus* (Outer wing margins irregularly toothed, unique pattern of spots on top, underside grayish)



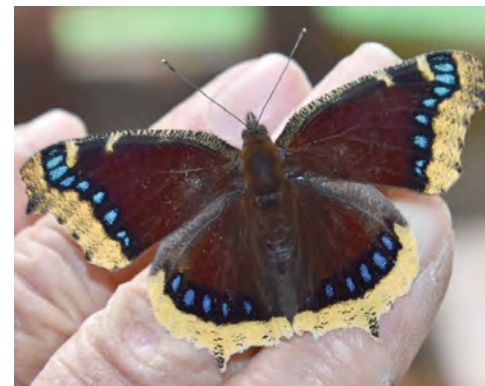
LORQUIN'S ADMIRAL BUTTERFLY *Limenitis lorquini*



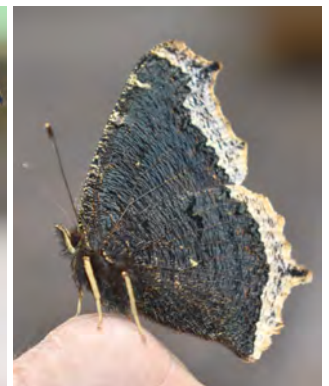
PALE SWALLOWTAIL BUTTERFLY *Papilio eurymedon*

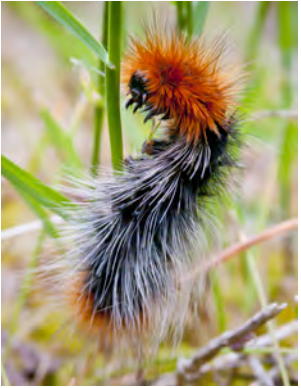


WESTERN TIGER SWALLOWTAIL BUTTERFLY *Papilio rutulus*



MOURNING CLOAK BUTTERFLY *Nymphalis antiopa*





RANCHMAN'S TIGER MOTH *Arctia virginalis*



FINGERED DAGGER MOTH *Acronicta dactylina*



POLYPHEMUS MOTH *Antheraea polyphemus*
(Our largest moth)



WHITE UNDERWING MOTH *Catocala relict*



WESTERN YELLOWJACKET *Vespula pensylvanica*
(Nests underground or in hollow trees and logs)



BALD-FACED HORNET *Dolichovespula maculata*
(Builds above-ground paper nests in trees, bushes and under eaves)



NEVADA BUMBLE BEE *Bombus nevadensis*
(Furry body, larger than honey bee)

These are some of the animals most likely to be seen on Gold Hill, but not all.

You can download this document at (<http://www.campgroundcritters.com>).

*For more details on Idaho Wildlife, download the Idaho Dept. of Fish and Game Species Guide at (<https://idfg.idaho.gov/species/>)
or the Idaho State Univ. "Atlas of Idaho's Wildlife" at (<https://digitalatlas.cose.isu.edu/bio/atlswf.pdf>).*

*Unless otherwise credited, photos by Tom Bright
December 2019*