



**RECREATIONAL  
INDUSTRIES**

# Outdoor Play Solutions PLAY STRUCTURES

MODEL / CW-004



AGES 2-12 / USE ZONE 38' X 22' / CAPACITY 26 / MAX FALL HEIGHT 5'

## FEATURES (9)

ADA Transfer Station  
Wave Slide  
Education Climber  
Vertical Ladder w/Gate  
90 Degree Curve Slide  
Clover Climber

Pipe Wall w/ Wheel  
Steering Wheel  
Tic-Tac-Toe Panel

## WARRANTY

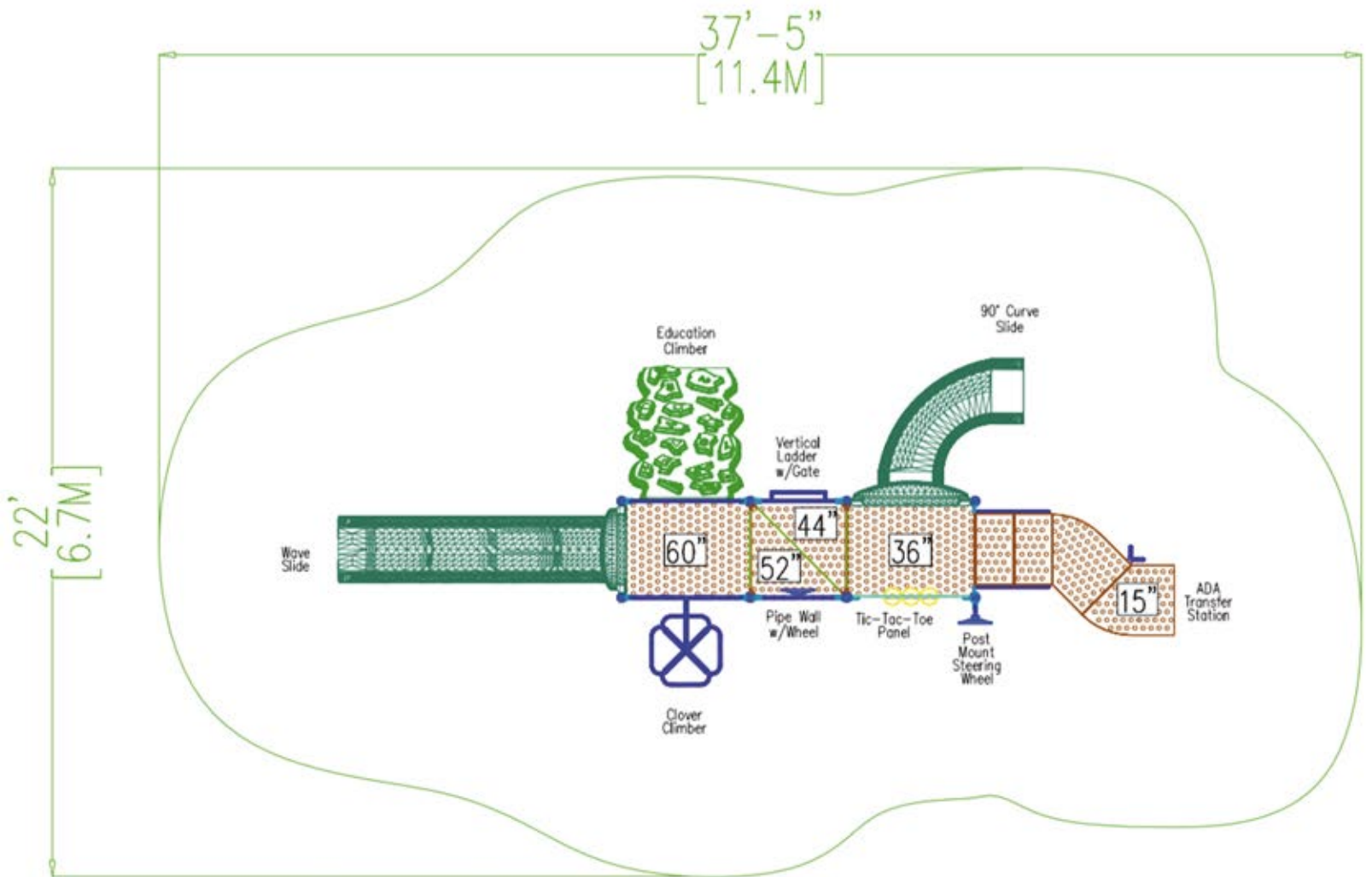
Limited lifetime on steel posts, stainless steel hardware, component clamps and aluminum post caps.  
15 year limited warranty on pipes, rungs, loops and rails.  
15 year limited warranty on roto-molded plastics and HDPE plastic sheets.  
15 year limited warranty on punched steel decks.  
5 year warranty on cables and nets.  
1 year limited warranty on moving parts.

[www.recreationalindustries.com](http://www.recreationalindustries.com)  
Phone 352.234.6894



**RECREATIONAL  
INDUSTRIES**

**MODEL / CW-004 / TOP PLAN VIEW**





# RECREATIONAL INDUSTRIES

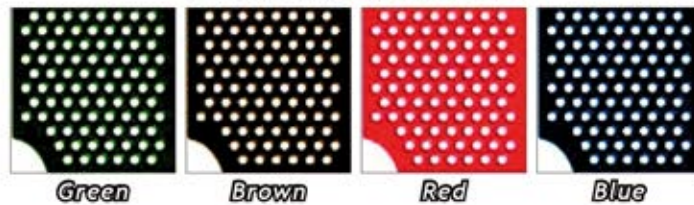
## CW / COLOR OPTIONS

### Plastics

<i>Fuschia</i>	<i>Wine</i>	<i>Red</i>	<i>Orange</i>	<i>Dark Terra Cotta</i>	<i>Tan</i>
<i>Purple</i>	<i>Royal Blue</i>	<i>Cobalt</i>	<i>Sky Blue</i>	<i>Teal Blue</i>	<i>Teal Green</i>
<i>Spring Green</i>	<i>Light Green</i>	<i>Dark Green</i>	<i>Brown</i>	<i>Gray</i>	<i>Black</i>
<i>Light Yellow</i>		<i>Yellow</i>	<i>White</i>		



### Decks, Bridges, and Stairs



Red, blue, and green will take 4-6 additional weeks for delivery.

### Shade Fabric Colors



Color your playground! Choosing the right color for your playground is such an important step. Do you want your playground to blend in with its natural surroundings or stand out and be noticed? Whatever you prefer, we have the perfect color combination for you. With 21 plastic colors and 20 metal colors available, and 12 shade colors, we're sure you'll find just what you are looking for! Weather-Shield™ is an optional extra step in our normal coating process, which offers enhanced corrosion protection to your playground. The coating process begins with our standard triple-coated, corrosion-resistant Allied steel tubing. Next, a layer of an environmentally-friendly epoxy powder coating—specially formulated to greatly improve corrosion protection, chemical resistance, and edge coverage—is applied. Finally we apply our polyester powder coating finish color, which offers superior protection against UV exposure. Perfect for harsh weather conditions or coastal locations, our Weather-Shield™ application processes will greatly lengthen the life of your playground investment. Note: There is an up-charge of 5% on retail price for Weather-Shield™.

### Metals

