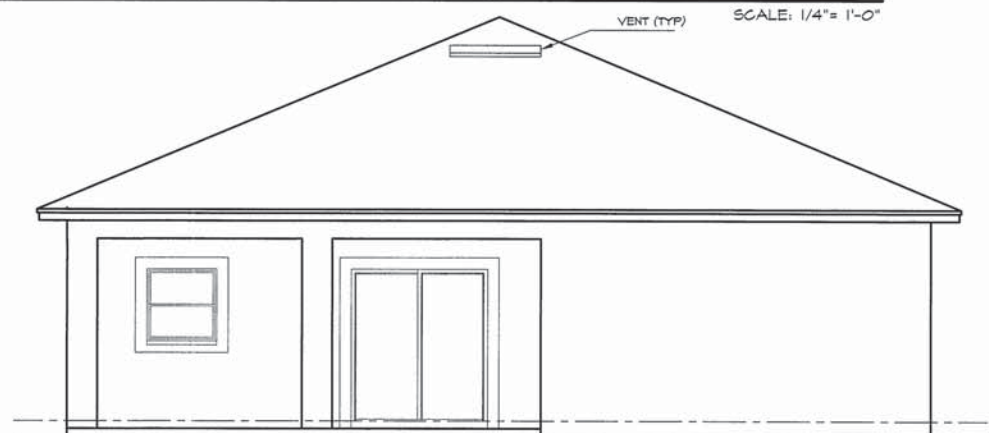




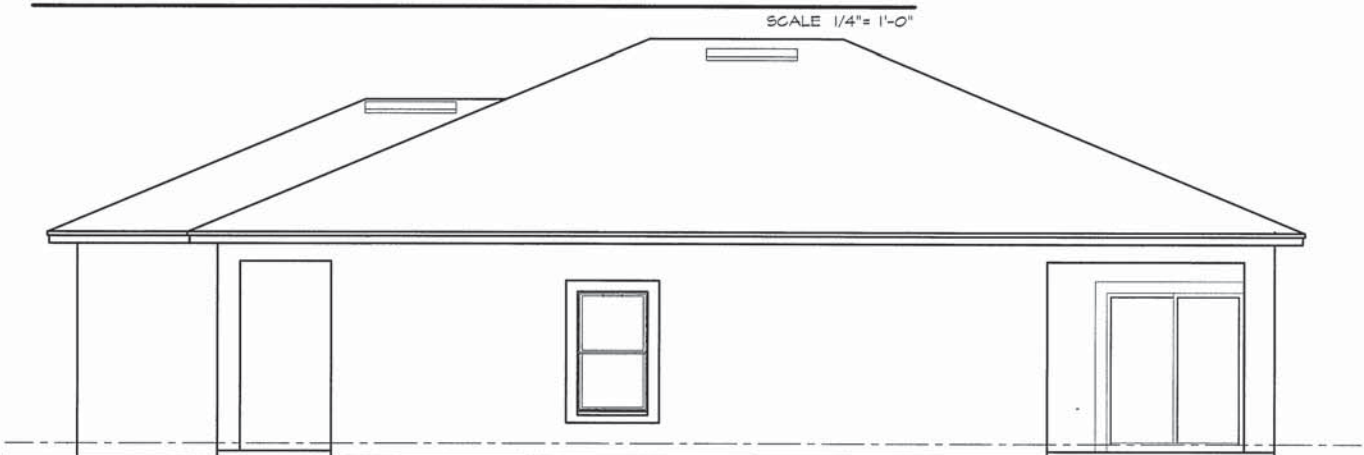
**FRONT ELEVATION**

6" BAND (TYP)  
CEMENTITIOUS DECORATIVE COATING (TYP)



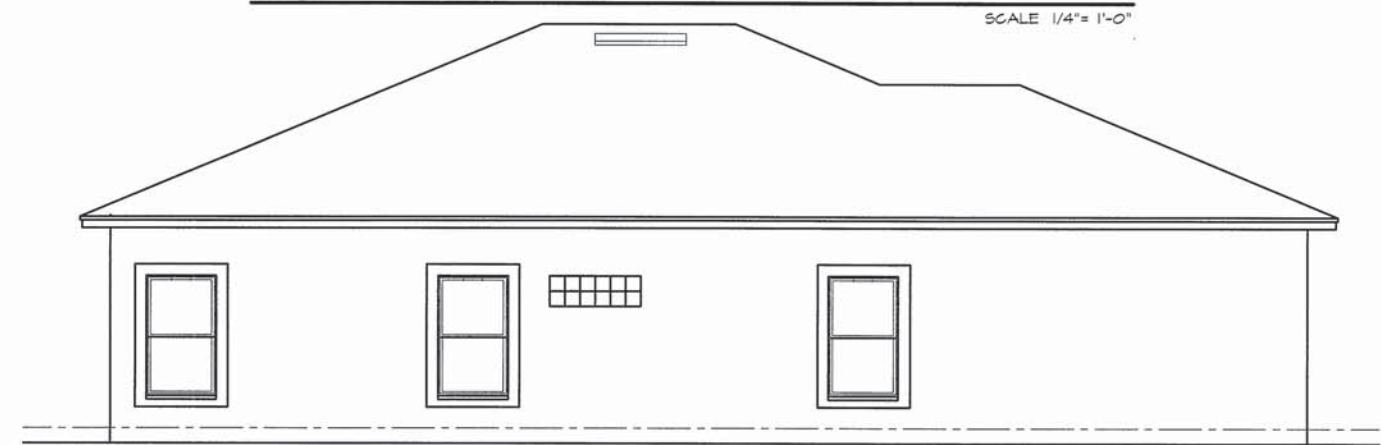
**REAR ELEVATION**

SCALE: 1/4" = 1'-0"



**RIGHT ELEVATION**

SCALE 1/4" = 1'-0"



**LEFT ELEVATION**

SCALE 1/4" = 1'-0"

SCALE 1/4" = 1'-0"