

Light *of* Life

JANUARY 2022

OUR STAFF

Pastor

Interim Administrative Secretary

Mary TeWinkel

Maintenance Engineer

Dave Wisner

BURKE LUTHERAN CHURCH

5720 Portage Rd / Madison, WI 53718
608-244-8486 / burkelutheran@att.net
www.burkelutheran.org

ANNUAL REPORTS

DUE JANUARY 10, 2022

Please complete your annual report and turn in no later than Monday, January 10.

ANNUAL REPORT

ANNUAL MEETING

ANNUAL MEETING

SUNDAY, JANUARY 30, 2022

The Congregational Meeting is scheduled for Sunday, January 30th following the 9:00am worship service.

CALL PROCESS

The council has met with the Synod staff to begin the call process. If you are interested in serving on the call committee please let Linda Hughes know by January 10th. The call committee is limited to 6 individuals and the council will be appointing them. Committee members will need to meet numerous times to gather information to complete the Ministry Site Profile prior to receiving names for interviewing.

Cemetery Association Annual Meeting

The Cemetery Association will have it's Annual Meeting on Sunday, January 9 following the worship service. Hope you will be able to join us.

2021 STATEMENTS

In mid-January you will be receiving your giving statement for tax purposes. If you receive the newsletter via email your statement will be emailed to you; all others will be mailed. Please review the statement and if you feel there is an error contact the church office to report it.



GIVING ENVELOPES

2022 ENVELOPES

The giving envelopes for 2022 will be available for pickup soon. They will be found on the table in the Narthex. Please help us get these distributed to your families. If you cannot find yours please see Linda Hughes or contact the church office to report it.

CHILI COOKOFF & TALENT SHOW

SUNDAY, FEBRUARY 20



Do you think you make the greatest chili in the world? Here is your chance to share and see if you can get your name on Burke's Chili Trophy. Starting at 4:00pm,

we'll kick off the talent show in the sanctuary. Then the party will move to the fellowship hall, where we'll sample the chili entries, along with hotdogs and dessert. Sign up sheets for talent and chili entries are in the Narthex. Warm up your February with our annual Chili Cookoff and Talent Show!

Please note that should covid numbers keep rising and public orders change we may have to cancel this event.



SUNDAY FEBRUARY 20, 4:00PM

Along with our great Chili Cookoff we are again planning our talent Show! So, Do you have a hidden talent you'd like to share? In the past we have had an Elvis impersonator, and singing and dancing penguins. Are you a magician, a dancer, a juggler, do you play an instrument or sing? Can you tell a good joke? We would love to have you share your talent! All ages are welcome. A sign up sheet will be in the narthex.



COUNCIL & BOARD ELECTIONS

There are numerous open positions for the church council and boards. Normally all positions are for a 2 year term. Due to covid and the disruption of our election cycle we have openings for some one year terms. If you are willing to serve please let Jan Peterson know, 608-837-8903.

Positions open include:

Council President-leads monthly council meetings, enforces Constitution and by-laws, serves as representative to Church Endowment Fund. General oversight of the life and work of congregation.

Council Secretary-takes minutes at all council meetings and congregational meetings.

Teach Board-involved in planning Sunday School and identifying teachers, plan and promote other educational events.

Reach Board-provide opportunities to reach out to new members as well as those unable to attend. Coordinate Time and Talent information, plan and recommend outreach efforts addressing social needs.

Preach Board-meets monthly to plan Sunday worship including hymn selection, assigns worship leaders, maintain supplies for worship such as communion wine and bread, baptismal napkins, etc.

Property Board-deals with property issues, lawn mowing and snow removal contracts, on going inspection for needed repairs and maintenance of church facilities, does annual inventory of church property, set up work days as needed.

Nominating Committee-helps to recruit individuals to serve in various leadership roles.

Audit Committee-audits church financial records including Endowment Fund, BLCW and Cemetery funds. 3 year term

MEN'S BREAKFAST

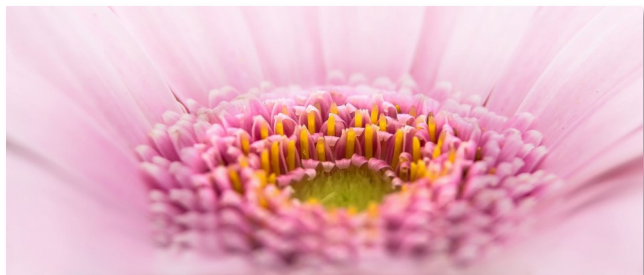


The Men's Breakfast group will meet Wednesday, January 12th, 9:00am, at Gus' Diner in Sun Prairie. Please contact Dave Weinberger at 608-225-0588 or Roger Kittleson

at 608-843-9895 if you'd like to attend.

DO WE HAVE YOUR CURRENT CONTACT INFORMATION?

If you've changed your contact information in the past few years — if you've moved, dropped your land line, changed your email to get rid of all that annoying spam you were getting, got a new job, etc. — please let the church office know at 608-244-8486 or burkelutheran@att.net. Thank you for helping us stay in touch!



BIRTHDAY LUNCHEON

WEDNESDAY, JANUARY 12, NOON

The ladies' luncheon will meet on Wednesday, January 12th. Our January restaurant is Outback Steakhouse, 4520.E Towne Blvd, Madison.

UNDECORATING

WEDNESDAY, JANUARY 5TH



If you are ready, willing and able to help take down our wonderful holiday decorations, please stop in on Wednesday January 5, from 9am—noon.

INCLEMENT WEATHER & WINTER PARKING

The winter season is here, and with it, lots of ice and snow. Snow is usually easily identified but unfortunately ice often goes unseen until it is too late. In order to keep our members safe we wish to remind everyone to please keep the loading and unloading areas as clear as possible to allow for drop offs, to reserve our limited handicapped spaces for those most in need, and to let us know immediately if you find ice anywhere where people may be walking. To find out if church services are cancelled due to inclement weather, you may call the church office at 244-8486. Thank you, and God's peace be upon all that you do.



LIGHT OF LIFE & SUNDAY BULLETIN ARTICLES

If you have news you'd like to see in the Sunday bulletin announcements and/or Light of Life newsletter:

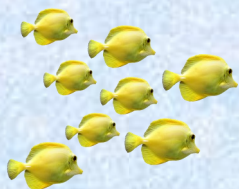
1. Email your submissions to burkelutheran@att.net (please indicate in the subject line whether it is for the bulletin, LOL or both), or
2. Mail to church, 5720 Portage Rd, Madison, WI 53718, or 3. Turn it into the church office

BULLETIN DEADLINE: Noon on Wednesdays

LIGHT OF LIFE DEADLINE: 15th of the month

SUNDAY SCHOOL

January 9 Classes Resume-See you soon!!!



NEW MEMBER WELCOME

We welcomed four new members to the Burke family on December 5 of last year. We look forward to getting to know Cindy Dahm, Carolyn Lyle, and Christine & Donald Grefe.

FOOD PANTRY

Our food pantry focus for January will be Meals in a Can. Items such as soups, stews, chili, canned meat (tuna, chicken) canned vegetables, canned fruit, etc. Please place non-perishable donations in the basket labeled "Food Pantry" found in the narthex.



PRAYER CONCERNS

During the month of December, we have remembered the following individuals in our Sunday prayers:

- Helen Knuteson Lisa Thompson Virginia Steward
- Lucy Wisner Nancy Bartlett Shelby Branzanti
- Allison Foss Val Sandmire Beni Hupf
- Karen Bork Errol Ramsfield Chris McFarlin
- Mark Gehrke Phyllis Svoboda Paul White
- Marie McCoy
- Family and friends of Dilver Bible
- Family and friends of Bev Lowe
- Family and friends of Margaret Bearden

We apologize if we have missed anyone, it was not intentional

ADMINISTRATIVE SECRETARY NEEDED

The church office is in need of an Administrative Secretary. The position is about 15 hours a week, working Monday-Thursday mornings.

Responsibilities include preparing the weekly worship bulletin and monthly newsletter, maintaining church membership data, updating the church website, uploading weekly services, etc. Contact the church office for a more detailed description.

If you are interested or know someone who might be, please have them contact the church office at 608-244-8486

THANK YOU

Burke Lutheran Church raised \$1,655 in donations for Madison Area Care of the Homeless (MACH) One-Health in December. MACH One

Health is assisting the residents of Reindahl Park with

JANUARY CALENDAR

Sun	Mon	Tue	Wed	Thu	Fri	Sat
						1 New Year's Day
2 Worship, 9am Coffee Hour	3	4	5 Quilting, 9:00am Undecorating, 9:00am Confirmation Class, 7pm	6 Epiphany	7	8
9 Worship, 9am Sunday School, 9am Coffee Hour Choir, 10:30am	10	11 Council Meeting, 6:30pm	12 Men's Breakfast, 9:00am Quilting, 9:00am Birthday Luncheon, 12pm Confirmation Class, 7pm	13	14	15
16 Worship, 9am Sunday School, 9am Coffee Hour Choir, 10:30am	17	18 Foundation, 7pm	19 Quilting, 9:00am Confirmation Class, 7pm	20	21	22
23 Worship, 9am Sunday School, 9am Coffee Hour Choir, 10:30am	24	25	26 Quilting, 9:00am Confirmation Class, 7pm	27	28	29
30 Worship, 9am Sunday School, 9am Coffee Hour Choir, 10:30am	31					

Save the Dates: February 20-Chili Cookoff and Talent Show



Happy Birthday!

- | | | | |
|--------|-------------------|--------|---------------|
| Jan 3 | Linda Peterson | Jan 18 | Libby Brown |
| Jan 4 | Julie Clark | Jan 19 | Judy Martin |
| Jan 5 | Gary Brown | Jan 21 | Jamie Truitt |
| Jan 7 | Charley Hanson | Jan 22 | Janeen Otis |
| Jan 9 | Hunter Hanson | Jan 24 | Emory Lietz |
| Jan 12 | James Ekern | Jan 27 | Randy Showers |
| Jan 15 | Mariah Lenzendorf | Jan 29 | Bob Boettcher |
| Jan 17 | Kim Hanson | Jan 30 | Mark Klang |
| | Donna Showers | | Jan Peterson |
| | | Jan 31 | Roger Martin |

Happy Anniversary!

Nancy & Darwin Thompson, January 16, 1971
Justine & Alan Mascari, January 27, 1995

We apologize if we have missed anyone, it was not intentional.



ONLINE WORSHIP SERVICE

For those who like to watch the worship service on-line each week we wanted to let you know that we will not be recording until an interim pastor is assigned. We hope you can join us in person for worship.



JANUARY WORSHIP LEADERS

	January 2 9:00am Service	January 9 9:00am Service	January 16 9:00am Service	January 23 9:00am Service	January 30 9:00am Service
Organist/Pianist	Gloria Lundquist	Susie Kittel Moore	Gloria Lundquist	Susie Kittel Moore	Gloria Lundquist
Music Leader	Hope McFarlin Linda Wendt	Dave Wisner Linda Truitt	Chris Grefe Dave Wisner	Dave Wisner Linda Truitt	Chris Grefe Rick Brandon
Communion Assistant	Mary TeWinkel	Gloria Lundquist	Julie Clark	Sharon Hughes	Bob Boettcher
Communion Prep	Gloria Lundquist	Mary TeWinkel	Gloria Lundquist	Mary TeWinkel	Gloria Lundquist
Reader	Linda Wendt	Tim Wachs	Bob Boettcher	Julie Clark	Cheryl Beckman
Ushers	Bob Lenzendorf	Roger Kittleson Rick Brandon	Janeen Otis Chris Otis	David Hanson Karl Patzer	
Coffee Hour				Potluck	
Counters	Gloria Lundquist	Linda Hughes Mary TeWinkel	Linda Hughes Mary TeWinkel	Sharon Hughes Jan Peterson	Linda Hughes Mary TeWinkel

EPIPHANY

THURSDAY, JANUARY 6

Traditionally Christmas is a 12-day celebration beginning on December 25th and wrapping up with the celebration of Epiphany. Epiphany commemorates when Jesus was revealed to the world with the visitation by the three magi. Through this visitation, everyone now knew that a new age had dawned upon the world.

One way to celebrate Epiphany is with a fire, symbolically tossing all things that cause you suffering into the flames so that you can begin anew, in honor of the birth of Christ.



BUTTER BRAIDS THANK YOU

Our kids sold 93 butterbraids this year! Thanks for helping us raise \$484.75—all of which goes towards Youth Events.