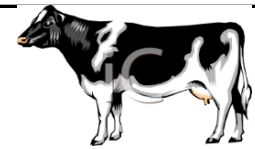


LIVESTOCK COOPERATIVE AUCTION MARKET ASSOCIATION NORTH JERSEY, INCORPORATED



225 WEST STIGER ST HACKETTSTOWN, NJ 07840

Tuesday, February 11, 2025

While Market reports reflect the majority of livestock sold, there are instances where animals do not fit reporting categories and may not be included

LIVESTOCK REPORT					
Animal		NO.	HIGH	LOW	AVG.
Bulls	lb	1	1.86	1.86	
Calfs	lb	17	7.60	0.15	4.49
Easy Cows	lb				
Cows	lb	4	1.04	0.50	0.79
Feeders	lb	4	2.50	2.35	2.39
Heifers	lb				
Steers	lb	5	1.95	1.60	1.80
Roasting Pigs	lb				
Boars	lb				
Sows	lb	5	0.50	0.39	0.41
Butcher Hogs	lb				
Ewes	lb	2	0.85	0.85	
Lambs	lb	4	1.65	1.15	1.45
Rams	lb				
Sheep	lb	4	1.35	0.72	1.00
Billy	hd	9	290	150	206
Goats	hd	7	400	230	314
Kids	hd				
Nanny	hd	1	130	130	
Wether	hd	7	290	120	226
Goat Family	hd	4	460	340	395
Lambs	hd				
Sheep Family	hd				
Roasting Pigs	hd				
Alpaca	hd	1	10	10	
TOTAL		75			

POULTRY REPORT					
Animal		No.	HIGH	LOW	AVG.
Rabbits	lb	7	2.75	1.50	2.29
Broilers	lb				
Brown Eggs		7	10.25	7.50	
Duck Eggs		3	8.00	4.00	
Quail Eggs		1	5.00	5.00	
Blue/Green Eggs					
Goose Eggs		14	5.50	5.50	
White Eggs		3	7.25	5.00	
Misc Items	hd	10	45	5	13.9
Bantam	hd	5	3	3	3
Broilers	hd				
Bunnies	hd	3	3	3	3
Call Ducks	hd				
Chicks	hd				
Chucker	hd				
Ducks	hd	12	57	18	30.5
Dove	hd				
Goose	hd				
Guinea Keets	hd				
Guinea Fowl	hd	6	19	12	13.17
Guinea Pigs	hd				
Heavy Fowl	hd	1	14	14	14
Leghorns	hd				
Peacock	hd	2	50	50	50
Pheasant	hd				
Pigeons	hd	32	11	4	5
Pullets	hd				
Quail	hd				
Rabbits	hd				
Roosters	hd	22	24	10	17
Silkie	hd	6	6	6	6
Turkeys	hd				

HAY REPORT			
TYPE OF HAY	No. loads	HIGH	LOW
Alfalfa			
Mixed	3	6.25	5.25
Orchard	2	5.50	4.75
Timothy			
Grass	21	12.00	4.00
Mulch	1	4.00	4.00
Clover			

GRAIN REPORT			
TYPE OF GRAIN	No. Bags	HIGH	LOW
Ground Corn	6	10.50	10.50
Shell Corn	6	10.00	10.00
Ear Corn			
Oat Feed			
Wheat Feed			

STRAW REPORT			
TYPE OF STRAW	No. Loads	HIGH	LOW
Oat			
Wheat			
Rye	3	3.75	3.50

MISC FARM RELATED CONSIGNMENT			
ITEM	NO.	HIGH	LOW
Firewood			
Posts			

**SALE SCHEDULE: 10am Hay 1030am Poultry 2pm
Goats, Lambs/Sheep Calves, Feeders, Hogs and
Cattle (we run straight through)**