

*Town and Country Decorative Painters  
presents its 27<sup>th</sup> Annual Retreat*

# **A Sweet Retreat**

*Life Is What You Bake It*



**April 25-28, 2024**  
Thursday through Sunday

*Painting on your own  
Monday Through Wednesday*

## Town & Country Decorative Painters 2024 Retreat,

### *A Sweet Retreat: Life Is What You Bake It*

*We are so excited about this year's retreat. What could be sweeter than a long weekend away, surrounded by people with whom you share a love of painting? We are thrilled to offer you a wide variety of classes taught by **seventeen** talented fellow artists. The hardest part of the weekend will be choosing which classes to take!*

*The accommodations are comfortable, the food is delicious, the fellowship is gratifying, and the opportunity to learn is so very rewarding. Don't forget to return your recipe card with your favorite recipe written on it and to get your apron decorated for what promises to be a most "rewarding" contest! Get ready to be "whisked away" to a wonderful weekend adventure. We look forward to seeing you there.*

*Barb Leffler & Carol Sexton, Retreat Co-chairs*

## 2024 Retreat Committee

Retreat Co-Chair	Barb Leffler/Carol Sexton
Teacher Co-Chairs	Dot Hoffman/Barb Leffler
Co-Treasurers	Jennifer Calvin/Fran Deah
Registration Co-Chairs	Jennifer Calvin/Fran Deah
Booklet	Dot Hoffman
Nametags	Karen Schnelle
Raffle Tickets/Tailgate Sale	Retreat Committee
Monitors, Large Raffle	Janine Stiffler & Deb Laney
Set-up Chair	Wendy Cornman

### **Do you want to have fun all year long? Join us! Town and Country Decorative Painters**

Our meetings for 2024 will be on February 4, April 14, June 2, August 4, October 13, and December 1 at Tanglewood in Butler, PA. You may choose from several projects that are taught at 4 meetings each year. Additionally, February is our service project month and December is a Make-It-Take-It meeting. For more information about the club, visit our website [www.townandcountrydecorativepainters.com](http://www.townandcountrydecorativepainters.com) or contact our president, Linda Lineman, at 814-671-6502, or email her at [lpmchina@gmail.com](mailto:lpmchina@gmail.com).



## Retreat Information

### Location:

Crestfield Camp and  
Conference Center  
195 Taggart Road  
Slippery Rock, PA. 16057

**Registration:** Registration is in the Hallway entrance from the parking lot at Crestfield. You can pull in the circle, unload your car, and then move your car to the parking lot.

This year we are offering extra days, Monday through Wednesday,) for people to check in and bring their paint and projects. Meals on these days will be strictly on your own, but there are places to eat nearby. We will have use of the "Spirit of the Glen" building and the Scott conference room to paint. Classes will be offered on Thursday, Friday, Saturday, and Sunday. Registration begins Wednesday at 1:00 PM. Registration opens Thursday at 7 AM and closes on Sunday at 9:30 AM. During check-in, you will receive your nametag, settle your account if need be, and sign up for seating for Sunday's banquet. You must check in prior to going into the class area. If you are staying at Crestfield, you will also receive your room key at the registration desk.



## LODGING INFORMATION

### Crestfield Camp and Conference Center

195 Taggart Road, Slippery Rock, PA. 16057

724-794-4022

[registrar@crestfieldcc.org](mailto:registrar@crestfieldcc.org)

- ◆ All accommodations are in **Scott Lodge**.
- ◆ Rooms are either 2 twin beds or 3 twin beds.
- ◆ There is free WiFi (no password needed.)
- ◆ Rooms have their own private bathroom, a small dresser, and a table with chairs.
- ◆ Everything is on one level, no stairs to climb.
- ◆ In the lodge there is a sitting room and a small conference room with tables for those night owls who find themselves awake in the wee hours and wish to paint or read and not disturb their roommates.
- ◆ Linens and towels will be provided.



Single and Double rooms are \$90 per night. A single person in a 2-bed room will pay \$90 per night. Two people would each pay \$45 per night.

Triple rooms are \$96 per night. If you have two people in a triple room, the charge would be  $\$96/2=\$48$ . If you have three people in a triple room, the charge would be  $\$96/3=\$32$  per night.

We also have Crestfield Package Deals that combine rooms and meals in a variety of ways. Information on these packages is under **Crestfield Packages** on pages 8-9 of this booklet.



**We must know with whom you are rooming.**  
**Please note that on the registration form.**

Meals are served in the dining hall in the main building, just a short walk on the covered walkway from Scott Lodge. Meals are \$12.00 each. Please add \$3 if you would like dessert with any dinner.

We will have dinner on Thursday, 3 meals on Friday and Saturday, and breakfast on Sunday for a total of 8 meals or \$96.00. However, room and meal packages are available. See pages 8 and 9.

Sunday's Banquet is included in your registration fee.

**MEALTIMES ARE:**

**7:30 A.M. Breakfast - 12:30 P.M. Lunch**  
**5:00 P.M. Dinner**

**Breakfast is Friday, Saturday, and Sunday only.**

**Coffee and light refreshments will be available in the registration/hospitality area daily. A refrigerator and microwave are available for your use.**

**Cancellations for lodging and meals must be received by March 27, 2024.**

**Registration will be in the lobby at Scott Lodge. Hospitality and classes will be held in "The Spirit of the Glen"- which is a short walk on a paved path from Scott Lodge. There will also be classes in the conference room in Scott Lodge**

**Class Registration Information**

1. You do not need to be a member of TCDP to attend the retreat.
2. You must use the form provided (or a copy) to register. Please send your registration form with a check to cover all fees to TCDP, % Fran Deah, 2284 Ferguson Road, Allison Park, PA 15101, 412-491-9978, fdeah@msn.com. PLEASE MAKE ALL CHECKS PAYABLE TO TCDP.

3. All fees are to be paid at the time of registration. **Along with your registration fee, you must include the teacher fees (4 or 6 hour class). Do not include the project fee. That is to be paid to the teacher the day of the class.**
4. Enclose a self-addressed, stamped envelope or e-mail address with your registration. Class confirmations will be returned by snail mail if a self-addressed envelope is provided, otherwise, confirmations will be emailed.
5. We are offering a one-day registration for people who can only attend one day of retreat. The one-day registration fee is \$15.00 (\$20.00 after the March 27, 2024, deadline). If you choose to attend only on Sunday and wish to stay for the banquet, please note that the registration fee remains \$40.00 to cover the cost of the banquet.
6. Only those registered for the retreat may take classes. Your multi-day registration fee includes the Sunday Banquet. Banquet tickets are non-transferable.
7. List your classes in the order of preference. You will be given your second choice only if your first choice is unavailable.
8. Refunds will be made for classes which are cancelled due to insufficient enrollment.
9. Refunds will be made to those who cancel their attendance provided a written request is made prior to March 27, 2024.
10. Additional classes may be purchased at the registration desk at the retreat, if available.
11. A late fee of \$5.00 will be charged if registering after March 27, 2024.
12. Crestfield is a smoke-free facility.
13. TCDP and/or its teachers will not be responsible for any person's allergic reaction to class materials.

14. If you are taking classes and are NOT staying at Crestfield, you will be charged a \$15 per day facility usage fee.
15. Please be sure to note dietary restrictions on the registration form.
16. Remember to bring your usual painting supplies. Brushes, palette paper, paper towels, brush cleaner, water container, etc. If your class is in oils, you must use ODORLESS TURP if needed.
17. The project fee covers a prepared surface, pattern, instructions, photograph, and paint/medium to be used in the class.
18. Please do not request a class beyond your skill level. This will cause a hardship for you, the teacher, and other students. Please be considerate of others.
19. Thanks to Karen Schnelle for painting the cover cupcake and to Dot Hoffman for the cover photo. Also thank you to creativefabrica.com and clip-artlibrary.com for the clipart.
20. All due diligence was exercised in obtaining permission to teach designs offered in classes.

For questions regarding registration information, contact Fran Deah, 412-491-9978, or email her at [fdeah@msn.com](mailto:fdeah@msn.com) .

For questions regarding the retreat, contact Barb Leffler at 724-816-9336, or email her at [bleffler18@gmail.com](mailto:bleffler18@gmail.com). or Carol Sexton, 724-290-8912, [casexton@zoominternet.net](mailto:casexton@zoominternet.net).



## Crestfield Packages

Crestfield has been kind enough to offer us packages that combine rooms and food at a discount. There are several options. You just have to decide:

- ◆ how many nights are you staying?
- ◆ how many people will be in your room?
- ◆ how many (and which) meals will you be eating?

### SUNDAY LUNCH IS INCLUDED WITH YOUR REGISTRATION



### Crestfield Packages Per Person

TWO NIGHTS	SINGLE	DOUBLE	TRIPLE
3 MEALS	\$216	\$126	\$100
4 MEALS	\$228	\$138	\$112
5 MEALS	\$240	\$150	\$124
6 MEALS	\$252	\$162	\$136

THREE NIGHTS	SINGLE	DOUBLE	TRIPLE
4 MEALS	\$268	\$168	\$143
5 MEALS	\$280	\$180	\$155
6 MEALS	\$292	\$192	\$167
7 MEALS	\$304	\$204	\$179
8 MEALS	\$316	\$216	\$191



FOUR NIGHTS	SINGLE	DOUBLE	TRIPLE
5 MEALS	\$330	\$205	\$170
6 MEALS	\$342	\$217	\$182
7 MEALS	\$354	\$229	\$194
8 MEALS	\$366	\$241	\$206

If you have some other combinations that you want, they are NOT part of these package deals and will be priced per day on the rooms and \$12 per meal (\$15 for dinner with dessert.)



Join Us in  
Some Retreat Fun!

### Recipe cards

You should have received a recipe card in your retreat booklet. We ask that you write your favorite recipe on it and return it with your registration, or bring it with you to the retreat. If you did not get a recipe card, or used our web site for your registration form, please use one of your own cards for your recipe. We are planning a surprise for the banquet.

### Apron Contest

We will be having an apron contest during our retreat weekend. Plan to enter your favorite handmade or hand painted apron. Everyone will get one vote for their favorite with the winner being announced at the banquet. The winner gets a really nice prize. Get your thinking caps on now!

### Tailgate Sale

There will be a tailgate sale in the room starting Thursday morning. Come and sell your extra supplies and pick up some bargains!

**Raffle Items:** Each teacher has graciously donated an item created by them and offered as a raffle item. We will also have a 50/50 raffle each day. All tickets will be available for purchase at the Registration desk.

**Class Times:** The 6-hour classes have a 90-minute dinner break.

The 4-hour classes do not have a break.

**Pizza Party Lunch on Thursday:** A complimentary pizza lunch will be held for anyone who is at the retreat on Thursday at 12:30 PM.

**Sunday Banquet:** After a weekend of painting, join us for the closing banquet at 1:00 PM on Sunday. Luncheon will be served at 1:30, and the prize drawings will take place immediately after.



## BONUS

Bring a “new” friend and you will each receive a surprise. Registered “new” friends must not have attended our retreat last year. You must also mention your registered friend at check-in to receive your surprise.

Remember- all skill levels are welcome.

## Thursday 6-Hour Classes 1:30-4:30 and 6:00-9:00

### Yard Art

Teacher: Rosann Wagner

Medium: Acrylic

Level: Beginner/Intermediate 6 Hour Class

Surface: Wood

Surface Size: 20" x 15" x 1/2"

Special Supplies: Regular supplies

Project Cost: \$25



### Petunias

Teacher: Mary Ann Yurus

Medium: Acrylic

Level: Intermediate 6 Hour Class

Surface: Fabric Banner

Surface Size: 14" x 15"

Special Supplies: Firm bristle brushes and regular supplies

Project Cost: \$20, includes rod, ends, and cord

### Pond Life

Teacher: Janine Stiffler

Medium: Colored Pencil

Level: Intermediate 6 Hour Class

Surface: Stonehenge paper

Surface Size: 8" x 10"

Special Supplies: Exacto knife, pencil sharpener, kneaded eraser

Project Cost: \$18, includes mat



## Thursday 6-Hour Classes 1:30-4:30 and 6:00-9:00



### Pintail Decoy

Teacher: Carol Hoffman

Medium: Water-mixable oils

Level: Intermediate 6 Hour Class

Surface: Canvas

Surface Size: 11" x 14"

Special Supplies: Flats– synthetic  
10-8-6-4, #3 round, liner, mop

Project Cost: \$25

### Hummers & Glitter Fantasy Flowers

Teacher: Linda Lineman

Medium: Acrylic

Level: Intermediate 6 Hour Class

Surface: Roclon

Surface Size: 18" x 9"

Special Supplies: Regular supplies

Project Cost: \$20



## Friday 4-Hour Classes 8:00 AM—12:00 PM



### Aspen Landscape

Teacher: Gail Bodkin

Medium: Watercolor

Level: Beginner/Intermediate 4 Hour  
Class

Surface: 130# watercolor paper

Surface Size: 11" x 14"

Special Supplies: 1" wash brush, #8  
flat shader, #6 round

Project Cost: \$18

## Friday 4-Hour Classes 8:00 AM—12:00 PM

### Monochromatic Rose Study

Teacher: Rosemary Habers

Medium: Acrylic

Level: Beginner/Intermediate 4 Hour Class

Surface: Wood

Surface Size: 20" x 15" x 1/2"

Special Supplies: Regular supplies

Project Cost: \$25



### Personalized Apple Basket



Teacher: Janine Stiffler

Medium: Acrylic

Level: Beginner/Intermediate 4 Hour Class

Surface: MDF

Surface Size: 8" x 12"

Special Supplies: Small rounds

Project Cost: \$16

### World's Best Baker

Teacher: Dot Hoffman

Medium: Acrylic

Level: Beginner 4 Hour Class

Surface: Wood/rolling pin

Surface Size: 17" x 6.5"

Special Supplies: Regular supplies

Project Cost: \$15



## Friday 4-Hour Classes 8:00 AM—12:00 PM

### Alpaca Affection-Part 1



Teacher: Monica Shellenberger

Medium: Colored Pencil

Level: Beginner 4 Hour Class

Surface: Suede board

Surface Size: 11" x 14"

Special Supplies: Electric pencil sharpener

Project Cost: \$25

Designed by Tina Sue Norris

NOTE: Alpaca Affection is an 8-hour class. You MUST sign up for both part 1 (Thursday) and part 2 (Friday.) The cost would be the same as two 4-hour classes.

## Friday 6-Hour Classes 1:30-4:30 and 6:00-9:00 PM

### Pick Your Own

Teacher: Elaine Walker

Medium: Watercolor

Level: Intermediate/Advanced 6 Hour Class

Surface: Watercolor paper

Surface Size: 8" x 10"

Special Supplies: Regular watercolor supplies, tracing paper, stylus

Project Cost: \$25



## Friday 6- Hour Classes 1:30-4:30 and 6:00-9:00 PM

### 4 Crocks

Teacher: Lynne Banting

Medium: Oil

Level: Beginner/Intermediate/  
Advanced 6 Hour Class

Surface: Artist' panel

Surface Size: 8" x 8"

Special Supplies: #2, #4 sable flats,  
liner, mop



### Daisies

Teacher: Laura Angelo

Medium: Acrylic

Level: Beginner/Intermediate/  
Advanced 6 Hour Class

Surface: Wood Plaque

Surface Size: 11" x 14"

Special Supplies: Regular supplies

Project Cost: \$15

Designed by Chris Haughey

### Choose to Shine

Teacher: Viki Sherman

Medium: Acrylic

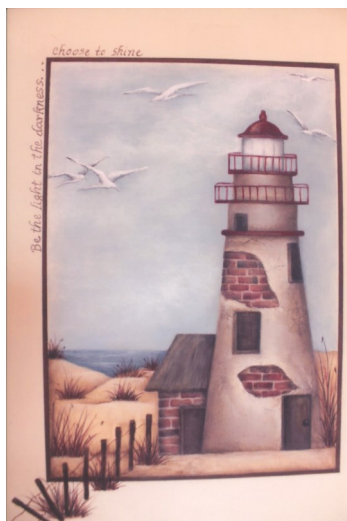
Level: Intermediate 6 Hour Class

Surface: Wood panel

Surface Size: 11" x 14"

Special Supplies: 1/2" flat, #2 flat, old  
stencil brush, palette knife, Pigma Micron  
#5 brown pen, painter's tape, ruler

Project Cost: \$25



## Friday 6- Hour Classes 1:30-4:30 and 6:00-9:00 PM



### The Pond

Teacher: Fran Deah

Medium: Acrylic

Level: Beginner/Intermediate 6 Hour Class

Surface: Slate

Surface Size: 14" x 22"

Special Supplies: 1" flat brush, Regular supplies

Project Cost: \$10

Designed by Lin Wellford

## Saturday 4- Hour Classes 8:00 AM—12:00 PM

### Girl with Green Parasol

Teacher: Carol Hoffman

Medium: Water-mixable oils

Level: Beginner 4 Hour Class

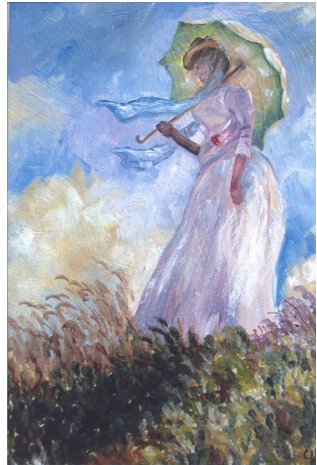
Surface: Masonite

Surface Size: 11" x 14"

Special Supplies: #4-6 filberts, Bristle-10-6 synthetic, liner

Project Cost: \$25

Designed by Monet, Impressionism style



### Gourd Lamp

Teacher: Jeannie Delbusso

Medium: Acrylic

Level: Beginner/Intermediate 4 Hour Class

Surface: Gourd

Surface Size: 20" x 15" x 1/2"

Special Supplies: Pounce brush, Regular supplies

Project Cost: \$25 includes prepared gourd with pattern on it, lights and a quart size mason jar



## Saturday 4-Hour Classes 8:00 AM—12:00 PM

### Squirrely

Teacher: Linda Lineman

Medium: Acrylic

Level: Beginner/Intermediate 4 Hour Class

Surface: Wood

Surface Size: 20" x 15" x 1/2"

Special Supplies: Regular supplies

Project Cost: \$25



### Cedar Waxwing

Teacher: Janine Stiffler

Medium: Colored pencil

Level: Beginner/Intermediate 4 Hour Class

Surface: Suede board

Surface Size: 8" x 10"

Special Supplies: Pencil sharpener, kneaded eraser, #2 pencil

Project Cost: \$18 includes mat

### Alpaca Affection-Part 2

Teacher: Monica Shellenberger

Medium: Colored Pencil

Level: Beginner 4 Hour Class

Surface: Suede board

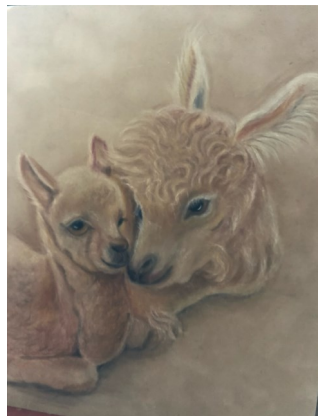
Surface Size: 11" x 14"

Special Supplies: Electric pencil sharpener

Project Cost: \$25

Designed by Tina Sue Norris

NOTE: This is an 8-hr class. You MUST sign up for both part 1 (Thursday) and part 2 (Friday.)



## Saturday 6- Hour Classes 1:30-4:30 and 6:00-9:00



### Horseshoe Point Pelican

Teacher: Karen Schnelle

Medium: Acrylic

Level: Beginner/Intermediate 6 Hour Class

Surface: Wrapped canvas

Surface Size: 8" x 10"

Special Supplies: 1/4" rake or comb brush, regular supplies

Project Cost: \$18

### Muffin Basket

Teacher: Carol Sexton & Wendy Cornman

Medium: Reed/acrylic

Level: Beginner 6Hour Class

Surface: Bamboo, reed

Surface Size: 6" x 8" x 3" basket with lid

Special Supplies: Spray water bottle, bath towel, regular supplies

Project Cost: \$20



### Chocolates

Teacher: Rosemary Habers

Medium: Acrylic

Level: Intermediate/advanced 4 Hour Class

Surface: paper mache box

Surface Size: 12" x 12"

Special Supplies: Regular supplies

Project Cost: \$18

## Water Lily

Teacher: Gail Bodkin

Medium: Watercolor

Level: Intermediate/Advanced 6 Hour Class

Surface: 130# Arches paper

Surface Size: 11" x 14"

Special Supplies: #6 round, #1 liner, wash brush

Project Cost: \$20



## Winter Girl— Facial Study

Teacher: Lynne Banting

Medium: Oil

Level: Intermediate 6 Hour Class

Surface: Prepared masonite

Surface Size: 8" x 10"

Special Supplies: #2, 4 sable oil brushes, paper towels, liner

Project Cost: \$19

Sunday 4-Hour Classes 8:00 AM—12:00 PM

## Milk Tin

Teacher: Elaine Walker

Medium: Soft pastel

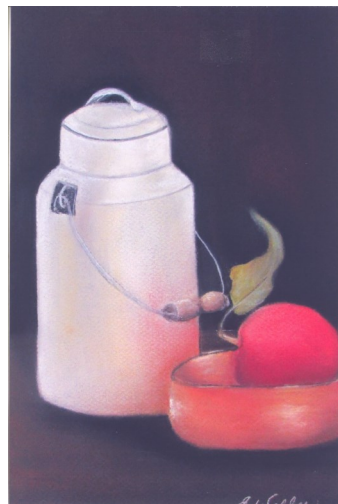
Level: Beginner/Intermediate 4 Hour Class

Surface: Pastel paper

Surface Size: 9" x 12"

Special Supplies: #4 flat brush, baby wipes, paper towels

Project Cost: \$24



## Sunday 4-Hour Classes 8:00 AM—12:00 PM



### Triad Sampler

Teacher: Lynne Banting

Medium: Oil

Level: Beginner/Intermediate /  
Advanced 4 Hour Class

Surface: Baltic birch

Surface Size: 6" x 13"

Special Supplies: #2, #4 sable flats,  
liner

Project Cost: \$24, included frame

### Lake Cottage

Teacher: Carol Hoffman

Medium: Water-mixable oils

Level: Beginner 4 Hour Class

Surface: Canvas

Surface Size: 11" x 14"

Special Supplies: 8 round bristle, 8  
flat bristle, #10-6-4 synthetic flats,  
liner, mop

Project Cost: \$25



## Sunday 4-Hour Classes 8:00 AM—12:00 PM

### The "BOO" Plate Special

Teacher: Viki Sherman

Medium: Acrylic

Level: Beginner 4 Hour Class

Surface: Charger plate

Surface Size: 10 1/2" diameter

Special Supplies: Stencil brushes,  
Good shader, palette knife, regular  
supplies

Project Cost: \$10, includes a Creative  
Coach stencil for lettering



### Southern Beauty

Teacher: Rosann Wagner

Medium: Acrylic

Level: Beginner/Intermediate 4 Hour  
Class

Surface: Wood box

Surface Size: 6.5" x 5" x 3"

Special Supplies: Good dry brush,  
regular supplies

Project Cost: \$25

To see larger photos with more detail, visit our website  
and browse our book online (pdf file).

[www.townandcountrydecorativepainters.com](http://www.townandcountrydecorativepainters.com)

Extra registration forms are available online...  
Invite a friend

THURSDAY 8-12	FRIDAY 8-12	SATURDAY 8-12	SUNDAY 8-12
	<i>Aspen Landscape</i> Gail Bodkin	<i>Girl with Green</i> Parasol Carol Hoffman	<i>Milk Tin</i> Elaine Walker
	<i>Monochromatic Rose Study</i> Rosemary Habers	<i>Gourd Lamp</i> Jeannie Delbusso	<i>Triad Sampler</i> Lynne Banting
	<i>Personalized Apple Basket</i> Janine Stiffler	<i>Squirrely</i> Linda Lineman	<i>Lake Cottage</i> Carol Hoffman
	<i>World's Best Baker</i> Dot Hoffman	<i>Cedar Waxwing</i> Janine Stiffler	<i>The "BOO" Plate Special</i> Viki Sherman
	<i>Alpaca Affection Part 1</i> Monica Schellen- berger	<i>Alpaca Affection Part 2</i> Monica Schellen- berger	<i>Southern Beauty</i> Rosann Wagner

Thursday	Friday	Saturday	Sunday
1:30-9:00 PM	1:30-9:00 PM	1:30-9:00 PM	1:30-9:00 PM
<i>Yard Art</i> Rosann Wagner	<i>Pick Your Own</i> Elaine Walker	<i>Harshoe Point Pelican</i> Karen Schnelle	
<i>Petunias</i> Mary Ann Yurus	<i>4 Crocks</i> Lynne Banting	<i>Muffin Basket</i> Wendy Cornman/ Carol Sexton	
<i>Pond Life</i> Janine Stiffler	<i>Daisies</i> Laura Angelo	<i>Chocolates</i> Rosemary Habers	
<i>Pintail Decoy</i> Carol Hoffman	<i>Choose to Shine</i> Viki Sherman	<i>Water Lily</i> Gail Bodkin	
<i>Hummers &amp; Glitter Flowers</i> Linda Lineman	<i>The Pond</i> Fran Deah	<i>Winter Girl, Facial Study</i> Lynne Banting	



Fran Deah

2284 Ferguson Road

Allison Park, PA 15101