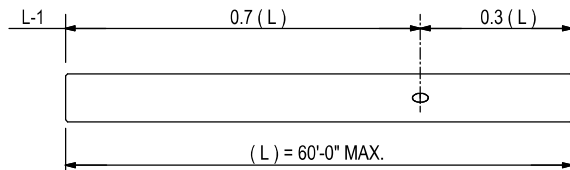
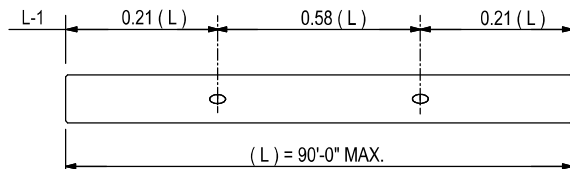


ELEVATION

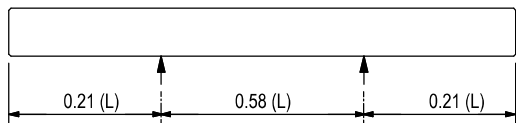


ONE POINT PICK-UP

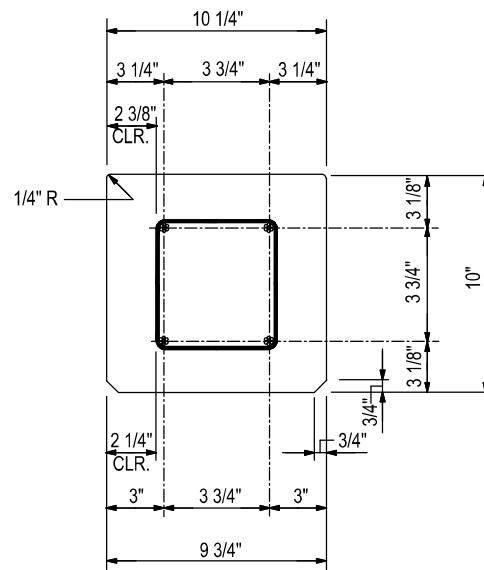


TWO POINT PICK-UP

PICK-UP POINT DIAGRAMS



STORAGE/SHIPPING POINTS



TYPICAL SECTION

CAST IN ITEMS

MK. NO.	QTY.	DESCRIPTION
L1	2	1/2" STRAND LIFTING HOOKS

SECTION PROPERTIES

AREA (SQ IN)	WT. (LB/LF)	PERIM. (FT)
98.9	101	3.33

MAX. ALLOWABLE SERV. LOAD (COMP.) = 89 TON  
(BASED ON  $f_{pc} = 700$  psi)

MOMENT OF INERTIA (IN<sup>4</sup>) = 808

GENERAL NOTES

- 1) CONCRETE STRENGTH = 6000 PSI @ 28 DAYS
- 2) 1/2" DIA. STRAND TO HAVE A MINIMUM ULTIMATE STRENGTH OF 270 KSI AS PER ASTM A416 (A = 0.153 SQ. IN.)
- 3) SPIRAL WIRE TO BE W3.4 (5 GAUGE) COLD DRAWN WIRE
- 4) STRAND TO BE CUT OFF FLUSH WITH PILE ENDS.
- 5) TENSION PER STRAND = 23.0 K
- 6) TRANSFER OF PRESTRESS FORCE @ 3500 PSI CONCRETE STRENGTH.
- 7) HANDLING LENGTHS BASED ON INCLUDING 50% IMPACT FACTOR & MAX. TENSILE FORCE =  $6\sqrt{3500}$
- 8) LIFTING HOOKS ARE FOR MFG. PROCESS ONLY. THEY ARE NOT TO BE USED TO BRING THE PILE UNDER THE HAMMER
- 9) EXACT PILE CAPACITY SHOULD BE DETERMINED BY A PROFESSIONAL GEOTECHNICAL ENGINEER
- 10) PROPER DESIGN & DETAILING OF TENSION OR MOMENT CONNECTION TO PILE IF REQUIRED, IS THE RESPONSIBILITY OF THE ENGINEER OF RECORD.

Prepared By: **RJW Consulting International, Inc.**  
2518 Catalina Dr., Orlando, FL 32805  
(407) 493-7573

Prepared for:  
**HENDERSON PRESTRESSED CONCRETE, INC.**  
822 ANCLOTE RD.  
TARPON SPRINGS, FL 34689  
(727) 938-2828  
hendersonprestressedconcrete.com

DRAWN: RJW ISSUE (PRELIM.): 08/29/18

CHECKED: ISSUE (PRODUCTION):

Project:

10" 4W IBC PILE

REV.	DATE	DESCRIPTION	MARK NO.

REVISIONS

NOTE: THIS DRAWING IS THE PROPERTY OF HENDERSON PRESTRESSED CONCRETE, INC. (HPC) AND SHALL NOT BE REPRODUCED BY ANY MEANS WITHOUT THE EXPRESSED WRITTEN CONSENT OF HPC.

DWG. NO.