

LABEL	BEARING	DISTANCE
T1	S 71° 12' 41" E	128.37'
T2	N 71° 12' 41" W	128.37'
T3	S 69° 01' 00" W	35.85'
T4	N 69° 01' 00" E	40.14'
T5	N 63° 00' 00" E	146.98'
T6	S 63° 00' 00" W	146.98'
T7	N 60° 04' 23" E	37.97'

# GAS WELL POOLS

## CURVE TABLE

LABEL	RADIUS	CEN. ANGLE	ARC	TAN
C1	50.00'	88° 14' 41"	75.26'	46.63'
C2	110.00'	86° 14' 41"	165.58'	103.02'
C3	287.15'	35° 57' 41"	180.23'	93.20'
C4	250.00'	40° 00' 00"	174.53'	90.98'
C5	310.00'	40° 00' 00"	216.42'	112.83'
C6	207.15'	35° 57' 41"	142.57'	72.73'
C7	310.26'	40° 00' 00"	175.70'	126.55'
C8	226.57'	48° 48' 19"	123.87'	100.71'
C9	286.57'	48° 48' 19"	243.24'	128.51'
C10	250.36'	45° 00' 00"	196.63'	103.70'
C11	310.00'	80° 00' 00"	486.95'	310.00'
C12	250.00'	80° 00' 00"	392.70'	250.00'
C13	195.79'	89° 43' 00"	308.58'	194.62'
C14	255.79'	89° 43' 00"	400.63'	254.93'
C15	120.00'	50° 00' 00"	120.00'	87.94'
C16	180.00'	50° 00' 00"	180.00'	129.91'
C17	180.00'	78° 25' 48"	240.11'	141.72'
C18	120.00'	78° 25' 48"	120.00'	84.48'

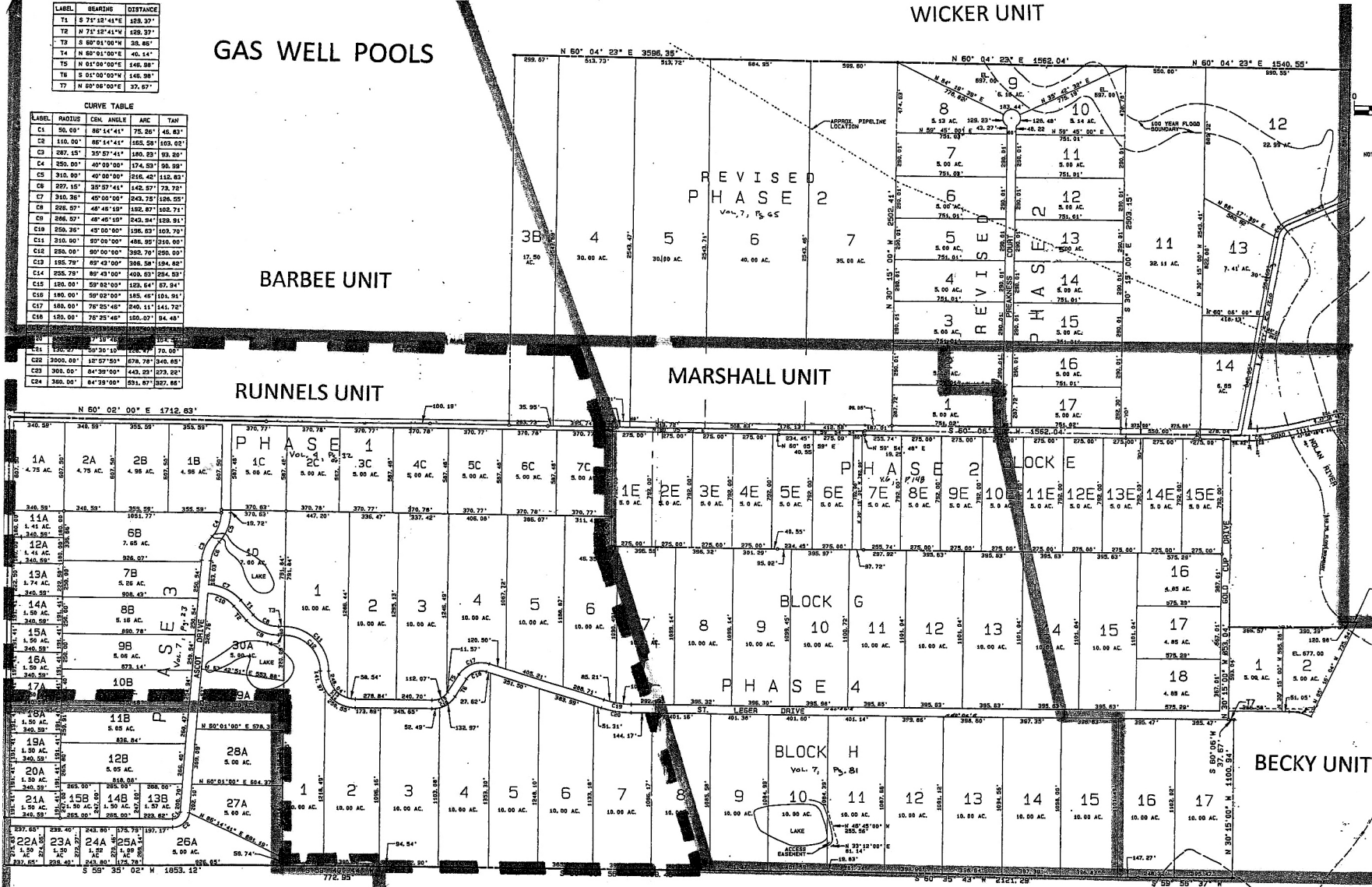
LABEL	BEARING	DISTANCE
T1	S 71° 12' 41" E	128.37'
T2	N 71° 12' 41" W	128.37'
T3	S 69° 01' 00" W	35.85'
T4	N 69° 01' 00" E	40.14'
T5	N 63° 00' 00" E	146.98'
T6	S 63° 00' 00" W	146.98'
T7	N 60° 04' 23" E	37.97'

# BARBEE UNIT

# RUNNELS UNIT

# MARSHALL UNIT

# WICKER UNIT



PREPARED BY:  
**BARNETT ENGINEERING**  
 CONSULTING ENGINEERS-PLANNERS-DESIGN  
 P.O. BOX 1485 MINERAL WELLS, TEXAS  
**NEAVES UNIT**  
 817/925-8417

# NOLAN RIVER ESTATES

# BECKY UNIT