

**Keep doing the  
things you love.**

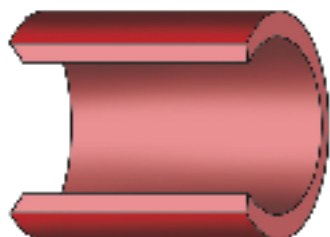
**Catch health problems before they go too far.**

Life Line Screening offers a 4-screening package to provide peace of mind or early detection for risks of stroke and cardiovascular disease.

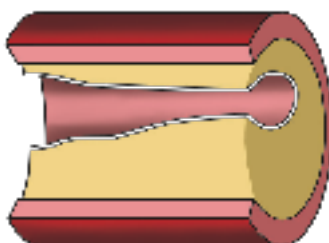
The combination of these tests helps detect problems—**before you have symptoms** and while you and your doctor can still take action...so you can keep doing the things you love.



**Plaque buildup can lead to cardiovascular disease, stroke and aneurysms.**



A normal artery allows blood to flow through easily.



Plaque buildup in the arteries reduces your blood flow and can be dangerous if left untreated.

**Register now to check the health of your arteries**

**4 Important Screenings  
for Only \$149  
(Special Package Pricing)**

- Carotid Artery Disease
- Peripheral Arterial Disease (PAD)
- Abdominal Aortic Aneurysm (AAA)
- Atrial Fibrillation (AFib)

**Join the 10 million people who have been screened.  
We are coming to your neighborhood.**

**When : January 8<sup>th</sup>, 2024**

**Where: Rinn United Methodist Church**

To register for your appointment and to receive the special discount,  
please call toll-free **877-792-8479** or visit [LLSA.SOCIAL/HC](https://llsa.social/hc)

**Scan here**



Screening results are provided to you in about 14 days. We direct all participants with abnormal results to take the report to their physician. Appropriate modification of risk factors (including high blood pressure, smoking, heart disease, diabetes and poor diet) is also necessary for cardiovascular disease prevention. Our screenings cannot detect all forms of stroke risk or cardiovascular disease. All tests are for screening purposes only. You should consult with your personal physician regarding your screening results. Price does not include any applicable review fees. Insurance Note: Life Line Screening does not participate in the Medicare program and the cost of our screening services is not covered or reimbursable by Medicare. Life Line Screening does not file insurance claims nor provide referrals to any physician's group or hospital. If you are unable to attend the screening for any reason whatsoever, we will issue a gift card for the full amount to be used by you, or anyone you choose, for future screening services.