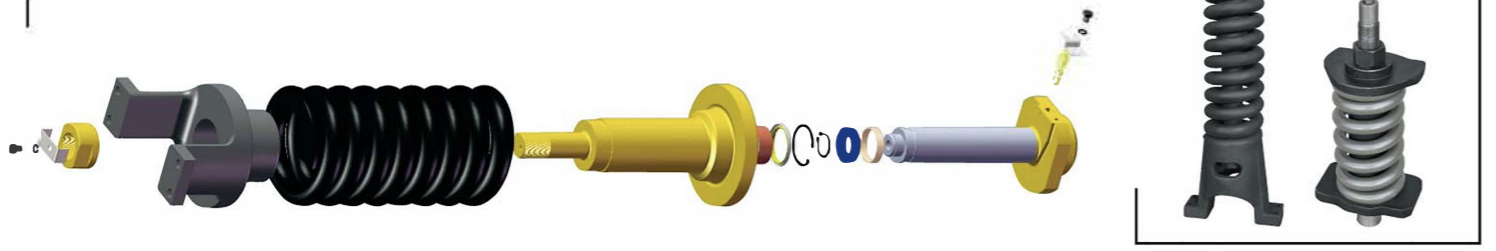
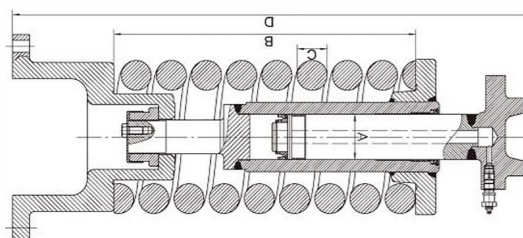


Track Adjuster Assy

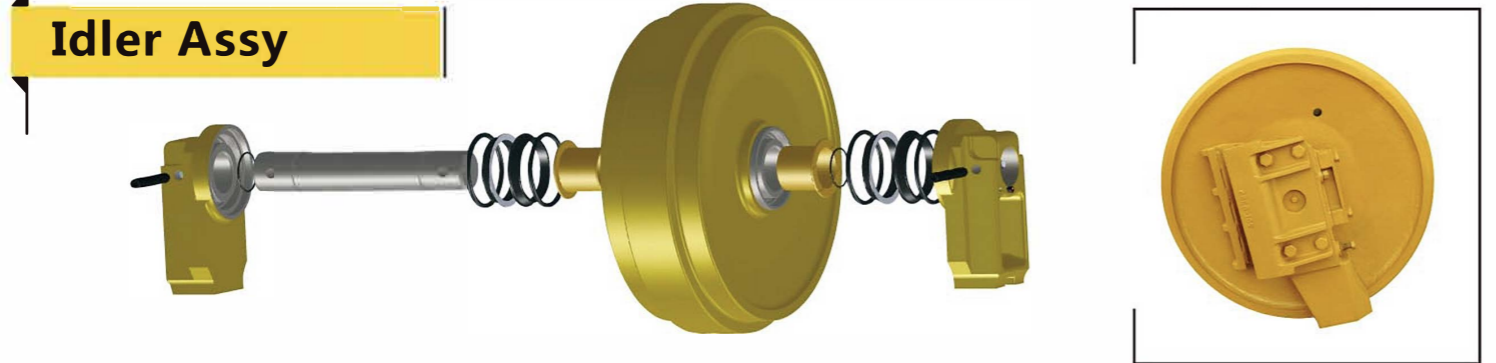


Track Adjuster Assy Ref. Tech Data

NO.	REF.NUMBER	P/W(KG)	A	B	C	D	MODEL
01	MSD07705	130.4	ø70	468	46	800	PC200-7
02	MSD01704	132.7	ø70	550	45	723.1	CAT320D
03	MSD05752	52.1	ø75	521	48	1037	ZAXIS230

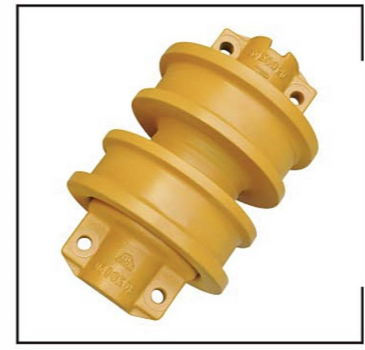
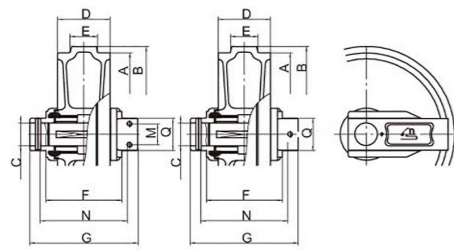


Idler Assy



Idler Ref. Tech Data

NO.	REF.NUMBER	P/W (KG)	ØA	ØB	ØC	D	E	F	G	K	ØL	M	N	Q	MODEL
01	MIR03011	83.92	480	450	55	135	58	210	300	283	M12	-	239	80	SK100,SK120
02	MIR01031	245	675	634	85	200	100	270	392	-	M20	60	350	135	E330
03	MIR07021	149.5	570	530	65	165	84	248	340	270	M16	66	280	105	PC200-5,PC200-6
04	MDI10110	85	539	507	50	112	54	-	300	-	1/2-13	42.8	127	-	D3C
05	MDI00160	357	773	730	68	4	106	-	468	587	M20	95	250	-	D85
06	MDI00180	620	931	885	95	266	127	-	627	642		120	355	-	D355

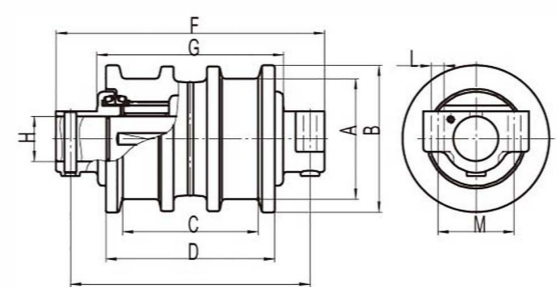


Track Roller Assy



Track Roller Ref. Tech Data

NO.	REF.NUMBER	P/W (KG)	ØA	ØB	C	D	E	F	G	ØH	I	ØL	M	MODEL
01	MBR05011	20.3	141	170	146	186	250	285	213	50	47	17	89	EX100
02	MBR05023	35.5	155	190	175	219	290	228	244	60	62.5	19	101.6	EX200-2
03	MBR07032	52.1	180	216	196	250	320	380	256	65	69	21.5	114	PC300-6
04	MBR07042	75.2	200	240	210	278	290	424	290	80	80	24	136	PC400-6
05	MBR07002	16.9	130	154	106	140	204	238	154	50	44	16	90	PC60-5
06	MDR00191	122	298	255	244	294	408	503	321	122	39	140	26	D155-D
07	MDR00170	70	258	221	210	252	380	452	306	-	36	136	21.5	D80-S
08	MDR00100	15.5	157	135	105	134	194	254	147	-	18	82	16	D20-S

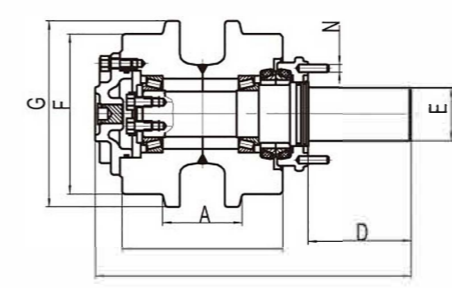


Carrier Roller Assy



Carrier Roller Ref. Tech Data

NO.	REF.NUMBER	P/W (KG)	A	B	C	D	ØE	ØF	ØG	I	ØL	M	N	P	MODEL
01	MTR20071	42.7	98	201	361.7	111	57.15	190	222	-	-	-	-	-	D7G
02	MTR07021	21.46	84	170	297	72	55	10	165	-	-	-	-	-	PC200-5
03	MTR05001	3.4	95	-	131.5	-	30	80	-	-	-	-	-	-	ZAX30



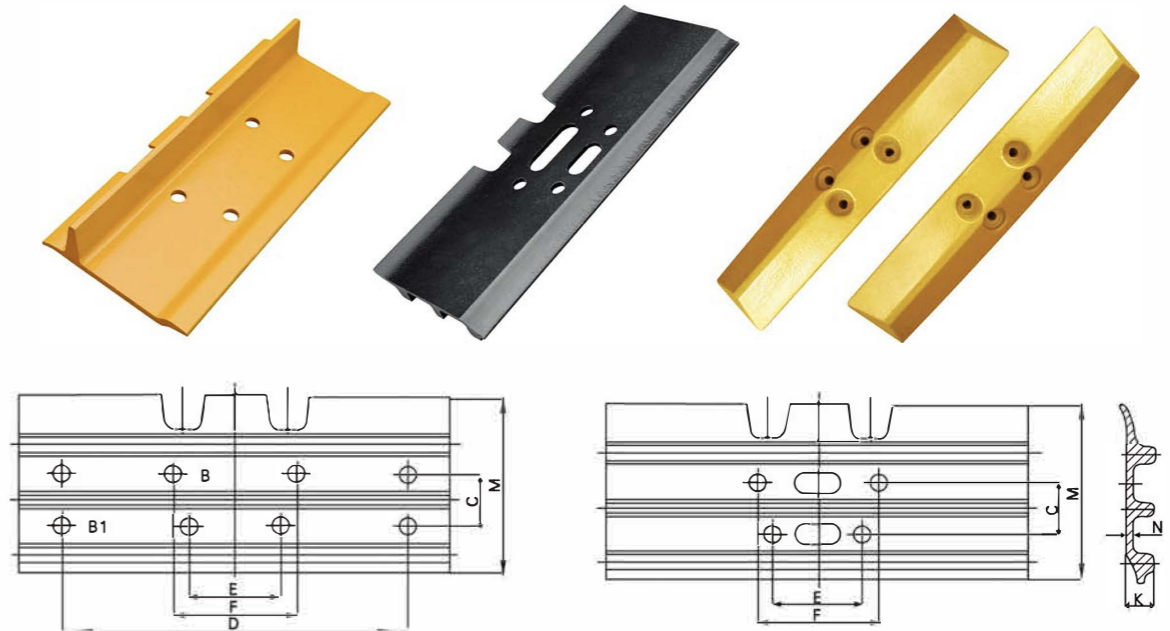
Track Chain Assy & Bushing Pin



日本MAZAK
MAZAK machining centre from



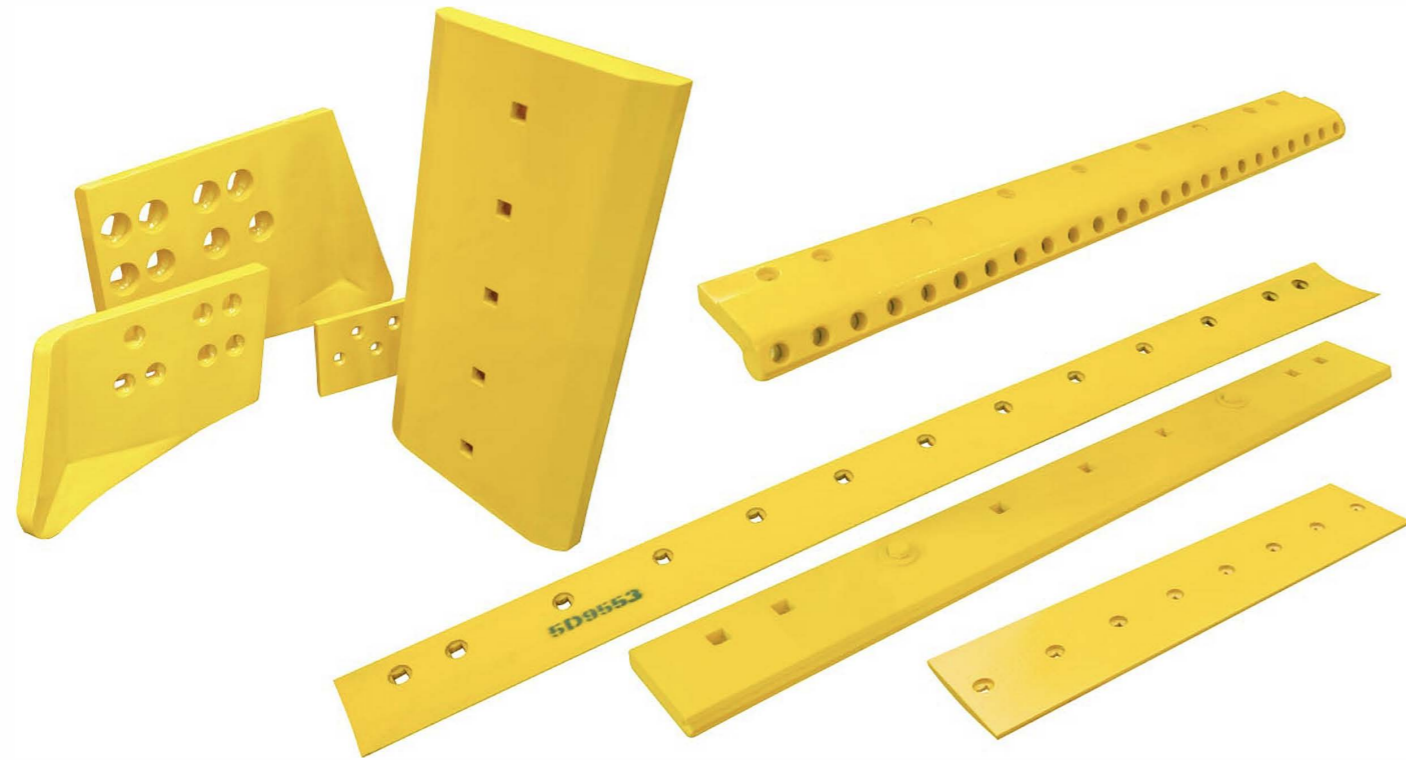
Track Shoe



NO.	Machine Model	OEM	BERCO	ITM	DIMENSION(mm)										
		Part.no			Pitch	B	B1	C	E	F	D	K	M	N	L
01	PC60-3/5	201-32-111	KM908/600	Z4021300N0610	135	∅12.5	∅14	43	72	99		19.5	152	6	600
02	PC120-1/2/3 PC80-1/3 PC80LC-3	203-32-41110		Z403130N0510	140	∅14.5		57	82.4	112.4		27	163	9	510
03	EX100-3/5 EX120-5	2037093	CR4835/500	Z1549300N0500	171	∅16.3		60.4	108	108	108	26.5	188	8	500
04	EX200-1	71400824		Z04103R0N0600	175	∅18.5	∅18	60	116	138		34.5	198	9.5	600
05	CAT315,317,318 CAT320,322	1265061	CR5360/500	Z01193C0N0500	190	∅21		69	119.6	155.6		34.5	219	8	500
06	PC200-1/2/3 PC220-1/2/3	KM1080/500	HT298/500	Z4012300N0500	190	∅18.5		62	124	160.4		36	219	10	500
07	CAT330,330BL 330C	2424N2222	CR5929/600	Z16303A0N0600	216	∅23.3		76.2	140	190		48	250	13	600
08															

Lubricated Track Chain				Dry Track Chain			
Pitch	Model	Pitch	Model	Pitch	Model	Pitch	Model
135	D20	203	D6D	90	SK015	171	SK100/R200
154	D31	203	D6H	101	EX30	175	PC100-5/EX200-1
155	D3C	216	D7G	140	FL4	190	CAT320/PC200-5
175	D50	216	D80/D85	149	CW341	203	EX300-1/PC300-5/E325
175	D5B	228	D155	154	EX60/PC60-6/ PC100-1	216	PC400-1/PC400-5/E330
203	D60/D65	260	D355	160	FL6	228	PC400-6/SH450/ PC650-8/EX600-1

Cutting edge / Blade



Bolt/Nut



Grader Blades











Part No.	Cutting Edge Thickness		Edge Width		Edge Length		Bolts per Edge	Nuts per Edge
	in	mm	in	mm	Ft.	m		
8D2786	1/2	13	6	152	6'	1.828	3F5108(13)	4K0367(13)
4T2968	5/8	16	8	203	6'	1.828	3F5108(13)	4K0367(13)
5D9732	3/4	19	8	203	8'	2.438	3F5108(17)	4K0367(17)
5D9559	3/4	19	8	203	7'	2.133	3F5108(15)	4K0367(15)
7D1577	3/4	19	8	203	7'	2.133	3F5108(15)	4K0367(15)
4T6508	1	25	10	254	7'	2.133	4F7827(17)	2J3506(17)
9J7701	5/8	16	8	203	6'	1.828	3F5108(13)	4K0367(13)
4T2242	1	25	8	203	7'	2.133	3F5108(13)	4K0367(15)

Bucket & Bucket Teeth




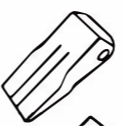









Bucket Series

Brand	Bucket Capacity(m3)	Materials Match
Komatsu	0.12-5.5 m3	High-strength Wear-resistant Plate+16MN +excellent tooth adapters, bucket teeth
Doosan		
Hitachi		
Kobelco		
Caterpillar		
JCB		
Hyundai		
Kato		
Sumitomo		



Pic				
 6I8803HD	 59SD	 40T	 25T	 85T
 115T	 30RC	 59SYL	 30SYL	 58RC

Excavator Teeth

PIC			STYLE		
	202-70-12130	PC120	STANDARD	4	8.82
	20X-70-23161	PC100		2.2	4.85
	208-70-14152	PC400		9.7	21.38
	205-70-19570RC	PC200	ROCK	5.4	11.9
	207-70-14151RC	PC300	CHISEL	8.5	18.74
	1U3302SYL	J300	SYL	4.8	10.58
	9N4302	J250	ABRASION	3.9	
	6Y3224	J225	STANDARD	4	8.6
	3T1220(4.0CM)	280	STANDARD	11.5	25.35
	E161-3027	R210	ABRASION	4.5	9.92

Bucket Bushing Series & Bucket Pin



Connecting Rod Series



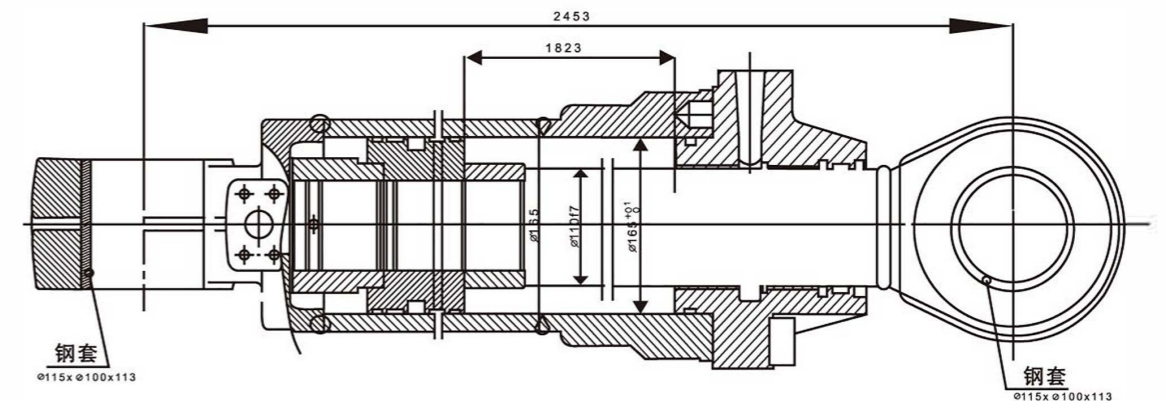
Chain Track Guard Series



Bucket Link Series



Cylinder List



KOMATSU	Hitach	Caterpillar	Kobelco	Hyundai	Doosan	Model	Part Name	Part Number	Unit Kgs
PC60-6-7	EX40	E70	SK07-N1	R60-5-7	DH55-5	D155	Cylinder,LH	175-63-13300	210
PC100-3-5-6	EX60-2	E70B	SK07-N2	R130	DH60-7		Cylinder,RH	175-63-13400	210
PC120-3-5-6	EX120-1	E120	SK09	R190	DH130		Lift cylinder	175-63-52700	216
PC160	EX120-2	E120B	SK60	R210-3	DH220-3-5		Cylinder,LH	175-63-42243	290
PC200	EX120-3	E200B	SK100-3	R210-5	DH225		Cylinder,RH	175-63-42343	290
PC210-7	EX200-1	E300B	SK120-1	R220-5	DH280		Cylinder,LH	175-63-43142	290
PC220-1	EX200-2	E311	SK120-3	R220-5CL	DH300		Cylinder,RH	175-63-43242	280
PC300-5	EX220-2	E320	SK200-6	R305-7	Volvo		Lift Cylinder Ass'y(LH)	14Y-63-X1014	
PC300-6	EX220-3	E320B	SK200-6E	R305-9	EC55	Lift Cylinder Ass'y(RH)	14Y-63-X1024		
PC350-74.5	EX230	E322	SK220-3	R335-7	EC240	-2A Tilt Cylinder Ass'y	14Y-63-01032		
						Cylinder Ass'y	14Y-63-01013		

Pump Catalogue



Modal	Serial No	Work pump	Steer pump	Transmission pump	Return pump	Main clutch pump
D65S-7	40001-	07443-67503	07430-72203	07432-71203	135-13-23500	
D155S-1	1001-	07400-10600	07440-72202	07433-71103	195-13-13500	
D65E-8	45001-	07441-67503	07430-72203	07432-71203	175-13-23500	07433-72400
D65E-12	60001-60515	705-11-40010	705-11-33530	705-11-33210	14X-49-11600	
D75S-3	7001 - 10000	07444-67504	07430-71400	07430-71300	135-13-23500	
D155S-1	1001-	07400-10600	07440-72202	07433-71103	195-13-13500	
WA400-1	10001-	705-56-34040		704-30-34110	705-11-35010	
D50-17		07400-40400				

Final drive/swing



Modal	Serial No
Komatsu	PC30, PC40, PC50, PC60, PC90, PC100, PC120, PC220, PC300, PC400, PC200-3, PC200-5, PC200-6, PC200-7, PC200-8
Hitachi	EX55, EX60, EX70, EX120, EX200, EX200-2, EX300-3, EX300-5, EX400
Kobelco	SK60, SK60-2, SK100, SK120, SK120, SK200, SK230, SK350
Sumitomo	SH60, SH120, SH200, SH200A3, SH240, SH265, SH280, SH305, SH350
Caterpillar	E70B, E120, E200B, E307, E312, E312C, E320B, E320D, E325, E330, E330B
Hyundai	R60, R130, R200, R225-7, R300, R305, R335
Volvo	EC210, EC240, EC290, EC360, EC460

Twin Ram

Hydraulic Track Link Press Machine

250Tons.: Fix different pitches (<228mm) of track links like PC60~PC400, D2~D8 etc.

300Tons.: Fix different pitches (<260mm) of track links like PC60~PC800, D2~D10 etc.

Hydraulic Press Machine

Rolling Machine
(Motor 3KW / 3PHS)
1300mmx880mmx1300mm

Separating Mould 2pcs
Supply 6 moulds for different pitch (154,171,175,190,203,216mm)

Frames
3pcs square benches
2000mmx550mmx800mm

Moulds
(Motor 5.5KW / 3PHS)
1900mmx530mmx131

Portable Press Link Machine

300Kgs / 0.45CBM

Mould

