



Golden Chatter



The Official Publication of the G.T.D.P.

February 2021


Volume 38 Issue 1



Let's Keep in Touch

NEWSLETTER EDITOR

WE'RE BACK!! The Board has taken a survey and found that you all would like to again hold meetings. It will be so nice to see you all. Any information you need about this meeting you will find under "Special News"

Bright side for you all is you can now bring me ALL those jars you have been saving for me for 15 months. I know how much clutter it was for your home and I can't thank you enough for continuing to save jars for me. 

I have a spelling checker,
It came with my PC;
It plainly marks four my revue,
Mistakes I cannot sea;
I've run this poem threw it,
I'm sure your please to no;
Its letter perfect in its weigh,
My checker told me sew.

Thank you.

Rosemary Habers
2020 Newsletter Editor
habersr1@aol.com

PRESIDENT'S MESSAGE

Hello Painting friends--Spring has arrived and we have all survived a snowy winter. Spring is one of my favorite seasons, it represents a new beginning. I am hoping we can start a new beginning with our meetings and classes as well. I have missed all of you. The board will be meeting shortly to discuss the possibility of resuming our meetings and classes. Please keep an eye on your email, Rosemary will be notifying everyone of our decisions. I hope all of you are well and that most of you have been able to get the vaccine, if you chose to. Right now Sherry Nelson is scheduled for the September meeting weekend, details will follow shortly. Looking forward to seeing all of you soon, take care and stay safe and healthy.

SPECIAL NEWS

I'm so excited to report we WILL be having our May Meeting, Sunday May 16th.

There will be major changes in that you will be requested to bring your own lunch. The Chapter will be supplying pop in cans and that's all. It has been decided that since there will be so many people handling the coffee pots that for now we will not be offering coffee, sorry.

By now I think all of us have had our 2 shots of the vaccine but it's best to err on the side of caution so we are requesting that masks be worn at all times as per Governor mandate with the exception of eating. We also request there be an attempt to social distance when possible. We do have people with serious illnesses so out of respect to them we are requesting your co-operation with these requests. We do understand that some of you have been in contact with others from the group in painting get togethers and such so sitting together is fine of course just please respect other who prefer to sit away from anyone. Personally, I hate all these restrictions but it's better to follow them than risk the possibility, no matter how small, that we could possibly get or give the virus to someone.

We are also having a little make-it/take-it for you to refresh your painting skills so bring you acrylic painting supplies.

Thank you soooooooooo much for your cooperation.

Rosann.

School's Back and So Is Art



Linda Wyke, Karen Pagaskey Sharon Livingood

Long ago when men cursed and beat the ground with sticks, it was called witchcraft..
Today, it's called golf.

Ellen Belisle



Ellen Belisle (Cont'd)



Bill Habers



Rosemary Habers



Susan Jaap



Pat Jenkins



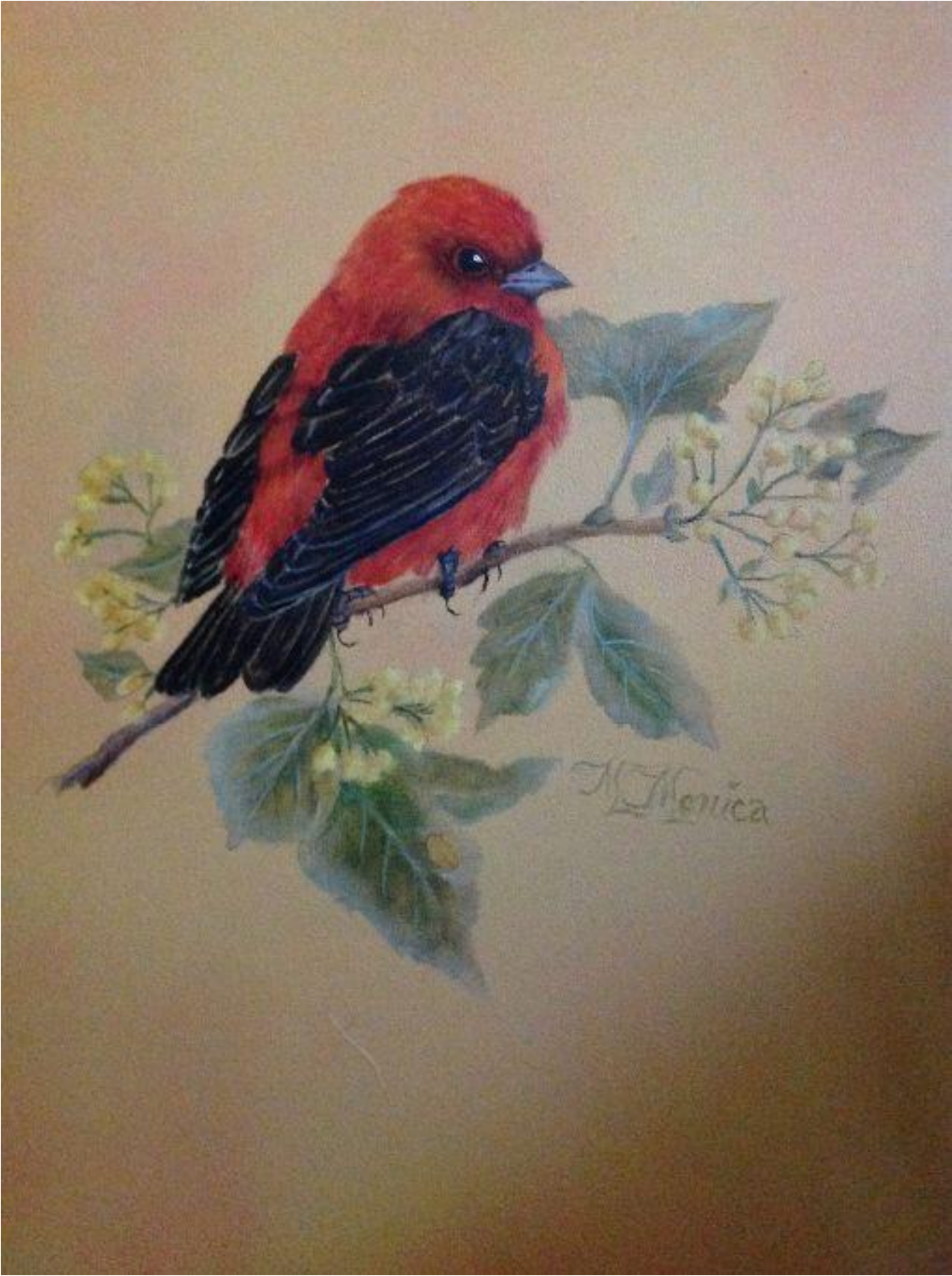
Sharon Livingood



Karen Pagasky



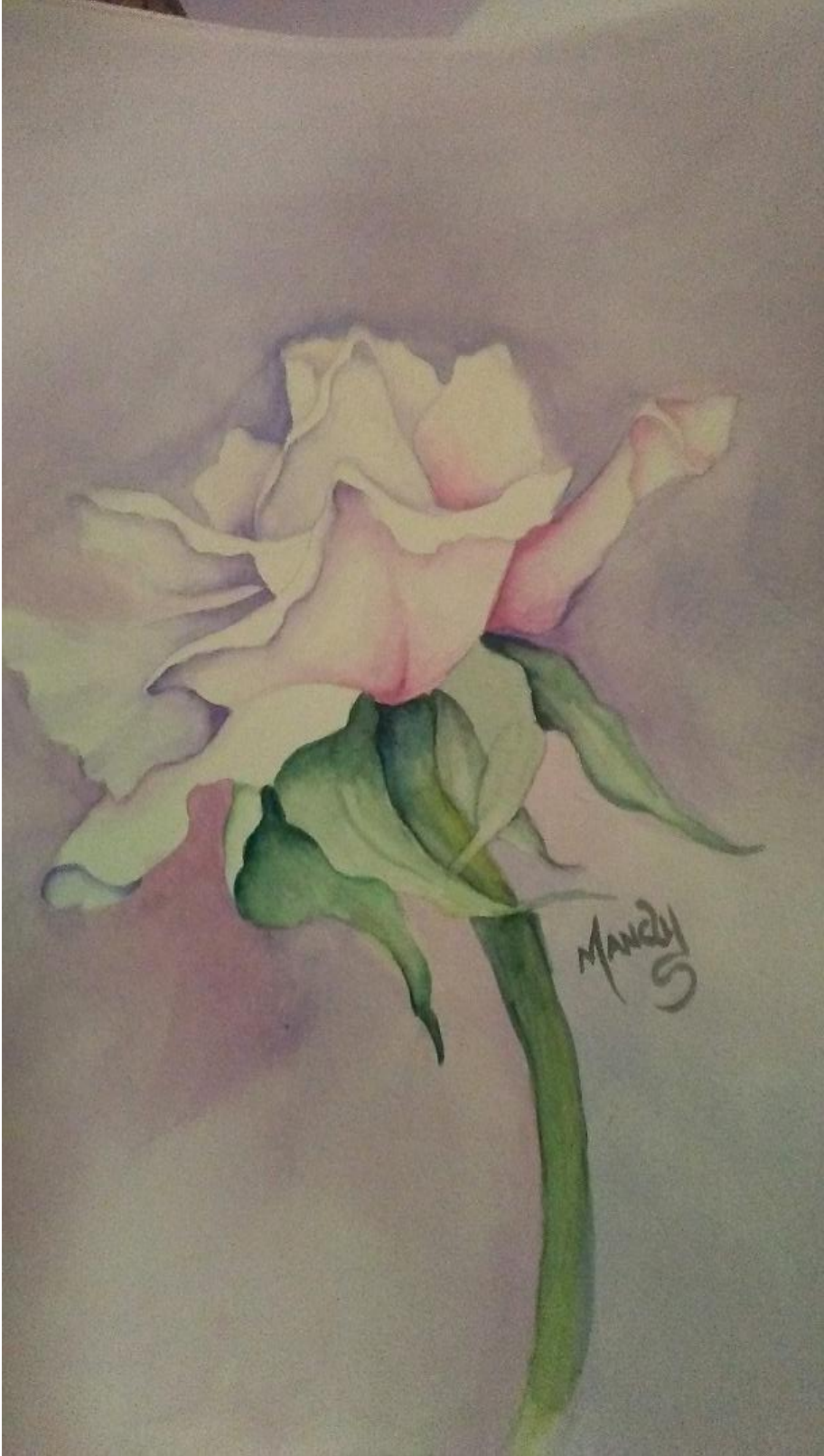
Monica Schallenberger



Amy Shelhamer



Mandy Steele



Linda Wyke



PROGRAM

Chairman – Cindie Martincic

September 16-19, 2021

As had been previously announced Sherry Nelson is coming in September. If you remember, Ellen Hildenbrand left us money in her Will to pay for classes. We used a majority of the money for the Cheri Rol class in 2019. The leftover money is going to supplement this Sherry Nelson seminar.

Due to the pandemic uncertainties, there must be certain procedures put in place. First, everyone must wear a mask, Second, we can only accommodate 23 students per class to guarantee 6-foot distance between students. Third, these classes are only for members who had their dues paid for 2019. If you still have Golden Dollars they **CANNOT BE USED FOR THIS CLASS**. You will be given an opportunity to use them later. Fourth, enrollment will be on a first come, first registered basis. You **MUST** have your monies paid by June 1 to be considered registered. We expect these classes to fill quickly so a waiting list will be very limited. Rosemary will send out notification when classes are full.

Currently, we are not planning to have the event catered so it will be a bring your own lunch. We are looking into having bag lunches being delivered and if we can arrange something you will be notified.

Cost of classes is \$50 per day. Please note that the butterfly is a two-day class so \$100 will be due. Once your money has been received you will receive the required prep instructions from Rosemary. You must provide your own surfaces. Sizes are listed under the photographs.

Contact Cindie Martincic, by phone or e-mail to register then when confirmed there is space mail your check to her at 98 Rawson Drive, Washington, PA 15301

PROGRAM (Cont'd)



Thursday - Japanese Iris and Jug, 6" x 14", 1 day class, Oils

PROGRAM (Cont'd)



Friday - Saturday, 2-day class, oils. Painted on 16" x 16" panel or table top or panel to be laid on table top for ease of painting

PROGRAM (Cont'd)



Sunday - Bald Eagle in the Snow, 11" x 14". One day class, Oils.

General Tips

Try cleaning scratches on glass or plexiglass with toothpaste

When using picture wire to hang a framed piece, wrap tape around the wire at the center to prevent slipping.

Soak spray can nozzles in nail polish remover to unclog.

Make small nail holes along the inside rim of varnish or sealer cans. When wiping the excess from the brush will run back into can.

Clip the corners off junk mail envelopes and use them as page markers by slipping them over the corner of the page. Write the name of the pattern on the corner for easy reference.

For a quick brush prop fold a thin piece of cardboard in half length-wise and cut 4 or 5 diamond shaped notches along the folded edge. Lay your brushes in the notches to keep them from rolling around while painting.

Spread a little Vaseline inside the cap of a new tube of paint to prevent sticking.

To touch up a scratched or damaged frame make a paste from instant coffee and a small amount of water and rub in with a soft rag.

Prop wet paintings in upright position to dry. It's harder for dust and grungies to settle on an upright surface.

To locate rough spots in a "smooth" surface slip your hand into an old nylon stocking and rub across surface. Rough spots will snag on the nylon.

Painting on Wood

To strip old wood, choose a paint and varnish remover with a thick consistency to avoid messy drips. Use only in well ventilated areas.

After using remover to strip old wood neutralize the surface with denatured alcohol and sand lightly to smooth.

To fill knotholes or depressions, using wood putty fill the layers higher than the surface since the putty may shrink then sand smooth.

Be careful your hand does not create swirls in the wood when you reach the end of the sanding stroke. Instead of making a "U-turn" at the edge of the wood, let the sandpaper run straight off the wood.

Wrap your sandpaper around a small board (2" X 3") this will make sanding easier.

If your surface is too slick for painting after sealing you applied too much sealer. Sand off some of the existing sealer

If your wood feels "fuzzy" after sealing and sanding, apply a second coat of sealer then sand with #0000 (4 ought) steel wool.

To sand hard to reach areas, fold the sandpaper in use. The creased edge gets down in the thin ridges or use an emery board or wrap sandpaper around a pencil to sand in concave areas

If a dent in the wood is too deep to sand away moisten the dented area with water and hold a hot steam iron close to the surface and the wood will raise immediately. Let dry then sand.

"Ode to Getting Old"

Just a line to say I'm living, That I'm not among the dead
Though I'm getting more forgetful And something's slipping in my head;

I got used to arthritis, To my dentures I'm resigned. I can manage my bifocals,
But oh, how much I miss my mind.

For sometimes I cannot remember When I stand atop the stairs, If I must go down for something
Or if I've just come up from there.

And before the fridge, so often My mind is filled with nagging doubt. Have I just put food away, or
Have I come to take some out.

I called a friend not long ago, When they answered I just moaned. I hung up quickly without speaking,
For I'd forgotten who I'd phoned.

And when the darkness falls upon me I stand alone and scratch my head. I don't know if I'm retiring,
Or just getting out of bed?

Once I stood in my own bathroom, Wondering if I'd used the pot. I flushed it just in case I had
And sat down just in case I'd not.

So, now if it's my turn to write you. There's no need for getting sore It may be that I think I've written
And don't need to write no more.

Now I stand beside the mail box With a face so very red Instead of mailing you the letter I have
opened it instead.

Author Unknown

Editor's 2¢ worth
BASKET LUNCHEON

Chairman – Karen Pagasky – Hope to see you next year.

CORRESPONDING SECRETARY

Chairman – Pat Jinkens - *Know someone who needs a card let Pat know*

HOSPITALITY

Chairman – Susan Jaap - *Will let you know before next meeting*

MEMBERSHIP

Chairman – Rhonda Gillespie – *A motion was made and passed that the dues paid for 2020 will be carried over to 2021. Also, please remember to bring your National card to the May Meeting and show it to Rhonda or Rosemary. Thanks*

POINTS

Chairman – Karen Pagasky – *A motion was made and passed by the Board that all points given out in January 2020 will be honored for 2021 classes with the exception of the Sherry Nelson Seminar.*

RECORDING SECRETARY

Recording Secretary – Laura Angelo - No Meeting, no minutes

SERVICE

Chairman – Carol D'Abruzzo -*Took a box home to paint? Return it to Carol at the next Meeting.*

Please continue saving jars for me. Thank you 

TREASURER

Rosemary Habers - *I have NO checks to be deposited. Checks written for my canceled class will be returned next meeting.*

WAYS & MEANS

Chairman – Jeanne Delbusso - No Meeting, no raffles.

BIRTHDAYS

JANUARY

01 Gail Bodkin
25 Ellen Belisle

FEBRUARY

04 Karen Pagasky
07 Gwen Bonomo
18 Mary Ann Dunbar
25 Marjorie Morris

MARCH

07 Carol D'Abruzzo
13 Mandy Steele
16 Dominique Nashed
17 Donetta Brunette
19 Pat Stepko
25 Laura Angelo

APRIL

03 Sharon Henson
11 Eileen Bogacz
23 Dot Hoffman
27 Debbie Miller
28 Gerry Dille

MAY

08 MaryAnn Yurus
31 Rosemarie Geer

JUNE

08 Sandra Camarota
25 Rosalie Piccola
28 Linda Wyke

JULY

01 Marjorie Orlandini
10 Jennie Delbusso

AUGUST

02 Debbie Shillingburg
14 Linnea Ondick
20 Val Vandenberghe
26 Dolores Khalouf
Miranda Scanlon

SEPTEMBER

05 Barb Leffler
16 Rosemary Habers
22 Cindie Martincic
23 Ciara Wagner
25 Sharon Livingood
28 Rosann Wagner

OCTOBER

12 Pat Diettrich
26 Virg Simmons

NOVEMBER






02 Debra Valentino
09 Bill Habers
16 Monica Schallenberger
24 Ruby Dunlap
28 Joan Schneider
30 Rhonda Gillespie

DECEMBER

07 Paulette Caldwell
09 Pat Jenkins
13 Susan Jaap
23 Judy Shuba
30 Carol Neth

2019 BOARD MEMBERS

	E-V	President:	Rosann Wagner	724-745-4212
	E-V	1 st VP/Program:	Cindie Martincic	724-222-7449
	E-V	2 nd VP/Membership:	Rhonda Gillespie	724-941-0188
	E-V	Recording Secretary:	Laura Angelo	724-785-5592
	E-V	Treasurer:	Rosemary Habers	412-741-5158
	E-V	Ways and Means:	Jeanne Delbusso	724-941-2415
	E-V	Publicity:	Mary Ann Yurus	724-745-8337
	E-V	Newsletter Editor:	Rosemary Habers	412-741-5158
	E-V	Corresponding Secretary:	Pat Jinkens	724-225-6399
	A-V	Historian:	Delores Khalouf	412-292-1254
	A-V	Hospitality:	Susan Japp	724-745-5873

	A-V	Points System:	Karen Pagasky	724-947-5290
	A-NV	Decorative Painting Month:	Rhonda Gillespie	724-941-0188
	A-NV	Nominating:		
	A-NV	Parliamentarian:	Mandy Steele	304-216-8683
	A-NV	Service:	Carol D'Abruzzo	412-881-1208
	A-NV	Spring Basket Luncheon:	Karen Pagasky	724-947-5290

E – Elected A – Appointed V – Voting NV – Non-Voting

2020 Calendar of Events

May 16	Rosemary Habers - Make-it/Take-it
July 18	TBA
September 16-19	Sherry Nelson - TBA (class begins at 9:00 each day)
November 21	TBA

**Meetings are held at the: I.O.O.F Hall
3684 Finleyville-Elrama Rd.
Finleyville, Pa. 15332**

Unless stated otherwise painting classes start at 10:00a.m. Doors open one half hour before the class start time.

Visit the Chapters website at GTDP.org