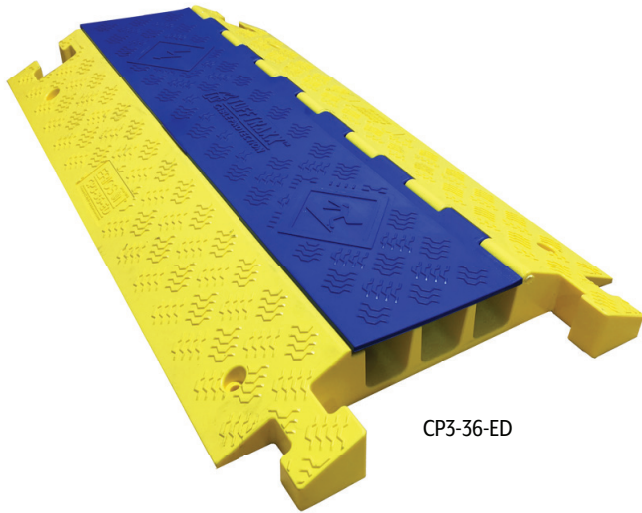


TuffTraxx™ Series Cable & Hose Protectors



CP3-36-ED

Part Numbers: See Page 2

Ericson's TuffTraxx series of industrial duty and extreme duty cable protectors deliver unmatched security and protection against cable and hose damage. Easy to install and reconfigure, the non-metallic TuffTraxx series shields interconnect cabling from harmful equipment traffic, thus minimizing expensive down-time and repairs.

Protecting pedestrian traffic from dangerous trip hazards, whether at the work site or during public events, has never been easier than with this safe and affordable solution. Constructed from light-weight, durable polyurethane and tested to rigorous quality and operational standards, these products are built to stand years of punishing service without compromised performance.

TuffTraxx industrial and extreme duty cable protectors feature a compact, flexible design that simplifies setup and transportation.

Standard Product Features:

- Lifetime warranty
- Industrial and extreme duty service ratings
- Best in-class load ratings, up to 50,000 lbs/axle
- Customizable to match corporate branding style
- Non-conductive shock barrier protection
- Rounded dividers protect cables from snags and tears
- T-style connector interlocks for secure operation, also easy to interlock with other cable protector brands
- Hinged lid for easy cable loading
- Rugged, all-weather polyurethane construction
- Tread plate surface for increased traction
- Clearly identifiable molded safety warning symbols
- Meets NEC, CEC, & OSHA requirements
- Large capacity (2.25 inch) linear sections
- Convenient stake-down holes provided
- Easy to carry handle molded into the back

See page two for specifications

Applications:

- Oil / Gas Exploration
- Digital / Telecommunications
- Mining Operations
- Stadiums / Racetracks / Arenas
- Oil / Gas Refineries
- Defense / Safety
- Carnivals and Fairs
- Universities / Public Schools
- Construction
- Utility Maintenance
- Rental Services
- Convention / Theaters
- Entertainment Venues
- Sporting Events
- Transportation
- Aerospace / Airports

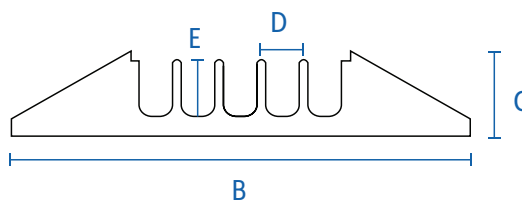
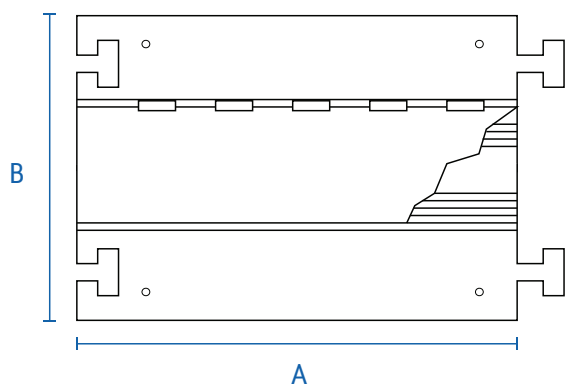
Notes: Safety warning symbol per ANSI Z535.3-1991.

Specifications:

Material:	
Straight section body	UV resistant, stabilized polyurethane
Hinges	Reinforced fiberglass
Operating Temperature Range:	-40°F to 120°F (-40°C to 49°C)
Maximum Load per Tire (straight section):	
CP5-36-ID	13,500 lbs @ 70°F (6,123 kg. @ 21°C)
CP3-36-ED	25,000 lbs @ 70°F (11,340 kg. @ 21°C)
CP4-36-ED	25,000 lbs @ 70°F (11,340 kg. @ 21°C)
CP5-36-ED	25,000 lbs @ 70°F (11,340 kg. @ 21°C)
Maximum Load per Axle (straight section):	
CP5-36-ID	27,000 lbs @ 70°F (6,123 kg. @ 21°C)
CP3-36-ED	50,000 lbs @ 70°F (22,680 kg. @ 21°C)
CP4-36-ED	50,000 lbs @ 70°F (22,680 kg. @ 21°C)
CP5-36-ED	50,000 lbs @ 70°F (22,680 kg. @ 21°C)

Cord Type*	Voltage	CP5-36-ID, CP4-36-ED, CP5-36-ED	CP3-36-ED
SOOW Portable	600 V	2/3	2/4, 2/5
SOOW Control	600 V	18/30, 16/52, 14/24	18/50, 16/60, 14/50, 12/50, 10/30
Type W	2000 V	2/2, 2/3, 4/4, 6/5	2/2, 2/3, 4/4, 6/5, 2/0-5C, 3/0-4C, 4/0-3C
Stage Lighting	600 V	4/0	4/0
Welding	600 V	500 MCM	500 MCM
Utility Ground	600 V	2/0, 4/0	2/0, 4/0
Type G, G-GC	2000 V	8/3 - 4/3	8/3 - 4/3, 4/0-3C
Type RHH-RHW / DLO Cable	2000 V	444 MCM	777 MCM

*Max O.D. per channel



Catalog #	Description	A-Length	B-Width	C-Height	D-Channel Width	E-Channel Height	Weight
CP5-36-ID	Industrial Duty 5-slot, 36" straight section	36" 91cm	17.25" 44cm	1.95" 5cm	1.95" 5cm	1.95" 5cm	20.6 lbs. 9.3 kg
CP3-36-ED	Extreme Duty 3-slot, 36" straight section	36" 91cm	20" 51cm	3.05" 8cm	2.09" 5cm	2.25" 6cm	28 lbs. 12.7 kg
CP4-36-ED	Extreme Duty 4-slot, 36" straight section	36" 91cm	19.5" 50cm	2.25" 6cm	1.80" 4.5cm	1.35" 3.5cm	23.5 lbs. 10.7 kg
CP5-36-ED	Extreme Duty 5-slot, 36" straight section	36" 91cm	19.5" 50cm	2.25" 6cm	1.35" 3.5cm	1.35" 3.5cm	23.5 lbs. 10.7 kg



Ericson Manufacturing Company
4323 Hamann Parkway
Willoughby, OH 44094, U.S.A

1.800.374.2766
info@ericson.com
www.ericson.com

LI000292 CAN A