



# ANGUS BULL SALE

AT THE RANCH FEB. 28 2015, 3 P.M. FORT RICE, ND



Fellow Cattlemen:



Aaron & Sheyna Strommen

Here we are, again. This time last year we were saying that the market has never been better and now, again, we can say it's better than ever. We hope that you are enjoying the ride. What an exciting time to be in the cattle business!

We hope you've captured as much of this revenue as possible by maintaining downward pressure on production costs. As input costs continue to rise, profitability in the beef business will be driven by cowherds that have the genetics to do more with less. Now and into the future, profitable and sustainable operations will run cowherds that provide the desired outputs with minimal inputs.

Throughout our catalog, you will find a detailed explanation of our ranching philosophy. It is pretty simple: while record prices are encouraging, managing input costs and producing cattle that will do more with less will help build and maintain profitability now and into the future. This is why we take a balanced approach to cattle selection. We select and breed for cattle that perform on grass and thrive with minimal supplementation, but we also demand that these cattle perform in the feedlot and on the rail.

This set of 100% A.I.-sired bulls is, without question, the best we've raised. The Resource bulls have performed above our expectations. The Thunders and the Revivals are an exciting set of balanced-trait bulls you can use on cows or heifers with confidence.



Cassidy, Cooper & Clint Strommen

We invite you to attend our 12th Annual Angus Bull Sale, Saturday, Feb. 28, 2015, at 3 p.m. at the ranch. We have a preset base price of \$3,000 on every bull selling. The auction will open at the base price and proceed from there. We have a local auctioneer who will take his time and allow you, our valued customers, to buy in a low-pressure setting. The bulls will not go through the ring, but will be available for viewing right outside the sale barn. Once the auction starts, a large screen will play a video of each bull as he sells. Videos are available at [www.StrommenRanch.com](http://www.StrommenRanch.com).

Thank you to our repeat customers for your trust and confidence in our cattle. We invite new and returning customers to come and take a look at this year's offering and the dams that stand behind them. We will work hard to gain your trust, friendship and business. We take a lot of pride in our cattle and feel fortunate to be raising our family doing what we love to do most.

- Aaron & Sheyna Strommen





## 2015 ANGUS BULL SALE

AT THE RANCH • FEB 28, 2015 • 3 P.M.

### SALE DAY PHONES

Aaron's Cell • (701) 290-7983

Sheyna's Cell • (701) 290-3886

Ranch Phone • (701) 445-2020

Chad Stoltz, Auctioneer • (701) 290-0546

**SALE TIME** • The sale starts at 3 p.m. CST. Please join us for lunch beginning at 1 p.m. Bulls will sell in catalog order.

**TERMS AND CONDITIONS** • All animals sell under the standard terms and conditions of the American Angus Association. Terms of the sale are cash. Full payment is due on sale day, unless prior arrangements have been made.

**FERTILITY & GUARANTEE** • All bulls will pass a fertility exam performed before delivery by Dr. Pat Bierman of the Mandan Vet Clinic. We will guarantee all bulls selling for a 90-day breeding season for the purchase price minus salvage value. If there is a problem with your bull we would like to know by Sept. 1st.

**SALE ORDER** • The bulls will sell in consecutive sale book order.

**FEEDING & DELIVERY** • We will keep all bulls free of charge until delivery. We will start deliveries May 1<sup>st</sup>. We will offer free delivery within 300 miles of Strommen Ranch.

**HEALTH** • All bulls have been on a complete health program as prescribed by Dr. Pat Bierman of Mandan Vet Clinic. Bulls will be given a vaccination for foot rot when they are fertility tested.

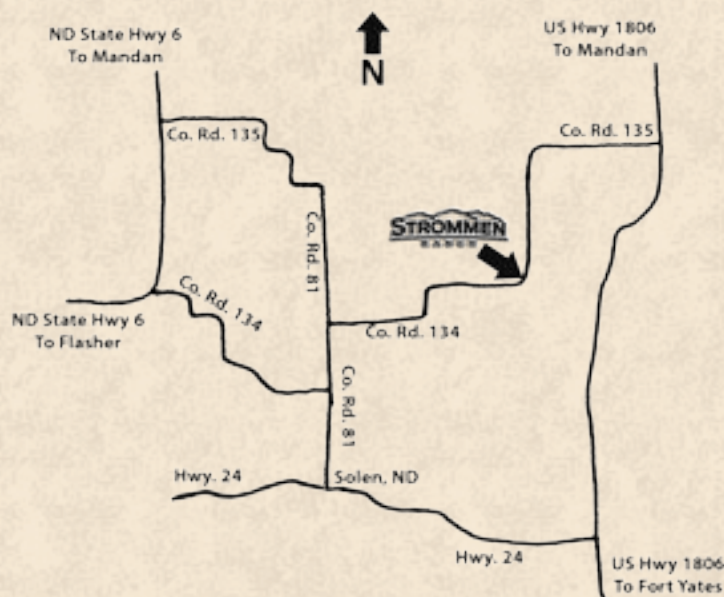
**BULL DEVELOPMENT** • These bulls have been handled correctly and developed without **ANY** creep. They have been fed just enough to express genetic differences, but not overfed as to compromise soundness or longevity. We want you to have a bull that will do his job and last for years. It is important to us that these bulls not only perform from birth to yearling but from birth through breeding. We believe our 90-day breeding season guarantee, detailed above (Fertility & Guarantee), is among the best in the industry.

**DISCOUNTS** • We will offer a \$50/head discount if you purchased a bull last year and a \$50/head discount for volume purchases of 2 or more head.

**RETAINED INTEREST** • Strommen Ranch is retaining 1/3 semen interest in all bulls selling.

**DIRECTIONS TO THE RANCH** • From Mandan's Cenex on Main Street, take Highway 1806 South 27.5 miles. Turn West onto County Road 135. Go West about 4 miles. The road curves South. Continue South 3.5 miles. The ranch is on the West side of the road. Roads will be marked.

From Solen, go North on County Road 81 for 5 miles, then turn East onto County Road 134 for 7 miles.



**LUNCH** • Please join us for lunch beginning at 1 p.m.

**AUCTIONEER** • Chad Stoltz, Dickinson, (701) 290-0546.

**LIABILITY** • Anyone attending this sale does so at their own risk. Neither the owners or anyone connected to this sale, assumes any liability, legal or otherwise.

**SIGHT UNSEEN PURCHASES** • If you, for some reason, are unable to attend the sale, but wish to place a bid, feel free to call us and we will handle your bid as if you were here. If you wish to be on the phone during the sale, we will try to accommodate your request. Please let us know in advance so arrangements can be made. All sight unseen purchases are fully guaranteed.

**BASE PRICE** • All bulls will have a minimum price of \$3,000 sale day. Bidding will begin at the base price.

**VIDEOS** • Watch videos of the bulls at [www.StrommenRanch.com](http://www.StrommenRanch.com).



**SAV RESOURCE 1441**



**R R RITO 707**



**Lot 3 • S R Resource 415**



**Lot 9 • S R Resource 449**



**Lot 5 • S R Resource 441**

REFERENCE  
SIRE

## SAV RESOURCE 1441

BD: 1/7/2011

Reg #: 17016597

#R R Rito 707  
**Rito 707 of Ideal 3407 7075**  
Ideal 3407 of 1418 076

#S A V 8180 Traveler 004  
**S A V Blackcap May 5136**  
#S A V May 2397

Rito N Bar  
Eriskay of Rollin Rock 3  
#Ideal 1418 of 8103 4286  
Ideal 076 of 692 8375  
#Sitz Traveler 8180  
Boyd Forever Lady 8003  
#S A F 598 Bando 5175  
S A V May 7238

CE	BW	WW	YW	Milk	Dam's Production
1	3.9	75	130	35	4/111

Upon much research, evaluation and consideration, we decided that Resource needed to be a part of our program. We've been looking to incorporate close-up Rito 707 breeding and we think Resource is the best choice. This very moderate-framed bull is tremendously long, thick and stout, with as much Angus breed-character as you can put in one. He brings to the pasture the basics of efficiency and real-world fleshing ability with muscle, masculinity and superior feet quality.

We evaluated many Resource progeny and full siblings and liked what we saw. Included in the evaluation were 13 flush sisters of Resource. They were consistent in their phenotype and their fleshing ability, udder quality and feet were very good. His dam records a weaning ratio of 4/111 and will reach nearly \$2 Million in direct progeny sales. These cattle fit our ideals and philosophy on efficient, grass-based cattle production.

REFERENCE  
SIRE

## HA IMAGE MAKER 0415

BD: 1/23/2000

Reg #: 13739532

#R R Hero 6267  
**#Hero 6267 of R R 2418**  
R R Everelda Entense 0413

H 96 Rito 2100 7371  
**H A Rito Blackcap 9038**  
H A Blackcap 3835

#Highwood Hero L C H  
#Blackbird of R R 1204  
#Q A S Traveler 23-4  
R R Everelda Entense 8320 TPB  
#Rito 2100 G D A R  
Rito Eileenmere 378 of 96  
Band 105 of Hyline 2380  
#H96 Blackcap Eileen 380

We had the opportunity to purchase embryos out of Sitz Barbaramere Nell 798, a daughter of OCC Bonanza 880B, that was mated to HA Image Maker 0415. We think this will be a good outcross for our program, while maintaining our demands for functional, efficient cattle with milk and fertility. We retained 7 flush sisters that will enter our herd.

CE	BW	WW	YW	Milk	Dam's Production
11	.5	66	105	35	



## CONNELY THUNDER



Lot 7 • S R Thunder 407

REFERENCE  
SIRE

## CONNELY THUNDER

BD: 1/28/2005

Reg #: 15148659

#Jauer 353 Traveler 589 27  
#Baldridge Kaboom K243 KCF  
Pleasanta of Conanga 736

Jauer 7111 Traveler 353 719  
Jauer 6807 Traveler 27 085  
#G T Maximum  
#Pleasant Pill of Conanga  
#Tehama Bando 155  
#Bon View Dora 56  
#Schoenes Fix It 826  
Party Date of Conanga

#Bon View Bando 598  
#Parka of Conanga 241  
Partina of Conanga 6237

CE	BW	WW	YW	Milk	Dam's Production
11	-.6	46	91	27	

After years of seeing tremendous daughters in a number of herds, we finally used this proven calving-ease sire. We appreciate his extreme balance of calving-ease, performance and carcass traits, and his ability to produce the exact type and kind of female we have been selecting for with the phenotype we like.

This proven, Pathfinder sire excels in making daughters that are moderate in their mature frame, deep ribbed, easy-keeping and he leads the breed in heifer pregnancy EPD. His progeny have a near perfect foot, have superior udder structure and have a great disposition. You will see a continual influence of Thunder in our cowherd for years to come.



## OX BOW REVIVAL 1313



Ox Bow Manor 933 • Revival's Dam



Ox Bow Manor 7105 • Revival's Granddam

REFERENCE  
SIRE

## OX BOW REVIVAL 1313

BD: 1/26/2011

Reg #: 17054381

#Sitz Upward 307R  
Sitz Dash 10277  
Sitz Everelda Entense 2665

#Connealy Onward  
Sitz Henrietta Pride 81M  
#O C C Emblazon 854E  
Sitz Everelda Entense 4948  
#Sitz Alliance 6595  
Ext of Conanga 6790  
K C F Bennett Index  
Ox Bow Manor 335

#K C F Bennett Total  
#Ox Bow Manor 933  
#Ox Bow Manor 7105

CE	BW	WW	YW	Milk	Dam's Production
10	-.3	48	87	21	

Strommen Ranch and Genex selected Ox Bow Revival 1313 as the \$11,000, high-selling bull from Ox Bow Ranch's spring 2012 sale. After evaluating Revival, his dam and granddam, we knew he was a logical choice for our program. He delivers the convenience traits we believe good cattlemen want. He also provides the maternal traits we demand for low-maintenance, problem-free, efficient females: calving-ease, fleshing ability, udder quality, disposition, structure and fertility. Ox Bow Revival 1313 has exceeded our expectations for calving-ease, growth and temperament.



**LOT 1 ~ S R RESOURCE 419**



*Leachman Right Time • Maternal Grandsire*



*DHD Traveler 6807 • Maternal Great Grandsire*



*S R Beauty 502 • Dam*



*M H Beauty 723 • Granddam*



*V D A R Beauty 50 • Great Granddam of Lots 1 & 2*

**LOT 1 S R RESOURCE 419**

BD: 3/9/2014

Reg #: 18012207

Rito 707 of Ideal 3407 7075  
**S A V Resource 1441**  
 S A V Blackcap May 4136

#R R Rito 707  
 Ideal 3407 of 1418 076  
 #S A V 8180 Traveler 004  
 #S A V May 2397  
 #N Bar Emulation EXT  
 Leachman Erica 0025  
 #D H D Traveler 6807  
 V D A R Beauty 50

BW	84
ADJ 205	608
WWR	105

#Leachman Right Time  
**S R Beauty 502**  
 M H Beauty 723

CE	BW	WW	YW	Milk	Dam's Production
6	1.3	54	97	26	8/99

419 is our lead-off Resource son and for good reason. He is backed by one of our top cow families and has a pedigree second to none for performance and maternal value. His perfect uddered Right Time dam was produced in our ET program and is phenotypically one of the most impressive females on the ranch. 723, the donor granddam now owned by Todd Finke of Berthold, N.D., was one of the easiest keeping, biggest-bodied cows we owned. 419 exemplifies the balance of everyday traits that are needed to drive profit. Maternal brothers are working for Wayne Gerbig of Amidon, N.D., and Scott Stutrud of Towner, N.D.



**LOT 2 ~ S R RESOURCE 455**

**LOT 2 S R RESOURCE 455**

BD: 3/15/2014

Reg #: 18012208

Rito 707 of Ideal 3407 7075  
**S A V Resource 1441**  
 S A V Blackcap May 4136

#R R Rito 707  
 Ideal 3407 of 1418 076  
 #S A V 8180 Traveler 004  
 #S A V May 2397  
 #D H D Traveler 6807  
 Dixie Erica of C H 1019  
 #High Valley 4C6 Ambush  
 V D A R Beauty 50

BW	92
ADJ 205	655
WWR	113

#O C C Emblazon 854E  
**#S R Beauty 507**  
 #M H Beauty 938

CE	BW	WW	YW	Milk	Dam's Production
2	3.1	62	102	28	8/104

Cowboy's take notice! If you like bulls that are rugged, masculine thick and long, then take a look at this guy. 455 has been a standout since birth. Our Beauty cow family has been really good and super fertile. His second-generation Pathfinder dam, 507, has stuck A.I. 9 out of 10 years and is due again with a full brother to 455. The longevity of this cow family has been great and the Pathfinder granddam was productive long into her life. Strike your match on this one because he is solid as steel. Maternal brothers sold to Tracey Rixen of Richardton, N.D., Jim Hornbacher of Menoken, N.D., and Cody Sand of Ashley, N.D.



Larks Canyon 74D4 • Maternal Grandsire



Alberda Traveler 416 • Maternal Great Grandsire

**LOT 3 ~ S R RESOURCE 415**

**LOT 3 S R RESOURCE 415**

BD: 3/8/2014

Reg #: 18012200

Rito 707 of Ideal 3407 7075  
**S A V Resource 1441**  
 S A V Blackcap May 4136

#R R Rito 707  
 Ideal 3407 of 1418 076  
 #S A V 8180 Traveler 004  
 #S A V May 2397

BW	88
ADJ 205	685
WWR	118

#Larks Canyon 74D4  
**S R Blackcap 702**  
 S R Blackcap 510

#N Bar Emulation EXT  
 Larks Miss Bando 74A  
 #Alberda Traveler 416  
 Blackcap 109 of Mc Cumber

CE	BW	WW	YW	Milk	Dam's Production
3	2.2	66	111	27	6/97

If you want to talk about the foundation genetics that built the Angus breed, this bull could be the poster child. Rito 707, Traveler 8180, Right Time, Emulation EXT, Bando 155, Traveler 6807, New Trend, Rito 054, Viking GD60, Candolier Forever 376 are all included in his ancestry. We think this bull is pretty special. His dam has been a good cow and just flat does her job. She is a legitimate 1200 lb. cow with near perfect structure and is as fertile as they make! She has stuck A.I. first cycle every year and we are excited that she will have a Resource heifer in the spring. Her production ratios are a little misleading as she had a calf that went blind in the pasture two years ago and ratioed 77. We surely could have reported something different, but that is not what we do here. We think this powerhouse pulls it all together: performance, real world functionality and a superior cow family.



**LOT 4 ~ S R RESOURCE 494**



**LOT 3 ~ S R RESOURCE 415**

**LOT 4 S R RESOURCE 494**

BD: 3/31/2014

Reg #: 18012146

Rito 707 of Ideal 3407 7075  
**S A V Resource 1441**  
 S A V Blackcap May 4136

#R R Rito 707  
 Ideal 3407 of 1418 076  
 #S A V 8180 Traveler 004  
 #S A V May 2397

BW	89
ADJ 205	685
WWR	118

S R Alliance 904  
**Lassie 104 of Circle V**  
 Lassie 6199 of Mc Cumber

#Sitz Alliance 6595  
 S R Betty 512  
 MC Cumber 7078 VRD 3108  
 Lassie 331 of Mc Cumber

CE	BW	WW	YW	Milk	Dam's Production
1	3.4	62	108	35	2/121

Here is a calf we are really proud of. He is a little younger, but holds his own as a massively constructed, sound made, herd bull prospect. His dam Lassie 104V had the high selling bull last year that went to Wayne Gerbig of Amidon, N.D. She has a tremendous production record of WR 2/121 and YR 1/114 and once again bred back first cycle A.I. to Resource proving her value as a potential donor prospect. We score each cow for udder quality and disposition at calving time and she was right at the top scoring 9 out of 10 for both udder quality and disposition. He may be a bit younger, but takes a back seat to no bull in this offering. 3/4 brother to Lots 10 and 11.



Sitz Alliance 6595 • Maternal Grandsire



OCC Emblazon 854E • Maternal Great Grandsire

**LOT 5 ~ S R RESOURCE 441**

**LOT 5**

**S R RESOURCE 441**

BD: 3/12/2014

Reg #: 18012193

Rito 707 of Ideal 3407 7075  
**S A V Resource 1441**  
 S A V Blackcap May 4136

#R R Rito 707  
 Ideal 3407 of 1418 076  
 #S A V 8180 Traveler 004  
 #S A V May 2397  
 #Sitz Traveler 8180  
 #Sitz Barbaramere Jet 2698  
 #O C C Emblazon 854E  
 #M H Polly 817

BW	96
ADJ 205	670
WWR	116

#Sitz Alliance 6595  
**S R Polly 804**  
 #SR Polly 323

CE	BW	WW	YW	Milk	Dam's Production
-2	4.3	65	109	33	5/114

Certainly one of the best calves we have raised to date! 441 has caught the eye of everyone that has looked through the bull pen and is one of our favorites. He ties profitable traits together well, with the maternal ancestry to back it up. His productive donor dam has WR 5/114 and stems from the Polly cow family at Van Dyke Angus in MT. You could say he has a historical pedigree of notable A.I. sires going back seven generations. Pedigree reads SAV Resource, Alliance 6595, Emblazon 854E, Traveler 9929, Rito 2100, PS Power Play, Schearbrook Shoshone and Rito 149. We kept 804 open this winter and have been flushing her. We will have four full siblings to 441 this spring and will put in roughly 50 embryos out of her. Masculine, long, stout, massive, correct and functional is how I describe this herd bull prospect. Pathfinder granddam, Pathfinder great granddam.



**LOT 6 ~ S R RESOURCE 448**

**LOT 6**

**S R RESOURCE 448**

BD: 3/14/2014

Reg #: 18012139

Rito 707 of Ideal 3407 7075  
**S A V Resource 1441**  
 S A V Blackcap May 4136

#R R Rito 707  
 Ideal 3407 of 1418 076  
 #S A V 8180 Traveler 004  
 #S A V May 2397  
 #Sitz Alliance 6595  
 21 A R O Lass 824  
 #Sitz Value 7097  
 #S R Travett 408

BW	89
ADJ 205	722
WWR	125

S R Alliance 908  
**S R Travette 177**  
 S R Travett 614

CE	BW	WW	YW	Milk	Dam's Production
1	2.7	68	113	31	2/118

Here is another Resource that ranks right at the top. 448's moderate-framed dam hit one out of the park again and is likely going to do it again this coming year being pregnant with a first cycle A.I. Resource heifer. Her production of 2/118 is top-notch for her age group all the while having superior fertility that we expect and the phenotype to go along as well. She scored a 9 out of 10 for both udder quality and disposition. He brings to the table natural muscle shape, fleshing ability, volume and base width.



Cooper is looking at embryos that Lot 5's dam produced last spring.





**LOT 7 ~ S R THUNDER 407**



*Connealy Thunder • Sire*



*S A V 8180 Traveler 004  
Maternal Great Grandsire*



*21AR Outfitter 6032  
Maternal Grandsire*

**LOT 7 S R THUNDER 407**

BD: 3/6/2014

Reg #: 18021626

#Baldridge Kaboom K243 KCF  
**Connealy Thunder**  
#Parka of Conanga 241  
  
#21AR Outfitter 6032  
**S R Eldorene 966**  
#S R Eldorene 604

#Jauer 353 Traveler 589 27  
Pleasanta of Conanga 736  
#Bon View Bando 598  
Partina of Conanga 6237  
#O C C Magnitude 805M  
21AR Sara E802  
#S A V 8180 Traveler 004  
M H Eldorene 712

<b>BW</b>	75
<b>ADJ 205</b>	657
<b>WWR</b>	113

CE	BW	WW	YW	Milk	Dam's Production
5	-0.2	51	91	25	4/102

Recommended for use on heifers. This calving-ease bull is likely the best Thunder we have raised. He offers a different pedigree and is not related to many of the calving-ease options out there. His phenotype, backed by his cow family, and individual performance make him one of the unique individuals in this sale. His dam has done a nice job and is one of the cows that is easy to find in the pasture and scores near the top for udder quality and disposition. His deep-bodied, easy-keeping, Pathfinder granddam is a daughter of our productive foundation Eldorene 712 cow. A maternal brother was selected by Reich Angus of Zap, N.D., as a high seller in our 2012 sale.

**LOT 8 S R THUNDER 452**

BD: 3/15/2014

Reg #: 18021592

#Baldridge Kaboom K243 KCF  
**Connealy Thunder**  
#Parka of Conanga 241  
  
#GDAR Game Day 449  
**S R Lucy 268**  
S R Lucy 963

#Jauer 353 Traveler 589 27  
Pleasanta of Conanga 736  
#Bon View Bando 598  
Partina of Conanga 6237  
#Boyd New Day 8005  
#G D A R Miss Wix 474  
#Sitz Alliance 6595  
M H Lucy 761

<b>BW</b>	69
<b>ADJ 205</b>	633
<b>WWR</b>	113

CE	BW	WW	YW	Milk	Dam's Production
10	-0.5	50	92	27	1/113

Recommended for use on heifers. If you want a sleep-all-night heifer bull that will still give you some punch in the fall, check out this guy. A definite time-tested maternal and calving-ease pedigree with Thunder, Game Day, Alliance 6595 and Emulation EXT he will also leave you with a set of females you can build a cowherd on. This middle-of-March-born calf weaned off well ratioging 113 as his mother's first calf. Muscle shape, internal capacity and style best describe this calving-ease prospect.



## OUR LONG-TERM COMMITMENT AND VISION FOR YOUR PROFITABILITY

True profitability in the beef business is driven by cattle that can do more with less.

As your seedstock provider, we want your operation to be profitable and sustainable for generations – regardless of the market. That is why we require our stock to thrive in a Northern Plains, grass-based environment with minimal supplementation. They must do more with less.

Strommen Ranch cows must calve annually and wean a calf that is a high percentage of its dam's bodyweight. They must also possess the basic phenotypic traits to cover country, breed on time, have the smarts and mothering ability to do it on their own, all the while performing under the conditions that Mother Nature has dealt us. We select for fertility, longevity, sound structure and realistic performance in the cowherd.

Strommen Ranch calves grow out on grass. We DO NOT creep feed. It would be easy for us to achieve 800-900 lb. weaning weights if we used creep feed, but we choose to run our seedstock operation like a real-world commercial operation. We want your calves to perform in your environment – that's why we ask our bulls and females to shine in a similar one. We are proud of the fact that for 8 years straight, we've increased weaning weights, while maintaining mature cow size and placing downward pressure on our input costs. We are continually asking our cattle to do more with less.

Similarly, in our development program we also begin with the end in mind. We don't need to know which calf can eat the most – we need to know which calf can do the most in his natural environment. This helps us protect your investment in a Strommen Ranch bull. In order for you to have a bull that lasts and has lon-



gevity, he should not be pushed at an early age. It is our intention to identify optimum gains. We hope to have allowed the bulls to express their genetic potential without pushing so much energy through them that feet, hock or liver damage occur. Our ultimate goal is to have the bulls range-ready, sound-footed and ready to go to work for you.

As your seedstock source, we are fully committed to producing the type of cattle that will positively impact your bottomline. Having traveled extensively as an A.I. rep. for Genex and looking at cowherds throughout the region, I believe that cattle with phenotypic appeal, fleshing ability and fertility are the most profitable. Cattle that breed early in the cycle, are structurally sound and can raise big calves efficiently in a practical environment with minimal inputs are the kind of cattle we produce and believe will have a positive impact on your bottomline now and into the future.

#### **A BALANCING ACT:**

Chasing fads or using one-trait selection is a really good way to hurt the important traits we all need to survive in the beef industry. The important traits every cowherd needs are fertility, longevity and fleshing ability, as well as sound feet, legs and udders. It is our intention to breed cattle that excel at certain traits, but not at the expense of other important traits.

- We want fleshing ability, but not at the expense of fertility.
- We want cattle to perform, but not to an extreme that it diminishes the cows' ability to breed back and maintain her condition in our environment.
- We want to continually improve weaning weights, but not with the expense of added input cost.
- We want cattle with acceptable carcass merit, but not at the expense of maternal traits.
- We select cattle that are moderate in frame, but we demand that they perform and have ample muscle.

This all sounds like a perfect game plan, but is really a juggling act of sorts. We do extensive research and appraise lots of cattle so that we can make the best informed decision about the genetics we bring in to keep our program moving in the right direction.

By taking a balanced approach to genetic improvement, we hope to manage our risk – and help you manage yours.



**LOT 9 ~ S R RESOURCE 449**

**LOT 9 S R RESOURCE 449**

BD: 3/14/2014 Reg #: 18012168

Rito 707 of Ideal 3407 7075  
**S A V Resource 1441**  
 S A V Blackcap May 4136

#R R Rito 707  
 Ideal 3407 of 1418 076  
 #S A V 8180 Traveler 004  
 #S A V May 2397  
 O C C Focus 813F  
 O C C Blackbird 736K  
 Oak Hollow 7709 of 1318 1118  
 Farview Lady Blue 2228

BW	83
ADJ 205	704
WWR	122

O C C Paxton 730P  
**S R Lady Blue 118**  
 #S R Lady Blue 631

CE	BW	WW	YW	Milk	Dam's Production
5	1.3	68	109	29	2/121

We like bulls that look like bulls from the day they are born and 449 has Angus breed character all over. He ranks second for the calf crop ratioing 122 at weaning. His productive dam has a BR 2/97, a WR 2/121 and is well on her way to Pathfinder status. She stuck A.I. and will deliver a Resource heifer in March. This bull will sire calves that mash the scales down and leave you easy-keeping, sound-structured females that will help to improve a ranches bottomline. Lady Blue 631 his Pathfinder granddam has a BR 7/98 and WR 7/106 and we have kept and retain every daughter she has produced.



**LOT 11 ~ S R RESOURCE 428**

**LOT 10 S R RESOURCE 425**

BD: 3/9/2014 Reg #: 18012149

Rito 707 of Ideal 3407 7075  
**S A V Resource 1441**  
 S A V Blackcap May 4136

#R R Rito 707  
 Ideal 3407 of 1418 076  
 #S A V 8180 Traveler 004  
 #S A V May 2397

BW	87
ADJ 205	651
WWR	112

S R Alliance 904  
**Miss Wix 114 of Circle V**  
 Miss Wix 667 of Mc Cumber

#Sitz Alliance 6595  
 S R Betty 512  
 MC Cumber 6122 Equator 419  
 #Miss Wix 2043 of Mc Cumber

CE	BW	WW	YW	Milk	Dam's Production
-1	3.2	65	110	30	2/104

425 is a 3/4 brother to Lots 4 & 11. This mating really worked. The 904 daughters are ratioing 105 as a group. They breed early to A.I. service and are real nice, moderate-framed cows that raise big calves. Miss Wix 114 scores a 9 out of 10 for both udder and disposition and has bred A.I. coming with a March Resource heifer.

**LOT 11 S R RESOURCE 428**

BD: 3/10/2014 Reg #: 18012161

Rito 707 of Ideal 3407 7075  
**S A V Resource 1441**  
 S A V Blackcap May 4136

#R R Rito 707  
 Ideal 3407 of 1418 076  
 #S A V 8180 Traveler 004  
 #S A V May 2397

BW	89
ADJ 205	644
WWR	111

S R Alliance 904  
**Miss Wix 145 of Circle V**  
 Miss Wix 6227 of Mc Cumber

#Sitz Alliance 6595  
 S R Betty 512  
 MC Cumber 8005 New Day 455  
 Miss Wix 4179 of Mc Cumber

CE	BW	WW	YW	Milk	Dam's Production
0	3.7	59	104	32	2/111

A stand out Resource son that the ranchers will like. He is big hipped, long bodied and performed well. He has the credentials to sire calves that carry extra weight in the fall and the females will be the kind you can rely on to be efficient, moderate beef makers. His dam stems from the productive Miss Wix cow family and scored 9 out of 10 for both udder quality and disposition and will calve this spring to her A.I. date again with a Resource bull.



**LOT 12 ~ S R THUNDER 414**

**LOT 12 S R THUNDER 414**

BD: 3/8/2014 Reg #: 18021630

#Baldridge Kaboom K243 KCF  
**Connealy Thunder**  
 #Parka of Conanga 241

#Jauer 353 Traveler 589 27  
 Pleasanta of Conanga 736  
 #Bon View Bando 598  
 Partina of Conanga 6237  
 #Paramont Ambush 2172  
 R C Anita T Bando 918903  
 O C C Broadside 876B  
 Miss Lodge Pole 932

#B C C Bushwacker 41-93  
**S R Clova Pride 725**  
 M H Clova Pride 834

BW	81
ADJ 205	569
WWR	98

CE	BW	WW	YW	Milk	Dam's Production
8	-0.3	46	78	21	6/100

Recommended for use on heifers. Longevity in a cowherd is essential to profitability and the cow family behind this calving-ease prospect is true to that. This long-spined, square-hipped, gentle-natured bull comes from a proven pedigree full of female makers. With Thunder, Bushwacker and Broadside in his ancestry, Lot 12 is sure to leave you with a good set of females. His prolific granddam weaned a nice Thunder heifer last year at 16 years of age and his productive and fertile dam has stuck A.I. to every straw we have used on her (7 straws, 7 calves) and will have a first cycle Thunder heifer in March. A maternal brother is working for Curt Richard of Rolette, N.D., and Don Pankratz of Frasier, Mont.

**LOT 14 S R THUNDER 416**

BD: 3/8/2014 Reg #: 18021595

#Baldridge Kaboom K243 KCF  
**Connealy Thunder**  
 #Parka of Conanga 241

#Jauer 353 Traveler 589 27  
 Pleasanta of Conanga 736  
 #Bon View Bando 598  
 Partina of Conanga 6237  
 #Boyd New Day 8005  
 #G D A R Miss Wix 474  
 Rockin Horse Tailor Made 456  
 K N M Rachel 430

#GDAR Game Day 449  
**S R Rachel 222**  
 K N M Rachel 070

BW	74
ADJ 205	578
WWR	104

CE	BW	WW	YW	Milk	Dam's Production
10	-0.4	43	80	26	1/104

Recommended for use on heifers. This smooth-made, attractive bull sports a three generation calving-ease pedigree, with three maternal cow makers in his ancestry. He will be a no-worries, calving-ease bull, and you will want to retain his daughters. His dam scores right at the top for udder quality and disposition.



**MH Clova Pride 832 • Granddam of Lots 12 and 15**

**LOT 13 S R RESOURCE 421**

BD: 3/9/2014 Reg #: 18012173

Rito 707 of Ideal 3407 7075  
**S A V Resource 1441**  
 S A V Blackcap May 4136

#R R Rito 707  
 Ideal 3407 of 1418 076  
 #S A V 8180 Traveler 004  
 #S A V May 2397  
 #Hero 6267 of R R 2418  
 Sinclair Lady 0C4 4465  
 Sinclair Mt Time 4P88  
 DR Mabel 2928

Sinclair Super Hero 8RD2  
**DR Mabel 198**  
 DR Mabel 695

BW	78
ADJ 205	651
WWR	112

CE	BW	WW	YW	Milk	Dam's Production
7	0	61	98	25	2/96

Recommended for use on heifers. A calving-ease option out of the Resource pen. His good footed Hero-bred dam has a history of light birth and scores a 9 for udder quality and 8 for disposition. This heavy muscled bull is strong topped and travels freely. The dam stems from the Mabel cow family and has stuck to her 1st straw A.I. service every year. A bit different outcross pedigree for most ranchers with this guy.

**LOT 15 S R REVIVAL 4100**

BD: 4/1/2014 Reg #: 18010832

Sitz Dash 10277  
**Ox Bow Revival 1313**  
 Ox Bow Manor 933

#Sitz Upward 307R  
 Sitz Everelda Entense 2665  
 #K C F Bennett Total  
 #Ox Bow Manor 7105  
 #Boyd New Day 8005  
 #G D A R Miss Wix 474  
 O C C Broadside 876B  
 Miss Lodge Pole 932

#GDAR Game Day 449  
**S R Clova Pride 226**  
 M H Clova Pride 834

BW	69
ADJ 205	617
WWR	111

CE	BW	WW	YW	Milk	Dam's Production
5	0.1	47	83	20	1/111

Recommended for use on heifers. Another calf that stems from the prolific Clova Pride cow family. His Game Day dam scored a perfect 10 for udder quality. We are excited to calve the first Revival daughters. Smooth made and attractive best describe this calving-ease bull. Multiple generations of vigor at calving time, a trait that isn't measured. More live calves equal more profit.





**H A IMAGE MAKER 0415**

**LOT 18 S R REVIVAL 422**

BD: 3/9/2014 Reg #: 18019770

Sitz Dash 10277  
**Ox Bow Revival 1313**  
 Ox Bow Manor 933  
 Benfield Substance 8506  
**S R Blackbird 204**  
 Glacial 8646 Blackbird 161X

#Sitz Upward 307R  
 Sitz Everelda Entense 2665  
 #K C F Bennett Total  
 #Ox Bow Manor 7105  
 #H A Image Maker 0415  
 Benfield Edella 1105  
 Sitz Alliance 8646  
 Glacial Blackbird 822H 27L

BW	80
ADJ 205	672
WWR	120

CE	BW	WW	YW	Milk	Dam's Production
5	1.1	54	89	25	1/120

Recommended for use on heifers. This long, smooth-made bull is backed by three generations of calving-ease with Revival, Substance and Alliance 8646. His heavy milking dam had high marks for udder quality. He has a small birthmark on his face.

**LOT 20 S R THUNDER 454**

BD: 3/15/2014 Reg #: 18021632

#Baldridge Kaboom K243 KCF  
**Connealy Thunder**  
 #Parka of Conanga 241  
 #N Bar Emulation EXT  
**S R Enchantress 619**  
 L A Miss Enchantress 021

#Jauer 353 Traveler 589 27  
 Pleasanta of Conanga 736  
 #Bon View Bando 598  
 Partina of Conanga 6237  
 #Emulation N Bar 5522  
 N Bar Primrose 2424  
 #Rito 054 G D A R  
 #L A R Miss Lovana 628

BW	87
ADJ 205	613
WWR	106

CE	BW	WW	YW	Milk	Dam's Production
6	0.4	42	76	26	7/104

If great females is what you emphasize in your program then don't look past this maternally well-bred bull. With Angus breed legends like Thunder, Emulation EXT, Rito 054 and Lovana in his pedigree, Lot 20 is sure to leave you a fertile, functional and profitable set of daughters. Dam has a BR 7/97 and WR 7/104. Maternal brother working for Todd Finke of Berthold, N.D., Blaine Hopfauf of Mandan, N.D., Scott Stutrud of Towner, N.D., and Lynn Diebert of Herried, S.D.



Cassidy kept a watchful eye on Dr. Bierman's ultrasound screen this fall.

**LOT 16 S R IMAGE MAKER 4205**

BD: 3/11/2014 Reg #: 18015735

#Hero 6267 of R R 2418  
**H A Image Maker 0415**  
 H A Rito Blackcap 9038  
 #O C C Bonanza 880B  
**Sitz Barbaramere Nell 798**  
 Sitz Barbaramere Nell 2075

#R R Hero 6267  
 R R Everelda Entense 0413  
 H 96 Rito 2100 7371  
 H 96 Blackcap 3835  
 #N Bar Emulation EXT  
 #Erica Lassie of R R 2373  
 #Sitz Traveler 8180  
 Sitz Barbaramere Nell 2219

BW	89
ADJ 205	662
WWR	ET

CE	BW	WW	YW	Milk	Dam's Production
2	2.2	54	91	25	4/102

**LOT 17 S R IMAGE MAKER 4204**

BD: 3/5/2014 Reg #: 18015734

CE	BW	WW	YW	Milk	Dam's Production	BW	72
2	2.2	54	91	25	4/102	ADJ 205	575
						WWR	ET

Recommended for use on heifers. Flush brothers by the Pathfinder calving-ease sire HA Image Maker and backed by a strong maternal pedigree in Bonanza and Traveler 8180. Take these two brothers home and turn them out with a group of heifers and retain the daughters – that is how you build a cowherd. Thick, deep, smooth-made bulls with a proven pedigree to sire calves that are active at birth and pay the bills in the fall. A maternal brother is seeing use for Rick Gross at Shields, N.D.

**LOT 19 S R REVIVAL 470**

BD: 3/21/2014 Reg #: 18010824

Sitz Dash 10277  
**Ox Bow Revival 1313**  
 Ox Bow Manor 933  
 O C C Paxton 730P  
**S R Polly 254**  
 #S R Polly 717

#Sitz Upward 307R  
 Sitz Everelda Entense 2665  
 #K C F Bennett Total  
 #Ox Bow Manor 7105  
 O C C Focus 813F  
 O C C Blackbird 736K  
 #B C C Bushwacker 41-93  
 #SR Polly 323

BW	75
ADJ 205	645
WWR	116

CE	BW	WW	YW	Milk	Dam's Production
7	1	56	91	21	1/116

Recommended for use on heifers. The Polly cow family is very productive and Lot 19's nice-tempered, good-structured mother is the same. This long-spined, powerfully built, calving-ease prospect is one that will catch your eye. There are three generations of proven Pathfinder dams behind his mother.

**LOT 21 S R RESOURCE 440**

BD: 3/12/2014 Reg #: 18012194

Rito 707 of Ideal 3407 7075  
**S A V Resource 1441**  
 S A V Blackcap May 4136  
 #O C C Great Plains 943G  
**S R Dorothy 968**  
 Ideal 4637 of 452 285

#R R Rito 707  
 Ideal 3407 of 1418 076  
 #S A V 8180 Traveler 004  
 #S A V May 2397  
 #N Bar Emulation EXT  
 Dixie Erica of C H 1019  
 Ideal 0452 OF 5439 467  
 Ideal 285 of 049 5486

BW	97
ADJ 205	587
WWR	101

CE	BW	WW	YW	Milk	Dam's Production
-4	4.1	57	105	23	4/96

Resource crossed on the EXT bred cattle has been a great cross. This massively constructed bull shows a lot of breed character, walks out wide and has muscle shape. His dam is a high volume grass converter that has perfect feet and scored high on udder quality and disposition. The cowboys will find this rugged-made, big-bodied beef bull.



**LOT 22 ~ S R RESOURCE 444**



**S R Burgette 031 • Dam of Lot 22**

**LOT 22 S R RESOURCE 444**

BD: 3/13/2014 Reg #: 18012182

Rito 707 of Ideal 3407 7075  
**S A V Resource 1441**  
 S A V Blackcap May 4136

O C C Paxton 730P  
**S R Burgette 031**  
 S R Burgette 839

#R R Rito 707  
 Ideal 3407 of 1418 076  
 #S A V 8180 Traveler 004  
 #S A V May 2397  
 O C C Focus 813F  
 O C C Blackbird 736K  
 #Sitz Alliance 6595  
 #Farview Burgette 4228

BW	92
ADJ 205	638
WWR	110

CE	BW	WW	YW	Milk	Dam's Production
1	3.6	65	109	29	3/111

Thick made, moderate framed and a beef wagon! This bull may be one of the sleepers in this sale. His dam Burgette 031 "the cover cow" is one of the biggest middled and easiest keeping females on the ranch. She has bred every year, first cycle, first straw, and is due again in March with a Resource heifer. She will make Pathfinder status this year. He is a big-bodied, grass-converting machine. Don't over look this bull, he is good.

**LOT 24 S R THUNDER 423**

BD: 3/9/2014 Reg #: 18021597

#Baldridge Kaboom K243 KCF  
**Connealy Thunder**  
 #Parka of Conanga 241

#Basin Rainmaker 814Z  
**S R Sky Tee Lass 201**  
 S R Sky Tee Lass 708

#Jauer 353 Traveler 589 27  
 Pleasanta of Conanga 736  
 #Bon View Bando 598  
 Partina of Conanga 6237  
 #Basin Rainmaker D S 380U  
 #Basin Pamella 676X  
 #Larks Canyon 74D4  
 S R Sky Tee Lass 518

BW	72
ADJ 205	553
WWR	99

CE	BW	WW	YW	Milk	Dam's Production
9	-0.9	42	78	25	1/99

Recommended for use on heifers. Heifer bull buyers take notice! Four generations of calving-ease genetics stacked together. Thunder, Rainmaker, Larks Canyon and Emblazon make a pedigree filled with calving-ease and maternal function.



**LOT 23 S R THUNDER 457**

BD: 3/16/2014 Reg #: 18021619

#Baldridge Kaboom K243 KCF  
**Connealy Thunder**  
 #Parka of Conanga 241

O C C Tremendous 619T  
**Miss Wix 1165 of Mc Cumber**  
 Miss Wix 986 OF Mc Cumber

#Jauer 353 Traveler 589 27  
 Pleasanta of Conanga 736  
 #Bon View Bando 598  
 Partina of Conanga 6237  
 #O C C Emblazon 854E  
 O C C Dixie Erica 960H  
 Sitz Rainmaker 6536  
 Miss Wix 6117 of Mc Cumber

BW	79
ADJ 205	563
WWR	97

CE	BW	WW	YW	Milk	Dam's Production
9	-0.4	47	81	24	2/101

Recommended for use on heifers. Smooth shouldered, attractive and calving-ease. Live vigorous calves are needed for profitability and this bull will give you them. He stacks the calving-ease genetics of Thunder with Tremendous and Rainmaker.

**LOT 25 S R RESOURCE 402**

BD: 3/1/2014 Reg #: 18012171

Rito 707 of Ideal 3407 7075  
**S A V Resource 1441**  
 S A V Blackcap May 4136

O C C Paxton 730P  
**S R Dorothy Ideal 102**  
 S R Dorothy 972

#R R Rito 707  
 Ideal 3407 of 1418 076  
 #S A V 8180 Traveler 004  
 #S A V May 2397  
 O C C Focus 813F  
 O C C Blackbird 736K  
 S R Canyon 703  
 Ideal 266 of F506 0360

BW	76
ADJ 205	554
WWR	96

CE	BW	WW	YW	Milk	Dam's Production
8	0.8	55	96	26	2/102

Recommended for use on heifers. Another of the Resource bulls that we think could be used on heifers. His dam is a Paxton daughter that has a BR 2/96 and WR 2/102 and goes back to Larks Canyon.



*We are thankful for local neighbors who sell us straw. Straw is a major part of our cowherd's diet, especially on dry years.*



**LOT 26 ~ S R RESOURCE 406**

**LOT 27 S R RESOURCE 409**

BD: 3/6/2014 Reg #: 18012174

Rito 707 of Ideal 3407 7075  
**S A V Resource 1441**  
 S A V Blackcap May 4136

#R R Rito 707  
 Ideal 3407 of 1418 076  
 #S A V 8180 Traveler 004  
 #S A V May 2397

BW	78
ADJ 205	645
WWR	111

Sinclair Super Hero 8RD2  
**DR Blackbird 186**  
 DR Blackbird 823 of R R 0468

#Hero 6267 of R R 2418  
 Sinclair Lady 0C4 4465  
 #Sinclair Added Value 5PV44  
 DR BLACKBIRD of R R 0468 522

CE	BW	WW	YW	Milk	Dam's Production
5	0.6	64	101	28	2/109

Recommended for use on heifers. Here is a ¾ brother to Lot 13 that is truly a heifer bull prospect. His Hero dam records a BR of 2/98 along with a productive WR of 2/109. He also shows one of the nicest balanced EPD packages in the offering and his dam has an udder score of 9 with a disposition score of 8. A maternal brother is working for Gene Kahl of Selfridge, N.D.



**S R Betty 820 • Dam of Lot 30 with her 2013 heifer calf.**



**LOT 30 ~ S R RESOURCE 4104**

**LOT 26 S R RESOURCE 406**

BD: 3/6/2014 Reg #: 18012148

Rito 707 of Ideal 3407 7075  
**S A V Resource 1441**  
 S A V Blackcap May 4136

#R R Rito 707  
 Ideal 3407 of 1418 076  
 #S A V 8180 Traveler 004  
 #S A V May 2397

BW	88
ADJ 205	552
WWR	95

#Sinclair Extra 4X13  
**Miss Wix 122 of Circle V**  
 Miss Wix 683 of Mc Cumber

#N Bar Emulation EXT  
 N Bar Lady Ida S C C 2P37  
 #Sitz Tradition RLS 8702  
 #Miss Wix 3014 of Mc Cumber

CE	BW	WW	YW	Milk	Dam's Production
0	3.4	53	95	25	2/95

This bull has the perfect blend between performance and maternal. He mixes Resource with the maternal greats in Extra 4X13 and Sitz Tradition. He will work in many situations, if you are looking to keep females or add some power.

**LOT 28 S R RESOURCE 462**

BD: 3/17/2014 Reg #: 18012189

Rito 707 of Ideal 3407 7075  
**S A V Resource 1441**  
 S A V Blackcap May 4136

#R R Rito 707  
 Ideal 3407 of 1418 076  
 #S A V 8180 Traveler 004  
 #S A V May 2397

BW	89
ADJ 205	576
WWR	99

#Sitz Alliance 6595  
**#S R Sara 808**  
 S R Sara 522

#Sitz Traveler 8180  
 #Sitz Barbaramere Jet 2698  
 #O C C Emblazon 854E  
 21 A R Sara 802A

CE	BW	WW	YW	Milk	Dam's Production
3	2.8	57	100	28	5/104

The Alliance daughters we have in our herd crossed well to Resource. Profitability comes from an efficient, fertile and productive cowherd and this cow defines those goals. She is a moderate-framed 1,250 lb. cow that has stuck to her A.I. service every year and she has attained Pathfinder status. She is due with a Resource bull in March. She scores a 9 out of 10 for udder quality and shows her productiveness with a WR of 5/104.

**LOT 29 S R REVIVAL 492**

BD: 3/31/2014 Reg #: 18010830

Sitz Dash 10277  
**Ox Bow Revival 1313**  
 Ox Bow Manor 933

#Sitz Upward 307R  
 Sitz Everelda Entense 2665  
 #K C F Bennett Total  
 #Ox Bow Manor 7105

BW	95
ADJ 205	590
WWR	102

#21AR Outfitter 6032  
**S R Dorothy Ideal 825**  
 Ideal 4535 of 7451 5467

#O C C Magnitude 805M  
 21AR Sara E802  
 #Ideal 7451 of 8103 4465  
 Ideal 5467 of 6807 7211

CE	BW	WW	YW	Milk	Dam's Production
-3	2.6	49	86	21	5/100

Revival has done a nice job for us and this bull is no exception to that. He is a long-spined big topped bull that has an attractive profile. We are excited to calve the Revival daughters as we think they fit into what our goals are as seedstock producers.

**LOT 30 S R RESOURCE 4104**

BD: 4/3/2014 Reg #: 18012191

Rito 707 of Ideal 3407 7075  
**S A V Resource 1441**  
 S A V Blackcap May 4136

#R R Rito 707  
 Ideal 3407 of 1418 076  
 #S A V 8180 Traveler 004  
 #S A V May 2397

BW	91
ADJ 205	604
WWR	104

#Sitz Alliance 6595  
**S R Betty 820**  
 S R Betty 417

#Sitz Traveler 8180  
 #Sitz Barbaramere Jet 2698  
 #O C C Emblazon 854E  
 M H Betty 916

CE	BW	WW	YW	Milk	Dam's Production
2	2.9	60	103	27	5/101

Don't overlook this younger Resource. He brings to the table one of the better EPD packages on the sale and his dam is one of the cows you'd love to have a bunch of. She is one of the easiest fleshing cows we have ever owned and she is bred for a 1st cycle A.I. bull calf out of Resource.





S R Beauty 816 • Dam of Lot 31 with her 2013 calf.



V D A R Beauty 50 • Granddam of Lot 31

**LOT 31 ~ S R RESOURCE 463**

**LOT 31 S R RESOURCE 463**

BD: 3/18/2014 Reg #: 18012188

Rito 707 of Ideal 3407 7075  
**S A V Resource 1441**  
 S A V Blackcap May 4136

#Sitz Alliance 6595  
**S R Beauty 816**  
 M H Beauty 941

#R R Rito 707  
 Ideal 3407 of 1418 076  
 #S A V 8180 Traveler 004  
 #S A V May 2397  
 #Sitz Traveler 8180  
 #Sitz Barbaramere Jet 2698  
 Rito 9Q4 of 1H1 Sasquatch  
 V D A R Beauty 50

BW	102
ADJ 205	590
WWR	102

CE	BW	WW	YW	Milk	Dam's Production
-4	4.6	56	99	28	5/95

The cowboys will find this bull. He is a rugged-made, deep, thick rancher's bull that is tight sheathed and big nutted. His dam is an Alliance 6595 daughter and goes back to our foundation Beauty 50 cow. A maternal brother is working for Ron Erickson of Columbus, N.D.

**LOT 32 S R RESOURCE 487**

BD: 3/29/2014 Reg #: 18012169

Rito 707 of Ideal 3407 7075  
**S A V Resource 1441**  
 S A V Blackcap May 4136

O C C Paxton 730P  
**S R Lucy 106**  
 S R Lucy 719

#R R Rito 707  
 Ideal 3407 of 1418 076  
 #S A V 8180 Traveler 004  
 #S A V May 2397  
 O C C Focus 813F  
 O C C Blackbird 736K  
 #B C C Bushwacker 41-93  
 M H Lucy 761

BW	81
ADJ 205	527
WWR	91

CE	BW	WW	YW	Milk	Dam's Production
4	2.3	57	97	23	2/96

If you are wanting to put together a bunch of Resource sons, here is another opportunity. His dam is a functional Paxton daughter that goes back to our 761 cow. 761 stayed in production until she was 15 years old. Lot 32's dam has a maternal brother working for Steve Gilge of Rolette, N.D.

**LOT 33 S R RESOURCE 442**

BD: 3/13/2014 Reg #: 18012186

Rito 707 of Ideal 3407 7075  
**S A V Resource 1441**  
 S A V Blackcap May 4136

#Sitz Alliance 6595  
**S R Lucy 963**  
 M H Lucy 761

#R R Rito 707  
 Ideal 3407 of 1418 076  
 #S A V 8180 Traveler 004  
 #S A V May 2397  
 #Sitz Traveler 8180  
 #Sitz Barbaramere Jet 2698  
 #N Bar Emulation EXT  
 V D A R Lucy 336

BW	100
ADJ 205	589
WWR	102

CE	BW	WW	YW	Milk	Dam's Production
-3	5	56	100	29	4/104

This Resource son is owned by our kids, Cassidy, Cooper and Clint. Lucy 963 was their choice out of the bred heifer pen in 2011 and a good choice they made. She has never missed her A.I. date and is due again in March with a Thunder bull calf. I will mention that when she was pregnancy ultrasounded, three extra pairs of eyes were patiently watching the computer screen and when Dr. Bierman announced it would be a bull calf, high fives were flying around! The kids have sold maternal brothers to Duane Feiring of McHenry, N.D., and Waylon Tomac of Mandan, N.D.



Lot 33 is owned by Cassidy, Cooper & Clint.

Videos of the bulls are available on our website

[www.StrommenRanch.com](http://www.StrommenRanch.com)

# LOT 34 S R RESOURCE 429

BD: 3/10/2014

Reg #: 18012205

Rito 707 of Ideal 3407 7075  
**S A V Resource 1441**  
 S A V Blackcap May 4136

#R R Rito 707  
 Ideal 3407 of 1418 076  
 #S A V 8180 Traveler 004  
 #S A V May 2397  
 #D H D Traveler 6807  
 Alberda Queen Kimberly 222  
 #Rito 054 G D A R  
 Blackcap 013 of Mc Cumber

BW	92
ADJ 205	551
WWR	95

#Alberda Traveler 416  
**S R Blackcap 509**  
 Blackcap 109 of Mc Cumber

CE	BW	WW	YW	Milk	Dam's Production
1	3.9	49	89	29	8/102

Old time pedigree here with a productive maternal lineage behind him. Dam has been a productive cow that has as much capacity and volume as any cow on the ranch. Maternal brothers have seen use for John Knudson of Taylor, N.D., Kim Shade of Medora, N.D., and Jeff Hornbacher of Menoken, N.D.



# LOT 35 S R RESOURCE 480

BD: 3/28/2014

Reg #: 18012198

Rito 707 of Ideal 3407 7075  
**S A V Resource 1441**  
 S A V Blackcap May 4136

#R R Rito 707  
 Ideal 3407 of 1418 076  
 #S A V 8180 Traveler 004  
 #S A V May 2397  
 #N Bar Emulation EXT  
 Larks Miss Bando 74A  
 #B C C Bushwacker 41-93  
 M H Lucy 540

BW	105
ADJ 205	576
WWR	99

#Larks Canyon 74D4  
**#S R Lucy 704**  
 S R Lucy 511

CE	BW	WW	YW	Milk	Dam's Production
-6	5.8	58	103	27	6/107

This is the largest framed Resource we have and he is out of a great Larks Canyon daughter that has made Pathfinder status. His dam shows a tremendous production record of 7/106 and she bred back first cycle A.I. with a Resource heifer. A maternal brother is working for Roger Graner of Huff, N.D.

## FOR OUR VALUED BULL CUSTOMERS, WE OFFER:

- Free feeding after the sale.
- Free delivery.
- Full 90-day breeding season guarantee.
- Freeze branded.
- Fertility tested.
- Bulls that aren't overfed.
- Discounts for volume purchases and repeat buyers
- Your satisfaction is our top priority.

*These proven, balanced, female-makers are the backbone of our cowherd.*



LT BANDWAGON 3105



N BAR EMULATION EXT



OCC EMBLAZON 854E



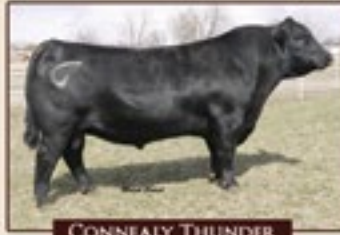
OCC GREAT PLAINS 943G



LEACHMAN RIGHT TIME



GDAR GAME DAY 449



CONNEALY THUNDER



BCC BUSHWACKER 41-93

Our herd dates back to 1942 when Aaron's grandfather, Ernest Strommen, bought his first registered Angus female. His herd consisted of moderate-framed, highly-fertile, low-input cattle that calved with little assistance and produced good milk in a grass-based environment.

This winter we will calve 200 head of Angus females we've selected for their fleshing ability on native range, fertility, longevity and sound udder and leg structure. Our cattle must survive – and thrive – in a low-input, grass-based environment of the Northern Plains.

We have no feed base and choose not to put up feed. Every acre of this ranch is grazed and we purchase all of the supplemental feed we need to get through a typical North Dakota winter. We don't use corn silage or liquid supplements.

This situation has quickly taught us the value of managing our natural resources so that our cattle can graze quality, unharvested forages well into the winter. And it has reinforced the value we place on cattle that successfully convert grass and forage into pounds of beef.

We invite you to join us for our Angus Bull Sale, Feb. 28, 2015 and invite you to next year's sale set for Feb. 27, 2016.



**Aaron & Sheyna Strommen**  
6485 County Road 80, Fort Rice, ND 58554  
Ranch: (701) 445-2020 Aaron's Cell: (701) 290-7983  
[www.StrommenRanch.com](http://www.StrommenRanch.com)



AARON & SHEYNA STROMMEN  
6485 COUNTY ROAD 80  
FORT RICE, ND 58554

PRESORTED  
FIRST-CLASS MAIL  
U.S. POSTAGE PAID  
LivestockDirect  
PERMIT NO. 29



## ANGUS BULL SALE

AT THE RANCH FEB. 28 2015, 3 P.M. FORT RICE, ND

### 35 ANGUS BULLS

- Free feeding after the sale.
- Free delivery.
- Full 90-day breeding-season guarantee.
- Freeze branded.
- Fertility tested.
- Bulls that aren't overfed.
- Discounts for volume purchases and repeat buyers
- Your satisfaction is our top priority.



Ranch: (701) 445-2020 • Aaron's Cell: (701) 290-7983

Videos of the bulls are available online at [www.StrommenRanch.com](http://www.StrommenRanch.com).