

Remote Access Instructions



BT Video Systems (219) 989-6586

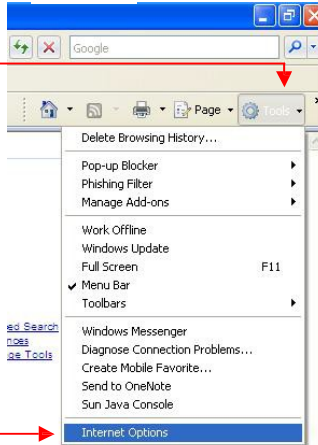


1) Double click Internet Explorer



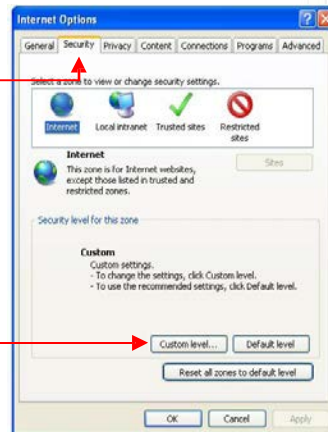
2) At the top right hand corner of the screen click **TOOLS**

3) Then move your mouse to the bottom of the menu and click **Internet Options**



4) Once in the internet options menu click the **Security** tab














5) Then towards the bottom center of the menu click **Custom Level**



6) When you are in the custom level menu click the **Arrow** to scroll down until you see **ActiveX controls and plug-ins**

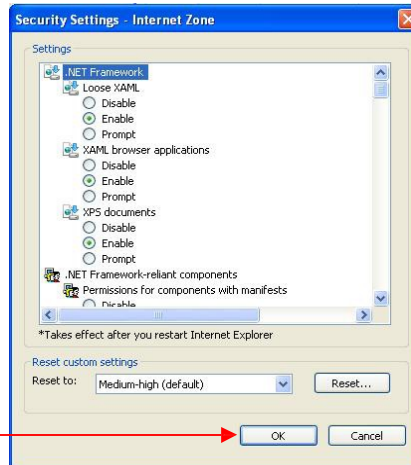


Set the following settings by **clicking** on the options to the left:

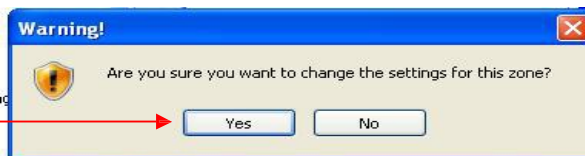
-
-  ActiveX controls and plug-ins
 -  Allow ActiveX Filtering
 - Disable
 - Enable
 -  Allow previously unused ActiveX controls to run without prompt
 - Disable
 - Enable
 -  Allow Scriptlets
 - Disable
 - Enable
 - Prompt
 -  Automatic prompting for ActiveX controls
 - Disable
 - Enable
 -  Binary and script behaviors
 - Administrator approved
 - Disable
 - Enable
 -  Display video and animation on a webpage that does not use ActiveX
 - Disable
 - Enable
 -  Download signed ActiveX controls
 - Disable
 - Enable (not secure)
 - Prompt (recommended)
 -  Download unsigned ActiveX controls
 - Disable (recommended)
 - Enable (not secure)
 - Prompt
 -  Initialize and script ActiveX controls not marked as safe for scripting
 - Disable (recommended)
 - Enable (not secure)
 - Prompt
 -  Only allow approved domains to use ActiveX without prompt
 - Disable
 - Enable
 -  Run ActiveX controls and plug-ins
 - Administrator approved
 - Disable
 - Enable
 - Prompt
 -  Script ActiveX controls marked safe for scripting*
 - Disable
 - Enable
 - Prompt

NOTE: You must scroll down there are 12 activex settings in ALL

8) Once the options are set click **OK**



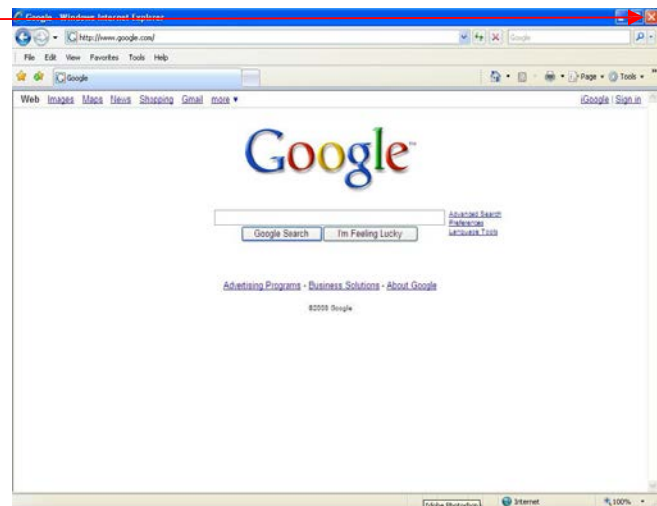
9) A Warning! message will now appear
Click **Yes** to continue



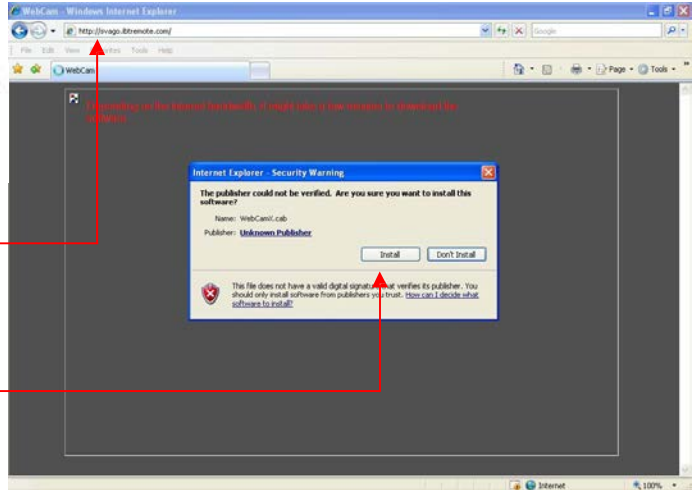
10) Click **OK** to exit the Internet Options
Menu



11) Click the **(X)** to close Internet Explorer



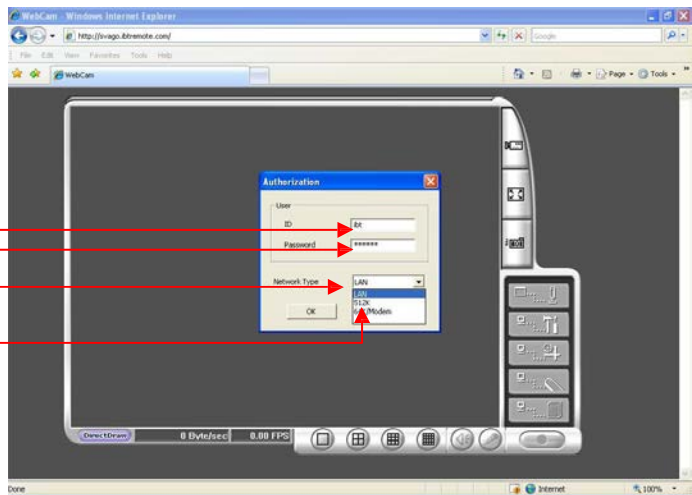
12) Reopen Internet Explorer by clicking



13) Enter the IP address into the **address bar**

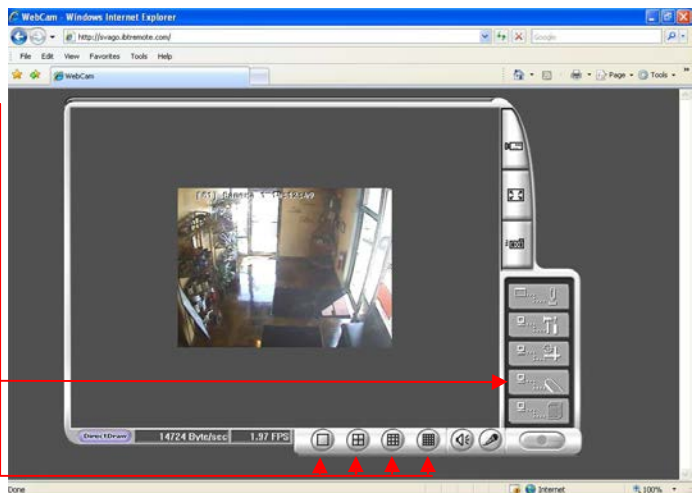
14) When prompted to install the activeX Control Click **Install** to continue

15) Once the activeX controls are downloaded Enter your user **ID** and **Password**



16) Network Type select Either **LAN** or **512K**

17) 1 Camera should appear in the center of the screen use the following **controls** to view multiple cameras



18) To Download **Remote Console** Click Here

**For an instruct how to use Remote Console
Please Call BT Video Systems at
219-989-6586**