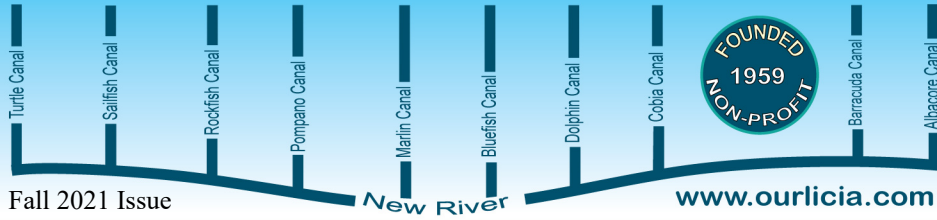


# Lauderdale Isles Civic Improvement Association, Inc.



Fall 2021 Issue

## WOW - What a transformation on Tortugas Lane!

**Congratulations to June Garren Whitney of Tortugas Lane, WOW Award recipient for the month of October.**

taining beds gray, and built a pergola to add more depth and compliment the front of her home. It will surely leave a lasting "WOW" impression.

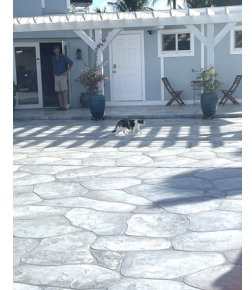
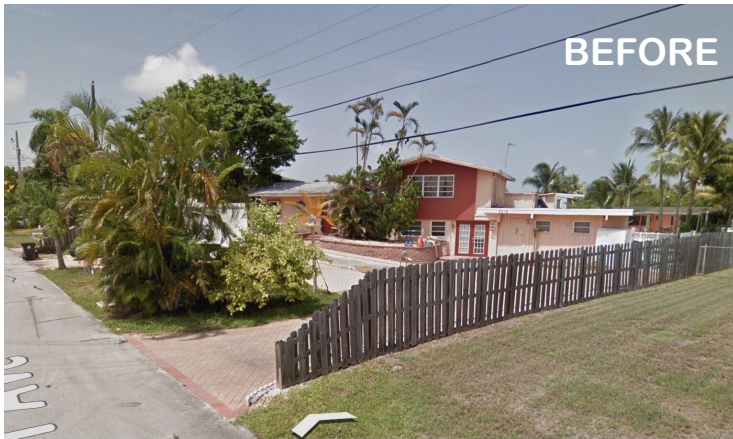


Commissioner Ben Sorensen was joined by Community Appearance Board Members; Michael Rigg, Paul Robinson and Stephanie Howe Tonsfeldt and Geoff Rames of LICIA to recognize June at her beautiful home on Tortugas Lane.



Geoff Rames of LICIA, Commissioner Ben Sorensen, Michael Rigg of CAB, Award Winner June Garren Whitney, Paul Robinson of CAB

June moved into the 1950's single-family home in Lauderdale Isles in 2016. Upon purchase, the property had very little greenery and the retained planter beds, pavers and circular driveway were covered in red brick. June quickly saw the opportunity for a more environmentally friendly design and added lush green grass and plants. The vegetation planted around the property was propagated from overgrown foliage she discovered along her walks in the community or while kayaking through the canals of Fort Lauderdale. In addition, she installed a European sculptured stone driveway, painted the re-



### INSIDE THIS ISSUE:

Riverland Road Traffic \*\* LICIA's Successes \*\* Metroplex Update \*\* Riverland Community Pool \*\* Luna's Progress

# LICIA Special General Meeting Saturday, Nov. 13th, 10am At Civic Peoples Park

After cancelling all the General Meetings for the past year due to the pandemic, LICIA is holding a Special General Meeting in November.

The purpose of this meeting is the election of the LICIA officers for next year, as required by our by-laws.

All residents of Lauderdale Isles are welcome to attend. Association Members - meaning neighbors who have paid the \$20 Association dues - may vote in this election.

We will also present brief reports by our Committees and welcome input on any topics by our neighbors. If you're interested in becoming involved with the Association, you should attend this meeting.

**Please note:** Parking is very limited at Civic Peoples Park. Please walk or bike to the meeting, and bring a couple of folding chairs.

## PLUS -

For anyone attending this meeting and pays their \$20 dues for the new fiscal year which starts in November, we will award them one of our beautiful Lauderdale Isles Coozies, compliments of RD Plumbing.



And all members will participate in a drawing for a \$50 gift certificate to Flanigan's.

What a deal!

We'll see you at the meeting on Saturday, November 13th!  
*Your LICIA Board of Directors*

### From the Editor's Desk

By Geoff Rames

- We are sorry to report that Audrey Edwards resigned as LICIA President in October for personal reasons. Vice President Earl Prizlee has taken over in the interim
- Many thanks to the contributors in this issue: Lynn Cahoon, Diana Steeger, Judy Seiler, Earl Prizlee, & Jackie Zumwalt
- Jeannie Lewis is stepping down as Treasurer after serving in that capacity and doing a great job for seven years.

### November Elections

We are pleased to announce that we have a slate of candidates for the LICIA officer positions at the November elections:

**President:** Earl Prizlee, currently serving as Vice President

**Vice President:** Geoff Rames, served previously as Vice President

**Secretary:** Deb Dedek, currently serving as Secretary

**Treasurer:** Diana Steeger, currently serving as Lane Rep for Andros

There will also be nominations for Lane Reps (Directors) for several openings on the Board of Directors.



**I WANT YOUR DUES!**

*It's that time of the year*

## Association dues are due

Our fiscal year runs from November through October. With the new fiscal year comes the need for all residents to contribute their annual dues of \$20. Your contribution helps LICIA in our efforts to improve and protect our neighborhood. Why not take a minute right now to write a check and mail it to our PO Box. Plus, by paying your dues, you'll be a **Member in Good Standing**, meaning you may serve on LICIA Committees & you can vote in the November Election.

To mail your dues, use the handy coupon on the back page  
You may also pay your dues at the November 13th General Meeting

You can also use Zelle to pay your dues. Use email address:  
licia.treasurer@gmail.com

*When remitting by Zelle, send a second email with your street address*

LICIA encourages you to submit articles for the newsletter. Letters & articles may be submitted by email to:  
[g.rames.licia@gmail.com](mailto:g.rames.licia@gmail.com). All submitted articles are subject to approval by the Executive Board.

All submitted materials will become the property of the association and may be printed in this newsletter or reprinted by any other interested publication. Deadline for submission: 25th of month prior to publication.

**Lauderdale Isles Civic Improvement Association, Inc., PO Box 121255, Fort Lauderdale, FL 33312**



**Advertising Rates:** Our newsletter is published quarterly

	One Time	Half Year	Full
Year			
Full Page	\$100	\$190	\$360
Half Page	75	142.50	270
Qtr Page	50	95	180
Bus. Card	25	50	100

Make checks payable to LICIA & send to our PO Box address prior to publication. The deadline for submission is the 25th of the month prior to publication. Newsletter is published quarterly in Feb, May, Aug, & Nov. Must be paid in full to receive discount. Ad must be ready-to-go as jpg or pdf. *These rates are subject to change in 2021.* Members in good standing (paid dues) are allowed a free, two-line ad per person for personal property, subject to space availability.

# YOUR LAUDERDALE ISLES NEIGHBOR & PLUMBER



CFC1429652

**RD PLUMBING**  
& SEWER, INC.

**24/7 SERVICE!**

A FULL SERVICE & REPAIR COMPANY

EXPERIENCED  
PROFESSIONAL  
QUALITY  
GUARANTEED!

**FREE  
ESTIMATES**

**CONTACT US TODAY!**

**954-707-9594**

Em: [rich@rdplumber.com](mailto:rich@rdplumber.com) | Web: [www.rdplumber.com](http://www.rdplumber.com)

# A LOCAL PLACE FOR FAMILY FUN



By Lynn Cahoon

Now that the Lauderdale Isles Yacht Club is no longer operating, do you miss the community pool? Even if you have your own pool, you may miss the social aspects of a neighborhood pool.

Did you know that there is a new-ish community pool close to Lauderdale Isles? The Riverland Community Center, at 950 SW 27th Avenue (Riverland Road, just north of Davie), boasts an Olympic-sized pool that offers—year-round— Water Aerobics classes, swim lessons, morning lap swim sessions, in addition to “Recreational swim”, when the pool is open to the public, free, at certain hours, most afternoons and weekends.

Several people from the Isles, myself and husband Dick included, participate, or have participated, in these offerings since the facility opened about 10 years ago. However, we find that many of our neighbors have never even heard about this pool. We would like to invite you to try a water aerobics class or lap swim session (first

time is free), or any other offering at the pool. See schedules below.

In addition, the Riverland Community Center building, next to the pool, hosts Pickleball play and other events that may be of interest. Call the pool office at 954-828-5320 for more information or schedules, or call me (954-881-5899) or Dick (954-997-2591) if you would like some more personalized impressions.



Water Aerobics instructor Suzy invites you to try the class.



Water Aerobics class enjoys a sunny morning.



Class works muscles with water “weights.”

PASS INFO	
<b>10-Visit Pass</b>	<b>30-Visit Pass</b>
\$30.00 Resident	\$75.00 Resident
\$45.00 Non-Resident	\$112.50 Non-Resident
<b>Senior/Military</b>	<b>Senior/Military</b>
\$15.00 Resident	\$45.00 Resident
\$25.00 Non-Resident	\$75.00 Non-Resident

## Riverland Park Pool Schedule

### Lap Swim

August 16-December 31

Mon/Wed/Fri  
8:00 AM-12 PM

Tue/Thu/Sat  
9:00-11:00 AM

Tue/Thu  
6:45-7:45 PM

Fee: Pass

### Water Aerobics

August 17-December 31

Tue/Thu  
9:00-10:00 AM  
10:15-11:15 AM

6:45-7:45 PM

Saturday  
9:00-10:00AM  
10:15-11:15 AM

Fee: Pass

### Recreational Swim

August 15-November 21  
Mon/Wed/Fri 2:00-3:00 PM

Tue/Thu 2:00-4:00 PM  
Sat/Sun 1:00-4:00 PM

Fee: Free

## DUES ARE DUE!



Ask many of the officials with the City of Fort Lauderdale, and they'll tell you that the Lauderdale Isles Civic Improvement Association is one of the most active Associations in the City. The Association's Board of Directors meets frequently with City officials as well as conducting our own monthly Board meetings. One of the most important functions of the Association is keeping you, a resident of Lauderdale Isles, aware of all the issues the Association is involved in and what's going on in the Isles. LICIA has three methods to keep neighbors in the Isles abreast of Association activities: our website, our newsletter, and our General Meetings.

### LICIA Website: [ourlicia.com](http://ourlicia.com)

The first is our website, [ourlicia.com](http://ourlicia.com). Here you can find loads of historical info, including copies of past newsletters, financial reports, meeting minutes, bylaws, etc. For instance, if you're not sure if you paid your Association dues this year, check the website; there's a running list of dues payers that's updated monthly. Need to contact the Association about something? Do it through the contact page on our website. The website is in the process of a major update by our very capable webmaster, Dawn Hanna, so check back frequently.

### LICA Newsletter

Our second method of communication is the newsletter you are reading right now. It's published four times per year and is delivered to every home in Lauderdale Isles. We try to cover all the current issues affecting the Isles, provide some good news about the neighborhood, and have a little fun too (has anyone heard from the "Iguana Boys" lately?). Very importantly, the newsletter contains details about upcoming neighborhood events, like our Waterway Cleanups and our quarterly General Meetings. Reports by our active committees are included, like the ones by Airport Noise, and Riverland Road /School Traffic, in this issue. The printing of the newsletter is paid for by your \$20 annual dues and is supported by advertisers, several of whom are businesses owned by your neighbors in the Isles.

### General Meetings

Our quarterly General Meetings are our third method of communication. But as you know, we've had to suspend them for the past year and a half because of COVID. We're very hopeful that in February we'll be back to our regular schedule. In the meantime, we are having a brief Special General Meeting on Saturday, November 13<sup>th</sup>, specifically for the annual election of Association officers. (See the article elsewhere in this newsletter for info). Our General Meetings always feature a relevant "headliner" speaker, including our favorite Commissioner Ben Sorensen at least twice a year. Past speakers have also included Congressman Ted Deutch, Airport Officials (they wore bulletproof vests), State Legislator Evan Jenne, City Parks Director Phil Thornburg (we held a straw vote on the Riverland Preserve dogs-or- no dogs issue), City Attorney Alain Boileau ( can you shoot iguanas with air rifles) FLPD Command staff and local officers, Code Enforcement, and other City officials. At these meetings, you hear the LICIA Board Members present the latest developments on all relevant neighborhood issues, and the meetings often develop into very lively discussions. There are drawings for restaurant gift certificates and of course you can pay your Association dues at these meetings, too.

### Now about Dues

Our website, newsletter and General Meetings all cost money – plus we're going to need to spruce up the lane signs this year, too. And we need some reserves, "just in case." That's why we need your support by paying the \$20 annual dues for our new fiscal year and for you to be a "member in good standing" of the Association. Take a minute right now and mail in your \$20 check – or you can pay using Zelle. Or attend the Special General Meeting on Nov 13<sup>th</sup> where we will gladly accept your cash, of course. But however you do it, please pay your annual dues to support the Association as it protects and improves this great neighborhood. You'll be glad you did.



LICIA has developed strong relationships with City officials, including Commissioner Ben Sorensen. He is seen here addressing the crowd at one of our Waterway Cleanup events.

### HERE'S WHAT YOUR DUES SUPPORT: A FEW OF LICIA'S MANY SUCCESSES

- LICIA prevented the rezoning of the land on the south side of the river to industrial, which would have been a disaster, approximately 25 years ago
- LICIA led the efforts to persuade the County to establish Riverland Woods Park & Boat Ramp by doing a land swap with the owner of that property
- LICIA and its New River Preservation Committee engaged the City to help defeat the plan by the Town of Davie to allow the property across the river to become a commercial marina
- LICIA worked with Florida DOT and BSO to alleviate the problem of the homeless living under the 441 bridges
- LICIA assisted the Lauderdale Isles Water Mgmt District to convince the City to spend \$440,000 to dredge our canals in 2015
- LICIA worked together with LIWMD to sponsor five hugely successful neighborhood waterway cleanups
- LICIA worked closely with other neighborhoods and formed the Riverland Preservation Society, which prevented the Black Property on Riverland Rd. from being developed and instead convinced the City to purchase that tract to create the Riverland Preserve.
- LICIA's Airport Noise Committee worked tirelessly on the BCAD Part 150 Noise Study and then crafted the "Phoenix Solution" which Commissioner Sorensen and the City endorsed, resulting in their retaining the country's pre-eminent airport noise attorneys who convinced the FAA to modify the Metroplex plan and significantly reduce airport noise for the neighborhood
- LICIA has lobbied every year to prevent the State Legislature from passing legislation to pre-empt local regulation of short term vacation rentals
- LICIA is working tirelessly with the City, County, and Florida DOT to alleviate traffic problems on Riverland Road, especially near the New River Middle School

## LIWMD Update



LAUDERDALE ISLES  
WATER MANAGEMENT  
DISTRICT  
www.liwmd.org

### Fertilizer Use

The City's ordinance prohibiting fertilizer use during the rainy months every year ends September 30th. Note that year-round, the City prohibits application of fertilizer within ten feet of the waterways. Maybe it was due to the fertilizer ban or maybe it was just sheer luck, but our waterways—and all the waterways in Broward County - did not experience an algal bloom this year. As always, please advise your landscape contractor to not blow lawn debris into the canals. Amazingly, some of them actually comply with this request.

### November Waterway Cleanup

LIWMD and LICIA's Board of Directors agreed to cancel the November Waterway Cleanup, due to uncertainty about the COVID pandemic. Instead, we have decided to combine our neighborhood cleanup with the county-wide MIAF Waterway Cleanup in March. Watch for details in the February newsletter.

### Sunken Boats

We had a couple of sunken boats in the canals during the past rainy months. Code Enforcement along with the FLPD Marine Unit respond immediately to these situations; their goal is NOT to issue citations, it's just to get the boat refloated as quickly as possible, and not have it sitting on the bottom leaking fuel or oil into the canal for days on end. The best number to call for sinking or sunken boats is the 24 hour Customer Service number 954-828-8000. In the meantime, to prevent mishaps like this, check your batteries and bilge pumps weekly.

### Water Quality

Broward County's Environmental Lab last tested the water in the river for bacteria at Broward Marine, near Andros Lane, on August 23rd. The reading was 32.7, which is "GOOD," well below the Department of Environmental Protection's baseline of 130. Despite what you may read on Nextdoor, our water quality is good and we are not affected by the sewer pipe breaks that have occurred miles downriver. The lab does DNA testing of the bacteria, and the main source of the bacteria levels we see is from dog waste, so please pickup after your canine friend.

Geoff Rames, Chairman

## Vice President's Message



By Earl Prizlee

Happy Holidays! We are entering into the time of the year again to celebrate the Holidays. Thankfully, a vaccine was developed to save us from the dreaded Covid-19 pandemic.

If you are new to Lauderdale Isles, I would like to welcome you to one of the most unique and diverse nautical neighborhoods in the City of Fort Lauderdale. The Lauderdale Isles Civic Improvement Association, Inc. (LICIA) is not a "Homeowners Association" in the traditional sense. The LICIA is a volunteer Civic Association with volunteer membership and board members and is dedicated specifically to the preservation and improvements to the Lauderdale Isles.

One of our recent accomplishments is the implementation of FAA Metroplex. The LICIA Airport Noise Committee worked diligently with Commissioner Ben Sorensen and the FAA to modify the Metroplex departure patterns to south of Lauderdale Isles. This system keeps planes on a consistent predetermined path that maintains noise levels that are more tolerable within the neighborhood. Visit the LICIA website [www.ourlicia.com](http://www.ourlicia.com) for the history of the Metroplex and the Part 150 Noise Study in past newsletters, as well as many other topics of interest.

During the pandemic, the LICIA Board has been meeting virtually and the General Meetings have been cancelled. We have been working on replacing the Lauderdale Isles Entrance Sign and coordinating with the Riverland Road Widening Project and the Traffic Calming Project. My goal over the next year is to re-engage with community with a couple of outdoor events. I am asking you to please email us your suggestions that you would like to see to [laudisles@gmail.com](mailto:laudisles@gmail.com). Again, this newsletter was prepared and delivered by volunteers and paid for by membership dues of \$20/year.

*This is your Lauderdale Isles Civic Improvement Association.*

Earl

## FROM THE LAUDERDALE ISLES ARCHIVES



This picture is from a Gill Company sales brochure for Lauderdale Isles, circa 1955. Note - Only one tree on the entire canal!

## New Nighttime Inspector

The City's Code Enforcement Department now has an inspector working Friday and Saturday nights until 2:00am, for the specific purpose of handling Vacation Rental complaints, primarily for noise and parking issues. Calls for the inspector can be placed with the City 24 Hour Customer Service number, 954-828-8000.



Call today for a  
Free Market Analysis  
of you Home



Charles Rutenberg Realty Fort Lauderdale  
The Smart Brokers



**Jackie Zumwalt Realtor ABR, GRI**  
**(954) 330-5621**

**JackieZRealtor@gmail.com**

**www.BrowardCountyTopAgent.com**

*Your neighborhood is my neighborhood*

**Airport Noise Update: Metroplex Starts  
“Runway 28 Right, RNAV to DREDS”**

This is what we want the controllers to assign to departing aircraft. Translating to English, it means “Use the north runway heading west & use Area Navigation (“RNAV”) to Waypoint DREDS,” in other words let the computers fly the plane to way-point DREDS, which makes all the difference in noise levels for Lauderdale Isles.

Our first experience with west winds and Metroplex was on Tues., Aug 31st. Things actually went very well that day: departing planes were staying .6 miles south of Lauderdale Isles as they headed to the new Metroplex waypoint DREDS. We had very few flyovers and the noise situation was like it was back in 2014 before the new runway opened; we had noise but not the horrendous noise of planes constantly flying directly overhead.

Things continued that way for the next couple of days, with an occasional over flight throughout the day. On Saturday Sept. 4 and Sunday Sept. 5, there were intermittent storms out west, which resulted in more over flights and accompanying noise as the controllers assigned the 290 heading due to the weather. The aircraft noise consultants hired by the City had told us there would be a learning curve for Metroplex as it began, and there was.

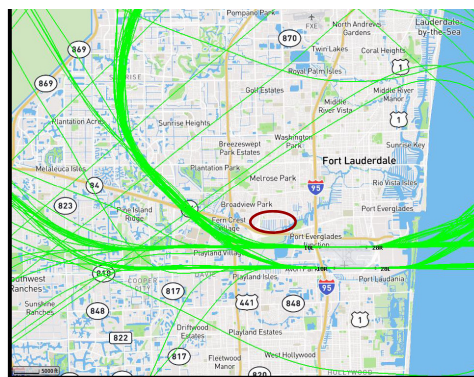
However, on Wednesday Sept 8<sup>th</sup>, all flights in the evening were given the 290 heading and we experienced a lot of aircraft noise. There were no significant weather problems out west, but even the noise officials with BCAD were concerned about what was happening that evening, and they asked the FAA Control Tower about it. Here is the response: “Due to instances with prop departures, non RNAV Jets, weather and saturation in MIA airspace, FLL was on headings coordinated with MIA approach.” It’s hard to believe this response: there are very few prop departures,

almost every commercial jet flown out of FLL has RNAV & weather was not an issue. But “saturation in Miami airspace?” The whole idea of Metroplex is so that aircraft can fly closer and more efficiently, and to manage many aircraft at the same time, so RNAV is the solution to “saturation,” yet it wasn’t in use that night? You can draw your own conclusions about that answer from the tower.

Over the past two months, we’ve had several instances of multiple days of west winds. When the weather is clear, “RNAV to DREDS,” is the rule; when there are storms out west, RNAV is suspended for a while. But each time, things improve a little more. Our best estimate is that 75 to 80% of the departures are on RNAV now, so during most of the days with west winds, things are a lot better, especially when the weather is clear.

However, the LICIA Airport Noise Committee is working with Commissioner Sorensen to engage the City’s Airport Noise Consultants to study the situation for us to ensure that the Metroplex implementation is going as it should. Stay tuned.

*The LICIA Airport Noise Committee*



**August 31: First day of west winds and Metroplex. Lauderdale Isles is within the red oval. All the departures (green) were .6 miles south of the neighborhood, and noise was very tolerable, with no over flights. The issue now is that when there is weather out west, RNAV procedures are not being used.**

# RIVERLAND ROAD MOBILITY IMPROVEMENT PROJECT UPDATE



The Riverland Road is currently under construction as part of the Riverland Road Mobility Improvement project administered by the Florida Department of Transportation (FDOT). The entire project is 3.6 Miles along Riverland Road from SR 7/US 441 to SR 842/Broward Blvd.

The Lauderdale Isles portion of the project will be widened to accommodate new bike lanes and the travel lanes will be narrowed to 10' from the current 11' width. The project is approximately 15% complete and anticipated to be completed Summer 2022. If you look closely, you will see the Contractor is installing drainage structures and pipes that are anticipated to be completed by the end of February. Once this work is complete, the Contractor will begin the actual roadway widening portion of the work. This is when you really begin to see the impacts of the work along the corridor.

One of the complaints that was brought to FDOT's attention was the asphalt rutting in the travel lane adjacent to the Civic Park. Within one day, FDOT had the Contractor place asphalt to correct the issue. Please be PATIENT with the traffic, this inconvenience will not last forever and the road will be much smoother than before!

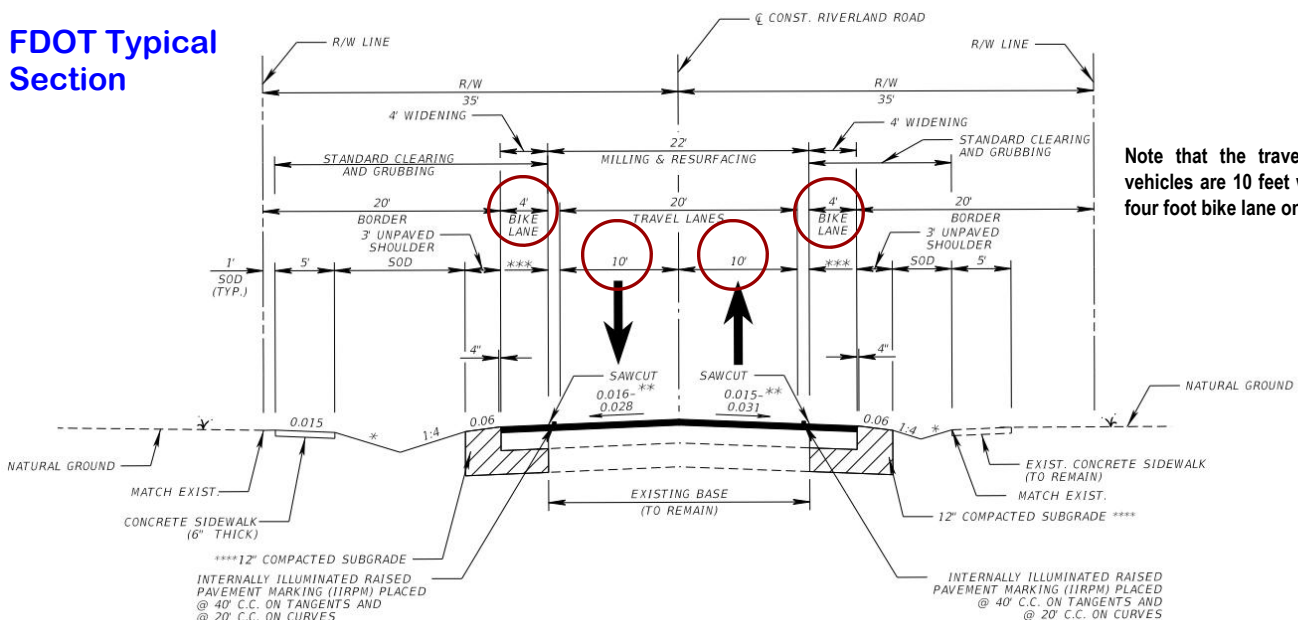


The rutting in the center of the road gets repaired



This is a nighttime simulation prepared by FDOT at the curve adjacent to the Riverland Preserve Park. Note the illuminated raised pavement markings to delineate the bike and travel lanes.

## FDOT Typical Section



Note that the travel lanes for vehicles are 10 feet wide, with a four foot bike lane on each side.



# Traffic Be Gone!



By Diana Steeger

The beginning of the school year brought some sense of normalcy for students, heading back to classrooms. For us residents, the first few weeks brought a lot of unwelcomed headaches. A huge wave of traffic during drop off and pick up hours flooded Riverland Road from parents commuting the kids. A number of factors contributed, between more parents wanting to drive their kids because of COVID worries, we now see a decrease in buses. Under normal circumstances the school would have approximately 45 buses available. I think we are lucky to see 6 vehicles transporting students on any given day. Additionally, the school is overcrowded, with around 1600 and this number is only anticipated to grow.



The view from Andros Lane during rush hour at the school. The drivers on Riverland will block Andros & won't even allow cars to exit the lane. Same is true on Bimini, Cat Cay & Duck Key Lanes.

All this extra traffic on Riverland Road, plus ongoing construction, quickly meant long lines. At the beginning of the school year, the line reached 441. This not only frustrated parents trying to get their children to school, but we at the Isles quickly experienced our own setbacks, when trying to exit our lanes, or getting stuck in traffic. Andros Lane was bombarded with parents driving into our street and parking along the sides dropping or picking kids up. This only hindered our own exit, with then the additional challenges of having our intersection blocked, without any consideration or even thought of letting us through. As if this weren't enough, extra precaution has to be taken to watch children walking and crossing the lanes, while we're trying to find openings to get through school traffic, making sure that regular traffic doesn't hit us. It's a war zone!

The City of Fort Lauderdale was quickly flooded with complaints and concerns on how this traffic is affecting surrounding residents. FDOT, Fort Lauderdale PD and school officials all heard our complaints, and have since clearly implemented measures to alleviate this influx of cars. We did have FLPD present one day, and they were very helpful in keeping cars from blocking the intersection, and allowing us to exit. However, even FLPD have commented this is the worst situation pertaining to school traffic within the entire city, that they've witnessed.

A few meetings have taken place, and topics ranging from staggered releases for students, designated routes for parents traveling in and out of the campus, and coordinated efforts with FLPD or traffic aides, are all being discussed. LICIA also established a committee, and is working in collaboration with the City in reviewing and presenting possible solutions. One of these solutions is using one way directions for in and out traffic. In other words, incoming traffic would only be allowed from Riverland Road West, drop off

at campus, and then exit Riverland eastbound only; any left turns onto Riverland west and 31<sup>st</sup> Street north would be blocked. Not ideal, we all understand, however it at least allows resident's cars heading west a clear drive through, and would move parent traffic along.



Looking east on Riverland Road at the school. The drivers stack up in the turn lane into the school, and spill into the travel lane and block it causing total gridlock on Riverland.



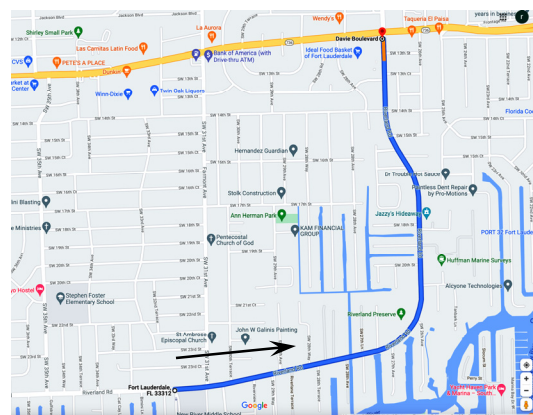
Other schools have specialized traffic signs for school hours

We did some research into what other schools are doing, how are they able to avoid this deadlock, and noticed that traffic aides are in place to help direct cars, or directional / turn signs during certain times of the day only allowing exiting vehicles to circulate in a single direction.

While the City reviews different solutions, it may ask residents to share their personal experiences, by means of a Zoom meeting. We would like to encourage you to participate, and explain your experience, how this has affected you and do you have any recommendations you'd like to

share. Let us know if you'd like to participate by emailing us at [laudisles@gmail.com](mailto:laudisles@gmail.com).

These challenges will not miraculously go away, and in fact might take some time to find a solution. In the meantime, we have noticed quicker pick up times and definitely not the same long lines that came with the beginning of the school year. However, just these past couple of days, I've had to literally nudge my way out of the street to get onto Riverland and make my way to the office in the mornings. And to think that traffic is only predicted to increase; it is our hope we find a compromise that works for all.



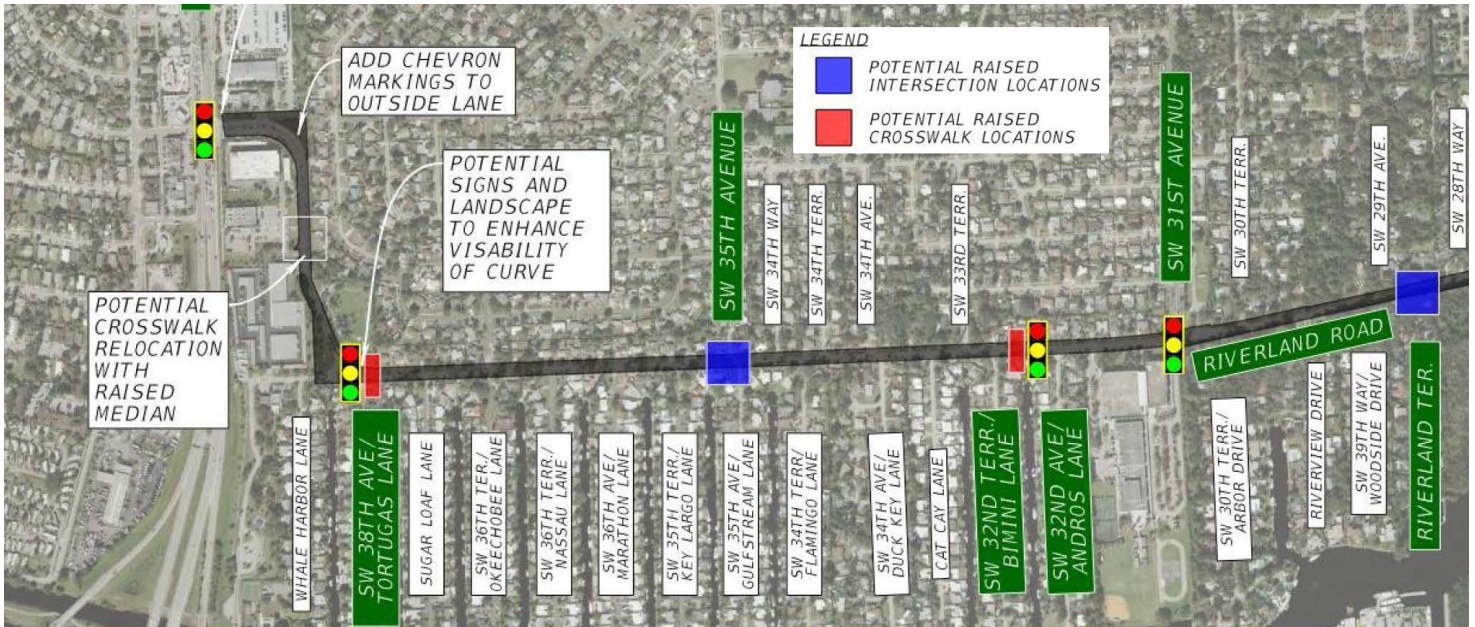
One solution being discussed: all traffic exiting the school would be required to go east on Riverland Road, as depicted by arrow.



# RIVERLAND ROAD TRAFFIC CALMING IMPROVEMENTS

The City of Fort Lauderdale has contracted with Kimley-Horn and Associates, Inc. to study potential traffic calming measures that can be implemented upon the completion of the FDOT Mobility Project (New Bike Lanes). Kimley-Horn has studied the corridor and conducted a public meeting on June 21, 2021, to provide ideas and listening to the public for input. On Monday, October 25, 2021, Kimley-Horn presented their recommendations based on concerns that were provided by the public at various locations along the corridor. The Traffic

Engineers evaluated all traffic calming measures for its applicability, effectiveness, and physical constraints. Many residents felt that a traffic circle or round-a-bout would be a solution to reducing the speeds. Kimley-Horn did evaluate these options and determined that to be properly implemented, there would be significant impacts to adjacent properties at the specific location. The result would be land acquisitions and therefore not a feasible option. The solution that was recommended to reduce speeding was to install raised crosswalks and raised intersections located at strategic spacing throughout the Riverland Road Corridor. The graphic below shows specifically where they would be located within the Lauderdale Isles section.



This overhead view shows where raised intersections and raised crosswalks are planned for the Lauderdale Isles area of Riverland Road. More are planned farther east on Riverland



Raised intersection



Typical raised intersection installed in Fort Lauderdale

The raised crosswalks and raised intersections create a safe, slow-speed crossing at minor intersections. Similar to speed humps and other vertical speed control elements, they reinforce slow speeds and encourage motorists to yield to pedestrians at the crosswalk.

Over the years, our Team has sold, listed or leased  
over 120 Lauderdale Isles homes.



*The Gordon Group*

SERVING BROWARD COUNTY FOR OVER 35 YEARS

We KNOW the area.  
We KNOW the homes.  
We KNOW the waterways.

**RE/MAX**  
Consultants Realty I

Jeannie DeRolf, Realtor 954-850-2447

Julie Gordon, Broker Associate 954-445-3345



## RIVERLAND ROAD LITTER

By Judy Seiler



Have you walked Riverland Road lately? Sadly, people driving through our community seem to think its a good place to pitch their trash. Cans, bottles, and fast food containers, among other debris. I hope when all the road work is completed there will be motivation to

place several NO LITTERING signs with fines indicated. I realize it is nearly impossible to identify the offending parties, but perhaps signs will help.



The swale on Riverland Road

## Hot Rod Luna

By Diana Steeger

Many of you have inquired as to how Luna is doing with her new wheels from [www.eddieswheels.com](http://www.eddieswheels.com). A quick update: training continues, and is progressing slowly. We've had a few health hiccups that caused training to be temporarily suspended, but she continues to view her wheels as something fun and positive (thanks to her love for treats). A huge thank you goes out to Lauderdale Isles neighbor and extraordinary dog trainer, Dawn Hanna ([www.ohbehavedogtraining.com](http://www.ohbehavedogtraining.com)) for helping us through this process, and giving us insight from a dog's point of view.



Luna is progressing nicely, albeit slowly. She has to be trained to stay below the speed limit.



You can pay your LICIA dues using Zelle.  
Send to:

[licia.treasurer@gmail.com](mailto:licia.treasurer@gmail.com)

Please send a second email that contains your street address to this same email address, so we can match up your payment in our records. Of course, you can always mail a check.

## THE REFRIGERATOR LIST

Updated November 2021

### LICIA BOARD OF DIRECTORS 2020-2021

#### Executive Board

President: Audrey Edwards  
Vice-President: Earl Prizlee 954-579-8465  
Secretary: Deborah Dedek 954-257-1125  
Treasurer: Jeannie Lewis 954-401-0750

#### Board of Directors

Andros: Diana Steeger 305-282-2048  
Bimini: *Open*  
Cat Cay: Dick Cahoon 954-997-2591  
Duck Key: *Open*  
Flamingo: Penny Shea 754-581-6572  
Gulfstream: Geoff Rames 954-327-9095  
Key Largo: Jackie Zumwalt 954-330-5621  
Marathon: Julie Gordon 954-445-3345  
Nassau: Karen Rames 954-327-9095  
Okeechobee: Deborah Dedek 954-257-1125  
Sugarloaf: Vince Valdeperas 954-600-0945  
Tortugas: Judy Seiler 954-583-5087  
Whale Harbor: Dawn Hanna 954-873-1925

Newsletter Editor: Geoff Rames 954-327-9095

[grames.licia@gmail.com](mailto:grames.licia@gmail.com)

Webmaster: Dawn Hanna: [mmex99@yahoo.com](mailto:mmex99@yahoo.com)

## HELPFUL PHONE NUMBERS

Fort Lauderdale Police Non-Emergency 954-764-HELP  
Fort Lauderdale Customer Svc. (24 hrs) 954-828-8000  
*including Water/Sewer/Trash/Canal Cleaning*  
**Airport Noise Complaints \*** 954-359-2366  
City Hall 954-828-5004  
Building Department 954-828-5191  
Code Enforcement 954-828-5207  
Commissioner Ben Sorensen 954-828-5028  
Animal Control (Broward County) 954-359-1313  
Comcast *Good luck!* 800-266-2278  
**Nuisance Alligators: FWC** 866-392-4286  
Crimestoppers 954-493-TIPS  
Mosquito Control (Broward County) 954-765-4062  
FPL Power Outages 800-4OUTAGE

*\* File Airport Noise Complaints easily with the smart phone app found at:  
<https://www.broward.org/Airport/Business/NoiseInformation/>*

## PICKUP SCHEDULE for LAUDERDALE ISLES

**Weekly Trash Pickup** (black cart): Tuesday & Friday  
**Weekly Recycling Pickup** (blue cart): Tuesday  
**Weekly Yard Waste Pickup** (green cart): Friday  
**Monthly Bulk Trash Pickup:** First Wednesday

*For more info: [www.fortlauderdale.gov/pickup](http://www.fortlauderdale.gov/pickup)*

## WATERWAY ISSUES - Who to call:

- **Alligators ( & Crocodiles) Problems**  
FWC Nuisance Alligators: 1-866-FWC-GATOR
- **Pollution/ Oil Spills** within the City of Fort Lauderdale:  
7:30 –5:00 Ft. Laud. Customer Service:954-828-8000  
Evenings/Weekends: FLPD 954-764-HELP
- **Pollution Complaints** outside the City of Ft. Lauderdale:  
County Environmental 24 hrs: 954-519-1499
- **Large Debris/Dead Animals in the water:**  
Ft. Laud. Customer Service 954-828-8000
- **Injured Manatees**  
FWC: 1-888-404-FWCC
- **Sinking or Sunk Boats**  
24 Hour Customer Service 954-828-8000
- **Unightly or Derelict Boats/ Boats too wide for canal:**  
Ft. Laud. Code Enforcement: 954-828-5207
- **Lawn Service Firms disposing debris in canal:**  
FLPD 954-764-HELP
- **Illegal Dock Construction/Pilings/Dredging**  
Code Enforcement: 954-828-5207

## Lauderdale Isles Real Estate Stats

By Jackie Zumwalt, Realtor [JackieZRealtor@gmail.com](mailto:JackieZRealtor@gmail.com)

### Active Listings: List Price

2690 Marathon Ln	\$1,100,000
2613 Gulfstream Ln	\$895,000
2503 Andros Ln	\$843,000
2549 Marathon Ln	\$839,000
2413 Sugarloaf Ln	\$809,000
2618 Key Largo Ln	\$795,000
2525 Gulfstream Ln	\$759,000
2625 Flamingo Ln	\$750,000
2413 Flamingo Ln	\$749,000
2506 Gulfstream Ln	\$735,000
2406 Bimini Ln	\$619,900
2418 Flamingo Ln	\$600,000
2418 Andros Ln	\$369,000

### Active Under Contract:

2531 Key Largo Ln	\$850,000
2453 Flamingo Ln	\$756,000
2406 Sugarloaf Ln	\$699,000
2407 Sugarloaf Ln	\$599,000

### Pending Sales:

2612 Sugarloaf	\$779,000
2424 Andros	\$465,000

### Closed Sales last 60 days List Price Sale Price

2459 Gulfstream Ln	\$1,050,000	\$1,050,000
2460 Bimini Ln	\$799,900	\$750,000
2531 Tortugas Ln	\$749,000	\$700,000
2700 Sw 34th Ave	\$657,500	\$653,500
2534 Whale Harbor Ln	\$580,000	\$550,000
2607 Flamingo Ln	\$570,000	\$550,000
2425 Bimini Ln	\$549,000	\$550,000
2642 Key Largo Ln	\$539,900	\$540,000
2430 Flamingo Ln	\$479,000	\$479,000
2513 Whale Harbor Ln	\$419,000	\$390,000

## MEMBER DUES for Nov. 2021 – Oct. 2022: BE A MEMBER IN GOOD STANDING

Dues are only \$20 per year. Mail to: LICIA, PO Box 121255, Fort Lauderdale, FL 33312

*Please return this portion with your check*

Name: \_\_\_\_\_  
Address: \_\_\_\_\_  
Email: \_\_\_\_\_