

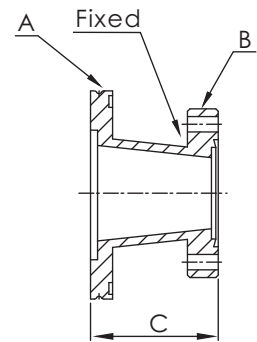
Adaptors

ISO to CF FLANGE CONICAL ADAPTORS

*Material: SS 304L



Part Number	Flange Size	A	B	C
ADC-ISO63xCF275	ISO63/CF2.75(DN40)	ISO63	CF2.75	71.90
ADC-ISO63xCF338	ISO63/CF3.38(DN50)	ISO63	CF3.38	72.30
ADC-ISO63xCF462	ISO63/CF4.62(DN80)	ISO63	CF4.62	108.00
ADC-ISO63xCF600	ISO63/CF6.00(DN100)	ISO63	CF6.00	109.50
ADC-ISO80xCF275	ISO80/CF2.75(DN40)	ISO80	CF2.75	103.70
ADC-ISO80xCF338	ISO80/CF3.38(DN50)	ISO80	CF3.38	104.10
ADC-ISO80xCF450	ISO80/CF4.50(DN63)	ISO80	CF4.50	107.90
ADC-ISO80xCF600	ISO80/CF6.00(DN100)	ISO80	CF6.00	109.50
ADC-ISO100xCF338	ISO100/CF3.38(DN50)	ISO100	CF3.38	104.10
ADC-ISO100xCF450	ISO100/CF4.50(DN63)	ISO100	CF4.50	107.90
ADC-ISO100xCF462	ISO100/CF4.62(DN80)	ISO100	CF4.62	108.00



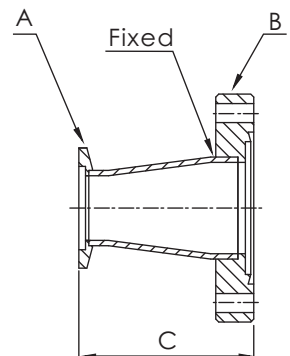
AD

KF to CF FLANGE CONICAL ADAPTORS

*Material: SS 304L



Part Number	Flange Size	A	B	C
ADC-KF16XCF212	KF16/CF2.12(DN25)	KF 16	CF2.12	42.90
ADC-KF16XCF275	KF16/CF2.75(DN40)	KF 16	CF2.75	69.30
ADC-KF25XCF133	KF25/CF1.33(DN16)	KF 25	CF1.33	43.15
ADC-KF25XCF275	KF25/CF2.75(DN40)	KF 25	CF2.75	69.30
ADC-KF25XCF338	KF25/CF3.38(DN50)	KF25	CF3.38	69.90
ADC-KF40XCF133	KF40/CF1.33(DN16)	KF 40	CF1.33	68.55
ADC-KF40XCF212	KF40/CF2.12(DN25)	KF 40	CF2.12	68.30
ADC-KF40XCF338	KF40/CF3.38(DN50)	KF 40	CF3.38	69.90
ADC-KF40XCF450	KF40/CF4.50(DN63)	KF 40	CF4.50	73.70
ADC-KF40XCF462	KF40/CF4.62(DN80)	KF 40	CF4.62	103.10
ADC-KF50XCF212	KF50/CF2.12(DN25)	KF 50	CF2.12	68.30
ADC-KF50XCF275	KF50/CF2.75(DN40)	KF 50	CF2.75	69.30
ADC-KF50XCF450	KF50/CF4.50(DN63)	KF 50	CF4.50	73.70
ADC-KF50XCF462	KF50/CF4.62(DN80)	KF 50	CF4.62	103.10
ADC-KF50XCF600	KF50/CF6.00(DN100)	KF 50	CF6.00	106.90



*Note: SS 316L Material Available on Request.

*Note: Polished and Electro- Polished Tube Finishes Available on Request.