



Church Ditch
Water Authority
Est. 1865

ANNUAL CONTRACTUAL USERS MEETING

MARCH 14, 2019



CDWA
Est. 1865

AGENDA

- INTRODUCTIONS
- 2018 DIVERSION REPORT
- 2018/2019 MAINTENANCE ACTIVITIES
- 2019 SNOWPACK
- BUDGET UPDATE
- DELIVERY PROCESS
- REMINDERS
- CIP UPDATE

CDWA
Est. 1865

2018 CHURCH DITCH DIVERSIONS AT CLEAR CREEK

- TOTAL WATER DELIVERED 4,106.718 AF
- DELIVERY PER INCH .72 AF/INCH
(325,850 GALLONS PER AF)
- COST TO USER PER INCH \$187.73 PER AF
- AVERAGE DELIVERY 2008– 2018 1.01 AF PER INCH

CDWA
Est. 1865

2018 OPERATING SEASON

- DITCH START-UP BEGAN MAY 7, 2018
- DITCH FLUSH COMPLETED MAY 10, 2018
- HEADGATES UNLOCKED FOR DELIVERIES MAY 11, 2018
- DITCH CALLED OUT OF PRIORITY JULY 27, 2018

CDWA
Est. 1865

2018/2019 MAINTENANCE

- HEADGATE REPLACEMENTS
- VEGETATION CONTROL/REMOVAL
- BANK RE-SHAPING, CLEANING AND REHABILITATION
- FEMA CLOSE-OUT
- HEADGATE 53 BLOCK WALL REPAIR
- HEADGATE 113 REPAIRS
- LEYDEN FLUSH STRUCTURE IMPROVEMENTS
- AREA 15 DITCH LINING
- HEADGATE 47 INSTALLATION
- SIPHON INSPECTION

CDWA
Est. 1865

WESTWOODS TREE REMOVAL



STANDLEY LAKE



Est. 1865

STONEY CREEK



Est. 1865

HEADGATE 53 BLOCK WALL REPAIR



Est. 1865

HEADGATE 53 BLOCK WALL



Est. 1865

HEADGATE 53 BLOCK WALL REPAIR



Est. 1865

HEADGATE 53 BLOCK WALL



Est. 1865

HEADGATE 113 REPAIRS



LEYDEN FLUSH STRUCTURE



LEYDEN FLUSH STRUCTURE



Est. 1865

LEYDEN FLUSH STRUCTURE



Est. 1865

LEYDEN FLUSH STRUCTURE



Est. 1865

AREA 15 LINING



Est. 1865

AREA 15 LINING (ELKS)



AREA 15 LINING (KICKERS)



HEADGATE 47

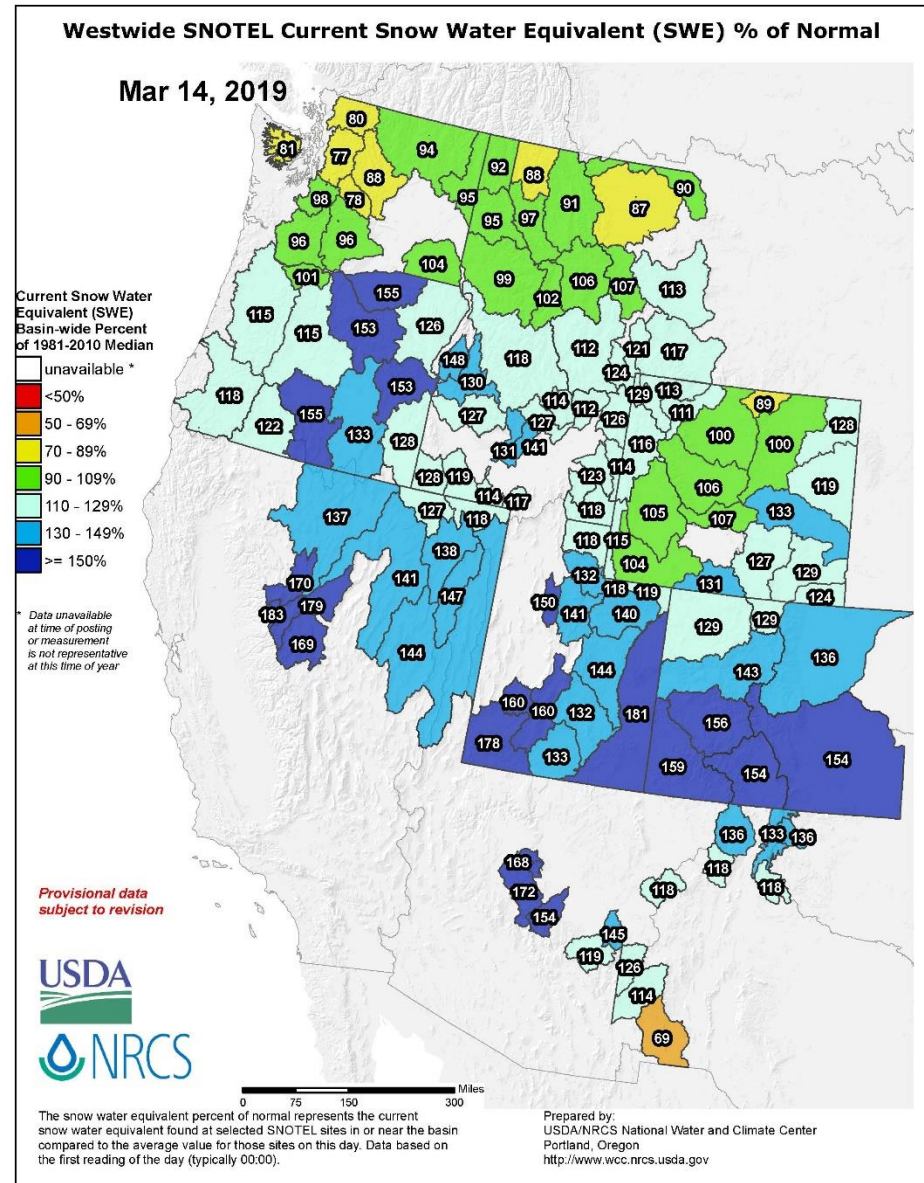


Est. 1865

SIPHON INSPECTION



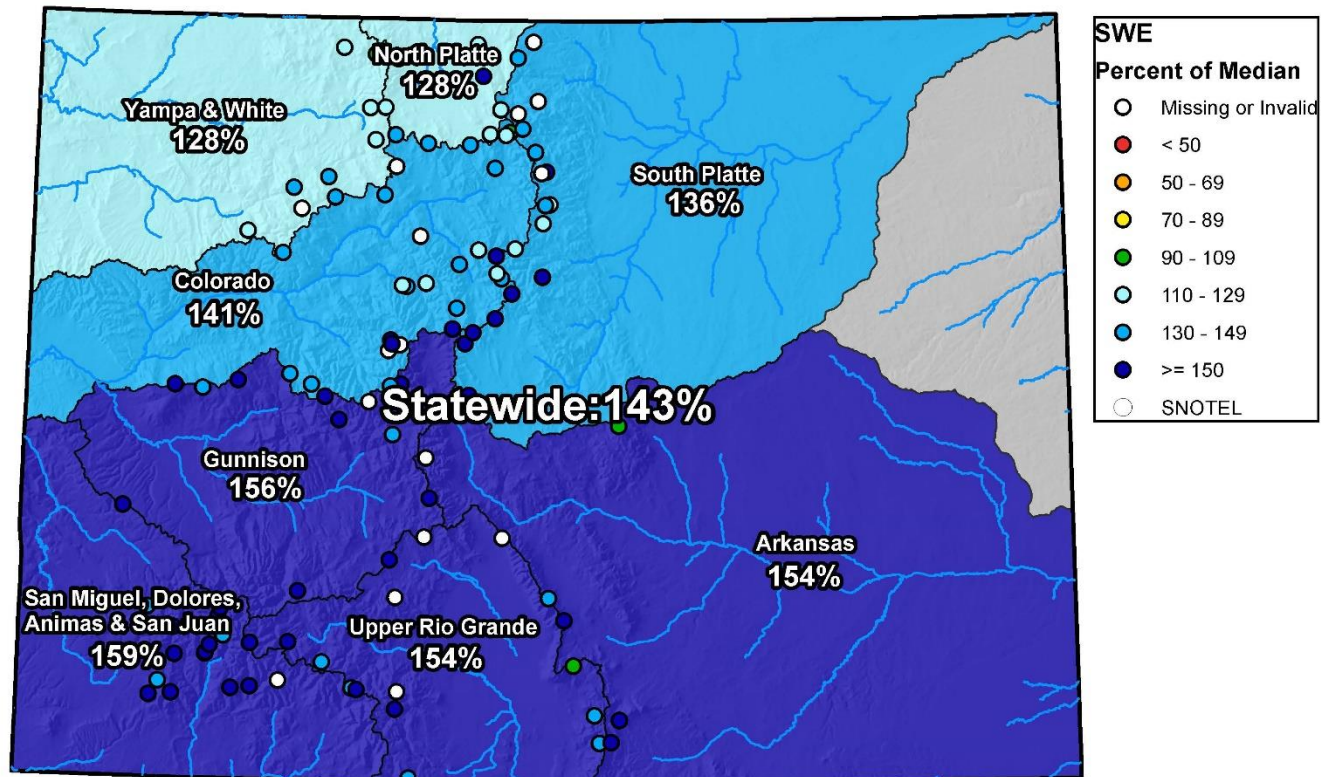
REGIONAL SNOWPACK



STATEWIDE SNOWPACK

Colorado SNOTEL Snow Water Equivalent (SWE) Update Map with Site Data

Current as of Mar 14, 2019



0 25 50 100 150 200 Miles



United States Department of Agriculture
Natural Resources Conservation Service

2019 SNOWPACK

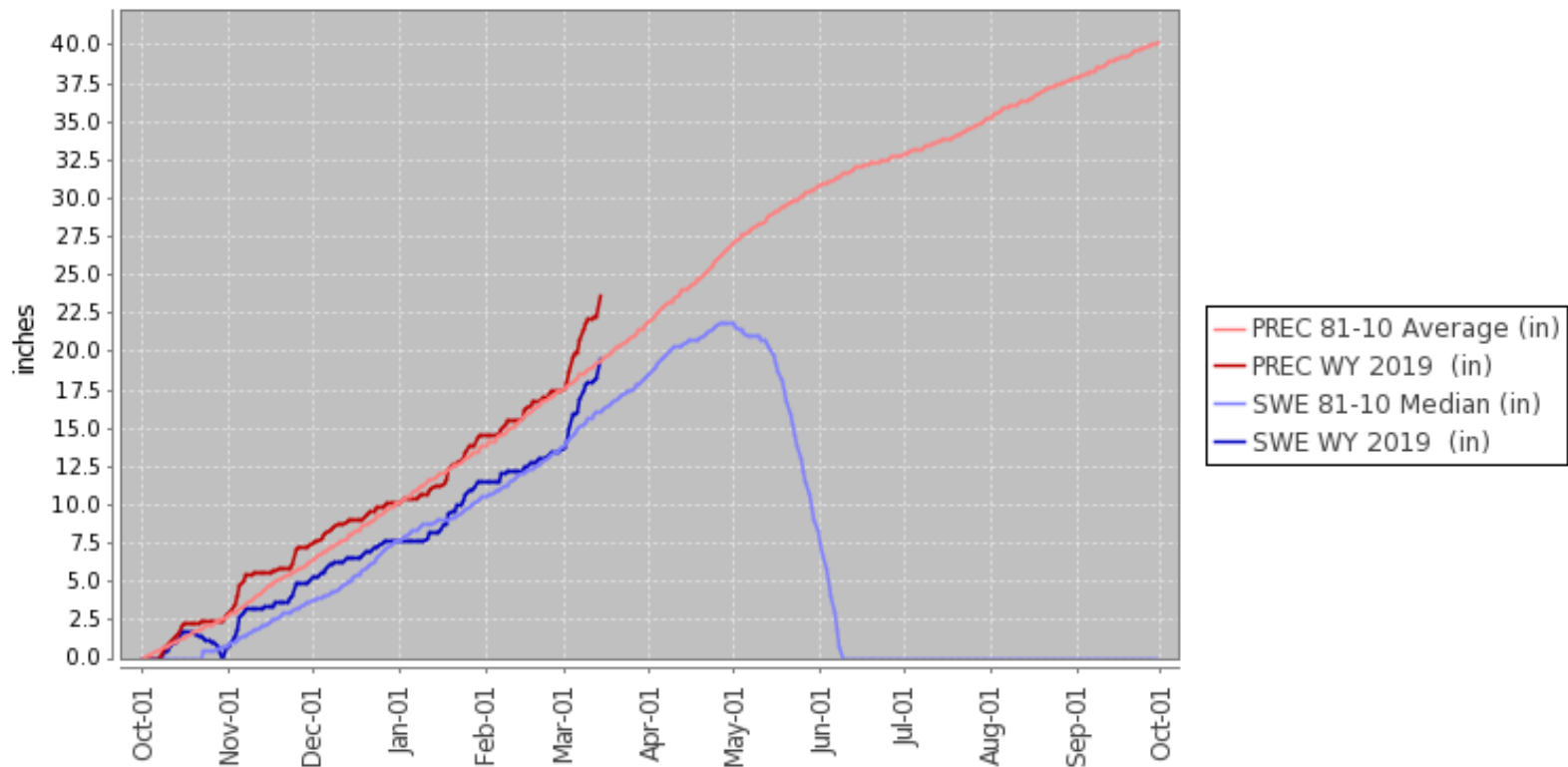
125.11%

(AS OF 03/14/19)

BERTHOUD BASIN

121.11%

Station (335) WATERYEAR=2019 (Daily) NRCS National Water and Climate Center - Provisional Data - subject to revision
Thu Mar 14 07:59:30 GMT-08:00 2019



2018 SNOWPACK

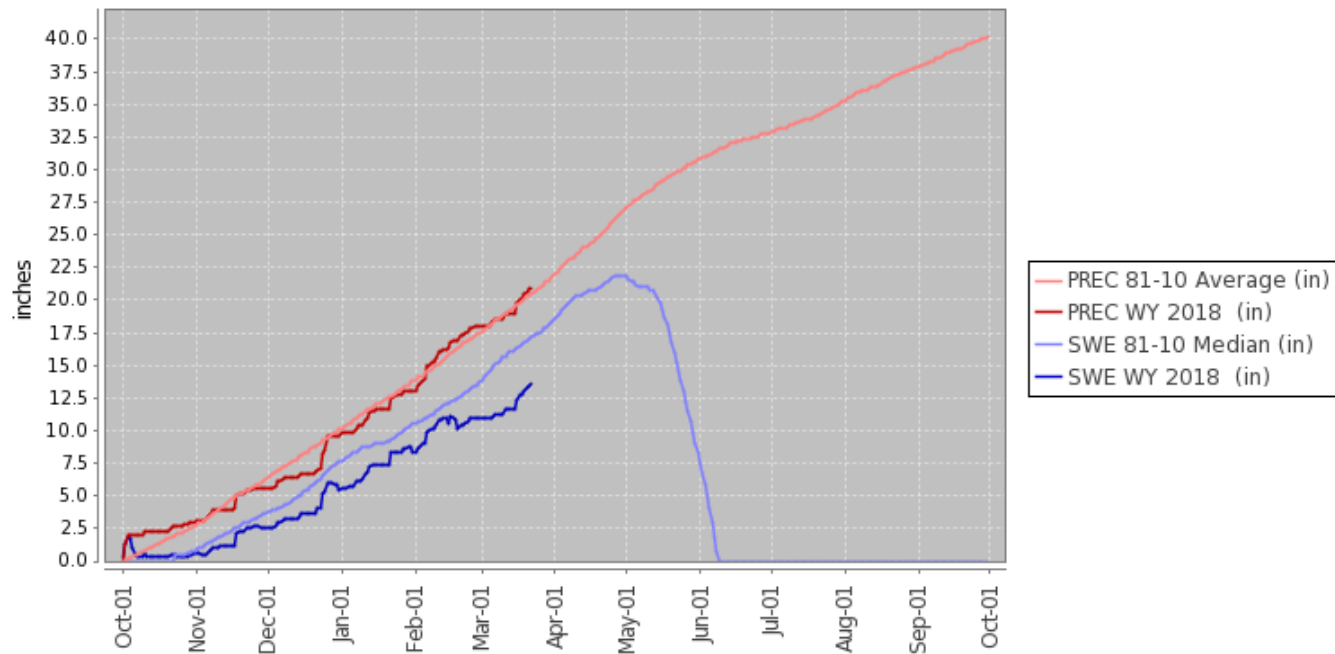
81.63%

(AS OF 03/22/18)

BERTHOUD BASIN

79.07%

Station (335) WATERYEAR=2018 (Daily) NRCS National Water and Climate Center - Provisional Data - subject to revision
Thu Mar 22 06:32:30 GMT-08:00 2018



2019 SNOWPACK

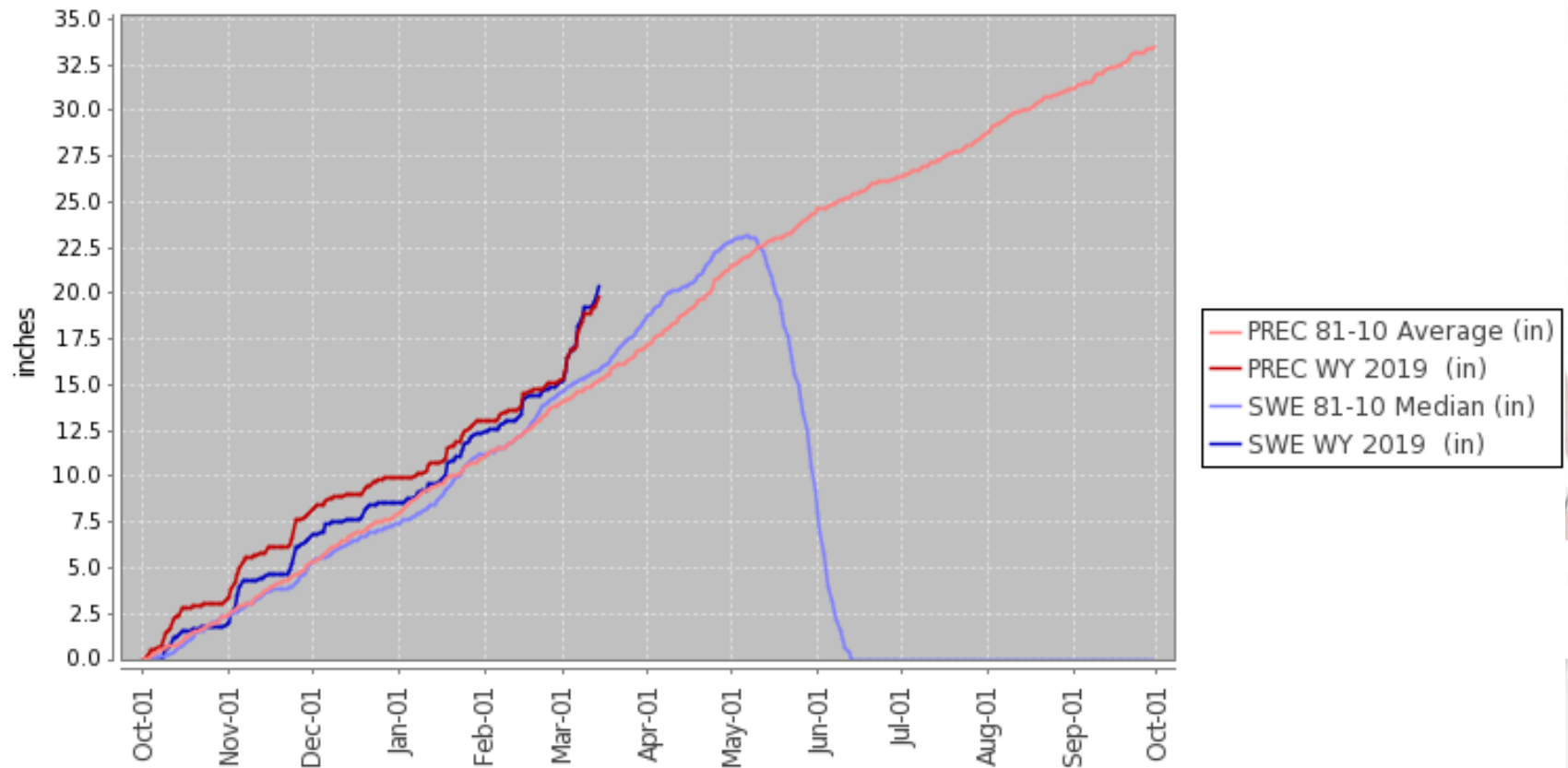
125.11%

(AS OF 03/14/19)

LOVELAND BASIN

129.11%

Station (602) WATERYEAR=2019 (Daily) NRCS National Water and Climate Center - Provisional Data - subject to revision
Thu Mar 14 08:02:03 GMT-08:00 2019



2018 SNOWPACK

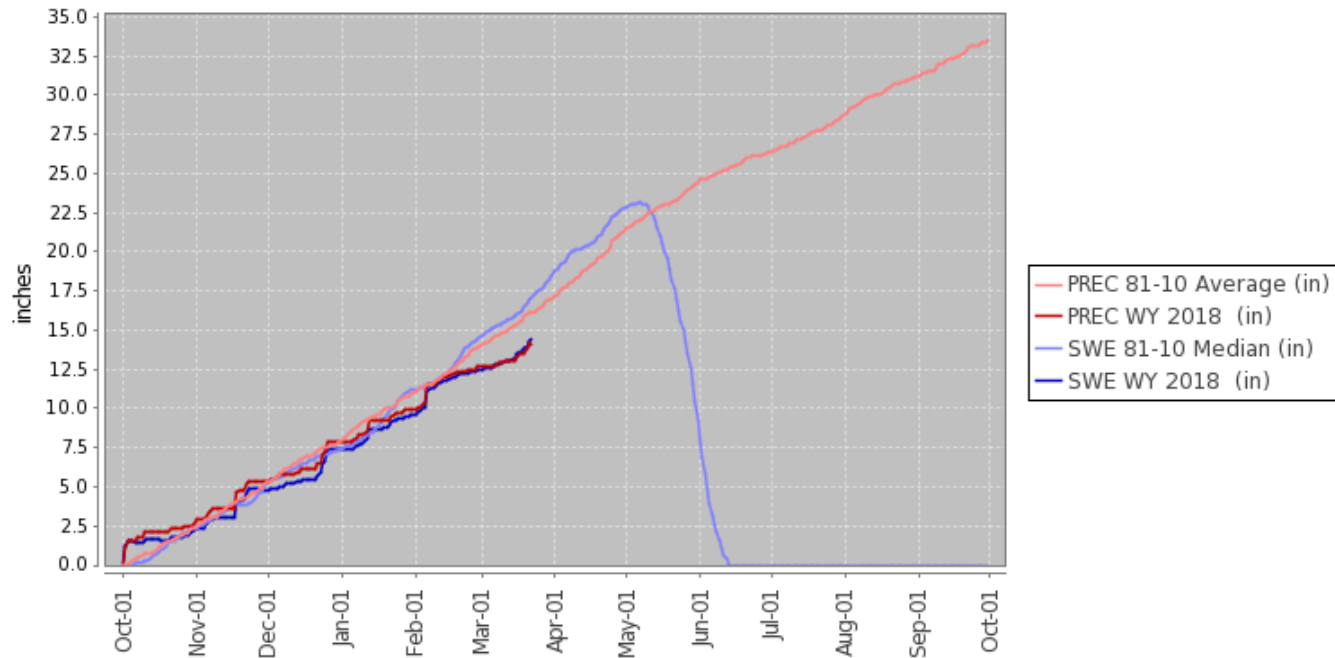
81.63%

(AS OF 03/22/18)

LOVELAND BASIN

84.21%

Station (602) WATERYEAR=2018 (Daily) NRCS National Water and Climate Center - Provisional Data - subject to revision
Thu Mar 22 06:35:01 GMT-08:00 2018



BUDGET UPDATE

REVENUE

	2018 YE Financials	2019 Adopted Budget
WCRA Reimbursements	\$15,696	\$12,000
CDWA Reimbursements	\$14,168	\$5,000
Assessments	\$831,726	\$885,149
Transfer Fees	\$245	\$100
Crossing Fees	\$9,000	\$1,500
Interest Earned	\$441	\$175
Bypass Reimbursements	\$53,897	\$71,067
Miscellaneous Revenue	\$10,006	\$0
Total Revenue	\$935,179	\$964,191

OPERATING EXPENDITURES

	2018 YE Financials	2019 Adopted Budget
Legal Services	\$7,758	\$10,000
Engineering Services	\$38,447	\$30,000
Audit and Accounting	\$6,203	\$9,000
General Services	\$7,444	\$10,000
Contracted Services	\$4,781	\$0
Ditch Maintenance	\$56,924	\$50,000
Vehicle Expense	\$19,712	\$18,000
Communication and IT Services	\$15,450	\$20,000
CIRSA Insurance	\$12,178	\$13,700
Operating Supplies	\$31,540	\$30,000
Energy/Utilities/Fuels	\$28,559	\$29,000
Capital Equipment	\$193,483	\$30,000
Payroll Expenses	\$260,716	\$295,397
WCRA Operating Supplies	\$9,714	\$9,270
Total Operating Expenditures	\$692,909	\$560,367

CAPITAL IMPROVEMENT PROJECTS

	2018 YE Financials	2019 Adopted Budget
Headgate 47, Culvert/Capacity Improvements	\$8,219	\$304,000
Master Plan Update	\$18,589	\$0
Ditch Rehab Hdgt 113	\$25,360	\$0
FEMA Payments	\$71,901	\$33,000
Headgate/Flume Replacement	\$33,461	\$25,000
Area 15 Tree Removal	\$24,460	\$50,000
Hdgt 53 Block Wall	\$583,341	\$0
Leyden Flush Structure	\$197,480	\$0
Ditch Lining	\$57,693	\$1,300,000
Ford St. Siphon	\$0	\$7,500
Legacy Farms Pipe	\$7,687	\$15,000
CIP Reserve		\$62,553
Total CIP Expenditures	\$1,028,191	\$1,797,053

DELIVERY PROCESS

- AMOUNT DELIVERED FROM CLEAR CREEK IS DETERMINED BY THE WATER COMMISSIONER AND IS BASED ON:
 - AMOUNT OF WATER IN CLEAR CREEK
 - CALL PRIORITY
 - NUMBER OF INCH-HOLDERS REQUESTING WATER.
- WILL CONTINUE TO DELIVER WATER TO USERS BASED ON THE PRO-RATA AMOUNT AVAILABLE.
 - PRO-RATA IS BASED ON
 - WATER BEING DELIVERED FROM CLEAR CREEK
 - 25% LOSS
 - NUMBER OF INCHES CALLING FOR WATER.
- INCH-HOLDERS WHO HAVE NOT CALLED FOR WATER, WILL NOT HAVE THEIR GATE UNLOCKED.
- LATERALS/HEADGATES THAT DO NOT HAVE ADEQUATE MEASURING DEVICES WILL NEED TO BE REPLACED.
 - AUTHORITY STAFF WILL SEND A NOTICE IF MEASURING DEVICE NEEDS ATTENTION.
- LATERALS/HEADGATES THAT DO NOT REPLACE OR REPAIR MEASURING DEVICES WITHIN 30 DAYS OF NOTICE, WILL HAVE THEIR HEADGATES LOCKED, UNTIL THE MEASURING DEVICE IS DEEMED ACCEPTABLE.

FLUME REQUIREMENTS

- IN ORDER TO DELIVER WATER, FLUMES MUST BE ABLE TO MEASURE FLOW ACCURATELY.
- GATES WITH FLUMES THAT ARE NOT IN PROPER CONDITION WILL NOT RECEIVE WATER.
- FLUMES SHOULD:
 - BE IN A SET, PERMANENT LOCATION.
 - BE SET LEVEL ACCORDING TO MANUFACTURER RECOMMENDATIONS.
 - WATER MUST FLOW THROUGH THE FLUME, NOT AROUND.
 - NO HOLES, RUSTING, OR VISIBLE DAMAGE.



REMINDERS

- ASSESSMENTS ARE DUE BY APRIL 1, 2019.
- PLEASE CALL OR E-MAIL TO REQUEST YOUR WATER. WE WILL NOT OPEN YOUR GATE WITHOUT A FORMAL REQUEST.
 - 303-423-6010
 - NMCCOY@CHURCHDITCH.ORG
- PLEASE MAKE SURE THAT YOUR FLUME AND LATERALS ARE CLEANED PRIOR TO APRIL 1, 2019 IN PREPARATION OF WATER DELIVERIES.
- IF YOU HAVE QUESTIONS ABOUT THE CONDITION OF YOUR MEASURING DEVICE, PLEASE LET US KNOW.
 - WE WILL NOT DELIVER WATER TO A HEADGATE THAT CANNOT MEASURE IT'S DELIVERIES. PLEASE MAINTAIN THESE STRUCTURES.
- THE WEBSITE WILL BE UPDATED FREQUENTLY WITH UPDATES ON PROJECTS AND WITH IMPORTANT INFORMATION.

WWW.CHURCHDITCH.ORG

Est. 1865

2019 PLANNED MAINTENANCE

- CONTINUE VEGETATION REMOVAL
- ROUTINE DITCH SHAPING AND REHAB
- DITCH LINING
- HEADGATE 47
- LEGACY FARMS
- SIPHON REPAIRS
- WEST 8TH CULVERT
- BYPASS CAPACITY IMPROVEMENTS
- HEADGATE 15(NEW), 29,32,68,72,86,AND 100 REPLACEMENTS

CDWA
Est. 1865

A stylized graphic featuring a green mountain range with a yellow sun or moon behind it, and a blue wavy line representing a river or path. The background is white with several silver, reflective spheres scattered around.

QUESTIONS?

CDWA

Est. 1865