



Lighthouse Quilters Guild

Sew on and Sew Forth



A great start to 2020. Thank you Sandy, Sue, Jacki, Ann, Mary Jo and Betty for sharing your quilting journey with us. You inspired beginner as well as seasoned quilters.

Your stories were so personal, informative and interesting. A bigger than ever shout-out to Laura Sanders who volunteered to serve as VP of Planning for 2020. I'm sure she will be a real asset to our board. Don't forget, if you have any ideas for speakers you think might be of interest, please share your ideas with her. We are growing again with several new members. If any of you see anyone you don't recognize, introduce yourselves. Cindy Barrett, Lois Gauntt, Claudia Grace, Lori Jutzonka, Linda Ronczka and Cindy Vermeer, welcome to our guild. Pins for members are custom made at \$5 each. Contact me to place your order by phone at 994-0134 or email at Lyle7120@att.net. A reminder that Valentine's Day is approaching... don't forget a little something for your sweethearts. Until next month.... *I wonder if the snow loves the trees and fields, that it kisses them so gently? And then it covers them up, snug, you know, with a white quilt....and perhaps it says, "Go to sleep, darlings, till the summer comes again".* Lewis Carroll
Pat Henningfeld

February 2020 Inside This Issue

Board Members 2020 Programs Facebook Program Weather Closing Reminder	2
Charity Quilt Projects National Quilting Day 2020 Quilt Camps	3
2020 Workshops August Schoolhouse Workshop	4
January 2020 Meeting Minutes	5
Congrats to Ruth Rohlfing Lucky Winner Newest Members Quilt Studio 2020	6
Save the Date 202 Quilting Events	7
Hospitality Committee Hospitality Message	8

February and March birthdays

Shirley Graham Feb 1
Rhonda Westmoreland Feb 8
Jodi Blackburn Feb 12
Kathy Lijewski Feb 13
Betty Suiter Feb 18
Janet Geisner Feb 21
Mary Risler Feb 22
Carol Uebe Feb 22
Jacky Tomkins Feb 26
Louise Shipley Feb 28
Ginger Wanserski Feb 28



Pat Rigby Mar 2
Yvonne Parks Mar 2
Mary Dumont Mar 15
Patti Dunn Mar 19
Autumn Latimore Mar 19
Dianna Zimmerman Mar 19
Cindy Barrett Mar 27
Lorrie Mielke Mar 30

Next Meeting Monday February 24, 2020 7 pm

Things to Bring:

- Welcoming Smile
- Name tag
- Show and tell

Articles for Newsletter

The deadline for submitting articles is
on or before the 8th of each month.

Submit your articles to:

Sharon Matusevicius at
matusevicius.1@att.net

Maria Rivest at
joeandmaria97@icloud.com

2020 LHQ Board Members

President

Pat Henningfeld

Vice President of Programs

Kime Heller-Neal
Catherine Neal

Vice President of Planning

Laura Sanders

Vice President of Membership

Pat Brown

Secretary

Kristen Wengert

Treasurer

Tracy Koenen

Hospitality

Kitty Friend
Kathy Lijewski

Librarian

Gina Knierim

Historian

Kirsten Weiss

Publicity

Pat Henningfeld

Social Media

Sharon Matusevicius
Maria Rivest

Newsletter/Website Coordinators

Sharon Matusevicius
matusevicius.1@att.net
Maria Rivest
joeandmaria97@icloud.com



Don't forget to share posts on Facebook with your friends.



2020 Programs

Feb. 24

Frieda Anderson "To Dye For" <https://www.friestyle.com>

Mar. 30

Mary Hermanson "Kaleidoscopic Fiber Art Designs – Making Magic With Fabric"

Apr. 27

Judy Anich Workshop: "Printing on Fabric"
Lecture: "Retrospective"

May 18

Sue Nichols Workshop: "The Scalloped Edge"
Workshop: "Drawing Fabulous Feathers"
Lecture: "The Quilt Collaboration of Sue Nichols and Pat Holly"

June 29

Linda Halpin Workshop: "Homestead Star Quilt"
Lecture: "Borders on Parade"

July 27

Picnic and Rummage Sale

Aug. 31

Schoolhouse Workshops

Sept. 28

Mary Hertel (Marney) "Paper Piecing"

Oct. 26

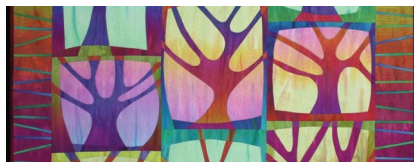
Donna Mather Workshop: "Rocky Mountain Bear Claw"
Lecture: "Judy Niemeyer Introduction and Trunk Show"

Nov. 30

Holiday Party

Program Note

- A one hour lecture and power-point presentation. Frieda will share with you how she dyes her gorgeous hand dyed fabric. This is the step by step process of gradation dyeing that is detailed in her book; Fabric to Dye For.
- Along with all lectures Frieda will bring many of her quilts for display as well as her patterns and fabrics for sale.



Winter Meeting Cancellations

When schools or businesses are closed due to weather, there will be no guild meeting.

LIGHTHOUSE CHARITY QUILT PROJECTS FOR 2020

By February 5, 27 NICU blankets have been delivered to All Saints!! These came from Lighthouse and First Friday Quilters. THANK YOU!!! Nine blankets and quilts were given at our January meeting.

Here is where they will go: 5 blankets to All Saints NICU, 1 to Foster Kids, 3 anywhere needed.

THANKS! Four members will distribute quilts this year: Nancy Larsen for Women's Resource Center:

Baby to Lap size--36x36 to 55x70, pieced, cheaters, fleece, crocheted and knitted items. Regina

Scott Brooks for Quilts for VA Home in Union Grove: Twin size or a little larger but not much larger, fabrics can be either for men or women. These are due at our October 26 meeting! Barbara Vallone

for Quilts for the Community which includes: All Saints NICU, Racine, and Children's Hospital,

Milwaukee: Baby to Lap size--36x36 to 55x70, St. Monica's Home plus Habitat for Humanity and

other local needs. Small Lap--45x50 to Nap Lap--55x70 Operation Snuggles – quilts for soldiers'

children, Camp Serenity, and Wounded Warriors. Baby to twin bed--36x36 to 60x75. TC Wiley for

Foster Children's Project. Baby to Large Lap--40x40 to 55x70. Please find our Charity Quilt BLUE

WASH BASKETS where there will be: * A slip of paper for you to say WHERE your quilt goes and if

it's WASHED or not * A place to leave your quilt (two wash baskets!) before OR after Show & Tell.

Quilt size can range from 36 x36 to 60 x 75—see sizes above. Please keep your biggest quilt to twin

bed size. THANK YOU for making this project a success. Nancy Larsen, Regina Scott Brooks, Barb

Vallone, TC Wiley

NATIONAL QUILTING DAY IS SATURDAY, MARCH 21!

- STRIP PIECING AT RESURRECTION! Come at 9 am with your sewing machine, extension cord, pillow to sit on, thread, scissors and whatever you'll need to make our easy-peasy blocks! ALL fabric strips and foundation squares are provided! Irons and ironing boards are provided, too. This one is FREE but you do have to bring a finger snack to share and your own lunch. We Strip until 4 pm and, with YOUR help, we will again make over 300 blocks! Come for a fun day of piecing. If you want to just come and iron, that's fine, too!! We stop with the piecing! Squaring up will be done by the Irish Quilting Elves!! These blocks will be made into lap size sturdy quilts for Camp Serenity and other places that need a warm quilt. Contact Barbara Vallone, 262-639-8185, qltingb@gmail.com

QUILT CAMPS FOR 2020

Quilt Camp: a gathering of quilters and others who want to spend time at actual CAMPS and not hotels or retreat centers. All of the locations have or had summer camp for children. They are as far away as Ellison Bay, WI and as close as The DeKoven Center, Racine WI. For more information please contact Barbara Vallone, 262-639-8185, qltingb@gmail.com

~ Date and location for March ~

There are several openings for this one. If you have never gone to a quilt camp, come in March!! Lots of options, it is not far away, we quilt and sleep in the same building, and I can send the registration form directly to you because it is in my computer!! Barbara Vallone

LUTHERDALE: Lauderdale Lakes near Elkhorn

March 4, 5, 6, 7, & 8, 2020 Arrival. Price Options: Wed, Mar 4, 12 noon ~ \$300; Thu, Mar 5, 10 am ~ \$250, Fri, Mar 6, 10 am ~ \$180. Quilt and sleep in the adult-friendly Watson Center ~ no bunk beds!


Meals a nice walk away in the Dining Hall.


Contact Lutherdale directly at 262-742-2352 to register

Summary of our exciting 2020 Workshops. Clip and save for a quick reference for the whole year.

"The Scalloped Edge" with Sue Nickels
May 18th, 2020 - 8:30am-11:30am

"The Scalloped Edge" will show how to make this attractive and classic finish. Students will learn to draft, stitch, and place along the edge of the quilt.



 \$45

"Printing on Fabric" with Judy Anich
April 27th, 2020 - 10am-3pm


This is a hands-on workshop. We will be printing with leaves and stenciling on fabric. Leaves, stencils, paints, and paint medium will be provided.




 \$10

"Drawing Fabulous Feathers" with Sue Nickels
May 18th, 2020 - 1:30pm-4:30pm

"Drawing Fabulous Feathers" will explore the techniques Sue uses to custom design feathers. This will free students from having to use stencils or trace from books.



 \$45

"Homestead Star Quilt" with Linda Halpin
June 29th, 2020 - 9pm-4pm



Proficiency is All Levels. This full day workshop starts with the how-to of Fabric Selection then continues with precision machine piecing techniques that result in cutaways that can cleverly be used to make a second quilt out of the leftovers. That's two quilts in one workshop! What a treat!




 \$50

"Rocky Mountain Bear Claw" with Donna Mather
October 26th, 2020 - 9:30am-3:30pm

This Judy Niemeyer block was redesigned from the North American Bear Paw (out of print 2013) and easily works as a table runner or pillowcase. It features four paws in one block and uses floating points, curved paper-piecing, smart corners, and template layout sheets.



 \$35

ALL workshop sign-up sheets will be available at the February meeting. Please make sure to pay for the workshop in the month before (if you miss the meeting contact Catherine Neal email (lighthousequiltersguild@gmail.com), text, or call (262-497-2883).

Schoolhouse Workshops - August 2020

Do you have an idea for a simple short project? We'd love for you to teach it to the guild this August for our Schoolhouse Workshops. This year, instead of just demonstrations we want real workshops where guild members can get time to work on or complete a project at the guild. We'll have members sign up beforehand so if any small prep-work or supplies are needed they can be started or brought before the August meeting. This could be a great opportunity to make items for the 2021 Lighthouse Legacies Guild Boutique or for members to get a head-start on Christmas projects.

Lighthouse Quilt Guild General Meeting Minutes

January 27, 2020 at 7pm

President Pat Henningfeld called the meeting to order. Announcements: New members and guests were welcomed.

Program: **Then and Now:** Kime Heller-Neal and Catherine Neal introduced each of the guild members sharing their quilting journeys.

- Sandy Kruppstadt has been sewing for 60+ years, starting with clothing then transitioning to quilting. She focuses her talent on miniature quilts.
- Sue Lerch taught home economics for a while, making clothes to set an example for her students. Then she turned to making baby quilts, to be used and loved. She's made many trip around the world baby quilts, most of her work was made as gifts.
- Jacki Mekemson has been sewing since 4th or 5th grade. Started quilting in early 2000s. Mostly full-sized quilts.
- Ann Smith started with quilts for her young sons. She is currently working on quilts that use up the scraps from previous projects.
- Mary Jo Diem's Nana taught her to sew when she was 10 ½ yrs old. She has a history of taking a decade or more to finish a quilt! That's persistence!
- Betty Suiter was a late starter. She was 36 when she started quilting, and taught her mother how to quilt. She makes bed sized quilts and loves doing applique, drawing the pattern, hand dyeing the fabric, and hand appliqueing.

Business:

- The guild had a table at the Rob Appell show to talk to guests about the guild. A membership, and other goodies was raffled off and won by Claudia Grace. Pat Henningfeld, Grace Kragness, Kristen Wengert, and Tracy Koenen manned the table. Kristen, Grace, and Maria Rivest provided quilts to display.
- Quilt show update:
 - o 2017 show had \$4796 in proceeds. 2019 had \$2616 in proceeds, a significant reduction.
 - o Potentially move the show to September (from October). This has not been decided, but is being considered based on October being a popular month for other quilt and craft shows. Perhaps September would have less competition for people's time so the show would have more admissions.
- Tracy reviewed the 2020 Budget
 - o The budget item for gifts for custodians was eliminated.
 - o Regina Scott Brooks suggested the membership pass the hat in October for gift for the custodians since they do an excellent job for the guild.
 - o Garage sale proceeds are not reflected in budget, historically has not been included as the amount varies significantly each year.
 - o 2020 programs cost is \$1100 higher than 2019.
 - o Speakers are more expensive
 - o Coming from greater distance so cost is higher for travel and lodging. Local talent has been mined over the last several years so we have to reach out further geographically.
 - o The cost of the room used for workshops has increased
 - o Dues have not been raised, will use guild savings to cover any shortfall.
 - o Jeanne Steidtman moved to approve the budget, Barb Vallone seconded the motion. A vote was held and the motion passed, the budget was approved.
- VP Planning - Laura Sanders has volunteered to fill this position
- Membership – Pat Brown is looking for donations to give away for the monthly drawings, items you think others in the guild would enjoy, spare fat quarter, etc. Names were drawn, questions asked, and prizes awarded.
 - o Pat will not be printing membership cards as they have fallen out of favor. If you would like one, please let Pat know and she will print one for you.
- Kitty Friend introduced the Hospitality committee.
- Special hospitality program – guild members and guests sat at tables based on birthdays, and decorated a sheet cake baked by the hospitality committee members.
- Hospitality is still looking for volunteers. Sign up on the sheets or reach out to Kitty Friend or Kathy Lijewski.

Show and Tell: A nice variety of quilts were shown.

- Grace Kragness announced a winter quilt show on Saturday Feb 29 hosted by Wisconsin Museum of Quilts & Fiber Arts at Washington County Fair Park Pavilion.
- Regina Scott Brooks reminded the group to make quilts for veterans for twin sized quilts mad of cotton or flannel, no pillow cases. Give them to Regina in October, not before as she doesn't have room to store them. Size needed is 63x87, no bigger than 70 x 90.

Next board meeting is February 3, 7pm at Lutheran Church of the Resurrection.

The meeting adjourned at 8:45pm, when the group decorated their cakes and enjoyed mingling.

Respectfully submitted

Kristen Wengert Secretary

Congratulations Ruth Rohlfing



We are pleased to announce that Ruth Rohlfing's wall quilt, "Photo Inspiration: Bruges, Belgium - Canal," was juried into QuiltCon 2020.

QuiltCon is a national show organized by the Modern Quilt Guild. Approximately 2000 quilts are entered into the show. Some are judged, some not. About 600 modern quilts will be on display, including 400 juried in from MQG members around the world. Ruth's quilt will hang with other contemporary quilts in the Minimalist Design category at QuiltCon from February 20 - 23 in Austin, Texas.

Prior to this show, Ruth's quilt was on display at our quilt show last fall. It hung with 7 other quilts that were designed to interpret a photograph. This group of 8 quilts was juried into the AQS show in Grand Rapids, Michigan last August. Ruth wants to thank her Erie Street Quilters group, as well as all of her teachers and fellow quilters, for setting a high bar of excellence and for keeping the old art of quilting fresh and exciting with new challenges and techniques.

Lucky Winner



The winner of the Lighthouse Quilters Guild gift bag at the Rob on the Road show on January 10 was Claudia Grace from Racine.

Many thanks to Kristen Wengert and Grace Kragness for helping with the table promotion at the show.

Pat Henningfeld

Newest Members

Last month we welcomed **SIX** new members to the guild. Please look for these ladies at the meetings and introduce yourself



Cindy Barnett
Lois Gauntt
Claudia Grace
Lori Jutzonka
Linda Ronsczka
Cindy Vermeer



Linda has already volunteered to be on the hostess committee this month!

QUILT STUDIO TIME IN 2020

DATES: April 2, 3, & 4 ~ August 6, 7, & 8 ~ November 5 & 6. **TIME:** 9 am to 9 pm each day. **COST:** \$5 per day ~ \$1 on Friday from 9 to 3 for the First Friday Quilters' meeting and \$5 from 3 to 9 pm. **BRING:** your quilting supplies including an extension cord, a finger snack to share, and your lunch and supper. **PROVIDED:** irons and ironing boards, coffee, tea, paper plates, napkins and **LOTS OF FUN!** We had 42 quilters come in January! It was amazing! Contact Barbara Vallone, 262-639-8185, qltingb@gmail.com



SAVE THE DATE

Spring Quilt Show presented by the Pride of the Prairie Quilt Guild
 March 14 & 15
 Saturday 9-5 pm Sunday 9-4 pm

More than 300 gorgeous quilts
 Raffle Baskets, Silent Auction, Vendors, Certified Quilt Appraisals, Bake Sale, Quilt Book and Magazine Sale

This guild has been putting on terrific shows for 30 years. Since the show only happens once every 2 years, PLEASE
 – Save the date! TIP - you could take a picture of this for the details, and add it in your calendar now!

Location:

In the Southwest Suburbs at Richland Grade School

1919 Caton Farm Road in Crest Hill, IL

Just 3 miles north of I-80 on route 7 (aka Weber Road) then west on Caton Farm Road one half mile.

More info at www.prideofprairie.org and @PrideofthePrairieQuilters on Facebook

2020 Quilting Events

Thru Mar. 31. Vintage Quilt Exhibit. Delafield History Center, 426 Wells St., Delafield. 9 am.-noon. Wednesdays only.

Feb. 6-Apr. 26. Infinite Ivory & Blue Exhibit. The Museum of Quilts & Fiber Arts. N50 W5050 Portland Rd., Cedarburg. Sun. 12-4 p.m.; Wed.-Sat. 10 am.-4 p.m. \$8.

Feb. 15. Lutherdale 1st Annual Fabric Frenzy. Lutherdale. N7891 Hwy 12. Elkhorn. 10 am.-4 p.m. \$2.

Feb. 29. Winter Quilt Show. Washington County Fairgrounds, 3000 Cty Hwy PV, West Bend. 9 am.-4 p.m. \$5.50.

Mar. 7-29. Women's Voices Quilt Show (Southport Quilters Guild). Kenosha Public Museum, 5500 1st Ave., Kenosha. **Mar. 28. Southport Quilt Day.** Children's activities, workshops and Frieda Anderson afternoon lecture. Mon.-Sat., 10 am.-5 p.m.; Sun., 12-5 p.m. Free (donations accepted)

Mar. 13-14. Evergreen Quilt Show. Community Campus, 600 Cardinal Lane, Green Bay. Fri., 10 am.-6 p.m.; Sat., 9 am.-3 p.m. \$6.

Mar. 14-15. A Symphony of Color (Pride of the Prairie Quilters). Richland Grade School, 1919 Canton Farm Rd., Crest Hill, Ill. Sat., 9 am.-5 p.m.; Sun. 9 am.-4 p.m. \$8.

Mar. 21-22. Medford Area Quilt Show. Medford High School, 1015 Broadway Ave. Sat., 10 am.-4 p.m.; Sun., 10 am.-3 p.m.

Mar. 28-29. Crazy Quilters Guild 33rd Annual Show. Parkview Middle School, 930 N. Rochester, Mukwonago. Sat., 9 am.-5 p.m.; Sun., 10 am.-4 p.m. \$6.

Lighthouse Quilters Guild
P. O. Box 081153
Racine, WI 53406-1153
www.lighthousequiltersguild.com



Newsletter Editors / Website Coordinators

Sharon Matusevicius, matusevicius.1@att.net Maria Rivest joeandmaria97@icloud.com

February Hospitality

Lu Wayne Snow
Sarah Gabby
Nancy Larson
Marge Martin
Sharon Matusevicius
Rhonda Westmoreland
Lori Slatterly
Kathy Simon
Linda Ronzka



We are still short on Hospitality Volunteers for several months. The sheets will be out again by the Membership Table. Please remember that part of your membership responsibility is participating on Hospitality one month per year. We need 10-12 members every month.

In 1971, Jonathan Holstein opened the first quilt exhibition in a major museum. It was entitled, "Abstract Design in American Quilts" and helped launch the craft into a realm of appreciation and criticism it had not known before.