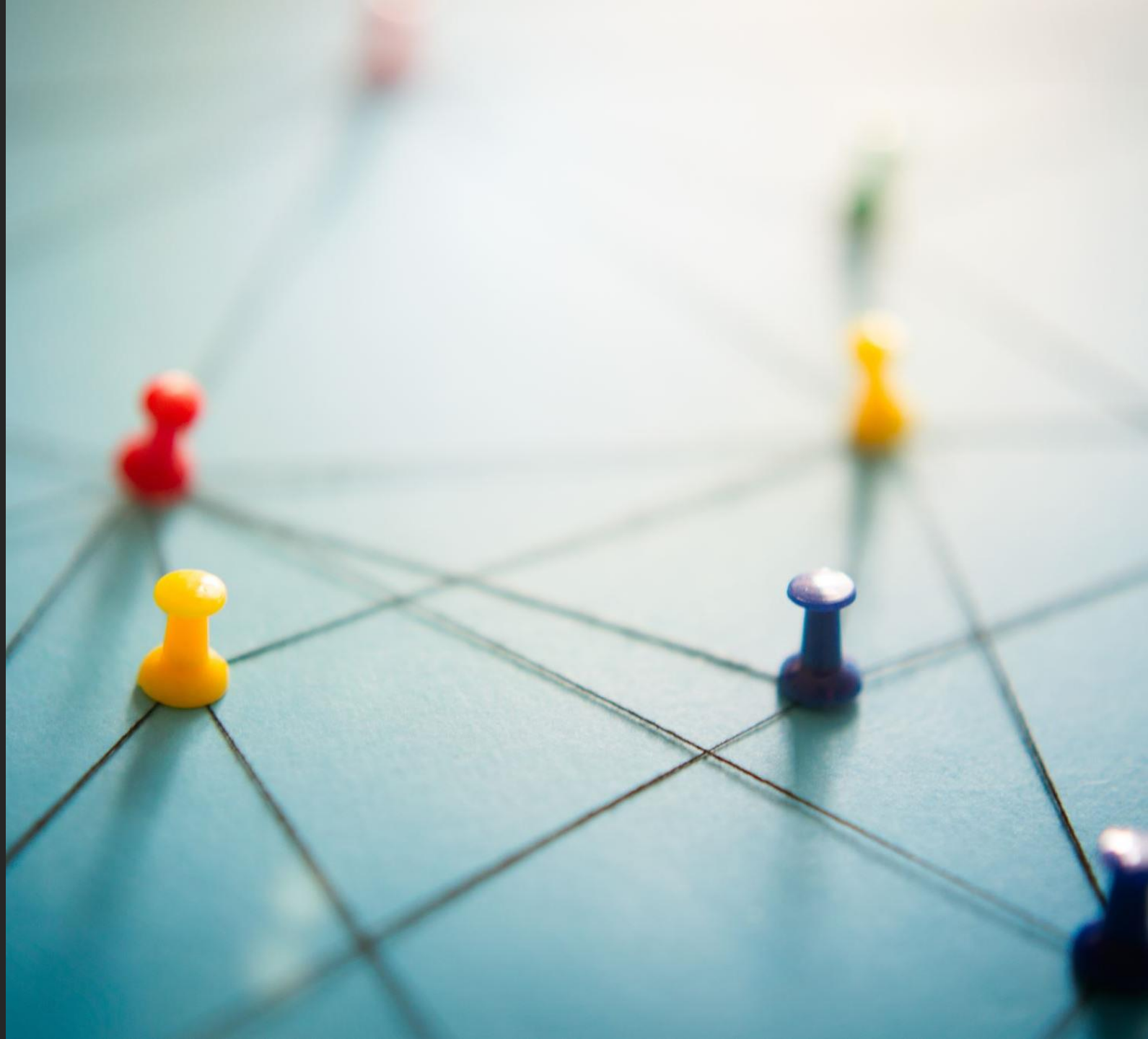

HOW TO TAKE THE NEXT STEP IN YOUR CAREER WITH TACOMA COMMUNITY COLLEGE WORKFORCE EDUCATION

NIKKI SNOWKING, LORRIE
ANN, & PWINT KOKO



Essential Workers of Tacoma
and the Hilltop- Thank you!

Thank You



Unemployment rates and earnings by educational attainment, 2019

Unemployment rate (%)

Median usual weekly earnings (\$)





GUIDED PATHWAYS-
HOW TCC CAN
ASSIT
YOU ON THE PATH
TO YOUR SUCCESS

STUDENT RESOURCES



TCC Help Center Website

- Academic Advising Zoom Lobby
- CHAP Housing Assistance
- Emergency Financial Grants
- Laptops
- Resource Directory
- Food Pantry
- Access Services Support for Those Needing Accommodations
- Counseling
- Technical Assistance
- Tutoring Schedule a Virtual Appointment
- Your Workforce Navigator

NEED HELP
PAYING FOR
TUITION &
BOOKS?
WORKFORCE
IS HERE TO
HELP!



Receiving Food Benefits

Receiving TANF

Receiving Unemployment Benefits

Previously Received Unemployment
Benefits

Low-Income

Working in Childcare & Need Additional
Training

Transitioned Out of Military

WORKFORCE
EDUCATION UTILIZES 5
GRANTS TO PAY FOR
TUITION AND BOOKS
TARGETED FOR
STUDENTS WHO
HAVE/ARE:

HOW DO I
BECOME A
WORKFORCE
STUDENT?
START NEXT
QUARTER
WEBSITE

startnextquarter.org

QUESTIONS?

Contact The Workforce Education Department If
You Need Any Assistance:

 253.566.5188

Email: tccworkforce@tacomacc.edu

Virtual Lobby: Monday - Wednesday 10am- 3pm,
Thursday 10am - 5:00pm, & Friday 10am-2pm

www.tacomacc.edu/workforce