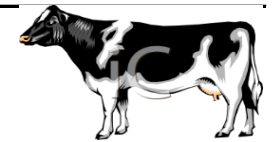


# LIVESTOCK COOPERATIVE AUCTION MARKET ASSOCIATION NORTH JERSEY, INCORPORATED



225 WEST STIGER ST HACKETTSTOWN, NJ 07840

Tuesday, December 31, 2024

**While Market reports reflect the majority of livestock sold, there are instances where animals do not fit reporting categories and may not be included**

LIVESTOCK REPORT					
Animal		NO.	HIGH	LOW	AVG.
Bulls	lb				
Calfs	lb	36	6.90	0.10	3.83
Easy Cows	lb				
Cows	lb	12	1.17	0.20	1.00
Feeders	lb	3	1.45	0.80	1.28
Heifers	lb	3	1.18	1.08	1.12
Steers	lb				
Roasting Pigs	lb	5	0.80	0.25	0.63
Boars	lb				
Sows	lb				
Butcher Hogs	lb				
Ewes	lb	1	0.80	0.80	0.80
Lambs	lb	11	2.65	1.50	2.50
Rams	lb				
Sheep	lb	14	1.22	0.90	0.97
Billy	hd	2	355	295	325
Goats	hd	3	230	205	220
Kids	hd				
Nanny	hd	2	295	190	2.43
Weather	hd				
Goat Family	hd				
Lambs	hd				
Sheep Family	hd				
Roasting Pigs	hd				
Alpaca	hd				
TOTAL		92			

POULTRY REPORT					
Animal		No.	HIGH	LOW	AVG.
Rabbits	lb	17	3.25	2.00	2.48
Broilers	lb				
Brown Eggs		20	5.50	4.00	
Duck Eggs		5	7.50	6.75	
Quail Eggs					
Blue/Green Eggs		5	7.00	5.00	
Goose Eggs					
White Eggs		1	4.00	4.00	4.00
Misc Items	hd	52	65	5	13.2
Bantam	hd	8	6	5	5.5
Broilers	hd				
Bunnies	hd	2	5	5	5
Call Ducks	hd				
Chicks	hd				
Chucker	hd				
Ducks	hd	4	11	8	10.3
Dove	hd				
Goose	hd	2	30	30	30
Guinea Keets	hd				
Guinea Fowl	hd				
Guinea Pigs	hd				
Heavy Fowl	hd	50	10	4	6
Leghorns	hd				
Peacock	hd				
Pheasant	hd				
Pigeons	hd	7	8.5	8.5	8.5
Pullets	hd	5	18	18	18
Quail	hd	14	9	2	3.43
Rabbits	hd				
Roosters	hd	35	16	7	12.7
Silkies	hd				
Turkeys	hd				

HAY REPORT			
TYPE OF HAY	No. loads	HIGH	LOW
Alfalfa	3	6.75	6.50
Mixed	12	12.25	3.75
Orchard	2	4.25	4.00
Timothy			
Grass	19	10.25	2.75
Mulch	3	1.50	1.50
Clover			

GRAIN REPORT			
TYPE OF GRAIN	No. Bags	HIGH	LOW
Ground Corn	31	11.00	9.50
Shell Corn	6	10.50	10.50
Ear Corn			
Oat Feed	10	12.50	12.50
Wheat Feed			

STRAW REPORT			
TYPE OF STRAW	No. Loads	HIGH	LOW
Oat			
Wheat			
Rye			

MISC FARM RELATED CONSIGNMENT			
ITEM	NO.	HIGH	LOW
Firewood			
Posts			

**SALE SCHEDULE: 10am Hay 1030am Poultry 2pm  
Goats, Lambs/Sheep Calves, Feeders, Hogs and  
Cattle (we run straight through)**