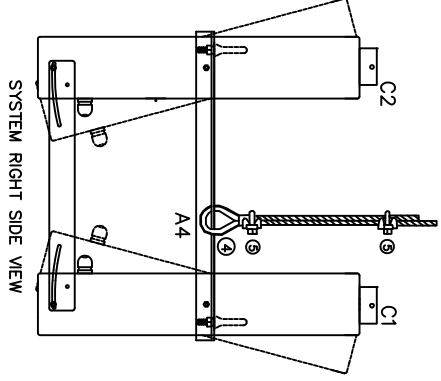
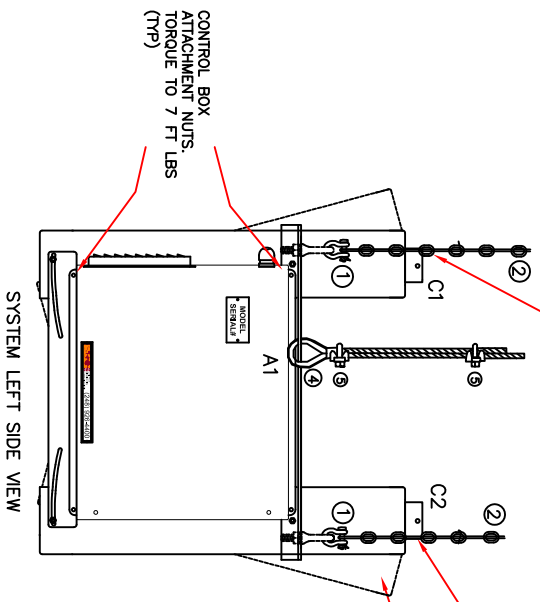


CHAIN AND UPPER AND LOWER SHACKLES SHALL BE OF CORROSION RESISTANT MATERIAL AND BE RATED FOR OVERHEAD LIFTING WITH A WORKING LOAD LIMIT OF 3000 LBS. VERTICAL CHAIN LOADING ONLY.

5/16" GRADE 80 CHAIN WITH (2) TOP & BOTTOM) 3/8" GALV BOLT NUT & COTTER ANCHOR SHACKLE-(3000 LB WLL)

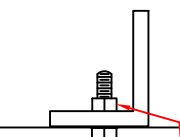


SUPPORT FROM EACH EXEBOLT WITH EQUAL CHAIN LENGTHS.

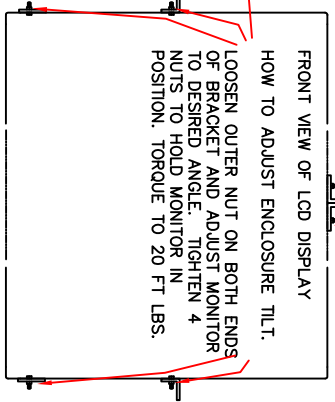
(2) SAFETY CABLES REQUIRED FOR EACH DISPLAY. LOOP AROUND BUILDING STEEL. (2) CROSBY CLAMPS AT EACH CONNECTION. CABLE SHALL NOT BE ROUTED OVER SHARP EDGES. NOTE: DO NOT LEAVE MORE THAN 2" OF SLACK IN SAFETY CABLE.

MINIMUM CLEARANCES BETWEEN BOARD AND NEARBY SURFACES:
TOP: 6"
BOTTOM: 12"
SIDES: 36"
FACE: 36"
DO NOT MOUNT BOARD ABOVE EQUIPMENT WHICH GENERATES HEAT.

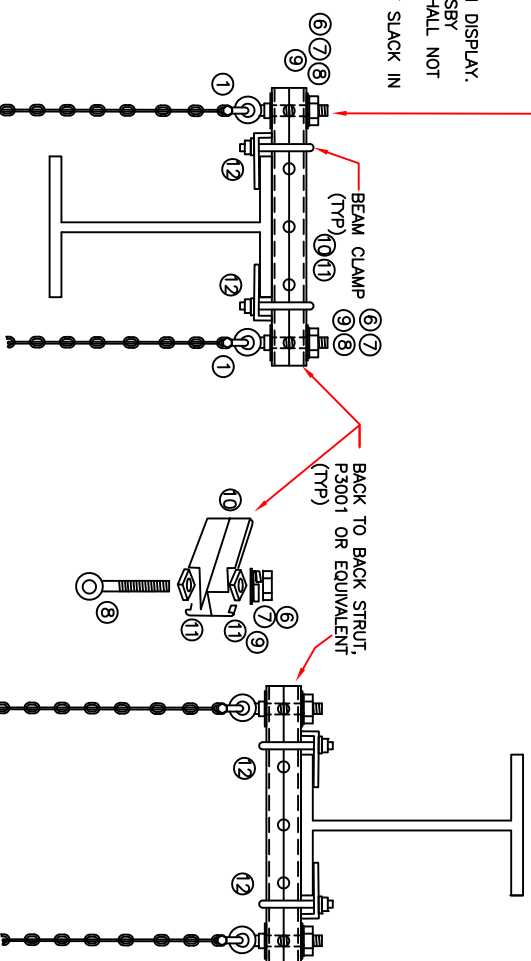
CLOSE UP VIEW OF OUTER NUT. TORQUE TO 20 FT LBS (TYP)



FRONT VIEW OF LCD DISPLAY HOW TO ADJUST ENCLOSURE TILT. LOOSEN OUTER NUT ON BOTH ENDS OF BRACKET AND ADJUST MONITOR NUTS TO DESIRED ANGLE. TIGHTEN 4 POSITION. TORQUE TO 20 FT LBS.



1/2" THREAD DIA. SHOULDER EXEBOLT, WASHERS, LOCK WASHER, NUT, WORKING LOAD LIMIT MIN. 2200 LBS. (TYP)



TYPICAL ATTACHMENT OF BOARD SUPPORT CHAIN TO BUILDING STEEL

STATIC CONTROLS 990 FLEXIBLE ANDON BOARD MOUNTING (NOT TO SCALE)
1. LOCATION AND ELEVATION OF EACH UNIT TO BE DETERMINED IN FIELD PER SKETCH PROVIDED BY THE GM PROJECT ENGINEER.
2. MOUNTING METHOD(S) SHOWN ARE FOR REFERENCE ONLY. FINAL MOUNTING METHOD SHALL BE APPROVED BY CCRW AND PLANT ENGINEERING REPRESENTATIVES.

Installation contractor responsible for all local practices/codes and structural load verification

DB Size	System Foot Print Size	MAX (AMPS)	Weight (LBS)
70" SS LCD Monitor, with Control Box w/Music	40.5"H x 76"W x 29"D	7	210
70" DS LCD Monitor, with Control Box w/Music	40.5"H x 76"W x 29"D	10	370
65" SS LCD Monitor, with Control Box w/Music	37.5"H x 71"W x 29"D	7	170
65" DS LCD Monitor, with Control Box w/Music	37.5"H x 71"W x 29"D	10	290
55" SS LCD Monitor, with Control Box w/Music	31.5"H x 61"W x 29"D	6	150
55" DS LCD Monitor, with Control Box w/Music	31.5"H x 61"W x 29"D	9	250
42" SS LCD Monitor, with Control Box w/Music	26"H x 51"W x 29"D	5	130
42" DS LCD Monitor, with Control Box w/Music	26"H x 51"W x 29"D	8	210
Stand alone Control Box w/Music	19.5"H x 22.5"W x 8.6"D	3	50

SCC Static Controls Corporation
30460 WINYOW ROAD
WYOMING, 82195-4400
FAX (248) 926-4412

Customer Approval: M/T
By: [Signature]
Date: [Date]

Released for Prod. (W/20/2008)
Scale: N/A

Part # SCC 990
Flex 990w - Inst - SCC
990W-INST-SCC


SYM	REVISION	APP	DATE
A	ADDED SAFETY CABLE NOTE CHANGED TORQUE ON CONTROL BOX NUT.	BG	01/23/16

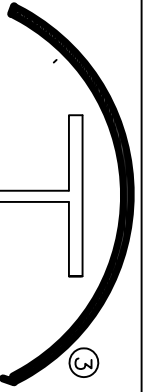
S/M	REVISION	APP. DATE
A		

Install of one SCC 990 Flexible Andon Board & 8 Speaker Installation Hardware

#	Description:	Manufacture	Part/Model Number	Unit of Measure	Purchase Quantity
1	3/8" 3000lb. WLL Galvanized Bolt Nut & Cotter Anchor Shackle	Fastenal Pricing	0504876	each	8
2	5/16" Grade 80 Chain 500 foot drum	Fastenal Pricing	45034	per foot	80
3	1/4" Class 6 x 19 Fiber Core Wire Rope 500 foot need about 80 per board	Fastenal Pricing	45576	per foot	80
4	1/4" Closed Galvanized Wire Rope Thimble	Fastenal Pricing	43443	each	4
5	1/4" Drop Forged Wire Rope Clip	Fastenal Pricing	43423	each	8
6	1/2" High Strength Nut (Furnished with item 8)	Fastenal Pricing	33895	each	4
7	1/2" Heavy Lock Washer	Fastenal Pricing	42445	each	4
8	1/2"-13 x 4-1/2" Shank Length Hot Dipped Galvanized Drop Forged Eye Bolt	Fastenal Pricing	33847	each	4
9	1/2" High Strength Flat Washer	Fastenal Pricing	33847	each	4
10	Unistrut Channel: 1-5/8" x 2 3/4", 12 Gage, Back-to-Back, Slotted Holes P3001SH	Unistrut (Atkore)	P3001SH	1' (10' sticks)	1
11	Unistrut Flat Plate Fitting: Width 1-5/8" x 1-5/8", Thickness 1/4" P1064	Unistrut (Atkore)	P1064	each	8
12	Unistrut Beam Clamp: 1-5/8" x 5" P2786	Unistrut (Atkore)	P2786	each	4
13	Andon Speaker, SPEAKER STATIC CNTRL 977-SPKR-R EXTERNAL	SCC	1032-006X	each	8
14	1/4" Beam Clamp: Speaker Installation	Appleton	BH-500	each	100
15	Speaker Cable/Wire: Order in 1,000' spools	Belden	8471	per foot	1,000
16	Bridle Rings and Saddles: 1/4"-20 x 7/8" 2 Boxes (50/Box)	B-Line	BRS-32A		60
17	Cat5e Cable: General Cable GenSPEED® 5000, 1,000 ft. Pull-Pac® II, Non-Plenum, Blue For one board using 333feet of 1000foot roll	General Cable			333
18	Wire Nuts: For Speaker Terminations			each	16

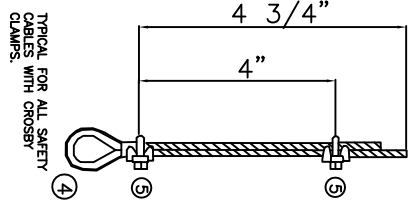
Installation contractor responsible for all local practices/codes and structural load verification

 30460 WIXOM ROAD WYANDOMI, MI 48186 FAX (248) 926-4412	Customer Approval By: _____ Date: _____	This FILEXIBLE ANDON BOARD INSTALLATION DRAWING VERSION W
	Released for Prod. (U/20/2008) Scale: N/A	Page 1 of 3 990W-INST-SCC



1 - BEAM OF BUILDING STEEL

- (2) SAFETY CABLES REQUIRED FOR EACH DISPLAY BOARD SYSTEM. LOOP AROUND BUILDING STEEL.
- (2) CROSBY CLAMPS AT EACH CONNECTION. CABLE SHALL NOT BE ROUTED OVER SHARP EDGES.
- NOTE: DO NOT LEAVE MORE THAN 2" OF SLACK IN SAFETY CABLE.

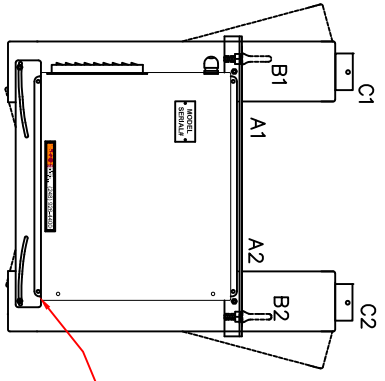


TYPICAL FOR ALL SAFETY CABLES WITH CROSBY CLAMPS.

RIGGING POINTS - A1, A2, A3, A4 WITH INSTALLATION CONTRACTORS HARDWARE. HOLE SIZED FOR 1/2" HARDWARE (0.53").

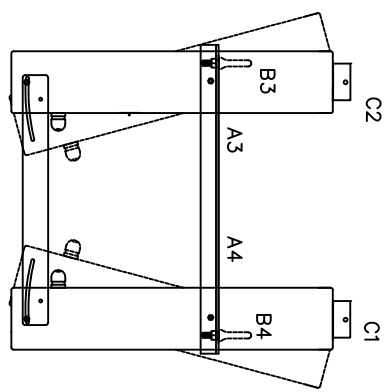
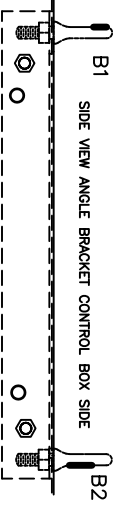
MOUNTING POINTS - B1, B2, B3, B4 WITH CHAIN AS SHOWN ON PAGE 1.

SAFETY CABLE POINTS - A1 TO A4, AND C1 TO C2
NOTE: DO NOT LEAVE MORE THAN 2" OF SLACK IN SAFETY CABLE.

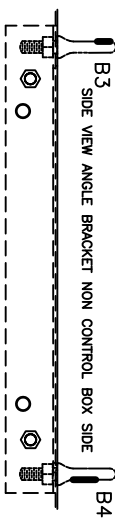


CHANGE TO NYLON NUT IN 4 POINTS TO 7 FT LBS

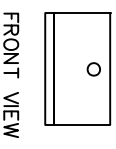
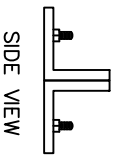
SYSTEM LEFT SIDE VIEW - CONTROL BOX SIDE
 TOP VIEW ANGLE BRACKET CONTROL BOX SIDE



SYSTEM RIGHT SIDE VIEW NON CONTROL BOX SIDE
 TOP VIEW ANGLE BRACKET NON CONTROL BOX SIDE



SAFETY CABLE BRACKET C1 AND C2

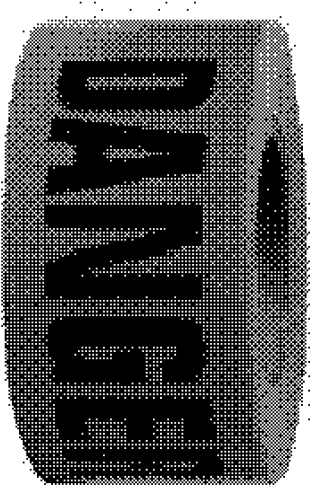


BARRICADE PERIMETER TAPE

RED DANGER TAPE (INDICATES HAZARD TO PEOPLE); CROSSING THIS BARRICADE COULD LEAD TO INJURY. NEVER CROSS RED BARRICADE TAPE UNLESS GRANTED PERMISSION BY AN AUTHORIZED EMPLOYEE.

SOME EXAMPLES INCLUDE:

- OVERHEAD WORK, Aerial Lift, Mobile Crane, ETC.
- RIGGING APPLICATIONS



SEE WEB LINKS FOR MORE INFO.

- http://www.constructionproducts.com/andonboard/documents/wiretopcableinstall_000.pdf
- <http://www.andonboard.com/andonboard/andonboard.html>
- <http://www.andonboard.com/andonboard/andonboard.html?articleid=862&itemid=178>

WARNINGS AND APPLICATION INSTRUCTIONS.

- THIS APPLICATION REQUIRES TWO CROSBY WIRE ROPE CLAMPS - INSTALLATION INSTRUCTIONS
- 1st CLAMP APPLY APPROXIMATELY 3/4" FROM DEAD END BOLT IS PLACED OVER DEAD END OF 1/4" WIRE ROPE. LIVE END REST IN THE SADDLE.
- 2ND CLAMP APPLY NEAR THE THIMBLE.
- NOTE: ALL NUTS TIGHTEN EVENLY, ALTERNATING TURNS.

Installation contractor responsible for all local practices/codes and structural load verification

<p>Stable Controls Corporation</p> <p>30460 WIXOM ROAD WIXOM, MI 48189 FAX (248) 926-4412</p>	Customer Approval	By	Date	Project #	Scale
	MT		11/20/2010	990W-INST-SCC	1/2" = 1'-0"
<p>THE FLEXIBLE ANDON BOARD INSTALLATION DRAWING VERSION W</p>		<p>Page 1 of 3</p>			

SYM	REVISION	APP	DATE
A	ADDED SAFETY CABLE NOTE CHANGED TORQUE ON CONTROL BOX NUT.	BG	01/23/16