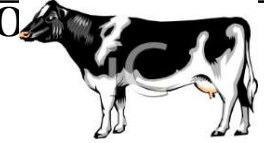


LIVESTOCK COOPERATIVE AUCTION ASSOCIATION OF

NORTH JERSEY, INCORPORATED

225 WEST STIGER ST HACKETTSTOWN, NJ 07840

DECEMBER 6th 2022



While Market reports reflect the majority of livestock sold, there are instances where animals do not fit reporting categories and may not be included

LIVESTOCK REPORT

| Animal | | NO. | HIGH | LOW |
|---------------|----|------------|--------|-------|
| Calves | lb | 19 | 2.50 | 0.20 |
| Cows | lb | 13 | 1.10 | 0.19 |
| Easy Cows | lb | | | |
| Steers | lb | | | |
| Feeders | lb | 3 | 0.95 | 0.39 |
| Bulls | lb | 3 | 1.05 | 0.98 |
| Heifers | lb | 4 | 0.90 | 0.85 |
| Roasting Pigs | lb | | | |
| Boars | lb | 1 | 0.01 | 0.01 |
| Sows | lb | 1 | 0.10 | 0.10 |
| Butcher Hogs | lb | 3 | 0.77 | 0.77 |
| Sheep | lb | 28 | 2.15 | 0.95 |
| Lambs | lb | 48 | 3.15 | 0.80 |
| Roasting Pigs | hd | 4 | 70.00 | 70.00 |
| Pot Belly | hd | | | |
| Sheep Family | hd | | | |
| Sheep | hd | | | |
| Lambs | hd | | | |
| Billy | hd | | | |
| Goats | hd | 38 | 250.00 | 20.00 |
| Kids | hd | | | |
| Rams | hd | | | |
| Alpaca | hd | | | |
| | | | | |
| | | | | |
| TOTAL | | 165 | | |

POULTRY REPORT

| Animal | | No. | HIGH | LOW |
|------------------|----|-----|-------|-------|
| Rabbits | lb | 5 | 2.75 | 2.00 |
| Broilers | lb | | | |
| Brown Eggs | | 7 | 4.00 | 3.00 |
| Duck Eggs | | | | |
| Blue/ Green Eggs | | 2 | 5.50 | 4.75 |
| Goose Eggs | | | | |
| Quail Eggs | | | | |
| Bantam | hd | 2 | 2.00 | 2.00 |
| Broiler | hd | | | |
| Bunnies | hd | 5 | 9.00 | 6.00 |
| Chicks | hd | | | |
| Ducks | hd | 2 | 20.00 | 13.00 |
| Misc Items | hd | 8 | 42.50 | 3.00 |
| Guinea Fowl | hd | | | |
| Guinea Pigs | hd | 46 | 1.00 | 0.50 |
| Heavy Fowl | hd | 95 | 13.00 | 4.00 |
| Silkie | hd | | | |
| Roosters | hd | 53 | 20.00 | 3.00 |
| Pheasant | hd | 2 | 2.00 | 2.00 |
| Pigeons | hd | 54 | 7.00 | 6.50 |
| Pullets | hd | | | |
| Quail | hd | | | |
| Rabbits | hd | 5 | 8.00 | 6.00 |
| Turkeys | hd | 20 | 15.00 | 10.00 |
| Chucker | hd | | | |
| Goose | hd | | | |
| Peacock | hd | | | |
| Call Ducks | hd | | | |
| | | | | |
| | | | | |

HAY REPORT

| TYPE OF HAY | No. loads | HIGH | LOW |
|-------------|-----------|------|------|
| Alfalfa | 1 | 6.25 | 6.25 |
| Mixed | 1 | 4.50 | 4.50 |
| Orchard | | | |
| Timothy | | | |
| Grass | 4 | 4.00 | 1.50 |
| Mulch | | | |
| Clover | | | |

LARGE ROUND BALES

| TYPE OF HAY | No. Bales | HIGH | LOW |
|-------------|-----------|------|-----|
| Alfalfa | | | |
| Grass | | | |
| Mixed | | | |

STRAW REPORT

| TYPE OF STRAW | No. Loads | HIGH | LOW |
|---------------|-----------|------|-----|
| Oat | | | |
| Wheat | | | |
| Rye | | | |

GRAIN REPORT

| TYPE OF GRAIN | NO. OF BAGS | HIGH | LOW |
|---------------|-------------|------|-----|
| Ground Corn | | | |
| Shell Corn | | | |
| Oat Feed | | | |

MISC FARM RELATED CONSIGNMENT

| ITEM | NO. | HIGH | LOW |
|----------|-----|-------|-------|
| Firewood | 2 | 50.00 | 50.00 |
| Posts | | | |
| | | | |

SALE SCHEDULE: 10am Hay 1030am Poultry 2pm Goats, Lambs/Sheep Calves, Feeders, Hogs and Cattle (we run straight through)