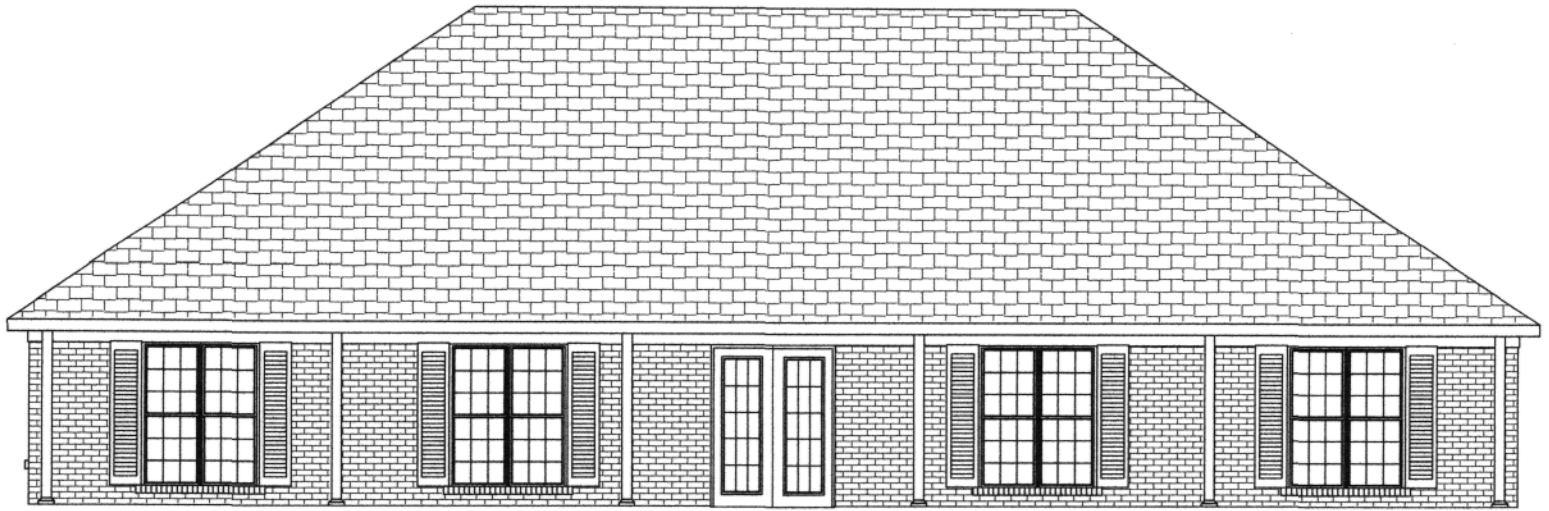
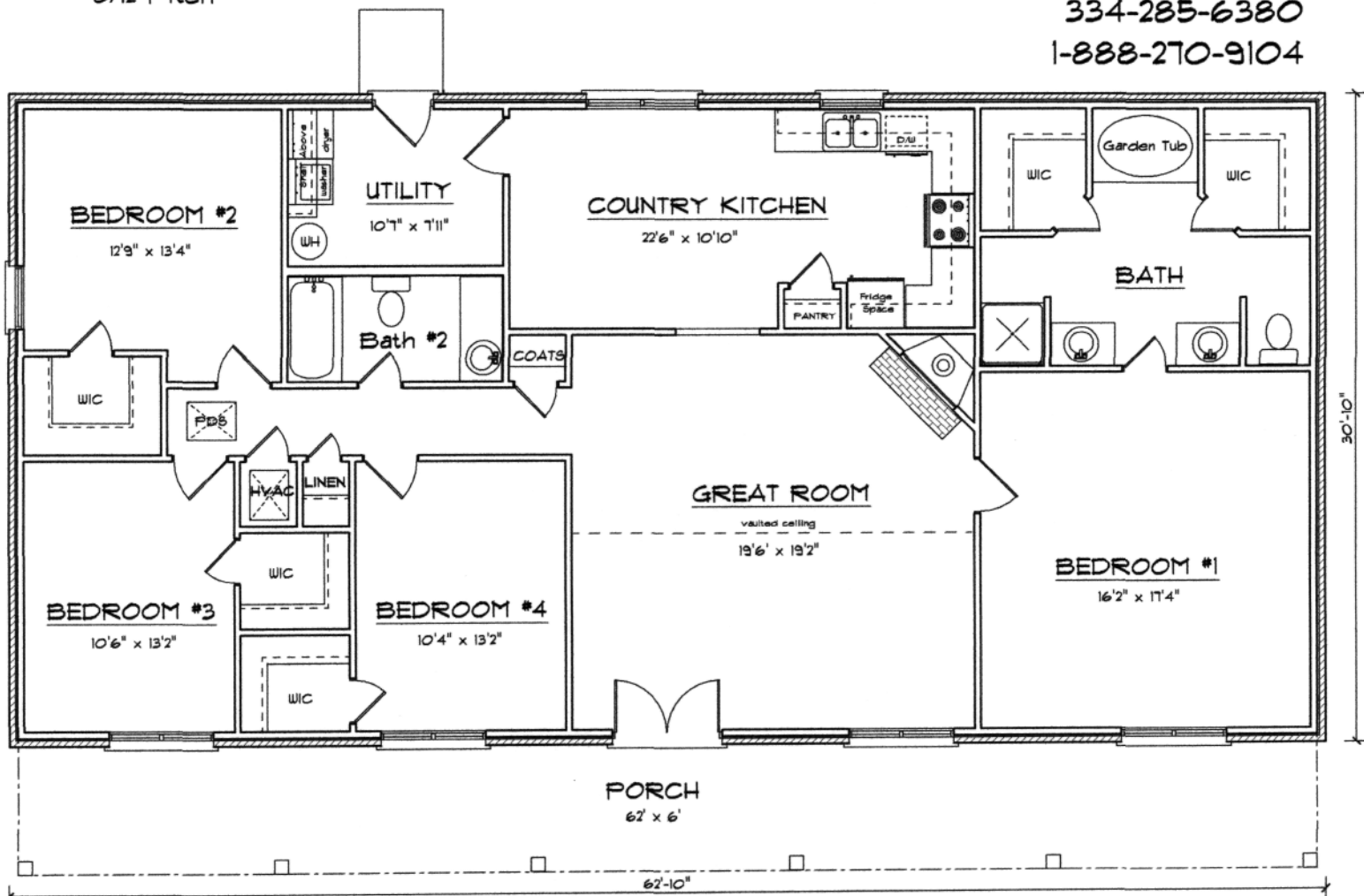


THE NEW ORLEANS



Living 1937 sq. ft.
 Porch 372 sq. ft.
 TOTAL 2309 sq. ft.
 ** 8/12 Pitch

Alabama Better Built Homes, Inc.
 2203 Howard Murfee Blvd.
 Prattville, AL 36066
 334-285-6380
 1-888-270-9104



MEASUREMENTS SHOWN ARE NOT INTENDED TO BE EXACT, THEREFORE ARE NOT GUARANTEED AS SHOWN