

1

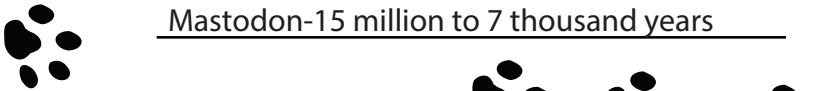
Missouri State Museum Scavenger Hunt

Follow the clues, solve the puzzles, answer the questions. Visit the Missouri State Museum Tour Desk with the finished sheet to receive your reward.

Side 1: Resources Hall

These titans of the ice age had great girth, how many years ago did they tread Missouri's earth?
(2 possible answers)

Mammoth-15 million to 10 thousand years
Mastodon-15 million to 7 thousand years



2

3



In kindergarten ABCs rule! The founder is someone we all should know. Who?

Susan Elizabeth Blow

This Missouri rock formed around 345 million years ago. Use the number substitution cypher to find the unknown.

HINT: The Capitol is covered in it!

L	I	M	E	S	T	O	N	E
12	9	13	5	19	20	15	14	5

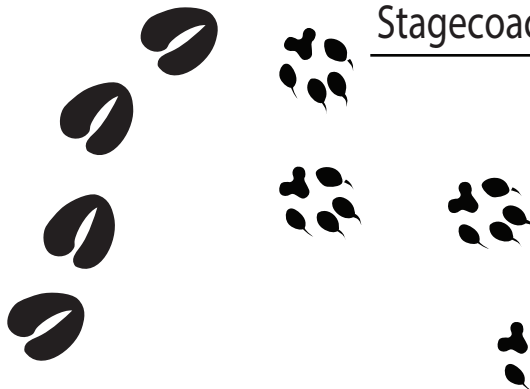
Number Substitution Cypher

A	B	C	D	E	F	G	H	I	J
1	2	3	4	5	6	7	8	9	10
K	L	M	N	O	P	Q	R	S	T
11	12	13	14	15	16	17	18	19	20
U	V	W	X	Y	Z				
21	22	23	24	25	26				

4

For a pocket full of coins, this could carry mail and passengers to Des Moines.

Stagecoach



5

Deep underground looking for treasure, this tool made mining more of a pleasure.
(2 possible answers)

Go to the History Hall to complete side 2!

Electric blasting machine OR pneumatic drill

Missouri State Museum Scavenger Hunt

Side 2: History Hall



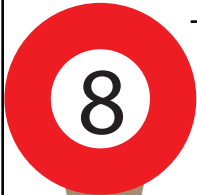
These lawmakers honored those who served our country bravely by land and by sea (1919). Who were they?

Fiftieth General Assembly



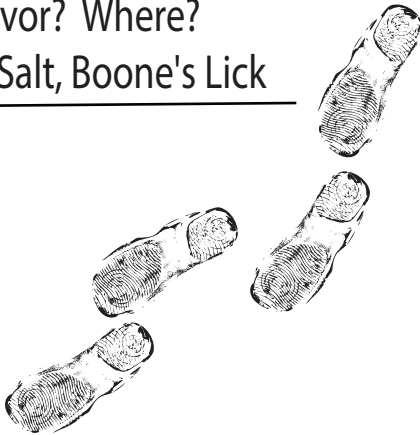
This mineral is used for flavor, two sons mined it for much needed savor? Where?

Salt, Boone's Lick



When the crew heard this 800-pound chime, they knew the time. Can you tell the date and location of this famous bell?

1944, Veterans' Gallery



Missourians fought in battles galore. This stop represents which war?

HINT: Use the acrostic below to find the stop.

Civil War

Fought
Long
And
Solved
Hard
Puzzles
One
Incredible
Natural
Talent!

Vocabulary

An ACROSTIC is a poem or puzzle that uses a letter in each line to form a word.

Do you know your Roman numerals? Missouri's WWI nurses were honored on this date--1934. Can you find the plaque and write down the Roman numerals?

MCMXXXIV



BONUS! Use the number substitution cypher on Side 1 to translate the following:

I	T	S		Y	O	U	R		H	I	S	T	O	R	Y
9	20	19		25	15	21	18		8	9	19	20	15	18	25