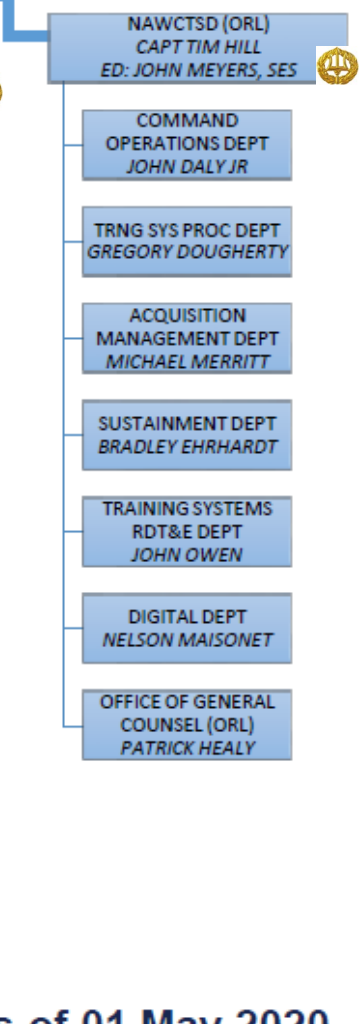
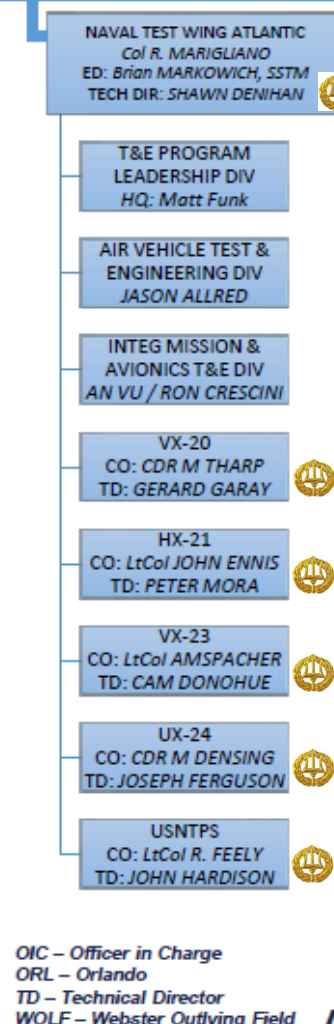
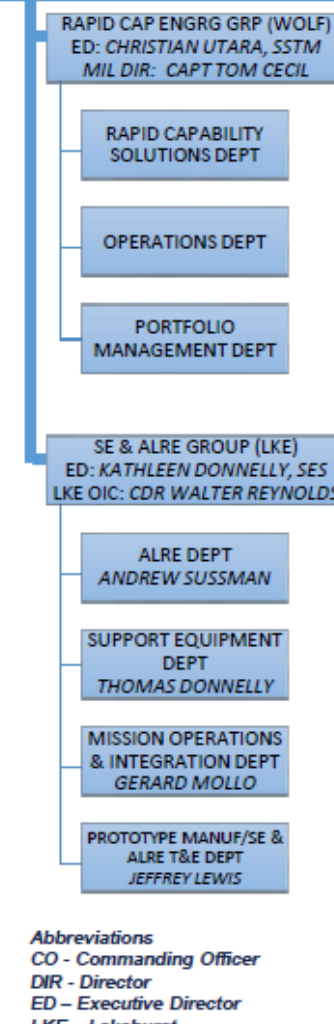
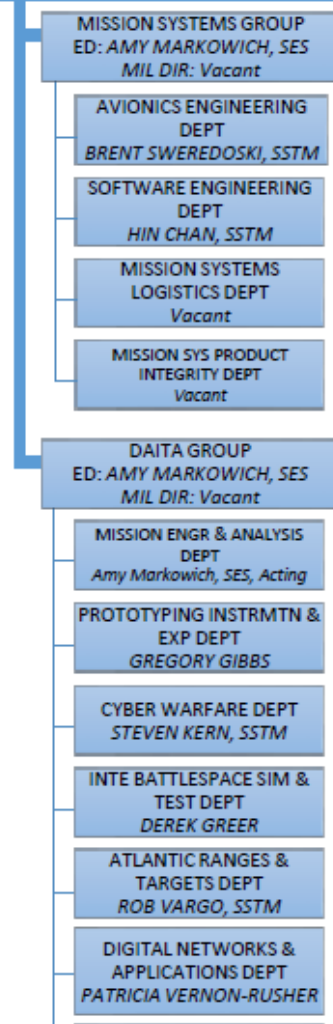
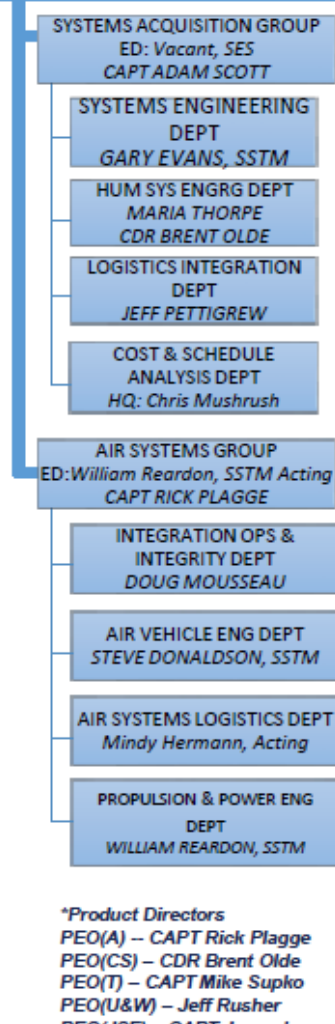
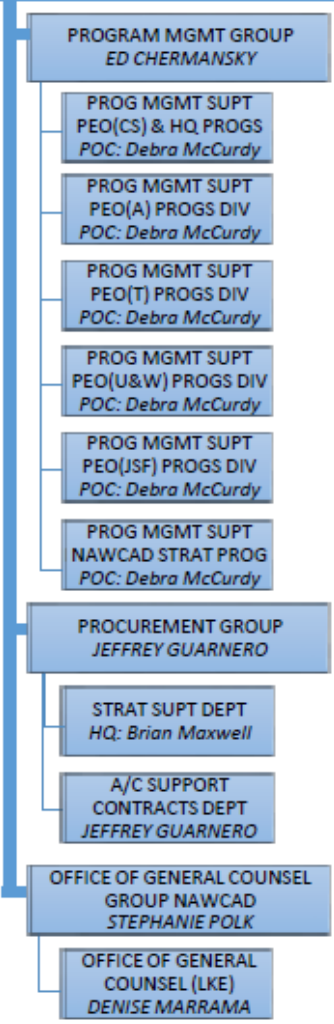
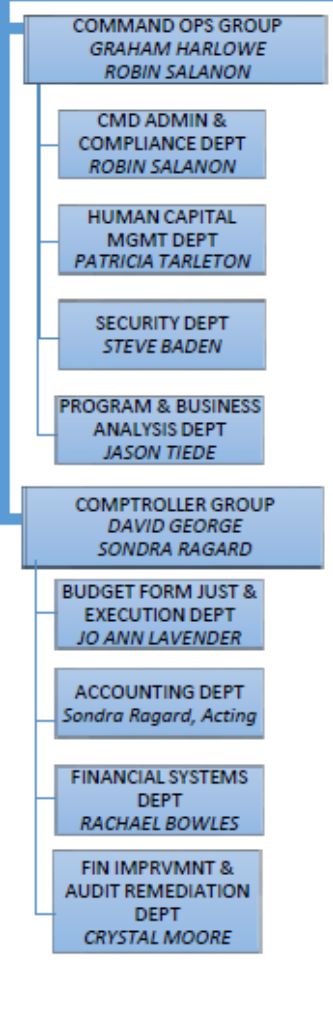
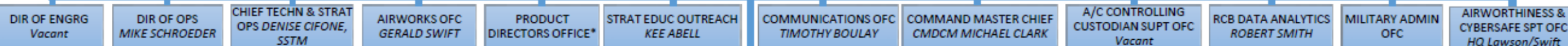




Naval Air Warfare Center Aircraft Division

RDML JOHN LEMMON, USN, COMMANDER
 LESLIE TAYLOR, SES, EXECUTIVE DIRECTOR
 CAPT CRAIG LEE, USN, VICE COMMANDER



Abbreviations
 CO - Commanding Officer
 DIR - Director
 ED - Executive Director
 LKE - Lakehurst
 SES - Senior Executive Service
 SSTM - Senior Scientific Technical Manager

OIC - Officer in Charge
 ORL - Orlando
 TD - Technical Director
 WOLF - Webster Outlying Field

As of 01 May 2020



NOTES

The following slides reflect movements of division personnel as of 15 March 2020 when the major CAO to MAO personnel transfers occurred in Navy ERP.

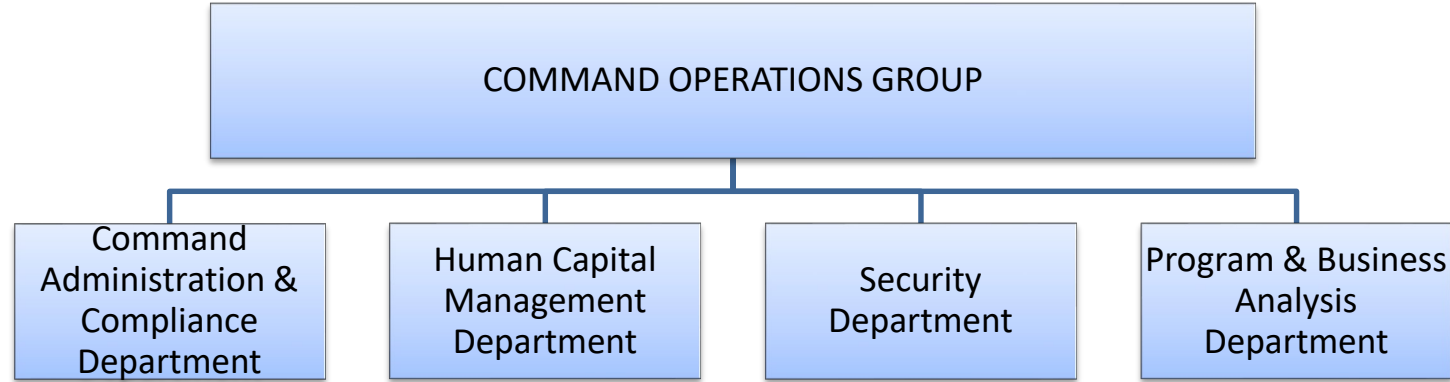
Some movements of personnel are not shown if those movements only reflected a small percentage of the personnel comprising the new MAO division.

These charts will not be updated or maintained.

Additional detail information about personnel movements and current NAWCAD OBS charts can be found at:
<https://obs.navair.navy.mil/>



NAWCAD COMMAND OPERATIONS GROUP

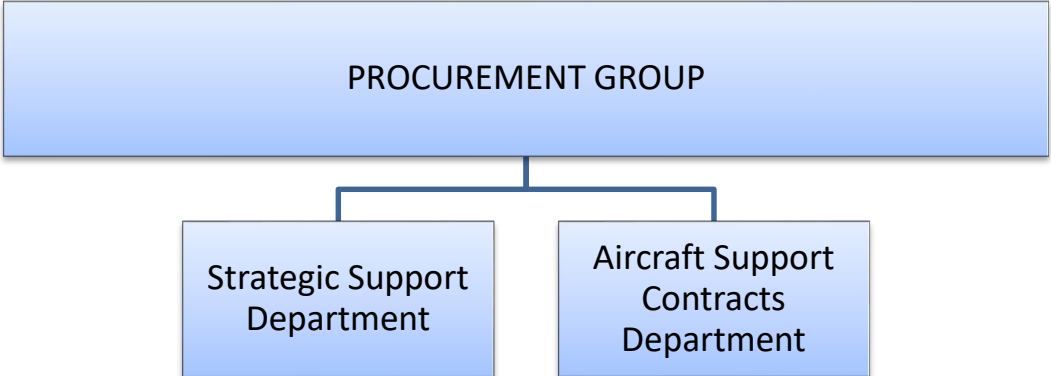


| CAO Organization | | MAO Organization | |
|------------------|------------------------------------|--|----------------|
| 7.0 | Corporate Operations & Total Force | Command (Cmd) Operations Group | A100000 |
| 7.1.1 | Strategic Operations Division | Cmd Admin & Compliance Dept | A110000 |
| 7.1.1.2 | Cmd Analyses Br | PEO(JSF) Operations Supt Div | A111000 |
| 7.1.3 | Admin Supt Div | Admin & Records Mgmt Div | A112000 |
| 7.1.4 | Cmd Process Improvements Div | Cmd Process Improvements Div | A113000 |
| 7.3 | Total Force Strategy & Mgmt Dept | Human Capital Mgmt Dept | A120000 |
| 7.3.1 | Personnel Policy & Programs Div | Personnel Policy & Programs Div | A121000 |
| 7.3.2 | Bus Intelligence & Data Analy Div | Bus Intelligence & Data Analy Div | A122000 |
| 7.3.3 | Career Development Div | Career Development Div | A123000 |
| 7.3.4 | EEO & Diversity Div | EEO & Diversity Div | A124000 |
| 7.4 | Security Dept | Security Dept | A130000 |
| 7.4.1 | Information Security Div | Information Security Div | A131000 |
| 7.4.2 | Technology Protection Division | Technology Protection Div | A132000 |

| CAO Organization | | MAO Organization | |
|------------------|-------------------------------|--------------------------------|---------|
| 7.4.4 | Operations Div | Operations Div | A133000 |
| 7.8 | Program & Business Analys Div | Programs & Business Analys Div | A140000 |
| 7.8.1 | Program Management Supt Div | Program Management Supt Div | A141000 |
| 7.8.2 | Business Ops Div | Mission Support Div | A142000 |
| 7.8.3 | Research & Engrg Div | | |
| 7.8.4 | Test & Evaluation Div | | |
| 7.8.5 | PEO(A) Div | PEO & HQ Project Support Div | A143000 |
| 7.8.6 | PEO(T) Div | | |
| 7.8.7 | PEO(UW) Div | | |
| 7.8.8 | PEO(JSF) Div | | |



NAWCAD PROCUREMENT GROUP

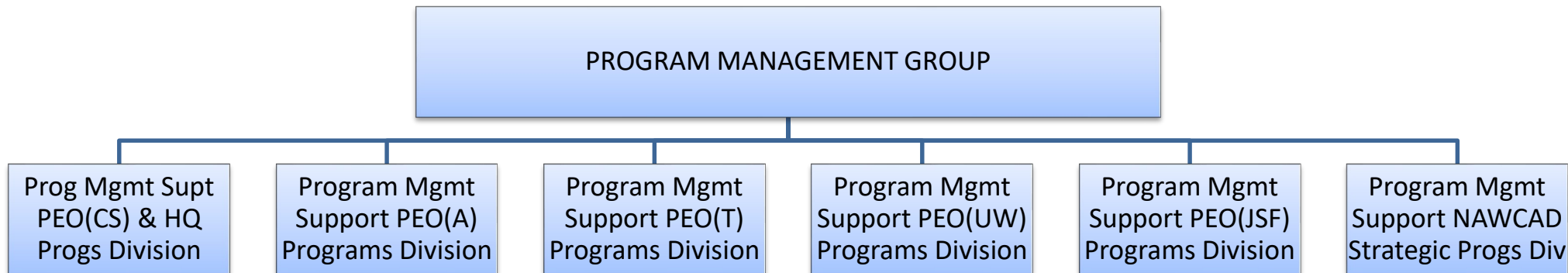


| CAO Organization | | MAO Organization | |
|------------------|--|-------------------------------|----------------|
| 2.5.1 | Aircraft Support Contracts Div | PROCUREMENT GROUP | A200000 |
| NEW | | Strategic Support Dept | A210000 |
| 4.0E | Source Selection Office | Source Selection Division | A214000 |
| NEW | | Proposal Analysis Div | A215000 |
| 2.1.3 | Contracts Trng & Strat Initiatives Div | Enterprise Procurement Div | A216000 |
| 2.5.1 | Aircraft Support Contracts Div | | |

| CAO Organization | | MAO Organization | |
|------------------|--------------------------------|--|----------------|
| 2.5.1 | Aircraft Support Contracts Div | Aircraft Support Contracts Dept | A250000 |
| 2.5.1 | Aircraft Support Contracts Div | Aircraft Support Division 1 | A251000 |
| 2.5.1 | Aircraft Support Contracts Div | Aircraft Support Division 2 | A252000 |



NAWCAD PROGRAM MANAGEMENT GROUP

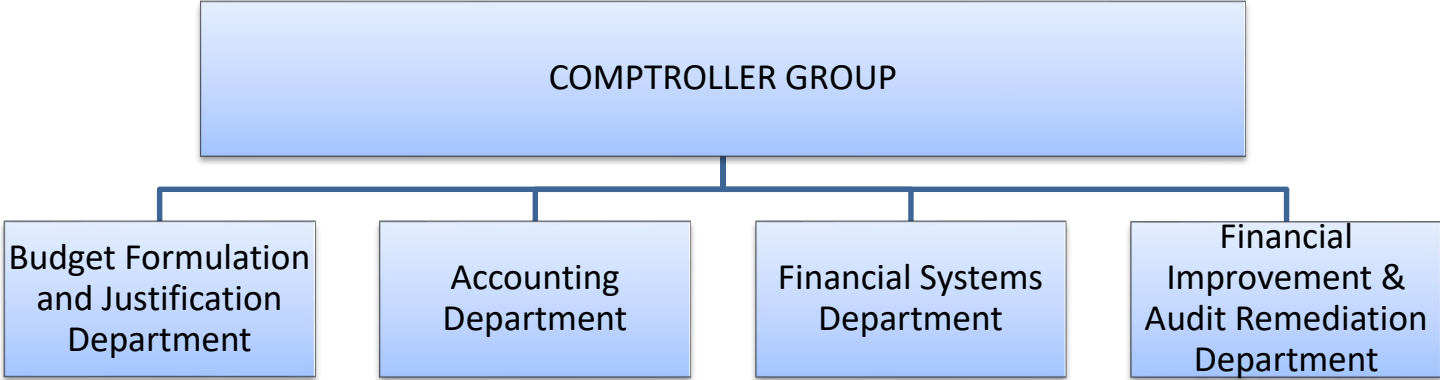


| CAO Organization | | MAO Organization | |
|------------------|---|--|----------------|
| 1.0 | Program Management Group | Program Management Group | A300000 |
| 1.3.1 | Program Management Support AIR-1.0 Programs Div | Program Management Support PEO(CS) & HQ Programs Div | A311000 |
| 1.3.2 | Program Management Support PEO(A) Programs Div | Program Management Support PEO(A) Programs Div | A312000 |
| 1.3.3 | Program Management Support <u>PEO(T) Programs Div</u> | Program Management Support PEO(T) Programs Div | A313000 |
| 1.2 | Aviation/Ship Integration Dept | | |
| 1.3.4 | Program Management Support <u>PEO(UW) Programs Div</u> | Program Management Support PEO(UW) Programs Div | A314000 |
| 1.2 | Aviation/Ship Integration Dept | | |
| 1.3.5 | Program Management Support <u>PEO(JSF) Programs Div</u> | Program Management Support PEO(JSF) Programs Div | A315000 |
| 1.2 | Aviation/Ship Integration Dept | | |

| CAO Organization | | MAO Organization | |
|------------------|---|--|---------|
| 1.3.1 | Program Management Support <u>AIR-1.0 Programs Div</u> | Program Management Support NAWCAD Strategic Programs Div | A316000 |
| 1.3.2 | Program Management Support <u>PEO(A) Programs Div</u> | | |
| 1.3.3 | Program Management Support <u>PEO(T) Programs Div</u> | | |
| 1.3.4 | Program Management Support <u>PEO(UW) Programs Div</u> | | |
| 1.3.7 | Program Management Support <u>AIRWORKS Programs Div</u> | | |
| 1.2 | <u>Aviation/Ship Integration Dept</u> | | |
| 1.7 | Acquisition Tools Dept | | |



NAWCAD COMPTROLLER GROUP

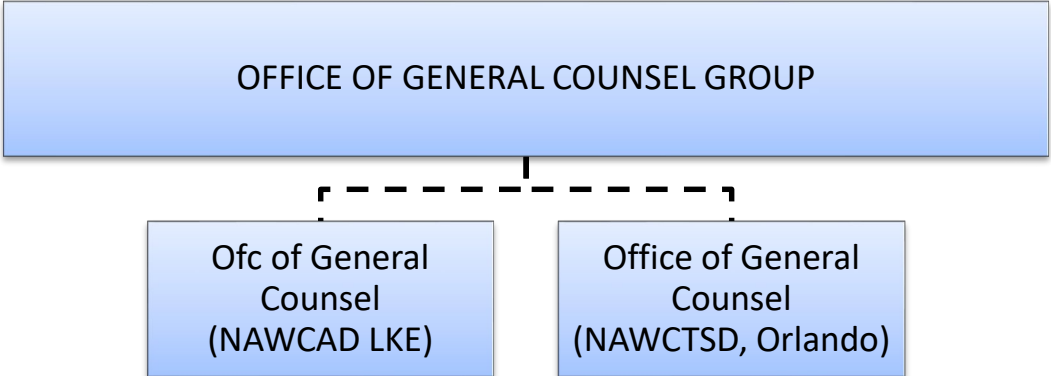


| CAO Organization | | MAO Organization | |
|------------------|------------------------------------|--|----------------|
| 10.0 | Comptroller Group | Comptroller Group | A800000 |
| | | Deputy Comptroller | A8A0000 |
| | | Asst Deputy Comptroller (LKE) | B8A0000 (LKE) |
| | | Asst Deputy Comptroller (ORL) | G8A0000 (ORL) |
| 10.1 | Budget Form, Just & Execution Dept | Budget Form & Justificiation Dept | A810000 |
| | | | B810000 (LKE) |
| | | | G810000 (ORL) |
| 10.1.5 | Budget Formulation Div | Command Support Div | A815000 |
| 10.1.7 | Funds Management Div | Funds Management Div | A817000 |
| 10.1.9 | Budget Customer Div (Pax, LKE) | Mission Area Support Div | A819000 |
| 7.8.2 | Business Ops Div (LKE) | | B819000 (LKE) |
| 10.1.5 | Budget Formulation Div (ORL) | | G819000 (ORL) |
| 10.1.6 | Budget Execution Div (ORL) | | |
| 10.2 | Accounting Dept | Accounting Dept | A820000 |
| | | | B820000 (LKE) |
| | | | G820000 (ORL) |

| CAO Organization | | MAO Organization | |
|------------------|--|--|---------------|
| 10.2.4 | Cost Accounting Div (Pax) | Accounting Operations Div | A821000 |
| 10.2.3 | General Ledger Div (Pax) | | B821000 (LKE) |
| 10.2.5 | Customer Service Div (ORL, LKE) | | G821000 (ORL) |
| 10.2.3 | General Ledger Div | Financial Accounting Div | A823000 |
| 10.2.4 | Cost Accounting Div | | |
| 10.2.3 | General Ledger Div (Pax) | Customer Service Div | A825000 |
| 10.2.4 | Cost Accounting Div (Pax) | | B825000 (LKE) |
| 10.2.5 | Customer Service Div (LKE, ORL) | | G825000 (ORL) |
| 10.2.8 | Managerial Accounting Div (ORL) | | |
| 10.5 | Financial Systems Dept | Financial Systems Dept | A850000 |
| 7.2.2.2 | IT/CS Appl Design Integr & Ops Supt Br | | |
| 10.6 | Financial Improvement & Audit Remediation Dept | Financial Improvement & Audit Remediation Dept | A860000 |



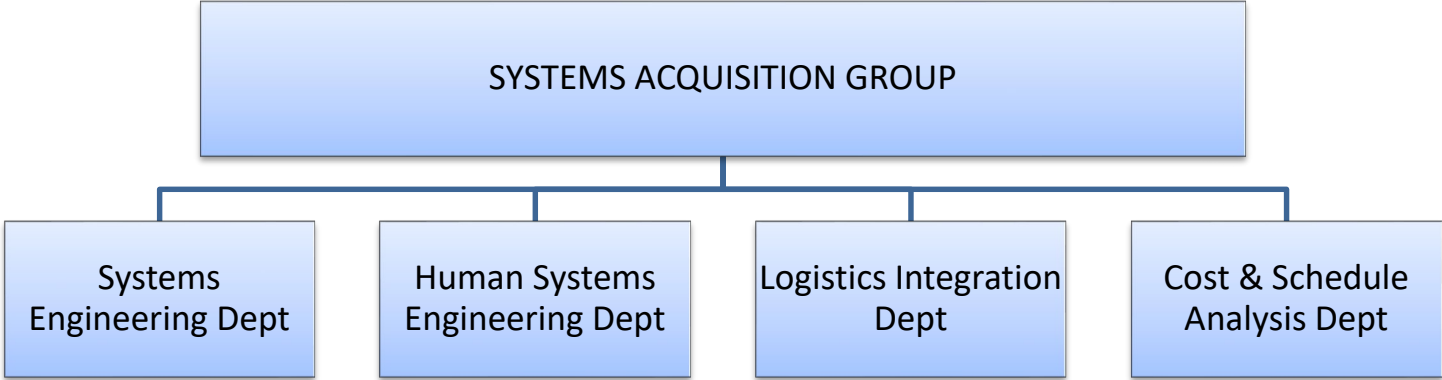
NAWCAD OFFICE OF GENERAL COUNSEL GROUP



| CAO Organization | | MAO Organization | |
|------------------|-----------------|---------------------------------|---|
| 11.7 | NAWC Legal Dept | Office of General Counsel Group | A900000 BL90000 (LKE) GT90000 (ORL) |



NAWCAD SYSTEMS ACQUISITION GROUP



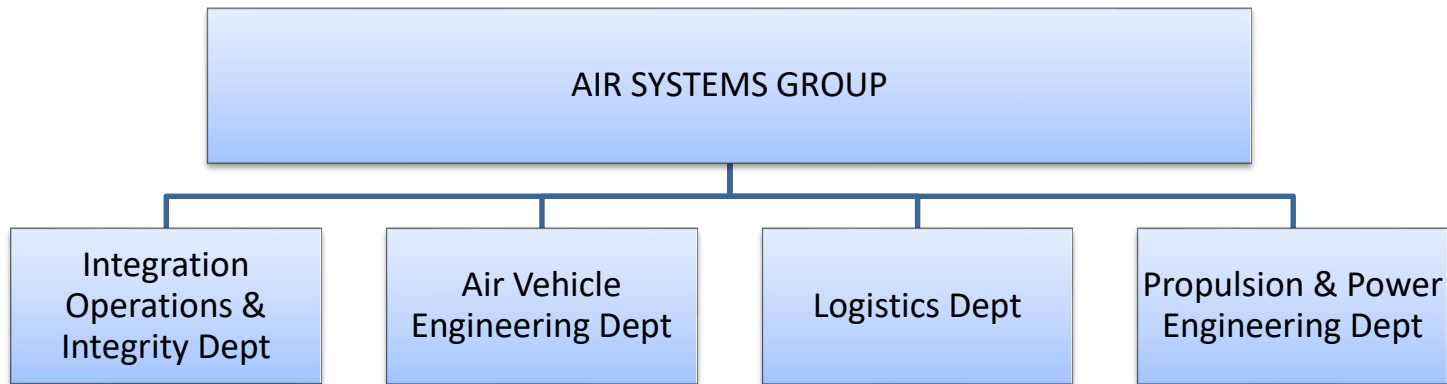
| CAO Organization | | MAO Organization | |
|------------------|---|--|----------------|
| New | | SYSTEMS ACQUISITION GROUP | AA00000 |
| 4.1 | Systems Engineering Dept | Systems Engineering Dept | AA10000 |
| 4.1.1 | Air Platform Systems Engrg Div | Air Platform Systems Engrg Div | AA11000 |
| 4.1.8 | Combat Survivability Div | Combat Survivability Div | AA13000 |
| 4.1.12 | Metrology Div | Metrology Div | AA14000 |
| 4.1.13 | E3 Engineering Div | E3 Engineering Div | AA15000 |
| 4.1.6 | Systems Safety Engineering Div | Systems Product Integrity Div | AA17000 |
| 4.1.9 | Manufacturing & Quality Div | | |
| 4.1.10 | Reliability & Maintainability Engrg Div | | |
| 4.6 | Human Systems Dept | Human Systems Engineering Dept | AA20000 |
| 4.6.1 | Systems Engrg & Integration Div | Systems Engrg & Integration Div | AA21000 |
| 4.6.5 | Human Integr & Performance Div | Human Performance Div | AA22000 |
| 4.6.6 | Escape, Parachute & Crashworthy Div | Aircrew Protection & Survivability Div | AA23000 |
| 4.6.7 | Protection & Sustainment Div | Aeromedical & Life Support Div | AA24000 |
| 4.6.9 | Aeromedical Div | | |

| CAO Organization | | MAO Organization | |
|------------------|--------------------------------------|--|----------------|
| 6.6 | Logistics Management Integr Dept | Logistics Integration Dept | AA30000 |
| 6.6.1 | APEO(A)-L ASW/ASLT/SPEC MSN Prog Div | Program Logistics Integration Div | AA31000 |
| 6.6.2 | APEO(T)-L Tactical A/C Prog Div | | |
| 6.6.3 | APEO(UW)-L UAS & STRK WPNS Prog Div | | |
| 6.6.4 | APEO(1.0)-L Program Mgmt Div | | |
| 6.6.1 | APEO(A)-L ASW/ASLT/SPEC MSN Prog Div | Program Logistics Integration Div | AA31000 |
| 6.6.2 | APEO(T)-L Tactical A/C Prog Div | | |
| 6.6.3 | APEO(UW)-L UAS & STRK WPNS Prog Div | | |
| 6.6.5 | Joint Strike Fighter Log Div | | |
| 4.2 | Cost Dept | Cost & Schedule Analysis Dept | AA40000 |
| 4.2.1 | Acquisition Cost Estimating Div | Acquisition Cost Estimating & Analys Div | AA41000 |
| 4.2.3 | Integrated Project Mgmt Div | Execution Analysis & Support Div | AA42000 |
| 4.2.2 | IPS/O&S Cost Estimating Div | Sustainment Cost Est & Analysis Div | AA43000 |

NAVAIR Public Release 2020-501. Distribution Statement A – Approved for public release; distribution is unlimited.



NAWCAD AIR SYSTEMS GROUP



| CAO Organization | | MAO Organization | |
|------------------|----------------------------------|--|----------------|
| New | | AIR SYSTEMS GROUP | AB00000 |
| New | | Integr, Operations & Integrity Dept | AB10000 |
| 4.3 | Air Vehicle Engineering Dept | Resources & Operations Div | AB11000 |
| 4.4 | Propulsion & Power Dept | | |
| 6.0 | Logistics & Industrial Ops Group | | |
| 4.3.1 | Systems Engrg Div | Systems Engineering & Integr Div | AB12000 |
| 4.4.1 | Systems Engrg & Integ Div | | |
| 6.8.1 | Aviation Resources Div | | |
| 4.3 | Air Vehicle Engineering Dept | Air Vehicle Engineering Dept | AB20000 |
| 4.3.2 | Aeromechanics Div | Aeromechanics Div | AB21000 |
| 4.3.3 | Structures Div | Structures Div | AB22000 |
| 4.3.4 | Materials Engineering Div | Materials Engineering Div | AB23000 |
| 4.3.5 | Subsystems Div | Subsystems Div | AB24000 |

| CAO Organization | | MAO Organization | |
|------------------|--|---------------------------------|----------------|
| 6.0 | Logistics & Industrial Ops Group | Logistics Dept | AB30000 |
| 6.6.1 | APEO(A)-L ASW/ASLT/SPEC MSN Prog Div | Maintenance Div | AB31000 |
| 6.6.2 | APEO(T)-L Tactical A/C Prog Div | | |
| 6.6.3 | APEO(UW)-L UAS & STRK WPNS Prog Div | | |
| 6.6.4 | APEO(1.0)-L Program Mgmt Div | | |
| 6.6.5 | Joint Strike Fighter Log Div | | |
| 6.7.1 | Maintenance Planning Div | | |
| 6.8.5 | Logistics Product Data Div | Technical Data Div | AB32000 |
| 6.7.9 | Supply Support Div | Supply Div | AB33000 |
| 6.7.2 | Maintenance Integration Div | | |
| 6.8.3 | Total Asset Visibility Div | | |
| 6.6.1 | APEO(A)-L ASW/ASLT/SPEC MSN Prog Div | | |
| NEW | | Digital/Information Systems Div | AB34000 |
| 6.7.5 | Fleet Maint & Trng Sys Supt Div | Training Div | AB35000 |
| 6.8.2 | Avtn Log & Maint Readiness Analy Div | Flight Line Reliability Div | AB36000 |
| 6.7.8 | Avtn Ship/Shore Facilities Support Integration Div | Infrastructure Div | AB37000 |

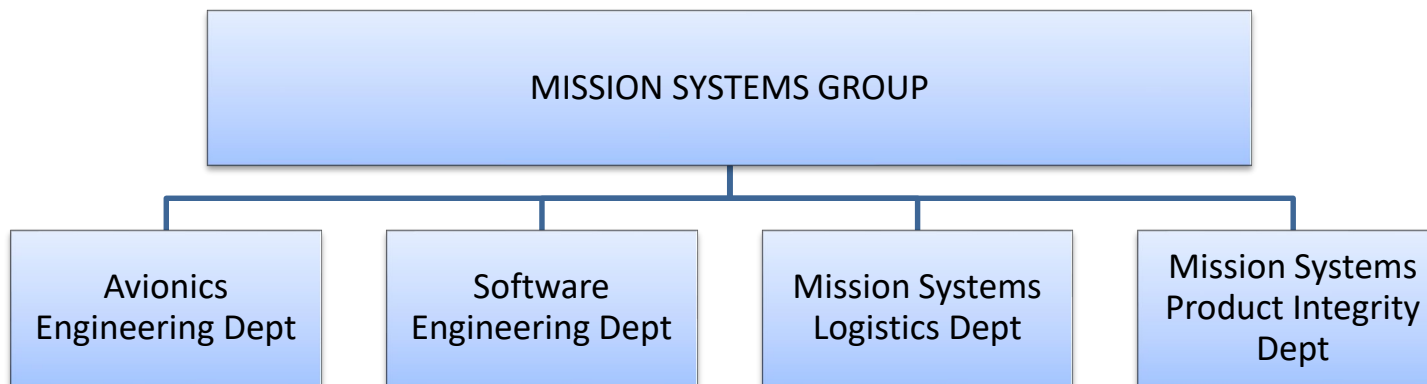


NAWCAD AIR SYSTEMS GROUP

| CAO Organization | | MAO Organization | |
|------------------|---|--|----------------|
| 4.4 | Propulsion & Power Engineering Dept | Propulsion & Power Engineering Dept | AB40000 |
| 4.4.2 | Mechanical Systems Controls & Diagnostics Div | Mechanical Systems Controls & Diagnostics Div | AB41000 |
| 4.4.3 | Turbofan / Turbojet Engines Div | Engines & Auxiliary Power Unit Div | AB42000 |
| 4.4.4 | Turboprop / Shaft Engines & APU Div | | |
| 4.4.5 | Power & Energy Div | Power & Energy Div | AB43000 |
| 4.4.6 | Test Methods & Facilities Div | Test Methods & Facilities Div | AB44000 |
| 4.4.7 | Performance & Structures Div | Performance & Structures Div | AB45000 |



NAWCAD MISSION SYSTEMS GROUP

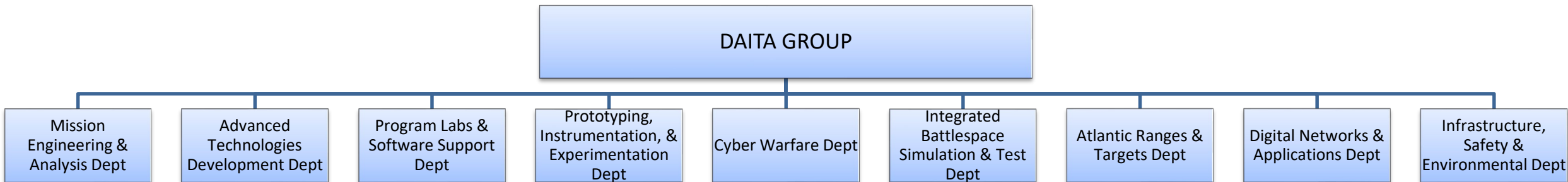


| CAO Organization | | MAO Organization | |
|------------------|--|--|----------------|
| New | | MISSION SYSTEMS GROUP | AC00000 |
| 4.5 | Avionics, Sensors & E*Warfare Dept | Avionics Engineering Dept | AC10000 |
| 4.9 | Software & Mission Systems Dept | | |
| 6.0 | Logistics & Industrial Ops Group | | |
| 4.5.1 | Avionics Systems Engineering Div | Avionics Systems Engineering Div | AC11000 |
| 4.5.3 | Core Avionics Engineering Div | Radar & Antenna Systems Engrg Div | AC13000 |
| 4.5.4 | EO & Special Mission Sensors Engrg Div | EO & Special Mission Sensors Engineering Div | AC14000 |
| 4.5.14 | Airborne ASW Engineering Div | Airborne ASW Warfare Engrg Div | AC15000 |
| 4.5.18 | Electronics Warfare Systems Engrg Div | Electronics Warfare Systems Engrg Div | AC16000 |
| 4.9 | Software & Mission Systems Dept | Software Engineering Dept | AC20000 |
| 4.9.4 | Software Engineering & Acq Mgmt Div | Software Acquisition Div | AC21000 |
| 4.9.4 | Software Engineering & Acq Mgmt Div | Software Productionalization Div | AC22000 |
| 4.9.3 | Warfare Sys Integr Lab Engrg Div | Software Development Environ Div | AC23000 |
| 4.9.4 | Software Engineering & Acq Mgmt Div | Software Sustainment Div | AC24000 |

| CAO Organization | | MAO Organization | |
|------------------|--------------------------------------|---|----------------|
| 6.0 | Logistics & Industrial Ops Group | Mission Systems Logistics Dept | AC30000 |
| 6.6.1 | APEO(A)-L ASW/ASLT/SPEC MSN Prog Div | Mission Systems Maintenance Div | AC31000 |
| 6.6.2 | APEO(T)-L Tactical A/C Prog Div | | |
| 6.6.3 | APEO(UW)-L UAS & STRK WPNS Prog Div | | |
| 6.6.4 | APEO(1.0)-L Program Mgmt Div | | |
| 6.6.5 | Joint Strike Fighter Log Div | | |
| 6.7.6.3 | Metrology/Calibration Br | | |
| 6.6.2 | APEO(T)-L Tactical A/C Prog Div | Mission Systems Technical Data Div | AC32000 |
| 6.6.4 | APEO(1.0)-L Program Mgmt Div | | |
| 6.7.2 | Maintenance Integration Div | Mission Systems Supply Div | AC33000 |
| 6.6.2 | APEO(T)-L Tactical A/C Prog Div | | |
| 6.7.9 | Supply Support Div | | |
| NEW | | Mission Sys Digital/Information Sys Div | AC34000 |
| NEW | | Mission Sys Training Div | AC35000 |
| 6.6.2 | APEO(T)-L Tactical A/C Prog Div | Mission Sys Flight Line Reliability Div | AC36000 |
| 6.6.4 | APEO(1.0)-L Program Mgmt Div | | |
| 6.7.6 | Support Equipment Div | Mission Systems Infrastructure Div | AC37000 |
| 6.6.2 | APEO(T)-L Tactical A/C Prog Div | | |
| 6.6.3 | APEO(UW)-L UAS & STRK WPNS Prog Div | | |
| NEW | | Mission Systems Product Integrity Dept | AC40000 |



NAWCAD DIGITAL ANALYTICS, INFRASTRUCTURE & TECHNOLOGY ADVANCEMENT GROUP



| CAO Organization | | MAO Organization | |
|------------------|-------------------------------------|--|-----------------|
| New | | DAITA GROUP | AD00000* |
| 4.13 | Mission Engineering & Analysis Dept | Mission Engineering & Analysis Dept | AD10000 |
| 4.13.1 | Warfare Analysis Div | Warfare Analysis Div | AD11000 |
| 4.13.2 | Mission Engineering Div | Mission Engineering & System of Systems Integration Div | AD12000 |
| 4.13.1 | Warfare Analysis Div | | |
| 4.13.3 | Mission Network Engineering Div | | |
| 4.13.5 | Intelligence Div | Intelligence Div | AD13000 |
| 4.13.6 | Special Security Div | Special Security Div | AD14000 |
| 4.13.7 | Program Security Div | Special Access Security Div | AD15000 |
| NEW | | Advanced Technologies Dev Dept | AD20000 |
| NEW | | Program Labs & Software Supt Dept | AD30000 |
| 5.2 | Range Dept | Prototyping, Instrumentation & Experimentation Dept | AD40000* |
| 5.4 | Integ Battlespace Sim & Test Dept | | |
| 5.2.9 | Aircraft Instrumentation Div | Aircraft Instrumentation Div | AD41000* |
| 5.2.9 | Aircraft Instrumentation Div | Instrumentation Engineering Div | AD42000* |
| 5.4.6 | Aircraft Prototyping Div | Aircraft Prototyping Systems Div | AD43000* |

| CAO Organization | | MAO Organization | |
|------------------|--|---|-----------------|
| NEW | | Cyber Warfare Dept | AD50000 |
| 5.4.3 | Simulation Div | Cyber Assessments Solutions & Ops Div | AD51000 |
| 4.1.14 | Systems Security Engrg Div | | |
| 6.8.4 | Log & Maint Info Sys & Technology Div | | |
| 4.1.14 | Systems Security Engrg Div | Systems Security Engineering Div | AD52000 |
| 5.4 | Int Battlespace Simulation & Test Dept | Int Battlespace Simulation & Test Dept | AD60000* |
| 5.4.3 | Simulation Div | Simulation Div | AD61000* |
| 5.4.4 | Integrated Combat Environments Div | Integrated Combat Environments Div | AD62000* |
| 5.4.3 | Simulation Div | Battlespace Div | AD63000* |
| 5.4.3 | Simulation Div | System Integration & Test Lab Div | AD64000* |
| 5.2 | Range Dept | Atlantic Ranges & Targets Dept | AD70000* |
| 5.3 | Targets Dept | | |
| NEW | | Open Air Facilities Div | AD71000* |
| 5.2.2 | Atlantic Range Operations Div | Atlantic Test Range Ops Div | AD72000* |
| 5.3.3 | Atlantic Targets & Marine Ops Div | Atlantic Targets and Marine Ops Div | AD73000* |
| 5.2.4 | Atlantic Range Instrumentation Div | Atlantic Range Instrumentation Div | AD74000* |



NAWCAD DIGITAL ANALYTICS, INFRASTRUCTURE & TECHNOLOGY ADVANCEMENT GROUP

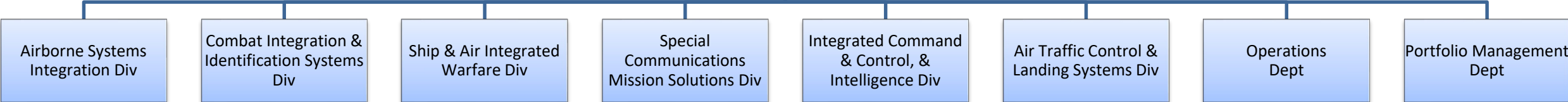
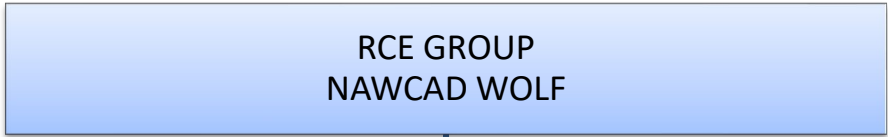
| CAO Organization | | MAO Organization | |
|------------------|--|--|-----------------|
| 7.2 | IT/CS Dept | Digital Networks & Applications Dept | AD80000* |
| 5.4 | Int Battlespace Simulation & Test Dept | | |
| 6.8 | Av Readiness & Resource Analy Dept | | |
| 5.4.1 | RDT&E Infrastructure Div | RDT&E Engrg & Infrastructure Div | AD81000* |
| 7.2.1 | IT/CS Cust Rel Mgmt/Horiz Integr Div | Cust Rel Mgmt/Horiz Integr Div | AD82000 |
| 7.2.2 | IT/CS Appl Integr & Bus Intel Div | Appl Integr & Bus Intel Div | AD83000 |
| 7.2.4 | IT/CS Infrastructure & Operations Div | Infrastructure & Operations Div | AD84000 |
| 7.2.6 | Cyber Security Div | Cybersecurity Div | AD86000 |
| 6.8.4 | Logistics & Maintenance Information Systems & Technology Div | Logistics & Maintenance Information Systems & Technology Div | AD87000 |

| CAO Organization | | MAO Organization | |
|------------------|--|--|---------|
| 7.10 | Infrastructure Safety & Business Ops Dept | Infrastructure, Safety & Environmental Dept | AD90000 |
| 7.10.1 | Mission & Workforce Safety Div | Safety & Environmental Div | AD91000 |
| 7.10.2 | Infrastructure Resources & Planning Management Div | Infrastructure Engineering & Planning Management Div | AD92000 |
| 7.10.3 | Facilities Mgmt & Coordination Div | Facilities Mgmt & Coordination Div | AD93000 |
| 7.10 | Infrastructure Safety & Business Ops Dept | Space Management & Data Analytics Div | AD94000 |



NAWCAD RAPID CAPABILITY ENGINEERING GROUP

Webster Outlying Field, St Inigoes, MD



| CAO Organization | | MAO Organization | |
|------------------|--------------------------------------|---|----------------|
| 4.11 | Rapid Capability Engrg & Integr Dept | Rapid Capability Engineering Group | TW00000 |
| 4.11 | Rapid Capability Engrg & Integ Dept | Rapid Capability Solutions Dept | TW10000 |
| 4.11.6 | Adv Concepts & Rapid Transition Div | Airborne Systems Integration Div | TW11000 |
| 4.11.2 | Combat Integration & ID Sys Div | | |
| 4.11.3 | Ship & Air Integrated Warfare Div | | |
| 4.11.2 | Combat Integration & ID Sys Div | Combat Integration & ID Sys Div | TW12000 |
| 4.11.3 | Ship & Air Integrated Warfare Div | Ship & Air Integrated Warfare Div | TW13000 |
| 4.11.4 | Special Comm Mission Solutions Div | Special Comm Mission Solutions Div | TW14000 |
| 6.6 | Logistics Management Integr Dept | | |
| 4.11.4 | Special Comm Mission Solutions Div | Integrated C2 & Intelligence Div | TW15000 |
| 4.11.3 | Ship & Air Integrated Warfare Div | | |
| 4.11.7 | Air Traffic Control Div | Air Traffic Control & Landing Sys Div | TW16000 |

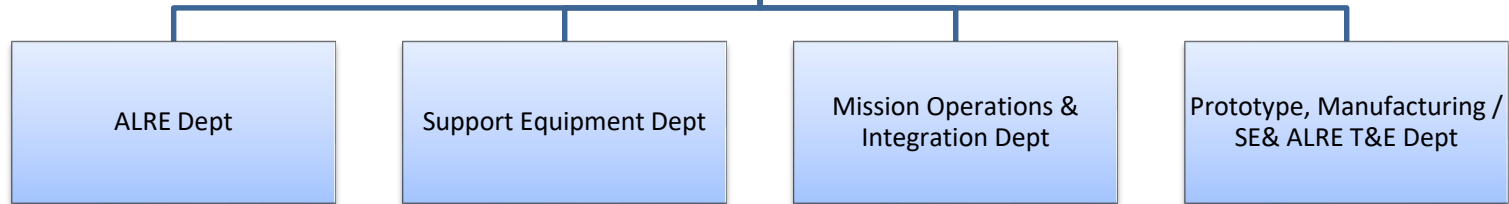
| CAO Organization | | MAO Organization | |
|------------------|---------------------------------|---------------------------|----------------|
| NEW | | Operations Dept | TW20000 |
| 4.11D | Plans & Operations Ofc | Support Operations Div | TW21000 |
| 4.11D | Plans & Operations Ofc | Business Operations Div | TW22000 |
| 4.11.5 | Engrg Prototyping & Bus Ops Div | | |
| NEW | | Portfolio Management Dept | TW30000 |



NAWCAD SUPPORT EQUIPMENT and AIRCRAFT LAUNCH & RECOVERY EQUIPMENT GROUP

Lakehurst, NJ

SUPPORT EQUIPMENT (SE) and AIRCRAFT LAUNCH & RECOVERY EQUIPMENT (ALRE)
GROUP
NAWCAD LKE



| CAO Organization | | MAO Organization | |
|----------------------------------|--|----------------------------------|----------------|
| 4.8 7.0 11.7 | SE & ALRE Dept Corporate Ops & Total Force Group NAWC Legal | SE & ALRE GROUP | BL00000 |
| NEW | | ALRE Dept | BL10000 |
| 4.8.2 4.8.3 6.6.2 1.3.3 | ALRE Engineering Div ALRE SW Engrg & SE/ALRE Cyber Div APEO(T)-L Tactical A/C Prog Div Program Mgmt Supt PEO(T) Progs Div | Ford-Class Launch & Recovery Div | BL11000 |
| 4.8.2 6.6.2 4.8.1 1.3.3 | ALRE Engineering Div APEO(T)-L Tactical A/C Prog Div SE & ALRE Systems Engineering Div Program Mgmt Supt PEO(T) Progs Div | Visual Landing Aids Div | BL12000 |
| 4.8.3 4.8.2 6.6.2 1.3.3 | ALRE SW Engrg & SE/ALRE Cyber Div ALRE Engineering Div APEO(T)-L Tactical A/C Prog Div Program Mgmt Supt PEO(T) Progs Div | Information Systems Div | BL13000 |

| CAO Organization | | MAO Organization | |
|----------------------------------|--|---|----------------|
| 4.8.2 6.6.2 4.8.1 1.3.3 | ALRE Engineering Div APEO(T)-L Tactical A/C Prog Div SE & ALRE Systems Engineering Div Program Mgmt Supt PEO(T) Progs Div | Launch, Recovery & Expeditionary Airfields Div | BL14000 |
| 4.8.7 | ALRE Fleet Tech Services Div | Fleet Technical Services Div | BL15000 |
| NEW | | Support Equipment Dept | BL20000 |
| 4.8.6 6.6.4 1.3.1 | SE Engineering Div APEO(1.0)-L Program Mgmt Div Prog Mgmt Support AIR-1.0 Div | Common & Commercial Systems Div | BL21000 |
| 4.8.6 6.7.6 4.8.3 1.3.2 | SE Engineering Div Support Equipment Div ALRE SW Engrg & SE/ALRE Cyber Div Prog Mgmt Support PEO(A) Div | PEO(A) Peculiar SE Div | BL22000 |



NAWCAD SUPPORT EQUIPMENT and AIRCRAFT LAUNCH & RECOVERY EQUIPMENT GROUP

Lakehurst, NJ

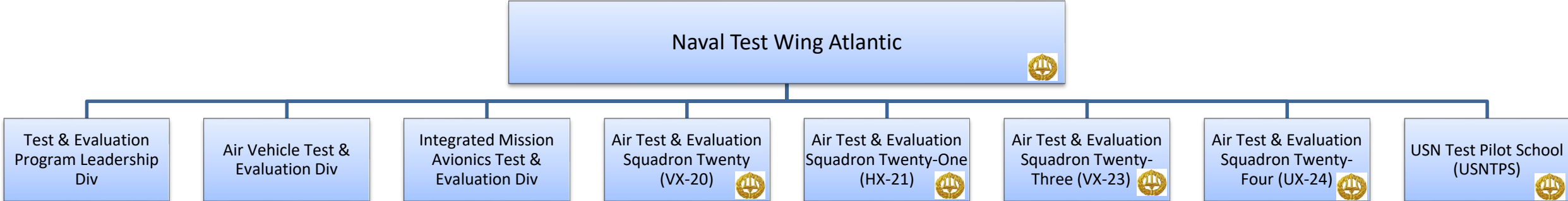
| CAO Organization | | MAO Organization | |
|----------------------------------|---|---|----------------|
| 4.8.6 4.8.1 6.7.6 1.3.3 | SE Engineering Div SE & ALRE Systems Engineering Div Support Equipment Div Program Mgmt Supt PEO(T) Progs Div | PEO(T) Peculiar Support Equipment Div | BL23000 |
| 4.8.6 6.7.6 1.3.4 | SE Engineering Div Support Equipment Div Program Mgmt Supt PEO(UW) Progs Div | PEO(UW) and Joint Strike Fighter Peculiar Support Equipment Div | BL24000 |
| NEW | | Mission Operations & Integration Dept | BL30000 |
| 6.8.5 6.7.2 4.1.12 | Logistics Product Data Div Maintenance Integration Div Metrology Div | Logistics & Maintenance Integration Div | BL31000 |
| 4.2.1 4.8.1 4.1.6 4.3.4 | Acquisition Cost Estimating Div SE & ALRE Systems Engineering Div Systems Safety Engineering Div Materials Engineering Div | Engineering Integration Div | BL32000 |
| 4.8.1 6.8.4 5.4.1 7.2 | SE & ALRE Systems Engineering Div Log & Maint Info Sys & Tech Div RDT&E Infrastructure Div IT/CS Dept | Digital Engineering Div | BL33000 |
| 2.5.2 2.5.1 | Aircraft Platform Interface Contracts Div Aircraft Support Contracts Div | Procurement Div | BL34000 |

| CAO Organization | | MAO Organization | |
|-------------------------|---|--|----------------|
| NEW | | Prototype, Manufacturing / SE & ALRE T&E Dept | BL40000 |
| 4.8.8 | Prototype & Manufacturing Div | Prototype & Manufacturing Div | BL41000 |
| 4.8.6 4.8.9 4.8.3 | SE Engineering Div ALRE SW Engrg & SE/ALRE Cyber Div | SE & ALRE Test Div | BL42000 |



NAVAL TEST WING ATLANTIC

Patuxent River, MD



| CAO Organization | | MAO Organization | |
|------------------|--|--|----------------|
| 5.1 | Integrated Systems Evaluation, Experimentation and Test Dept | Naval Test Wing Atlantic | AN00000 |
| 5.1.1 | Systems Test & Experimentation Management Div | Test & Evaluation Program Leadership Div | AN01000 |
| 6.7.8.3 | Supportability Test & Evaluation Br | | |
| 5.1.6 | Air Vehicle Test & Evaluation Div | Air Vehicle Test & Evaluation Div | AN02000 |
| 5.1.2 | Mission Systems Test & Evaluation Div | Integrated Mission & Avionics T&E Div | AN08000 |
| 5.1.12 | Integrated Warfare T&E Div | | |

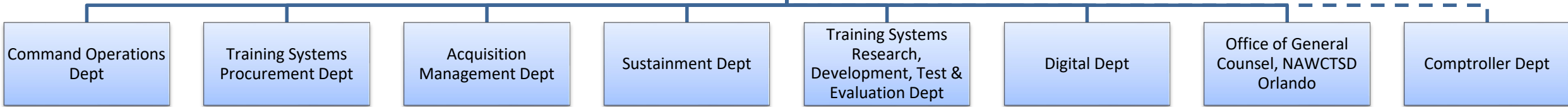
| CAO Organization | | MAO Organization | |
|------------------|--------------------------------|--------------------------------|---------|
| 5.1.3 | Force Aircraft Test Div | AIRTEVRON TWENTY (VX-20) | AN03000 |
| 5.1.4 | Rotary Wing Aircraft Test Div | AIRTEVRON TWENTY-ONE (HX-21) | AN04000 |
| 5.1.5 | USN Test Pilot School (USNTPS) | USN Test Pilot School (USNTPS) | AN05000 |
| 5.1.7 | Strike Aircraft Test Div | AIRTEVRON TWENTY-THREE (VX-23) | AN06000 |
| 5.1.11 | Unmanned Aircraft Test Div | AIRTEVRON TWENTY-FOUR (UX-24) | TN07000 |



NAVAL AIR WARFARE CENTER TRAINING SYSTEMS DIV

Orlando, FL

Naval Air Warfare Center Training Systems Division



| CAO Organization | | MAO Organization | |
|-----------------------|---|--|----------------|
| 4.0 4.6 | Research and Engineering Group Human Systems Dept | Naval Air Warfare Center Training Systems Div | GT00000 |
| 7.0 | Corporate Ops & Total Force Group | Command Operations Dept | GT10000 |
| 7.1.3 | Administrative Support Div | Administrative Support Div | GT11000 |
| 7.3 7.3.1 7.3.3 | Total Force Strategy & Mgmt Dept Personnel Policy & Programs Div Career Development Div | Human Capital Management Div | GT12000 |
| 7.4 4.M.6 | Security Dept Special Security Div | Security Div | GT13000 |
| 7.8 | Program & Business Analysis Dept | Program & Business Analysis Div | GT14000 |
| 7.10 | Infrastructure & Safety Business Operations Div | Infrastructure & Safety Business Operations Div | GT15000 |
| 2.5.3 | Training Systems Contracts Div | Training Systems Procurement Dept | GT20000 |
| 2.5.3.1 | Cross-Warfare, R&D and Cmd Supt Div | Trng Sys Proc Cross-Warfare Div | GT21000 |
| 2.5.3.2 | Aviation Fleet Support Br | Trng Sys Proc Fleet Technical Svcs Div | GT22000 |
| 2.5.3.3 | PMA205 Maritime & Logistics Br | Trng Sys Proc Maritime Div | GT23000 |
| 2.5.3.4 | PMA205 MC/Integ & Gen Trng Sltns Br | Trng Sys Proc USMC Div | GT24000 |

| CAO Organization | | MAO Organization | |
|------------------|--|---------------------------------------|----------------|
| 2.5.3.5 | PMA205 Strike/Ground Based Trng Sys Br | Trng Sys Proc Strike & TSD Div | GT25000 |
| 2.5.3.6 | Sea Systems Br | Trng Sys Proc Surface & Undersea Div | GT26000 |
| 2.5.3.7 | Aircraft Support Br | Trng Sys Proc PMA273 Div | GT27000 |
| 2.5.3.4 | PMA205 MC/Integ & Gen Trng Sltns Br | Trng Sys Proc FRC Div | GT28000 |
| 1.0 | Program Management Group | Acquisition Management Dept | GT30000 |
| 1.3.1 | Program Mgmt Supt AIR-1.0 Div | Trng Sys Proc FRC Div | GT31000 |
| 1.3.6 | Program Mgmt Supt Non-Aviation Div | Surface & Undersea War Trng Prd Div | GT32000 |
| 1.3.6 | Program Mgmt Supt Non-Aviation Div | Cross-Warfare Trng Products Div | GT33000 |
| 1.4.1 | International Program Management Div | International Training Products Div | GT34000 |
| 1.0 | Program Management Group | Ready Relevant Learning Trng Prod Div | GT35000 |
| 6.0 | Logistics & Industrial Operations Group | Sustainment Dept | GT40000 |
| 6.6.4 | APEO(1.0)-L Program Management Div | Integration Management Div | GT41000 |
| 6.8.5 6.7.9 | Logistics Product Data Div Supply Support Div | Integrated Products Div | GT42000 |
| 6.6.4 | APEO(1.0)-L Program Management Div | In-Service Support Div | GT43000 |



NAVAL AIR WARFARE CENTER TRAINING SYSTEMS DIV

Orlando, FL

| CAO Organization | | MAO Organization | |
|--------------------------|--|---|----------------|
| 4.6 5.1 | Human Systems Dept Integrated Systems Experimentation, Evaluation & Test Dept | Training Systems RDT&E Dept | GT50000 |
| 4.2 | Cost Dept | Cost & Schedule Analysis Div | GT51000 |
| 4.6.2 | Advanced Simulation Div | Advanced Simulation Div | GT52000 |
| 4.6.3 | Training Analysis, Design & Evaluation Div | Training Analysis Design & Evaluation Div | GT53000 |
| 4.6.4 | Training Systems ISE Div | Training Systems ISE Div | GT54000 |
| 4.6.5 | Human Integration & Performance Div | Experimental & Applied Human Performance R&D Div | GT55000 |
| 4.6.8 5.1.1 5.1.12 | Training Systems Engineering Div Systems T&E Management Div Integrated Warfare T&E Div | Cross-Warfare Training Systems Engineering & Integrated Test Div | GT56000 |

| CAO Organization | | MAO Organization | |
|-------------------------|--|---|----------------|
| 7.2 5.4.1 | IT/CS Dept RDT&E Infrastructure Div | Digital Dept | GT60000 |
| 7.2.4 | IT/CS Infrastructure & Operations Div | Digital Planning & Management Div | GT61000 |
| 5.4.1 7.2.2 7.2.4 | RDT&E Infrastructure Div IT/CS Appl Integr & Bus Intel Div IT/CS Infrastructure & Operations Div | Digital Operations & Support Div | GT62000 |
| 7.2.6 | Cyber Security Div | Cybersecurity Div | GT63000 |
| 11.7 | NAWC Legal Dept | Office of General Counsel, NAWCTSD | GT90000 |