

A Cooperative Effort

New this year, East Berlin Ambulance 11 and Lake Meade Ambulance 26 are joining efforts to better serve our residents. What does this mean for you? This means that, if you select one of the joint options, you will be covered under the membership if you are transported by East Berlin EMS or Lake Meade EMS.



East Berlin/Lake Meade..... \$100

This option makes you a member of Liberty Fire Company and Lake Meade's Ambulance Membership.

East Berlin/Lake Meade & ALS....\$120

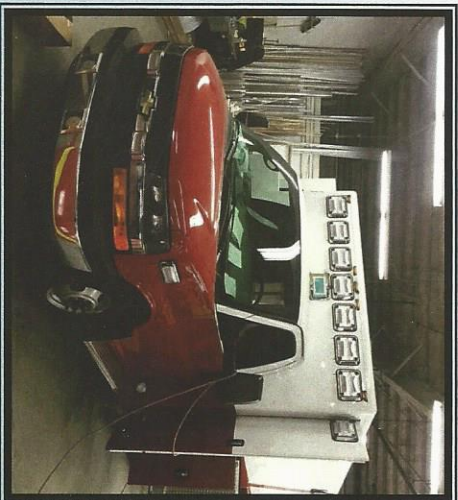
This option makes you a member of Liberty Fire Company, Lake Meade Ems and Hanover Hospital ALS.

A New Transport Adventure

On February 1, 2016 Liberty Fire Company EMS began a non-emergency transport venture. This is the care and transport of patients from hospital to hospital, nursing facility to appointments, hospital to nursing facility and hospital to private residence transports. If you or your family member needs transported and meets the non-emergency requirements, contact us today to set up a transport!!

What Does it Take to Run our Ambulance?

Liberty Fire Company #1 operates 2 ambulances 24/7/365. Our first unit is staffed by one career staff and one volunteer member and our second unit is operated by all volunteer members. Currently we employ 8 paid EMS career staff. Our current operating cost are around \$200,000 per year. This includes things such as: payroll, fuel, medical supplies, insurances and maintenance on our units.



Last year Liberty Fire Company #1 EMS purchased a 2015 Chevy G4500 ambulance. The unit is slated to be here in March. We are very excited to have this unit in station. This unit cost us around \$168,000. Without the support of our community the purchasing of this unit would not have been possible.

East Berlin's

Liberty Fire Company #1

Ambulance Subscription

Drive 2016



What is an Ambulance

Subscription Drive?

No one knows when they are going to experience a medical emergency requiring an ambulance or Advanced Life Support. Now the residents in the East Berlin can be prepared for these unforeseen and unexpected expenses. By joining the Ambulance Subscription Services offered by Liberty Fire Company #1, residents can protect themselves against these unforeseen expenses.



What is Basic Life Support?

The Basic Life Support Unit brings a specialized crew of professional EMTs trained at the Basic Life Support level. These EMTs perform skills such as: Patient Assessment, Vital Signs Monitoring, and Splinting and Bandaging. The BLS Crew brings the ambulance which transports the Patient to the hospital.

***EMMS**
ONE MISSION, ONE TEAM.

What is Advanced Life

Support (ALS)?

Advanced Life Support is a team of Paramedics who are specially trained to manage life threatening injury or illness. The ALS team is equipped with specialty equipment such as: Defibrillators, Pacemaker and Ventilators. In addition to specialized equipment these professionals are trained in IV Therapy, Medication Administration, and Advanced Airway Management. In the event that you are transported at the ALS level of care, that portion will not be covered by your membership.

Billing Facts

Did you know some insurance companies do not pay for ambulance services as a part of their benefits or may only pay a portion of the bill. Insurances such as Medicare will only pay a portion of your bill. What this means is that you are responsible for the rest of the bill.

A Subscription Can Save

You Money

Subscribers should review all options and select the subscription that best suits their needs.

Your subscription is tax—deductible!

As a subscriber, your insurance will be invoiced and you may receive a bill. If you receive the bill, submit your invoice to your insurance. **IF YOU RECEIVE A CHECK, YOU MUST FORWARD IT TO LIBERTY FIRE COMPANY!!**

East Berlin Residents

Subscription Options:

Individual & Family BLS..... \$80

This subscription covers only basic life support services for your family. You will be responsible for all ALS Services billed, and not covered by your insurance.



What if East Berlin is busy?

There are times when East Berlin Ambulance is busy on emergencies and a Mutual Aid Ambulance may respond to you emergency. If you are transported by another ambulance you are not covered for transport. To help ensure better service to our residents, we have partnered with Lake Meade Ambulance in a joint Ambulance Membership.

****See the back panel for details****