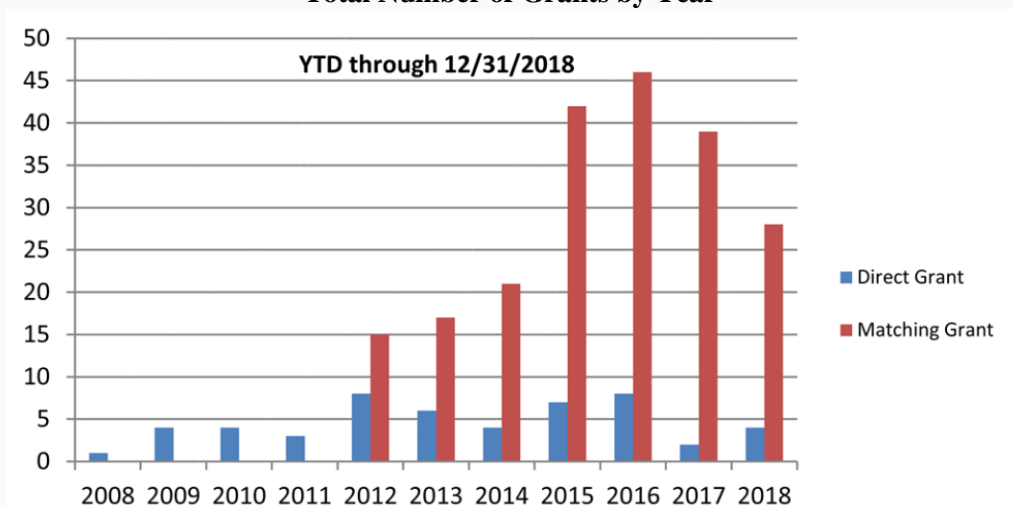


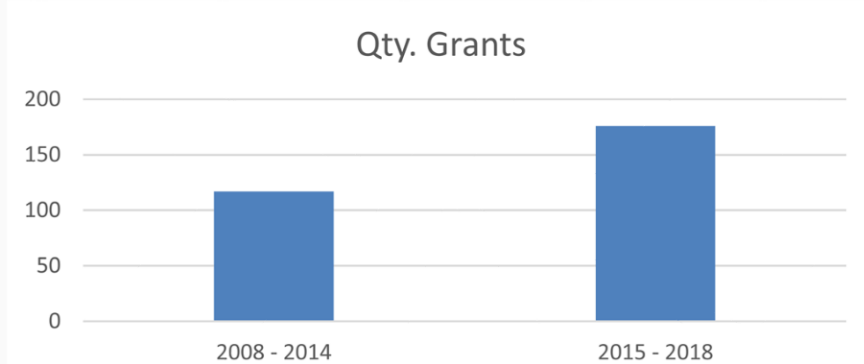
**CELEBRATING OUR 10 YEAR ANNIVERSARY**

## REACH YEAR-END SUMMARY

### Total Number of Grants by Year



- As of 12/31/2018 the REACH board has approved 28 matching grants and 4 direct grants (see chart above for the complete history). Since our inception we have issued a total of 293 matching and direct grants. Thank you to everyone who have submitted applications on behalf of their co-workers.
- Fund Balance as of 12/31/18 is \$1,130,447 – **THANK YOU TO ALL OUR DONORS!!!!**
- Please note the dramatic growth in grants for the following periods (see chart below);



- 2008 – 2014 (**7 years**) – Total of 117 grants issued (Average of 17 per year)
- 2015 – 2018 (**4 years**) – Total of 176 grants issued (Average of 44 per year)

**This demonstrates the need for your continued support of REACH.**

- As of 12/31/2018 we have issued grants totaling \$99,273 for the year. Since our inception we have granted \$646,549.

## Current Initiatives

**Inclusion of Westar into our REACH program update - Effective 1/1/2019 we will be adding two new board members from legacy Westar (see below for their introductions)**

## Board initiated events for 2019

**REACH Car Show and Poker Run - Saturday, August 10, 2019 - Registration is currently open and feel free to visit our website for additional details.**

**REACH 5k Fun Run/Walk -See our website for a future announcement of this event.**

**We want to welcome the following two board members that will represent the two legacy Westar Unions effective 1/1/2019.**

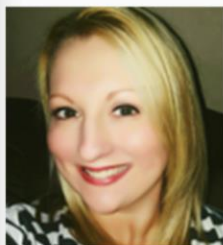


Tonya Cliffman - Local 1523



Larry Anderson - Local 304

**In accordance with the REACH by-laws we added two additional voting members that were previously non-voting Board members.**



Angela Duncan - Fundraising



Tina Andrews - Special Events