

---

## 4CH Mobile Security Video System

Model: 402



### Features:

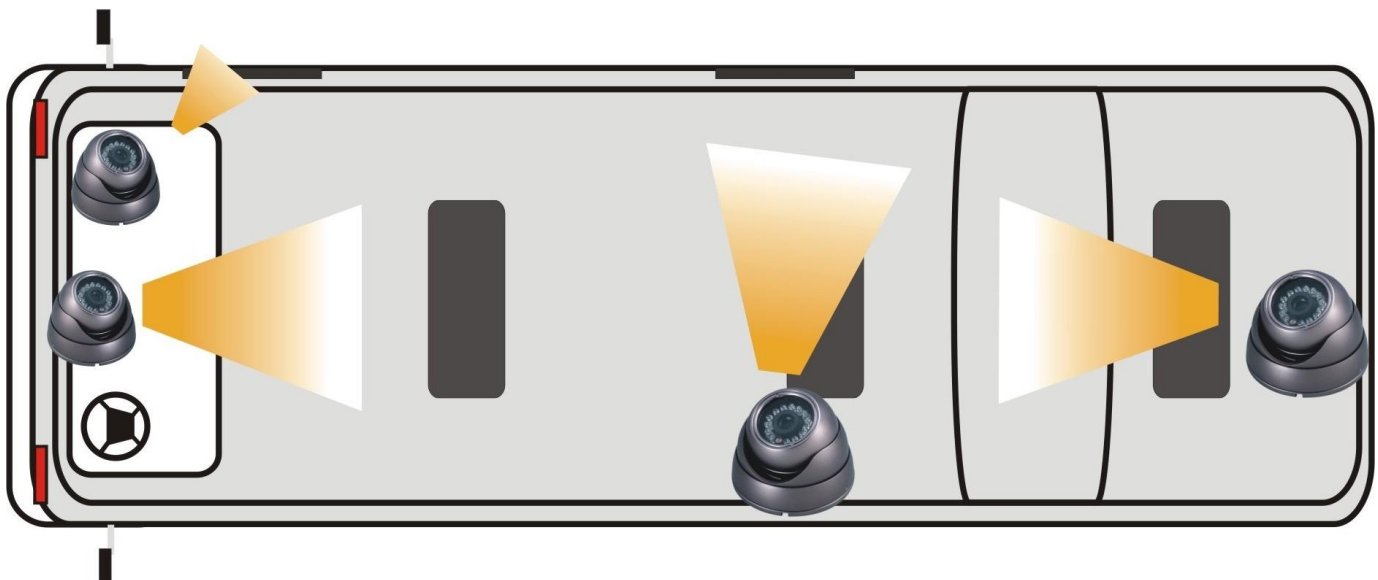
1. Edit serial numbers for car fleet
2. Encryption for accessing software
3. D1 resolution for each channel, NTSC: D1, 704 x 480 / PAL: D1, 704 x 576
4. 32GB SD card/500GB Hard Disk supported(1GB=1hour recording at D1/4ch)
5. Google mapping of GPS information stamp on videos by playback software
6. Auto recording by ignition signal(ignition-off recording up to 24hrs)



SD slot- HDD case- Aviation connector:



Camera installation on bus:





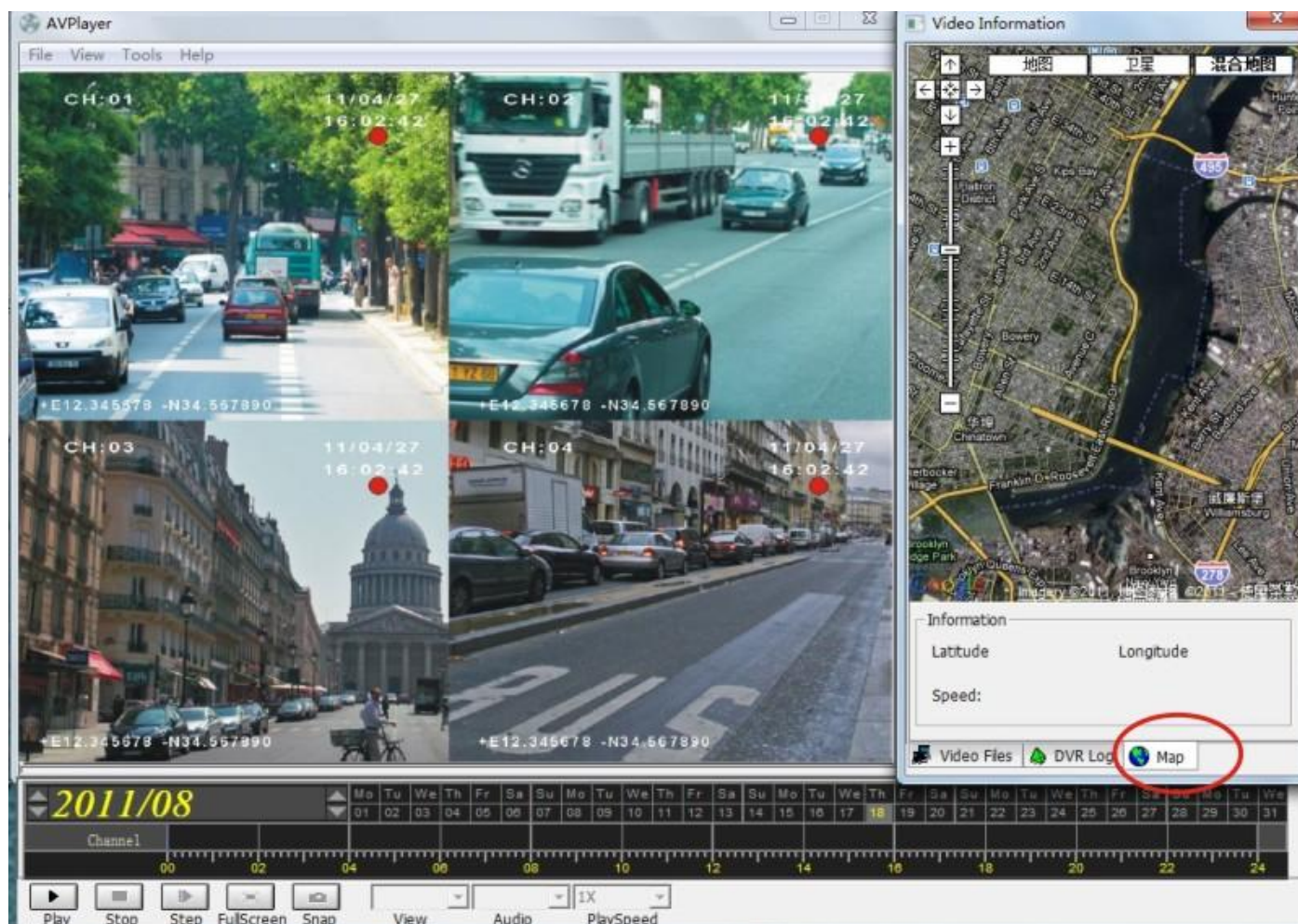
**Accessories:**



**Optional GPS antenna and WIFI:**



## GPS/Google mapping on video by software:



## OEM Package:



## DVR Specification:

Item	Parameter	Description
System	Language	Chinese Simplified/Chinese Traditional/English/Japanese
	Interface	Graphical User Interface
	Security	Administer and user password protected
Video	Video Input	1/2/4 channel video input, 1.0V, p-p, 75Ω, BNC
	Video Output	1 channel video output, 1.0V, p-p, 75Ω, BNC
	Display	1/2/4 channel display
	Video Standard	PAL (25fps) NTSC (30fps)
Audio	Audio Input	1/2/4 channel audio input, 20KΩ, RCA
	Audio Output	1 channel audio output, 500Ω, RCA
	Output level	1V ~2V, p-p
	Recording mode	Audio and video synchronize
	Compression	AAC
Storage	Video Compression	H.264 High Profile
	Resolution	D1 at 100fps
	Video bitrate	D1: 200Kbps ~ 2Mbps
	Audio bitrate	8KB/s
	Storage	SD card, USB2.0 port(For flash disk or hard drive)
Format	AVI	
Sensor	Sensors	1 speed sensor, 1 ignition sensor, 3 common use sensors
Communication	COM	Two RS232 connector and one RS485 connector
	Network	RJ45, 10M/100M Lan port
GPS	supported	
Software	Player	
3 <sup>rd</sup> party player	VLC media player, Storm player, WINAMP	
Firmware update	Via SD card or USB disk	
Power	Power input	DC: +8V ~ +32V
	Power output	+12V@1.5A; +5V@1A
	Power consumption	Less than 5W; less than 0.1W in standby mode
Working temperature	-10℃ ~ +60℃	
Size	9.2CM (Width) ×2.0CM (Height) ×11.5CM (Depth)	

---

**Warranty & Return:**

- 1 year (for quality problems only, return carriage paid by senders).
- All products (except SD CARD/HDD) should be repaired for free within warranty.

**Note:**

**WIFI/GPS/camera is not included by default; contact us if you need any of them**