

Medical Clearance Protocol for Mental Health and Substance Abuse Patients

History

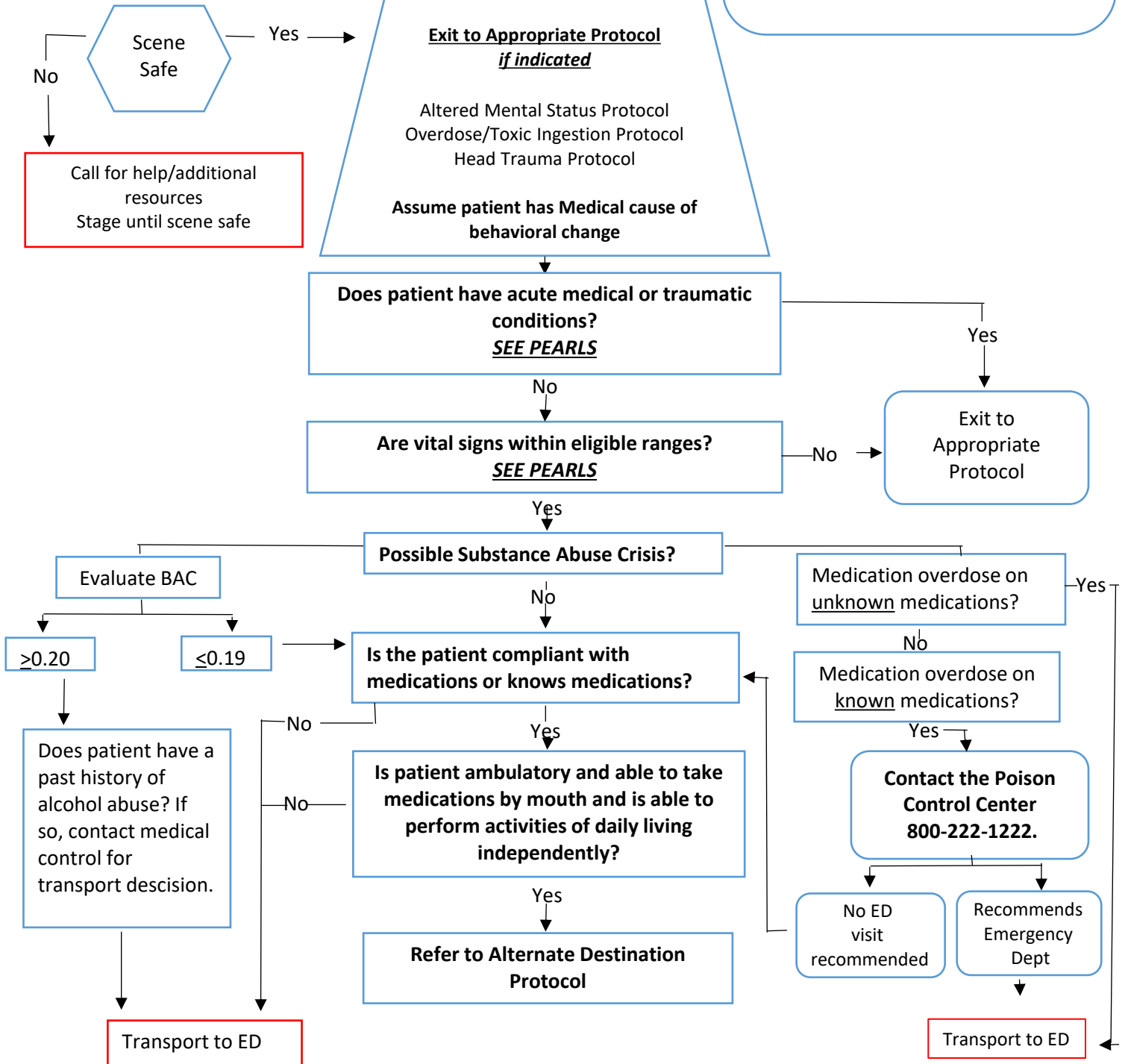
- * Situational Crisis
- * Psychiatric illness/medications
- * Threats of injury to self or others
- * Medical alert tag
- * Substance abuse/overdose

Signs and Symptoms

- * Anxiety, agitation, confusion
- * Affect change, hallucinations
- * Delusional thoughts, bizarre behavior
- * Combative violent
- * Expression of suicidal/homicidal thoughts

Differential

- * Altered Mental Status differential
- * Alcohol Intoxication
- * Toxin/Substance Abuse
- * Trauma
- * Medication effect/overdose
- * Withdrawal syndromes
- * Depression
- * Bipolar (manic-depressive)



PEARLS

Vital Signs Normal Ranges

Heart Rate: 60-120

Respiratory Rate and Pulse Oximetry: within normal limits

Blood Pressure: Systolic blood pressure must be 90-180. Patient must be asymptomatic without any associated complaints (such as chest pain, shortness of breath, headache, or neurological changes).

Blood Glucose: <300 mg/dl without symptoms of DKA such as altered mental status, nausea and vomiting, or odor of ketones.

Temperature: Patients are to be screened for hypothermia and hyperthermia.

Alcohol screening: Patients will be screened using Intoximeter. A reading greater than or equal to 0.20 requires patient to be transported to the Emergency Dept. Minors or patients who have engaged in binge drinking or have no prior history of consumption of alcohol should be transported to the Emergency Department, regardless of intoximeter reading.

Acute medical or traumatic conditions

Ongoing bleeding/wounds: Patients with on-going bleeding or wounds requiring further treatment should be referred to the Emergency Dept.

Medication administration: Patients who require medication administration (i.e. Narcan, Haldol, Benadryl, etc) must be transported to the Emergency Department for evaluation.

Aggressive/Violent patients: Any patient who is aggressive or violent requires transport to the appropriate emergency department.

Minor Patients: If the patient is a minor and the parent or guardian agrees to transport to an alternative destination, the parent or guardian must accompany the patient to the alternative destination.

Minor Injuries: Patient with minor injuries must be evaluated prior to transporting to an Alternative Destination by responding EMS personnel. The clinic will accept patients with minor scrapes or bruises that do not require ongoing medical care.

Alternate Destination Protocol for Mental Health and Substance Abuse Patients

