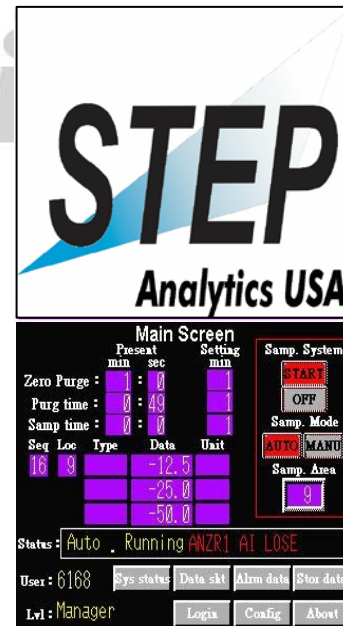
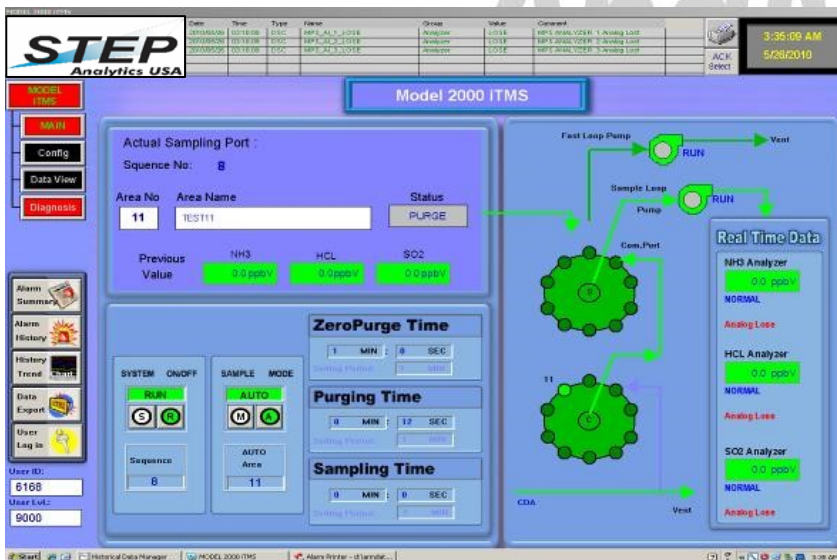


Multi-Point Sampling System Model 2000 iTMS

The Multi-point sampling System, Model 2000 iTMS is a fully software controllable multi valve system designed to allow for sampling of 4 to 54 separate points.

The 2000 iTMS is designed to integrate directly with other STEP system components (analyzer, diluter ect.) to allow for a complete customizable sampling system to meet customer needs.



Product SPECIFICATIONS

Model Number: 2000 iTMS

Mechanical:

- HMI user interface with password login
- 4 to 54 separate sample positions available, (must be specified at time of order)
- Programmable Zero purge time, (1 to 999 minutes.)
- Programmable sample and purge time, (1 to 999 minutes each.)
- Ethernet connection for internal communication
- Wetted Surfaces – Tubing: 316 Stainless Steel/Teflon
- Inlets: External ¼" Swagelok
- Outlets: External ¼" Swagelok
- Temperature Range: 5°C to +50°C
(41°F to +122°F)
- Electrical: 220V 50/60 Hz, 5Amp

