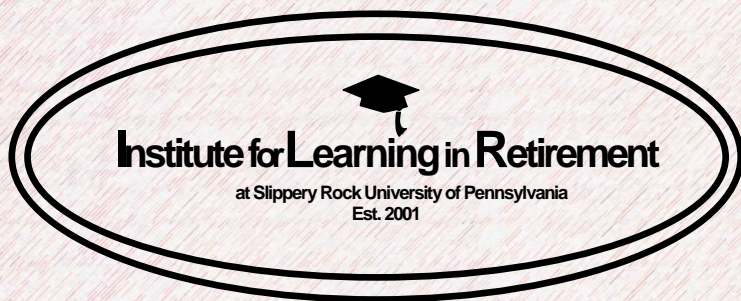


Where will you go?



Spring 2022



Important Dates

Monday, February 14
Monday, February 21
Monday, February 28
Monday, March 7

Sustaining Registration
Regular Registration
Basic & Guest Registration
First Day of Classes/
2nd Chance Registration

Dues

SUSTAINING MEMBER \$100/person

- ◆ EARLY REGISTRATION
- ◆ Up to 12 Classes/Trips + Unlimited **BONUS;
- ◆ Unlimited Zoom Classes;
- ◆ All Zoom Recordings;
- ◆ Donation to help sustain the ILR;

REGULAR MEMBER \$70/person

- ◆ Up to 12 Classes/Trips + Unlimited **BONUS;
- ◆ Unlimited Zoom Classes;
- ◆ All Zoom Recordings;

ZOOM-ONLY MEMBER \$50/person

- ◆ Unlimited Zoom Classes;
- ◆ All Zoom Recordings;

BASIC MEMBER \$25/person

- ◆ Combination of any three (3) Classes/Trips;
- ◆ Recordings for Registered Classes only;

GUEST PASS \$15/person

- ◆ One (1) Class/Trip to “Try Us Out!”



Instructions

All information necessary to register for the ILR Spring 2022 semester classes/trips, including descriptions, times/dates, restrictions, class size limits, instructions, and fees are included in this catalog.

F = In-person at Fowler Building, 165 Elm St., Slippery Rock

Z = Online Zoom

NOTE: *All trips and some classes have limited enrollment.
REGISTER EARLY!*

Registration Link

Registrations will be processed in the order they are received according to membership level.

Use this link to complete the online Registration Form:

<https://tinyurl.com/yck2ahpz>

Payments

An INVOICE & CLASS CONFIRMATION will be sent to you via email or mail (if you have not provided us with an email address) within two weeks of registration.

Questions? Contact the ILR office at:

Class Quick Guide

Adventures in the Nutrition Trade (Z).....	6
'All of Us' Research Program [**Bonus] (F, Z).....	6
Book Club (Z)	6
Carrie Furnace Virtual Tour (Z)	7
Computer Literacy A: Basics [**Bonus] (F).....	7
Computer Literacy B: Microsoft Office [**Bonus] (F).....	7
Developing an Attitude of Gratitude [**Bonus] (F)	7
Faces & Places of Butler in the Civil War (F)	8
Famous Diamonds of the World (F)	8
Film: International Gems 3 (F).....	8
Food for Healthy Aging (F)	9
Glacial Lakes of Western PA (F, Z)	9
'The Great Kate': Katherine Hepburn in Life & Legend (Z).....	9
Hidden Records: Finding Image-Only Genealogy Records Online (F, Z)	10
Hot Topics [**Bonus] (F)	10
How Investor Psychology Affects Us All (Z).....	11
How to Prepare Your Home for Sale [**Bonus] (F, Z)	11
Importance of Listening to Veterans (F, Z)	11
In the Footsteps of Lewis & Clark (F).....	12
InterUrban Railway: PHB&NC Route (F, Z)	12
Introduction to Beekeeping [**Bonus] (F)	12
Looking a Gift Horse in the Mouth (Z).....	13
Now What!? The Accidental Discovery of the Clarion Iron Furnace (F, Z)	13
Outsmarting the Scammers [**Bonus] (Z)	13
Pandemics: Past & Present (F, Z)	14
Pittsburgh's Greatest Snowstorm: Thanksgiving 1950 (Z)	14
Preserving Photos & Albums (Z).....	14
Quebec City: Past & Present (F, Z)	15
Quoting Shakespeare (Z)	15
Rivers of Steel (Z)	16
Sofa Spirituality (Z)	16
Solar in Pennsylvania [**Bonus] (Z)	16
Stolen Art: Nazi Art Thefts in Film (F).....	17
Tomb of the Unknown Soldier: Centennial (F)	17
Tummy Trouble: Gluten, Celiac, & Other GI Problems (F, Z).....	17
Underground Railroad: Through Western PA to Canada (F)	18
Understanding ADHD (F).....	18
Voyage into the Mediterranean: Wonders of Antiquity (F, Z)	18
Washington's Trail – 1753 (F).....	19
Writer's Circle (Z).....	19
Yoga for Everyone (F).....	19

Trip Quick Guide

zp-Wind-up Picnic & Annual Member Meeting [**Bonus].....	20
zt-Biking @ Allegheny River Trail	20
zt-Climate Change in Western PA @ Munnell Run Farm	20
zt-Dinosaur Tour @ Carnegie Museum of Natural History	20
zt-Eagles @ Pymatuning State Park.....	21
zt-Freeport Road Adventure.....	21
zt-Hiking @ Moraine State Park.....	21
zt-Luncheon Out	21
zt-Opera: Backstage Tour & Brown Bag Concert.....	22
zt-Opera: Blue	22
zt-Opera: Carmen	22
zt-PNC Park Tour.....	23
zt-Signs of Spring @ Munnell Run Farm	23
zt-Volant Picnic @ Volant Dam & Grist Mill [**Bonus]	23
zt-Wine Tasting & Lunch Series	23

Amazing Instructor/Facilitator Bios begin on p 24

COVID POLICY

Due to the SRU directives, all those entering the Fowler Building as ILR members or visitors must wear face coverings, regardless of vaccination status. Instructors must wear masks or shields. This does not apply to Zoom classes. Please see p.22 for the COVID policy for Pittsburgh trip venues. For other trips, please consult the trip facilitator.

By registering for any in-person classes or trips, you are agreeing to the ILR Liability Waiver as posted on our website.



LIKE us on Facebook!

ILR—Institute for Learning in Retirement

Class Descriptions

Adventures in the Nutrition Trade (Z)

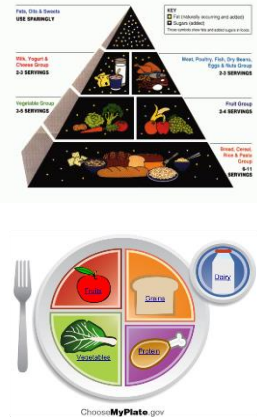
Ken Kaszak



This class will discuss the book Cut Your Calories...Now! by the author Ken Kaszak which details his adventures in the business of nutrition and why the NAI (Nutrition Advice

Industry) is often in conflict and always contradictory. This class will explore how he became interested in the subject and lessons he learned applying economic analysis and investment research principles to nutrition and fitness, etc. Finally, the author will detail his journey that led to writing his book.

Mon. May 09; 10:00-11:30



'All of Us' Research Program [Bonus] (F)**

Emmy Hackshaw, Kathryn Hartman

Tues. April 26; 12:00-1:30

'All of Us' Research Program [Bonus] (Z)**

Emmy Hackshaw, Kathryn Hartman

Mon. May 02; 10:00-11:30



What is the 'All of Us Research Program,' and how is it helping to advance medicine? Why should I participate in medical research? How is the 'All of Us Research Program' different than other research programs?

Book Club (Z)

Carol Holland, Sandy Stevenson



Love to read? Here's your chance to discuss a wide variety of books with other bibliophiles. We read fiction, non-fiction, memoirs, biographies, and histories to name a few, and YOU get to choose the selections for the following semester! This spring's selections include: All-Girl Filling Station's Last Reunion by Fannie Flagg (March); The Last Apothecary by Sarah Penner (April); and O Pioneers! by Willa Cather (May).

3rd Tues. each month, March 15; April 19; May 17; 12:00-1:30

Class Descriptions

Carrie Furnace Virtual Tour (Z)

Kirsten Paine, Rivers of Steel Interpretive Specialist

From 1884 to 1982, the Carrie Blast Furnaces roared on the banks of the Monongahela River. The iron produced in this massive foundry was turned into the steel that made the American 20th century. Join us on a virtual tour of the historic structures and learn about the history of the Carrie Blast Furnaces, how each major piece of machinery worked, and how the site is being reimagined through 21st-century perspectives.



Mon. May 23; 10:00-11:30



Computer Literacy A: Basics [Bonus] (F)**

Delia Draghiciu, Bob Gropp

Learn basic computer concepts, terminology, file organization, and navigation. Students will become comfortable using email and the internet for research, bill pay, banking, shopping, social media, and buying/selling online. MAXIMUM OF 8.

Tues. & Thurs., March 08, 10, 15, 17, 22, 24, 29, 31; April 05, 07; 2:00-4:30

Computer Literacy B: Microsoft Office [Bonus] (F)**

Delia Draghiciu, Bob Gropp

Learn how to create and format a variety of Word documents. Create and use simple spreadsheets with Excel. Create a PowerPoint slide show. MAXIMUM OF 8.

Tues. & Thurs., April 05, 07, 12, 14, 19, 21, 26, 28; May 03, 05; 2:00-4:30.

Developing an Attitude of Gratitude [Bonus] (F)**

Ruth Leo



Winter doldrums can add to feelings of gloom and depression. 'Older folks' complain at times of the perceived ingratitude of youth, calling it a sense of entitlement. We will use this time to identify ways to express & teach gratitude.

Mon. March 14; 2:00-3:30

Class Descriptions

Faces & Places of Butler in the Civil War (F)

Bill May



Join storyteller Bill May of Butler as he shares with us the stories of the cannons and Civil War Monument in Butler's Diamond Park, the woman who played an amazing part in the escape of John Wilkes Booth, the Civil War Orphans Home and, of course, fascinating stories of the men from Butler who fought in our nation's greatest conflict.

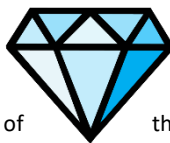
Mon. March 07; 2:00-3:30



Famous Diamonds of the World (F)

Dale Perelman

We will learn basic gemology and the surrounding several of the great diamonds of Cullinan, the Regent, the Koh-I-Noor, and the replicas of many of these famous stones will be presented.



history and romance the world including the Hope, among others. Glass

Tues. April 12; 12:00-1:30

Film: International Gems 3 (F)

Ken Harris

Nine exquisite masterpieces of international filmmaking, opening with *Ugetsu* (Tales of Moonlight and Rain, 1956) by Kenji Mizoguchi, widely recognized in Japan as that country's greatest filmmaker, followed (in an order to be determined) by *Diva* (France, 1981); *L'Atalante* (France, 1934); *Blancanieves* (Snow White, Spain, 2011); *The Band's Visit* (Israel, 2007); *The Double Life of Veronique* (Poland-France, 1991); *In the Mood for Love* (Hong Kong, 2000); *The Spirit of the Beehive* (Spain, 1973); and a film from Germany or Switzerland yet to be selected. Each film is subtitled in English, shown without interruption, followed by an appreciation by the instructor, and a discussion of questions and motifs growing out of the movie.

Wed. March 09, 16, 23, 30; April 06, 13, 20, 27; May 04; 2:00-4:30



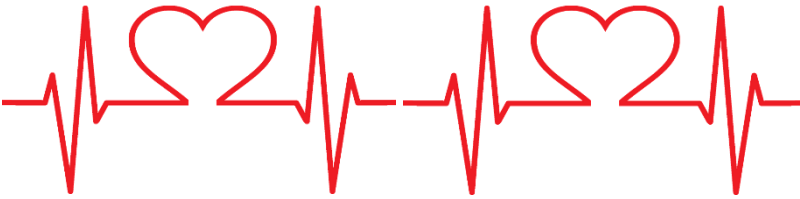
Class Descriptions

Food for Healthy Aging (F)

Susan Lumley

The fate of your brain is in your food -- not your genes -- according to experts. This presentation is based on recent research on how to reduce your risk for dementia and Alzheimer's disease. Identify ways to improve dietary and lifestyle choices.

Mon. May 23; 2:00-3:30



Glacial Lakes of Western PA (F)

Polly Shaw

Mon. March 07; 12:00-1:30

Glacial Lakes of Western PA (Z)

Polly Shaw

Tues. April 05; 7:00-8:30

Thousands of years ago, the area's north-flowing creeks were blocked by the encroaching south-moving glaciers. Slippery Rock, Wolf, and Muddy Creeks, and a section near today's historic McConnell's Run grist mill, all backed up and flooded the valleys where they once ran freely. These glacial lakes were named Lake Watts, Lake Prouty, and Lake Edmund. Much attention has been paid to Lake Watts, the predecessor of today's Lake Arthur in Moraine State Park. Let's look at the larger picture.

'The Great Kate': Katherine Hepburn in Life & Legend (Z)

Steve Cicero

With a record four Best Actress Oscars and a career spanning more than 60 years, Katherine Hepburn is widely considered the greatest female star in Hollywood history. Described as headstrong, sophisticated, and fiercely independent, she carved a unique path on stage and screen, as well as in her personal life. This class will present the fascinating life, loves, and legacy of this remarkable woman.



Wed. March 09; 7:00-8:30

Class Descriptions

Hidden Records:

Finding Image-Only Genealogy Records Online (F)

Margaret Hewitt

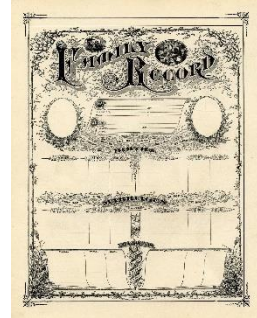
Mon. March 21; 2:00-3:30

Hidden Records:

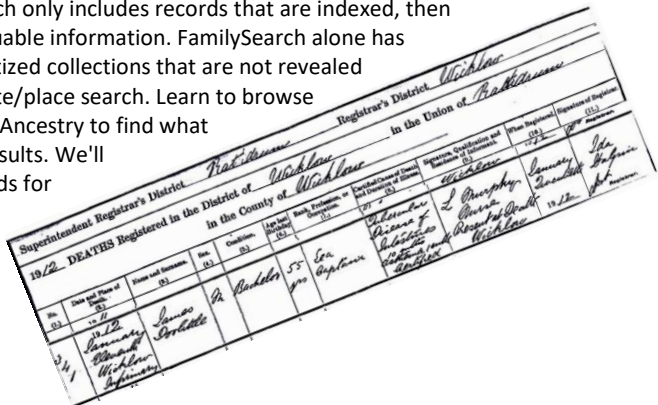
Finding Image-Only Genealogy Records Online (Z)

Margaret Hewitt

Mon. May 16; 10:00-11:30



If your online genealogy search only includes records that are indexed, then you can easily be missing valuable information. FamilySearch alone has thousands of image-only digitized collections that are not revealed during a traditional name/date/place search. Learn to browse records on FamilySearch and Ancestry to find what you need and expand your results. We'll also demonstrate workarounds for image-less results on Ancestry.



Hot Topics [**Bonus] (F)

Ray Yovanovich

Some controversies are 'hot', others just persistent. Participants will select those they consider timely and discuss one at each session. We exchange information and points-of-view without any intention of reaching agreement - insight and enlightenment are all we seek in a congenial setting. Our first topic will be 'The most controversial topic on today's news.'

Every Thursday

March 10, 17, 24, 31;

April 07, 14, 21, 28;

May 05, 12, 19, 26; 12:00-1:30



NOTE: THIS CLASS MEETS EVERY WEEK FOR DISCUSSION.

Class Descriptions

How Investor Psychology Affects Us All (Z)

Ken Kaszak

This class combines psychology with finance. We will discuss how investors think about money and the biases they use to make decisions. We will also discuss the concept of 'anchoring' where people use irrelevant criteria to make and then defend purchase decisions.

Wed. April 27; 7:00-8:30



How to Prepare Your Home for Sale [Bonus] (F)**

Kris Callen, Jen Reilly

Mon. March 28; 12:00-1:30

How to Prepare Your Home for Sale [Bonus] (Z)**

Kris Callen, Jen Reilly

Tues. May 10; 10:00-11:30

Selling your home can be a difficult and stressful decision if you are not educated in the process. Kris and Jen will explain the steps involved beginning with how to know when it's time to make your move.

Importance of Listening to Veterans (F)

Todd DePastino

Mon. May 02; 12:00-1:30

Importance of Listening to Veterans (Z)

Todd DePastino

Tues. March 29; 10:00-11:30



Todd is a historian focused on listening, and the stories he's heard are largely about war — some beautiful and heartbreaking, others gut-wrenching. Todd is co-founder and director of the Veterans Breakfast Club, a 501(c)(3) nonprofit organization.

Class Descriptions

In the Footsteps of Lewis & Clark (F)

Jessie McMenamin

Exploring the newly acquired land known as The Louisiana Purchase (& beyond to the Pacific Ocean) took Lewis and Clark about 2 1/2 years. Jessie returns to enthusiastically share more details of this historic event following an 18-day Road Scholar trip she and her husband took that followed the 'Corps of Discovery' route from St. Louis, Missouri westward.



Tues. March 08; 12:00-1:30

InterUrban Railway: PHB&NC Route (F)

Polly Shaw

Mon. May 16; 2:00-3:30

InterUrban Railway: PHB&NC Route (Z)

Polly Shaw

Mon. April 11; 10:00-11:30

Between 1908 and 1931, the interurban railway was the way to travel distances without using a car. As a streetcar line, it used electric from overhead lines to power the motors, rather than a locomotive. The popular railway PHB&NC (or 'Harmony Route') ran from Pittsburgh to Harmony, Butler, Evans City, Ellwood City, and New Castle.



Intro to Beekeeping [**Bonus] (F)

Tammy & Galen Mayle

Like honey? Attend this beekeeping class if you are curious as to what it takes to be a keeper-of-the-bees or if you are just interested in the life cycle of the bees and the way they reproduce.

Find out how a honeybee hive is constructed with a hands-on demonstration of a full-size hive. Learn the roles of the queen, worker, and drone bees; the difference between nectar, honey, and pollen and where they come from; and how bees and flowers share a mutually beneficial relationship. There's more than just honey!



Tues. May 03; 12:00-1:30



Class Descriptions

Looking a Gift Horse in the Mouth (Z)

Steve Cicero

How often do we quote phrases that make no sense when you think about them? Learn the story behind many of these odd little idioms. Please feel free to bring one or two of your favorites, but make sure you can share the meaning with everyone. Together we will all try very hard not to 'bark up the wrong tree!' Don't 'turn a blind eye' to this great class.

Tues. March 15; 7:00-8:30



Now What!? The Accidental Discovery of the Clarion Iron Furnace (F)

Eric Scuoteguazza

Mon. April 18; 12:00-1:30

Now What!? The Accidental Discovery of the Clarion Iron Furnace (Z)

Eric Scuoteguazza

Tues. May 17; 10:00-11:30

Built in 1829, the Clarion Iron Furnace was the first of its kind in then Iron County, Pennsylvania. Learn about the furnace and its contribution to Pennsylvania's iron industry and discover how our lost historical treasures are treated under federal preservation laws and recovered when we are fortunate enough to come across them.

Outsmarting the Scammers [Bonus] (Z)**

Traci Conlon

Incidents of fraud are on the rise, and scammers' tactics are becoming more complex. This presentation will discuss how to spot red flags that may indicate a fraudulent encounter, resources to use in the event you or loved ones are targeted, and steps you can take to help protect yourself and loved ones.

Tues. May 03; 10:00-11:30



Class Descriptions

Pandemics: Past & Present (F)

Kathy Flood

Tues. March 29; 12:00-1:30

Pandemics: Past & Present (Z)

Kathy Flood

Tues. March 8; 10:00-11:30

The emergence and spread of infectious disease with pandemic potential and impact has occurred frequently throughout history, including the ongoing SARS-CoV pandemic. Diseases discussed will include plague, cholera, influenza, polio, and corona viruses, their impact on humanity, and lessons learned and/or ignored.



Pittsburgh's Greatest Snowstorm: Thanksgiving 1950 (Z)

David Call



Pittsburgh's biggest snowfall on record occurred in November 1950. Two to three feet of snow buried the region, trapping people in place and halting all normal life; even the great steel mills closed. Not just an ordinary winter storm, Superstorm 1950 brought record ice and flooding to central Pennsylvania, hurricane-force winds to New England, and extreme cold to the Deep South. Killing more

than 300, it was the most expensive weather-related disaster at the time. This presentation will focus on the effects in Western Pennsylvania, and explore what might happen if a similar storm occurred today.

Tues. March 22; 10:00-11:30

Preserving Photos & Albums (Z)

Hilary Walczak

Learn how to organize, store, and preserve your family photos and albums, as well as best practices for digitization.

Mon. April 25; 10:00-11:30



Class Descriptions

Quebec City: Past & Present (F)

Verna Call, Tom Call

Mon. April 04, 11; 12:00-1:30

Quebec City: Past & Present (Z)

Verna Call, Tom Call

Mon. March 07, 14; 10:00-11:30



The history of Quebec extends back thousands of years with the Algonquian people who called the area Ke'bec meaning 'where the river narrows.' In 1535, French explorer Jacques Cartier started trading with the natives. In 1608, French explorer Samuel de Champlain founded Quebec City, thus beginning the history and growth of the French colony in North America. Come join us for a sightseeing tour that includes fascinating stories and hidden histories about the past and present life of Quebec City and nearby Isle of Orleans.

Quoting Shakespeare (Z)

Ruth Cole



Shakespeare is a favorite for quoting -- both in and out of context. This class will spend time looking at multiple familiar Shakespearean quotations from the context of the play or the sonnet, as well as its potential in a variety of situations. Class members will be encouraged to share their own interpretations of these words and ask questions about the possibilities. Hopefully, increased knowledge and potential use will emerge.

Wed. April 06, 13; 10:00-12:00.

Class Descriptions

Rivers of Steel (Z)

Brianna Horan, Rivers of Steel Manager of Tourism

Rivers of Steel has been showcasing southwestern Pennsylvania's industrial and cultural heritage for more than 25 years. What began as a community effort to preserve the stories of the men, women, and communities that fueled the local steel industry is now a robust non-profit organization that stewards the eight-county Rivers of Steel National Heritage Area (which includes Butler) by telling the nationally important stories of the region's workers and supporting a vision for the future that is built on the past. Join us to learn about the historic sites and modern riverboat that Rivers of Steel operates, in addition to its rich programming in areas of historic preservation, heritage tourism, STEM education, industrial arts and American crafts, community partnerships, economic development, and environmental conservation.



Wed. May 18; 10:00-11:30

Sofa Spirituality (Z)

Rev. Liddy Barlow, Rabbi Ron Symons

From the comfort of your own living room, join us on the virtual sofa! We invite people of all backgrounds into conversation as we learn more about the varied spiritual traditions of our communities. Each session includes two short interviews with leaders from diverse faith traditions (Jewish, Buddhist, Muslim, Christian, and more!), followed by our dialogue together. We'll connect about our own experiences, our fascinating differences, and our shared humanity. These conversations are both a window into another person's spirituality and a mirror to reflect on our own.

One Wednesday per month: March 16; April 20; May 11; 10:00-11:30

Solar in Pennsylvania [Bonus] (Z)**

Monica Carey

We will give an overview of the history and current landscape of solar energy in Pennsylvania. There will be a discussion of the benefits and economics of going solar as a homeowner, the outlook for solar policy, and the future of solar in Pennsylvania.

Tues. April 26; 10:00-11:30

Class Descriptions

Stolen Art: Nazi Art Thefts in Film (F)

Ruth Leo



Come discuss the interweaving of Nazism with stolen European Jewish art treasures. By 1938 German laws had been rewritten and German Jews were stripped of citizenship, art collections, furniture, homes, and other possessions through a process of Aryanization. Two films will be shown and discussed: *The Monuments Men* (2014); and *The Woman in Gold* (2015).

Mon. March 28; April 04; 2:00-4:00

Tomb of the Unknown Soldier: Centennial (F)

Dennis McMahon III

Come hear the fascinating history of the Tomb of the Unknown Soldier at Arlington National Cemetery as it celebrates its Centennial. We will also discuss the history and what it takes to become a sentinel at the Tomb.

Tues. May 24; 12:00-1:30



Tummy Trouble: Gluten, Celiac, & Other GI Problems (F)

Kathy Flood

Tues. May 10; 12:00-1:30

Tummy Trouble: Gluten, Celiac, & other GI Problems (Z)

Kathy Flood

Tues. May 24; 7:00-8:30

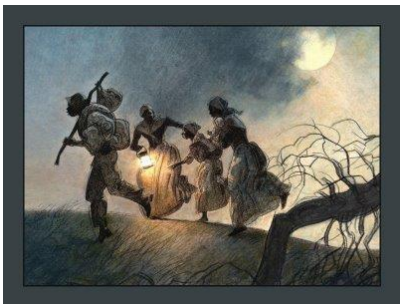
The difference between gluten intolerance and celiac disease will be discussed as well as other related food intolerances.



Class Descriptions

Underground Railroad: Through Western PA to Canada (F)

Bill May



Join storyteller Bill May of Butler as we buy a ticket on the Underground Railroad and travel virtually from station to station and hear stories of escape by fugitive slaves through Western Pennsylvania. The talk is based on hundreds of hours of research. Bill will share true stories of escaped slaves from Pennsylvania's southern border to their final destination across the Niagara River to Canada.

Mon. March 21; 12:00-1:30

Understanding ADHD (F)

Martin Bright

The prevalence of ADHD has been on the rise. This presentation will begin with a definition of the disorder, its variations, and how it presents at various stages of life. Next, treatment options will be discussed and possible life courses with and without treatment will be considered. Group discussion will focus on factors affecting the increase in diagnoses, as well as how to best interact with and validate loved ones with ADHD.

Tues. March 22; 12:00-1:30

Voyage into the Mediterranean: Wonders of Antiquity (F)

Verna Call

Mon. May 16, 23; 12:00-1:30

Voyage into the Mediterranean: Wonders of Antiquity (Z)

Verna Call

Wed. March 23, 30; 7:00-8:30



Welcome to an adventure into the ancient cultures of civilizations along the Eastern Mediterranean. Many of the monuments and artifacts go back thousands of years. These are spectacular wonders of antiquity, such as the Acropolis in Athens, Hagia Sophia in Istanbul, Holy Sepulcher in Jerusalem, Tombs of the Kings in Cyprus, and Giza Pyramids. Part of the adventure is not only viewing these ancient places but seeing them in context of their legacy in modern civilization.

Class Descriptions

Washington's Trail - 1753 (F)

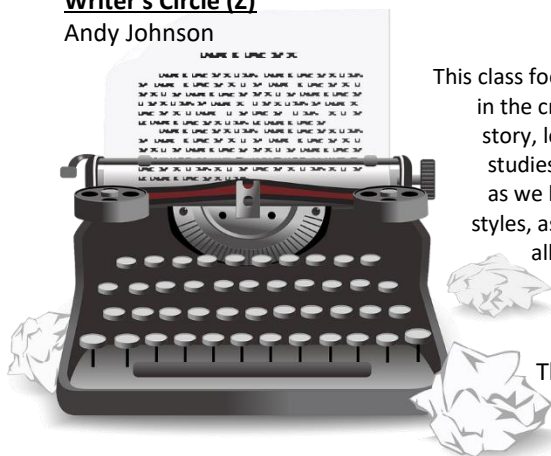
Martin O'Brien

This will be a discussion of the actions of the French forces to solidify their claim to New France, including Western Pennsylvania, in the late 1700's.

Mon. April 11; 2:00-3:30

Writer's Circle (Z)

Andy Johnson



This class focuses on developing the writer's skills in the creative writing genres of poetry, short story, longer fiction, vignettes, and character studies. We will actively engage each other as we learn creative writing techniques and styles, as well as editing techniques. Writers of all levels will be encouraged to submit their prepared manuscripts to the ILR's literary magazine *The Eclectic*.

Thurs. May 05, 12, 19, 26; 2:00-4:00

Yoga for Everyone (F)

Gail Weinand

Have you ever wanted to try yoga? Come join our group for simple yoga postures and chi-motion moves in a chair or standing. We will also practice breathing exercises and relaxation techniques. See Confirmation Slip for details.

Mon. April 18, 25; May 02, 09; 2:00-3:30



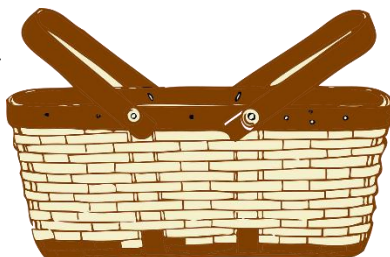
Trip Descriptions

zp-Wind-up Picnic & Annual Member Meeting [**Bonus]

ILR Vice President, Rich Thornhill **Fee: FREE**

Join us as we mark the end of another awesome ILR semester with free food and our annual membership meeting.

Sat. June 04; 4:00-6:00



zt-Biking @ Allegheny River Trail

Rich Thornhill **Fee: FREE**



This trail was built on a portion of the old Pennsylvania Railroad that ran from Pittsburgh to Buffalo. This section is a flat, smooth asphalt surface. It is bordered on the west by the Allegheny River and on the east mostly by woodland. For a more complete description of the trail see <http://eagle.clarion.edu/~grads/avta/ART.html>. See Confirmation Slip for details.

Fri. May 20; 1:00-3:00

zt-Climate Change in Western PA @ Munnell Run Farm

Kelcy Marini

Fee: \$3.00

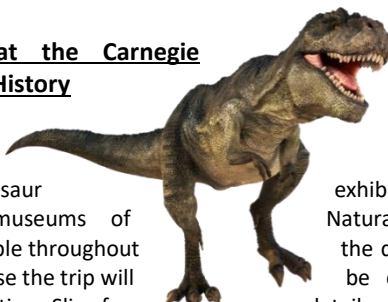
Join the Mercer County Conservation District's Environmental Education Coordinator to discuss how you have experienced change in Western Pennsylvania over your lifetime. Have you noticed changes in your garden, in wildlife, or in seasonal activities like fishing or hunting? Explore with us how your experiences connect to the ways climate change is operating in our region, and what we can do to make a difference. We'll end the trip with a walk-and-talk. See Confirmation Slip for details.

Fri. March 18; 1:00-2:30

zt-Dinosaur Tour at the Carnegie Museum of Natural History

Kathy Flood

This is a docent-led tour of the dinosaur admission to the museums of tours are usually available throughout group size of 9 otherwise the trip will friends! See Confirmation Slip for



**CARNEGIE
MUSEUM OF
NATURAL
HISTORY**

exhibit. Price includes Natural History and Art. Other the day. There is a minimum be canceled – invite your details.

Fri. March 11; Meet at 11:00

Fee: \$11.00

Trip Descriptions

zt-Eagles @ Pymatuning S.P.

Emily Borcz

Fee: \$5.00



In the 1980s there was only one nesting pair of Bald Eagles in Pennsylvania and that nest was located at Pymatuning State Park. Join park environmental education staff to learn of the remarkable comeback of this majestic raptor. We will tour the park and surrounding areas as we watch nesting, perching, and soaring eagles. We will observe mature and immature bald eagles and various migrating waterfowl. The group will stop for lunch, see Confirmation Slip for details.

Fri. March 25; 10:00-3:00.

zt-Freeport Road Adventure

Steve Cicero

Fee: \$15.00

Our trip takes us south from Butler PA on Route 356 to visit some of the hidden gems of Butler County. Cooper Cabin, built around 1810, is the oldest family home in the county and our first stop. From there we move on to Lernerville Speedway, where local drivers have raced on this legendary dirt track for over half a century. At both sites we will hear fascinating stories of local history from expert guides. There will also be some surprises along the way. Lunch on your own at one of many excellent local eateries.

See Confirmation Slip for details.

Wed. May 11; 10:00-1:00

zt-Hiking @ Moraine State Park

Rich Thornhill

Fee: FREE



Join us as we hike to the dam and solar panels at Moraine State Park. See Confirmation Slip for details.

Fri. May 06; 1:00-3:00.

zt-Luncheon Out A

Henry Anna, Teresa O'Malley

Fee: FREE

Join us at area restaurants for good food and great companionship. You will pay for your own lunch. Facilitators will choose restaurants, but will take into consideration member requests. Instructions will be conveyed via email. Meets every other week.

Every Other Thursday, March 10, 24; April 7, 21; May 05, 19; 11:30-1:30.

Trip Descriptions



COVID policy per Pittsburgh venues: Participants must be masked, vaxxed, and show vaccine proof & photo ID at the door. See theater website for details and alternatives.

zt-Opera: Backstage Tour & Brown Bag Concert

Marianne Hooker

Fee: FREE

Spend a few hours at the Pittsburgh Opera headquarters and see how the Westinghouse Air Brake Factory has been transformed into the Bitz Opera Factory, the home of Pittsburgh Opera's administration and production facilities. We'll observe some behind-the-scenes activity, have a tour of the costume shop, and learn about some of the many facets of opera production. We'll also hear some opera singers up close, as part of the Opera's *Brown Bag Concert* series.

See Confirmation Slip for details.

Sat. April 09; 9:15-3:45

zt-Opera: Blue

Dale Doran

Fee: \$43.00

Reflective of an all-too-familiar American headline, *Blue* centers on the hopes and fears of a young Black couple as they raise their son. Tony Award-winning composer Jeanine Tesori and NAACP Theatre Award-winning librettist Tazewell Thompson's new opera is inspired by contemporary events and Black literature. Exploring race, violence, and reconciliation, *Blue* places timely issues at the forefront of modern opera and invites audiences to the emotional epicenter of their impact. www.pittsburghopera.org/Blue.

Sun. May 01; 12:00-6:00

zt-Opera: Carmen

Dale Doran

Fee: \$43.00

Bizet's *Carmen* shocked the audience at its premiere in 1875 with its depiction of the gritty underbelly of life. *Carmen* is defiant, erotic, mysterious, jealous, superstitious, and ultimately doomed. Caught up in her passion are Don Jose, Escamillo, and Micaela, a wild passion that can end in no other way but death. *Carmen's* devil-may-care habanera, seductive seguidilla and the 'Toreador Song' highlight one of the all-time most popular operas. Join us for the pre-opera lecture at 1:00 pm before the matinee performance at 2:00 pm. Class fee covers your opera ticket. You may bring a bag lunch to eat before the lecture. See Confirmation Slip for details.

Sun. April 03; 11:00-5:00.

IMPORTANT NOTES FOR OPERAS:

Fee covers ticket only. No refunds after deadline. See Confirmation Slip for details. There may also be a class held the week of the performance for anyone who may want to participate. Information will be relayed via email to those interested.

Trip Descriptions

zt-PNC Park Tour

Kathy Flood

Fee: \$10.00



PNC Park is rated #1 among MLB ballparks by Ballpark Digest and #9 among Pittsburgh attractions. This interactive tour gives guests a broad view of the 38,000 seat facility, its unique architecture and the extensive history of Pittsburgh baseball. This is a 90-minute walking tour. See Confirmation Slip for details.

Fri. April 22; 11:00-1:30

zt-Signs of Spring @ Munnell Run Farm

Kelcy Marini

Fee: \$3.00

Join the Mercer County Conservation District's Environmental Education Coordinator for an interpretive hike to explore the many signs of spring at the farm. We will learn about the local flora and fauna and how they are indicators of the changing seasons. Be sure to dress for the outdoors with the proper clothing and footwear for hiking in the farm and forest. See Confirmation Slip for details.

Fri. April 29; 1:00-2:30



zt-Volant Picnic @ Volant Dam & Grist Mill [**Bonus]

Gail Blakeley

Fees: FREE

Pack a lunch and drink, bring a chair, and enjoy some time with ILR friends, as well as a short overview of the Volant dam & mills. We can share the things we've been doing or just sit and relax. Visiting Volant's shops is on your own. Plenty of parking. No raincheck.

Sat. May 14; 12:00-2:00



zt-Wine Tasting & Lunch Series

Kathy Flood, Teresa O'Malley

Fees: FREE

This group will visit local wineries that offer wine tasting and then have lunch at the winery or nearby restaurant.

One Thursday per month: March 31; April 28; May 26; 11:00-2:00

Instructor Bios

Henry Anna

Hank is Professor Emeritus of Political Science & Public Administration at SRU, having retired in 1998. A native of Cambria County, PA, Hank has traveled extensively and has so far visited 47 US states and more than 25 countries on 5 continents. He enjoys reading & volunteer work, including Rotary.

Rev. Liddy Barlow

*Rev. Liddy Barlow is the first woman to be installed as Executive Minister of Christian Associates of SW Pennsylvania, an organization that brings together diverse Christians in greater Pittsburgh for the common good. Rabbi Ron Symons is the founding director of the Center for Loving Kindness and Civic Engagement at the Jewish Community Center of Greater Pittsburgh, where he serves as Senior Director of Jewish Life. Together, Ron and Liddy work to build relationships among interfaith spiritual leaders, as they seek to "redefine neighbor from a geographic term to a moral concept." See also **Rabbi Ron Symons**.*

Gail Blakeley

A retired school teacher, Gail leads many trips and offers a variety of classes for the ILR, including wild mushroom identification, workshops on natural dyes, and diaries of women pioneers. She enjoys fine arts, reading, and traveling.

Emily Borcz

Emily graduated from SRU with a BS in Environmental Science. She has been working as an Environmental Educator with PA State Parks since 2006 in a variety of parks and environmental education centers. She is currently the Environmental Educator at Pymatuning State Park. She enjoys many different outdoor recreation pursuits with family and friends from hiking and backpacking to biking, paddling, and skiing.

Martin Bright

Martin is a professor of Psychology and Social Work at Grove City College. His educational background is in Sociology and Counseling Psychology. Dr. Bright is a Certified Rehabilitation Counselor and has worked as a counselor and case manager in various settings.

David Call

Dave is an Associate Professor of Meteorology and Geography at Ball State University in Muncie, Indiana. He received his BS Meteorology degree from PSU and MS and PhD in Geography from Syracuse University. At Ball State, Dave teaches classes in broadcast meteorology, radar meteorology, physical geography, and storm chasing, among others. His research examines how society deals with hazardous winter weather. His most recent project evaluates the effects of weather on traffic accidents in Utah, and he is currently working on a book, Superstorm 1950: The Greatest Winter Storm You've Never Heard Of.

Tom Call

Tom enjoys traveling with his wife, Verna. He has a MA in History from Notre Dame of Maryland University. Several of Tom's ancestors were settlers of seventeenth century Quebec.

Verna Call

Verna is a retired ordained minister in the United Church of Christ with a Doctorate of Ministry from Lancaster Theological Seminary. She is an avid reader of European and religious history. She is also an avid photographer and traveler, having toured almost 50 countries on all 7 continents. Verna has created photo album diaries and shares her trip experiences with organizations throughout the area.



Instructor Bios

Kris Callen

*Kris lives in Prospect, PA and has been a licensed Realtor® since 2003 and Branch Manager since 2015. She works for Berkshire Hathaway HomeServices The Preferred Realty. See also **Jen Reilly**.*

Monica Carey

Monica is the Pennsylvania Program Associate with Solar United Neighbors. She is based out of Lancaster County, and works to help people join together, go solar, and fight for their energy rights. When she's not working on solar policy, Monica enjoys baking and singing.

Steve Cicero

Steve is a former history instructor in Butler Area School District. He is active with a number of historical organizations in Western PA as a part-time teacher or volunteer, as well as with several retired educator groups. In addition, he is always looking for ways to promote local history and historical sites through presentations and tours.

Ruth Cole

With her bachelor's and master's degrees from the College of Wooster plus three years of graduate work, Ruth is a Shakespearean from master's thesis through publishing through years of teaching the Bard, including a high school senior elective for twenty-five years. She has taught and lectured at Chautauqua, New York; Road Scholars; and ILR.

Traci Conlon

Traci has been a financial advisor with Edward Jones since 2014. She attended Robert Morris University and graduated with a BS in Business Administration. She and her husband Michael have two children.

Todd DePastino

Todd is founder and Executive Director of the Veterans Breakfast Club, a 501(c)(3) non-profit dedicated to sharing veterans' stories with the public. He is the author of the award winning [BILL MAULDIN: A LIFE UP FRONT](#) (W.W. Norton) and six other books. He has a Ph.D. in American History from Yale University.

Dale Doran

Dale worked in her hometown of Philadelphia for private industry, then as a civil servant for ATF and the U.S. Air Force before moving to complete her degree at SRU. This was followed by 39 years teaching students with autism, learning and behavior challenges.

Delia Draghiciu

Delia has been teaching adult learners since 1995. She holds a bachelor's degree in Philosophy from the University of Bucharest (Romania) and a doctorate in Psychology from the University of Bergen (Norway). She has been teaching basic computing and Microsoft Office classes for the BC3 Adult Literacy and Lifelong Learning programs since 2016. She has been teaching digital literacy classes for the Grove City Education Center for Adults since 2019.

Kathy Flood

Kathy retired after 30 years of practice as a Physical Medicine and Rehabilitation physician, primarily at the Veterans Health Administration. Kathy now fills her time with volunteer work at the Medi Home Hospice office in Butler, BC3 Literacy Program as a GED tutor, and some travel.



Instructor Bios

Bob Gropp

Bob holds a BS in Education from IUP and an MA from Slippery Rock State College. He taught high school English for 5 years in MD and PA and then moved into various management positions for a natural gas pipeline company. He retired in 2019.

Emmy Hackshaw

Emmy's life adventures are based out of Erie, PA where she works and plays with her partner and dog. Emmy has her Master of Health Administration from the School of Public Health at PITT where she is happy to be back working with 'All of Us Pennsylvania.'

Kenneth Harris

Ken is offering his 30th ILR Film Series. He is a professor emeritus (Theater) at SRU and a life-long movie fan.

Kathryn Hartman

Kathryn works as a Senior Research Participant Recruiter for PITT for the 'All of Us Pennsylvania' Research Program, which is focused on precision medicine and creating a million-person database with the NIH. Kathryn has a MS from Walden University and a BA from Westminster. In her spare time, she loves playing with her two dogs, Charlie and Bink, and refinishing furniture.

Margaret Hewitt

Margaret is Special Collections Librarian for the Butler Area Public Library, where she leads the genealogy department and archive. She teaches research courses ranging from the very beginner to advanced techniques. She has an MA in Public History from Duquesne University and became a Certified Archivist in 2019.

Carol Holland

Carol retired after 21 years from SRU as the Director of the Student Counseling Center. She is a licensed psychologist, certified yoga instructor, and certified meditation teacher. Retirement provides her with more time to be the lifelong learner she has always been.

Marianne Hooker

Marianne is a retired realtor from New Castle. She has also worked as a consultant and technical writer.

Andy Johnson

Andy has a BA in Philosophy and English, an MA in Counseling Psychology, and graduate work in World Religions. He misses teaching Intro to Philosophy and Ethics at BC3, enjoys publishing his poetry, and is Executive Director of 'Spoken Word Projects.' Andy is currently finishing his second children's book and continues to work on publishing his poetry while helping others to do the same.

Ken Kaszak

Ken is an investment advisor and writer. His class is accredited by the PA Board of Accountancy to provide CE to CPAs and attorneys.

Ruth Leo

Ruth is a Professor Emerita at SRU where she taught in the department of Nursing for 24 years. Ruth has worked as a registered nurse, a pediatric nurse practitioner, nursing faculty member, and parish nurse. She enjoys family activities, travel, health-care-related community service, serving as a deacon at church, and learning new things.

Instructor Bios

Sue Lumley

Sue taught middle school and high school Family and Consumer Science (Home Economics). She was the food service director at GCC and SRU. She received a BS in Home Economics from IUP and MS in Health Science from SRU.

Kelcy Marini

Kelcy joined the Mercer County Conservation District in October 2021 as their Environmental Education Coordinator. She got her BA in Environmental Studies from Allegheny College and her master's in Sustainability from Chatham University. She enjoys camping, kayaking, and educating others about the environment.

Bill May

Bill is a retired teacher from Lakeview School District. He is the founder of the Butler County Civil War Roundtable and is an avid historian of the Civil War and local history topics. Bill is a speaker and tour guide of the popular 'Butler Ghost Walks' and 'Historic Mansions of Butler' walking tours.

Tammy & Galen Mayle

Galen & Tammy are members of two local bee clubs: Burgh Bees and Sweet Meadow Apiaries. They have completed basic beekeeping courses, as well as attended advanced beekeeping classes and lectures. They successfully over-wintered their first 2 hives. After trapping feral swarms and multiplying their existing hives, they now have 24 hives.

Dennis McMahon III

First Sergeant (1SG) McMahon was a guard at the Tomb of the Unknown Soldier in Arlington National Cemetery from 1987-1988, earning Tomb Guard Badge #320. He served in the US Army until retiring in 2004 as a counterintelligence (CI) special agent, foreign and domestic. He and his wife Lisa have 3 grown children. They reside in Coraopolis, and he works for the US Government.

Jessie McMenamin

Jessie served as ILR Curriculum Committee chair for three years and has been an active member of the ILR. A retired teacher and guidance counselor, she has also taught ILR classes, including: 'Women's Roles in the Civil War,' 'Tips for Economic Travel,' 'One-Room Schools of the Slippery Rock Area,' 'Origami,' and 'Apollo 11.'

Martin O'Brien

Martin graduated from Georgetown College and Georgetown University School of Law. He is a retired President Judge of the Butler County Court of Common Pleas. He currently serves on the Board of Directors for Butler County Community College Foundation, Rivers of Steel Heritage Area, and Washington's Trail-1753.

Teresa O'Malley

Teresa is the mother of two and grandmother of seven. She is employed at the Seneca Valley School District as a substitute for paraprofessionals working with children with special needs and children with autism. She is a life member of the Evans City Ladies' Fireman's Auxiliary and member of the Rubber Dolls Stamping Club.

Dale Perelman

Dale, retired president of the King's Jewelry chain and a GIA graduate gemologist, is the author of nine books including Mountain of Light and The Regent Diamond. He is past president of the Jewelers of America, the Diamond Council of America, and the Pittsburgh chapter of the ASA.



Instructor Bios

Jen Reilly

*Jen lives in Slippery Rock and has been a licensed Realtor® since 2014. She works for Berkshire Hathaway HomeServices The Preferred Realty. See also **Kris Callen**.*

Eric Scuoteguazza

Eric is a Registered Professional Archaeologist at SEARCH with 30+ years of experience adventuring throughout the US and Canadian Arctic to manage archaeological resources. He has also earned master's degrees in Anthropology and Business Administration. During his career, Eric's focus has often been on regulatory aspects of historic preservation.

Polly Shaw

Polly is retired from the Seneca Valley School District. A local state park volunteer for 24 years, Polly is the author of Moraine State Park, Images of Modern America by Arcadia Publishing. She has been interviewed on several local radio stations as well as cable TV, and has presented many public programs on local topics.

Sandy Stevenson

Sandy has a BA in Psychology from Carlow College and an MS in Counseling Psychology from SRU. She retired from SRU as Director of Training and Employee Services where she focused on diversity-related work.

Rabbi Ron Symons

*See **Rev Liddy Barlow***

Rich Thornhill

Rich worked for the USPS for 40 years before retiring. He enjoys biking, kayaking, and hiking, and spending time at his cabin in the National Forest. He is active in the ILR, taking classes and acting as vice president. Rich also leads trips for the Butler Outdoor Club. He has one daughter, one son, one granddaughter, and one great-grandson.

Hilary Walczak

Hilary has been the College Archivist at GCC for the past 10 years where she handles the college's physical and digital collections. She also teaches Gallery Studies and guest lectures regularly. She is on the board of the Three Rivers Archivist, a professional development group for archivists in the Pittsburgh region.

Gail Weinand

Gail is a 1972 SRU graduate with a BS in Physical Education/Recreation. She has managed several fitness centers in Grove City and Butler, PA. She has been instructing aerobics & dance in Slippery Rock for 16 years, and is an independent fitness class instructor for SRU and BC3. She now has her own home studio.

Ray Yovanovich

Ray is an SRSC graduate and retired U.S. Air Force officer. He was involved in Air Force intelligence activities including air intelligence and human source intelligence.