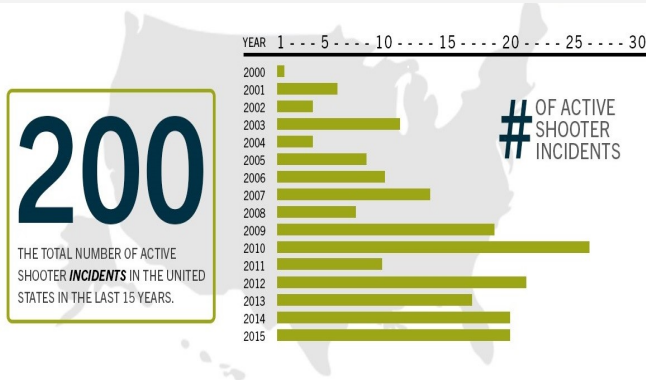


ACTIVE SHOOTER INCIDENTS 2000-2015



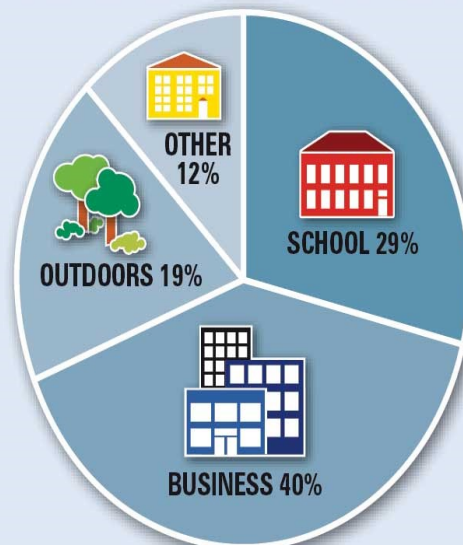
2000 - 2013 MAJORITY OF THE INCIDENTS (90 OUT OF 160) ENDED ON THE SHOOTER'S INITIATIVE - EITHER BY SUICIDE, CEASING TO SHOOT OR FLEEING THE SCENE.

2014 - 2015 MAJORITY OF THE INCIDENTS (26 OUT OF 40) ENDED WITH LAW ENFORCEMENT AT THE SCENE - 14 WERE KILLED BY LAW ENFORCEMENT AND 12 SHOOTERS WERE APPREHENDED.

ACTIVE SHOOTER

Where Are You Most At Risk of Encountering and Active Shooter?

ACTIVE SHOOTER INCIDENTS BY LOCATION



*Statistics Provided by the Federal Bureau of Investigation 2014

Active Shooter Presentation

An outreach ministry of

Side-By-Side Church International

Pastor Kevin Brown
1633 E. 4th Street #112
Santa Ana, CA 92701



Presented By
Kevin Brown

714-321-5701

Transforming Injustice
Locally - Nationally - Internationally

counterter2010@gmail.com
www.sidebysidechurch.com

AWARENESS

While there are many variables involved in why someone commits these horrific acts of violence, there are definite signs to look for to identify an Active Shooter before they create a Mass Casualty Incident (MCI).

Our training will give you the necessary tools to identify an Active Shooter
- BEFORE -
an attack occurs.

RESPONSE

Once an Active Shooter attack begins, there needs to have been a plan in place and practiced to give yourself and those you are responsible for the ability to successfully survive the attack.

The training we offer will teach those in attendance, what steps they can take to survive and if necessary incapacitate the Active Shooter.

Risk Assessment and "HARDENING" Your Location

An added benefit of our training is we will assist you in developing a Risk Assessment and Policies and Procedures to make your location safer from and during an attack.

**"Chaos, panic and fear can only be minimized
-never eliminated-
when it is preceded by
preparation and planning."**

**Are your people ready for an
Active Shooter?**

Risk Assessment



Policy &
Procedure

Training

