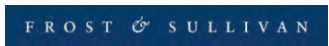


Company Profile

Since the establishment, SonoScape has committed to provide high standard medical equipments for healthcare of human beings. SonoScape specializes in the development and production of diagnostic ultrasound solutions. By introducing advanced imaging techniques, SonoScape's products have improved diagnostic accuracy and therefore enabled better health outcomes. Since 2002, SonoScape's products have reached and benefited millions of people from over 100 countries. With the world in mind, SonoScape will continue providing more effective and accessible healthcare solutions, through persistent innovation and passion for life.

Quote from the Analyst of



"SonoScape Co. Ltd. has exhibited exceptional entrepreneurial capabilities ... The company's priority in maintaining high levels of quality in its product lines is well supported by the negligible after-sales costs associated with its ultrasound systems. Also with the launch of SSI-1000, the hand carried ultrasound with multiple clinical applications; SonoScape has made significant strides towards establishing itself as a global medical equipment manufacturer."

Mr.Krishanu Bhattacharjee

Company Milestone

- 2002: Company Founded in Shenzhen, China
- 2003: Released SSI-1000: the 1st 15" Portable Color Doppler system in China
- 2004: Released SSI-2000: the 1st PC platform Color Doppler system in China
- 2005: Received the "High Technology Company" award from the government
- 2007: Received "CHINA TOP BRAND" in the Medical Equipment Industry
- 2007: Released the 1st Real time 4D ultrasound system in China
- 2008: Received "European Entrepreneurial Company 2008" from FROST & SULLIVAN
- 2008: Received "Flagship Company" in the Medical Equipment Industry in China
- 2009: Received "Product Quality Leadership Award 2009" from FROST & SULLIVAN in London, UK
- 2011: Received the Reddot Product Design Award for S20 in Essen, Germany



ISO 13485



CE

SonoScape

Yizhe Building, Yuquan Road, Shenzhen, 518051, China
Tel: 86-755-26722890 Fax: 86-755-26722850
E-mail: market@sonoscape.net www.sonoscape.com

S2V

Compassionate Animal
Ultrasound Care

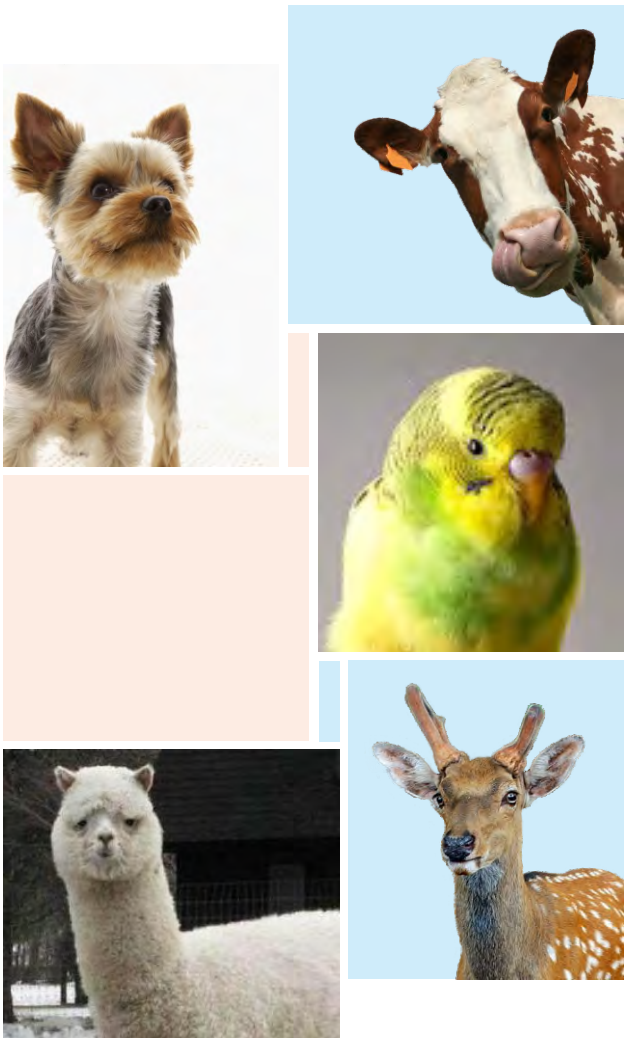


SonoScape
Caring for Life through Innovation

More in Less

S2V Portable Color Veterinary Ultrasound System

As the newest basic level portable color veterinary ultrasound system from SonoScape, S2V is designed to be the most cost-efficient and smartest digital system with optimal coverage in all fields of veterinary ultrasound diagnosis. Based on a brand-new software platform, integrated with wide range of dedicated veterinary special purpose transducers and supported by a lot of superior imaging technologies typically available in the very high-end cart-based systems, the S2V is endowed with the best package of functions in its class and takes on to fulfill various veterinary requirements of clinical diagnosis.



Seeing is Believing

The S2V is built on a new platform and architecture in a small, compact design that is ideal for taking excellent performance no matter in the consult room or on an equine yard. Our genius engineer designed it to be a very lightweight but powerful architecture, assuring it will be available anytime and anywhere. Besides, the innovative and user-friendly ergonomic design of the system enables the veterinarians to work with minimal physical and mental fatigue during diagnosis.



- 15 inch anti-glare LCD display
- Large clinical imaging area
- Two universal transducer sockets for quick transducers switch
- Abundant peripherals for efficient data management
- Intuitive anti-dust and anti-splash operation panel with standard PC keyboard
- Battery powered in support of continuous scanning more than one hour

Capable of Various Functions

Configured with advanced imaging techniques previously restricted to cart-based systems, S2V delivers high value in every specialty area of animal ultrasound diagnosis.

Various Diagnostic Applications

Optimized for a wide range of animal clinical applications: abdominal, reproductive, cardiac, tendinous, thoracic, small parts exams for large or small animals, including feline, canine, equine, bovine, ovine and suidae.



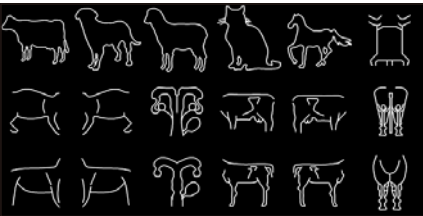
Portable yet Fully Featured

- Tissue Harmonic Imaging
- Micro-scan Speckle Reduction
- Spatial Compound Imaging
- Panoramic Imaging
- Trapezoidal Imaging
- Anatomic M Mode
- DPI Mode
- Pulse Wave Doppler
- Continuous Wave Doppler

Professional Veterinary Software Package

To meet the growing needs of today's veterinarians, the S2V is equipped with a dedicated veterinary fully configured software package.

- User-definable graphic exam modes applicable for small and large animals
- Specialized veterinary body marks and annotations
- Powerful veterinary measurement and calculation software package: early pregnancy diagnosis, cardiac diagnosis, general abdominal diagnosis, reproductive evaluation
- Professional veterinary high density linear array for endocavity reproductive and superficial application
- Phased array and micro-convex transducers for abdominal and cardiac application



Optimum Workflow

The S2V adapts to your workflow, whether you are in the consult room , at the bedside, or at a remote location. With easy-to-use new platform designed for sonographers' needs, S2V empowers veterinarians to work in their own style and habits and enjoy significantly improved ultrasound scan experience.



Intuitive user interface

Clear system layout designed for convenient workflow

Fully customized working setting

Multiple predefined and user configurable presets, function keys, formulae, measurements, report layout for each clinical specialties for simple operation

M-tuning function

Single button image optimization for 2D and Doppler to minimize key strokes and save time

Clip-board function

Convenient image review during scanning

Smart patient file management

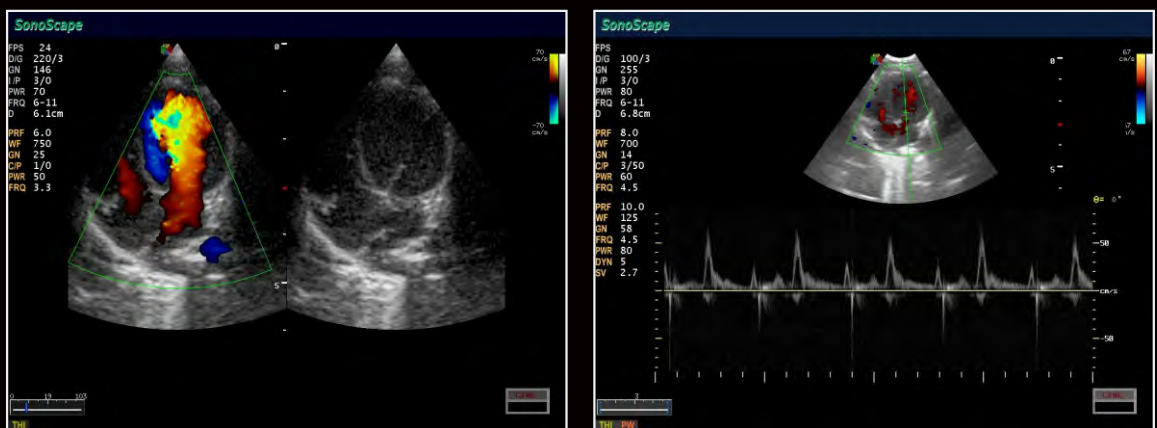
Easy to save, retrieve and review patient data and images at any time

Full data solutions

320G Hard drive, Complete DICOM 3.0, Dual USB port, VGA, S-Video, LAN port, video printer, USB laser/jet printer.....

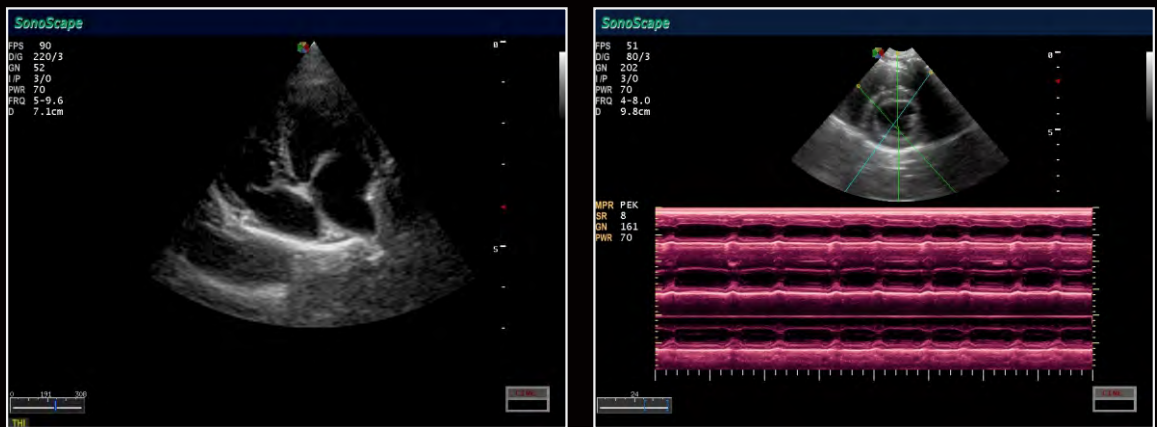


Superior Imaging Quality



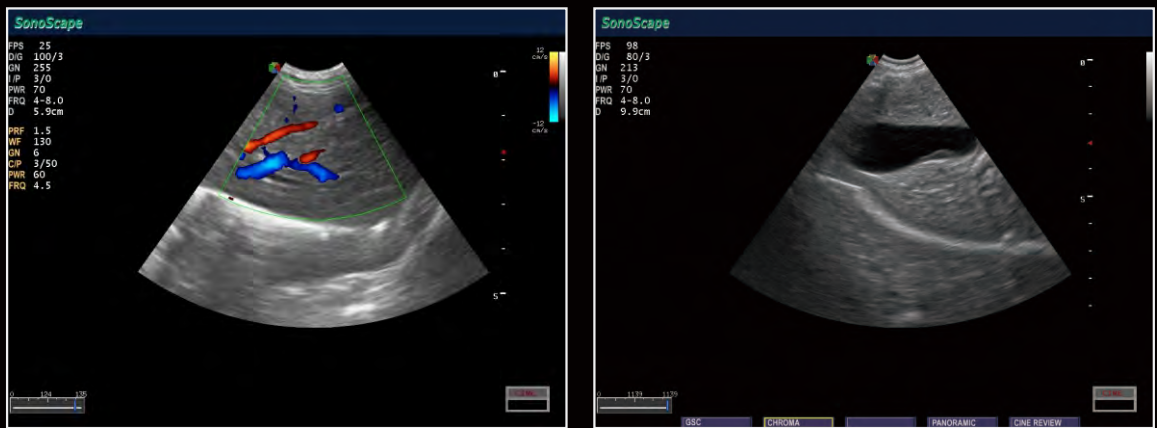
Feline Heart

Feline MV



Canine Four Chamber

Canine Steer M



Feline Liver

Canine Gallbladder

True Portability

In order to allow for easy portability, S2V can be mounted on a well-designed trolley to be used as a stationary ultrasound with space for peripherals such as printers or video recorders. Moreover, the system is the ideal solution for multiple-site support. With its convenient travel roller suitcase, the veterinarians can easily take the S2V to distant location. Hence, S2V is suitable for use in a wide range of veterinary practice environments.

