

Wire Pulling Accessories

Polypropylene Rope (Yellow)

1. Diameter is approximate and is actually determined by linear density. (Pounds per 100')
2. Linear Density is considered average weight per 100'. Tolerances: 3/16"-5/16" diameters inclusive $\pm 10\%$; 3/8" - 9/16" inclusive $\pm 8\%$ and 5/8" and up $\pm 5\%$. (+ plus, - minus.)
3. New rope Minimum Breaking Strength is based on data from a number of manufacturers and represents a value of 3 standard deviations below the mean, established by regression analysis.
4. For critical applications, where life or limb or Dynamic Loading is present, the higher ratio division.
Example; 10,000 pounds / 12 = 833 pounds working load ratio.



Approx. Dia. (1)	Length	Linear Density (2)	Minimum Breaking Force (3)	Working Load Ratio (4)	Item No.
(in)	(ft)	Approx. LBS Per 100'	(lbs)	Range Ratio	
1/8	3,000	.333	300	5-12 to 1	ROPE0183000
3/16	3,000	0.65	650	5-12 to 1	ROPE3163000
3/16	3,600	0.65	650	5-12 to 1	ROPE3163600
3/16	5,000	0.65	650	5-12 to 1	ROPE3165000
3/16	6,000	0.65	650	5-12 to 1	ROPE3166000
1/4	2,000	1.15	1,125	5-12 to 1	ROPE0252000
1/4	2,400	1.15	1,125	5-12 to 1	ROPE0252400
1/4	3,000	1.15	1,125	5-12 to 1	ROPE0253000
1/4	4,000	1.15	1,125	5-12 to 1	ROPE0254000
1/4	5,000	1.15	1,125	5-12 to 1	ROPE0255000
1/4	6,500	1.15	1,125	5-12 to 1	ROPE0256500
5/16	1,200	1.80	1,710	5-12 to 1	ROPE5161200
3/8	1,200	2.60	2,430	5-12 to 1	ROPE0381200
3/8	2,000	2.60	2,430	5-12 to 1	ROPE0382000
3/8	2,500	2.60	2,430	5-12 to 1	ROPE0382500
3/8	3,000	2.60	2,430	5-12 to 1	ROPE0383000
3/8	3,600	2.60	2,430	5-12 to 1	ROPE0383600
3/8	5,000	2.60	2,430	5-12 to 1	ROPE0385000
1/2	1,200	4.60	3,780	5-12 to 1	ROPE0501200
1/2	3,000	4.60	3,780	5-12 to 1	ROPE0503000
3/4	1,800	10.4	7,650	5-12 to 1	ROPE0751800



Continental Western Corporation

Wire Pulling Accessories

Conduit Blow Line Jetline



- Strong monofilament polypropylene blow twine
- Ties easily and holds a knot well
- Used as blow line and cable tying twine

Feet	Approximate Tensile lbs.	Color	Quantity	Item No.
6,500	210	White/Blue	Boxed	ROPEJETLINE
6,500	210	White/Blue	Bucket	ROPEJETLINEB



Continental Western Corporation

Wire Pulling Accessories



Pull Tape

Polyester MULETAPE® offers the following benefits:

- Provides a lower coefficient of friction than competitive tapes due to:
 - Special Pre-lubrication
 - Low friction, high abrasion resistant yarns
- Available with accurate sequential footage or meter markings
- Furnished in convenient reel lengths up to 100,000 feet or 31 km
- Packaged on sturdy wooden reels
- Provides a much softer feel than stiff coated competitive tapes for easier and more comfortable handling by linemen.



Strength (lbs. /kg)	Typical Bowline Strength (lbs. /kg)	Typical Knot Strength (lbs. /kg)	Reel Length (ft)	Approx. Width	Item No.
1250/568	760/345	900/409	3,000	1/2"	ROPEMT30001250
1250/568	760/345	900/409	10,000	1/2"	ROPEMT100001250
1800/818	830/377	1400/636	3,000	5/8"	ROPEMT30001800
1800/818	830/377	1400/636	5,000	5/8"	ROPEMT50001800
1800/818	830/377	1400/636	10,000	5/8"	ROPEMT100001800
2500/1136	1300/591	1800/818	3000	3/4"	ROPEMT30002500

Other lengths and strengths available upon request. Polyester MULETAPE® is also available unprinted. Please contact your SAF-T-CO Supply representative for details.



Wire Pulling Accessories

Missiles and Projectiles

LINE MISSILES

Fast and efficient plastic missiles for fishing with high-speed blowers even in out-of-round duct. Missile will travel over minor obstructions in duct. Part Duct Size Max O.D.



Duct Size		Max O.D.		Item No.
(in)	(mm)	(in)	(mm)	
2	51	2.06	52	HDW200MISSILE
3	76	3.06	78	HDW300MISSILE
3 ^{1/2}	89	3.56	90	HDW350MISSILE
4	102	4.06	103	HDW400MISSILE
5	127	5.06	129	HDW500MISSILE
6	152	6.06	154	HDW600MISSILE

INFLATABLE MISSILES



Rip-stop nylon bag conforms to cable-occupied ducts. One missile can be used in a variety of duct sizes. Easy pull-back.

Duct Size		Item No.
(in)	(mm)	
3/4 - 1 ^{1/4}	19 - 32	HDW075125IM
1 ^{1/2} - 2 ^{1/2}	38 - 64	HDW150250IM
3 - 4	76 - 102	HDW300400IM
4 - 6	102 - 152	HDW400600IM

Wire Pulling Accessories

Missiles and Projectiles

DUCT PROJECTILE

Flexible rubber cones are durable for many repeated uses. Fast and efficient for long runs with easy pull-back



Duct Size		Max O.D.		Item No.
(in)	(mm)	(in)	(mm)	
2	50	2.00	56	HDW200PROJ
2 ^{1/4}	56	2.20	50	HDW225PROJ
2 ^{1/2}	64	2.50	64	HDW250PROJ
3	76	3.00	76	HDW300PROJ
3 ^{1/2}	89	3.50	89	HDW350PROJ
4	102	4.00	102	HDW400PROJ
4 ^{1/4}	108	4.25	108	HDW425PROJ
4 ^{1/2}	115	4.51	115	HDW450PROJ
5	127	5.00	127	HDW500PROJ
6	152	6.00	152	HDW600PROJ

Wire Pulling Accessories

Pulling Lube

Polywater® Cable Placing Lubricant

Dyna-Blue®

Heavy Duty Cable Pulling Lubricant

FEATURES

- Clean-Easy to Use
- Temperature Stable-No Waste
- Stays Slippery-Won't Dry Out
- Safe-Use With All Cables
- Lower Cost
- UL and CSA Listed



Dyna-Blue® lubricant is harmless to humans, environmentally safe, compatible with cable jacket materials and exceptionally easy to work with.

Polywater® Lubricant F

Fiber Optic Cable Lubricant

FEATURES

- Easy to pour into innerducts and feeder tubes
- Superior friction reduction for lower tension pulls
- Compatible with cable jackets, including PE types
- Wets out and covers PE jackets to thoroughly lubricate long pulls
- Slow drying with lubricious residue for lasting lubrication



Polywater F® lubricant is a pourable liquid lubricant recommended for long, difficult, light cable pulls.

Wire Pulling Accessories

Polywater® Cable Placing Lubricant

Polywater® Lubricant J

High Performance Wire & Cable Pulling Lubricant
for Heavy Cable Installations

FEATURES

- Maximum friction reduction
- Clean and non-staining
- Compatible with all cables
- UL and CSA listed
- Non-combustible residue
- High cling factor

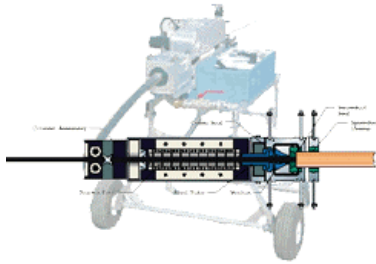


Polywater J® lubricant is a specification-grade lubricant that does not promote flame propagation when used with fire-retardant cable systems.

Size	% Non-volatile Solids	Appearance	Temperature Range	Cleanup	Item No.
Dyna-Blue					
5-Gallon Pail	2.5 to 3.5%	Thick, light-blue gel material	20°F to 140°F (-5°C to 60°C)	Complete cleanup possible with water	HDWD640
1-Gallon Pail					HDWD128
1-Quart Bottle					HDWD035
Polywater® Lubricant F					
5-Gallon Pail	4.5 TO 5.5%	Transparent to slightly opaque, orange-colored, stringy liquid material	20°F to 110°F (-5°C to 45°C)	Complete cleanup possible with water	HDWF640
2-1/2 Gallon Jug					HDWF320
1-Gal Pail					HDWF128
1-Quart Bottle					HDWF035
Polywater® Lubricant J					
5-Gallon Pail	3.5 to 5.5%	Thick, cream colored gel material	20°F to 120°F (-5°C to 50°C)	Complete cleanup possible with water	HDWJ640
1-Gal Pail					HDWJ128
1-Quart Bottle					HDWJ035

Wire Pulling Accessories

Fiber Optic Cable Blowers



- Install 300 feet of fiber optic cable per minute (90m/min) with a fiber optic cable blower.
- A missile is always attached to the front of the cable.
- Compressed air propels the missile and cable through the air-tight sealed duct in a matter of seconds.



Hydraulic System Requirements	Hydraulic Operating Pressure	1500 psi (103 bar) maximum
	Hydraulic Flow	<ul style="list-style-type: none"> • 8 gpm (30 lpm) maximum
	Hydraulic Circuit Type	Open Center
Air Compressor Requirements	Pneumatic Flow Capacity	135 psi (9.3 bar) maximum
	Required Flow Capacity	<ul style="list-style-type: none"> • 175 scfm (5 m³/min) minimum • 375 scfm (11 m³/min) maximum
Operational Capacities	Pushing Force	150 lbs (667 N) maximum
	Pushing Speed	300 ft/min (91 m/min) maximum
	Cable Sizes	3/8" to 1 1/4" (10 mm to 32 mm)
	Standard Duct Sizes (other sizes available)	<ul style="list-style-type: none"> • 1, 1 1/4, 1 1/2, and 2", SDR 11 and 13.5 • (25, 32, 38 and 51 mm, SDR 11 and 13.5)
	Typical Installation Distances	4000 - 12,000 ft (1200 - 3700m)
Distance and Speed Displays (Blower Packages 1, 2, 3, 4)	External Power Requirements	No external power required
	Display Unit	Digital LCD Display
Electronic Control System (Blower Packages 5, 6, 7, 8)	External Power Requirements	12 volts DC
	Automatic Shutdowns	At programmed minimum and maximum speed
	Display Unit	Digital LCD Display
Physical Specifications (Blower Packages 2, 4, 6, 8)	Height 42"	(107 cm)
	Length 39"	(99 cm)
	Width 39"	(99 cm)
	Weight 178 lbs.	(80 kg)

Wire Pulling Accessories

The **Power Dart® Blower** is a pneumatic rodding system especially suited for long duct runs. A three-motor system allows you to choose the right speed for your needs.

- With all three motors engaged, the Power Dart Blower will deliver up to 300 cfm (8.5 m³/min) of air or 3 psi (.2 bar) max. pressure, easily blowing 1/2" (13 mm) poly line or measuring tape over 2,000 feet (610 m) in conduit up to 6 inches (152 mm) in diameter.
- The complete kit comes with 25 feet (7.6 m) of air hose, an assortment of conduit seal-offs, and an assortment of missiles.
- Weighs only 31 pounds (14 kg) and operates at 110 or 220 Volts.
- 110 Volt model includes a 30 amp twist plug.
- The 220 Volt model is supplied without a plug. Requires a 3,000 Watt generator.



FIBER OPTIC CABLE PULLERS

The CONDUX fiber optic cable pullers consist of a 30" diameter capstan, hydraulic motor, variable speed foot control, manual flow control valve for adjusting maximum speed and a manually adjustable pressure relief valve for adjusting the ultimate pull tension. A footage counter is also included. Optional features are also available.

Ask your Saf-T-Co Supply representative for product literature.



SPECIFICATIONS

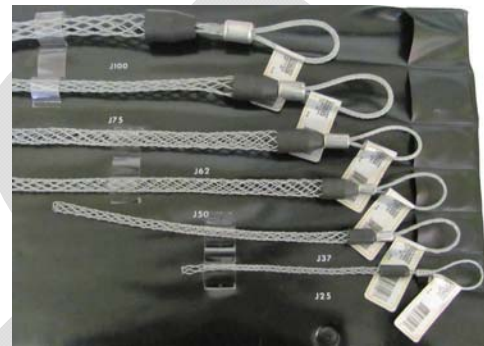
	12 in (305 mm) Diameter Capstan		30 in (762 mm) Diameter Capstan		50 in (1270 mm) Diameter Capstan	
	lbs	kN	lbs	kN	lbs	kN
Pulling Force						
Maximum	2,000	8.9	1,000	4.4	600	2.7
Continuous	2,000	8.9	1,000	4.4	600	2.7
Pulling Speed	ft/min	m/min	ft/min	m/min	ft/min	m/min
No Load	93.9	28.6	240.0	73.2	391.4	119.3
At Maximum Force	93.9	28.6	240.0	73.2	391.4	119.3
POWER REQUIREMENTS						
Pressure	2,000 to 2,500 psi (137 to 172 bar)					
Flow	6 to 10 gpm (22.7 to 37.9 lpm)					
Peak Power	8 HP (5.97 kw)					

Wire Pulling Accessories

Pulling Grips

Junior Grip Kit

Junior Pulling Grips feature a strong galvanized steel, single weave mesh. A flexible eye easily attaches to a pulling line, snake or fish tape. Junior Grips are safe tools to use in pulling wire at a low tension through conduit during electrical construction.



Cable Diameter	Approximate Breaking Strength (lbs.)	Eye Length (in.)	Mesh Length at Nominal Diameter (in.)	Item No.
.25 - .36	450	3 ^{1/4}	4 ^{1/4}	CNX08643200
.37 - .49	900	3 ^{3/4}	7	CNX08643200
.50 - .61	1,300	4 ^{1/4}	8 ^{1/2}	CNX08643200
.62 - .74	1,950	5	10	CNX08643200
.75 - .99	2,800	5 ^{3/4}	10	CNX08643200
1.00 - 1.24	3,900	6 ^{1/2}	11 ^{1/2}	CNX08643200



Wire Pulling Accessories

PE & PVC Pulling Eyes



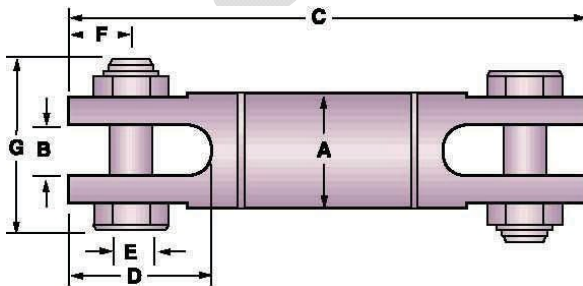
Condux PE & PVC Pulling Eyes feature an extremely rigid center rod to prevent bending and a steel tapered lead cone with the same OD as the conduit. This design feature protects the outer leading edge of the conduit. They also feature split gripping segments with aggressive gripping threads coupled with a steel expander plug that better grips the full range of conduit I.D.'s.



Nominal Size	Duct I.D. Range		Length inches	Item No.
	inches	mm		
2"	1.88 - 2.15	48 - 55	8.18	CNX08220020
3"	2.69 - 3.13	68 - 79	11.89	CNX08220030
4"	3.50 - 4.06	89 - 103	14.11	CNX08220040
5"	4.25 - 5.06	108 - 129	18.45	CNX08220050

Directional Drilling Swivels

Working Load (lbs)		A (in)	B (in)	C (in)	D (in)	E (in)	F (in)	G (in)	Item No.
Tension	Compression								
8,500	2,800	1 ^{5/8}	.63	6.85	1.59	.56	.78	2.36	CNX08190016
10,000	3,300	2	.75	7.83	1.81	.63	.75	2.89	CNX08190020
20,000	6,600	2 ^{1/2}	1.00	10.93	2.84	.88	1.25	3.67	CNX08190025
30,000	10,000	3	1.31	12.75	3.56	1.13	1.37	4.50	CNX08190030
45,000	15,000	4	1.63	15.25	4.00	1.25	1.84	5.58	CNX08190040
60,000	20,000	4 ^{5/8}	1.75	17.48	4.62	1.50	2.13	6.31	CNX08190045
90,000	30,000	6	2.00	18.27	4.50	1.75	2.18	6.59	CNX08190060
120,000	40,000	8	2.25	21.71	5.25	2.00	2.50	8.25	CNX08190080



Other Swivels and Pulling Eyes available. Contact your Saf-T-Co Supply representative for details.



Wire Pulling Accessories

DUCT RODDERS



Condux duct rodders combine ease of operation and reliable performance to help increase the efficiency of your rodding operations.

Condux duct rodder cages have been designed to be lighter weight for easy handling in the field. They feature sturdy construction and a hand-operated wheel brake. They can be used on their side as well as upright. 30" (762 mm) and 45" (1,143 mm) cages come with flotation wheels for added mobility. Cage sizes are matched to suit the rod you order.

3 Types of Rod

COBRA®: Cobra is Condux's highest quality rod, designed for heavy-duty applications. It gets its extra strength from a unique construction process that ensures greater rigidity and strength, enabling it to endure the additional force required for long duct runs with multiple bends and sweeps. A braided wrap reinforcing fibers increases its rigidity and helps bond the core with the outer plastic coating. The coating is made from a polymer blend for greater toughness and superior abrasion resistance to ensure extra long life. Includes on male and one female end fitting, and a tapered head.

PYTHON®: Condux's Python rod is best suited for less demanding applications. It has strength properties similar to the Cobra rod, but is more flexible. Also, like the Cobra, it has a heavy-duty outer plastic coating to resist abrasions and reduce wear. Includes on male and one female end fitting, and a tapered head.

MINI-COBRA®: The Mini-Cobra rod includes the 3/16" (5mm) and 1/4" (6mm) diameter rods used primarily for smaller duct sizes and shorter runs. The rods have the same flexibility and strength features of the Python rod and come wound in 16" (406mm) and 24" (610mm) cages in 50' (25m) to 600' (200m) lengths. Includes two male end fittings and two tapered heads.

Conduit Sizes in (mm)	Recommended Duct Rod Size in (mm)
1/2 (13)	3/16 (5)
3/4 (19)	3/16 (5)
1 (25)	3/16, 1/4 (5, 6)
1 1/4 (32)	3/16, 1/4 (5, 6)
1 1/2 (38)	1/4, 5/16 (6, 8)
2 (51)	1/4, 5/16 (6, 8)
2 1/2 (64)	1/4, 5/16 (6, 8)
3 (76)	5/16, 7/16, 9/16 (8, 11, 13)
3 1/2 (89)	5/16, 7/16, 9/16 (8, 11, 13)
4 (102)	5/16, 7/16, 9/16 (8, 11, 13)
5 (127)	7/16, 9/16 (11, 13)
6 (152)	7/16, 9/16 (11, 13)
8 (203)	9/16 (13)



Wire Pulling Accessories

Aluminum Mandrels

Aluminum mandrels are designed to verify the integrity of installed conduit and may also be used to remove small amounts of debris.



Conduit Type	Conduit Size	O.D. Inches	Length Inches	Shipping Weight LBS	Item No.
DB / Schedule 40	1"	.7500	6	2	HDW100DBMAN
	1 1/4"	.9375	6	2	HDW125DBMAN
	2"	1.750	6	2	HDW200DBMAN
	2 1/2"	2.250	6	2	HDW250DBMAN
	3"	2.750	6	2	HDW300DBMAN
	3 1/2"	3.250	6	2	HDW350DBMAN
	4"	3.750	6	3	HDW400DBMAN
	5"	4.750	6	3	HDW500DBMAN
Schedule 80	6"	5.750	6	4	HDW600DBMAN
	2"	1.50	6	2	HDW20080MAN
	3"	2.375	6	2	HDW30080MAN
	4"	3.400	6	3	HDW40080MAN
	5"	4.400	6	3	HDW50080MAN
	6"	5.263	6	4	HDW60080MAN

Aluminum mandrels for Telephone duct, and flexible mandrels also available

Wire Pulling Accessories



Wire Brush Mandrels

Wire Brush mandrels are designed to remove sand, grit and other light obstructions from the duct.



Duct Size		Body Length		Max O.D.		Item No.
(in)	(mm)	(in)	(mm)	(in)	(mm)	
1 ^{1/4}	32	4.25	108	1.00	25	CNX08028904
1 ^{1/2}	38	4.25	108	1.25	32	CNX08028905
2	51	4.25	108	1.75	44	HDW200WBM
2 ^{1/2}	64	4.25	108	2.25	57	CNX08046000
3	76	5.50	140	2.75	70	HDW300WMB
3 ^{1/2}	89	5.00	127	3.25	82	CNX08067200
4	102	6.75	171	3.75	95	HDW400WBM
5	127	6.50	165	4.75	121	HDW500WBM
6	152	6.75	171	5.75	146	HDW600WBM

Heavy Duty Wire Brush Mandrels

Duct Size		Body Length		Max O.D.		Item No.
(in)	(mm)	(in)	(mm)	(in)	(mm)	
2	51	3.50	89	1.75	44	CNX08029104
2 ^{1/2}	64	4.25	108	2.25	57	CNX08046001
3	76	5.25	140	2.75	70	CNX08067101
3 ^{1/2}	89	5.25	127	3.25	82	CNX08067201
4	102	5.25	171	3.75	95	CNX08029001
5	127	5.00	165	4.75	121	CNX08029101
6	152	5.00	171	5.75	146	CNX08029105

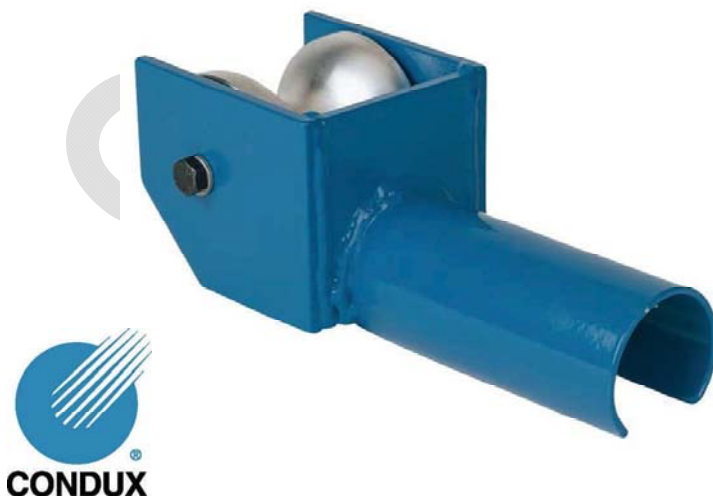
Aluminum mandrels for Telephone duct, and flexible mandrels also available

Wire Pulling Accessories

CABLE FEEDING SHEAVES

Plugs into conduit in manhole wall, guiding cable safely into the conduit regardless of the pulling angle. Replacement Sheaves available.

Size		A		I.D.		O.D.		Load Capacity		Item No.
(in)	(mm)	(in)	(mm)	(in)	(mm)	(in)	(mm)	(lbs)	(N)	
1 ^{1/2}	38	1.04	26	1.25	32	1.44	37	1,500	6,672	CNX08617215
2	51	1.38	35	1.75	44	1.95	50	2,600	11,565	CNX08617220
2 ^{1/2}	63	1.44	37	2.16	55	2.40	61	2,600	11,565	CNX08617225
3	76	2.25	57	2.62	67	2.95	75	4,800	21,350	CNX08617230
3 ^{1/2}	89	2.75	70	3.00	76	3.38	86	4,800	21,350	CNX08617235
4	102	3.00	76	3.50	89	3.95	100	6,500	28,912	CNX08617200
4	102	3.00	76	3.25	83	3.65	93	6,500	28,912	CNX08617340
5	127	3.75	95	4.50	114	4.90	125	6,500	28,912	CNX08617250
6	114	4.50	114	5.37	136	5.90	150	6,500	28,912	CNX08617260
6	114	4.50	114	5.00	127	5.56	141	6,500	28,912	CNX08617360
8	203	6.00	152	7.18	182	7.94	202	6,500	28,912	CNX08617280



Other cable guides available. Ask your Saf-T-Co Supply representative for details.