

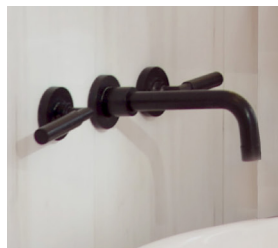


JACLO®

NEW PRODUCTS

IN NOV 13 2021 DIGITAL CATALOG
+ FREESTANDING TUBS

*Confidence
from start
to finish*



JACLO®

Confidence from start to finish.*

JACLO is your one source manufacturer with a full range of faucets, shower systems, accessories, grab bars, channel drains, decorative specialties®, and the list goes on.

Our list of 78,000+ SKUs are consisting of 35+ finish options that JACLO's American craftsmen have designed to complement every design style. While we are constantly developing new aesthetics and tones, our finishes also blend with most manufacturers' offerings. If you are looking to design your dream bathroom, update a few fixtures to match your current look, or design a large scale hotel, JACLO has the product for you.

JACLO products are finished in New Jersey using some of the most sophisticated processes available. Our state of the art techniques allow us to create unique products that not only meet industry standards, but exceed your design expectations.

FINISHES

Chrome



Polished Chrome
PCH

NOT ALL FINISHES ARE AVAILABLE ON EVERY PRODUCT. CHECK INDIVIDUAL PRODUCT LISTING FOR FINISH AVAILABILITY. FOR FURTHER INFORMATION VISIT JACLO.COM

Group A



Satin Nickel
SN



Polished Nickel
PN



*Unlacquered Brass
ULB

Group B



Matte Black
MBK



Oil-Rubbed Bronze
ORB



Polished Brass
PB



Satin Chrome
SC



Vintage Bronze
VB



White
WH

Group C



Antique Brass
AB



Antique Copper
ACU



*Aged Unlacquered
Brass
AUB



Bronze UMBER
BU



Caramel Bronze
CB



Graphite
GPH



Pewter
PEW



Satin Brass
SB



Satin Copper
SCU

JACLO=COLOR Group C



Almond
ALD



Amber
AMB



Azure Blue
AZB



Coral
COR



Mint Green
GRN



Stone Gray
GRY



Lilac
LAC



Light Blue
LBL



Limon
LIM



Plum
PLM



Pink
PNK



Red
RED

Group D



Black Nickel
BKN



Polished Copper
PCU



Polished Gold
PG



Satin Gold
SG

*ULB and AUB are living finishes

JACLO finishes chart shown for reference only. Finish samples available upon request.

Additional Finishes



Polished Stainless
Steel
PSS



Brushed Stainless
Steel
BSS

Brushed Stainless Steel (BSS) and Polished Stainless Steel (PSS) are available finishes on specific product offerings.

NEW PRODUCTS

IN NOVEMBER 13, 2021 DIGITAL CATALOG

JACLO®

Confidence from start to finish.™

CONTEMPO SINGLE HOLE SENSOR FAUCET



ITEM	PCH	GRP A	GRP B	GRP C	GRP D
884-ESF-	\$750	\$895	\$1,025	\$1,150	\$1,285

- Contempo lavatory single hole sensor faucet
- 0.5 GPM
- 30 second on/off run time-shutoff
- **Spout reach:** 4 1/4", **Spout height:** 4 1/2"
- Drain sold separately
- All brass stationary spout
- ADA Compliant
- Includes control module, batteries, and AC power adapter
- Battery life 500,000 cycles, also has a low battery indicator
- Requires a separate mixing valve (JACLO's mixing valve: J-TP603)
- For renovations & conversions: Add a 8-CPLATE to 8" widespread faucet or 4-CPLATE for centerset to replace it with a sensor faucet

MIXING VALVE



ITEM	ROUGH
J-TP603	\$295

- Mixing Valve to be used with Sensor Faucet
- Controls and regulates faucet water temperature
- Minimum flow rate: 0.5 GPM
- Pressure loss at minimum flow rate: 0.5 PSI
- Hot water inlet temperature range: 120-180°F (48.8-82.2°C)
- Cold water inlet temperature range: 39-84°F (3.9-28.8°C)
- Outlet temperature range: 80-120°F (26.7-48.8°C)
- Outlet temperature factory settings: 100.4°F (38°C)
- Inlet/Outlet Spec: 1/2" NPS threaded male fittings

CONTEMPO SINGLE HOLE SENSOR SOAP & HAND SANITIZER DISPENSER



ITEM	PCH	GRP A	GRP B	GRP C	GRP D
984-ESSD-	\$525	\$675	\$795	\$895	\$995

- Contempo lavatory single hole sensor soap dispenser
- Can be used as hand sanitizer dispenser
- **Spout reach:** 4 3/16", **Spout height:** 2 15/16"
- Infrared sensor
- Use with liquid sanitizer or liquid soap
- Big soap bottle capacity (1000mL)
- ADA compliant
- Includes control module and AC power adapter. Batteries not included
- Battery life 40,000 cycles
- Fast filling function with one press button
- For renovations & conversions: Add a 8-CPLATE to 8" widespread faucet or 4-CPLATE for centerset to replace it with a sensor faucet

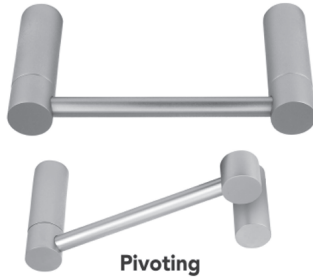
NEW PRODUCTS

IN NOVEMBER 13, 2021 DIGITAL CATALOG

JACLO®

Confidence from start to finish.*

PIVOTING TOILET PAPER HOLDER



ITEM	SPECIFICS	PCH	GRP A	GRP B	GRP C	GRP D
3501-TPPIV-	Pivot	\$145	\$195	\$245	\$275	\$315

- All brass pivoting toilet paper holder
- Universal mounting hardware included
- 3 3/8" projection
- Blocking Required
- Fits standard paper rolls

ROUND PLATE WITH CONTEMPO ROUND LEVER TRIM FOR PRESSURE BALANCE CYCLING VALVE (J-COM-CSV)



ITEM	SPECIFICS	PCH	GRP A	GRP B	GRP C	GRP D
B426-TRIM-	4 5/16" Diameter	\$265	\$325	\$395	\$445	\$485

- All brass construction
- Rotating the handle counter clockwise turns on the water & controls the water temperature
- **Requires rough valve J-COM-CSV**
- Lever trim is ADA compliant
- Trim plate 4 5/16"

COMPACT PRESSURE BALANCE CYCLING VALVE



ITEM	ROUGH
J-COM-CSV	\$235

- All brass body
- Pressure balance valve mixes hot & cold water
- Anti-scald protection
- Rotating the handle counter clockwise turns on the water & controls the water temperature
- Ceramic cartridge
- 1/2" NPT male ports
- 4.75 GPM flow @ 60 PSI
- Extension kit available for deep wall installations, J-CSV-EXT- designate finish
- Ideal for Bidet Handshowers
- **Requires B426-TRIM-**

NEW PRODUCTS

IN NOVEMBER 13, 2021 DIGITAL CATALOG

JACLO®

Confidence from start to finish.*

CONTEMPO WALL TUB FILLER TRIM



ITEM	SPECIFICS	PCH	GRP A	GRP B	GRP C	GRP D
8230-T-WT462-TR-	Cross Handles	\$645	\$850	\$1,015	\$1,050	\$1,150
8230-T-WT459-TR-	Lever Handles	\$645	\$850	\$1,015	\$1,050	\$1,150

- Wall Mounted Stationary Tub Spout
- All brass construction
- 1/4 turn ceramic valves
- Stationary wall mounted spout
- **Requires rough kit 5550-RGH**

ROUGH FOR CONTEMPO WALL TUB FILLER TRIM



ITEM	ROUGH
5550-RGH	\$295

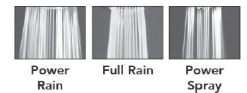
- Required Rough for Contempo Wall Tub Filler Trim
- 1/2" NPT Hot inlet, 1/2" NPT Cold inlet
- 8 1/16" center to center
- Allows up to 13 GPM

KIERA SHOWERHEAD WITH POWER SPRAY



ITEM	SPECIFICS	PCH	GRP A	GRP B	GRP C	GRP D
S182-	4" Face	\$185	\$265	\$355	\$425	\$490

- 3 function showerhead with 4" face
- 1/2" IPS adjustable brass ball joint to adjust angle of showerhead
- Available flow rates: 2.5, 2.0, 1.75 & 1.5 GPM
- Not available in AUB, ULB, WH, JACLO=COLOR

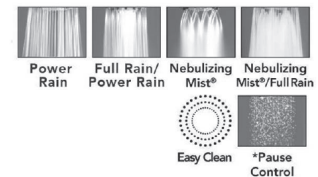


SONIA SHOWERALL®



ITEM	SPECIFICS	PCH	GRP A	GRP B	GRP C	GRP D
S167-	4 3/4" Face	\$98	\$145	\$250	\$295	\$325

- 4 3/4" diameter 6 function showerhead with pause control to conserve water
- Pause control is not a positive shut-off
- Fully finished face
- 1/2" IPS adjustable brass ball joint to adjust angle of showerhead
- Available flow rates: 2.5, 2.0, 1.75 & 1.5 GPM
- Not available in WH & JACLO=COLOR
- **1.75 GPM - WaterSense approved**



NEW PRODUCTS

IN NOVEMBER 13, 2021 DIGITAL CATALOG



Confidence from start to finish.®

45° BRASS SHOWERARM WITH ESCUTCHEON



ITEM	SPECIFICS	PCH	GRP A	GRP B	GRP C	GRP D
8031-E4-	1/2" X 6"	\$28	\$53			
8032-E4-	1/2" X 8"	\$32	\$59			
8031-E6-	1/2" X 6"	\$52	\$77	\$121	\$142	\$163
8032-E6-	1/2" X 8"	\$56	\$83	\$130	\$159	\$182
8031-E15-	1/2" X 6"	\$62	\$87	\$129	\$152	\$173
8032-E15-	1/2" X 8"	\$66	\$93	\$138	\$169	\$192
8031-E7-	1/2" X 6"	\$62	\$87	\$137	\$157	\$176
8032-E7-	1/2" X 8"	\$66	\$93	\$146	\$174	\$195
8031-E17-	1/2" X 6"	\$80	\$107	\$174	\$203	\$228
8032-E17-	1/2" X 8"	\$84	\$113	\$183	\$220	\$247
8031-E80-	1/2" X 6"	\$32	\$56	\$108	\$127	\$143
8032-E80-	1/2" X 8"	\$36	\$62	\$117	\$144	\$162

- Brass 45° showerarms
- 1/2" Male IPS
- Other escutcheons styles and arm length options available. Contact JACLO

60° BRASS SHOWERARM WITH ESCUTCHEON



ITEM	SPECIFICS	PCH	GRP A	GRP B	GRP C	GRP D
8041-E4-	1/2" X 6"	\$45	\$76			
8043-E4-	1/2" X 8"	\$60	\$90			
8041-E6-	1/2" X 6"	\$69	\$100	\$151	\$179	\$210
8043-E6-	1/2" X 8"	\$84	\$114	\$192	\$224	\$265
8041-E15-	1/2" X 6"	\$79	\$110	\$159	\$189	\$220
8043-E15-	1/2" X 8"	\$94	\$124	\$200	\$234	\$275
8041-E7-	1/2" X 6"	\$79	\$110	\$167	\$194	\$223
8043-E7-	1/2" X 8"	\$94	\$124	\$208	\$239	\$278
8041-E17-	1/2" X 6"	\$97	\$130	\$204	\$240	\$275
8043-E17-	1/2" X 8"	\$112	\$144	\$245	\$285	\$330
8041-E80-	1/2" X 6"	\$49	\$79	\$138	\$164	\$190
8043-E80-	1/2" X 8"	\$64	\$93	\$179	\$209	\$245

- Brass 60° showerarms
- 1/2" Male IPS
- Other escutcheon styles and arm length options available. Contact JACLO
- Excellent for increasing angle of the showerhead

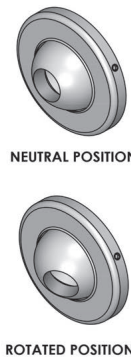
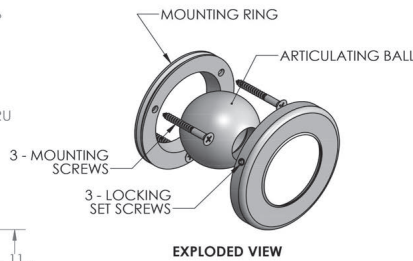
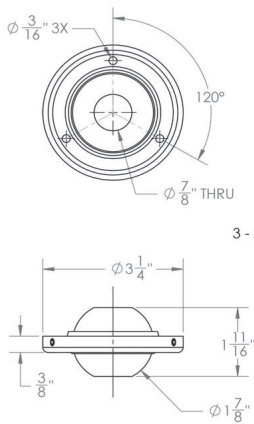
NEW PRODUCTS

IN NOVEMBER 13, 2021 DIGITAL CATALOG

JACLO®

Confidence from start to finish.™

ADJUSTABLE CEILING ESCUTCHEON



ITEM	PCH	GRP A	GRP B	GRP C	GRP D
6019-	\$250	\$345	\$485	\$585	\$650

- All brass construction
- Works for slope ceilings up to a 45 degree angle
- Works with standard 1/2" drop ceiling nipples
- **Patent # 11130145**

HEX ESCUTCHEON

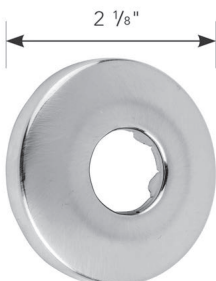


ITEM	SPECIFICS	PCH	GRP A	GRP B	GRP C	GRP D
6017-	2 3/4" Diameter	\$60	\$75	\$115	\$135	\$150

- 2 3/4" Diameter multi fit brass escutcheon
- Supplied with three O-rings to fit:
 - 1/2" IPS wall & ceiling drop nipples
 - 1/2" showerarms
 - Cover tubes 578- & 579-
 - 629- & 631- series valves
- Decorative design



ESCUTCHEON



ITEM	SPECIFICS	PCH	GRP A	GRP B	GRP C	GRP D
6080-	2 1/8" Diameter	\$12	\$24	\$49	\$59	\$65

- 2 1/8" Diameter brass escutcheon
- Fits:
 - 1/2" IPS showerarms
- Decorative design
- Sure Grip
- Previous Model #: 8040-ESC

NEW PRODUCTS

IN NOVEMBER 13, 2021 DIGITAL CATALOG

JACLO®

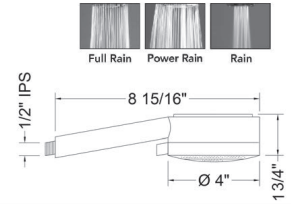
Confidence from start to finish.™

KIERA HANDSHOWER



ITEM	SPECIFICS	PCH	GRP A	GRP B	GRP C	GRP D
S482-	4" Face	\$195	\$295	\$385	\$425	\$475

- 3 function handshower with 4" face
- 1/2" IPS male threads
- Tab on adjusting ring allows for easy adjustment of functions
- Contemporary design
- Available flow rates: 2.5, 2.0, 1.75 & 1.5 GPM
- Not available in AUB, ULB, WH, JACLO=COLOR

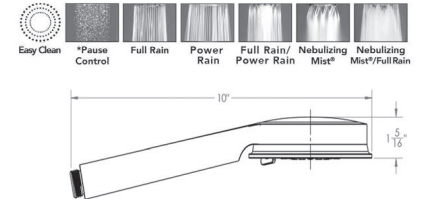


SONIA SHOWERALL® 6 FUNCTION



ITEM	SPECIFICS	PCH	GRP A	GRP B	GRP C	GRP D
S467-	4 3/4" Face	\$98	\$145	\$240	\$285	\$320

- 4 3/4" diameter 6 function handshower with pause control to conserve water
- Pause control is not a positive shut-off
- Fully finished face
- Available flow rates: 2.5, 2.0, 1.75 & 1.5 GPM
- Not available in AUB, ULB, WH, JACLO=COLOR
- **1.75 GPM—WaterSense approved**



MACAN BIDET



ITEM	SPECIFICS	PCH	GRP A	GRP B	GRP C	GRP D
B039-	1 5/16" Face	\$79	\$145	\$215	\$245	\$295

- Power spray bidet handshower with 1 5/16" face
- 1/2" Male threads
- Light weight ABS design
- Handheld On/off trigger operation
- Note:
 - Separate shut off valve required when installing this item
 - Water must be turned off when not in use
- Available Flow Rates: 2.5 & 2.0 GPM
- Not available in AUB, ULB, WH & JACLO=COLOR



MACAN BIDET HANDSHOWER KIT



ITEM	SPECIFICS	PCH	GRP A	GRP B	GRP C	GRP D
B039-646-	Complete Kit	\$428	\$738	\$1,017	\$1,205	\$1,390

- Power spray bidet kit with 1 5/16" face
- 1/2" Female inlet x 1/2" Male outlet
- Note:
 - Water must be turned off when not in use
 - Kit includes:
 - Bidet handshower P/N B039
 - Water supply elbow with on/off valve and swivel handshower holder P/N 6466
 - Hose P/N 3049-DS
 - Dual check valve back flow preventer P/N DBF
 - Not available in AUB, ULB, WH & JACLO=COLOR



NYLON REINFORCED HOSE



ITEM	WH	MBK
3060-NR-	\$72	\$72

- Nylon Reinforced vinyl handshower hose
- 1/2" Female threads
- Brass hex nut is on one end of the hose, and a plastic conical nut to hold the handshower is on the other end
- Attach handshower to conical end of hose
- Available in black and white only

NEW PRODUCTS

IN NOVEMBER 13, 2021 DIGITAL CATALOG

JACLO®

Confidence from start to finish.*

DELUXE LEVER DIVERTER

ALL BRASS

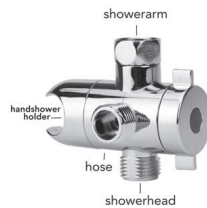


ITEM	PCH	GRP A	GRP B	GRP C	GRP D
2698-	\$52	\$69	\$95	\$120	\$160

- Brass lever showerarm handshower diverter
- 1/2" Female inlet swivel nut x two 1/2" Male outlets
- Use to divert water from showerhead to handshower
- Deluxe swivel nut for easy installation

LEVER DIVERTER WITH HANDSHOWER HOLDER

ABS



ITEM	PCH
2697-	\$44

- ABS plastic drop in showerarm handshower diverter
- Use to divert water from showerhead to handshower
- Deluxe swivel nut for easy installation Attach to existing showerarm to easily add a handshower Available in PCH only

HANDSHOWER ANGLE ADAPTER ELBOW

ALL BRASS



ITEM	PCH	GRP A	GRP B	GRP C	GRP D
8022-	\$36	\$45	\$75	\$85	\$95

- Brass handshower angle adapter elbow
- 1/2" female NPT to attach handshower & 1/2" male IPS for conical end of handshower hose
- Ideal for close ceiling installation
- **Excellent for increasing the angle of a handshower when desired**

STATIONARY WALL MOUNT

ALL BRASS

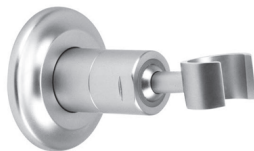


ITEM	PCH	GRP A	GRP B	GRP C	GRP D
8054-	\$62	\$89	\$120	\$150	\$185

- All Brass Stationary wall mount handshower holder
- Minimalistic design goes well with any styling
- Conical end of hose sits in holder
- Mounting screws & anchors included

TRANSITIONAL ADJUSTABLE WALL MOUNT

ALL BRASS

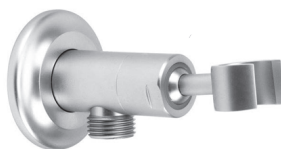


ITEM	PCH	GRP A	GRP B	GRP C	GRP D
8059-	\$95	\$125	\$165	\$215	\$285

- Brass adjustable angle wall mount handshower holder
- Ideal for use with any style handshower
- Conical end of hose sits in holder
- Mounting screws & anchors included
- Allows for easy adjustment of handshower to desired angle

WATER SUPPLY ELBOW WITH HANDSHOWER HOLDER

ALL BRASS



ITEM	PCH	GRP A	GRP B	GRP C	GRP D
6459-	\$105	\$140	\$175	\$215	\$285

- Brass water supply elbow with brass adjustable angle wall mount handshower holder
- 1/2" Female inlet x 1/2" Male outlet
- Conical end of hose sits in holder
- Ideal for use with any style handshower

NEW PRODUCTS

IN NOVEMBER 13, 2021 DIGITAL CATALOG

JACLO®

Confidence from start to finish.®

CONTEMPORARY SLIM WALL BAR

ALL BRASS



ITEM	PCH	GRP A	GRP B	GRP C	GRP D
9224-	\$195	\$295	\$395	\$435	\$495

- 35 1/2" Brass contemporary slim wall bar
- Adjustable handshower angle
- Lever Handle Slider easily moves up & down & side to side
- Conical end of hose sits in holder
- Mounting hardware included

NEW PRODUCTS

IN NOVEMBER 13, 2021 DIGITAL CATALOG



Confidence from start to finish.®

GRAB BAR WITH TRADITIONAL ROUND FLANGE



ITEM	SPECIFICS	PCH	GRP A	GRP B	GRP C	GRP D
C15-12-	12"	\$350	\$455	\$585	\$655	\$695
C15-16-	16"	\$365	\$475	\$625	\$675	\$735
C15-18-	18"	\$375	\$485	\$635	\$685	\$745
C15-24-	24"	\$395	\$525	\$675	\$725	\$895
C15-32-	32"	\$445	\$595	\$725	\$775	\$925
C15-36-	36"	\$475	\$635	\$795	\$845	\$995

- ADA compliant when properly installed
- Complements Roaring 20's, Westfield, Cranford, & Astor collections
- Covers standard 3" flange on existing stainless steel grab bars
- No need to re-tile in retro-fit applications
- 1 1/4" diameter
- For large quantity custom lengths contact hospitality@jaclo.com
- Not available in PG, & SG, for grab bars 32" or longer, but for large quantity orders inquire with hospitality@jaclo.com

GRAB BAR WITH CONTEMPORARY ROUND FLANGE



ITEM	SPECIFICS	PCH	GRP A	GRP B	GRP C	GRP D
C16-12-	12"	\$350	\$455	\$585	\$655	\$695
C16-16-	16"	\$365	\$475	\$625	\$675	\$735
C16-18-	18"	\$375	\$485	\$635	\$685	\$745
C16-24-	24"	\$395	\$525	\$675	\$725	\$895
C16-32-	32"	\$445	\$595	\$725	\$775	\$925
C16-36-	36"	\$475	\$635	\$795	\$845	\$995

- ADA compliant when properly installed
- Complements Contempo & Astor collections
- Covers standard 3" flange on existing stainless steel grab bars
- No need to re-tile in retro-fit applications
- 1 1/4" diameter
- For large quantity custom lengths contact hospitality@jaclo.com
- Not available in PG, & SG, for grab bars 32" or longer, but for large quantity orders inquire with hospitality@jaclo.com

NEW PRODUCTS

IN NOVEMBER 13, 2021 DIGITAL CATALOG



Confidence from start to finish.®

GRAB BAR WITH CONTEMPORARY SQUARE/DIAMOND FLANGE



ITEM	SPECIFICS	PCH	GRP A	GRP B	GRP C	GRP D
C17-12-	12"	\$350	\$455	\$585	\$655	\$695
C17-16-	16"	\$365	\$475	\$625	\$675	\$735
C17-18-	18"	\$375	\$485	\$635	\$685	\$745
C17-24-	24"	\$395	\$525	\$675	\$725	\$895
C17-32-	32"	\$445	\$595	\$725	\$775	\$925
C17-36-	36"	\$475	\$635	\$795	\$845	\$995

- ADA compliant when properly installed
- Complements Cubix®, Astor & Westfield collections
- Covers standard 3" flange on existing stainless steel grab bars
- No need to re-tile in retro-fit applications
- Flange can be mounted in square or diamond position
- 1 1/4" diameter
- For large quantity custom lengths contact hospitality@jaclo.com
- Not available in PG, & SG, for grab bars 32" or longer, but for large quantity orders inquire with hospitality@jaclo.com

GRAB BAR WITH CONTEMPORARY HEX FLANGE



ITEM	SPECIFICS	PCH	GRP A	GRP B	GRP C	GRP D
C19-12-	12"	\$350	\$455	\$585	\$655	\$695
C19-16-	16"	\$365	\$475	\$625	\$675	\$735
C19-18-	18"	\$375	\$485	\$635	\$685	\$745
C19-24-	24"	\$395	\$525	\$675	\$725	\$895
C19-32-	32"	\$445	\$595	\$725	\$775	\$925
C19-36-	36"	\$475	\$635	\$795	\$845	\$995

- ADA compliant when properly installed
- Complements Astor & Westfield collections
- Covers standard 3" flange on existing stainless steel grab bars
- No need to re-tile in retro-fit applications
- 1 1/4" diameter
- For large quantity custom lengths contact hospitality@jaclo.com
- Not available in PG, & SG, for grab bars 32" or longer, but for large quantity orders inquire with hospitality@jaclo.com

NEW PRODUCTS

IN NOVEMBER 13, 2021 DIGITAL CATALOG

JACLO®

Confidence from start to finish.™

1 1/4" GRAB BARS - STAINLESS STEEL



ITEM	SPECIFICS	BSS	PSS	MBK/WH	COLOR
11412RND-	1 1/4" O.D x 12"	\$89	\$105	\$225	\$265
11418RND-	1 1/4" O.D x 18"	\$95	\$115	\$285	\$325
11424RND-	1 1/4" O.D x 24"	\$120	\$140	\$295	\$345
11432RND-	1 1/4" O.D x 32"	\$140	\$160	\$345	\$395
11436RND-	1 1/4" O.D x 36"	\$150	\$175	\$385	\$445
11442RND-	1 1/4" O.D x 42"	\$170	\$189	\$415	\$475
11448RND-	1 1/4" O.D x 48"	\$180	\$195	\$485	\$565

- Contemporary Stainless Steel Grab Bar
- Concealed Screws
- 1 1/4" Diameter
- Individually bagged with 6 stainless steel screws
- Standard & custom finishes are available for large projects. Contact hospitality@jaclo.com for pricing & availability

TOILET TANK TRIP LEVER TO FIT TOTO



ITEM	SPECIFICS	PCH	GRP A	GRP B	GRP C	GRP D
9390-	Side Mount	\$39	\$69	\$120	\$135	\$185

- Toilet tank "trip" lever to fit TOTO model: THU390, THU485
- Brass arm
- Fits TOTO Models: **Vespin II 1G, Drake II 1G, & all 1G dual flush**

TOILET TANK TRIP LEVER TO FIT TOTO



ITEM	SPECIFICS	PCH	GRP A	GRP B	GRP C	GRP D
9391-	Side Mount	\$42	\$72	\$125	\$140	\$195

- Toilet tank "trip" lever to fit TOTO model: THU416
- Brass arm
- Fits TOTO Models: **Connelly and all 1G dual flush**

TOILET TANK TRIP LEVER TO FIT TOTO



ITEM	SPECIFICS	PCH	GRP A	GRP B	GRP C	GRP D
9750-	Side Mount	\$68	\$89	\$120	\$165	\$195

- Toilet tank "trip" lever to fit TOTO model: THU750
- Brass arm & handle
- Fits TOTO Models: **Eco Nexus, Nexus**

NEW PRODUCTS

IN NOVEMBER 13, 2021 DIGITAL CATALOG

JACLO®

Confidence from start to finish.™

TOILET TANK TRIP LEVER TO FIT KOHLER



ITEM	SPECIFICS	PCH	GRP A	GRP B	GRP C	GRP D
9381-	Side Mount	\$39	\$82	\$98	\$135	\$185

- Toilet tank "trip" lever to fit Kohler model: K-3950, K-3981
- Brass arm, spud & handle
- **Fits Kohler Model: Tresham**
- Not available in ULB

TOILET TANK TRIP LEVER TO FIT KOHLER



ITEM	SPECIFICS	PCH	GRP A	GRP B	GRP C	GRP D
9120-	Front Mount	\$39	\$75	\$95	\$135	\$185

- Toilet tank "trip" lever to replace Kohler trip lever K1292297 / K20120-L
- Left handed placement
- Metal arm
- **Fits Kohler Model: Corbelle**

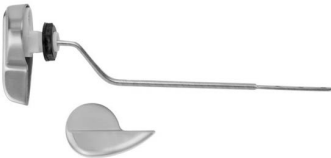
TOILET TANK TRIP LEVER TO FIT KOHLER



ITEM	SPECIFICS	PCH	GRP A	GRP B	GRP C	GRP D
9131-	Side Mount	\$39	\$82	\$98	\$135	\$185

- Toilet tank "trip" lever to fit Kohler model: K-3940
- Brass arm, spud and handle
- **Fits Kohler Model: Kathryn**

TOILET TANK TRIP LEVER TO FIT GERBER



ITEM	SPECIFICS	PCH	GRP A	GRP B	GRP C	GRP D
969-	Side Mount	\$29	\$58	\$79	\$95	\$130

- Toilet tank "trip" lever to fit Gerber
- Brass arm
- **Fits Gerber Models: Allerton, Avalanche, Avalanche Elite, Burr Ridge, Hinsdale, Logan Square Wicker Park 1 pc, Wicker Park 2 pc**
- Not available in ULB

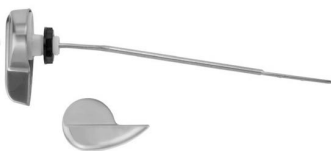
TOILET TANK TRIP LEVER TO FIT AXENT



ITEM	SPECIFICS	PCH	GRP A	GRP B	GRP C	GRP D
9142-	Side Mount	\$72	\$118	\$145	\$175	\$210

- Toilet tank "trip" lever to fit Axent
- Brass arm & handle
- **Fits Axent Model: Italica**

TOILET TANK TRIP LEVER TO FIT CROSSWATER



ITEM	SPECIFICS	PCH	GRP A	GRP B	GRP C	GRP D
906-	Side Mount	\$29	\$58	\$79	\$95	\$130

- Toilet tank "trip" lever to fit Crosswater
- Brass arm
- **Fits Crosswater Model: Heir**
- Not available in ULB

TOILET TANK TRIP LEVER TO FIT CROSSWATER



ITEM	SPECIFICS	PCH	GRP A	GRP B	GRP C	GRP D
967-	Side Mount	\$29	\$58	\$79	\$95	\$130

- Toilet tank "trip" lever to fit Crosswater
- Brass arm
- **Fits Crosswater Model: M-Pro 1 & 2 pc**
- Not available in ULB

NEW PRODUCTS

IN NOVEMBER 13, 2021 DIGITAL CATALOG



Confidence from start to finish.®

ESCUTCHEON & COVER TUBE TO HIDE EXPOSED 1/2" COPPER WHEN USING COMPRESSION TYPE VALVE



ITEM	SPECIFICS	PCH	GRP A	GRP B	GRP C	GRP D
579-	5 1/4" Tube to Cover 1/2" Copper	\$22	\$30	\$40	\$55	\$65
7116-	11/16" I.D. Bell Escutcheon	\$15	\$22	\$32	\$42	\$48
7118-	11/16" Contempo Escutcheon	\$24	\$34	\$58	\$70	\$90
7463-	5/8" O.D. Low Pattern Escutcheon	\$7	\$15	\$22	\$29	\$34

- 579- covers 1/2" copper when using 5/8" O.D. compression supply valve
- 7116 11/16" bell escutcheon for use with 579-
- 7463 5/8" O.D. Flat escutcheon for use with 1/2" copper and no cover tube
- 7116 & 7463 not available in ULB

For additional cover tubes & escutcheons see 6007, 6015 or Sure Grip escutcheons & accessories section

BRANCH TAILPIECE



ITEM	PCH	GRP A	GRP B	GRP C	GRP D
6991-34-	\$85	\$225	\$265	\$285	\$325

- Slip Joint pattern branch tailpiece
- 1 1/2" Branch tailpiece with 7/8" OD Clamp Connection
- Solid brass nut, fully polished and plated
- Not available in ULB

UNIVERSAL 2" CHANNEL DRAIN ADAPTER



ITEM	RGH
CD-ADAPTER-RGH	\$27

- Channel Drain Adapter
- **For use with other manufacturers 2" sub drains**
- Internal o-ring for water tight fit when using JACLO Channel Drain base

NEW PRODUCTS

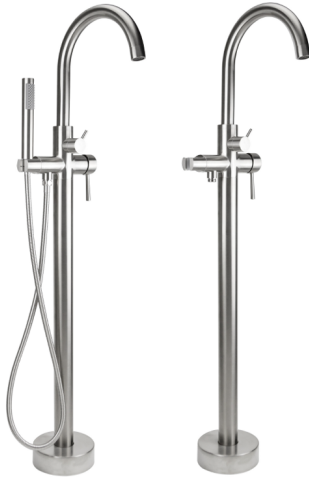
NEW SINCE NOVEMBER 13, 2021 DIGITAL CATALOG

JACLO®

Confidence from start to finish.™

UPTOWN CONTEMPO FREESTANDING TUB FILLER

NEW



9990-FST-

9990-LHHFST-

ITEM	SPECIFICS	PCH	GRP A	GRP B	GRP C	GRP D
9990-FST-	With Handshower & Hose	\$1795	\$2195	\$2995	\$3580	\$3995
9990-LHHFST-	Less Handshower & Hose	\$1635	\$1875	\$2535	\$2960	\$3350

- All brass freestanding tub filler
- 9 5/8" spout reach center to center, 44 5/8" overall height
- Spout and handshower mount both swivel
- High flow ceramic mixing
- Flow rate: 14GPM @ 60PSI for tub spout
- ADA compliant lever handles
- Separate control valve for handshower and tub spout
- 9990-FST- includes: **Handshower (S456), Handshower hose (3060-DS), Stainless steel braided supply hoses, & Tri-pod bracket**
- 9990-LHHFST- includes: **Stainless steel braided supply hoses & Tri-pod bracket**
- 9990-FST- not available in: **BKN, PCU, PG, ULB, WH, & JACLO=COLOR**
- 9990-LHHFST- not available in: **BKN, PCU, PG, ULB**
- Rough-in Part # 9990-FST-BOX-RGH is required for concrete slab or concealed installation ONLY (sold separately-see below)

DOWNTOWN CONTEMPO FREESTANDING TUB FILLER

NEW



9992-FST-

9992-LHHFST-

ITEM	SPECIFICS	PCH	GRP A	GRP B	GRP C	GRP D
9992-FST-	With Handshower & Hose	\$1795	\$2195	\$2995	\$3580	\$3995
9992-LHHFST-	Less Handshower & Hose	\$1635	\$1875	\$2535	\$2960	\$3350

- All brass freestanding tub filler
- 9 5/8" spout reach center to center, 44 5/8" overall height
- Spout and handshower mount both swivel
- High flow ceramic mixing
- Flow rate: 14GPM @ 60PSI for tub spout
- ADA compliant lever handles
- Separate control valve for handshower and tub spout
- 9992-FST- includes: **Handshower (S456), Handshower hose (3060-DS), Stainless steel braided supply hoses, & Tri-pod bracket**
- 9992-LHHFST- includes: **Stainless steel braided supply hoses & Tri-pod bracket**
- 9992-FST- not available in: **BKN, PCU, PG, ULB, WH, & JACLO=COLOR**
- 9992-LHHFST- not available in: **BKN, PCU, PG, ULB**
- Rough-in Part # 9990-FST-BOX-RGH is required for concrete slab or concealed installation ONLY (sold separately-see below)

ROUGH-IN KIT FOR FREESTANDING TUB FILLERS

NEW



Leveling plate included for leveling ease

ITEM	ROUGH
9990-FST-BOX-RGH	\$325

- For concrete slab or concealed rough-in installation for 9990-FST-, 9990-LHHFST-, 9992-FST-, and 9992-LHHFST-
- Includes: **Rough-in box, Leveling plate, Mounting hardware, & Inlet pipes**

REPLACEMENT INLET PIPES FOR FREESTANDING TUB FILLERS

NEW



ITEM	ROUGH
9990-INLET-RGH	\$125

- Replacement inlet pipes for freestanding tub fillers