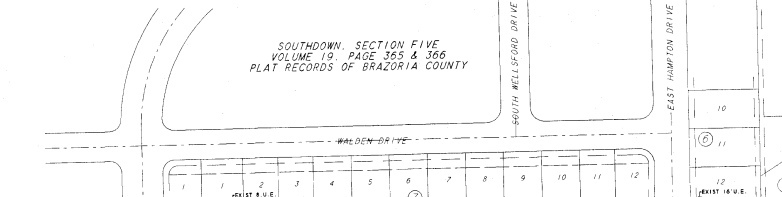


78 J08785

Table with columns: CURVE DELTA, RADIUS, ARC, TANGENT, CHORD, CHORD BEARING, LINE, BEARING, DISTANCE. Contains curve data for the plat.



DEED RECORDS OF BRAZORIA COUNTY
ROBERT POWELL
LOT 41 (1.7 ACRES)
ALLISON RICHEY GULF COAST HOME COMPANY
SUBURBAN GARDENS SUBDIVISION
VOL 491 PG 542

PLAT RECORDS
Vol. 20 Page 35-36
METES AND BOUNDS DESCRIPTION
18.1 ACRES OF 1700 SQUARED FEET

CERTIFICATE OF CITY PLANNING COMMISSION
This is to certify that the City Planning Commission of the City of Pearland, Texas has approved this plat and subdivision of Southdown, Section Eight (8) in accordance with the laws of the State of Texas and ordinances of the City of Pearland and authorized the recording of this plat this 19th day of January 1997.

CERTIFICATE OF COUNTY SUPERVISOR
PLAT APPROVED BY COUNTY SUPERVISOR
Brazoria County, Texas

CERTIFICATE OF COMMISSIONERS' COURT
APPROVED BY THE COMMISSIONERS' COURT OF BRAZORIA COUNTY, TEXAS
this 19th day of March 1997.

CERTIFICATE OF COUNTY ENGINEER
I, Beverly Leeds, County Engineer of Brazoria County, do hereby certify that the plat of this subdivision complies with all existing rules and regulations of this office, as adopted by the Commissioners' Court.

APPROVED BY:
Brazoria County, Texas
19th day of January 1997
Signatures of Commissioners and City Planning Commission members.

NOTARY PUBLIC
MARGIE W. FREY
NOTARY PUBLIC STATE OF TEXAS
COM. EXP. 02-10-2001

FINAL PLAT
SOUTHDOWN SECTION EIGHT
18.11 ACRES OF LAND
OUT OF THE
H.T. & B.R.R. CO. SURVEY, SECTION ONE
BRAZORIA COUNTY, TEXAS
AUGUST 1997
91 LOTS 3 BLOCKS 2 RESERVES .2731 AC

NOTARY PUBLIC
MARGIE W. FREY
NOTARY PUBLIC STATE OF TEXAS
COM. EXP. 02-10-2001

APPROVED BY:
Brazoria County, Texas
19th day of March 1997
Signatures of Commissioners and City Planning Commission members.

CERTIFICATE OF COUNTY ENGINEER
I, Beverly Leeds, County Engineer of Brazoria County, do hereby certify that the plat of this subdivision complies with all existing rules and regulations of this office, as adopted by the Commissioners' Court.

NOTARY PUBLIC
MARGIE W. FREY
NOTARY PUBLIC STATE OF TEXAS
COM. EXP. 02-10-2001