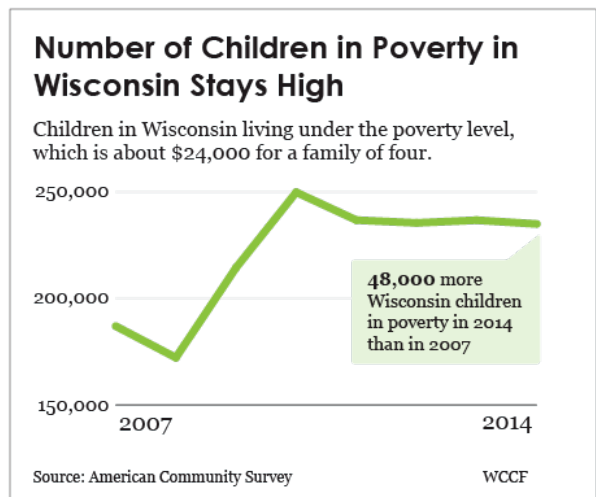


## WISCONSIN POVERTY RATES HIGHEST IN 30 YEARS PARTICULAR IMPACT ON CHILDREN

A Milwaukee Journal Sentinel article on Wisconsin poverty rates shows that the number of Wisconsin residents living in poverty averaged **13%** across the 2010-2014 post-recession time frame — the highest in 30 years (since 1984), according to the analysis by UW-Madison's Applied Population Laboratory.

But for children, it's even worse. Nearly **one in five Wisconsin children** was living in poverty during the 2010-2014 period — 239,000 children in all, or **18.5%** of all children. The children's poverty rate is up significantly from 14.6% in 2005-2009. Only 10 states had faster rates of increase in child poverty than Wisconsin.



Menominee County has the **highest** poverty rate for children in the state: 44.8%.

Milwaukee County, the state's largest urban center, went from **26.4% to 33%** child poverty and is now tied for **second highest** with Sawyer County in northern Wisconsin, where Hayward is located.

Other Wisconsin counties with child poverty rates **above the national average** of 21.9% for 2010-2014 included: Kenosha, Rock, Vilas, Forest, Adams, Clark, Vernon, Monroe, Burnett, Ashland, Rusk and Jackson.”

No county in Wisconsin had a significant decline in child poverty.

Wisconsin children who grow up in poverty are more likely to drop out of school, engage in risky behaviors, and have a wide range of chronic health problems like asthma. As long as our rates of child poverty remain high, Wisconsin risks not having the skilled, healthy workforce we need to build the kind of economic growth that can benefit everyone.

\*\*\*\*\*

### References:

[HTTP://ARCHIVE.JSONLINE.COM/NEWS/WISCONSIN/POVERTY-ACROSS-WISCONSIN-REACHES-HIGHEST-LEVEL-IN-30-YEARS-B99676529Z1-370157381.HTML](http://archive.jsonline.com/news/wisconsin/poverty-across-wisconsin-reaches-highest-level-in-30-years-b99676529z1-370157381.html)

[HTTP://WWW.WCCF.ORG/WISCONSIN-POVERTY-RATES-HIGHEST-IN-30-YEARS-PARTICULAR-IMPACT-ON-CHILDREN/](http://www.wccf.org/wisconsin-poverty-rates-highest-in-30-years-particular-impact-on-children/)

[HTTP://DATACENTER.KIDSCOUNT.ORG/DATA#WI/5/0/CHAR/0](http://datacenter.kidscount.org/data#wi/5/0/char/0)

<http://www.wccf.org/assets/Wisconsin-poverty-2014.pdf>

## WAUKESHA COUNTY

### POPULATION IN POVERTY

<b>Data Type</b>	<b>2006 - 10</b>	<b>2007 - 11</b>	<b>2008 - 12</b>	<b>2009 - 13</b>	<b>2010 - 14</b>
Number	16,865	17,974	19,145	20,818	21,690
Percent	4.4%	4.7%	5.0%	5.4%	5.6%

### CHILDREN LIVING IN POVERTY

<b>Data Type</b>	<b>2006 - 10</b>	<b>2007 - 11</b>	<b>2008 - 12</b>	<b>2009 - 13</b>	<b>2010 - 14</b>
Number	5,291	5,518	6,003	6,528	6,754
Percent	5.6%	5.9%	6.5%	7.2%	7.5%

### CHILDREN LIVING BELOW 50% OF POVERTY LEVEL

<b>Data Type</b>	<b>2006 - 10</b>	<b>2007 - 11</b>	<b>2008 - 12</b>	<b>2009 - 13</b>	<b>2010 - 14</b>
Number	2,079	2,123	2,518	2,675	3,154
Percent	2.2%	2.3%	2.7%	2.9%	3.5%

### POVERTY LEVEL (2016)

Family Size	1	2	4	6	8
Federal Poverty Level	\$11,880	\$16,020	\$24,300	\$32,730	\$40,890

### DEFINITIONS & SOURCES

**Definitions:** These poverty numbers are five-year averages from the American Community Survey, and represent the total number of people under 18 years who live below 50% of the poverty level, divided by the child population for which poverty status is known.

The U.S. Census Bureau website has information on [federal poverty thresholds by year](#).

**Data Source:** This information is taken from Table C17024 from the American Community Survey. The American Community Survey can be accessed here: <http://factfinder2.census.gov>.