

Canyon High School Band Auditions 2017 – 2018

Instrument: Alto + Bari Sax

1. All students with band experience and director approval may be a part of the award winning Canyon High School Band!!
2. Auditions for Brass and Woodwinds are: **Monday, May 1st at Canyon HS Band Hall**
3. Auditions for Percussion will take place during student band classes on 5/1 – 5/4.
4. All students wishing to participate in band are required to complete an audition.
5. Auditions determine which class period band students are placed in for the fall. Failure to audition for band will prevent placement into the band program.
6. All students in the band program are in marching band *and* concert band. Marching Band is a “zero” hour course and meets before or after school for the first 10 weeks of school only. Concert Band is the band class period that meets throughout the year.
7. There are expected to be (5) ensembles in which students may be assigned:
 - i. Wind Ensemble
 - ii. Symphonic Winds
 - iii. Symphonic Band
 - iv. Freshmen Honor Band
 - v. Concert Band
8. Ensemble placement may potentially change at the semester. This could require a schedule change (typically minor). This is particularly true for all percussion and some freshmen band students.
9. Students will be placed into three levels of marching band based on these auditions, marching ability/physical coordination, and attendance:
 - i. Varsity - Perform at all games, all contests, and all pep rallies and parades. Note: Additional letter jacket points are earned for Varsity placement.
 - ii. J.V. – Potential varsity promotion. Perform at games (limited half-time performances), limited contest participation, perform at all pep rallies and parades.
 - iii. Cadet – Perform at games (limited half-time performances), no contest events, perform at all pep rallies and parades.
10. Students that choose to participate in other *school sponsored UIL competitive activities* in addition to band during the fall semester (August – October) may be placed into “Cadet” marching band to facilitate the participation in multiple activities. Examples of this include: Football, Volleyball, Varsity Cross Country, Varsity Tennis, Varsity Swim. If you have specific questions about how band might work with another activity, please speak to a director.
11. If you would like to be considered for a J.V. or Varsity level marching band position, you must be able to commit to all rehearsals and events.
12. Interested in *Jazz Band*?? If you play Trumpet, Trombone, Saxophone, or a rhythm section instrument (piano, guitar, bass, or drums) you may audition for jazz band. Band audition placement will determine your jazz band placement. You must be concurrently enrolled in a traditional band class to participate in jazz band.
13. Interested in *Color Guard*?? Color Guard auditions happen in early-mid May. Listen for announcements regarding this. You can participate in band and color guard. Please speak to a director about this if you’re interested.
14. Interested in *Applied Music or Music Theory AP*?? These are two advanced courses that you could take in addition to your standard band placement. Please speak to a director about how this might fit into your musical goals.

www.canyonband.org

HOW TO PREPARE THE CHS BAND AUDITION MUSIC

Brass and Woodwinds:

1. **Scales:** Everyone will be asked to play 3 – 4 of the scales on the scale sheet. Prepare these to showcase your best skills. If you can play the full range printed, please do so! If you can only play one octave, then do that. Do what sounds best. Good tone is the priority. If they are accurate with a good sound slowly, then speed them up.
2. **Excerpts:** There are (3) excerpts. You should prepare what best showcases your skills.
 - a. The minimum audition requirement is the first excerpt only in addition to the scales. This would qualify a student for a “Cadet” marching band position and an intermediate level concert ensemble.
 - b. If you are in grades 9 – 12 and wish to be considered for a “Varsity” or “JV” Marching Band position and an advanced level concert ensemble, then you should prepare at minimum the first two excerpts in addition to the scales.
 - c. Students that prepare all three excerpts successfully in addition to the scales will likely be ranked the highest in the auditions.
 - d. Again, prepare what best showcases your skills and interest level in band.
3. **Sight-Reading:** There will be a very short sight-reading excerpt.

Percussion:

These auditions will determine your band class placement for next year.

1. **Selections 1 – 3:** (Two mallet exercises and one snare exercise)
 - a. Prepare at noted tempo markings.
2. **Sight-Reading:** There will be a short snare sight-reading excerpt.
3. **Drumline:** A separate audition camp is scheduled 5/8 – 5/12 from 4:30 – 6:00 p.m. for students interested in auditioning to be a part of the marching drumline. Students will be placed in either Varsity Drumline, Varsity Front Ensemble, or Cadet Drumline for Marching Band.

** 3-4 scales will be selected from these.*

February 2016

ATSSB E_b Alto & Baritone Saxophone Scales

All scales are to be played at a minimum of $\text{♩} = 120$

1. Concert G (written E) Major Scale



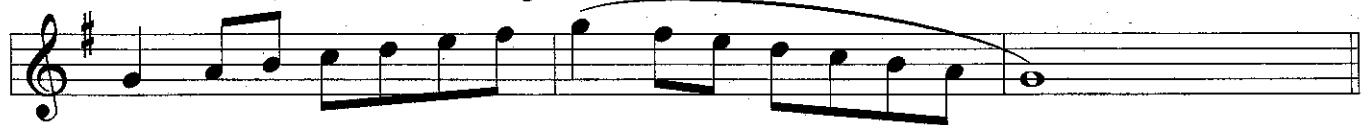
2. Concert C (written A) Major Scale



3. Concert F (written D) Major Scale



4. Concert B_b (written G) Major Scale



5. Concert E_b (written C) Major Scale



6. Concert A_b (written F) Major Scale



7. Concert D_b (written B_b) Major Scale



8. Chromatic Scale



These excerpts will provide the adjudicators with information about tone quality, rhythm, style, technique, and musical expressiveness. The information will be used to place students into a band appropriate to their playing level. All bands will have a balanced instrumentation.

Alto + Bass
Sax

Selection #1 ♩ = 112

Musical notation for Selection #1, Alto and Bass Saxophone part. The piece is in 2/4 time with a key signature of two sharps (F# and C#). The tempo is marked as ♩ = 112. The notation consists of three staves. The first staff starts with a dynamic marking of *mf* and ends with *p*. The second staff starts at measure 5 with a dynamic marking of *f* and ends with *p*. The third staff starts at measure 9 with a dynamic marking of *f* and ends with a double bar line.

Selection #2 ♩ = 120

Musical notation for Selection #2, Alto and Bass Saxophone part. The piece is in 2/4 time with a key signature of one sharp (F#). The tempo is marked as ♩ = 120. The notation consists of two staves. The first staff starts with a dynamic marking of *p* and ends with *f*. The second staff starts at measure 9 with a dynamic marking of *p* and ends with *f*. There are accents (>) over several notes in both staves.

Selection #3 ♩ = 76-80

Musical notation for Selection #3, Alto and Bass Saxophone part. The piece is in 2/4 time with a key signature of one sharp (F#). The tempo is marked as ♩ = 76-80. The notation consists of three staves. The first staff starts with a dynamic marking of *f* and ends with *mf*. The second staff starts at measure 6 with a dynamic marking of *f* and ends with *p*. The third staff starts at measure 12 with a dynamic marking of *f* and ends with *p*. There are accents (>) over several notes in the second and third staves.