



Office: 303.985.0609

Cell: 720.363.0548

www.foremostsolutions.com

isolite@ix.netcom.com

Lakewood, Colorado

Isolite®CG - Condominium for Microbes:

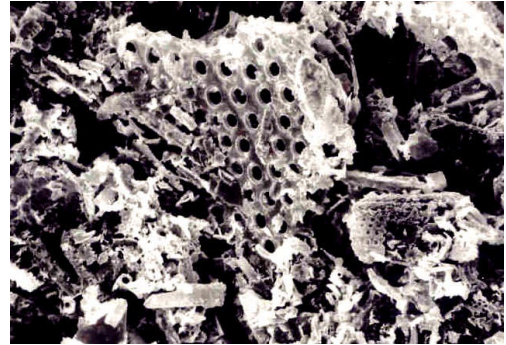
(Biological Support Matrix)

1 gram of Isolite®CG supports 2×10^7 bacteria for colonization

200,000,000/gram

Isolite®CG Properties:

- Made from **diatomaceous earth** and a small amount of clay particles
- **Chemically inert particle density:** 2.27 (compared to 2.56 for sand)
- **Pore characteristics:** continuous, interconnected and open ended; thereby, permitting easy inoculation with microbes. Because of the internal pores, immobilized microbes are protected from shear kill.
- **Pore size:** 0.1 to 2 microns with 30% being over 1 micron
- **Life expectancy:** Isolite has an indefinite lifetime and can be reused.



Colonized Bacteria inside Isolate®CG Slime Cavity

Testing performed by: William Mahaffey, Ph.D.