

Santa Rosa County Local Residential Market Metrics - 2018

Single Family Homes

Municipalities and Census-Designated Places*



Name of County, Municipality, or CDP*	Closed Sales	Y/Y % Chg.	Closed Sales Paid in Cash	Y/Y % Chg.	Median Sale Price	Y/Y % Chg.	Average Sale Price	Y/Y % Chg.
Santa Rosa County	4,368	7.7%	604	10.0%	\$228,500	6.3%	\$253,743	6.6%
Allentown (CDP)	8	0.0%	1	0.0%	\$188,500	9.3%	\$209,438	14.8%
Avalon (CDP)	26	85.7%	4	100.0%	\$259,000	73.2%	\$241,269	39.0%
Bagdad (CDP)	88	2.3%	17	41.7%	\$175,869	11.7%	\$173,816	13.0%
Berrydale (CDP)	1	-75.0%	1	N/A	\$130,000	-4.8%	\$130,000	-21.6%
Brownsdale (CDP)	2	-60.0%	0	-100.0%	\$204,950	51.9%	\$204,950	63.2%
Chumuckla (CDP)	7	-56.3%	2	0.0%	\$274,500	19.4%	\$250,779	13.6%
Cobbtown (CDP)	1	0.0%	1	N/A	\$60,000	-61.4%	\$60,000	-61.4%
Dickerson City (CDP)	3	0.0%	0	N/A	\$320,000	46.1%	\$298,300	-10.1%
Dixonville (CDP)	1	N/A	1	N/A	\$100,000	N/A	\$100,000	N/A
East Milton (CDP)	123	-2.4%	20	-41.2%	\$187,930	14.6%	\$228,248	26.6%
Fidelis (CDP)	2	N/A	0	N/A	\$110,700	N/A	\$110,700	N/A
Floridatown (CDP)	7	133.3%	1	0.0%	\$555,000	423.6%	\$406,857	423.4%
Garcon Point (CDP)	15	7.1%	3	0.0%	\$201,000	0.5%	\$247,210	-7.1%
Gulf Breeze (City)	111	0.9%	32	3.2%	\$334,500	-17.4%	\$492,472	2.0%
Harold (CDP)	2	100.0%	0	N/A	\$192,500	-6.1%	\$192,500	-6.1%
Holley (CDP)	67	103.0%	9	200.0%	\$260,301	37.7%	\$234,720	27.1%
Jay (Town)	10	100.0%	4	N/A	\$117,500	34.3%	\$126,540	30.8%
Midway (CDP)	457	16.3%	82	39.0%	\$245,000	7.5%	\$309,847	8.6%
Milton (City)	217	29.9%	37	8.8%	\$156,000	14.3%	\$148,994	13.3%
Mount Carmel (CDP)	2	100.0%	0	-100.0%	\$101,500	-48.2%	\$101,500	-48.2%
Mulat (CDP)	9	0.0%	2	100.0%	\$204,900	-27.3%	\$232,788	-6.7%
Munson (CDP)	0	N/A	0	N/A	(No Sales)	N/A	(No Sales)	N/A
Navarre (CDP)	1,241	8.3%	106	24.7%	\$245,000	5.6%	\$259,268	5.2%
Navarre Beach (CDP)	54	20.0%	9	28.6%	\$485,000	-5.6%	\$517,753	-5.1%
Oriole Beach (CDP)	40	0.0%	11	10.0%	\$228,000	5.6%	\$266,801	14.5%
Pace (CDP)	533	-5.3%	82	20.6%	\$210,000	2.9%	\$218,811	4.6%
Pea Ridge (CDP)	53	15.2%	6	-14.3%	\$134,000	4.7%	\$144,075	17.5%
Pine Level (CDP)	4	33.3%	0	-100.0%	\$129,500	2.4%	\$143,225	27.7%
Point Baker (CDP)	50	16.3%	5	0.0%	\$158,500	9.3%	\$153,824	2.8%
Roeville (CDP)	0	N/A	0	N/A	(No Sales)	N/A	(No Sales)	N/A
Springhill (CDP)	0	-100.0%	0	N/A	(No Sales)	N/A	(No Sales)	N/A
Tiger Point (CDP)	95	-8.7%	20	-28.6%	\$270,000	3.1%	\$314,359	7.3%
Wallace (CDP)	116	-21.1%	16	23.1%	\$291,171	14.7%	\$294,108	13.7%
Whitfield (CDP)	2	100.0%	1	N/A	\$140,000	-2.8%	\$140,000	-2.8%
Woodlawn Beach (CDP)	106	-32.9%	15	-37.5%	\$325,442	27.1%	\$308,112	13.2%

*Florida municipalities consist of incorporated cities, towns, and villages. Florida law makes no distinction between these three types. CDPs are unincorporated communities identified and delineated each decennial U.S. Census for statistical purposes only (so their boundaries have no political meaning). Boundaries used for this report are as of Jan. 1, 2015.

Produced by Florida REALTORS® with data provided by Florida's multiple listing services. Statistics for each month compiled from MLS feeds on the 15th day of the following month.

Data released on Tuesday, February 12, 2019. Next yearly data release is TBD.

Santa Rosa County Local Residential Market Metrics - 2018

Single Family Homes

Municipalities and Census-Designated Places*



Name of County, Municipality, or CDP*	Dollar Volume	Y/Y % Chg.	Pct. of Orig. List Price Received	Y/Y % Chg.	Median Time to Contract	Y/Y % Chg.	New Listings	Y/Y % Chg.
Santa Rosa County	\$1.1 Billion	14.8%	99.0%	0.0%	32 Days	-8.6%	4,911	4.2%
Allentown (CDP)	\$1.7 Million	14.8%	100.0%	0.0%	23 Days	-17.9%	12	50.0%
Avalon (CDP)	\$6.3 Million	158.2%	97.9%	0.9%	25 Days	-10.7%	27	22.7%
Bagdad (CDP)	\$15.3 Million	15.6%	100.0%	0.0%	27 Days	17.4%	90	-1.1%
Berrydale (CDP)	\$130,000	-80.4%	86.7%	-14.0%	138 Days	1154.5%	1	-83.3%
Brownsdale (CDP)	\$409,900	-34.7%	95.2%	10.6%	114 Days	81.0%	4	-33.3%
Chumuckla (CDP)	\$1.8 Million	-50.3%	96.0%	-0.8%	31 Days	-39.2%	9	-59.1%
Cobbtown (CDP)	\$60,000	-61.4%	60.6%	-33.8%	198 Days	55.9%	1	0.0%
Dickerson City (CDP)	\$894,900	-10.1%	95.9%	-3.6%	75 Days	837.5%	3	-25.0%
Dixonville (CDP)	\$100,000	N/A	90.9%	N/A	26 Days	N/A	1	N/A
East Milton (CDP)	\$28.1 Million	23.6%	100.0%	1.9%	56 Days	-8.2%	150	18.1%
Fidelis (CDP)	\$221,400	N/A	89.1%	N/A	207 Days	N/A	1	0.0%
Floridatown (CDP)	\$2.8 Million	1121.3%	93.2%	-3.3%	101 Days	2425.0%	9	200.0%
Garcon Point (CDP)	\$3.7 Million	-0.4%	94.7%	-2.8%	50 Days	138.1%	9	-52.6%
Gulf Breeze (City)	\$54.7 Million	2.9%	98.2%	2.2%	34 Days	13.3%	135	-2.9%
Harold (CDP)	\$385,000	87.8%	102.0%	12.0%	128 Days	300.0%	1	-50.0%
Holley (CDP)	\$15.7 Million	158.1%	100.0%	0.0%	12 Days	-36.8%	78	41.8%
Jay (Town)	\$1.3 Million	161.5%	92.1%	-7.9%	99 Days	330.4%	7	40.0%
Midway (CDP)	\$141.6 Million	26.3%	98.3%	0.4%	36 Days	16.1%	480	-4.8%
Milton (City)	\$32.3 Million	47.2%	98.5%	0.6%	44 Days	0.0%	247	23.5%
Mount Carmel (CDP)	\$203,000	3.6%	92.4%	1.3%	57 Days	83.9%	2	0.0%
Mulat (CDP)	\$2.1 Million	-6.7%	93.0%	-1.0%	98 Days	96.0%	11	10.0%
Munson (CDP)	(No Sales)	N/A	(No Sales)	N/A	(No Sales)	N/A	0	N/A
Navarre (CDP)	\$321.8 Million	13.9%	100.0%	0.4%	24 Days	-7.7%	1,276	-2.8%
Navarre Beach (CDP)	\$28.0 Million	13.9%	97.1%	2.2%	51 Days	-49.0%	64	25.5%
Oriole Beach (CDP)	\$10.7 Million	14.5%	98.3%	1.7%	35 Days	75.0%	53	23.3%
Pace (CDP)	\$116.6 Million	-0.9%	98.2%	-1.2%	45 Days	9.8%	453	-25.9%
Pea Ridge (CDP)	\$7.6 Million	35.4%	95.9%	-2.6%	29 Days	52.6%	48	-12.7%
Pine Level (CDP)	\$572,900	70.3%	90.7%	-19.3%	45 Days	-84.5%	3	50.0%
Point Baker (CDP)	\$7.7 Million	19.5%	98.3%	0.0%	19 Days	-36.7%	53	32.5%
Roeville (CDP)	(No Sales)	N/A	(No Sales)	N/A	(No Sales)	N/A	1	N/A
Springhill (CDP)	(No Sales)	N/A	(No Sales)	N/A	(No Sales)	N/A	1	0.0%
Tiger Point (CDP)	\$29.9 Million	-2.0%	97.1%	1.3%	32 Days	0.0%	103	-17.6%
Wallace (CDP)	\$34.1 Million	-10.3%	99.1%	-0.9%	43 Days	-44.2%	107	-33.5%
Whitfield (CDP)	\$280,000	94.4%	98.2%	22.8%	24 Days	-80.2%	2	N/A
Woodlawn Beach (CDP)	\$32.7 Million	-24.1%	100.0%	0.6%	49 Days	0.0%	109	-44.7%

*Florida municipalities consist of incorporated cities, towns, and villages. Florida law makes no distinction between these three types. CDPs are unincorporated communities identified and delineated each decennial U.S. Census for statistical purposes only (so their boundaries have no political meaning). Boundaries used for this report are as of Jan. 1, 2015.

Produced by Florida REALTORS® with data provided by Florida's multiple listing services. Statistics for each month compiled from MLS feeds on the 15th day of the following month.

Data released on Tuesday, February 12, 2019. Next yearly data release is TBD.

Santa Rosa County Local Residential Market Metrics - 2018

Single Family Homes

Municipalities and Census-Designated Places*



Name of County, Municipality, or CDP*	New Pending Sales	Y/Y % Chg.	Pending Inventory	Y/Y % Chg.	Active Inventory	Y/Y % Chg.	Months Supply of Inventory	Y/Y % Chg.
Santa Rosa County	4,630	4.5%	437	-10.3%	923	-10.2%	2.5	-16.7%
Allentown (CDP)	9	50.0%	0	N/A	3	50.0%	4.5	50.0%
Avalon (CDP)	26	62.5%	3	50.0%	2	-50.0%	0.9	-73.5%
Bagdad (CDP)	93	2.2%	18	5.9%	18	0.0%	2.5	0.0%
Berrydale (CDP)	0	-100.0%	0	-100.0%	1	N/A	12.0	N/A
Brownsdale (CDP)	2	-71.4%	0	N/A	1	0.0%	6.0	150.0%
Chumuckla (CDP)	5	-68.8%	1	0.0%	1	-80.0%	1.7	-55.3%
Cobbtown (CDP)	1	0.0%	0	N/A	0	N/A	0.0	N/A
Dickerson City (CDP)	2	-50.0%	0	-100.0%	0	N/A	0.0	N/A
Dixonville (CDP)	1	N/A	0	N/A	0	N/A	0.0	N/A
East Milton (CDP)	140	8.5%	21	75.0%	30	-30.2%	2.9	-29.3%
Fidelis (CDP)	1	0.0%	0	-100.0%	0	N/A	0.0	N/A
Floridatown (CDP)	10	400.0%	1	N/A	1	N/A	1.7	N/A
Garcon Point (CDP)	14	0.0%	0	-100.0%	3	-57.1%	2.4	-60.0%
Gulf Breeze (City)	122	9.9%	14	250.0%	24	-25.0%	2.6	-25.7%
Harold (CDP)	1	-50.0%	0	N/A	0	-100.0%	0.0	-100.0%
Holley (CDP)	58	61.1%	4	-20.0%	19	0.0%	3.4	-50.7%
Jay (Town)	10	100.0%	0	-100.0%	1	-50.0%	1.2	-75.0%
Midway (CDP)	465	1.1%	21	-50.0%	59	-46.4%	1.5	-55.9%
Milton (City)	245	32.4%	28	33.3%	49	0.0%	2.7	-22.9%
Mount Carmel (CDP)	2	100.0%	0	N/A	0	-100.0%	0.0	-100.0%
Mulat (CDP)	11	22.2%	1	N/A	1	-85.7%	1.3	-86.0%
Munson (CDP)	0	N/A	0	N/A	0	N/A	0.0	N/A
Navarre (CDP)	1,258	-2.6%	50	-61.2%	102	-53.2%	1.0	-56.5%
Navarre Beach (CDP)	63	16.7%	3	-25.0%	13	-48.0%	2.9	-56.7%
Oriole Beach (CDP)	53	29.3%	5	150.0%	7	75.0%	2.1	75.0%
Pace (CDP)	547	-7.9%	32	-48.4%	48	-67.6%	1.1	-65.6%
Pea Ridge (CDP)	53	6.0%	2	-50.0%	3	-66.7%	0.7	-69.6%
Pine Level (CDP)	4	33.3%	0	N/A	0	-100.0%	0.0	-100.0%
Point Baker (CDP)	53	26.2%	2	-50.0%	3	0.0%	0.7	-12.5%
Roeville (CDP)	1	N/A	0	N/A	1	N/A	0.0	N/A
Springhill (CDP)	0	-100.0%	0	N/A	0	N/A	0.0	N/A
Tiger Point (CDP)	99	-7.5%	4	-60.0%	17	-26.1%	2.1	-22.2%
Wallace (CDP)	108	-26.5%	14	-46.2%	23	-34.3%	2.4	-17.2%
Whitfield (CDP)	1	N/A	0	N/A	0	N/A	0.0	N/A
Woodlawn Beach (CDP)	102	-48.7%	7	-77.4%	15	-51.6%	1.7	-29.2%

*Florida municipalities consist of incorporated cities, towns, and villages. Florida law makes no distinction between these three types. CDPs are unincorporated communities identified and delineated each decennial U.S. Census for statistical purposes only (so their boundaries have no political meaning). Boundaries used for this report are as of Jan. 1, 2015.

Produced by Florida REALTORS® with data provided by Florida's multiple listing services. Statistics for each month compiled from MLS feeds on the 15th day of the following month.

Data released on Tuesday, February 12, 2019. Next yearly data release is TBD.

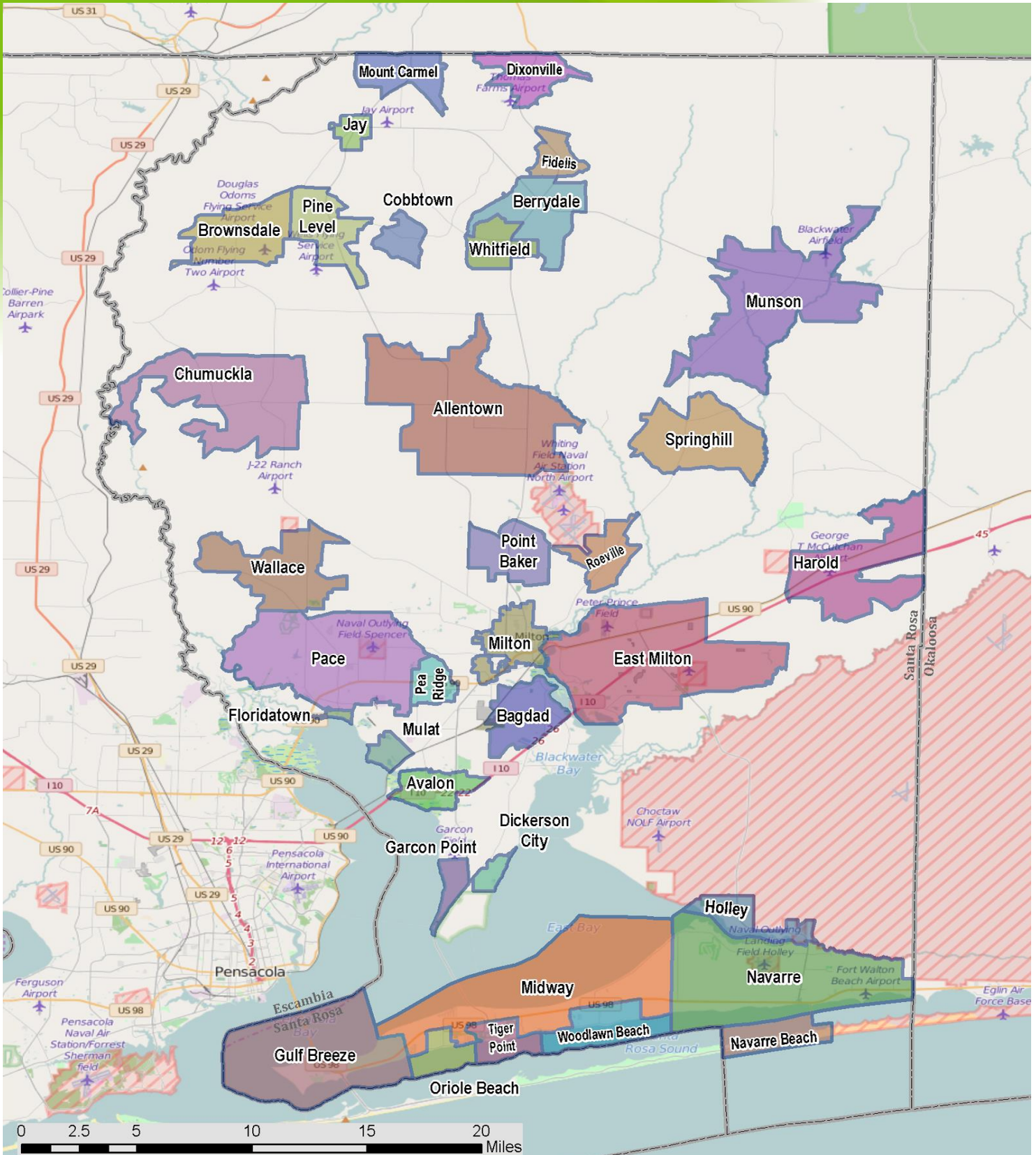
Santa Rosa County Local Residential Market Metrics - 2018

Reference Map

Municipalities and Census-Designated Places*



FloridaRealtors®
The Voice for Real Estate® in Florida



*Florida municipalities consist of incorporated cities, towns, and villages. Florida law makes no distinction between these three types. CDPs are unincorporated communities identified and delineated each decennial U.S. Census for statistical purposes only (so their boundaries have no political meaning). Boundaries used for this report are as of Jan. 1, 2015.

Produced by Florida REALTORS® with data provided by Florida's multiple listing services. Statistics for each month compiled from MLS feeds on the 15th day of the following month.

Data released on Tuesday, February 12, 2019. Next yearly data release is TBD.