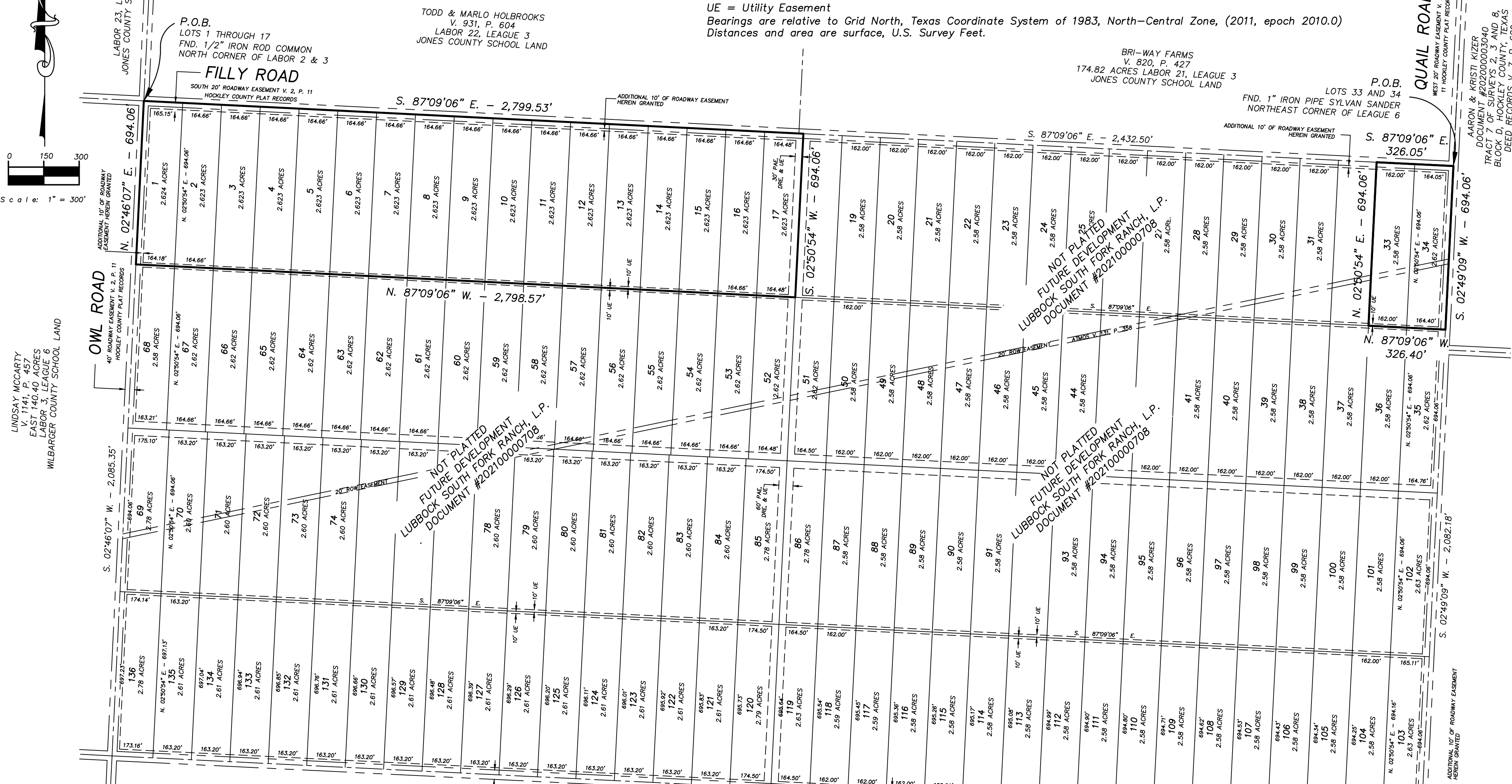


**NOTE:**  
 All plat limit corners are 1/2" iron rods with blue plastic cap inscribed "CHT RPLS 6460" unless noted otherwise.  
 Reference corners set at intersection of lot lines and road margins.  
 Easements shown within plat limits not previously dedicated are herein dedicated.  
 DRE = Drainage Easement  
 PAE = Public Access Easement  
 UE = Utility Easement  
 Bearings are relative to Grid North, Texas Coordinate System of 1983, North-Central Zone, (2011, epoch 2010.0)  
 Distances and area are surface, U.S. Survey Feet.



Heavy lines indicate plat limits.  
 All streets, alleys, and easements within plat limits not previously recorded are herein dedicated.  
 All easements herein granted shall entitle the county or the utility company using such easements to the right to remove, repair, or replace any lines, pipes, conduits, or poles within such easements as may be determined by the county or utility company without the county or utility company being responsible or liable for the replacement of improvements, paving, or surfacing of the easement necessitated by such removal, repair, or replacement. Easements designated or intended for vehicular passage (utility and emergency) or pedestrian access shall not be fenced or otherwise obstructed.  
 Any relocation or revision of existing facilities shall be at the developer's expense. Compensation shall be made prior to the recording of any portion of this final plat.  
 Blanket garbage collection easement as required for service within the plat limits is herein granted.  
 All existing or proposed utility easements to and on tracts indicated by this plat shall be contained in the public right-of-way and public or private utility easements. Utility service installation requested at a future date, and not within an easement indicated by this plat, shall be within a proper utility easement granted by the owner of said property or by separate recorded instrument prior to the provision of such service. Such easements shall be at the developer's expense.

GARY & CYNTHIA BELL  
 V. 1026, P. 188  
 LABOR 9, LEAGUE 6  
 WILBARGER CSL

**FINAL PLAT**  
 LOTS 1 THROUGH 17, 33 & 34

# WOLFFORTH WEST

A 44.598 ACRE AND A 5.198 ACRE SUBDIVISION OF HOCKLEY COUNTY, TEXAS  
 SITUATED IN LABORS 1 & 2, LEAGUE 6, WILBARGER COUNTY SCHOOL LAND  
 ACCORDING TO THE PLAT RECORDED IN  
 VOLUME 2, PAGE 11 OF THE PLAT RECORDS OF HOCKLEY COUNTY, TEXAS.

## PAGE 1 OF 2

SCALE: 1" = 300'	APPROVED & CERTIFIED BY: CYRIL H. TURNER, RPLS 6460 03/09/2021	DRAWN BY: CHT
SURVEY DATE: 03/01/2021	FILE NAME: 21-LE0005	

**QJD Engineering, L.P.**  
 Consulting Engineers & Surveyors

806-791-2300  
 328 E. HWY. 62/82 UNIT#1  
 Wolfforth, TX 79382

DRAWING NUMBER  
1 of 1