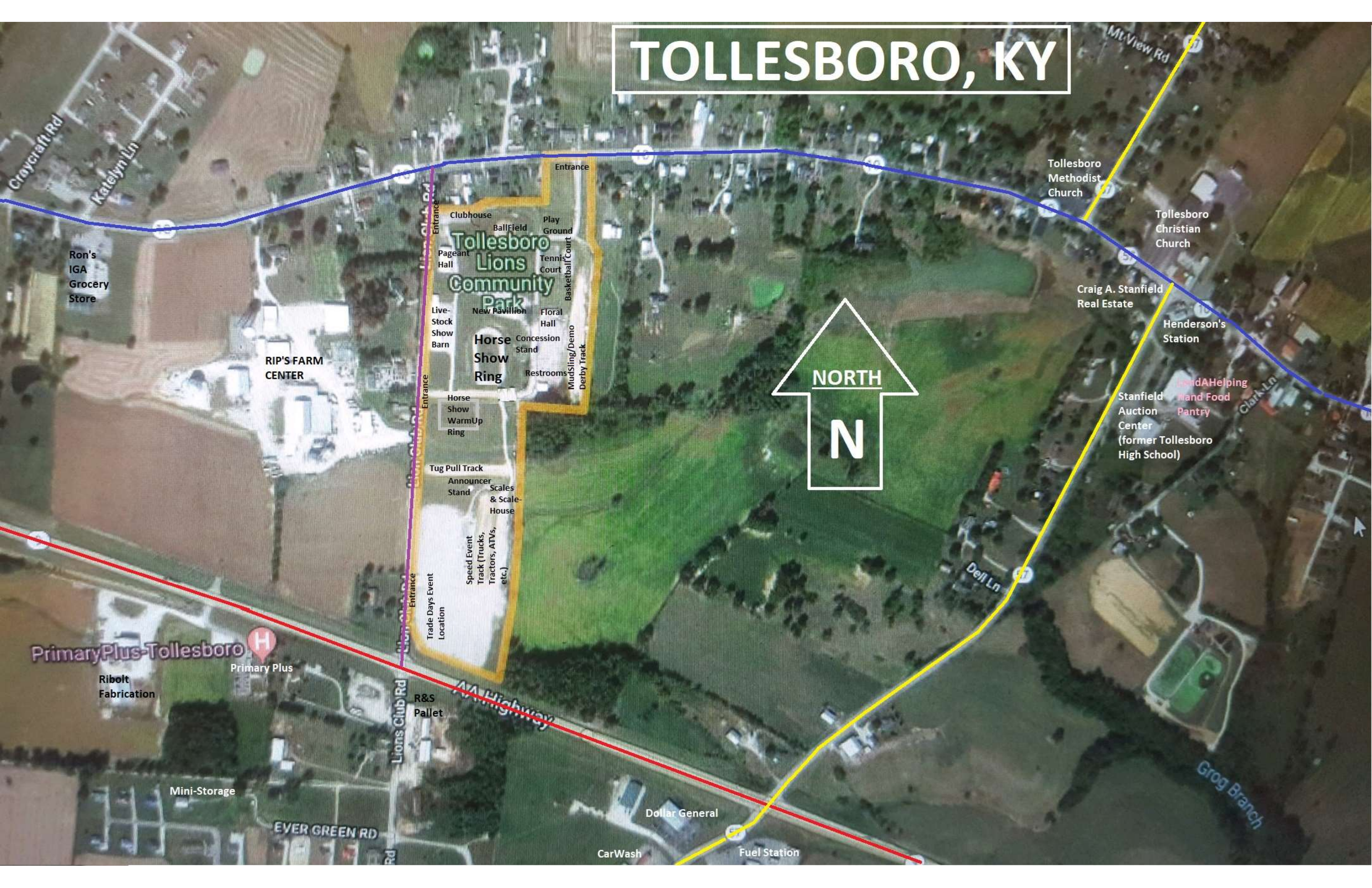


# TOLLESBORO, KY



**Tollesboro  
Lions  
Community  
Park**

**Horse  
Show  
Ring**

**PrimaryPlus-Tollesboro**

**TOLLESBORO, KY**

**NORTH**

**N**

**RIP'S FARM  
CENTER**

**Ron's  
IGA  
Grocery  
Store**

**Tollesboro  
Methodist  
Church**

**Tollesboro  
Christian  
Church**

**Craig A. Stanfield  
Real Estate**

**Henderson's  
Station**

**LandA Helping  
Hand Food  
Pantry**

**Stanfield  
Auction  
Center  
(former Tollesboro  
High School)**

**Ribolt  
Fabrication**

**Primary Plus**

**Mini-Storage**

**R&S  
Pallet**

**Dollar General**

**CarWash**

**Fuel Station**

**Grog Branch**

**EVER GREEN RD**

**Lions Club Rd**

**AA Highway**

**Dell Ln**

**Clark Ln**

**Mt View Rd**

**Craycraft Rd**

**Katelyn Ln**

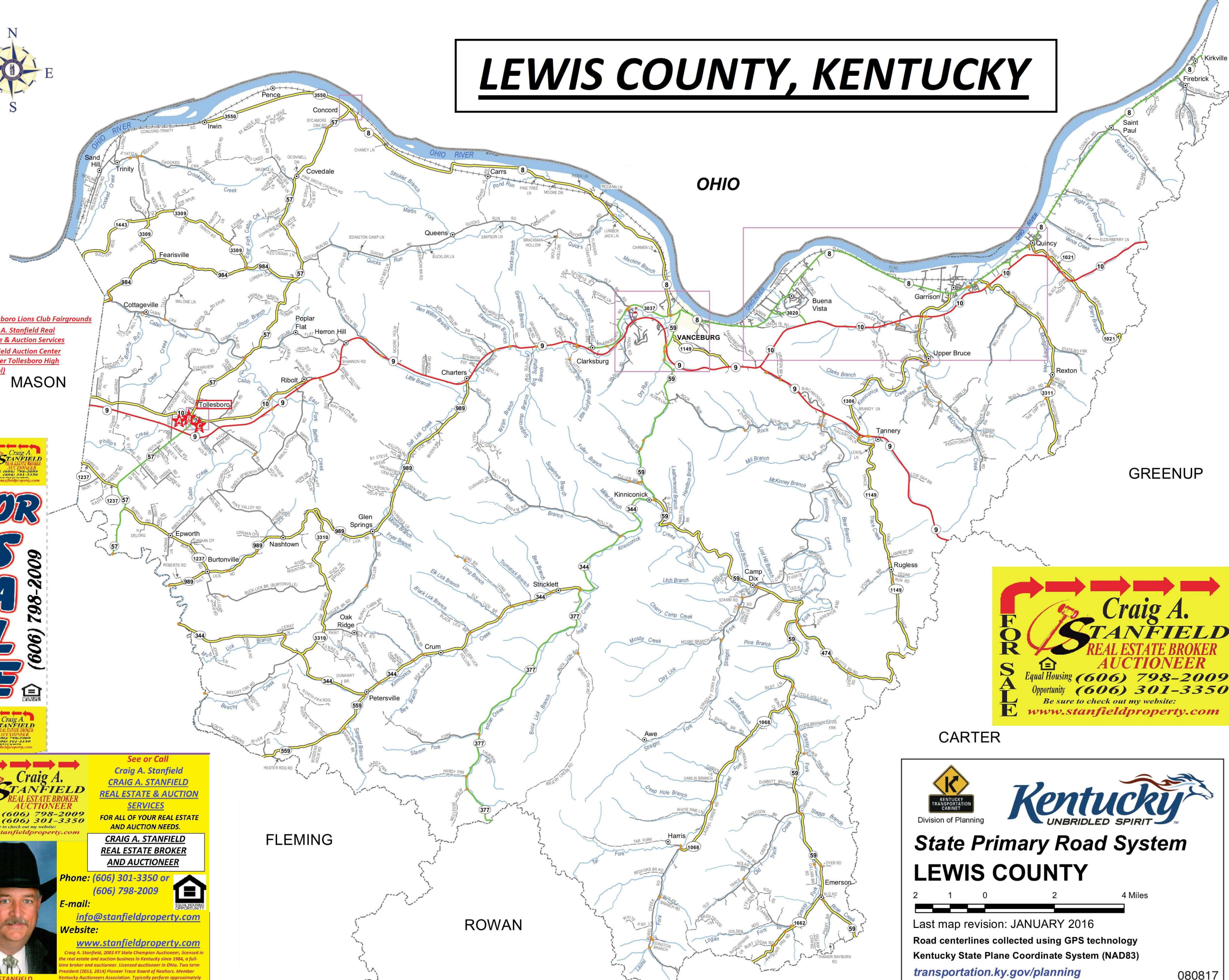


# Tollesboro Lions Club Fairgrounds





# LEWIS COUNTY, KENTUCKY



- LEGEND**
- ★ Tollesboro Lions Club Fairgrounds
  - ★ Craig A. Stanfield Real Estate & Auction Services
  - ★ Stanfield Auction Center (former Tollesboro High School)

**FOR SALE**  
 (606) 798-2009  
 CRAIG A. STANFIELD  
 REAL ESTATE BROKER  
 AUCTIONEER

**FOR SALE**  
**Craig A. STANFIELD**  
 REAL ESTATE BROKER  
 AUCTIONEER  
 Equal Housing Opportunity  
 (606) 798-2009  
 (606) 301-3350  
 Be sure to check out my website:  
[www.stanfieldproperty.com](http://www.stanfieldproperty.com)

**FOR SALE**  
**Craig A. STANFIELD**  
 REAL ESTATE BROKER  
 AUCTIONEER  
 Equal Housing Opportunity  
 (606) 798-2009  
 (606) 301-3350  
 Be sure to check out my website:  
[www.stanfieldproperty.com](http://www.stanfieldproperty.com)

See or Call  
**Craig A. STANFIELD**  
 REAL ESTATE & AUCTION SERVICES  
 FOR ALL OF YOUR REAL ESTATE AND AUCTION NEEDS.

**CRAIG A. STANFIELD**  
 REAL ESTATE BROKER  
 AND AUCTIONEER

Phone: (606) 301-3350 or (606) 798-2009  
 E-mail: [info@stanfieldproperty.com](mailto:info@stanfieldproperty.com)  
 Website: [www.stanfieldproperty.com](http://www.stanfieldproperty.com)

**CRAIG A. STANFIELD**  
 Broker & Auctioneer

Craig A. Stanfield, 2003 KY State Champion Auctioneer, licensed in the real estate and auction business in Kentucky since 1984, a full-time broker and auctioneer. Licensed auctioneer in Ohio. Two term president (2012, 2014) Pioneer Trade Board of Realtors, Member Kentucky Auctioneers Association. Typically perform approximately 20 charity auctions annually to support local non-profit organizations, at no cost to the organization.

**Kentucky**  
 UNBRIDLED SPIRIT™

Division of Planning

**State Primary Road System**  
**LEWIS COUNTY**

2 1 0 2 4 Miles

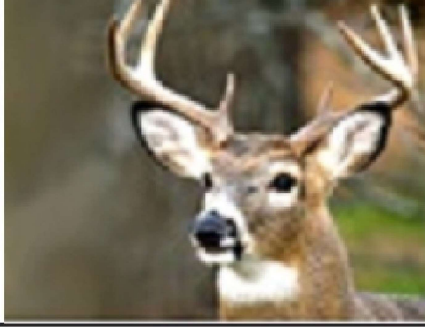
Last map revision: JANUARY 2016  
 Road centerlines collected using GPS technology  
 Kentucky State Plane Coordinate System (NAD83)  
[transportation.ky.gov/planning](http://transportation.ky.gov/planning)

080817





**Craig A. STANFIELD**  
 REAL ESTATE BROKER  
 AUCTIONEER



**WHITETAIL DEER & WILD TURKEY HUNTING RETREATS FOR SALE!!!**  
 E-mail: [info@stanfieldproperty.com](mailto:info@stanfieldproperty.com)  
 Check out my website  
[www.stanfieldproperty.com](http://www.stanfieldproperty.com)

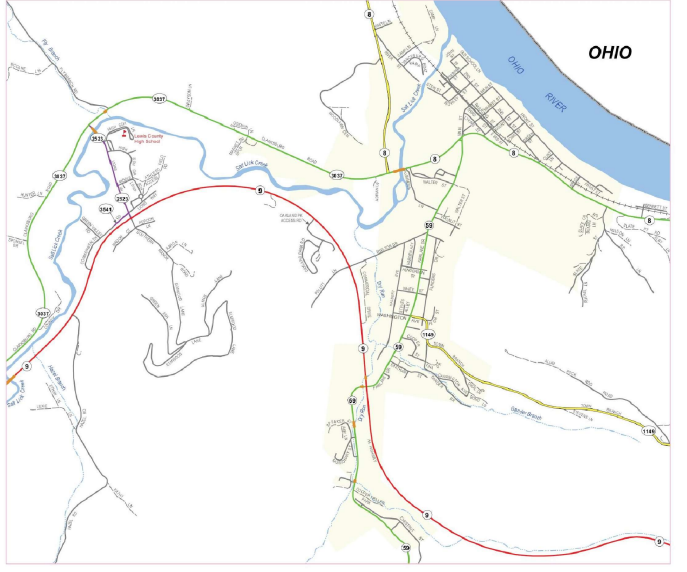


Member Kentucky Auctioneers Ass. (606) 798-2009  
 2003 KY State Champion Auctioneer (606) 301-3350

**AUCTION** (606) 798-2009



**FOR SALE** (606) 798-2009



VANCEBURG

1,000 750 0 1,500 3,000 Feet



TOLLESBORO

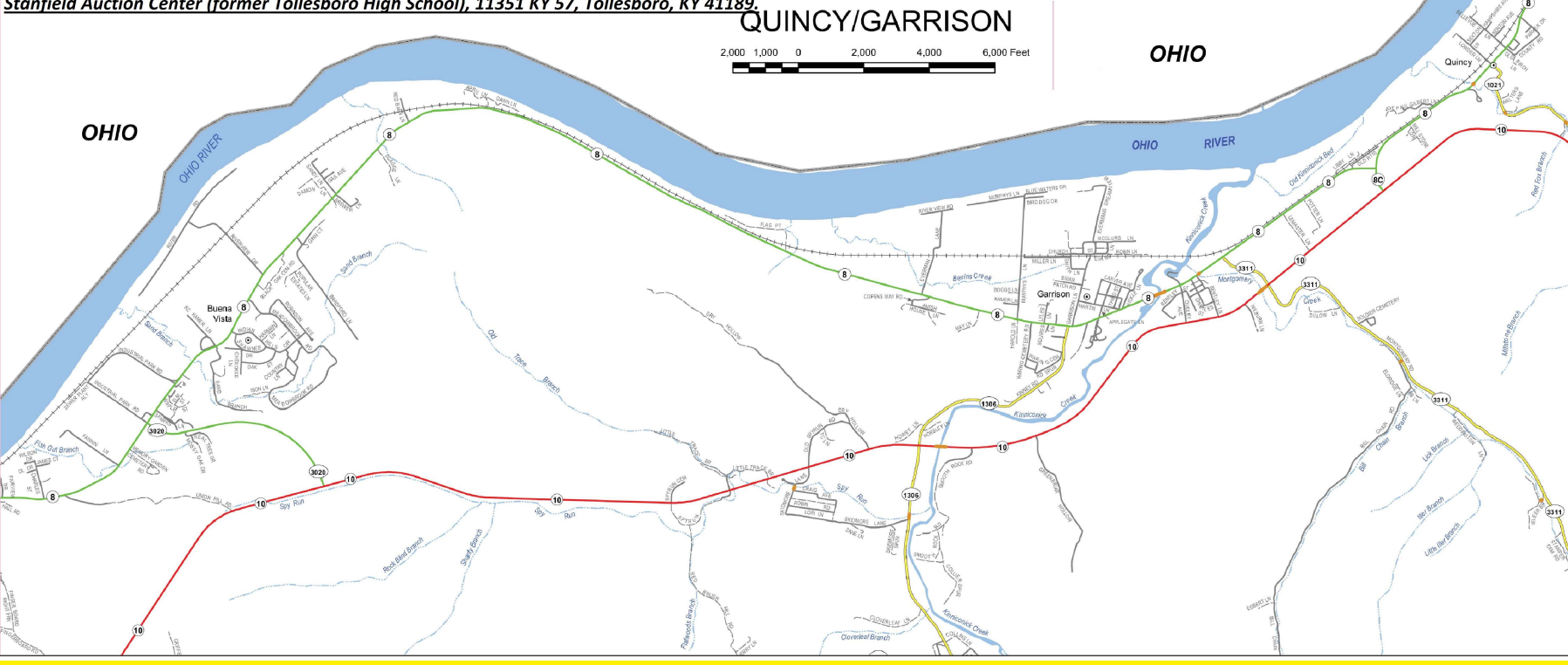
750 375 0 750 1,500 Feet



CONCORD

750 375 0 750 1,500 Feet

Stanfield Real Estate & Auction Office located at corner of KY 10 & KY 57, 11252 KY 57, Tollesboro, KY 41189.  
 Stanfield Auction Center (former Tollesboro High School), 11351 KY 57, Tollesboro, KY 41189.



QUINCY/GARRISON

2,000 1,000 0 2,000 4,000 6,000 Feet



**Craig A. STANFIELD**  
 REAL ESTATE BROKER  
 AUCTIONEER



Be sure to check out my website:  
[www.stanfieldproperty.com](http://www.stanfieldproperty.com)  
[info@stanfieldproperty.com](mailto:info@stanfieldproperty.com)  
 (606)798-2009 • (606)301-3350

