

Connelly Angus Ranch

Genetics for the Long Run
Production Sale

Tuesday, February 23, 2021

**At the Ranch in Valier, MT
Sale Starts at 1 pm**

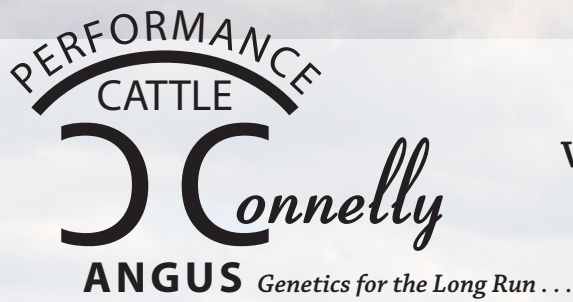


— Selling —

130 Yearling Bulls

15 Yearling Registered Heifers

1-888-423-2855 (BULL)
connelly@3rivers.net
www.connellyangus.com



1950 Dean Road
Valier, MT 59486

Don Connelly
406/ 279-3569
406/ 899-3826

Welcome to Connelly Angus!

Welcome to our 30th Annual "Genetics for the Long Run" Production Sale. This year's sale offering promises to be one of the most exciting ever. The bulls selling represent the top 49% of the calf crop. The replacement heifers we are offering are a top end selection from the heart of our herd.

As I look back on the year 2020, our cattle enjoyed a good year on grass with a few rough winter storms in the fall at weaning. They definitely had a lot more enjoyable year than the human sector! It definitely tested the cattle genetics as well as the human sector on the ranch. Our cattle have to get by on what mother nature dishes out without any supplements. This tests the fertility and longevity of your cowherd and the genetics you sell. We are very proud of the proof of this by the 40 Pathfinder cows in our program, a huge indicator of the quality of the cowherd.

When you look at all the different agriculture commodities out there, the cattle business has the most positive outlook for the future. When you study the dynamics of the industry, there are quite a few really good years ahead for the rancher to enjoy.

A high percentage of the bulls selling are calving ease bulls that will work great on heifers or cows without giving up weaning weights or performance.

The heifers selling represent top prospects in each sire group from cow families that have stood the test of time. These heifers are developed the same way we do on our own replacements to insure their future soundness and production.

Our breeding philosophy has always been centered around producing problem free females with excellent longevity that can survive and excel in a commercial rancher's environment. This can only be accomplished with females that have excellent structure, feet, superior udder and teat qualities. We believe in a moderate framed cow that milks well while holding her condition and can consistently wean off a heavy calf. In our program, we place high emphasis on fertility, carcass quality, natural thickness, maternal traits, fast growth, quiet dispositions and moderate birth weights. At Connelly Angus we have been stacking cow families with these characteristics to produce an elite cowherd that can produce a consistent and quality product. We are focusing on bloodlines that leave you with females that can bring in a good calf year after year for the long run. You cannot build a cowherd and get ahead with a high percentage of open young cows.

The bulls have been developed on a high roughage ration to grow out, NOT FATTEN. Their ration was designed for a 2.75 pound ADG. They are very athletic and should be able to cover a lot of country. All bulls will be veterinary inspected and semen tested before sale day by Dr Wade Spears, DVM.

We have decided to utilize genetic enhanced EPD's through Angus GS DNA technology on the entire sale offering again this year. You can read more about this on page 4 of this catalog.

Our sale will be broadcast on DV Auction this year for those who cannot attend the sale. We also have a limited number of phone lines to utilize if you would like.

All cattle sell with the Connelly Angus guarantee. If you are unable to attend the sale, we offer a sight unseen satisfaction guarantee on the sale offering. We invite you to come join us on Tuesday, February 23 and have lunch, visit and enjoy the day. All cattle are available for your inspection at the ranch before the sale and also on video at our website, www.connellyangus.com. If we can offer any additional information or assistance, feel free to contact us.

Sincerely,
The Connelly's

***Everyone is invited to a
Pre-Sale CAB Prime Rib Dinner
Monday, February 22, 6:00 pm
at the Ranch, North of Valier.***

Cattle are available for preview all day before dinner.



Matt, Skylar, Don, Wendy, Chantz and Mikayla

Connelly Angus Ranch

Genetics for the Long Run
Production Sale

Tuesday, February 23, 2021

At the Ranch in Valier, MT
Sale Starts at 1 pm

— 145 Angus Sell —

130 Long, Thick, Stout Yearling Bulls
(the top 48% of the calf crop)

15 Select Yearling Registered Heifers

Sale Day Phones

406-279-3569
406/ 899-3826

Videos of the sale cattle available at
www.connellyangus.com
www.DVAuctions.com

Schedule of Events

Monday, February 22, 2021

- All sale cattle & cowherd available to look over
- Be our guest for pre-sale CAB Prime Rib dinner, 6:00 pm at the Ranch

Tuesday, February 23, 2021

- Complimentary lunch will be served at 11:30 am
- Sale Time 1:00 pm

Sale Order Selling by catalog order.

Free delivery on bulls in Montana and adjoining states. Beyond at actual cost. \$50 discount per bull if you pick up within a week of sale day. Heifers delivered at cost.

All bulls are fertility tested, veterinary inspected. Entire offering tested free of known defects identified by the American Angus Association, or has no pedigree risk.

Semen Interest Connelly Angus is retaining one-third revenue sharing semen interest on every bull selling in this sale. Full possession and full salvage value sells on all bulls.

Terms and Conditions

This sale is being conducted under the suggested sale terms and conditions adopted by the American Angus Association.

Inspection: The cattle are ready for inspection at your convenience. Visitors are welcome at anytime.

Travel and Accommodations Air Travel: Great Falls is served by Delta, Horizon and Northwest Airlines. It is about a 90 minute drive to Connelly Angus. We have a local airfield for small planes in Valier and would be happy to have someone meet you if arrangements are made in advance.

Stone School Inn, Valier406/ 279-3796
Super 8 Motel, Conrad406/ 278-7676
Crossroads Inn, Shelby406/ 434-5134
Fairfield Inn, Great Falls.....406/ 454-3000
Comfort Inn, Great Falls406/ 454-2727
Lake Frances Inn, Valier.....406/ 279-3476

Volume Discounts

2 Bulls - 2% Discount, 3 Bulls - 3% Discount
4 Bulls - 4% Discount
and continuing up to 10 or more bulls - 10% Discount

- Buyers unable to attend the sale -
We offer a sight unseen satisfaction
guarantee on sale offerings

DV Auctions will be assisting those unable to attend the sale this year. Please see page 2 for details.

Bids can be phoned into auctioneer or the owners.

Announcements from the auction block take precedence over information in this catalog.

Representatives

Roger Jacobs.....Auctioneer
406/ 698-7686 or 406/ 373-6124
Kurt Kangas.....American Angus Association
661/ 706-2041
John Goggins Western Ag Reporter
406/ 698-4159 or 406/ 373-5000
Devin Murnin Western Livestock Journal
406/ 696-1502
Bill Pelton.....Bill Pelton Livestock
406/ 671-5100

Liability: Everyone attending this sale does so at his own risk and without liability on the part of the owners or their employees.

EPDs are current as of 2/4/21
Updated EPDs can be viewed at www.angus.org

Please bring this catalog to the sale!



Connolly Angus First Year Breeding Guarantee

Common Sense Ranching

At Connolly Angus we have always bred cattle realizing that the Angus female is the key to making the most out of your ranch's operation. We have focused on bloodlines and cow families that have proven bred in longevity.

We strive to breed cattle that will excel and survive in a low input environment not cattle in a artificial environment with extra supplements, creep feed and extra management. When mother nature gives you a good year, the calves will really weigh up for you. More importantly in those dry tough years if your cow herd has the right genetics, your cows can still bring in a good calf and breed back on time without those costly extra inputs. The wrong bloodlines and/or high powered, high input genetics can really cost you in those tough years if you want them to stay in your herd and avoid a high percentage of open cows. There are plenty of high input genetics out there that will cost you lots of extra dollars in the good years!

We take pride in proving to our customers the history behind the bulls they buy. You will find ratios on all the measurements we take in developing the bulls. You will find generations of cow production records behind the bulls to help aid in your selection. We believe the best genetics are found over time through a cow producing a good calf year after year through ten plus years while maintaining soundness & udder quality and proving there is actual bred in longevity. There are great financial rewards in using the right genetics.

When you buy a bull for your program without any performance ratios or cow family history, you really have no idea what you are in for. You don't know if you are improving what you already have or in for a big costly disappointment down the road.

Survival in today's ranching atmosphere allows for few mistakes. Look to add the genetics to your program that will give you the biggest returns and keep you going for the Long Run!

First Year Breeding Guarantee

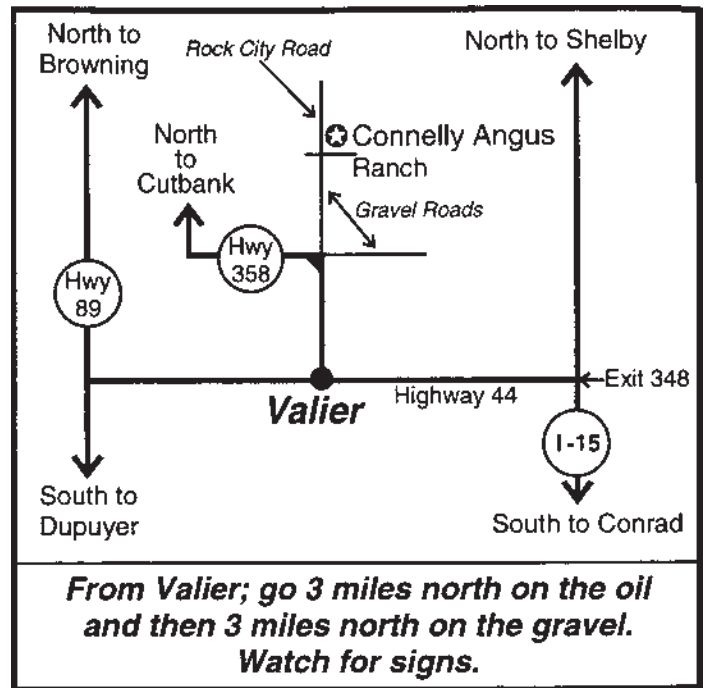
All bulls selling for \$3000 or more will be covered 50% by Connolly Angus, if they are injured during their first breeding season and not able to return to service during that first breeding season. Breeding season is defined as the 90 day period following the first turnout of the bulls.

50% of the value of the injured bull, minus one-half salvage value, will be given as credit in a future sale or toward a replacement bull if one is available. Salvage value, if any, will be split equally between Connolly Angus and the buyer. All injured bulls must be diagnosed by a veterinarian. Please notify us as soon as possible should injury occur and prior to the injured bull being sold for salvage. All claims must be made by September 1, 2021.

Example 1: A \$6000 bull is injured, a credit of \$3000 minus one-half any salvage value will be given to the buyer.

Example 2: A \$4000 bull is injured, a credit of \$2000 minus one-half any salvage value will be given to the buyer.

Example 3: A \$2500 bull is injured, no credit is given. Buyer retains all salvage value.



DVAuction

Watch & Bid Online for FREE!

Can't make the sale? Busy during the sale?
Let DVAuction bring the sale to you! Let DVAuction represent your bid!

Visit www.dvauction.com and Register!

It's as easy as 1, 2, 3...

1. Create and account at www.dvauction.com under the "create new account" tab
2. Apply for bidding by clicking "apply for bidding" in the upper left corner of your screen, at last 24 hours prior to the auction
3. Tune into the sale and make your purchases! *High Speed Internet Access Required

For General Questions Please Contact Our Office:
(402) 316-5460 or support@dvauction.com

Visitors are always
welcome to stop by
and see the cattle
at any time.

Give us a call and we'll
turn on the coffee pot!



How do you Ballyhoo?
Ballyhoo
PRINTING & DESIGN
BallyhooPrinting.com
406 • 538 • 7988 Lewistown, MT



Driving the science of better breeding

There's little room for error in the cattle business. Producers need the most advanced information to make smart selection decisions, and Angus Genetics Inc. (AGI) provides it through genomic-enhanced expected progeny differences (GE-EPDs).

GE-EPDs have become the industry standard for herd improvement, building on decades of science-backed genetic evaluation tools originated and maintained through the American Angus Association®, home to the largest and ever-growing single-breed beef cattle database.

EPDs that traditionally contained all pedigree, performance and progeny information now also include results from available genomic, or DNA, tests. Breeders who use genomic technology give buyers access to AGI-generated GE-EPDs that provide:

Increased predictability and decreased risk for young and unproven animals due to enhanced accuracy of EPDs

Better characterization of genetics for difficult-to-measure performance traits (such as carcass traits, maternal traits and feed efficiency)

The ability to make more rapid progress for traits that are important to you, due to:

- more accurate selection
- easier identification of genetic outliers
- the ability to propagate young animals with confidence earlier in their lives

In fact, GE-EPDs on unproven animals have the same amount of accuracy as if they had recorded 10-36 calves, depending on the trait. That's valuable insight, offered regularly through the breed's weekly national cattle evaluation.

Trait	Progeny Equivalent	Trait	Progeny Equivalent
Calving Ease Direct	26	Heifer Pregnancy	17
Birth Weight	23	Calving Ease Maternal	20
Weaning Weight	27	Milk	36
Yearling Weight	23	Mature Weight	15
Dry Matter Intake	12	Mature Height	9
Scrotal Circumference	15	Carcass Weight	15
Docility	12	Yearling Height	17
Claw Set	10	Carcass Marbling	11
Foot Angle	10	Carcass Ribeye	17
		Carcass Fat	14

How do you know if EPDs are genomic-enhanced?

Ask your breeder, refer to the registration paper, or look for the AGI GE-EPD logo, Angus GS™ powered by partner Neogen GeneSeek or the HD50k by partner Zoetis. These images indicate animals for which low-density or high-density genomic testing has been conducted and incorporated by AGI into GE-EPDs



www.angus.org

Reference Sire

CAR EFFICIENT 534

15170660 # calved - 01/22/05

CONNEALY FOREFRONT#
K C F BENNETT EFFICIENT
K C F BL MISS 5522 E152

CONNEALY FRONTLINE#
EILEEN HEARTLAND CONANGA64
EMULATION N BAR 5522#
BEELINE ROYALTY C9

CAR DUKE 104#
CAR MISS SUSIE 308#
C A R MISS TRENDY 449

CAR TRACKER 904#
C A R MISS RAINDANCER 421#
NEW TREND 049 C A R
C A R LADY SUPER X 135

Birth Wt	70
205 Wt	724
NR	
115	
YR	
124	

CED EPD	BW EPD	WW EPD	Milk EPD	YW EPD	SC EPD		
+9	-1.1	+50	+22	+95	+1.53		
Acc .88	.96	.95	.90	.93	.92		
Marb	RE	Fat	\$M	\$W	\$F	\$G	\$B
+64	+21	+0.25	+58	+59	+89	+45	+134
Acc .77	.73	.76					



He was the \$18,500 high selling bull out of a CAR Duke 104 daughter in our 2006 production sale to Knoll Crest Farms and Baldrige Brothers. A 1/3 interest sold for \$35,000 in Baldrige dispersal to put a \$105,000 value on CAR Efficient 534. Efficient 534 is an excellent outcross calving ease sire with moderate mature size whose progeny perform with added thickness, fleshing ability and carcass values. We are very impressed with the quality of the Efficient daughters and their excellent dispositions. Sons are topping sales across the country out of his daughters.

Reference Sire

CAR CHINNOOK 786

15810174 # calved - 01/23/07

A A R WINDY RIDGE 362
A A R REALLY WINDY 1205#
A A R LADY KELTON 2170

WINDY RIDGE COMMODORE#
A A R FERNS PRIDE 1170#
WINDY RIDGE COMMODORE#
A A R LADY KELTON 66

CAR TRACKER 904#
CAR MISS MARIE 5109
CAR MARIE 0108

C A R TRACKER 614
LADY NEW TREND 027 C A R
C A R FERDINAND 832
C A R REAL LADY 6108#

Birth Wt	68
205 Wt	704
NR	
111	
YR	
108	

CED EPD	BW EPD	WW EPD	Milk EPD	YW EPD	SC EPD		
+13	+0.6	+46	+28	+78	+1.69		
Acc .78	.91	.89	.80	.85	.85		
Marb	RE	Fat	\$M	\$W	\$F	\$G	\$B
+40	+47	+0.16	+51	+51	+53	+38	+91
Acc .44	.46	.45					



CAR Chinook 786 was the \$30,000 high selling bull in our 2008 sale to Darwin Peckham in South Dakota. His dam is a full sister to the \$14,500 high selling bull in our 2007 sale. When you study this bull's cow family's production records, fertility, performance and incredible longevity; he shows tremendous potential to be a breed changer. He is a proven calving ease bull with CED of +13 who stamps his progeny with his likeness. His daughters are moderate statured, big ribbed, are excellent mothers, have super udder and teat quality and have quiet dispositions. They are fertile, breed back on time and hold their condition well in a low input environment. An outcross bull to use on your heifers and realize the value through bred in performance, carcass, fertility and bred in longevity. Semen available through Genex.

Reference Sire

LAR JUNEANU 796Y

17203247 calved - 02/14/11

O C C JUNEANU 807J#
KOUPL JUNEANU 797#
KOUPLS ELBA 187

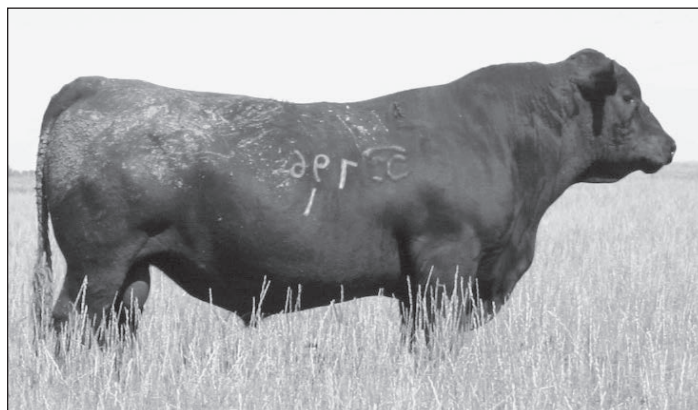
O C C EMBLAZON 854E#
O C C DIXIE ERICA 903E
O C C GLORY 950G#
BEEFLAND ELBA 7119

LAR ALLIANCE 64L#
QUEEN ELBA 763U LAR
QUEEN ELBA 525R LAR

SITZ ALLIANCE 7617#
EILENMERE DIAMOND 161 L A R
MARCYS BREAKSTONE 125
QUEEN ELBA 5242 L A R#

Birth Wt	86
205 Wt	767
NR	
121	
YR	
116	

CED EPD	BW EPD	WW EPD	Milk EPD	YW EPD	SC EPD		
-1	+3.1	+85	+23	+146	+1.97		
Acc .42	.82	.78	.53	.73	.77		
Marb	RE	Fat	\$M	\$W	\$F	\$G	\$B
+15	+55	-0.21	+45	+75	+101	+31	+132
Acc .40	.41	.41					



Pictured as a 2 year old after breeding season. An impressive moderate framed massive bull with worlds of substance and muscle. He will add pounds to your weaning weights without adding frame. We are excited about the future of this herdsire in our program. His daughters that calved are moderate framed, easy keeping, have excellent udder & teats and are really good mothers. He is in the top 1% of the breed for WW, YW, \$F and carcass weights. Juneau is the only bull that gives you that extra payweight at weaning and a moderate sized cow that requires less inputs. A true ranchers bull! This will be the last sons to sell!

Reference Sire

CAR REMARKABLE 640

18687704 calved - 01/20/16

RITO 707 OF IDEAL 3407 7075
S A V RESOURCE 1441#
 S A V BLACKCAP MAY 4136

R R RITO 707#
 IDEAL 3407 OF 1418 076
 S A V 8180 TRAVELER 004#
 S A V MAY 2397#

CAR EFFICIENT 534#
CAR MISS MARIE 769#
 CAR MISS MARIE 5164

K C F BENNETT EFFICIENT
 CAR MISS SUSIE 308#
 E 7 GURU 1375
 CAR MISS MARIE 242

Birth Wt	82
205 Wt	205
	677
	NR
	108
	YR
	114

CED EPD	BW EPD	WW EPD	Milk EPD	YW EPD	SC EPD		
+9	+1.9	+49	+22	+98	+1.87		
Acc .44	.76	.71	.37	.61	.66		
Marb	RE	Fat	\$M	\$W	\$F	\$G	\$B
+4.4	+4.3	+0.30	+53	+41	+65	+39	+104
Acc .40	.41	.39					



Dam is a beautifully made 14 year old Pathfinder cow that never misses. Outstanding set of sons from this high marbling Resource son that was high seller of our 2017 production sale. First daughters in production are phenominal in their makeup and the keeping kind.

Reference Sire

CAR DURABULL LINE 575

18354613 calved - 01/22/15

CAR DUKE 865
CAR 865 DUKE 3200
 CAR LADY DIANA 503

CAR DUKE 504
 CAR MISS MARIE 300
 CAR TRACKER 904#
 CAR LADY DIANA 968

CAR CHINNOOK1119
CAR MISS MARIE 3184#
 CAR MISS MARIE 110

CAR CHINNOOK 786#
 CAR MARIE 9139
 CAR DUKE 865
 CAR MISS MARIE 645

Birth Wt	67
205 Wt	205
	749
	NR
	119
	YR
	107

CED EPD	BW EPD	WW EPD	Milk EPD	YW EPD	SC EPD		
+13	-1.1	+45	+30	+75	+1.75		
Acc .40	.71	.65	.26	.54	.62		
Marb	RE	Fat	\$M	\$W	\$F	\$G	\$B
+3.9	+1.1	+0.069	+55	+57	+60	+29	+89
Acc .23	.27	.21					



We retained this outstanding bull from our 2015 calf crop. He ties up all of our best cow families and traces to our foundation 449 cow 16 times. Outcross calving ease genetics with excellent weaning weights and unbeatable maternal attributes. First daughters in production are living up to our expectations.

Reference Sire

CAR CHA CHING 528

18330751 calved - 01/17/15

SITZ DASH 10277#
BARSTOW CASH#
 BARSTOW QUEEN W16

SITZ UPWARD 307R#
 SITZ EVERELDA ENTENSE 2665
 S A V FINAL ANSWER 0035#
 RCA QUEEN R42

CAR PRIMETRACKER 308#
CAR MISS MIKAYLA 510#
 CAR MISS MIKAYLA 209

CAR TRACKER 904#
 CAR MISS LINDA 033
 MC BEE WMR SUPER X 745#
 C A R LADY 011 RITO 280

Birth Wt	77
205 Wt	205
	749
	NR
	119
	YR
	108

CED EPD	BW EPD	WW EPD	Milk EPD	YW EPD	SC EPD		
+10	+0.4	+62	+17	+102	+1.03		
Acc .48	.74	.69	.41	.62	.68		
Marb	RE	Fat	\$M	\$W	\$F	\$G	\$B
+1.4	+5.1	+0.043	+61	+59	+82	+25	+107
Acc .37	.38	.34					



Calving ease with extra length, added rib and heavy muscling from one of the best cows on the ranch! She is a 16 year old pathfinder. First daughters in production are impressive and are indexing 108 on their calves.

Reference Sire

CAR REMARKABLE 821

19292977

calved - 01/17/18

S A V RESOURCE 1441#
CAR REMARKABLE 640
 CAR MISS MARIE 769#

RITO 707 OF IDEAL 3407 7075
 S A V BLACKCAP MAY 4136
 CAR EFFICIENT 534#
 CAR MISS MARIE 5164

CAR CEDAR RIDGE 156
CAR MISS HEATHER 5167#
 CAR MISS HEATHER 2197

COLE CREEK CEDAR RIDGE 1V#
 CAR MISS LUCY 720
 CAR JUSTICE 8112
 CAR MISS HEATHER 999

Birth Wt	74
205 Wt	205
	753
	NR
	117
	117
	YR
	117

CED EPD	BW EPD	WW EPD	Milk EPD	YW EPD	SC EPD		
+12	+1.2	+75	+20	+125	+2.72		
Acc .42	.69	.62	.29	.51	.59		
Marb	RE	Fat	\$M	\$W	\$F	\$G	\$B
+25	+.54	+.048	+70	+73	+91	+30	+121
Acc .36	.37	.35					



Calving ease, performance, beef phenotype, fertility and structural correctness with an outcross pedigree for most producers. Pathfinder dam from a herd bull producing cow family that is strong in the basic fundamentals including great feet, clean sheath, robust body dimension and exceptional thickness plus ideal Angus breed character. Outstanding docile sire group that will impress. Proudly co-owned with Adams Angus & Christensen Cattle Co. Semen available through Universal Semen Sales.

Reference Sire

CAR HICKORY 547

18297718

calved - 01/19/15

COLE CREEK CEDAR RIDGE 1V#
CAR CEDAR RIDGE 156
 CAR MISS LUCY 720

COLE CREEK BLACK CEDAR 46P#
 COLE CREEK CLOVANADA 49S#
 H A IMAGE MAKER 0415#
 CAR MISS LUCY 515#

CAR CHINOOK 786#
CAR MISS MARIE 3157
 CAR MISS MARIE 943

A A R REALLY WINDY 1205#
 CAR MISS MARIE 5109
 CAR EFFICIENT 648
 CAR MISS MARIE 699

Birth Wt	65
205 Wt	745
	NR
	119
	YR
	110

CED EPD	BW EPD	WW EPD	Milk EPD	YW EPD	SC EPD		
+11	+0.4	+70	+13	+112	+1.81		
Acc .47	.69	.63	.31	.55	.61		
Marb	RE	Fat	\$M	\$W	\$F	\$G	\$B
+27	+.34	+.004	+44	+59	+72	+32	+104
Acc .30	.32	.28					



Hickory was chosen out of our 2015 calf crop to replace his sire. His dam is an intensely linebred female that traces to foundation 449 cow 9 times. Excellent calving ease and performance in a moderate framed package. This bull will be used heavily in our program in the future. First daughters in production are indexing 105 on their progeny.

Reference Sire

CAR MOTIVE 416

17979746

calved - 01/14/14

HF KODIAK 5R
SOO LINE MOTIVE 9016#
 TLA BEAUTY 5R

SANDY BAR ADVANTAGE 43M
 WILBAR RUBY 955N
 RR 7407 RAINMAKER 2154
 TERRENE BEAUTY 35F

CAR PRIMETRACKER 308#
CAR PRIMROSE LADY 691
 CAR PRIMROSE LADY 9118

CAR TRACKER 904#
 CAR MISS LINDA 033
 C U FERDINAND 9655
 C A R PRIMROSE LADY 723

Birth Wt	75
205 Wt	703
	NR
	111
	YR
	113

CED EPD	BW EPD	WW EPD	Milk EPD	YW EPD	SC EPD		
+6	+1.5	+44	+17	+79	+0.77		
Acc .46	.70	.64	.39	.58	.63		
Marb	RE	Fat	\$M	\$W	\$F	\$G	\$B
-.08	+.41	+.031	+27	+32	+73	+14	+87
Acc .35	.36	.33					



Record selling bull of our 2015 sale. Tremendously easy keeping cow family with super udder quality and lots of bred in longevity. This calving ease bull will reduce frame but add extra capacity and rib with heavy muscle expression. This line of cattle will excel in a low input environment. We are really impressed with the quality of his daughters so far.

Reference Sire

JACS RARE FIND 6503

19026387 calved - 07/27/16

BASIN PAYWEIGHT 0065#
BASIN PAYWEIGHT 1682#
 21AR O LASS 7017

A A R TEN X 7008 S A#
CRAZY K BLACKCAP 4297
 FOX RUN BLACKCAP 7141

VERMILION PAYWEIGHT J847#
 BASIN LUCY 3829
 HARB PENDLETON 765 J H#
 21AR O LASS F24A

MYTTY IN FOCUS#
 A A R LADY KELTON 5551#
 G A R PREDESTINED#

Birth Wt	na
205 Wt	na
NR	na
YR	na



CED EPD	BW EPD	WW EPD	Milk EPD	YW EPD	SC EPD		
+11	+0.8	+83	+27	+141	+1.51		
Acc .53	.81	.71	.35	.56	.53		
Marb	RE	Fat	\$M	\$W	\$F	\$G	\$B
+0.98	+0.27	+0.049	+73	+90	+94	+60	+153
Acc .41	.41	.39					

Rare Find is a AI bull we sampled because of reports of how impressive his progeny were. We are very happy with the results. They have an excellent phenotype and performed quite well. Looking forward to getting daughters into production.

Reference Sire

BARTELS CONSENSUS 3809 649

+18673885 calved - 02/20/16

KMK ALLIANCE 6595 187#
CONNEALY CONSENSUS#
 BLINDA OF CONANGA 004

G A R GRID MAKER#
ELISHA OF CONANGA 868 988
 ELIGENCE PLUS OF CONANGA

SITZ ALLIANCE 6595#
 G A R EXT 916#
 RITO 616 OF 4B20 6807#
 BLEND OF CONANGA 129

G D A R TRAVELER 044#
 G A R PRECISION 2536
 TC DIVIDEND 963#
 EURA CAP OF CONANGA

Birth Wt	85
205 Wt	748
NR	ET
YR	ET



CED EPD	BW EPD	WW EPD	Milk EPD	YW EPD	SC EPD		
+7	+0.6	+58	+15	+99	+0.96		
Acc .52	.74	.69	.40	.59	.64		
Marb	RE	Fat	\$M	\$W	\$F	\$G	\$B
+0.09	+0.84	-0.034	+61	+52	+57	+33	+90
Acc .41	.42	.40					

This own son of Consensus is a great addition to our program. Lots of calving ease, eye appeal and performance from this sire that had a 19 inch ribeye as a yearling. First daughters calved are doing a great job and have great mothering ability and look very promising.

Reference Sire

BARTELS IMPRESSION C116

+18706536 calved - 08/11/15

CONNEALY REFLECTION#
CONNEALY IMPRESSION#
 PEARL PAMMY OF CONANGA 194

CONNEALY CONSENSUS#
K C F MISS CONSENSUS Y300
 K C F MISS 589 M359#

BON VIEW NEW DESIGN 878#
 HAPPY GRILL OF CONANGA 6260
 VERMILION DATELINE 7078#
 PEARL JAM OF CONANGA 6114

KMK ALLIANCE 6595 187#
 BLINDA OF CONANGA 004
 JAUER 353 TRAVELER 589 27#
 K C F MISS FRONTLINE H219

Birth Wt	68
205 Wt	498
NR	ET
YR	ET



CED EPD	BW EPD	WW EPD	Milk EPD	YW EPD	SC EPD		
+8	+0.6	+66	+12	+113	+1.38		
Acc .39	.67	.61	.36	.54	.56		
Marb	RE	Fat	\$M	\$W	\$F	\$G	\$B
+0.27	+0.62	-0.029	+55	+55	+93	+38	+131
Acc .38	.39	.35					

A tank of a bull with outcross genetics and a great cow behind him siring a top set of calves.

Reference Sire **CONNEALY LEGENDARY 644L**

+18534952 calved - 01/23/16

MCC DAYBREAK#
QUAKER HILL RAMPAGE 0A36#
 QHF BLACKCAP 6E2 OF4V16 4355

BOYD NEW DAY 8005#

MORGANS DIRECTION 111 9901# C A FUTURE DIRECTION 5321#
JAZZED OF CONANGA 4660
 JAZE OF CONANGA 234 CONNEALY LEAD ON#

Birth Wt	na
205 Wt	na
NR	ET
YR	ET

CED EPD	BW EPD	WW EPD	Milk EPD	YW EPD	SC EPD		
+10	-0.9	+68	+16	+112	+0.64		
Acc .84	.94	.92	.42	.87	.86		
Marb	RE	Fat	\$M	\$W	\$F	\$G	\$B
+1.10	+0.97	-0.026	+59	+65	+89	+81	+170
Acc .62	.59	.62					



Calving ease, performance and elite carcass genetics in this record selling bull. An outstanding group of sons sell!

Reference Sire **CAR MOTIVE 423**

17979753 calved - 01/15/14

HF KODIAK 5R
SOO LINE MOTIVE 9016#
 TLA BEAUTY 5R

SANDY BAR ADVANTAGE 43M
 WILBAR RUBY 955N
 RR 7407 RAINMAKER 2154
 TERRLENE BEAUTY 35F

CAR DUKE 104#
CAR MISS HEATHER 446#
 CAR HEATHER 020#

CAR TRACKER 904#
 C A R MISS RAINDANCER 421#
 C A R TRACKER 614
 C A R HEATHER 8102

Birth Wt	78
205 Wt	691
NR	109
YR	109
	106

CED EPD	BW EPD	WW EPD	Milk EPD	YW EPD	SC EPD		
+0	+0.7	+50	+24	+92	+0.06		
Acc .44	.75	.70	.47	.64	.67		
Marb	RE	Fat	\$M	\$W	\$F	\$G	\$B
+0.71	+0.33	+0.039	+38	+48	+87	+49	+136
Acc .36	.38	.35					



Dam is a 15 year old 2nd generation pathfinder. This bull sold in our 2015 sale to Larry Coleman. Lots of bred in longevity in this good stout Motive son. His daughters are making excellent mothers and the kind we really like.

Reference Sire **GDAR BUTKUS 5217**

18138445 calved - 02/17/15

S A V FINAL ANSWER 0035#
SANDPOINT BUTKUS X797#
 G A R GRID MAKER 4603

SITZ TRAVELER 8180#
 S A V EMULOUS 8145
 G A R GRID MAKER#
 G A R NEW DESIGN 741

GDAR GAME DAY 449#
GDAR PAMELA EVER 2115#
 GDAR PAMELA EVER 0263#

BOYD NEW DAY 8005#
 G D A R MISS WIX 474#
 SITZ UPWARD 307R#
 GDAR PAMELA EVER 3442

Birth Wt	84
205 Wt	755
NR	116
YR	116
	110

CED EPD	BW EPD	WW EPD	Milk EPD	YW EPD	SC EPD		
+10	+1.3	+77	+28	+133	+0.66		
Acc .39	.65	.59	.37	.50	.56		
Marb	RE	Fat	\$M	\$W	\$F	\$G	\$B
+0.66	+0.74	+0.030	+94	+87	+109	+53	+161
Acc .38	.39	.36					

5217 was our pick of 2016 GDAR sale. His dam is an impressive 2nd generation pathfinder. This bull has done a nice job for us and offers new bloodlines for our customers.

Reference Sire **HARRISON TRUE GRIT 4253**

17908072 calved - 02/27/14

SITZ ALLIANCE 7544#
HILLTOP TRUE GRIT 9202#
 HILLTOP CANDY LASS 713

SITZ ALLIANCE 6595#
 SITZ PRIDE 2561
 ER BUSHWACKER 06P1
 HILLTOP CANDY LASS T9

SITZ ONWARD 454S
HARRISON MISS HILDA 9097
 CAR MISS HILDA 6102

CONNEALY ONWARD#
 SITZ ELSIEMERE 22P
 CAR TRACKER 321
 CAR MISS HILDA 240#

Birth Wt	84
205 Wt	665
NR	103
YR	103
	na

CED EPD	BW EPD	WW EPD	Milk EPD	YW EPD	SC EPD		
+7	+0.4	+71	+18	+117	+2.05		
Acc .53	.77	.73	.37	.66	.70		
Marb	RE	Fat	\$M	\$W	\$F	\$G	\$B
+0.24	+0.14	+0.049	+51	+68	+74	+24	+98
Acc .34	.36	.32					

This bull was our pick out of the 2015 Treasure bull test. He has developed into an impressive herdbull with a balanced set of numbers & excellent feet. He is a true calving ease bull with tremendous weaning and yearling growth and big scrotals.

Reference Sire

CAR ICEBERG 232

14246472	calved - 01/26/02	Birth Wt
J A R COOL HAND LUKE	J A R LUKE Y1	80
LOST LAKE ICEBERG 3438#	J A R BLACKBIRD LADY M D S36	205 Wt
ANNE OF L L R 1123	F A R MUSCLES 521	701
	HIGHWOOD CORNHUSKER ANNE	NR
C A R TRACKER 401	Q A S TRAVELER 23-4#	114
C A R MISS JOSEPHINE 726	LADY OSCAR 937 C A R#	YR
C A R MISS REAL RITO 3148	2100 RITO 011 C A R	na
	LADY SCORPIO 555 C A R	

CED EPD	BW EPD	WW EPD	Milk EPD	YW EPD	SC EPD		
+2	+2.9	+32	+26	+73	+1.20		
Acc .35	.69	.64	.46	.58	.54		
Marb	RE	Fat	\$M	\$W	\$F	\$G	\$B
+0.31	+0.34	+0.003	+35	+22	+97	+34	+131
Acc .27	.33	.25					

This bull was one of the best indexing bulls in the 2003 Midland Bull Test. We went back and used him again because of the fantastic daughters he left us. Excellent sire group for those looking for an outcross.

Reference Sire

CAR TRUE GRIT 8141

19321432	calved - 02/04/18	Birth Wt
HILLTOP TRUE GRIT 9202#	SITZ ALLIANCE 7544#	68
HARRISON TRUE GRIT 4253	HILLTOP CANDY LASS 713	205 Wt
HARRISON MISS HILDA 9097	SITZ ONWARD 4545	648
	CAR MISS HILDA 6102	NR
CAR JUNEAU 3236	LAR JUNEANU 796Y	100
CAR MISS MARIE 582	CAR MISS DIANA 0101#	YR
CAR MISS MARIE 358#	E 7 GURU 1375	102
	CAR MARIE 0108	

CED EPD	BW EPD	WW EPD	Milk EPD	YW EPD	SC EPD		
+7	+1.1	+59	+25	+101	+2.62		
Acc .34	.54	.47	.27	.42	.50		
Marb	RE	Fat	\$M	\$W	\$F	\$G	\$B
+0.25	+0.35	-0.015	+55	+63	+57	+32	+90
Acc .30	.31	.26					

A True Grit son we kept as a clean up bull on heifers. Lots of proven bred in long term longevity in the cow family behind him.

Reference Sire

CAR BISMARCK 8190

19330111	calved - 02/13/18	Birth Wt
S A V BISMARCK 5682#	G A R GRID MAKER#	74
CAR BISMARCK 371	S A V ABIGALE 0451	205 Wt
CAR MISS VIKING 9191	CAR TRACKER 219	732
	CAR MISS VIKING 5145	NR
R B ACTIVE DUTY 010#	LCC NEW STANDARD#	113
CAR MISS MIKAYLA 530#	B A LADY 6807 305	YR
CAR MISS MIKAYLA 179#	CAR 504 DUKE 898	109
	CAR MISS MIKAYLA 346	

CED EPD	BW EPD	WW EPD	Milk EPD	YW EPD	SC EPD		
+11	-0.4	+56	+25	+94	+2.11		
Acc .35	.55	.48	.30	.43	.51		
Marb	RE	Fat	\$M	\$W	\$F	\$G	\$B
+0.21	+0.37	+0.043	+57	+63	+53	+26	+79
Acc .32	.33	.28					

We retained 8190 out of our 2018 calf crop because of his outstanding dam and his overall completeness as a herdbull. Dam is outstanding 2nd generation pathfinder with 4 @ 114 weaning. Used as clean up on heifers. We are excited about the future of this young herdbull in our program.

Reference Sire

CONNEALY MENTOR 7374

15832714	calved - 01/31/07	Birth Wt
G A R PRECISION 1680#	TEHAMA BANDO 155#	205 Wt
G A R RETAIL PRODUCT#	9J9 G A R 856	NR
G A R EXT 4927+	N BAR EMULATION EXT#*	YR
	G A R TRAVELER 641	
JAUER 353 TRAVELER 589 27#	JAUER 7111 TRAVELER 353 719	
EXECUTA OF CONANGA 939#	JAUER 6807 TRAVELER 27 085	
EXEC OF CONANGA 6940#	V F VENTURE FORWARD#	
	CONNEALY MAX 940	

CED EPD	BW EPD	WW EPD	Milk EPD	YW EPD	SC EPD		
+7	+1.4	+51	+21	+100	+1.53		
Acc .80	.96	.95	.90	.93	.91		
Marb	RE	Fat	\$M	\$W	\$F	\$G	\$B
+0.68	+0.73	+0.016	+57	+56	+90	+26	+145
Acc .70	.67	.70					

We went back and used this bull again because of the outstanding daughters we have in production out of him. These cattle work really well in our environment. Outstanding outcross sire group selling!

Reference Sire

FOOS REVOLUTION 243

18961495	calved - 01/30/17	Birth Wt
CANDOLIER FOREVER 376#	FOREVER OF WYE#	85
SVR REVOLUTION 4129	BARB 157 FOREVER E C	205 Wt
S C C ENCHANTRESS 3F1 X412	EMULATION N BAR 5522#	651
	N BAR ENCHANTRESS 4908#	NR
CROOK MT REALLY WINDY 8834	CROOK MT REALLY WINDY 141#	101
FOOS HAZEL 243	BLACKBIRD 604 OF CROOK MT	YR
N F HAZEL 7461-8#	CROOK MT REALLY WINDY 104	103
	N F HAZEL 74601	

CED EPD	BW EPD	WW EPD	Milk EPD	YW EPD	SC EPD		
+11	-1.1	+28	+20	+45	+0.95		
Acc .40	.69	.63	.25	.52	.57		
Marb	RE	Fat	\$M	\$W	\$F	\$G	\$B
+0.09	+0.16	+0.032	+57	+33	+51	+19	+70
Acc .28	.30	.25					

This Revolution son was our pick of the 2017 Foos production sale. He was used as a clean up bull on heifers the first year. Old line foundation proven genetics. Candolier 376, Emulation 5522 and a double shot of Windy 141. He adds tremendous length and style to his progeny. His progeny have a lot more performance than his EPDs indicate. You will like this powerful sire group when you see them.

Reference Sire

PINE COULEE CAPITALIST F339

19307349	calved - 02/08/18	Birth Wt
CONNEALY CAPITALIST 028#	S A V FINAL ANSWER 0035#	80
LD CAPITALIST 316	PRIDES PITA OF CONANGA 8821	205 Wt
LD DIXIE ERICA 2053	C A FUTURE DIRECTION 5321#	750
	LD DIXIE ERICA OAR 0853	NR
PINE COULEE POWERHOUSE W1A	S A V NET WORTH 4200#	100
PINE COULEE BLACKCAP Y1#	VF 2031 BLKCP 0046 OF 878	YR
PINE COULEE BLACKCAP G 3Z71W	LEACHMAN RIGHT TIME#	100
	VT 6807 TRAVELER R43	

CED EPD	BW EPD	WW EPD	Milk EPD	YW EPD	SC EPD		
+9	+1.2	+54	+29	+92	+0.69		
Acc .39	.58	.51	.34	.43	.42		
Marb	RE	Fat	\$M	\$W	\$F	\$G	\$B
+0.42	+0.36	+0.036	+52	+62	+83	+36	+119
Acc .37	.37	.33					

F339 was our pick of the 2019 Pine Coulee production sale. Used as clean up bull on heifers. Dam is 2nd generation pathfinder.

Reference Sire **DIAMOND CAPITALIST B011**

+18037232 calved - 03/19/14

S A V FINAL ANSWER 0035#	SITZ TRAVELER 8180#	Birth Wt	90
CONNEALY CAPITALIST 028#	S A V EMULOUS 8145	205 Wt	205
PRIDES PITA OF CONANGA 882	C R A BEXTOR 872 5205 608#		736
	PRIDES TRAV OF CONANGA 6499		NR
			ET
DIAMOND PAYWEIGHT 738N	VERMILION PAYWEIGHT J847#		YR
DIAMOND BLACK LADY 7206#	DIAMOND TROJAN ERICA G272		ET
DIAMOND BLACK LADY M281	BASIN MAX 602C#		
	BEAR CLAW B RAINMAKER 8807#		

CED EPD	BW EPD	WW EPD	Milk EPD	YW EPD	SC EPD		
+8	+1.0	+49	+19	+87	+2.04		
Acc .43	.71	.65	.44	.48	.50		
Marb	RE	Fat	\$M	\$W	\$F	\$G	\$B
+4.5	+3.8	+0.12	+50	+43	+78	+40	+118
Acc .41	.41	.37					

Reference Sire **B BAR HOMESTRETCH 3047**

18823242 calved - 02/28/17

CROOK MT REALLY WINDY 141#	A A R REALLY WINDY 1205#	Birth Wt	92
B BAR WINDY 79	REVOLUTION 155 OF CROOK MT	205 Wt	205
B BAR LADY JEWEL 116#	RA JOE HERO		848
	B BAR LADY JEWEL 884		NR
			114
SITZ RLS ALLIANCE 7164	SITZ ALLIANCE 6595#		YR
B BAR QUEEN 304#	SITZ RLS EISA EVERGREEN 4451#		113
B BAR QUEEN 557#	S A V BUSHWACKER 3119#		
	B BAR QUEEN TIME ET 4014		

CED EPD	BW EPD	WW EPD	Milk EPD	YW EPD	SC EPD		
+9	+0.4	+53	+34	+92	+1.12		
Acc .31	.62	.57	.21	.50	.53		
Marb	RE	Fat	\$M	\$W	\$F	\$G	\$B
-.01	+5.1	+0.16	+68	+65	+75	+20	+95
Acc .20	.26	.22					

Homestretch was our pick and the high selling bull of the 2018 Lunds B Bar production sale. His dam is an outstanding 2nd generation pathfinder cow in their program. This bull will add length to his progeny. New outcross genetics for our customers. First daughters calved have excellent udder quality and are good mothers.

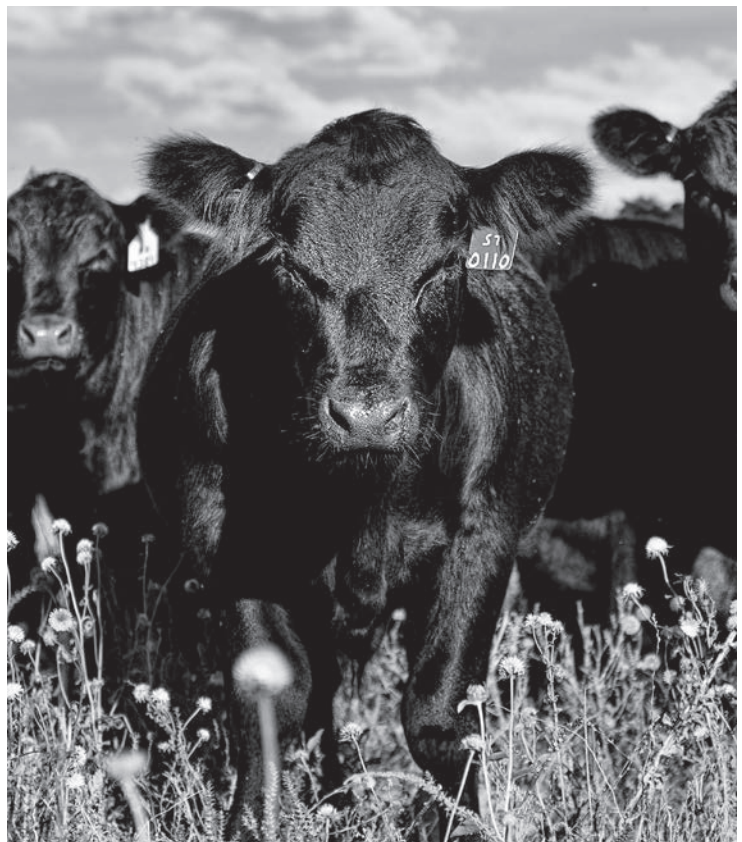
Reference Sire **CAR BUSHWACKER 618**

18633467 calved - 01/17/16

B C C BUSHWACKER 41-93#	PARAMONT AMBUSH 2172#	Birth Wt	64
CAR BUSHWACKER 601	R C ANITA T BANDO 918903	205 Wt	205
C A R MISS RAINDANCER 421#	G D A R RAINMAKER 340#		678
	C A R LADY 011 RITO 245		NR
			108
CARTANK 226	CAR TRACKER 904#		YR
CAR MISS BRENDA 422	C A R IDEAL PRIME LADY 515#		112
CAR MISS BRENDA 062	C A R FREDERICK 722		
	LADY 819 RITO 086 C A R#		

CED EPD	BW EPD	WW EPD	Milk EPD	YW EPD	SC EPD		
+4	+1.1	+52	+20	+91	+0.81		
Acc .44	.68	.62	.33	.51	.56		
Marb	RE	Fat	\$M	\$W	\$F	\$G	\$B
+3.7	+1.4	+0.038	+30	+45	+82	+31	+113
Acc .32	.33	.29					

Sold in our 2017 sale to Jerry Petrich. Dam produced last calf at 16 years old. First daughters calved are terrific mothers and look the part. Another great sire group selling!



Add A Tag That Adds Value.

The American Angus Association's comprehensive AngusSource® Process Verified Program and services are aimed at improving profitability in the commercial sector of the cattle industry. The AngusSource portfolio of five value-added programs is your source to stay competitive in the marketplace.

Visit AngusSource.com or call 816.383.5100 to get the value you deserve.

ANGUS SOURCE®

VALUE ADDED PROGRAMS



Age and Source • Non-Hormone Treated Cattle • AS NeverEver3
• AS Cattle Care & Handling • AS Calf Management

Lot Information Explanation

BW - Actual Birthweight

WW - Actual Weight on day weaned 10/10/20)

205 wt - Weaning weight adjusted to 205 day weight to allow comparison among individuals

NR - Nursing Ratio used for within herd comparisons



Bull

CAR LEGENDARY 026

19940742

calved - 01/24/20

QUAKER HILL RAMPAGE 0A36#
CONNEALY LEGENDARY 644L
JAZZED OF CONANGA 4660

MCC DAYBREAK#
QHF BLACKCAP 6E2 OF4V16 4355
MORGANS DIRECTION 111 9901#
JAZE OF CONANGA 234

S A V RESOURCE 1441#
CAR MISS LUCY 717
CAR MISS LUCY 301

RITO 707 OF IDEAL 3407 7075
S A V BLACKCAP MAY 4136
S A V FINAL ANSWER 0035#
CAR MISS LUCY 720



BW	WW 10/10	205 wt	NR	365 wt	YR	ADG	Scrotal
65	821	746	107	1365	117	3.87	39.7
CED	BW	WW	Milk	YW	SC		
+15	-2.1	+75	+17	+144	+1.54		
Marb	RE	Fat	\$M	\$W	\$F	\$G	\$B
+.61	+1.11	-.006	+51	+66	+106	+58	+164

365 wt - Weaning weight adjusted to 365 day weight to allow comparison among individuals

ADG - Average Daily Gain

YR - Yearling Ratio used for within herd comparison

Scrotal - Adjusted scrotal measurement

Calving Ease Direct EPD (CED) - Expressed as a difference on percentage of unassisted births, with a higher value indicating greater calving ease in first-calf heifers. Predicts the average difference in ease with which a sire's calves will be born when he is bred to first-calf heifers.

Birth Weight EPD (BW) - Expressed in pounds, is a predictor of an individual's ability to transmit birth weight to his progeny compared to that of other individuals.

Weaning Weight EPD (WW) - Expressed in pounds, is a predictor of an individual's ability to transmit weaning growth to his progeny compared to that of other individuals.

Maternal Milk EPD (Milk) - A predictor of individual's genetic merit for milk and mothering ability compared to other individuals. It is that part of a calf's weaning weight attributed to milk and mothering ability.

Yearling Weight EPD (YW) - Expressed in pounds, is a predictor of an individual's ability to transmit yearling growth to his progeny compared to that of other individuals.

Scrotal Circumference (SC) - expressed in centimeters, is a predictor of the difference in transmitting ability for scrotal size compared to that of other sires.

Marbling EPD (Marb) - Expressed as a fraction of the difference in USDA marbling score of a sire's progeny compared to progeny of other sires.

Ribeye Area EPD (RE) - Expressed in square inches, is a predictor of the difference in ribeye area of a sire's progeny compared to progeny of other sires.

Fat Thickness EPD (Fat) - Expressed in inches, is a predictor of the differences in external fat thickness at the 12th rib (as measured between the 12th and 13th ribs) of a sire's progeny compared to progeny of other sires.

Maternal Weaned Calf Value (\$M) - An index expressed in dollars per head, predicts profitability differences in progeny due to genetics from conception to weaning. \$M is built off of a self-replacing herd model where commercial cattlemen replace 25% of their breeding females in the first generation and 20% in subsequent generations. Remaining cull females and all male progeny are sold as feeder calves. Increased selection pressure on \$M aims to decrease overall mature cow size and improve foot structure and fertility while maintaining weaning weights consistent with today's production.

Weaned Calf Value (\$W) - An index value expressed in dollars per head, is the expected average difference in future progeny performance for preweaning merit. \$W includes both revenue and cost adjustments associated with differences in birth weight, weaning direct growth, maternal milk, and mature cow size.

Feedlot Value (\$F) - An index value expressed in dollars per head, is the expected average difference in future progeny performance for postweaning merit compared to progeny of other sires.

Grid Value (\$G) - an index value expressed in dollars per head, is the expected average difference in future progeny performance for carcass grid merit compared to progeny of other sires.

Beef Value (\$B) - an index value expressed in dollars per head, is the expected average difference in future progeny performance for postweaning and carcass value compared to progeny of other sires.

Key to performance information used in this catalog

- Pathfinder

BW - Actual Birth Weight

WW - Actual Weaning Weight

Weaning Date - 10/10/19

205 wt - 205 Day Adjusted Weight

NR - Nursing Ratio

365 wt - 365 Day Adjusted Weight

YR - Yearling Ratio

ADG - Average Daily Gain

Scrotal - Adjusted Scrotal Measurement

ET - Embryo Transplant

Marb EPD - Marbling Carcass EPD

RE EPD - Ribeye Carcass EPD

FAT EPD - Fat Carcass EPD





YEARLING BULLS



1

Bull

CAR LEGENDARY 026

19940742 calved - 01/24/20

QUAKER HILL RAMPAGE 0A36#
CONNEALY LEGENDARY 644L
JAZZED OF CONANGA 4660

MCC DAYBREAK#
QHF BLACKCAP 6E2 OF4V16 4355
MORGANS DIRECTION 111 9901#
JAZE OF CONANGA 234

S A V RESOURCE 1441#
CAR MISS LUCY 717
CAR MISS LUCY 301

RITO 707 OF IDEAL 3407 7075
S A V BLACKCAP MAY 4136
S A V FINAL ANSWER 0035#
CAR MISS LUCY 720



BW	WW 10/10	205 wt	NR	365 wt	YR	ADG	Scrotal
65	821	746	107	1365	117	3.87	39.7
CED	BW	WW	Milk	YW	SC		
+15	-2.1	+75	+17	+144	+1.54		
Marb	RE	Fat	\$M	\$W	\$F	\$G	\$B
+0.61	+1.11	-0.06	+51	+66	+106	+58	+164

Out of 1st calf heifer. Exciting young calving ease herdbull prospect that really did well on test. Excellent set of data on this top calf by Legendary. He will be used back in our program.



2

Bull

CAR IMPRESSION 0156

19951898 calved - 02/12/20

CONNEALY IMPRESSION#
BARTELS IMPRESSION C116
K C F MISS CONSENSUS Y300

CONNEALY REFLECTION#
PEARL PAMMY OF CONANGA 194
CONNEALY CONSENSUS#
K C F MISS 589 M359#

CAR CHA CHING 528
CAR MISS DIANA 7119
CAR MISS DIANA 127

BARSTOW CASH#
CAR MISS MIKAYLA 510#
CAR DUKE 865
CAR MISS DIANA 7104



BW	WW 10/10	205 wt	NR	365 wt	YR	ADG	Scrotal
74	790	748	107	1311	112	3.52	38.3
CED	BW	WW	Milk	YW	SC		
+9	+0.3	+66	+17	+119	+1.20		
Marb	RE	Fat	\$M	\$W	\$F	\$G	\$B
+0.43	+0.32	+0.22	+61	+61	+82	+37	+119

Excellent calving ease herdbull prospect by Impression, out of a top rated Cha Ching daughter. Rock solid set of figures on this high gaining bull.



3

Bull

CAR CONSENSUS 060

19916785 calved - 01/28/20

CONNEALY CONSENSUS#
BARTELS CONSENSUS 3809 649
ELISHA OF CONANGA 868 988

KMK ALLIANCE 6595 187#
BLINDA OF CONANGA 004
G A R GRID MAKER#
ELIGENCE PLUS OF CONANGA

CAR 504 DUKE 898
CAR MISS DIANA 217#
CAR MISS DIANA 726

CAR DUKE 504
CAR MISS DIANA 6165#
A A R REALLY WINDY 1205#
CAR MISS DIANA 311#



BW	WW 10/10	205 wt	NR	365 wt	YR	ADG	Scrotal
83	878	766	110	1302	111	3.35	40.8
CED	BW	WW	Milk	YW	SC		
+3	+0.6	+63	+13	+104	+1.74		
Marb	RE	Fat	\$M	\$W	\$F	\$G	\$B
+0.08	+1.17	-0.16	+40	+54	+77	+36	+112

Dam is a 9 yr old Pathfinder cow with 7@ 110W. Previous 5 generations of cows averaged 12 calves in their lifetime production. This bull is hard to fault when visually appraised. Top end herdbull prospect with a big ribeye and top notch cow family behind him. Looking forward to using this bull back in our program.





YEARLING BULLS



4 Bull

CAR CHA CHING 066

19951915 calved - 01/29/20

BARSTOW CASH#
CAR CHA CHING 528
CAR MISS MIKAYLA 510#

SITZ DASH 10277#
BARSTOW QUEEN W16
CAR PRIMETRACKER 308#
CAR MISS MIKAYLA 209
G A R RETAIL PRODUCT#
EXECUTA OF CONANGA 939#
CAR DUKE 316
CAR MISS CAROLINE 254

CONNELY MENTOR 7374#
CAR MISS CAROLINE 459#
CAR MISS CAROLINE 511#



BW	WW 10/10	205 wt	NR	365 wt	YR	ADG	Scrotal
84	861	753	108	1385	118	3.95	39.4
CED	BW	WW	Milk	YW	SC		
+12	+1.7	+68	+17	+127	+1.02		
Marb	RE	Fat	\$M	\$W	\$F	\$G	\$B
+0.26	+0.59	+0.008	+47	+58	+100	+34	+134

Dam is 2nd generation Pathfinder cow with impeccable udder quality and fleshing ability. This top herdbull prospect by Cha Ching weaned heavy and really performed well on test. Genomics indicate calving ease. Top end bull.



5 Bull

CAR HICKORY 017

19916694 calved - 01/23/20

CAR CEDAR RIDGE 156
CAR HICKORY 547
CAR MISS MARIE 3157

COLE CREEK CEDAR RIDGE 1V#
CAR MISS LUCY 720
CAR CHINNOOK 786#
CAR MISS MARIE 943
KOU PAL JUNE AU 797#
QUEEN ELBA 763U LAR
CAR TRACKER 904#
C A R HEATHER 8102

LAR JUNE AU 796Y
CAR MISS HEATHER 7173
CAR MISS HEATHER 307



BW	WW 10/10	205 wt	NR	365 wt	YR	ADG	Scrotal
78	861	780	112	1289	110	3.18	38.7
CED	BW	WW	Milk	YW	SC		
+6	+1.7	+71	+23	+110	+0.71		
Marb	RE	Fat	\$M	\$W	\$F	\$G	\$B
+0.04	+0.37	-0.015	+52	+70	+61	+23	+84

Dam has 2@ 115W. Lots of performance in this calving ease herdbull prospect by Hickory with a top set of figures.



6 Bull

CAR DURABULL 056

19946036 calved - 01/27/20

CAR 865 DUKE 3200
CAR DURABULL LINE 575
CAR MISS MARIE 3184#

CAR DUKE 865
CAR LADY DIANA 503
CAR CHINNOOK 1119
CAR MISS MARIE 110
KOU PAL JUNE AU 797#
QUEEN ELBA 763U LAR
CAR TRACKER 219
CAR MISS VIKING 5145

LAR JUNE AU 796Y
CAR MISS VIKING 624#
CAR MISS VIKING 9191



BW	WW 10/10	205 wt	NR	365 wt	YR	ADG	Scrotal
73	872	773	111	1299	111	3.29	42.5
CED	BW	WW	Milk	YW	SC		
+10	-0.8	+60	+29	+102	+1.87		
Marb	RE	Fat	\$M	\$W	\$F	\$G	\$B
+0.41	+0.24	+0.045	+73	+71	+81	+33	+114

Dam has 3@ 96BW, 3@ 111W and 2@ 110Y. Cow family has the best udder quality on the ranch. Traces back to our foundation 131 Viking cow. This top Durabull son has had a herdbull look to him from an early age. Very well put together calving ease prospect with excellent performance and maternal values. We will use him back in our program.





YEARLING BULLS



7 Bull

CAR RARE FIND 0153

19955090

calved - 02/11/20

BASIN PAYWEIGHT 1682#
JACS RARE FIND 6503
CRAZY K BLACKCAP 4297

BASIN PAYWEIGHT 006S#
21AR O LASS 7017
A A R TEN X 7008 S A#
FOX RUN BLACKCAP 7141

LAR JUNEANU 796Y
CAR MISS VIKING 7130
CAR MISS VIKING 163#

KOUPAL JUNEANU 797#
QUEEN ELBA 763U LAR
CAR CHINNOOK 786#
CAR MISS VIKING 3119#

ANGUSGS
Powered by Neogen GenScan

BW	WW 10/10	205 wt	NR	365 wt	YR	ADG	Scrotal
90	924	868	124	1337	114	2.93	41.8
CED	BW	WW	Milk	YW	SC		
+1	+4.9	+88	+28	+146	+1.97		
Marb	RE	Fat	\$M	\$W	\$F	\$G	\$B
+57	+24	+060	+68	+83	+96	+40	+136

Three generations of Pathfinder dams tracing to our foundation 131 Viking cow. This docile, powerful herd bull prospect is long, thick, deep made, and carries himself well. Very complete individual in every way we could measure. Will be used back in our program.



8 Bull

CAR REMARKABLE 011

19916642

calved - 01/21/20

CAR REMARKABLE 640
CAR REMARKABLE 821
CAR MISS HEATHER 5167#

S A V RESOURCE 1441#
CAR MISS MARIE 769#
CAR CEDAR RIDGE 156
CAR MISS HEATHER 2197

LAR JUNEANU 796Y
CAR MISS ROBERTA 3158
CAR MISS ROBERTA 0102

KOUPAL JUNEANU 797#
QUEEN ELBA 763U LAR
LAR WINDY 64 423S#
CAR MISS ROBERTA 560

ANGUSGS
Powered by Neogen GenScan

BW	WW 10/10	205 wt	NR	365 wt	YR	ADG	Scrotal
74	818	704	111	1277	113	3.58	37.6
CED	BW	WW	Milk	YW	SC		
+11	+1.7	+71	+21	+119	+2.11		
Marb	RE	Fat	\$M	\$W	\$F	\$G	\$B
+27	+42	+022	+59	+69	+84	+31	+116

Dam has 6@ 104WR. Excellent figures, and genomics across the board on this impressive calving ease herd bull prospect by Remarkable. Carcass shows top 5% of breed for tenderness.

Connelly Angus Ranch



Everyone is invited to a
Pre-Sale CAB Prime Rib Dinner
Monday, February 22, 6:00 pm
at the Ranch, North of Valier.



9 Bull

CAR CHA CHING 0132

19951896

calved - 02/08/20

BARSTOW CASH#
CAR CHA CHING 528
CAR MISS MIKAYLA 510#

SITZ DASH 10277#
BARSTOW QUEEN W16
CAR PRIMETRACKER 308#
CAR MISS MIKAYLA 209

PRAIRIE PRIDE NEXT STEP 2036#
CAR MISS TARESA 654#
CAR MISS TARESA 137#

SYDGEN 928 DESTINATION 5420#
FLYING V MISS PRIDE 426
K C F BENNETT CAPSTONE
CAR MISS TARESA 464#

ANGUSGS
Powered by Neogen GenScan

BW	WW 10/10	205 wt	NR	365 wt	YR	ADG	Scrotal
65	819	744	106	1221	104	2.98	36.9
CED	BW	WW	Milk	YW	SC		
+10	+1.5	+77	+18	+129	+0.73		
Marb	RE	Fat	\$M	\$W	\$F	\$G	\$B
+01	+44	+011	+62	+72	+85	+20	+106

Dam is a 5th generation Pathfinder with 3@ 97B and 3@ 113W and 3@ 110Y ratios. A very complete, stylish, hard to fault calving ease herd bull prospect by Cha Ching.





YEARLING BULLS



10

Bull

CAR LEGENDARY 034

19940750 calved - 01/25/20

QUAKER HILL RAMPAGE 0A36#
CONNEALY LEGENDARY 644L
JAZZED OF CONANGA 4660

MCC DAYBREAK#
QHF BLACKCAP 6E2 OF4V16 4355
MORGANS DIRECTION 111 9901#
JAZE OF CONANGA 234

SOO LINE MOTIVE 9016#
CAR MISS MIKAYLA 511
CAR MISS MIKAYLA 9132

HF KODIAK 5R
TLA BEAUTY 5R
C A R EXT 510
C A R LADY 011 RITO 280



BW	WW 10/10	205 wt	NR	365 wt	YR	ADG	Scrotal
75	834	723	103	1253	107	3.31	35.8
CEB	BW	WW	Milk	YW	SC		
+10	-1.8	+69	+22	+119	+0.36		
Marb	RE	Fat	\$M	\$W	\$F	\$G	\$B
+42	+1.00	-0.34	+53	+71	+92	+50	+142

Dam has 4@ 101W. You will want to take a close look at this smooth made, eye appealing calving ease herdbull prospect by Legendary with a top set of figures across the board.



11

Bull

CAR CONSENSUS 074

19916812 calved - 01/30/20

CONNEALY CONSENSUS#
BARTELS CONSENSUS 3809 649
ELISHA OF CONANGA 868 988

KMK ALLIANCE 6595 187#
BLINDA OF CONANGA 004
G A R GRID MAKER#
ELIGENCE PLUS OF CONANGA

CAR CHINNOOK 786#
CAR MARIE 426
CAR MARIE 239

A A R REALLY WINDY 1205#
CAR MISS MARIE 5109
CAR TRACKER 904#
C A R LADY TRANSITION 5100



BW	WW 10/10	205 wt	NR	365 wt	YR	ADG	Scrotal
77	840	735	105	1236	105	3.13	39.4
CEB	BW	WW	Milk	YW	SC		
+7	+0.0	+61	+15	+102	+1.38		
Marb	RE	Fat	\$M	\$W	\$F	\$G	\$B
+10	+52	+0.21	+58	+56	+65	+25	+90

Dam is a very productive Chinook daughter with 5@ 105W. Dam traces 6 times to our foundation 449 cow. Excellent eye appealing, big scrotaled, calving ease herdbull prospect by Consensus.



12

Bull

CAR REVOLUTION 012

19946017 calved - 01/21/20

SVR REVOLUTION 4129
FOOS REVOLUTION 243
FOOS HAZEL 243

CANDOLIER FOREVER 376#
S C C ENCHANTRESS 3F1 X412
CROOK MT REALLY WINDY 8834
N F HAZEL 7461-8#

CAR CHINNOOK 786#
CAR MISS MARIE 1140#
CAR MISS MARIE 948

A A R REALLY WINDY 1205#
CAR MISS MARIE 5109
LAR ALLIANCE 64L#
CAR MISS MARIE 2101



BW	WW 10/10	205 wt	NR	365 wt	YR	ADG	Scrotal
75	832	716	102	1220	104	3.15	39.6
CEB	BW	WW	Milk	YW	SC		
+13	-0.9	+52	+23	+89	+1.51		
Marb	RE	Fat	\$M	\$W	\$F	\$G	\$B
-21	+52	+0.009	+68	+58	+68	+12	+79

Dam is a 10 year old Pathfinder cow. This top end extra long Revolution son offers outcross performance genetics in a calving ease package.





YEARLING BULLS



13

Bull

CAR TRUE GRIT 0127

19951895 calved - 02/07/20

HILLTOP TRUE GRIT 9202#
HARRISON TRUE GRIT 4253
HARRISON MISS HILDA 9097

SITZ ALLIANCE 7544#
HILLTOP CANDY LASS 713
SITZ ONWARD 454S
CAR MISS HILDA 6102
A A R TEN X 7008 S A#
CAR MISS AMY 121#
K C F BENNETT ENERGIZER W474
CAR MISS ROBERTA 895



CAR TEN X 107
CAR MISS ROBERTA 5182
CAR MISS ROBERTA 2176

BW	WW 10/10	205 wt	NR	365 wt	YR	ADG	Scrotal
80	804	716	102	1210	103	3.09	37.7
CED	BW	WW	Milk	YW	SC		
+6	+1.7	+73	+16	+123	+1.48		
Marb	RE	Fat	\$M	\$W	\$F	\$G	\$B
+0.5	+0.59	+0.08	+54	+64	+103	+24	+127

Dam has 3@ 106W. A top end calving ease prospect by True Grit with excellent numbers. Top 10% of the breed for tenderness.



14

Bull

CAR REMARKABLE 021

19916703 calved - 01/24/20

CAR REMARKABLE 640
CAR REMARKABLE 821
CAR MISS HEATHER 5167#

S A V RESOURCE 1441#
CAR MISS MARIE 769#
CAR CEDAR RIDGE 156
CAR MISS HEATHER 2197
SRA 2418 OF RR 303
WMR BLACKCAP 323#
CAR TRACKER 201
CAR MISS MARIE 271#



WMR HERO 036
CAR MARIE 9231
CAR MISS MARIE 508

BW	WW 10/10	205 wt	NR	365 wt	YR	ADG	Scrotal
84	922	820	117	1204	103	2.40	41.4
CED	BW	WW	Milk	YW	SC		
+7	+2.4	+67	+21	+105	+2.09		
Marb	RE	Fat	\$M	\$W	\$F	\$G	\$B
+0.5	+0.37	+0.38	+62	+65	+88	+19	+107

Dam is an outstanding 12 year old cow in our program. This outstanding herdbull prospect has been an eye catcher from the time he was a little fella.

16

Bull

CAR MOTIVE 004

19916581 calved - 01/18/20

SOO LINE MOTIVE 9016#
CAR MOTIVE 423
CAR MISS HEATHER 446#

HF KODIAK 5R
TLA BEAUTY 5R
CAR DUKE 104#
CAR HEATHER 020#
CAR PRIMETRACKER 308#
CAR PRIMROSE LADY 9118
CAR PRIMETRACKER 308#
C A R REAL LADY 657#



CAR PRIMETRACKER 512
CAR MISS DIANA 9159
CAR MISS DIANA 629

BW	WW 10/10	205 wt	NR	365 wt	YR	ADG	Scrotal
75	832	734	105	1297	111	3.52	38.2
CED	BW	WW	Milk	YW	SC		
+1	+0.2	+49	+17	+83	+0.17		
Marb	RE	Fat	\$M	\$W	\$F	\$G	\$B
+0.18	+0.35	+0.28	+29	+42	+73	+26	+99

Dam is a 12 year old Primetracker daughter. She is moderate framed with tons of rib and fleshing ability along with flawless udder quality. Lot of longevity for generations in this exciting calving ease herdbull prospect we will be using back in our program.

15

Bull

CAR MENTOR 041

19940696 calved - 01/26/20

G A R RETAIL PRODUCT#
CONNEALY MENTOR 7374#
EXECUTA OF CONANGA 939#

G A R PRECISION 1680#
G A R EXT 4927
JAUER 353 TRAVELER 589 27#
EXEC OF CONANGA 6940#
LAR WINDY 64 423S#
CAR MISS TARESA 663#
BOYD NEW DAY 8005#
C A R MISS MARIE 701



CAR INCREDIBULL 080
CAR MISS MARIE 445
CAR MISS MARIE 7163#

BW	WW 10/10	205 wt	NR	365 wt	YR	ADG	Scrotal
90	876	762	109	1244	106	3.01	38.3
CED	BW	WW	Milk	YW	SC		
+6	+2.6	+69	+19	+122	+1.61		
Marb	RE	Fat	\$M	\$W	\$F	\$G	\$B
+0.30	+0.60	+0.14	+47	+60	+86	+36	+122

Dam has 3 generations of Pathfinder donor dams behind her. This big long stout Mentor son will leave you with a set of heavy calves and some great replacement females.





YEARLING BULLS



17 Bull

CAR JUNEAU 0168

19951902 calved - 02/16/20

KOUPAL JUNEAU 797#
LAR JUNEANU 796Y
QUEEN ELBA 763U LAR

O C C JUNEAU 807J#
KOUPALS ELBA 187
LAR ALLIANCE 64L#
QUEEN ELBA 525R LAR

CONNEALY BLACK GRANITE#
CAR PRIMROSE LADY 4111
CAR PRIMROSE LADY 473

CONNEALY CONSENSUS 7229#
EURA ELGA OF CONANGA 9109#
CAR TRACKER 904#
CAR PRIMROSE LADY 229#



BW	WW 10/10	205 wt	NR	365 wt	YR	ADG	Scrotal
90	934	850	122	1274	109	2.65	38.4
CED	BW	WW	Milk	YW	SC		
+0	+3.8	+69	+25	+106	+1.14		
Marb	RE	Fat	\$M	\$W	\$F	\$G	\$B
+0.09	+0.48	+0.030	+60	+68	+64	+23	+87

Dam is a perfectly uddered Granite daughter with 4@ 102W. This moderate framed, extra stout Juneau son crushed the scales at weaning. He has developed into a very impressive herdbull prospect. These are the last of the direct Juneau sons to sell.

20 Bull

CAR TRUE GRIT 0164

19946026 calved - 02/15/20

HILLTOP TRUE GRIT 9202#
HARRISON TRUE GRIT 4253
HARRISON MISS HILDA 9097

SITZ ALLIANCE 7544#
HILLTOP CANDY LASS 713
SITZ ONWARD 454S
CAR MISS HILDA 6102

BARSTOW CASH#
CAR MISS BRENDA 585#
CAR MISS BRENDA 3132

SITZ DASH 10277#
BARSTOW QUEEN W16
S A V BISMARCK 5682#
CAR MISS BRENDA 826



BW	WW 10/10	205 wt	NR	365 wt	YR	ADG	Scrotal
78	851	772	110	1220	104	2.80	40.9
CED	BW	WW	Milk	YW	SC		
+7	+1.0	+76	+22	+121	+2.06		
Marb	RE	Fat	\$M	\$W	\$F	\$G	\$B
+0.27	+0.63	+0.034	+67	+79	+64	+33	+97

Dam is a Pathfinder with 4@ 106W. This big scrotaled True Grit son did very well in every way we could measure him. Top end calving ease herdbull prospect.

18 Bull

CAR REMARKABLE 002

19916575 calved - 01/17/20

CAR REMARKABLE 640
CAR REMARKABLE 821
CAR MISS HEATHER 5167#

S A V RESOURCE 1441#
CAR MISS MARIE 769#
CAR CEDAR RIDGE 156
CAR MISS HEATHER 2197

REDLAND RAINMAKER 3856
CAR MISS WENDY 0148
CAR MISS WENDY 7205

SITZ RAINMAKER 6169#
REDLAND ELBA 1849
CAR TRACKER 219
CAR WENDY 053#



BW	WW 10/10	205 wt	NR	365 wt	YR	ADG	Scrotal
78	836	737	105	1241	106	3.15	40.1
CED	BW	WW	Milk	YW	SC		
+15	-0.1	+60	+19	+101	+1.65		
Marb	RE	Fat	\$M	\$W	\$F	\$G	\$B
+0.33	+0.43	+0.027	+66	+59	+73	+34	+107

Dam is an 11 year old Redland Rainmaker daughter we think highly of. Eye catching calving ease herdbull prospect.



19 Bull

CAR LEGENDARY 0136

19940717 calved - 02/09/20

QUAKER HILL RAMPAGE 0A36#
CONNEALY LEGENDARY 644L
JAZZED OF CONANGA 4660

MCC DAYBREAK#
QHF BLACKCAP 6E2 OF4V16 4355
MORGANS DIRECTION 111 9901#
JAZE OF CONANGA 234

CAR RESOURCE 610
CAR MISS MARIE 812
CAR MISS MARIE 951#

S A V RESOURCE 1441#
CAR MISS ROBERTA 7117
B BAR BUSHWACKER 204
CAR MISS MARIE 509



BW	WW 10/10	205 wt	NR	365 wt	YR	ADG	Scrotal
76	798	782	113	1345	115	3.52	40.2
CED	BW	WW	Milk	YW	SC		
-1	+3.1	+75	+17	+132	+1.04		
Marb	RE	Fat	\$M	\$W	\$F	\$G	\$B
+0.49	+0.87	-0.059	+61	+61	+86	+54	+140

Out of a 1st calf heifer. Granddam is a Pathfinder. A big growthy herdbull prospect by Legendary, with outstanding performance and carcass values.





YEARLING BULLS



21

Bull

CAR REVOLUTION 008

19946015 calved - 01/20/20

SVR REVOLUTION 4129
FOOS REVOLUTION 243
FOOS HAZEL 243

CANDOLIER FOREVER 376#
S C C ENCHANTRESS 3F1 X412
CROOK MT REALLY WINDY 8834
N F HAZEL 7461-8#

CAR PRIMETRACKER 308#
CAR MARIE 002
E 7 GURU 1375
CAR MARIE 0108



BW	WW 10/10	205 wt	NR	365 wt	YR	ADG	Scrotal
77	827	711	102	1289	110	3.61	39.1
CED	BW	WW	Milk	YW	SC		
-1	+3.5	+50	+26	+98	+0.75		
Marb	RE	Fat	\$M	\$W	\$F	\$G	\$B
+0.4	+0.32	+0.008	+63	+46	+87	+20	+108

Dam is a 10 year old Primetracker cow that always brings in a good calf at weaning. This big, stout, long made Revolution son will catch your eye on sale day. Outcross genetics



22

Bull

CAR MENTOR 0100

19940669 calved - 02/03/20

G A R RETAIL PRODUCT#
CONNEALY MENTOR 7374#
EXECUTA OF CONANGA 939#

G A R PRECISION 1680#
G A R EXT 4927
JAUER 353 TRAVELER 589 27#
EXEC OF CONANGA 6940#

S A V BISMARCK 5682#
CAR MISS VIKING 9191
CAR CHINNOOK 786#
CAR MISS MARIE 7183#



BW	WW 10/10	205 wt	NR	365 wt	YR	ADG	Scrotal
74	785	761	110	1260	108	3.12	37.5
CED	BW	WW	Milk	YW	SC		
+6	+1.7	+58	+22	+111	+1.30		
Marb	RE	Fat	\$M	\$W	\$F	\$G	\$B
+0.89	+0.53	+0.10	+56	+54	+77	+62	+139

Out of a 1st calf heifer. Four generations of Pathfinder dams behind this cow. Impressive numbers, carcass values, and maternal strength behind this top calving ease herdbull prospect by Mentor.

24

Bull

CAR HOMESTRETCH 063

19916792 calved - 01/28/20

B BAR WINDY 79
B BAR HOMESTRETCH 3047
B BAR QUEEN 304#

CROOK MT REALLY WINDY 141#
B BAR LADY JEWEL 116#
SITZ RLS ALLIANCE 7164
B BAR QUEEN 557#

S A V RESOURCE 1441#
CAR MISS DIANA 776
CAR MISS DIANA 956

RITO 707 OF IDEAL 3407 7075
S A V BLACKCAP MAY 4136
REDLAND RAINMAKER 3856
CAR MISS DIANA 579



BW	WW 10/10	205 wt	NR	365 wt	YR	ADG	Scrotal
73	796	731	105	1229	105	3.11	38.8
CED	BW	WW	Milk	YW	SC		
+11	-0.4	+58	+26	+108	+0.75		
Marb	RE	Fat	\$M	\$W	\$F	\$G	\$B
-0.08	+0.66	+0.022	+53	+63	+85	+18	+104

Dam has 2@ 104W. Long made son of Homestretch will catch your attention sale day. Excellent balanced figures on this top calving ease prospect.

23

Bull

CAR ICEBERG 058

19916777 calved - 01/27/20

LOST LAKE ICEBERG 3438#
CAR ICEBERG 232
C A R MISS JOSEPHINE 726

J A R COOL HAND LUKE
ANNE OF L L R 1123
C A R TRACKER 401
C A R MISS REAL RITO 3148

LAR JUNEANU 796Y
CAR MISS DIANA 0101#
CAR EFFICIENT 904
CAR MISS JOSEPHINE 776#



BW	WW 10/10	205 wt	NR	365 wt	YR	ADG	Scrotal
75	785	720	103	1277	109	3.48	38.8
CED	BW	WW	Milk	YW	SC		
+5	+1.7	+49	+23	+102	+1.33		
Marb	RE	Fat	\$M	\$W	\$F	\$G	\$B
+0.14	+0.51	+0.015	+50	+41	+93	+27	+120

Dam has 2@ 106W. Excellent top end, high gaining, calving ease herdbull prospect by Iceberg 232. Old line proven genetics.

25

Bull

CAR HICKORY 006

19916594 calved - 01/20/20

CAR CEDAR RIDGE 156
CAR HICKORY 547
CAR MISS MARIE 3157

COLE CREEK CEDAR RIDGE 1V#
CAR MISS LUCY 720
CAR CHINNOOK 786#
CAR MISS MARIE 943

CONNEALY BLACK GRANITE#
CAR MISS DIANA 5125
CAR MISS DIANA 0101#

CONNEALY CONSENSUS 7229#
EURA ELGA OF CONANGA 9109#
K C F BENNETT CAPSTONE
CAR MISS DIANA 6180



BW	WW 10/10	205 wt	NR	365 wt	YR	ADG	Scrotal
72	857	735	105	1173	100	2.74	37.1
CED	BW	WW	Milk	YW	SC		
+9	+0.9	+51	+20	+86	+0.16		
Marb	RE	Fat	\$M	\$W	\$F	\$G	\$B
+0.45	+0.54	-0.003	+54	+49	+71	+43	+114

Dam has 4@ 102 W. Granddam is a Pathfinder. This big, stout calving ease prospect by Hickory has an outstanding cow family behind him.



YEARLING BULLS



26

Bull

CAR LEGENDARY 0114

19940509

calved - 02/05/20

QUAKER HILL RAMPAGE 0A36#
CONNEALY LEGENDARY 644L
JAZZED OF CONANGA 4660

MCC DAYBREAK#
QHF BLACKCAP 6E2 OF4V16 4355
MORGANS DIRECTION 111 9901#
JAZE OF CONANGA 234

CAR HICKORY 547
CAR MISS HEATHER 8197
CAR MISS HEATHER 630

CAR CEDAR RIDGE 156
CAR MISS MARIE 3157
CAR JUNEAU 3236
CAR MISS HEATHER 1143#



BW	WW 10/10	205 wt	NR	365 wt	YR	ADG	Scrotal
69	764	745	108	1230	105	3.03	40.1
CED	BW	WW	Milk	YW	SC		
+9	-0.3	+76	+21	+119	+1.47		
Marb	RE	Fat	\$M	\$W	\$F	\$G	\$B
+0.38	+0.54	+0.023	+56	+82	+66	+38	+104

Out of a 1st calf heifer. Granddam has 3@ 112W. Excellent EPD profile, performance, and carcass values on this top end calving ease herdbull prospect by Legendary.

27

Bull

CAR IMPRESSION 040

19916738

calved - 01/25/20

CONNEALY IMPRESSION#
BARTELS IMPRESSION C116
K C F MISS CONSENSUS Y300

CONNEALY REFLECTION#
PEARL PAMMY OF CONANGA 194
CONNEALY CONSENSUS#
K C F MISS 589 M359#

CAR CEDAR RIDGE 156
CAR MISS MIKAYLA 5207
CAR MISS MIKAYLA 294

COLE CREEK CEDAR RIDGE 1V#
CAR MISS LUCY 720
HBR ENCORE 0544
CAR MISS MIKAYLA 510#



BW	WW 10/10	205 wt	NR	365 wt	YR	ADG	Scrotal
85	806	700	100	1210	103	3.19	39.3
CED	BW	WW	Milk	YW	SC		
+11	+1.3	+65	+14	+108	+1.45		
Marb	RE	Fat	\$M	\$W	\$F	\$G	\$B
+0.43	+0.40	+0.008	+49	+58	+87	+39	+126

Dam has 4@ 101W. Great Granddam is a 16 year old Pathfinder cow still producing. This big, stout, attractive Impression son has a great maternal lineage behind him.



28

Bull

CAR JUNEAU 0131

19954769

calved - 02/08/20

KOUPAL JUNEAU 797#
LAR JUNEANU 796Y
QUEEN ELBA 763U LAR

O C C JUNEAU 807J#
KOUPALS ELBA 187
LAR ALLIANCE 64L#
QUEEN ELBA 525R LAR

CAR EFFICIENT 534#
CAR MISS BOBETT 665
CAR MISS BOBETT 457

K C F BENNETT EFFICIENT
CAR MISS SUSIE 308#
CAR CEDAR RIDGE 156
CAR MISS BOBETT 2101



BW	WW 10/10	205 wt	NR	365 wt	YR	ADG	Scrotal
72	781	712	102	1195	102	3.02	38.9
CED	BW	WW	Milk	YW	SC		
+5	+1.1	+66	+26	+106	+1.22		
Marb	RE	Fat	\$M	\$W	\$F	\$G	\$B
+0.33	+0.27	+0.024	+61	+72	+66	+32	+98

Dam & Granddam average birth ratio on progeny is 87. Outstanding calving ease herdbull prospect by Juneau that has the look and a great set of figures.



Our breeding philosophy has always been centered around producing problem free females with excellent longevity that can survive and excel in a commercial cowmen's environment.





YEARLING BULLS



29 Bull

CAR HICKORY 023

19916709 calved - 01/24/20

CAR CEDAR RIDGE 156
CAR HICKORY 547
CAR MISS MARIE 3157

COLE CREEK CEDAR RIDGE 1V#
CAR MISS LUCY 720
CAR CHINNOOK 786#
CAR MISS MARIE 943
HUMBERT BORDER 7434
HUMBERT BLACKBIRD 3530
CAR TRACKER 904#
CAR MISS TARESA 215#



BW	WW 10/10	205 wt	NR	365 wt	YR	ADG	Scrotal
84	903	797	114	1183	101	2.41	40.4
CED	BW	WW	Milk	YW	SC		
+4	+1.4	+54	+22	+82	+0.96		
Marb	RE	Fat	\$M	\$W	\$F	\$G	\$B
+0.44	+0.37	+0.18	+49	+56	+48	+39	+87

Dam has 2@ 107W. Three consecutive generations of Pathfinder cows behind dam. Big, stout herdbull prospect by Hickory that crushed the scale at weaning!

32 Bull

CAR REVOLUTION 029

19954776 calved - 01/25/20

SVR REVOLUTION 4129
FOOS REVOLUTION 243
FOOS HAZEL 243

CANDOLIER FOREVER 376#
S C C ENCHANTRESS 3F1 X412
CROOK MT REALLY WINDY 8834
N F HAZEL 7461-8#
COLE CREEK BLACK CEDAR 46P#
COLE CREEK CLOVANADA 49S#
LAR WINDY 64 423S#
CAR PRIMROSE LADY 691



BW	WW 10/10	205 wt	NR	365 wt	YR	ADG	Scrotal
84	827	718	103	1188	101	2.94	38.2
CED	BW	WW	Milk	YW	SC		
+4	+2.8	+54	+27	+84	+0.86		
Marb	RE	Fat	\$M	\$W	\$F	\$G	\$B
+0.27	+0.25	+0.35	+79	+60	+60	+28	+88

Dam is a 2nd generation Pathfinder with 7@ 106W. We nicknamed this Revolution son "Snazzy". He is a smooth made, good looking young herdbull prospect with a superb cow family behind him. Outcross genetics.

30 Bull

CAR HOMESTRETCH 0124

19954768 calved - 02/07/20

B BAR WINDY 79
B BAR HOMESTRETCH 3047
B BAR QUEEN 304#

CROOK MT REALLY WINDY 141#
B BAR LADY JEWEL 116#
SITZ RLS ALLIANCE 7164
B BAR QUEEN 557#
JENNAWAY GAME DAY 024
CAR MISS MARIE 048
CAR TRACKER 8109
CAR MISS DIANA 971#



BW	WW 10/10	205 wt	NR	365 wt	YR	ADG	Scrotal
74	776	706	111	1236	109	3.31	38.8
CED	BW	WW	Milk	YW	SC		
+12	+0.6	+53	+28	+95	+1.03		
Marb	RE	Fat	\$M	\$W	\$F	\$G	\$B
+0.21	+0.41	+0.14	+52	+59	+67	+29	+95

Dam has 3@ 103W. Look at the impressive ratios on this eye catching Homestretch son. Genomics indicate top 6% in the breed for tenderness, an important gene for adding value to your calves.



31 Bull

CAR TRUE GRIT 0181

19954771 calved - 02/19/20

HILLTOP TRUE GRIT 9202#
HARRISON TRUE GRIT 4253
HARRISON MISS HILDA 9097

SITZ ALLIANCE 7544#
HILLTOP CANDY LASS 713
SITZ ONWARD 4545
CAR MISS HILDA 6102
K C F BENNETT EFFICIENT
CAR MISS SUSIE 308#
CAR CEDAR RIDGE 156
CAR MISS MARIE 1152



BW	WW 10/10	205 wt	NR	365 wt	YR	ADG	Scrotal
72	725	680	107	1290	114	3.81	38.2
CED	BW	WW	Milk	YW	SC		
+7	+0.3	+76	+24	+135	+1.71		
Marb	RE	Fat	\$M	\$W	\$F	\$G	\$B
+0.33	+0.22	+0.14	+54	+78	+84	+32	+116

Dam h 3@ 102W. Granddam is a Pathfinder. Genomics show top 2% for weaning and top 4% for yearling weight. Excellent numbers on this top calving ease herdbull prospect by True Grit.

33 Bull

CAR ICEBERG 047

19916756 calved - 01/26/20

LOST LAKE ICEBERG 3438#
CAR ICEBERG 232
C A R MISS JOSEPHINE 726

J A R COOL HAND LUKE
ANNE OF L L R 1123
C A R TRACKER 401
C A R MISS REAL RITO 3148
SITZ RAINMAKER 6169#
REDLAND ELBA 1849
CAR TRACKER 219
CAR MISS CAROLINE 304



BW	WW 10/10	205 wt	NR	365 wt	YR	ADG	Scrotal
80	786	684	108	1226	109	3.39	39.3
CED	BW	WW	Milk	YW	SC		
+3	+2.8	+50	+20	+96	+1.31		
Marb	RE	Fat	\$M	\$W	\$F	\$G	\$B
+0.28	+0.57	+0.36	+44	+36	+94	+33	+126

Dam is a 9 year old Redland Rainmaker cow with an ideal udder and has 7@ 103W. Excellent figures and maternal values behind this top end 232 Iceberg son. Outcross genetics.



YEARLING BULLS



34

Bull

CAR HICKORY 005

19916586 calved - 01/19/20

CAR CEDAR RIDGE 156
CAR HICKORY 547
CAR MISS MARIE 3157

COLE CREEK CEDAR RIDGE 1V#
CAR MISS LUCY 720
CAR CHINNOOK 786#
CAR MISS MARIE 943
CAR BUSHWACKER 601
CAR LADY MARIE 648
LAR WINDY 64 4235#
C A R JOSEPHINE 810



BW	WW 10/10	205 wt	NR	365 wt	YR	ADG	Scrotal
80	796	684	98	1121	96	2.73	40.1
CED	BW	WW	Milk	YW	SC		
+8	+1.1	+50	+18	+71	+1.61		
Marb	RE	Fat	\$M	\$W	\$F	\$G	\$B
+0.65	+0.40	+0.069	+66	+51	+36	+45	+81

Dam is a 10 year old 2nd generation Pathfinder cow with a superb udder structure. Excellent calving ease prospect by Hickory.



lot 34

35

Bull

CAR JUNEAU 0214

19954599 calved - 02/27/20

KOUPAL JUNEAU 797#
LAR JUNEANU 796Y
QUEEN ELBA 763U LAR

O C C JUNEAU 807J#
KOUPALS ELBA 187
LAR ALLIANCE 64L#
QUEEN ELBA 525R LAR
SITZ DASH 10277#
BARSTOW QUEEN W16
CAR HERO 631
CAR MISS HILDA 516



BW	WW 10/10	205 wt	NR	365 wt	YR	ADG	Scrotal
88	780	731	115	1225	108	3.09	39.3
CED	BW	WW	Milk	YW	SC		
+4	+1.5	+75	+24	+125	+2.34		
Marb	RE	Fat	\$M	\$W	\$F	\$G	\$B
-0.05	+0.64	+0.023	+56	+75	+86	+19	+106

Dam has 4@ 104W. Another top Juneau son with impressive figures across the board. Standout young bull in the sale offering.



lot 35

36

Bull

CAR BUSHWACKER 090

19916831 calved - 02/02/20

CAR BUSHWACKER 601
CAR BUSHWACKER 618
CAR MISS BRENDA 422

B C C BUSHWACKER 41-93#
C A R MISS RAINDANCER 421#
CAR TANK 226
CAR MISS BRENDA 062
CAR 865 DUKE 3200
CAR MISS MARIE 3184#
CAR PRIMERACKER 511
CAR MISS ROBERTA 403



BW	WW 10/10	205 wt	NR	365 wt	YR	ADG	Scrotal
75	786	761	110	1239	106	2.99	39.5
CED	BW	WW	Milk	YW	SC		
+2	+1.7	+57	+25	+96	+1.63		
Marb	RE	Fat	\$M	\$W	\$F	\$G	\$B
+0.31	+0.19	+0.046	+58	+60	+68	+28	+96

Out of a 1st calf heifer. Granddam is 14 yrs old and produced herdbull CAR Resource 610. Outcross calving ease genetics in this top young herdbull prospect.

37

Bull

CAR REVOLUTION 0154

19946024 calved - 02/11/20

SVR REVOLUTION 4129
FOOS REVOLUTION 243
FOOS HAZEL 243

CANDOLIER FOREVER 376#
S C C ENCHANTRESS 3F1 X412
CROOK MT REALLY WINDY 8834
N F HAZEL 7461-8#
CONNEALY LEAD ON#
CAR MISS DIANA 8110#
CAR TIMELINE 072
CAR MISSY 454#



BW	WW 10/10	205 wt	NR	365 wt	YR	ADG	Scrotal
85	813	731	105	1160	99	2.68	37.8
CED	BW	WW	Milk	YW	SC		
-3	+3.1	+47	+24	+83	+0.56		
Marb	RE	Fat	\$M	\$W	\$F	\$G	\$B
+0.20	+0.15	+0.027	+55	+43	+65	+24	+89

Dam has 5@ 104W. Impressive weaning weight on this big, long, stout, Revolution son. Outcross genetics.



YEARLING BULLS



38

Bull

CAR BUSHWACKER 046

19916754

calved - 01/26/20

CAR BUSHWACKER 601
CAR BUSHWACKER 618
CAR MISS BRENDA 422

B C C BUSHWACKER 41-93#
C A R MISS RAINDANCER 421#
CAR TANK 226
CAR MISS BRENDA 062
CAR BUSHWACKER 601
CAR LADY MARIE 648
WMR HERO 036
CAR MISS MARIE 614#



BW	WW 10/10	205 wt	NR	365 wt	YR	ADG	Scrotal
82	834	725	104	1210	103	3.03	39.8
CED	BW	WW	Milk	YW	SC		
+2	+2.1	+55	+23	+95	+1.54		
Marb	RE	Fat	\$M	\$W	\$F	\$G	\$B
+28	+28	+0.45	+40	+51	+70	+28	+98

Dam is a 10 year old cow with 7@ 105W. Excellent long made, big topped son of Bushwacker 618 with a big scrotal.



39

Bull

CAR CHA CHING 0122

19951894

calved - 02/06/20

BARSTOW CASH#
CAR CHA CHING 528
CAR MISS MIKAYLA 510#

SITZ DASH 10277#
BARSTOW QUEEN W16
CAR PRIMETRACKER 308#
CAR MISS MIKAYLA 209
HUMBERT BORDER 7434
HUMBERT BLACKBIRD 3530
CAR INCREDIBULL 080
CAR MISS VIKING 5145



BW	WW 10/10	205 wt	NR	365 wt	YR	ADG	Scrotal
74	783	711	102	1178	101	2.92	36.8
CED	BW	WW	Milk	YW	SC		
+12	-0.7	+51	+26	+84	+0.73		
Marb	RE	Fat	\$M	\$W	\$F	\$G	\$B
+20	+38	+0.43	+42	+58	+63	+26	+89

Dam is a perfectly uddered cow that traces back to our foundation 131 Viking cow. Excellent phenotype on this top calving ease prospect by Cha Ching.



40

Bull

CAR EFFICIENT 057

19916773

calved - 01/27/20

K C F BENNETT EFFICIENT
CAR EFFICIENT 534#
CAR MISS SUSIE 308#

CONNELLY FOREFRONT#
K C F BL MISS 5522 E152
CAR DUKE 104#
C A R MISS TRENDY 449
SITZ RAINMAKER 6169#
REDLAND ELBA 1849
N BAR EMULATION EXT#
LADY TRAVELER 449 C A R#



BW	WW 10/10	205 wt	NR	365 wt	YR	ADG	Scrotal
76	785	706	101	1208	103	3.14	40.4
CED	BW	WW	Milk	YW	SC		
+9	-0.8	+44	+24	+78	+0.87		
Marb	RE	Fat	\$M	\$W	\$F	\$G	\$B
+23	+37	+0.27	+75	+52	+73	+28	+102

Dam is an 11 year old Pathfinder Redland Rainmaker daughter with 9@ 107W. One of our favorite cows. Notice she is the granddaughter of foundation 449 cow. Exciting genetics package in this top end eye appealing calving ease herdbull prospect by Efficient. Friendliest bull in the pen.





YEARLING BULLS



41

Bull

CAR TRUE GRIT 0211

19954774

calved - 02/27/20

HILLTOP TRUE GRIT 9202#
HARRISON TRUE GRIT 4253
HARRISON MISS HILDA 9097

SITZ ALLIANCE 7544#
HILLTOP CANDY LASS 713
SITZ ONWARD 454S
CAR MISS HILDA 6102
LAR JUNEANU 796Y
CAR MISS DIANA 0101#
VERMILION DATELINE 7078#
CAR MISS DONNA 781



CAR JUNEANU 3236
CAR MISS DONNA 572
CAR MISS DONNA 418

BW	WW 10/10	205 wt	NR	365 wt	YR	ADG	Scrotal
75	769	720	100	1314	100	3.71	39.8
CED	BW	WW	Milk	YW	SC		
+7	+0.4	+66	+27	+121	+2.59		
Marb	RE	Fat	\$M	\$W	\$F	\$G	\$B
+0.51	+0.14	+0.057	+55	+68	+89	+36	+125

Tremendous cow family behind this high performing calving ease herd bull prospect that will catch your eye. Very complete individual with genomic profile showing top 1% for weaning and top 3% for yearling weights in the breed.

Key to performance information used in this catalog

- # - Pathfinder
- BW - Actual Birth Weight
- WW - Actual Weaning Weight
- Weaning Date - 10/10/20
- 205 wt - 205 Day Adjusted Weight
- NR - Nursing Ratio
- 365 wt - 365 Day Adjusted Weight
- YR - Yearling Ratio
- ADG - Average Daily Gain
- Scrotal - Adjusted Scrotal Measurement
- ET - Embryo Transplant
- Marb EPD - Marbling Carcass EPD
- RE EPD - Ribeye Carcass EPD
- FAT EPD - Fat Carcass EPD



42

Bull

CAR HOMESTRETCH 0108

19951891

calved - 02/05/20

B BAR WINDY 79
B BAR HOMESTRETCH 3047
B BAR QUEEN 304#

CROOK MT REALLY WINDY 141#
B BAR LADY JEWEL 116#
SITZ RLS ALLIANCE 7164
B BAR QUEEN 557#
COLE CREEK CEDAR RIDGE 1V#
CAR MISS LUCY 720
CAR CHINNOOK 786#
CAR MISS CAROLINE 436



CAR CEDAR RIDGE 156
CAR MISS CAROLINE 612
CAR MISS CAROLINE 036

BW	WW 10/10	205 wt	NR	365 wt	YR	ADG	Scrotal
78	781	708	101	1191	101	3.02	39.8
CED	BW	WW	Milk	YW	SC		
+10	+0.6	+59	+32	+94	+1.19		
Marb	RE	Fat	\$M	\$W	\$F	\$G	\$B
+0.35	+0.57	0	+64	+72	+76	+39	+115

Dam has 3@ 99W. This impressive looking Homestretch son has a real nice set of balanced numbers and calving ease credentials.

44

Bull

CAR TRUE GRIT 0196

19961411

calved - 02/23/20

HILLTOP TRUE GRIT 9202#
HARRISON TRUE GRIT 4253
HARRISON MISS HILDA 9097

SITZ ALLIANCE 7544#
HILLTOP CANDY LASS 713
SITZ ONWARD 454S
CAR MISS HILDA 6102
LAR JUNEANU 796Y
CAR MISS DIANA 0101#
CAR CHINNOOK 786#
CAR MISS HEATHER 999



CAR JUNEANU 3236
CAR MISS HEATHER 630
CAR MISS HEATHER 1143#

BW	WW 10/10	205 wt	NR	365 wt	YR	ADG	Scrotal
80	801	757	119	1269	112	3.20	38.8
CED	BW	WW	Milk	YW	SC		
+5	+1.2	+66	+12	+113	+1.47		
Marb	RE	Fat	\$M	\$W	\$F	\$G	\$B
+0.02	+0.68	-0.003	+47	+53	+87	+25	+113

Dam has 3@ 112W. Granddam is a Pathfinder. Top end calving ease herd bull prospect when you look at weaning and yearling ratios plus EPD profile.

43

Bull

CAR CONSENSUS 0113

19951893

calved - 02/05/20

CONNEALY CONSENSUS#
BARTELS CONSENSUS 3809 649
ELISHA OF CONANGA 868 988

KMK ALLIANCE 6595 187#
BLINDA OF CONANGA 004
G A R GRID MAKER#
ELIGENCE PLUS OF CONANGA
S A V BISMARCK 5682#
CAR MISS VIKING 9191
CAR TANK 226
CAR MISS JULIE 0164



CAR BISMARCK 371
CAR MISS JULIE 678
CAR MISS JULIE 478

BW	WW 10/10	205 wt	NR	365 wt	YR	ADG	Scrotal
68	767	694	99	1200	102	3.16	38.3
CED	BW	WW	Milk	YW	SC		
+5	+1.3	+61	+17	+109	+1.71		
Marb	RE	Fat	\$M	\$W	\$F	\$G	\$B
+0.41	+0.72	+0.010	+51	+54	+83	+43	+126

This top sleep all night calving ease bull by Consensus is in the top 1% of the breed for tenderness according to his Genomics. Talk about adding value to the calves you sell.



lot 43



YEARLING BULLS



45

Bull

CAR REMARKABLE 009

19916601 calved - 01/21/20

CAR REMARKABLE 640
CAR REMARKABLE 821
CAR MISS HEATHER 5167#

S A V RESOURCE 1441#
CAR MISS MARIE 769#
CAR CEDAR RIDGE 156
CAR MISS HEATHER 2197
SITZ DASH 10277#
BARSTOW QUEEN W16
CAR DUKE 104#
CAR MISS TARESA 215#

BARSTOW CASH#
CAR MISS TARESA 517
CAR MISS TARESA 663#



BW	WW 10/10	205 wt	NR	365 wt	YR	ADG	Scrotal
77	775	668	96	1170	100	3.14	39.1
CED	BW	WW	Milk	YW	SC		
+12	+0.4	+60	+21	+113	+2.11		
Marb	RE	Fat	\$M	\$W	\$F	\$G	\$B
+0.41	+0.43	+0.045	+41	+55	+82	+36	+118

Dam has 3 consecutive generations of Pathfinder dams behind her. Excellent eye appealing calving ease herdbull prospect by Remarkable.



46

Bull

CAR BUSHWACKER 0107

19916633 calved - 02/05/20

CAR BUSHWACKER 601
CAR BUSHWACKER 618
CAR MISS BRENDA 422

B C C BUSHWACKER 41-93#
C A R MISS RAINDANCER 421#
CAR TANK 226
CAR MISS BRENDA 062
JENNAWAY GAME DAY 024
CAR MISS MARIE 8212#
CAR STEWARD 076
CAR MISS JULIE 2100

CAR GAME DAY 406
CAR MISS JULIE 8192
CAR MISS JULIE 3214



BW	WW 10/10	205 wt	NR	365 wt	YR	ADG	Scrotal
73	710	698	101	1199	103	3.13	37.6
CED	BW	WW	Milk	YW	SC		
+7	+1.5	+50	+26	+89	+0.47		
Marb	RE	Fat	\$M	\$W	\$F	\$G	\$B
+0.38	+0.20	+0.057	+50	+52	+97	+31	+128

Out of a 1st calf heifer. Strong maternal lineage behind this impressive looking Bushwacker 618 son.

48

Bull

CAR HOMESTRETCH 0101

19925476 calved - 02/03/20

B BAR WINDY 79
B BAR HOMESTRETCH 3047
B BAR QUEEN 304#

CROOK MT REALLY WINDY 141#
B BAR LADY JEWEL 116#
SITZ RLS ALLIANCE 7164
B BAR QUEEN 557#
SANDPOINT BUTKUS X797#
GDAR PAMELA EVER 2115#
O C C UNMISTAKABLE 946U#
CAR MISS MARIE 3187

GDAR BUTKUS 5217
CAR MARIE 8208
CAR MISS MARIE 599



BW	WW 10/10	205 wt	NR	365 wt	YR	ADG	Scrotal
70	714	699	100	1184	101	3.03	38.5
CED	BW	WW	Milk	YW	SC		
+11	+0.4	+56	+32	+96	+0.82		
Marb	RE	Fat	\$M	\$W	\$F	\$G	\$B
-0.13	+0.75	-0.023	+59	+69	+69	+21	+90

Out of a 1st calf heifer. Granddam has 4@ 117W. Outcross calving ease genetics on this top Homestretch bull with a balanced set of numbers.

47

Bull

CAR RARE FIND 0141

19955089 calved - 02/09/20

BASIN PAYWEIGHT 1682#
JACS RARE FIND 6503
CRAZY K BLACKCAP 4297

BASIN PAYWEIGHT 0065#
21AR O LASS 7017
A A R TEN X 7008 S A#
FOX RUN BLACKCAP 7141
LAR WINDY 64 4235#
CAR MARIE 239
CAR RIDGERUNNER 867
CAR MISS DIANA 0101#

CAR INCREDIBULL 820
CAR MISS DIANA 844
CAR MISS DIANA 2120#



BW	WW 10/10	205 wt	NR	365 wt	YR	ADG	Scrotal
76	752	741	107	1165	100	2.65	40.7
CED	BW	WW	Milk	YW	SC		
+8	+1.5	+68	+30	+103	+2.08		
Marb	RE	Fat	\$M	\$W	\$F	\$G	\$B
+0.59	+0.45	+0.045	+65	+84	+61	+45	+105

Out of a 1st calf heifer. 5 of the 6 previous generations of cows behind the dam are Pathfinder producers tracing to our foundation 937 cow. Top set of numbers and carcass values on this outcross calving ease prospect.

49

Bull

CAR TRUE GRIT 0183

19954772 calved - 02/20/20

HARRISON TRUE GRIT 4253
CAR TRUE GRIT 8141
CAR MISS MARIE 582

HILLTOP TRUE GRIT 9202#
HARRISON MISS HILDA 9097
CAR JUNEAU 3236
CAR MISS MARIE 358#
BASIN PAYWEIGHT 1682#
PAHR RITA Q28 OF 0151 9Q20
CAR CHINNOCK 786#
CAR MISS MARIE 948

PAHR YETI B5
CAR MISS MARIE 8107
CAR MISS MARIE 1140#



BW	WW 10/10	205 wt	NR	365 wt	YR	ADG	Scrotal
75	740	748	118	1201	106	2.83	39.1
CED	BW	WW	Milk	YW	SC		
+10	+2.4	+70	+25	+117	+2.42		
Marb	RE	Fat	\$M	\$W	\$F	\$G	\$B
+0.41	+0.14	+0.031	+59	+71	+68	+33	+101

Out of 1st calf heifer. Granddam is a Pathfinder. Look at the impressive ratios and numbers on this top calving ease prospect by True Grit 8141.



YEARLING BULLS



50 Bull

CAR REMARKABLE 095

19916841

calved - 02/03/20

CAR REMARKABLE 640
CAR REMARKABLE 821
CAR MISS HEATHER 5167#

S A V RESOURCE 1441#
CAR MISS MARIE 769#
CAR CEDAR RIDGE 156
CAR MISS HEATHER 2197

BASIN PAYWEIGHT 1682#
PAHR RITA Q28 OF 0151 9Q20
CAR TEN X 107
CAR MISS DIANA 7189



PAHR YETI B5
CAR MISS DIANA 8120
CAR MISS DIANA 6113

BW	WW 10/10	205 wt	NR	365 wt	YR	ADG	Scrotal
72	701	688	100	1194	103	3.16	39.5
CED	BW	WW	Milk	YW	SC		
+12	+0.9	+70	+23	+106	+1.49		
Marb	RE	Fat	\$M	\$W	\$F	\$G	\$B
+0.8	+0.74	+0.035	+96	+80	+65	+26	+91

Out of a 1st calf heifer. Excellent numbers and carcass values on this top calving ease herdbull prospect by Remarkable 821.

53 Bull

CAR CHA CHING 0169

19954770

calved - 02/16/20

BARSTOW CASH#
CAR CHA CHING 528
CAR MISS MIKAYLA 510#

SITZ DASH 10277#
BARSTOW QUEEN W16
CAR PRIMETRACKER 308#
CAR MISS MIKAYLA 209

A A R TEN X 7008 S A#
CAR MISS HEATHER 1113#
CAR MISS HEATHER 420#

MYTTY IN FOCUS#
A A R LADY KELTON 5551#
CAR TRACKER 904#
CAR MISS HEATHER 175#



BW	WW 10/10	205 wt	NR	365 wt	YR	ADG	Scrotal
83	760	692	99	1119	95	2.67	41.0
CED	BW	WW	Milk	YW	SC		
+5	+1.0	+55	+27	+90	+1.98		
Marb	RE	Fat	\$M	\$W	\$F	\$G	\$B
+0.40	+0.30	+0.061	+74	+63	+65	+32	+97

Dam is a 3rd generation Pathfinder with 8@ 107W. This big scrotaled Cha Ching son is in the top 2% of the breed for heifer pregnancy and top 11% for tenderness according to his genomics. Top proven cow family in our program.

51 Bull

CAR JUNEAU 0205

19951909

calved - 02/25/20

KOUPAL JUNEAU 797#
LAR JUNEANU 796Y
QUEEN ELBA 763U LAR

O C C JUNEAU 807J#
KOUPALS ELBA 187
LAR ALLIANCE 64L#
QUEEN ELBA 525R LAR

LAR WINDY 64 423S#
CAR MISS TARESA 663#
CAR TRACKER 941
C A R LADY 011 RITO 280



CAR INCREDIBULL 080
CAR MISS MIKAYLA 4183
CAR MISS MIKAYLA 431

BW	WW 10/10	205 wt	NR	365 wt	YR	ADG	Scrotal
86	792	738	116	1277	113	3.37	39.2
CED	BW	WW	Milk	YW	SC		
0	+3.9	+70	+23	+119	+1.58		
Marb	RE	Fat	\$M	\$W	\$F	\$G	\$B
+0.28	+0.72	-0.005	+63	+60	+87	+38	+125

Dam has 5@ 101W. This top end Juneau son is packing a lot of muscle. Top end herdbull prospect by Juneau with impressive numbers across the board. This is the last of the direct Juneau sons to sell.

54 Bull

CAR MENTOR 081

19940667

calved - 02/01/20

G A R RETAIL PRODUCT#
CONNEALY MENTOR 7374#
EXECUTA OF CONANGA 939#

G A R PRECISION 1680#
G A R EXT 4927
JAUER 353 TRAVELER 589 27#
EXEC OF CONANGA 6940#

GDAR BUTKUS 5217
CAR MISS TARESA 8137
CAR MISS TARESA 310#

SANDPOINT BUTKUS X797#
GDAR PAMELA EVER 2115#
S A V FINAL ANSWER 0035#
CAR MISS TARESA 7113



BW	WW 10/10	205 wt	NR	365 wt	YR	ADG	Scrotal
66	733	712	103	1237	106	3.28	39.0
CED	BW	WW	Milk	YW	SC		
+9	+0.5	+53	+28	+102	+1.35		
Marb	RE	Fat	\$M	\$W	\$F	\$G	\$B
+0.53	+0.67	+0.029	+69	+60	+78	+46	+124

Out of a 1st calf heifer. Granddam is a Pathfinder. This impressive calving ease Mentor son has a balanced set of figures and top carcass values.

52 Bull

CAR LEGENDARY 028

19940743

calved - 01/24/20

QUAKER HILL RAMPAGE 0A36#
CONNEALY LEGENDARY 644L
JAZZED OF CONANGA 4660

MCC DAYBREAK#
QHF BLACKCAP 6E2 OF4V16 4355
MORGANS DIRECTION 111 9901#
JAZE OF CONANGA 234

JENNAWAY GAME DAY 024
CAR MISS MARIE 8212#
SOO LINE MOTIVE 9016#
CAR MISS MIKAYLA 9132



CAR GAME DAY 406
CAR MISS MIKAYLA 787
CAR MISS MIKAYLA 511

BW	WW 10/10	205 wt	NR	365 wt	YR	ADG	Scrotal
65	779	741	107	1243	106	3.14	36.7
CED	BW	WW	Milk	YW	SC		
+8	+0.2	+52	+31	+91	+0.89		
Marb	RE	Fat	\$M	\$W	\$F	\$G	\$B
+0.21	+0.69	-0.011	+60	+63	+83	+35	+118

Dam has 2@ 108W. Top end figures on this eye appealing sleep all night calving ease prospect by Legendary.





YEARLING BULLS



55 Bull

CAR REVOLUTION 099

19951916

calved - 02/03/20

SVR REVOLUTION 4129
FOOS REVOLUTION 243
FOOS HAZEL 243

CANDOLIER FOREVER 376#
S C C ENCHANTRESS 3F1 X412
CROOK MT REALLY WINDY 8834
N F HAZEL 7461-8#

CAR TIMELINE 072
CAR MISS ROBERTA 6108#
A A R TEN X 7008 S A#
CAR MISS HEATHER 420#

CAR TIMELINE 072
CAR MISS HEATHER 3116
CAR MISS HEATHER 1113#



BW	WW 10/10	205 wt	NR	365 wt	YR	ADG	Scrotal
86	783	693	99	1192	102	3.12	37.0
CED	BW	WW	Milk	YW	SC		
+3	+2.5	+48	+25	+79	+0.11		
Marb	RE	Fat	\$M	\$W	\$F	\$G	\$B
+0.2	+0.21	+0.27	+69	+50	+72	+17	+89

Dam has 5@ 109W. She is backed by 3 consecutive generations of Pathfinder cows. Outcross performance genetics on this big stout Revolution son.

58 Bull

CAR MENTOR 077

19940695

calved - 02/01/20

G A R RETAIL PRODUCT#
CONNEALY MENTOR 7374#
EXECUTA OF CONANGA 939#

G A R PRECISION 1680#
G A R EXT 4927
JAUER 353 TRAVELER 589 27#
EXEC OF CONANGA 6940#

S A V RESOURCE 1441#
CAR MISS MARIE 640#
CAR MISS MARIE 1140#

RITO 707 OF IDEAL 3407 7075
S A V BLACKCAP MAY 4136
CAR CHINNOOK 786#
CAR MISS MARIE 948



BW	WW 10/10	205 wt	NR	365 wt	YR	ADG	Scrotal
80	715	645	102	1251	111	3.79	36.6
CED	BW	WW	Milk	YW	SC		
+7	+0.4	+57	+22	+114	+0.71		
Marb	RE	Fat	\$M	\$W	\$F	\$G	\$B
+0.56	+0.58	+0.11	+50	+53	+99	+48	+146

Dam will make Pathfinder status this spring, making her a 2nd generation Pathfinder. Dam has 3@ 108W. Excellent calving ease herd bull prospect by Mentor.

56 Bull

CAR REMARKABLE 051

19916769

calved - 01/27/20

S A V RESOURCE 1441#
CAR REMARKABLE 640
CAR MISS MARIE 769#

RITO 707 OF IDEAL 3407 7075
S A V BLACKCAP MAY 4136
CAR EFFICIENT 534#
CAR MISS MARIE 5164

S A V BISMARCK 5682#
CAR MISS VIKING 9191
WMR TIMELESS 458#
CAR MISS DIANA 861

CAR BISMARCK 371
CAR MISS DIANA 747
CAR MISS DIANA 274#



BW	WW 10/10	205 wt	NR	365 wt	YR	ADG	Scrotal
66	781	716	102	1209	103	3.08	38.3
CED	BW	WW	Milk	YW	SC		
+13	-0.4	+48	+26	+83	+1.10		
Marb	RE	Fat	\$M	\$W	\$F	\$G	\$B
+0.16	+0.72	+0.20	+55	+54	+81	+30	+111

Dam has 2 calves @ 102W. Granddam is a 9 year old Pathfinder cow. Excellent calving ease prospect from a real productive cow family. Top 5% of breed for tenderness.

59 Bull

CAR TRUE GRIT 0167

19951901

calved - 02/16/20

HILLTOP TRUE GRIT 9202#
HARRISON TRUE GRIT 4253
HARRISON MISS HILDA 9097

SITZ ALLIANCE 7544#
HILLTOP CANDY LASS 713
SITZ ONWARD 4545
CAR MISS HILDA 6102

CAR CEDAR RIDGE 156
CAR MISS MARIE 3191
CAR MISS MARIE 132

COLE CREEK CEDAR RIDGE 1V#
CAR MISS LUCY 720
CAR MEDICINE MAN 640
CAR MISS MARIE 266#



BW	WW 10/10	205 wt	NR	365 wt	YR	ADG	Scrotal
77	711	648	102	1192	106	3.40	38.4
CED	BW	WW	Milk	YW	SC		
+7	+2.1	+64	+16	+105	+1.39		
Marb	RE	Fat	\$M	\$W	\$F	\$G	\$B
+0.54	+0.22	+0.062	+48	+57	+63	+38	+101

Dam has 6@ 105W. Nice balanced numbers on this calving ease prospect by True Grit.

57 Bull

CAR BUSHWACKER 0133

19916660

calved - 02/08/20

CAR BUSHWACKER 601
CAR BUSHWACKER 618
CAR MISS BRENDA 422

B C C BUSHWACKER 41-93#
C A R MISS RAINDANCER 421#
CAR TANK 226
CAR MISS BRENDA 062

A A R REALLY WINDY 1205#
CAR MISS MARIE 5109
PRAIRIE PRIDE NEXT STEP 2036#
CAR MISS JULIE 4130

CAR CHINNOOK 786#
CAR MISS JULIE 849
CAR MISS JULIE 664



BW	WW 10/10	205 wt	NR	365 wt	YR	ADG	Scrotal
72	735	724	105	1223	105	3.12	39.7
CED	BW	WW	Milk	YW	SC		
+8	+0.5	+49	+26	+90	+0.86		
Marb	RE	Fat	\$M	\$W	\$F	\$G	\$B
+0.44	+0.08	+0.13	+32	+49	+65	+35	+100

Out of a 1st calf heifer. Impressive calving ease prospect by Bushwacker with a balanced set of numbers.

60 Bull

CAR REMARKABLE 069

19916803

calved - 01/29/20

S A V RESOURCE 1441#
CAR REMARKABLE 640
CAR MISS MARIE 769#

RITO 707 OF IDEAL 3407 7075
S A V BLACKCAP MAY 4136
CAR EFFICIENT 534#
CAR MISS MARIE 5164

CAR TEN X 107
CAR MISS DIANA 6188
CAR MISS DIANA 2120#

A A R TEN X 7008 S A#
CAR MISS AMY 121#
CAR RIDGERUNNER 867
CAR MISS DIANA 0101#



BW	WW 10/10	205 wt	NR	365 wt	YR	ADG	Scrotal
77	802	716	102	1153	98	2.73	37.0
CED	BW	WW	Milk	YW	SC		
+1	+2.6	+66	+26	+108	+1.45		
Marb	RE	Fat	\$M	\$W	\$F	\$G	\$B
+0.56	+0.41	+0.19	+61	+67	+79	+45	+123

Dam has 3@ 101W. 5 generations of Pathfinder cows tracing back to our foundation 937 cow. This top end Remarkable son weaned heavy off the cow. Good carcass values and numbers.



YEARLING BULLS



61 Bull

CAR BUSHWACKER 0109

19942267

calved - 02/05/20

CAR BUSHWACKER 601
CAR BUSHWACKER 618
CAR MISS BRENDA 422

B C C BUSHWACKER 41-93#
C A R MISS RAINDANCER 421#
CAR TANK 226
CAR MISS BRENDA 062

HARRISON TRUE GRIT 4253
CAR MISS MIKAYLA 8232
CAR MISS MIKAYLA 5207

HILLTOP TRUE GRIT 9202#
HARRISON MISS HILDA 9097
CAR CEDAR RIDGE 156
CAR MISS MIKAYLA 294



BW	WW 10/10	205 wt	NR	365 wt	YR	ADG	Scrotal
70	720	707	102	1205	103	3.11	36.9
CED	BW	WW	Milk	YW	SC		
+6	+0.9	+66	+29	+112	+1.21		
Marb	RE	Fat	\$M	\$W	\$F	\$G	\$B
+0.55	+0.41	+0.036	+60	+73	+95	+43	+138

Out of a 1st calf heifer. Top numbers and genomic values on this top end calving ease herdbull prospect by Bushwacker 618.

64 Bull

CAR HICKORY 0110

19946016

calved - 02/05/20

CAR CEDAR RIDGE 156
CAR HICKORY 547
CAR MISS MARIE 3157

COLE CREEK CEDAR RIDGE 1V#
CAR MISS LUCY 720
CAR CHINNOOK 786#
CAR MISS MARIE 943

DIAMOND CAPITALIST B011
CAR MISS CAROLINE 7204
CAR MISS CAROLINE 036

CONNEALY CAPITALIST 028#
DIAMOND BLACK LADY 7206#
CAR CHINNOOK 786#
CAR MISS CAROLINE 436



BW	WW 10/10	205 wt	NR	365 wt	YR	ADG	Scrotal
85	743	698	100	1181	101	3.02	42.1
CED	BW	WW	Milk	YW	SC		
+8	+1.5	+54	+14	+95	+2.47		
Marb	RE	Fat	\$M	\$W	\$F	\$G	\$B
+0.35	+0.44	+0.010	+41	+41	+49	+36	+86

Cow family has an excellent flesching ability and udder quality. This big scrotaled Hickory son's genetics are bred to excel in a low input environment.

62 Bull

CAR BUTKUS 0188

19955088

calved - 02/20/20

SANDPOINT BUTKUS X797#
GDAR BUTKUS 5217
GDAR PAMELA EVER 2115#

S A V FINAL ANSWER 0035#
G A R GRID MAKER 4603
GDAR GAME DAY 449#
GDAR PAMELA EVER 0263#

S A V RESOURCE 1441#
CAR MISSY 7131
CAR MISSY 4200

RITO 707 OF IDEAL 3407 7075
S A V BLACKCAP MAY 4136
CAR LEAD ON 2106
CAR MISSY 232



BW	WW 10/10	205 wt	NR	365 wt	YR	ADG	Scrotal
80	748	725	114	1288	114	3.52	38.6
CED	BW	WW	Milk	YW	SC		
+6	+1.8	+64	+24	+114	+1.08		
Marb	RE	Fat	\$M	\$W	\$F	\$G	\$B
+0.48	+0.65	+0.020	+71	+66	+75	+44	+119

Dam has 2@ 113W. Impressive ratios on this high performing Butkus son. Top 3% in the breed for tenderness.

65 Bull

CAR LEGENDARY 080

19916820

calved - 02/01/20

QUAKER HILL RAMPAGE 0A36#
CONNEALY LEGENDARY 644L
JAZZED OF CONANGA 4660

MCC DAYBREAK#
QHF BLACKCAP 6E2 OF4V16 4355
MORGANS DIRECTION 111 9901#
JAZE OF CONANGA 234

CAR CHINNOOK 786#
CAR MISS MARIE 878
CAR MISS MARIE 358#

A A R REALLY WINDY 1205#
CAR MISS MARIE 5109
E 7 GURU 1375
CAR MARIE 0108



BW	WW 10/10	205 wt	NR	365 wt	YR	ADG	Scrotal
60	706	688	109	1115	99	2.67	37.5
CED	BW	WW	Milk	YW	SC		
+14	-1.3	+60	+25	+99	+1.18		
Marb	RE	Fat	\$M	\$W	\$F	\$G	\$B
+0.97	+0.44	+0.012	+76	+70	+76	+65	+141

Out of a 1st calf heifer. 5 generations of Pathfinder dams behind this top young cow. Pathfinder granddam produced 16 calves in her lifetime. Excellent sleep all night calving ease herdbull prospect by Legendary with top numbers and great carcass values.

63 Bull

CAR MOTIVE 018

19916697

calved - 01/23/20

SOO LINE MOTIVE 9016#
CAR MOTIVE 416
CAR PRIMROSE LADY 691

HF KODIAK 5R
TLA BEAUTY 5R
CAR PRIMTRACKER 308#
CAR PRIMROSE LADY 9118

LAR JUNEANU 796Y
CAR MISS KAREN 759
CAR MISS KAREN 284

KOUPAL JUNEANU 797#
QUEEN ELBA 763U LAR
CAR EFFICIENT 904
CAR MISS KAREN 4129



BW	WW 10/10	205 wt	NR	365 wt	YR	ADG	Scrotal
78	767	701	100	1197	102	3.10	39.7
CED	BW	WW	Milk	YW	SC		
+1	+2.6	+51	+29	+85	+1.23		
Marb	RE	Fat	\$M	\$W	\$F	\$G	\$B
+0.51	+0.23	+0.062	+39	+54	+64	+37	+100

Dam has 2@ 103W. This 416 Motive son is really well put together. The 416 Motive daughters are as hardy as they come. We love them.

66 Bull

CAR RARE FIND 0121

19955114

calved - 02/06/20

BASIN PAYWEIGHT 1682#
JACS RARE FIND 6503
CRAZY K BLACKCAP 4297

BASIN PAYWEIGHT 006S#
21AR O LASS 7017
A A R TEN X 7008 S A#
FOX RUN BLACKCAP 7141

PREMIER CHAIRMAN 6011A#
CAR MISS MARIE 4104#
C A R MISS MARIE 701

GREENBRAE CHAIRMAN#
J K QUEEN 141
N BAR EMULATION EXT#
LADY TRAVELER 449 C A R#



BW	WW 10/10	205 wt	NR	365 wt	YR	ADG	Scrotal
72	753	691	109	1158	103	2.92	36.0
CED	BW	WW	Milk	YW	SC		
+9	-0.3	+48	+32	+85	+1.57		
Marb	RE	Fat	\$M	\$W	\$F	\$G	\$B
+0.70	+0.43	+0.042	+58	+62	+78	+50	+127

Dam is a 17 yr old Pathfinder cow still going strong and granddaughter of our foundation 449 cow. Outcross calving ease genetics with impressive carcass values.



YEARLING BULLS



67 Bull

CAR JUNEAU 037

19946034

calved - 01/25/20

LAR JUNEANU 796Y
CAR JUNEAU 7179
CAR MISS MARIE 340#

KOUPAL JUNEAU 797#
QUEEN ELBA 763U LAR
CAR CHINNOOK 786#
CAR MISS MARIE 7183#

S A V BISMARCK 5682#
CAR MISS PRIMROSE 3125
CAR MISS PRIMROSE 865

G A R GRID MAKER#
S A V ABIGALE 0451
CAR TRACKER 904#
CAR MISS PRIMROSE 023#



BW	WW 10/10	205 wt	NR	365 wt	YR	ADG	Scrotal
76	827	717	103	1106	95	2.43	37.7
CED	BW	WW	Milk	YW	SC		
+3	+2.5	+57	+23	+94	+1.25		
Marb	RE	Fat	\$M	\$W	\$F	\$G	\$B
+1.3	+2.5	+0.25	+59	+56	+52	+22	+74

Dam has 5@ 107W. Lots of good cows tied up in the pedigree of this top Juneau grandson.

70 Bull

CAR MENTOR 0143

19952134

calved - 02/09/20

G A R RETAIL PRODUCT#
CONNEALY MENTOR 7374#
EXECUTA OF CONANGA 939#

G A R PRECISION 1680#
G A R EXT 4927
JAUER 353 TRAVELER 589 27#
EXEC OF CONANGA 6940#

O C C UNMISTAKABLE 946U#
CAR MISS SKYLAR 563
CAR MISS SKYLAR 098

O C C PAXTON 730P#
FCC REVOLUTION ROSE 2476
K C F BENNETT CAPSTONE
CAR MISS SKYLAR 808



BW	WW 10/10	205 wt	NR	365 wt	YR	ADG	Scrotal
78	764	684	98	1182	101	3.11	38.2
CED	BW	WW	Milk	YW	SC		
+5	+1.8	+69	+26	+130	+1.17		
Marb	RE	Fat	\$M	\$W	\$F	\$G	\$B
+3.1	+6.7	+0.15	+29	+68	+114	+37	+151

Dam has 4@ 100W. Calving ease prospect by Mentor with excellent numbers and genomic values.

68 Bull

CAR TRUE GRIT 0120

19946018

calved - 02/06/20

HILLTOP TRUE GRIT 9202#
HARRISON TRUE GRIT 4253
HARRISON MISS HILDA 9097

SITZ ALLIANCE 7544#
HILLTOP CANDY LASS 713
SITZ ONWARD 454S
CAR MISS HILDA 6102

CAR MOTIVE 423
CAR MISS PATTY 629
CAR PATTY 537#

SOO LINE MOTIVE 9016#
CAR MISS HEATHER 446#
CAR PRIMETRACKER 308#
C A R MISS EXT 434



BW	WW 10/10	205 wt	NR	365 wt	YR	ADG	Scrotal
70	716	651	93	1256	107	3.78	35.8
CED	BW	WW	Milk	YW	SC		
+8	+0.1	+57	+26	+99	+1.12		
Marb	RE	Fat	\$M	\$W	\$F	\$G	\$B
+3.8	0	+0.31	+45	+60	+59	+30	+89

Dam has 3@ 103W. Granddam is a Pathfinder. This top calving ease prospect by True Grit really gained well on test.

71 Bull

CAR LEGENDARY 086

19940766

calved - 02/02/20

QUAKER HILL RAMPAGE 0A36#
CONNEALY LEGENDARY 644L
JAZZED OF CONANGA 4660

MCC DAYBREAK#
QHF BLACKCAP 6E2 OF4V16 4355
MORGANS DIRECTION 111 9901#
JAZE OF CONANGA 234

CAR EXTENDABULL 002
CAR MISS MARIE 935
CAR MISS MARIE 522#

N BAR EMULATION EXT#
LADY VIKING 229 C A R
K C F BENNETT EFFICIENT
C A R REAL LADY 6108#



BW	WW 10/10	205 wt	NR	365 wt	YR	ADG	Scrotal
70	722	658	94	1156	99	3.11	36.7
CED	BW	WW	Milk	YW	SC		
+8	+0.3	+60	+34	+104	+0.61		
Marb	RE	Fat	\$M	\$W	\$F	\$G	\$B
+6.7	+6.1	-0.04	+63	+75	+87	+54	+141

Dam is a 12 year old cow with 106 weaning on her calves. She is backed by 5 consecutive generations of Pathfinder cows and our best cow family. Excellent carcass traits and maternal values behind this top calving ease prospect by Legendary.

69 Bull

CAR HICKORY 061

19951913

calved - 01/28/20

CAR CEDAR RIDGE 156
CAR HICKORY 547
CAR MISS MARIE 3157

COLE CREEK CEDAR RIDGE 1V#
CAR MISS LUCY 720
CAR CHINNOOK 786#
CAR MISS MARIE 943

CAR GAME DAY 406
CAR MISS JULIE 763
CAR MISS JULIE 526

JENNAWAY GAME DAY 024
CAR MISS MARIE 8212#
CAR 865 DUKE 3126
CAR MISS JULIE 0164



BW	WW 10/10	205 wt	NR	365 wt	YR	ADG	Scrotal
73	802	736	105	1147	98	2.57	40.8
CED	BW	WW	Milk	YW	SC		
+7	+0.8	+57	+23	+94	+1.86		
Marb	RE	Fat	\$M	\$W	\$F	\$G	\$B
+2.4	+1.19	+0.37	+59	+61	+66	+26	+92

Dam has 2@ 101W. Impressive balanced figures on this top calving ease prospect by Hickory.





YEARLING BULLS



72

Bull

CAR HICKORY 0128

19946019 calved - 02/08/20

CAR CEDAR RIDGE 156
CAR HICKORY 547
CAR MISS MARIE 3157

COLE CREEK CEDAR RIDGE 1V#
CAR MISS LUCY 720
CAR CHINNOOK 786#
CAR MISS MARIE 943
S A V BISMARCK 5682#
CAR MISS VIKING 9191
CAR CEDAR RIDGE 156
CAR MISS BOBETT 2101



BW	WW 10/10	205 wt	NR	365 wt	YR	ADG	Scrotal
70	735	693	99	1202	102	3.18	42.2
CED	BW	WW	Milk	YW	SC		
+14	-0.1	+56	+24	+89	+1.59		
Marb	RE	Fat	\$M	\$W	\$F	\$G	\$B
+12	+53	+0.06	+49	+61	+54	+27	+82

Dam has 2@ 102W. Sleep all night calving ease prospect with balanced numbers by Hickory.



73

Bull

CAR EFFICIENT 016

19916691 calved - 01/23/20

K C F BENNETT EFFICIENT
CAR EFFICIENT 534#
CAR MISS SUSIE 308#

CONNELY FOREFRONT#
K C F BL MISS 5522 E152
CAR DUKE 104#
C A R MISS TRENDY 449
SOO LINE MOTIVE 9016#
CAR MISS HEATHER 446#
JENNAWAY GAME DAY 024
CAR MISS MARIE 031#



BW	WW 10/10	205 wt	NR	365 wt	YR	ADG	Scrotal
74	792	699	100	1104	94	2.53	35.9
CED	BW	WW	Milk	YW	SC		
+7	-0.3	+59	+21	+100	+0.48		
Marb	RE	Fat	\$M	\$W	\$F	\$G	\$B
+59	+49	+0.39	+72	+62	+80	+46	+125

Dam has 3@ 104W. Excellent set of balanced numbers on this eye appealing calving ease prospect by Efficient.

75

Bull

CAR TRUE GRIT 0166

19951900 calved - 02/16/20

HARRISON TRUE GRIT 4253
CAR TRUE GRIT 8141
CAR MISS MARIE 582

HILLTOP TRUE GRIT 9202#
HARRISON MISS HILDA 9097
CAR JUNEAU 3236
CAR MISS MARIE 358#
JENNAWAY GAME DAY 024
CAR MISS MARIE 8212#
CAR ICEBERG 232
C A R MISS VIKING 604



CAR GAME DAY 406
CAR MISS VIKING 8181
CAR MISS VIKING 5145

BW	WW 10/10	205 wt	NR	365 wt	YR	ADG	Scrotal
67	651	661	96	1229	105	3.55	40.0
CED	BW	WW	Milk	YW	SC		
+11	+0.0	+50	+27	+91	+1.80		
Marb	RE	Fat	\$M	\$W	\$F	\$G	\$B
+37	+38	+0.19	+66	+58	+68	+36	+104

Out of a 1st calf heifer. Multiple generations of bred in calving ease on this high gaining son of True Grit 8141.

74

Bull

CAR CONSENSUS 089

19916828 calved - 02/02/20

CONNELY CONSENSUS#
BARTELS CONSENSUS 3809 649
ELISHA OF CONANGA 868 988

KMK ALLIANCE 6595 I87#
BLINDA OF CONANGA 004
G A R GRID MAKER#
ELIGENCE PLUS OF CONANGA
A A R TEN X 7008 S A#
CAR MISS AMY 121#
CAR CHINNOOK 786#
CAR MISS MARIE 0190



BW	WW 10/10	205 wt	NR	365 wt	YR	ADG	Scrotal
80	750	662	95	1134	97	2.95	37.5
CED	BW	WW	Milk	YW	SC		
+5	+1.0	+56	+25	+87	+1.04		
Marb	RE	Fat	\$M	\$W	\$F	\$G	\$B
+25	+40	+0.24	+76	+66	+59	+30	+89

Dam has 4@ 102W. A really nice potential calving ease prospect by Consensus.

76

Bull

626083902 calved - 01/13/20

HBR ENCORE 0544
CAR MISS MIKAYLA 294
CAR MISS MIKAYLA 510#

SHOSHONE ENCORE 6310
C A R MISS FOREVER 546
CAR PRIMETRACKER 308#
CAR MISS MIKAYLA 209



BW	WW 10/10	205 wt	NR	365 wt	YR	ADG	Scrotal
74	785	667	95	1089	93	2.64	37.3
CED	BW	WW	Milk	YW	SC		
na	na	na	na	na	na		
Marb	RE	Fat	\$M	\$W	\$F	\$G	\$B
na	na	na	na	na	na	na	na

We had to resend blood sample in on this bull for Genomic testing. Dam has 6@ 101W. Granddam is a 16 year old Pathfinder dam of our herd bull CAR Cha Ching 528. Nice long, smooth made calving ease prospect.



YEARLING BULLS



77 Bull

CAR JUNEAU 0176

19946028 calved - 02/18/20

KOUPAL JUNEAU 797#
LAR JUNEANU 796Y
QUEEN ELBA 763U LAR

O C C JUNEAU 807J#
KOUPALS ELBA 187
LAR ALLIANCE 64L#
QUEEN ELBA 525R LAR
H A R B WINDY 702 JH#
EILEENMERE DIAMOND 161 L A R
SITZ VALUE 7097#
LADY VIKING 230 C A R#



LAR WINDY 64 4235#
CAR MISS SUSIE 060#
CAR SUSIE 101

BW	WW 10/10	205 wt	NR	365 wt	YR	ADG	Scrotal
95	783	740	107	1217	104	2.98	37.6
CED	BW	WW	Milk	YW	SC		
-11	+6.6	+84	+28	+134	+1.36		
Marb	RE	Fat	\$M	\$W	\$F	\$G	\$B
+39	+26	+0.18	+32	+70	+95	+35	+129

Dam is an 11 yr old Pathfinder cow with 9@ 108W. Great granddam is a foundation Pathfinder donor Viking 230 cow. Dam produced CAR Next Step 889, who sold to Crescent Creek Angus in Canada. Top end cow family behind this herdbull prospect with a very impressive performance EPD profile.

80 Bull

CAR DURABULL 0102

19951890 calved - 02/03/20

CAR 865 DUKE 3200
CAR DURABULL LINE 575
CAR MISS MARIE 3184#

CAR DUKE 865
CAR LADY DIANA 503
CAR CHINNOOK 1119
CAR MISS MARIE 110
CAR HERO 631
CAR MISS CAROLINE 7217
CAR BUSHWACKER 601
CAR MISS TARESA 524#



CAR HERO 9143
CAR MISS TARESA 1198
CAR MISS TARESA 908

BW	WW 10/10	205 wt	NR	365 wt	YR	ADG	Scrotal
73	748	661	95	1146	98	3.03	37.0
CED	BW	WW	Milk	YW	SC		
+4	+2.6	+45	+21	+69	+0.75		
Marb	RE	Fat	\$M	\$W	\$F	\$G	\$B
-.11	+.57	+.048	+59	+43	+47	+14	+61

Dam is a perfectly uddered 10 yr old cow with 8@ 100W. Great granddam is still producing at 16 years old. Lot of high powered cows behind this top calving ease prospect by Durabull.

78 Bull

CAR REVOLUTION 085

19946038 calved - 02/02/20

SVR REVOLUTION 4129
FOOS REVOLUTION 243
FOOS HAZEL 243

CANDOLIER FOREVER 376#
S C C ENCHANTRESS 3F1 X412
CROOK MT REALLY WINDY 8834
N F HAZEL 7461-8#
LAR WINDY 64 4235#
CAR MISS TARESA 663#
CAR TRACKER 321
CAR MISS DIANA 2152



CAR INCREDIBULL 080
CAR MISS DIANA 497
CAR MISS DIANA 6149#

BW	WW 10/10	205 wt	NR	365 wt	YR	ADG	Scrotal
84	746	659	94	1160	99	3.13	38.0
CED	BW	WW	Milk	YW	SC		
+11	-0.3	+43	+21	+69	+1.12		
Marb	RE	Fat	\$M	\$W	\$F	\$G	\$B
+43	+31	+0.16	+60	+47	+51	+38	+88

Lots of long term proven bred in longevity in this outcross calving ease prospect by Revolution. Revolution has those old bloodlines that have stood the test of time.

81 Bull

CAR REVOLUTION 062

19951914 calved - 01/28/20

SVR REVOLUTION 4129
FOOS REVOLUTION 243
FOOS HAZEL 243

CANDOLIER FOREVER 376#
S C C ENCHANTRESS 3F1 X412
CROOK MT REALLY WINDY 8834
N F HAZEL 7461-8#
JENNAWAY GAME DAY 024
CAR MISS MARIE 8212#
CAR MEDICINE MAN 640
CAR MISS AMY 600



CAR GAME DAY 406
CAR MISS AMY 686
CAR MISS AMY 8113

BW	WW 10/10	205 wt	NR	365 wt	YR	ADG	Scrotal
76	796	709	101	1117	95	2.55	37.5
CED	BW	WW	Milk	YW	SC		
+5	+0.9	+39	+26	+58	+0.69		
Marb	RE	Fat	\$M	\$W	\$F	\$G	\$B
+2.5	0	+0.033	+46	+47	+68	+24	+92

Dam has 2@ 104W. Another eye catching Revolution son with an impressive weaning weight that has bred in calving ease. This bull is in the top 1% of the breed for tenderness. Talk about adding value to the calves you sell.

79 Bull

CAR CHA CHING 014

19916673 calved - 01/22/20

BARSTOW CASH#
CAR CHA CHING 528
CAR MISS MIKAYLA 510#

SITZ DASH 10277#
BARSTOW QUEEN W16
CAR PRIMETRACKER 308#
CAR MISS MIKAYLA 209
CAR 461 TRACKER 653
CAR MISS VIKING 4110#
CAR PRIMETRACKER 308#
C A R MARIE 841



CAR 653 TRACKER 060
CAR MISS MARIE 4194
CAR MISS MARIE 770

BW	WW 10/10	205 wt	NR	365 wt	YR	ADG	Scrotal
74	807	696	110	1154	102	2.86	37.6
CED	BW	WW	Milk	YW	SC		
+9	+0.4	+48	+16	+78	+0.57		
Marb	RE	Fat	\$M	\$W	\$F	\$G	\$B
+20	+31	+0.042	+46	+42	+64	+25	+89

Dam has 4@ 106WR. Excellent weaning weight on this top end Cha Ching calving ease prospect.





YEARLING BULLS



82 Bull

CAR LEGENDARY 0105

19940719 calved - 02/04/20

QUAKER HILL RAMPAGE 0A36#
CONNELY LEGENDARY 644L
JAZZED OF CONANGA 4660

MCC DAYBREAK#
QHF BLACKCAP 6E2 OF4V16 4355
MORGANS DIRECTION 111 9901#
JAZE OF CONANGA 234

BARTELS CONSENSUS 3809 649
CAR MISS HILDA 8127
CAR MISS HILDA 741

CONNELY CONSENSUS#
ELISHA OF CONANGA 868 988
A A R REALLY WINDY 1205#
CAR MISS HILDA 529



BW	WW 10/10	205 wt	NR	365 wt	YR	ADG	Scrotal
68	685	674	98	1170	100	3.10	37.6
CED	BW	WW	Milk	YW	SC		
+11	+1.5	+72	+20	+116	+0.51		
Marb	RE	Fat	\$M	\$W	\$F	\$G	\$B
+0.63	+0.67	-0.09	+0.67	+0.73	+0.69	+0.54	+1.23

Out of a 1st calf heifer. Look at the impressive numbers and carcass values on this top calving ease prospect by Legendary.

85 Bull

CAR TRUE GRIT 0207

19951910 calved - 02/26/20

HILLTOP TRUE GRIT 9202#
HARRISON TRUE GRIT 4253
HARRISON MISS HILDA 9097

SITZ ALLIANCE 7544#
HILLTOP CANDY LASS 713
SITZ ONWARD 454S
CAR MISS HILDA 6102

CAR EFFICIENT 534#
CAR MISS WENDY 462
CAR MISS WENDY 950

K C F BENNETT EFFICIENT
CAR MISS SUSIE 308#
LAR ALLIANCE 64L#
CAR MISS WENDY 4121



BW	WW 10/10	205 wt	NR	365 wt	YR	ADG	Scrotal
80	725	678	107	1158	103	3.00	39.3
CED	BW	WW	Milk	YW	SC		
+8	+1.2	+70	+22	+120	+1.84		
Marb	RE	Fat	\$M	\$W	\$F	\$G	\$B
+0.13	+0.17	+0.014	+0.73	+0.72	+0.78	+0.22	+1.00

Dam has 4@ 103W. Excellent calving ease prospect by True Grit backed by one of our best cow families.

83 Bull

CAR BUTKUS 0178

19946029 calved - 02/19/20

SANDPOINT BUTKUS X797#
GDAR BUTKUS 5217
GDAR PAMELA EVER 2115#

S A V FINAL ANSWER 0035#
G A R GRID MAKER 4603
GDAR GAME DAY 449#
GDAR PAMELA EVER 0263#

CAR CHINNOOK 786#
CAR MISS MARIE 7113
CAR MISS MARIE 544

A A R REALLY WINDY 1205#
CAR MISS MARIE 5109
CAR TRACKER 321
CAR MISS MARIE 362



BW	WW 10/10	205 wt	NR	365 wt	YR	ADG	Scrotal
72	737	713	103	1148	98	2.72	36.6
CED	BW	WW	Milk	YW	SC		
+11	+0.5	+57	+28	+87	+0.66		
Marb	RE	Fat	\$M	\$W	\$F	\$G	\$B
+0.75	+0.66	+0.016	+0.99	+0.72	+0.71	+0.57	+1.28

Dam has 2 @ 102 weaning. Granddam is 16 and one of the first cows to calve this year. Excellent EPD profile and carcass values on this top calving ease prospect by Butkus.

86 Bull

CAR MOTIVE 055

19916771 calved - 01/27/20

SOO LINE MOTIVE 9016#
CAR MOTIVE 416
CAR PRIMROSE LADY 691

HF KODIAK 5R
TLA BEAUTY 5R
CAR PRIMTRACKER 308#
CAR PRIMROSE LADY 9118

VERMILION X FACTOR#
CAR MISS ROBERTA 222
CAR MISS ROBERTA 7117

NICHOLS EXTRA K205#
VERMILION LADY 2888
CAR PRIMRACKER 511
CAR MISS ROBERTA 403



BW	WW 10/10	205 wt	NR	365 wt	YR	ADG	Scrotal
70	746	649	102	1172	104	3.27	37.3
CED	BW	WW	Milk	YW	SC		
+13	-0.7	+47	+19	+97	+1.02		
Marb	RE	Fat	\$M	\$W	\$F	\$G	\$B
+0.33	+0.29	+0.042	+0.40	+0.39	+0.85	+0.31	+1.15

Dam has 6@ 105W. Cow family produced herdbulls CAR Tracker 904 and CAR Resource 610. This top 416 Motive son has the performance and maternal genetics to give you a top set of calves.

84 Bull

CAR TEN X 087

19925621 calved - 02/02/20

A A R TEN X 7008 S A#
CAR TEN X 107
CAR MISS AMY 121#

MYTTY IN FOCUS#
A A R LADY KELTON 5551#
CAR TRACKER 904#
CAR MISS AMY 998

CAR DURABULL LINE 575
CAR LADY TRAVELER 834
CAR LADY TRAVELER 9209

CAR 865 DUKE 3200
CAR MISS MARIE 3184#
CAR HERO 560
C A R LADY TRAVELER 451#



BW	WW 10/10	205 wt	NR	365 wt	YR	ADG	Scrotal
73	725	707	112	1203	107	3.10	40.5
CED	BW	WW	Milk	YW	SC		
+5	+1.5	+58	+33	+80	+1.63		
Marb	RE	Fat	\$M	\$W	\$F	\$G	\$B
+0.18	+0.29	+0.027	+0.74	+0.76	+0.59	+0.25	+0.84

Out of 1st calf heifer. Top calving ease prospect with impressive performance ratios on this top Ten X 107 son.

87 Bull

CAR REVOLUTION 093

19954778 calved - 02/03/20

SVR REVOLUTION 4129
FOOS REVOLUTION 243
FOOS HAZEL 243

CANDOLIER FOREVER 376#
S C C ENCHANTRESS 3F1 X412
CROOK MT REALLY WINDY 8834
N F HAZEL 7461-8#

S A V RESOURCE 1441#
CAR MISS FOREVER 667
CAR MISS FOREVER 346

RITO 707 OF IDEAL 3407 7075
S A V BLACKCAP MAY 4136
CAR TIMELINE 072
CAR MISS FOREVER 866#



BW	WW 10/10	205 wt	NR	365 wt	YR	ADG	Scrotal
73	711	643	100	1158	100	3.22	35.2
CED	BW	WW	Milk	YW	SC		
+3	+3.0	+56	+27	+95	+1.05		
Marb	RE	Fat	\$M	\$W	\$F	\$G	\$B
+0.05	+0.64	-0.019	+0.61	+0.60	+0.73	+0.27	+1.01

Excellent fleshing ability and udder quality behind this calving ease prospect by Revolution.



YEARLING BULLS



88

Bull

CAR ICEBERG 050

19916767

calved - 01/27/20

LOST LAKE ICEBERG 3438#
CAR ICEBERG 232
C A R MISS JOSEPHINE 726

J A R COOL HAND LUKE
ANNE OF L L R 1123
C A R TRACKER 401
C A R MISS REAL RITO 3148
G A R RETAIL PRODUCT#
EXECUTA OF CONANGA 939#
CAR DUKE 504
C A R MISS SUSIE 798



BW	WW 10/10	205 wt	NR	365 wt	YR	ADG	Scrotal
77	719	627	99	1158	103	3.32	38.3
CED	BW	WW	Milk	YW	SC		
+6	+1.2	+33	+28	+64	+1.88		
Marb	RE	Fat	\$M	\$W	\$F	\$G	\$B
+4.7	+4.7	-0.04	+54	+39	+63	+43	+106

Dam is an awesome looking Mentor daughter who descends from generations of easy keeping beautifully uddered cows that last a long time. Excellent performance and maternal package behind this top calving ease prospect by 232 Iceberg.



89

Bull

CAR BUTKUS 0210

19946031

calved - 02/27/20

SANDPOINT BUTKUS X797#
GDAR BUTKUS 5217
GDAR PAMELA EVER 2115#

S A V FINAL ANSWER 0035#
G A R GRID MAKER 4603
GDAR GAME DAY 449#
GDAR PAMELA EVER 0263#
A A R ALLIANCE 0506
ER BARBARA P007
CAR STEWARD 076
CAR MISS CAROLINE 1109



BW	WW 10/10	205 wt	NR	365 wt	YR	ADG	Scrotal
74	740	730	115	1170	104	2.75	38.8
CED	BW	WW	Milk	YW	SC		
+5	+2.2	+74	+28	+130	+1.45		
Marb	RE	Fat	\$M	\$W	\$F	\$G	\$B
+5.8	+5.8	+0.36	+57	+77	+109	+47	+156

Dam has 2@ 111W. High indexing calving ease prospect by Butkus with impressive performance numbers and genomic profile.

92

Bull

CAR REMARKABLE 015

19916685

calved - 01/22/20

CAR REMARKABLE 640
CAR REMARKABLE 821
CAR MISS HEATHER 5167#

S A V RESOURCE 1441#
CAR MISS MARIE 769#
CAR CEDAR RIDGE 156
CAR MISS HEATHER 2197
CAR INCREDIBULL 080
CAR MISS MARIE 7170
COLE CREEK CEDAR RIDGE 1V#
CAR PRIMROSE LADY 091#



BW	WW 10/10	205 wt	NR	365 wt	YR	ADG	Scrotal
77	769	679	97	1156	99	2.98	40.8
CED	BW	WW	Milk	YW	SC		
+13	+0.2	+55	+27	+92	+2.12		
Marb	RE	Fat	\$M	\$W	\$F	\$G	\$B
+3.1	+5.7	+0.09	+76	+64	+55	+36	+91

Dam has 2 generations of Pathfinder cows behind her. Another top calving ease prospect by Remarkable.

91

Bull

CAR CAPITALIST 0174

19946027

calved - 02/18/20

CONNEALY CAPITALIST 028#
DIAMOND CAPITALIST B011
DIAMOND BLACK LADY 7206#

S A V FINAL ANSWER 0035#
PRIDES PITA OF CONANGA 8821
DIAMOND PAYWEIGHT 738N
DIAMOND BLACK LADY M281
A A R TEN X 7008 S A#
CAR MISS AMY 121#
CAR TRACKER 904#
CAR MISS CAROLINE 436



BW	WW 10/10	205 wt	NR	365 wt	YR	ADG	Scrotal
70	706	661	104	1165	103	3.15	37.2
CED	BW	WW	Milk	YW	SC		
+9	-0.3	+58	+17	+96	+1.79		
Marb	RE	Fat	\$M	\$W	\$F	\$G	\$B
+2.3	+3.9	+0.14	+59	+56	+68	+30	+97

Dam is a Pathfinder with 3@ 108W. This top end calving ease prospect by Capitalist has an excellent set of figures.

93

Bull

CAR REVOLUTION 0145

19946022

calved - 02/10/20

SVR REVOLUTION 4129
FOOS REVOLUTION 243
FOOS HAZEL 243

CANDOLIER FOREVER 376#
S C C ENCHANTRESS 3F1 X412
CROOK MT REALLY WINDY 8834
N F HAZEL 7461-8#
S A V PIONEER 7301#
SITZ TW MISS VIKING 487
LAR WINDY 64 423S#
CAR MISS WILMA 248



BW	WW 10/10	205 wt	NR	365 wt	YR	ADG	Scrotal
85	775	696	100	1088	93	2.45	40.3
CED	BW	WW	Milk	YW	SC		
+8	+2.0	+45	+24	+72	+1.50		
Marb	RE	Fat	\$M	\$W	\$F	\$G	\$B
+4.2	+2.0	+0.045	+76	+49	+42	+33	+75

Dam is a Pathfinder cow with 4@ 104W. Excellent long made, eye catching son of Revolution. Outcross genetics with top 6% of the breed for tenderness.



YEARLING BULLS



94

Bull

CAR REMARKABLE 039

19916730

calved - 01/25/20

S A V RESOURCE 1441#
CAR REMARKABLE 640
CAR MISS MARIE 769#

RITO 707 OF IDEAL 3407 7075
S A V BLACKCAP MAY 4136
CAR EFFICIENT 534#
CAR MISS MARIE 5164
CAR TRACKER 904#
CAR MISS LINDA 033
MC BEE WMR SUPER X 745#
C A R LADY 011 RITO 280

CAR PRIMETRACKER 308#
CAR MISS MIKAYLA 510#
CAR MISS MIKAYLA 209



BW	WW 10/10	205 wt	NR	365 wt	YR	ADG	Scrotal
82	743	668	96	1116	95	2.80	39.1
CED	BW	WW	Milk	YW	SC		
+6	+1.1	+58	+25	+94	+1.12		
Marb	RE	Fat	\$M	\$W	\$F	\$G	\$B
+0.46	+0.18	+0.066	+65	+64	+61	+33	+95

Dam is a 16 year old Pathfinder PrimeTracker daughter and dam of the herd sire CAR Cha Ching 528. Top end maternal package with proven bred in longevity.

97

Bull

CAR IMPRESSION 0213

19946032

calved - 02/27/20

CONNEALY IMPRESSION#
BARTELS IMPRESSION C116
K C F MISS CONSENSUS Y300

CONNEALY REFLECTION#
PEARL PAMMY OF CONANGA 194
CONNEALY CONSENSUS#
K C F MISS 589 M359#
WMR TIMELESS 458#
GDAR BLACKCAP LADY 071
BARSTOW CASH#
CAR MISS MARIE 739

GDAR REGULATOR 364
CAR MISS MARIE 7116
CAR MISS MARIE 586



BW	WW 10/10	205 wt	NR	365 wt	YR	ADG	Scrotal
80	746	736	116	1141	101	2.53	37.8
CED	BW	WW	Milk	YW	SC		
+7	+2.9	+71	+23	+125	+1.08		
Marb	RE	Fat	\$M	\$W	\$F	\$G	\$B
+0.54	+0.46	+0.047	+64	+67	+94	+42	+137

Dam has 2@ 112W. Top weaning index on this Impression son with impressive number profile.

95

Bull

CAR REGULATOR 0197

19951905

calved - 02/23/20

GDAR REGULATOR 364
CAR REGULATOR 769
CAR MISS DIANNA 5107

WMR TIMELESS 458#
GDAR BLACKCAP LADY 071
CONNEALY THUNDER#
CAR MISS DIANA 3134
CAR DUKE 504
CAR MISS DIANA 6165#
REDLAND RAINMAKER 3856
C A R MISS MARIE 701

CAR 504 DUKE 898
CAR MISS MARIE 846
CAR MISS MARIE 0188#



BW	WW 10/10	205 wt	NR	365 wt	YR	ADG	Scrotal
65	670	689	109	1187	105	3.11	38.2
CED	BW	WW	Milk	YW	SC		
+12	-2.0	+54	+25	+94	+1.58		
Marb	RE	Fat	\$M	\$W	\$F	\$G	\$B
+0.32	+0.32	+0.037	+71	+64	+67	+31	+98

Out of a 1st calf heifer. Granddam is a Pathfinder, and granddaughter of our foundation 449 cow. Excellent sleep all night calving ease herdbull prospect by Regulator 769.

98

Bull

CAR HOMESTRETCH 024

19916713

calved - 01/24/20

B BAR WINDY 79
B BAR HOMESTRETCH 3047
B BAR QUEEN 304#

CROOK MT REALLY WINDY 141#
B BAR LADY JEWEL 116#
SITZ RLS ALLIANCE 7164
B BAR QUEEN 557#
COLE CREEK CEDAR RIDGE 1V#
CAR MISS LUCY 720
CAR INCREDIBULL 8136
CAR MISS JULIE 8108

CAR CEDAR RIDGE 156
CAR MISS JULIE 503
CAR MISS JULIE 0125#



BW	WW 10/10	205 wt	NR	365 wt	YR	ADG	Scrotal
83	746	648	93	1158	99	3.19	35.2
CED	BW	WW	Milk	YW	SC		
+6	+1.5	+58	+28	+100	+1.03		
Marb	RE	Fat	\$M	\$W	\$F	\$G	\$B
+0.05	+0.29	+0.038	+56	+65	+69	+18	+87

Nice set of balanced numbers on this eye appealing Homestretch son.

96

Bull

CAR RARE FIND 068

19942334

calved - 01/29/20

BASIN PAYWEIGHT 1682#
JACS RARE FIND 6503
CRAZY K BLACKCAP 4297

BASIN PAYWEIGHT 006S#
21AR O LASS 7017
A A R TEN X 7008 S A#
FOX RUN BLACKCAP 7141
S A V RESOURCE 1441#
CAR MISS MARIE 769#
OX BOW FORWARD 9263
CAR PRIMROSE LADY 921

CAR REMARKABLE 640
CAR PRIMROSE LADY 829
CAR PRIMROSE LADY 1194



BW	WW 10/10	205 wt	NR	365 wt	YR	ADG	Scrotal
72	671	656	103	1218	108	3.51	38.4
CED	BW	WW	Milk	YW	SC		
+4	+3.3	+79	+24	+140	+2.05		
Marb	RE	Fat	\$M	\$W	\$F	\$G	\$B
+0.46	+0.43	+0.052	+70	+74	+104	+38	+142

Out of a 1st calf heifer. Excellent top number package and genomics on this top end Rare Find bull. Outcross genetics for our customers.

99

Bull

CAR HICKORY 079

19946037

calved - 02/01/20

CAR CEDAR RIDGE 156
CAR HICKORY 547
CAR MISS MARIE 3157

COLE CREEK CEDAR RIDGE 1V#
CAR MISS LUCY 720
CAR CHINNOCK 786#
CAR MISS MARIE 943
LAR JUNEANU 796Y
CAR MISS DIANA 0101#
E 7 GURU 1375
CAR MISS WENDY 1110#

CAR JUNEANU 3236
CAR MISS WENDY 7114
CAR MISS WENDY 4121



BW	WW 10/10	205 wt	NR	365 wt	YR	ADG	Scrotal
86	836	773	111	1119	96	2.16	39.0
CED	BW	WW	Milk	YW	SC		
-3	+4.3	+82	+14	+124	+2.01		
Marb	RE	Fat	\$M	\$W	\$F	\$G	\$B
+0.28	+0.35	-0.004	+50	+66	+77	+33	+110

Dam has 2@ 100W. Super easy fleshing cow family behind this top Hickory son with a heavy weaning weight. Top performance EPD's on this good bull.



YEARLING BULLS



100 Bull CAR LEGENDARY 027

19940741 calved - 01/24/20

QUAKER HILL RAMPAGE 0A36#
CONNEALY LEGENDARY 644L
 JAZZED OF CONANGA 4660

MCC DAYBREAK#
 QHF BLACKCAP 6E2 OF4V16 4355
 MORGANS DIRECTION 111 9901#
 JAZE OF CONANGA 234

JENNAWAY GAME DAY 024
 CAR MISS MARIE 8212#
 SOO LINE MOTIVE 9016#
 CAR MISS MIKAYLA 9132



BW	WW 10/10	205 wt	NR	365 wt	YR	ADG	Scrotal
65	698	672	106	1154	102	3.01	39.2
CED	BW	WW	Milk	YW	SC		
+8	+0.1	+51	+28	+88	+1.04		
Marb	RE	Fat	\$M	\$W	\$F	\$G	\$B
+21	+66	-006	+60	+60	+82	+34	+116

Dam has 2@ 108W. A sleep all night calving ease prospect by Legendary.

103 Bull CAR IMPRESSION 0180

19946030 calved - 02/19/20

CONNEALY IMPRESSION#
BARTELS IMPRESSION C116
 K C F MISS CONSENSUS Y300

CONNEALY REFLECTION#
 PEARL PAMMY OF CONANGA 194
 CONNEALY CONSENSUS#
 K C F MISS 589 M359#

CAR PRIMETRACKER 802
CAR LADY DIANA 3137
 CAR LADY DIANA 9199

CAR PRIMETRACKER 308#
 C A R MISS RAINDANCER 421#
 CAR PRIMERACKER 511
 CAR LADY DIANA 116#



BW	WW 10/10	205 wt	NR	365 wt	YR	ADG	Scrotal
78	823	754	109	1140	98	2.41	38.0
CED	BW	WW	Milk	YW	SC		
+1	+3.6	+51	+23	+85	+1.69		
Marb	RE	Fat	\$M	\$W	\$F	\$G	\$B
+43	+30	+030	+57	+45	+74	+36	+110

Four generations of Pathfinder cows behind this top Impression son with a heavy weaning weight.

101 Bull CAR REVOLUTION 043

19954777 calved - 01/26/20

SVR REVOLUTION 4129
FOOS REVOLUTION 243
 FOOS HAZEL 243

CANDOLIER FOREVER 376#
 S C C ENCHANTRESS 3F1 X412
 CROOK MT REALLY WINDY 8834
 N F HAZEL 7461-8#

CAR TRACKER 461
 C A R PRIMROSE LADY 723
 CAR SUPER X 223
 CAR MARIE 239



BW	WW 10/10	205 wt	NR	365 wt	YR	ADG	Scrotal
80	723	652	103	1094	97	2.76	39.7
CED	BW	WW	Milk	YW	SC		
+10	-0.9	+32	+21	+47	+1.39		
Marb	RE	Fat	\$M	\$W	\$F	\$G	\$B
+27	-09	+070	+56	+38	+40	+21	+61

Dam is a 13 year old Tracker 653 daughter from a herdbull producing cow family. Outcross calving ease genetics on this eye catching Revolution son.

104 Bull CAR CHA CHING 053

19951912 calved - 01/27/20

BARSTOW CASH#
CAR CHA CHING 528
 CAR MISS MIKAYLA 510#

SITZ DASH 10277#
 BARSTOW QUEEN W16
 CAR PRIMETRACKER 308#
 CAR MISS MIKAYLA 209

SOO LINE MOTIVE 9016#
 CAR PRIMROSE LADY 691
 CAR TIMELINE 094
 CAR MISS DIANA 6165#



BW	WW 10/10	205 wt	NR	365 wt	YR	ADG	Scrotal
75	754	672	96	1150	98	2.99	37.5
CED	BW	WW	Milk	YW	SC		
-1	+2.2	+52	+18	+88	+0.65		
Marb	RE	Fat	\$M	\$W	\$F	\$G	\$B
+11	+50	+019	+55	+46	+61	+25	+86

Dam is a young productive 416 Motive daughter with 3@ 100W. This top end eye appealing Cha Ching son is a calving ease prospect.

102 Bull CAR MENTOR 022

626084034 calved - 01/24/20

G A R RETAIL PRODUCT#
CONNEALY MENTOR 7374#
 EXECUTA OF CONANGA 939#

G A R PRECISION 1680#
 G A R EXT 4927
 JAUER 353 TRAVELER 589 27#
 EXEC OF CONANGA 6940#

CAR TIMELINE 072

CAR CHINNOCK 786#
 CAR MISS TARESA 755#



BW	WW 10/10	205 wt	NR	365 wt	YR	ADG	Scrotal
65	752	687	100	1188	100	3.13	36.7
CED	BW	WW	Milk	YW	SC		
na	na	na	na	na	na		
Marb	RE	Fat	\$M	\$W	\$F	\$G	\$B
na	na	na	na	na	na	na	na

This bull sells as a commercial. His dam will not DNA to any sire. She is backed by 3 consecutive generations of Pathfinder cows. Excellent calving ease prospect with an impressive genomic evaluation.

105 Bull CAR HOMESTRETCH 0139

19946021 calved - 02/09/20

B BAR WINDY 79
B BAR HOMESTRETCH 3047
 B BAR QUEEN 304#

CROOK MT REALLY WINDY 141#
 B BAR LADY JEWEL 116#
 SITZ RLS ALLIANCE 7164
 B BAR QUEEN 557#

A A R REALLY WINDY 1205#
 CAR MISS MARIE 5109
 CAR EFFICIENT 648
 CAR MISS MARIE 699



BW	WW 10/10	205 wt	NR	365 wt	YR	ADG	Scrotal
80	734	658	104	1152	102	3.09	38.2
CED	BW	WW	Milk	YW	SC		
+3	+3.5	+61	+16	+99	+1.28		
Marb	RE	Fat	\$M	\$W	\$F	\$G	\$B
+04	+29	+041	+61	+45	+51	+17	+68

Dam produced our resident herdbull CAR Hickory 547. This top Homestretch son has a super cow family behind him.



YEARLING BULLS



106 Bull

CAR REVOLUTION 033

19946033

calved - 01/25/20

SVR REVOLUTION 4129
FOOS REVOLUTION 243
FOOS HAZEL 243

CANDOLIER FOREVER 376#
S C C ENCHANTRESS 3F1 X412
CROOK MT REALLY WINDY 8834
N F HAZEL 7461-8#

CAR PRIMETRACKER 512
CAR MISS MARIE 8212#
CAR MISS MARIE 5128

CAR PRIMETRACKER 308#
CAR PRIMROSE LADY 9118
CAR TRACKER 321
CAR MARIE 022#



BW	WW 10/10	205 wt	NR	365 wt	YR	ADG	Scrotal
65	722	648	94	1126	97	2.99	38.1
CED	BW	WW	Milk	YW	SC		
+15	-1.7	+23	+27	+41	+0.67		
Marb	RE	Fat	\$M	\$W	\$F	\$G	\$B
+0.4	+0.08	+0.070	+48	+36	+50	+12	+62

Dam is a perfectly made 13 year old Pathfinder cow that produced our herdbull CAR Game Day 406, who left us with an outstanding group of daughters we treasure. Buy this long made calving ease prospect by Revolution and keep every one of his daughters.

109 Bull

CAR LEGENDARY 0116

19940712

calved - 02/06/20

QUAKER HILL RAMPAGE 0A36#
CONNEALY LEGENDARY 644L
JAZZED OF CONANGA 4660

MCC DAYBREAK#
QHF BLACKCAP 6E2 OF4V16 4355
MORGANS DIRECTION 111 9901#
JAZE OF CONANGA 234

CAR UNMISTAKABLE 556
CAR MISS MARIE 858
CAR MISS MARIE 031#

O C C UNMISTAKABLE 946U#
CAR LADY DIANA 9145#
CAR INCREDIBULL 820
CAR MISS MARIE 483



BW	WW 10/10	205 wt	NR	365 wt	YR	ADG	Scrotal
70	697	688	100	1067	92	2.37	35.6
CED	BW	WW	Milk	YW	SC		
+4	+1.5	+61	+19	+91	+0.29		
Marb	RE	Fat	\$M	\$W	\$F	\$G	\$B
+0.81	+0.91	-0.011	+53	+61	+73	+65	+138

Out of a 1st calf heifer. Granddam is a 11 year old Pathfinder cow. This Legendary son has top end carcass values and a great set of numbers for a calving ease herdbull prospect.

107 Bull

CAR HICKORY 0147

19946023

calved - 02/10/20

CAR CEDAR RIDGE 156
CAR HICKORY 547
CAR MISS MARIE 3157

COLE CREEK CEDAR RIDGE 1V#
CAR MISS LUCY 720
CAR CHINNOOK 786#
CAR MISS MARIE 943

CAR INCREDIBULL 080
CAR MISS AMY 5152
CAR MISS AMY 7169

LAR WINDY 64 4235#
CAR MISS TARESA 663#
CAR TRAVELER 465
CAR MISS AMY 121#



BW	WW 10/10	205 wt	NR	365 wt	YR	ADG	Scrotal
90	746	671	106	1108	98	2.73	37.8
CED	BW	WW	Milk	YW	SC		
0	+3.8	+56	+29	+89	+1.45		
Marb	RE	Fat	\$M	\$W	\$F	\$G	\$B
+0.43	+0.22	+0.004	+60	+58	+65	+37	+103

Dam has 4@ 101W. Great Granddam produced ABS bull CAR Duke 104. This big ribbed, stout, Hickory son has a super herdbull producing cow family behind him.

110 Bull

CAR CAPITALIST 0203

19951908

calved - 02/25/20

LD CAPITALIST 316
PINE COULEE CAPITALIST F339
PINE COULEE BLACKCAP Y1#

CONNEALY CAPITALIST 028#
LD DIXIE ERICA 2053
PINE COULEE POWERHOUSE W112
PINE COULEE BLACKCAP G 3Z71#

CAR REMARKABLE 640
CAR MISS JULIE 826
CAR MISS JULIE 3144

S A V RESOURCE 1441#
CAR MISS MARIE 769#
CAR CHINNOOK 786#
CAR MISS JULIE 891



BW	WW 10/10	205 wt	NR	365 wt	YR	ADG	Scrotal
74	702	721	114	1190	106	2.93	35.2
CED	BW	WW	Milk	YW	SC		
+10	+1.4	+64	+31	+106	+0.96		
Marb	RE	Fat	\$M	\$W	\$F	\$G	\$B
+0.53	+0.20	+0.042	+49	+73	+71	+39	+110

Out of 1st calf heifer. Cow family has produced the high gaining bulls at both Midland and Treasure bull tests. Very complete calving ease prospect on this top Capitalist son.

108 Bull

CAR HOMESTRETCH 042

19916748

calved - 01/26/20

B BAR WINDY 79
B BAR HOMESTRETCH 3047
B BAR QUEEN 304#

CROOK MT REALLY WINDY 141#
B BAR LADY JEWEL 116#
SITZ RLS ALLIANCE 7164
B BAR QUEEN 557#

CAR DUKE 865
CAR MISS ROBERTA 169
CAR MISS ROBERTA 068

CAR DUKE 504
CAR MISS MARIE 300
C A R FERDINAND 832
C A R MISS ROBERTA 791



BW	WW 10/10	205 wt	NR	365 wt	YR	ADG	Scrotal
77	767	667	95	1099	93	2.70	39.3
CED	BW	WW	Milk	YW	SC		
+2	+1.5	+43	+29	+75	+1.31		
Marb	RE	Fat	\$M	\$W	\$F	\$G	\$B
+0.31	+0.15	+0.043	+65	+50	+60	+28	+87

Dam is a 10 year old easy keeping 865 Duke daughter with 7@ 100W. Excellent cow family behind this eye catching calving ease prospect by Homestretch. Top 3% of breed for tenderness.

HOW MUCH MORE CAN A RANCHER AFFORD TO PAY FOR A TOP BULL?

Increase in weaning weight from top performing bull per calf.

X Number of cows covered per year

X Number of years used

X Selling price of calves

= Extra you can afford to pay for a better bull

Example: A bull who can add 30 lbs to your weaning weights X 25 cows per year X 4 years of use X \$1.50 per lb = \$4,500

This example shows that this bull is worth \$4500 more than the average bull that keeps your weaning weights the same.

This formula does not take into account the extra value realized through genetics that have been developed to survive and excel in a low input environment. The replacement heifers that have that extra fertility and bred in longevity to give you those extra years of production. The feedlot gain and improved carcass quality that helps you to market your calves. All of these items add to your bottom line and help your outfit to survive and prosper. Put your own figures into this formula and see what you come up with.



YEARLING BULLS



111

Bull

CAR ICEBERG 036

19916727

calved - 01/25/20

LOST LAKE ICEBERG 3438#
CAR ICEBERG 232
C A R MISS JOSEPHINE 726

J A R COOL HAND LUKE
ANNE OF L L R 1123
C A R TRACKER 401
C A R MISS REAL RITO 3148
COLE CREEK CEDAR RIDGE 1V#
CAR MISS LUCY 720
CAR PRIMETRACKER 802
CAR MISS MARIE 9168



BW	WW 10/10	205 wt	NR	365 wt	YR	ADG	Scrotal
88	704	614	88	1172	100	3.49	39.2
CED	BW	WW	Milk	YW	SC		
+5	+3.1	+34	+23	+65	+1.68		
Marb	RE	Fat	\$M	\$W	\$F	\$G	\$B
+0.5	+0.2	+0.09	+48	+25	+69	+17	+86

Dam is a Pathfinder with 5@ 106W. This top Iceberg son gained really well on test. Outstanding cow family behind this bull.



112

Bull

CAR BUTKUS 0163

19946025

calved - 02/15/20

SANDPOINT BUTKUS X797#
GDAR BUTKUS 5217
GDAR PAMELA EVER 2115#

S A V FINAL ANSWER 0035#
G A R GRID MAKER 4603
GDAR GAME DAY 449#
GDAR PAMELA EVER 0263#
K C F BENNETT EFFICIENT
CAR MISS SUSIE 308#
CAR INCREDIBULL 820
CAR MISS MARIE 483



BW	WW 10/10	205 wt	NR	365 wt	YR	ADG	Scrotal
74	687	661	95	1125	96	2.90	38.4
CED	BW	WW	Milk	YW	SC		
+8	+1.5	+55	+33	+99	+0.82		
Marb	RE	Fat	\$M	\$W	\$F	\$G	\$B
+0.65	+0.32	+0.034	+87	+70	+81	+46	+127

Granddam is an 11 yr old Pathfinder. Excellent numbers and carcass values on this outcross calving ease prospect by Butkus.

114

Bull

CAR MOTIVE 0159

19951899

calved - 02/13/20

CAR MOTIVE 416
CAR MOTIVE 773
CAR MISS FOREVER 510#

SOO LINE MOTIVE 9016#
CAR PRIMROSE LADY 691
CAR INCREDIBULL 080
CAR MISS FOREVER 017#
HF KODIAK 5R
TLA BEAUTY 5R
CAR TIMELINE 072
CAR MISS DIANA 285



BW	WW 10/10	205 wt	NR	365 wt	YR	ADG	Scrotal
85	735	665	95	1113	95	2.80	37.9
CED	BW	WW	Milk	YW	SC		
+4	+1.5	+53	+14	+85	+0.62		
Marb	RE	Fat	\$M	\$W	\$F	\$G	\$B
+0.52	+0.47	+0.024	+46	+44	+71	+43	+114

This double bred Motive bull has excellent carcass values and a balanced set of numbers.

113

Bull

CAR MOTIVE 049

19916760

calved - 01/26/20

SOO LINE MOTIVE 9016#
CAR MOTIVE 423
CAR MISS HEATHER 446#

HF KODIAK 5R
TLA BEAUTY 5R
CAR DUKE 104#
CAR HEATHER 020#
C A R TRACKER 614
LADY NEW TREND 027 C A R
C A R 011 REAL RITO 2113
LADY 660 PRIMEMOVER 957 CAR



BW	WW 10/10	205 wt	NR	365 wt	YR	ADG	Scrotal
92	734	641	101	1142	101	3.13	34.8
CED	BW	WW	Milk	YW	SC		
+1	+3.1	+56	+23	+103	+0.48		
Marb	RE	Fat	\$M	\$W	\$F	\$G	\$B
+0.42	+0.24	+0.042	+51	+48	+80	+34	+114

Dam is a 10 year old Tracker daughter. Second and Third generation dams produced 14 & 15 calves in their lifetime production. Lots of cow power and proven bred in longevity in this top 423 Motive son.

115

Bull

CAR DURABULL 054

19946035

calved - 01/27/20

CAR 865 DUKE 3200
CAR DURABULL LINE 575
CAR MISS MARIE 3184#

CAR DUKE 865
CAR LADY DIANA 503
CAR CHINNOOK1119
CAR MISS MARIE 110
C A R TRACKER 614
LADY NEW TREND 027 C A R
HYLINE RIGHT TIME 338#
C A R MISS CAROLINE 705



BW	WW 10/10	205 wt	NR	365 wt	YR	ADG	Scrotal
85	722	653	93	1125	96	2.95	36.5
CED	BW	WW	Milk	YW	SC		
+3	+2.7	+47	+20	+82	+1.03		
Marb	RE	Fat	\$M	\$W	\$F	\$G	\$B
+0.39	+0.11	+0.060	+47	+38	+66	+30	+95

Dam is a very productive 12 year old Tracker daughter with bred in longevity. This Durabull son will leave you with an excellent set of heifer replacements.



YEARLING BULLS



116

Bull

CAR DURABULL 094

19946039

calved - 02/03/20

CAR 865 DUKE 3200
CAR DURABULL LINE 575
CAR MISS MARIE 3184#

CAR DUKE 865
CAR LADY DIANA 503
CAR CHINNOOK1119
CAR MISS MARIE 110
K C F BENNETT EFFICIENT
CAR MISS SUSIE 308#
CAR 461 TRACKER 6106
CAR MISS MARIE 387



BW	WW 10/10	205 wt	NR	365 wt	YR	ADG	Scrotal
75	752	664	96	1054	90	2.44	37.5
CED	BW	WW	Milk	YW	SC		
+8	-0.4	+45	+27	+72	+1.07		
Marb	RE	Fat	\$M	\$W	\$F	\$G	\$B
+1.3	+5.6	+0.049	+66	+57	+59	+24	+83

Dam is a model 10 year old angus cow with 101 weaning on her calves. Plenty of maternal strength behind this quality bred Durabull son with calving ease.

119

Bull

CAR EFFICIENT 0150

19916689

calved - 02/11/20

CAR BISMARCK 371
CAR BISMARCK 8190
CAR MISS MIKAYLA 530#

S A V BISMARCK 5682#
CAR MISS VIKING 9191
R B ACTIVE DUTY 010#
CAR MISS MIKAYLA 179#
CAR BUSHWACKER 601
CAR MISS BRENDA 422
LAR JUNEANU 796Y
CAR MISS MARIE 7180



BW	WW 10/10	205 wt	NR	365 wt	YR	ADG	Scrotal
75	675	676	107	1140	101	2.90	39.8
CED	BW	WW	Milk	YW	SC		
+4	+0.4	+49	+28	+79	+2.25		
Marb	RE	Fat	\$M	\$W	\$F	\$G	\$B
+4.2	+0.05	+0.057	+45	+58	+38	+30	+68

Out of a 1st calf heifer. Good set of balanced numbers on this calving ease prospect by Bismarck 8190.

117

Bull

CAR NEXT STEP 0185

19951904

calved - 02/20/20

PRAIRIE PRIDE NEXT STEP 2036#
CAR NEXT STEP 878
CAR MISS DIANA 127

SYDGEN 928 DESTINATION 5420#
FLYING V MISS PRIDE 426
CAR DUKE 865
CAR MISS DIANA 7104
CONNEALY CAPITALIST 028#
DIAMOND BLACK LADY 7206#
CAR BUSHWACKER 884
CAR IDEAL PRIME LADY 8142



BW	WW 10/10	205 wt	NR	365 wt	YR	ADG	Scrotal
65	654	669	106	1179	105	3.19	37.6
CED	BW	WW	Milk	YW	SC		
+7	+1.6	+49	+25	+88	+1.02		
Marb	RE	Fat	\$M	\$W	\$F	\$G	\$B
+2.0	+3.4	+0.21	+52	+48	+72	+27	+100

Out of 1st calf heifer. Outcross calving ease genetics tied up in this calving ease prospect by Next Step 878.

120

Bull

CAR CAPITALIST 0111

19951892

calved - 02/05/20

CONNEALY CAPITALIST 028#
DIAMOND CAPITALIST B011
DIAMOND BLACK LADY 7206#

S A V FINAL ANSWER 0035#
PRIDES PITA OF CONANGA 8821
DIAMOND PAYWEIGHT 738N
DIAMOND BLACK LADY M281
CAR TIMELINE 545
CAR MISS ROBERTA 6108#
CAR CHINNOOK 786#
CAR MISS HEATHER 420#



BW	WW 10/10	205 wt	NR	365 wt	YR	ADG	Scrotal
88	708	630	90	1038	88	2.55	38.1
CED	BW	WW	Milk	YW	SC		
+2	+1.9	+39	+24	+64	+1.15		
Marb	RE	Fat	\$M	\$W	\$F	\$G	\$B
+5.9	+0.1	+0.023	+64	+40	+38	+40	+78

This top Capitalist son is in the top 3% of the breed for tenderness and top 2% for heifer pregnancy rates according to the Genomic evaluation.

118

Bull

CAR IMPRESSION 0158

19966916

calved - 02/13/20

CONNEALY IMPRESSION#
BARTELS IMPRESSION C116
K C F MISS CONSENSUS Y300

CONNEALY REFLECTION#
PEARL PAMMY OF CONANGA 194
CONNEALY CONSENSUS#
K C F MISS 589 M359#
SITZ RAINMAKER 6169#
REDLAND ELBA 1849
CAR TRAVELER 106
LADY OSCAR 937 C A R#



BW	WW 10/10	205 wt	NR	365 wt	YR	ADG	Scrotal
76	744	672	106	1059	94	2.42	37.8
CED	BW	WW	Milk	YW	SC		
+8	+1.0	+47	+19	+75	+1.03		
Marb	RE	Fat	\$M	\$W	\$F	\$G	\$B
+1.25	+1.41	+0.006	+57	+43	+64	+32	+97

Tremendous proven bred in longevity in this cow family, with previous 3 generations of cows averaging 12 calves in their lifetime. Excellent balanced numbers on this calving ease prospect by Impression out of a top producing Redland Rainmaker dam.

121

Bull

CAR BISMARCK 0138

19951897

calved - 02/09/20

CAR BISMARCK 371
CAR BISMARCK 8190
CAR MISS MIKAYLA 530#

S A V BISMARCK 5682#
CAR MISS VIKING 9191
R B ACTIVE DUTY 010#
CAR MISS MIKAYLA 179#
CAR BUSHWACKER 601
CAR MISS BRENDA 422
CAR NEW DAY 7162
CAR MISS MARIE 130#



BW	WW 10/10	205 wt	NR	365 wt	YR	ADG	Scrotal
70	652	652	103	1108	98	2.85	36.7
CED	BW	WW	Milk	YW	SC		
+9	-1.3	+39	+35	+74	+1.16		
Marb	RE	Fat	\$M	\$W	\$F	\$G	\$B
+0.09	+0.09	+0.055	+64	+56	+71	+16	+87

Out of a 1st calf heifer. Excellent calving ease prospect by Bismarck 8190.



YEARLING BULLS



122

Bull

CAR DURABULL 013

19946020

calved - 01/22/20

CAR 865 DUKE 3200
CAR DURABULL LINE 575
CAR MISS MARIE 3184#

CAR DUKE 865
CAR LADY DIANA 503
CAR CHINNOOK1119
CAR MISS MARIE 110
K C F BENNETT EFFICIENT
CAR MISS SUSIE 308#
CAR RIDGERUNNER 001
C A R LADY TRACKER 607



BW	WW 10/10	205 wt	NR	365 wt	YR	ADG	Scrotal
70	700	604	95	1092	97	3.05	38.6
CED	BW	WW	Milk	YW	SC		
+13	-2.0	+31	+28	+53	+1.60		
Marb	RE	Fat	\$M	\$W	\$F	\$G	\$B
+38	+13	+0.41	+62	+43	+31	+31	+62

Dam is a Pathfinder cow. Excellent calving ease prospect by Durabull. Top 5% of breed for tenderness. Talk about adding value to the calves you sell.

125

Bull

CAR TRUE GRIT 0227

19954775

calved - 03/06/20

HILLTOP TRUE GRIT 9202#
HARRISON TRUE GRIT 4253
HARRISON MISS HILDA 9097

SITZ ALLIANCE 7544#
HILLTOP CANDY LASS 713
SITZ ONWARD 454S
CAR MISS HILDA 6102
CAR PRIMETRACKER 308#
C A R MISS RAINDANCER 421#
CAR DUKE 316
CAR MISS MARIE 266#



BW	WW 10/10	205 wt	NR	365 wt	YR	ADG	Scrotal
75	715	686	108				
CED	BW	WW	Milk	YW	SC		
+8	-0.6	+55	+21	+91	+1.88		
Marb	RE	Fat	\$M	\$W	\$F	\$G	\$B
+4.8	+33	+0.23	+47	+55	+56	+40	+96

Dam has 7@ 101W. Youngest bull in the sale. Calving ease prospect by True Grit with a balanced set of numbers.

123

Bull

CAR BISMARCK 0184

19951903

calved - 02/20/20

CAR BISMARCK 371
CAR BISMARCK 8190
CAR MISS MIKAYLA 530#

S A V BISMARCK 5682#
CAR MISS VIKING 9191
R B ACTIVE DUTY 010#
CAR MISS MIKAYLA 179#
HILLTOP TRUE GRIT 9202#
HARRISON MISS HILDA 9097
CAR DUKE 504
CAR MISS VIKING 5145



BW	WW 10/10	205 wt	NR	365 wt	YR	ADG	Scrotal
70	671	685	108	1149	102	2.90	38.1
CED	BW	WW	Milk	YW	SC		
+4	+2.2	+60	+23	+99	+1.49		
Marb	RE	Fat	\$M	\$W	\$F	\$G	\$B
+39	+25	+0.42	+50	+60	+67	+33	+100

Out of a 1st calf heifer. Top calving ease prospect by Bismark 8191 with a balanced set of figures.

126

Bull

CAR HOMESTRETCH 019

19916701

calved - 01/23/20

B BAR WINDY 79
B BAR HOMESTRETCH 3047
B BAR QUEEN 304#

CROOK MT REALLY WINDY 141#
B BAR LADY JEWEL 116#
SITZ RLS ALLIANCE 7164
B BAR QUEEN 557#
WMR TIMELESS 458#
GDAR BLACKCAP LADY 071
CAR INCREDIBULL 820
CAR MISS JULIE 7151



BW	WW 10/10	205 wt	NR	365 wt	YR	ADG	Scrotal
78	727	667	95	1024	87	2.23	36.7
CED	BW	WW	Milk	YW	SC		
+7	+0.8	+40	+32	+66	+0.38		
Marb	RE	Fat	\$M	\$W	\$F	\$G	\$B
+1.6	+32	+0.48	+76	+55	+39	+23	+62

Outcross calving ease genetics in this good Homestretch son.

124

Bull

CAR JUNEAU 0130

626083942

calved - 02/08/20

CAR 865 DUKE 3200
CAR MISS MIKAYLA 760
CAR MISS MIKAYLA 179#



BW	WW 10/10	205 wt	NR	365 wt	YR	ADG	Scrotal
60	723	712	100	1141	100	2.68	34.2
CED	BW	WW	Milk	YW	SC		
na	na	na	na	na	na		
Marb	RE	Fat	\$M	\$W	\$F	\$G	\$B
na	na	na	na	na	na	na	na

This light birth weight bull is selling as a commercial bull. His Genomics indicate he is in the top 2% of the breed for weaning weight and top 1% of the breed for yearling weight.

127

Bull

CAR IMPRESSION 0157

19954600

calved - 02/12/20

CONNEALY IMPRESSION#
BARTELS IMPRESSION C116
K C F MISS CONSENSUS Y300

CONNEALY REFLECTION#
PEARL PAMMY OF CONANGA 194
CONNEALY CONSENSUS#
K C F MISS 589 M359#
CAR 865 DUKE 3200
CAR MISS MARIE 3184#
CAR 504 DUKE 898
CAR MISS MIKAYLA 346



BW	WW 10/10	205 wt	NR	365 wt	YR	ADG	Scrotal
74	666	638	91	1052	90	2.59	37.3
CED	BW	WW	Milk	YW	SC		
0	+1.1	+49	+19	+81	+1.33		
Marb	RE	Fat	\$M	\$W	\$F	\$G	\$B
+3.5	+53	-0.005	+43	+46	+58	+39	+96

Dam has 2@ 106W. Granddam is a Pathfinder. Excellent maternal values behind this calving ease prospect by Impression.



YEARLING BULLS



128

Bull

CAR BISMARCK 0199

19951906

calved - 02/24/20

CAR BISMARCK 371
CAR BISMARCK 8190
CAR MISS MIKAYLA 530#

S A V BISMARCK 5682#
CAR MISS VIKING 9191
R B ACTIVE DUTY 010#
CAR MISS MIKAYLA 179#
BARSTOW CASH#
CAR MISS MIKAYLA 510#
CAR MOTIVE 423
CAR MISS JULIE 0125#

CAR CHA CHING 528
CAR MISS JULIE 8136
CAR MISS JULIE 633



BW	WW 10/10	205 wt	NR	365 wt	YR	ADG	Scrotal
65	664	685	108	1160	103	2.97	40.7
CED	BW	WW	Milk	YW	SC		
+9	+0.6	+52	+22	+87	+1.60		
Marb	RE	Fat	\$M	\$W	\$F	\$G	\$B
+0.37	-0.13	+0.055	+49	+52	+45	+26	+71

Out of a 1st calf heifer. Sleep all night calving ease prospect by Bismark 8191.

131

Bull

CAR REVOLUTION 0201

19951907

calved - 02/25/20

SVR REVOLUTION 4129
FOOS REVOLUTION 243
FOOS HAZEL 243

CANDOLIER FOREVER 376#
S C C ENCHANTRESS 3F1 X412
CROOK MT REALLY WINDY 8834
N F HAZEL 7461-8#
CAR INCREDIBULL 080
CAR MISS MARIE 7170
E 7 GURU 1375
CAR MISS WENDY 1110#

CAR INCREDIBULL 496
CAR MISS WENDY 668
CAR MISS WENDY 4121



BW	WW 10/10	205 wt	NR	365 wt	YR	ADG	Scrotal
77	699	667	105	1115	99	2.80	39.4
CED	BW	WW	Milk	YW	SC		
+4	+1.3	+43	+27	+71	+1.65		
Marb	RE	Fat	\$M	\$W	\$F	\$G	\$B
+0.23	+0.35	+0.061	+71	+51	+52	+25	+77

Dam has 3@ 101W. Excellent cow family behind this impressive young calving ease prospect by Revolution.

129

Bull

CAR MENTOR 059

19940698

calved - 01/28/20

G A R RETAIL PRODUCT#
CONNELY MENTOR 7374#
EXECUTA OF CONANGA 939#

G A R PRECISION 1680#
G A R EXT 4927
JAUER 353 TRAVELER 589 27#
EXEC OF CONANGA 6940#
CAR DUKE 316
C A R MARIE 818
MC BEE WMR SUPER X 745#
C A R MISS CAROLINE 714

CAR DUKE 504
CAR MISS CAROLINE 706#
CAR MISS CAROLINE 254



BW	WW 10/10	205 wt	NR	365 wt	YR	ADG	Scrotal
77	662	601	95	1183	105	3.64	36.7
CED	BW	WW	Milk	YW	SC		
+9	+1.5	+50	+34	+101	+1.08		
Marb	RE	Fat	\$M	\$W	\$F	\$G	\$B
+0.38	+0.68	+0.024	+63	+59	+88	+40	+127

Dam is a 14 year old Pathfinder with 104 average weaning on her progeny. Tremendous maternal and carcass values on this high gaining Mentor son. Calving ease prospect.

132

Bull

CAR BUSHWACKER 076

19916815

calved - 01/31/20

CAR BUSHWACKER 601
CAR BUSHWACKER 618
CAR MISS BRENDA 422

B C C BUSHWACKER 41-93#
C A R MISS RAINDANCER 421#
CAR TANK 226
CAR MISS BRENDA 062
LAR JUNEANU 796Y
CAR MISS DIANA 0101#
CAR TRACKER 904#
CAR MISS CAROLINE 436

CAR JUNEANU 3236
CAR MISS CAROLINE 7132
CAR MISS CAROLINE 953



BW	WW 10/10	205 wt	NR	365 wt	YR	ADG	Scrotal
70	656	614	97	1083	96	2.93	37.9
CED	BW	WW	Milk	YW	SC		
-3	+2.3	+48	+21	+82	+0.76		
Marb	RE	Fat	\$M	\$W	\$F	\$G	\$B
+0.17	+0.33	+0.032	+66	+46	+72	+25	+96

Calving ease prospect by 618 Bushwacker out of a really productive cow family.

130

Bull

CAR TRUE GRIT 0200

19954773

calved - 02/24/20

HARRISON TRUE GRIT 4253
CAR TRUE GRIT 8141
CAR MISS MARIE 582

HILLTOP TRUE GRIT 9202#
HARRISON MISS HILDA 9097
CAR JUNEANU 3236
CAR MISS MARIA 358#
SOO LINE MOTIVE 9016#
CAR MISS HEATHER 446#
CAR TRACKER 904#
CAR MISS DIANA 157

CAR MOTIVE 423
CAR MISS DIANA 8103
CAR MISS DIANA 6110



BW	WW 10/10	205 wt	NR	365 wt	YR	ADG	Scrotal
73	696	715	113	1155	102	2.75	37.2
CED	BW	WW	Milk	YW	SC		
0	+4.0	+64	+27	+99	+1.28		
Marb	RE	Fat	\$M	\$W	\$F	\$G	\$B
+0.54	+0.46	-0.015	+51	+63	+67	+47	+114

Out of a 1st calf heifer. This top True Grit 8191 son has a good weaning ration and very complete set of balanced numbers.

133

Bull

CAR NEXT STEP 0217

19951911

calved - 02/28/20

PRAIRIE PRIDE NEXT STEP 2036#
CAR NEXT STEP 878
CAR MISS DIANA 127

SYDGEN 928 DESTINATION 5420#
FLYING V MISS PRIDE 426
CAR DUKE 865
CAR MISS DIANA 7104
HA OUTSIDE 3008
HA BLACKCAP LADY 1602#
HBR ENCORE 0544
CAR MISS MIKAYLA 510#

HA COWBOY UP 5405
CAR MISS MIKAYLA 828
CAR MISS MIKAYLA 294



BW	WW 10/10	205 wt	NR	365 wt	YR	ADG	Scrotal
77	639	668	105	1164	103	3.10	33.8
CED	BW	WW	Milk	YW	SC		
+4	+2.6	+62	+16	+102	-0.06		
Marb	RE	Fat	\$M	\$W	\$F	\$G	\$B
-0.23	+0.48	-0.028	+51	+52	+60	+13	+73

Out of a 1st calf heifer. Calving ease prospect by Next Step, out of Cowboy Up daughter.



YEARLING BULLS



134

Bull

CAR REVOLUTION 096

19954779

calved - 02/03/20

SVR REVOLUTION 4129
FOOS REVOLUTION 243
FOOS HAZEL 243

CANDOLIER FOREVER 376#
S C C ENCHANTRESS 3F1 X412
CROOK MT REALLY WINDY 8834
N F HAZEL 7461-8#

K C F BENNETT STEWARD
CAR MISS MARIE 862#
CAR DUKE 104#
C A R MISS 019 RITO 651#

CAR STEWARD 076
CAR MISS DIANA 3109
CAR MISS DIANA 579



BW	WW 10/10	205 wt	NR	365 wt	YR	ADG	Scrotal
70	657	581	83	1003	85	2.64	38.0
CED	BW	WW	Milk	YW	SC		
+16	-2.4	+13	+28	+36	+0.91		
Marb	RE	Fat	\$M	\$W	\$F	\$G	\$B
+14	+0.09	+0.042	+38	+23	+40	+19	+59

Excellent calving ease merit on this Revolution son.

135

Bull

CAR CONSENSUS 0104

19916621

calved - 02/04/20

CONNEALY CONSENSUS#
BARTELS CONSENSUS 3809 649
ELISHA OF CONANGA 868 988

KMK ALLIANCE 6595 187#
BLINDA OF CONANGA 004
G A R GRID MAKER#
ELIGENCE PLUS OF CONANGA

CAR EXT 909
CAR MISS JODY 4222
CAR MISS JODY 9184

N BAR EMULATION EXT#
LADY TRAVELER 449 C A R#
CAR HERO 560
CAR MISS JODY 4122



BW	WW 10/10	205 wt	NR	365 wt	YR	ADG	Scrotal
79	720	638	91	904	77	1.66	36.5
CED	BW	WW	Milk	YW	SC		
+9	-0.7	+44	+28	+67	+0.21		
Marb	RE	Fat	\$M	\$W	\$F	\$G	\$B
+49	+43	-0.015	+67	+62	+39	+44	+84

Calving ease prospect with appealing carcass values





REGISTERED HEIFERS



140

Cow

CAR MISS MARIE 0157

19940595 calved - 02/08/20

QUAKER HILL RAMPAGE 0A36#
CONNELLY LEGENDARY 644L
JAZZED OF CONANGA 4660

MCC DAYBREAK#
QHF BLACKCAP 6E2 OF4V16 4355
MORGANS DIRECTION 111 9901#
JAZE OF CONANGA 234

CAR CHA CHING 528
CAR MISS MARIE 882
CAR MISS MARIE 609#

BARSTOW CASH#
CAR MISS MIKAYLA 510#
CAR MOTIVE 423
CAR MISS MARIE 1167



BW	NR	YR	Sale Wt				
64	112						
BW EPD	WW EPD	Milk EPD	YW EPD				
-1.3	+63	+26	+99				
Marb	RE	Fat	\$M	\$W	\$F	\$G	\$B
+1.18	+0.73	+0.011	+70	+77	+69	+78	+147

Out of a 1st calf heifer. Granddam is a Pathfinder. Outstanding Legendary daughter from our best producing cow family, the Marie's. Top 5% of the breed for marbling and top 3% for \$G.



141

Cow

CAR MISS CAROLINE 0160

19922662 calved - 02/09/20

LD CAPITALIST 316
PINE COULEE CAPITALIST F339
PINE COULEE BLACKCAP Y1#

CONNELLY CAPITALIST 028#
LD DIXIE ERICA 2053
PINE COULEE POWERHOUSE W112
PINE COULEE BLACKCAP G 3Z71#

BARTELS CONSENSUS 3809 649
CAR MISS CAROLINE 889
CAR MISS CAROLINE 6163#

CONNELLY CONSENSUS#
ELISHA OF CONANGA 868 988
CAR TEN X 107
CAR MISS CAROLINE 953



BW	NR	YR	Sale Wt				
60	117						
BW EPD	WW EPD	Milk EPD	YW EPD				
-1.1	+64	+26	+113				
Marb	RE	Fat	\$M	\$W	\$F	\$G	\$B
+0.38	+0.82	-0.002	+56	+71	+93	+44	+137

Out of a 1st calf heifer. Granddam is a Pathfinder. Very appealing number profile with great carcass values on this top Capitalist daughter with great potential.



142

Cow

CAR MISS DIANA 085

19922705 calved - 01/28/20

CONNELLY CONSENSUS#
BARTELS CONSENSUS 3809 649
ELISHA OF CONANGA 868 988

KMK ALLIANCE 6595 187#
BLINDA OF CONANGA 004
G A R GRID MAKER#
ELIGENCE PLUS OF CONANGA

HARRISON TRUE GRIT 4253
CAR MISS DIANA 695
CAR MISS DIANA 497

HILLTOP TRUE GRIT 9202#
HARRISON MISS HILDA 9097
CAR INCREDIBULL 080
CAR MISS DIANA 6149#



BW	NR	YR	Sale Wt				
77	105						
BW EPD	WW EPD	Milk EPD	YW EPD				
+0.2	+65	+12	+100				
Marb	RE	Fat	\$M	\$W	\$F	\$G	\$B
+0.16	+0.43	+0.014	+57	+60	+59	+27	+86

Excellent EPD profile on this top Consensus daughter from a very productive cow family.





REGISTERED HEIFERS



143

Cow

CAR MISS MIKAYLA 035

19922674

calved - 01/20/20

BARSTOW CASH#
CAR CHA CHING 528
CAR MISS MIKAYLA 510#

SITZ DASH 10277#
BARSTOW QUEEN W16
CAR PRIMETRACKER 308#
CAR MISS MIKAYLA 209
CAR EFFICIENT 7132
CAR MISS JODY 119
MRA 2105 OF EMBLAZON 2021
CAR MISS MIKAYLA 510#

CAR EFFICIENT 904
CAR MISS MIKAYLA 158#
CAR MISS MIKAYLA 8140



BW		NR		YR		Sale Wt	
72		100					
BW EPD		WW EPD		Milk EPD		YW EPD	
+1.0		+52		+26		+89	
Marb	RE	Fat	\$M	\$W	\$F	\$G	\$B
+23	+83	+0.06	+80	+59	+77	+36	+113

10 yr old Pathfinder dam. Notice great granddam is a 16 yr old Pathfinder dam of our herd sire CAR Cha Ching 528. Very intriguing heifer, being double bred to one of the very best cows on the ranch, the 510 cow.



144

Cow

CAR MISS ROBERTA 0113

19922648

calved - 02/01/20

K C F BENNETT EFFICIENT
CAR EFFICIENT 534#
CAR MISS SUSIE 308#

CONNELLY FOREFRONT#
K C F BL MISS 5522 E152
CAR DUKE 104#
C A R MISS TRENDY 449
KOU PAL JUNE AU 797#
QUEEN ELBA 763U LAR
CAR CEDAR RIDGE 156
CAR MISS ROBERTA 169

LAR JUNE ANU 796Y
CAR MISS ROBERTA 8138
CAR MISS ROBERTA 3114



BW		NR		YR		Sale Wt	
66		107					
BW EPD		WW EPD		Milk EPD		YW EPD	
+1.1		+65		+28		+111	
Marb	RE	Fat	\$M	\$W	\$F	\$G	\$B
+29	+28	+0.37	+54	+73	+76	+29	+105

Out of a 1st calf heifer. Look at the appealing number package on this nice looking Efficient daughter. The Efficient daughters continue to have the high selling bulls in sales across the country.

146

Cow

CAR MISS PATTY 041

19922679

calved - 01/21/20

CAR REMARKABLE 640
CAR REMARKABLE 821
CAR MISS HEATHER 5167#

S A V RESOURCE 1441#
CAR MISS MARIE 769#
CAR CEDAR RIDGE 156
CAR MISS HEATHER 2197
CAR DUKE 504
CAR MISS MARIE 300
CAR DUKE 104#
CAR PATRICIA 937

CAR DUKE 865
CAR MISS PATTY 2149
CAR MISS PATTY 638



BW		NR		YR		Sale Wt	
88		117					
BW EPD		WW EPD		Milk EPD		YW EPD	
+3.8		+73		+20		+126	
Marb	RE	Fat	\$M	\$W	\$F	\$G	\$B
+13	+50	+0.13	+38	+60	+91	+27	+118

Four generations of cows averaging 12 calves each in their lifetime. This fancy productive looking phenotypical attractive Remarkable daughter will catch your eye.

145

Cow

CAR MISS MARIE 0131

19922655

calved - 02/03/20

KOU PAL JUNE AU 797#
LAR JUNE ANU 796Y
QUEEN ELBA 763U LAR

O C C JUNE AU 807J#
KOU PALS ELBA 187
LAR ALLIANCE 64L#
QUEEN ELBA 525R LAR
CAR CHINNOOK 786#
CAR MARIE 9139
CAR DUKE 865
CAR MISS MARIE 645

CAR CHINNOOK 1119
CAR MISS MARIE 3184#
CAR MISS MARIE 110



BW		NR		YR		Sale Wt	
75		103					
BW EPD		WW EPD		Milk EPD		YW EPD	
+1.9		+62		+21		+113	
Marb	RE	Fat	\$M	\$W	\$F	\$G	\$B
+15	+34	-0.08	+62	+55	+78	+27	+105

Dam is an 8 yr old Pathfinder and dam of our herd sire CAR Durabull Line 575. This heifer has the credentials to be a top producer in anyone's herd. The Juneau daughters are amazing.





REGISTERED HEIFERS



147

Cow

CAR MISS ROBERTA 0105

19942369

calved - 01/30/20

BASIN PAYWEIGHT 1682#
JACS RARE FIND 6503
CRAZY K BLACKCAP 4297

BASIN PAYWEIGHT 006S#
21AR O LASS 7017
A A R TEN X 7008 S A#
FOX RUN BLACKCAP 7141
COLE CREEK CEDAR RIDGE 1V#
CAR MISS LUCY 720
CAR DUKE 865
CAR MISS ROBERTA 068

CAR CEDAR RIDGE 156
CAR MISS ROBERTA 3114
CAR MISS ROBERTA 169



BW	NR	YR	Sale Wt				
70	109						
BW EPD	WW EPD	Milk EPD	YW EPD				
+2.4	+74	+27	+113				
Marb	RE	Fat	\$M	\$W	\$F	\$G	\$B
+0.60	+0.01	+0.035	+66	+81	+75	+40	+115

Dam has 5@ 100W. Lots of Flesching ability and udder quality in this long term producing cow family. This Rare Find daughter reads well on paper and better yet in person.



lot 147

148

Cow

CAR MISS ROBERTA 037

19922676

calved - 01/20/20

CAR BUSHWACKER 601
CAR BUSHWACKER 618
CAR MISS BRENDA 422

B C C BUSHWACKER 41-93#
C A R MISS RAINDANCER 421#
CAR TANK 226
CAR MISS BRENDA 062
H A R B WINDY 702 JH#
EILEENMERE DIAMOND 161 L A R
C A R SUPREME 749#
C A R ROBERTA 837

LAR WINDY 64 423S#
CAR MISS ROBERTA 115#
CAR ROBERTA 014



BW	NR	YR	Sale Wt				
75	111						
BW EPD	WW EPD	Milk EPD	YW EPD				
+3.1	+66	+26	+113				
Marb	RE	Fat	\$M	\$W	\$F	\$G	\$B
+0.38	+0.48	+0.036	+38	+62	+85	+36	+121

Dam is a 10 yr old Pathfinder, with 8@ 107W. Lots of proven long term bred in longevity bred in this top end 618 Bushwacker daughter.



lot 148

149

Cow

CAR MISS MARIE 074

19922699

calved - 01/26/20

CONNEALY IMPRESSION#
BARTELS IMPRESSION C116
K C F MISS CONSENSUS Y300

CONNEALY REFLECTION#
PEARL PAMMY OF CONANGA 194
CONNEALY CONSENSUS#
K C F MISS 589 M359#
K C F BENNETT EFFICIENT
CAR MISS SUSIE 308#
CAR TIMELESS 272
CAR MISS MARIE 048

CAR EFFICIENT 534#
CAR MISS MARIE 693
CAR MISS MARIE 4240



BW	NR	YR	Sale Wt				
70	103						
BW EPD	WW EPD	Milk EPD	YW EPD				
+1.3	+62	+25	+114				
Marb	RE	Fat	\$M	\$W	\$F	\$G	\$B
+0.20	+0.27	+0.004	+58	+66	+100	+27	+128

Dam is a very productive Efficient daughter that traces multiple times to our 449 cow. The Impression daughters we have calved are making great young cows.



lot 149



REGISTERED HEIFERS



150

Cow

CAR MISS MARIE 046

19960121 calved - 01/22/20

CAR 865 DUKE 3200
CAR DURABULL LINE 575
CAR MISS MARIE 3184#

CAR DUKE 865
CAR LADY DIANA 503
CAR CHINNOOK1119
CAR MISS MARIE 110
COLE CREEK CEDAR RIDGE 1V#
CAR MISS LUCY 720
CAR CHINNOOK 786#
CAR MARIE 239

CAR CEDAR RIDGE 156
CAR MISS MARIE 676
CAR MARIE 426



BW	NR	YR	Sale Wt				
74	104						
BW EPD	WW EPD	Milk EPD	YW EPD				
+3.0	+67	+25	+114				
Marb	RE	Fat	\$M	\$W	\$F	\$G	\$B
+0.36	+0.40	+0.054	+66	+65	+92	+33	+124

Dam has 3@ 102W. The Durabull daughters have been outstanding females in our program. This fancy Durabull daughter is intensely linebred to the great foundation 449 cow.

153

Cow

CAR MISS JULIE 0149

19960077 calved - 02/06/20

LD CAPITALIST 316
PINE COULEE CAPITALIST F339
PINE COULEE BLACKCAP Y1#

CONNEALY CAPITALIST 028#
LD DIXIE ERICA 2053
PINE COULEE POWERHOUSE W112
PINE COULEE BLACKCAP G 3Z71#
CONNEALY IMPRESSION#
K C F MISS CONSENSUS Y300
CAR INCREDIBULL 820
CAR MISS JULIE 7151

BARTELS IMPRESSION C116
CAR MISS JULIE 8186
CAR MISS JULIE 2111



BW	NR	YR	Sale Wt				
74	114						
BW EPD	WW EPD	Milk EPD	YW EPD				
+4.6	+76	+20	+128				
Marb	RE	Fat	\$M	\$W	\$F	\$G	\$B
+0.63	+0.50	+0.010	+54	+65	+113	+50	+162

Out of a 1st calf heifer. The Capitalist daughters are making great cows in a lot of programs. Excellent numbers and carcass on this top heifer.

151

Cow

CAR MISS KAREN 069

19940718 calved - 01/26/20

QUAKER HILL RAMPAGE 0A36#
CONNEALY LEGENDARY 644L
JAZZED OF CONANGA 4660

MCC DAYBREAK#
QHF BLACKCAP 6E2 OF4V16 4355
MORGANS DIRECTION 111 9901#
JAZE OF CONANGA 234
CONNEALY CONSENSUS#
ELISHA OF CONANGA 868 988
CAR EFFICIENT 904
CAR MISS KAREN 4129

BARTELS CONSENSUS 3809 649
CAR MISS KAREN 879
CAR MISS KAREN 284



BW	NR	YR	Sale Wt				
57	103						
BW EPD	WW EPD	Milk EPD	YW EPD				
-0.8	+58	+18	+99				
Marb	RE	Fat	\$M	\$W	\$F	\$G	\$B
+1.17	+0.51	+0.008	+52	+57	+67	+75	+142

Out of a 1st calf heifer. Excellent Legendary daughter with top set of figures. Top 5% of the breed for marbling.

154

Cow

CAR IDEAL PRIME LADY 0153

19922660 calved - 02/07/20

S A V RESOURCE 1441#
CAR REMARKABLE 640
CAR MISS MARIE 769#

RITO 707 OF IDEAL 3407 7075
S A V BLACKCAP MAY 4136
CAR EFFICIENT 534#
CAR MISS MARIE 5164
B BAR BUSHWACKER 204
CAR WENDY 053#
CAR TRAVELER 373
C A R IDEAL PRIME LADY 515#

CAR BUSHWACKER 884
CAR IDEAL PRIME LADY 2141
CAR IDEAL PRIME LADY 8142



BW	NR	YR	Sale Wt				
78	98						
BW EPD	WW EPD	Milk EPD	YW EPD				
+3.4	+56	+20	+104				
Marb	RE	Fat	\$M	\$W	\$F	\$G	\$B
+0.48	+0.46	+0.013	+58	+44	+64	+42	+106

Dam has 6@ 101W. Herd bull producing cow family behind this top end 640 Remarkable daughter.

152

Cow

CAR MISS MARIE 093

19922708 calved - 01/29/20

A A R REALLY WINDY 1205#
CAR CHINNOOK 786#
CAR MISS MARIE 5109

A A R WINDY RIDGE 362
A A R LADY KELTON 2170
CAR TRACKER 904#
CAR MARIE 0108
S A V RESOURCE 1441#
CAR MISS MARIE 769#
CAR TRACKER 201
C A R MISS MARIE 716

CAR REMARKABLE 640
CAR MISS MARIE 841
CAR MISS MARIE 642#



BW	NR	YR	Sale Wt				
60	108						
BW EPD	WW EPD	Milk EPD	YW EPD				
1+0.7	1+42	1+25	1+74				
Marb	RE	Fat	\$M	\$W	\$F	\$G	\$B
1+.58	1+.28	1+.022	+47	+41	+65	+44	+108

Out of a 1st calf heifer. Granddam is a Pathfinder. The Chinook daughters are a sure thing. This fancy looking daughter will be a good one.



Connolly Angus Ranch

**Genetics for the Long Run
Production Sale**



Thanks for coming to the sale!





Connelly Angus
1950 Dean Road
Valier, MT 59486

Presorted
FIRST CLASS
US Postage
Paid
Ballyhoo Printing
59457



Connelly Angus Ranch

Tuesday, February 23, 2021



Don Connelly
406/ 279-3569 | 406/899/3826

www.connellyangus.com